

200-901 Dumps

Developing Applications and Automating Workflows using Cisco Core Platforms (DEVASC)

<https://www.certleader.com/200-901-dumps.html>



NEW QUESTION 1

In python, which expression checks whether the script returns a success status code when the Requests library is used?

- A. response.status_code== requests.ok
- B. respons.status_code== requests.codes.ok
- C. response.code== requests.codes.ok
- D. response.status_code ! == requests.codes.ok

Answer: B

NEW QUESTION 2

Which REST architectural constraint indicates that no client context should be stored on the server between requests?

- A. stateless
- B. uniform interface
- C. cacheable
- D. client-server

Answer: A

NEW QUESTION 3

Refer to the exhibit.

```
curl -X GET [redacted] -H "Accept: application/json" \
-H "Authorization: Bearer AbCdEf123456" https://localhost/api/myresource
```

A process on the host wants to access the service running inside this Docker container. Which port is used to make a connection?

- A. only outbound connections between 3000 and 5000 are possible
- B. port 3000
- C. any port between 3000 and 5000
- D. port 5000

Answer: B

NEW QUESTION 4

Drag and drop the network automation interfaces from the left onto the transport protocols that they support on the right. (Not all Options are used)

400	Unauthorized
401	Not Found
403	Bad Request
404	Forbidden

- A. Mastered
- B. Not Mastered

Answer: A

Explanation:

Grpc == http/2 , netconfig == ssh , restconfig == https

NEW QUESTION 5

Refer to the exhibit.

DELETE	Create
GET	Read
PATCH	Update
POST	Update
PUT	Delete

A REST API return this JSON output for a GET HTTP request, Which has assigned to a variable called “vegetables” Using python, which output is the result of this command?

DELETE	POST
GET	GET
PATCH	PATCH
POST	PUT
PUT	DELETE

- A. Lettuce
- B. Kiwi
- C. ['kiwi', 'grape']
- D. {'color': 'green', 'items': ['kiwi', 'grape']}

Answer: B

NEW QUESTION 6

Which two use cases are supported by Meraki APIs? (Choose two.)

- A. Retrieve live streams from a Meraki Camera.
- B. Build a custom Captive Portal for Mobile Apps.
- C. Configure network devices via the Dashboard API.
- D. Build location-aware apps from Wi-Fi and LoRaWAN devices.
- E. Deploy applications onto the devices.

Answer: BC

NEW QUESTION 7

Fill in the blanks to complete the python script to request a service ticket using the APIC-EM rest API for the user “devnetuser”.

The focus is on advanced planning and outcome prediction.	Agile
Users receive functional software and can provide feedback after the product is available.	
The timeline is followed and feedback is gathered before product completion.	
Developers respond to requirement changes throughout the development process.	Waterfall

- A. Mastered
B. Not Mastered

Answer: A

Explanation:

Solution as below

The focus is on advanced planning and outcome prediction.	Agile
Users receive functional software and can provide feedback after the product is available.	
The timeline is followed and feedback is gathered before product completion.	
Developers respond to requirement changes throughout the development process.	Waterfall

NEW QUESTION 8

When a Cisco IOS XE networking device is configured using RESTCONF, what is the default data-encoding method?

- A. XML
B. x-form-encoding
C. YANG
D. YAML

Answer: A

NEW QUESTION 9

Refer to the exhibit.

```
{
  "items": [{
    "kind": "object$NetworkObj",
    "selfLink": "https://10.201.230.5/api/objects/networkobjects/db01",
    "name": "db01",
    "host": {
      "kind": "IPv4address",
      "value": "172.16.0.11"
    },
    "objectId": "db01"
  }]
}
```

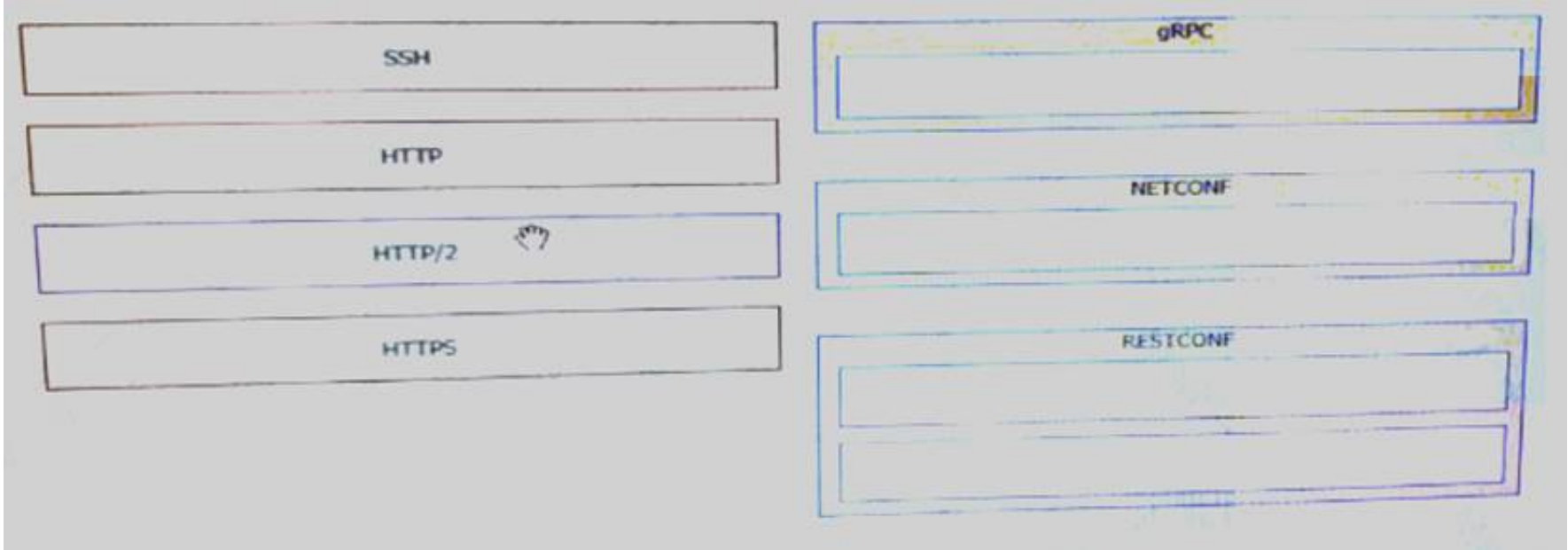
What is the action of the Bash script that is shown?

- A. The script waits until input is entered
B. If the directory exists, the script goes into it until there is no directory with the same name, then it creates a new directory.
C. The script goes into the directory called "\$ndir" and makes a new directory called "\$ndir"
D. The script waits until input is entered, then it goes into the directory entered and creates a new directory with the same name.
E. For all directories in the current folder
F. The script goes into directory and makes a new directory.

Answer: A

NEW QUESTION 10

Drag and drop the network automation interfaces from the left onto the transport protocols that they support on the right.



- A. Mastered
- B. Not Mastered

Answer: A

Explanation:

gRPC = C, NETCONF = A, RESTCONF = B, D

NEW QUESTION 10

Refer to the exhibit.



What caused the error in this API request?

- A. The API resource does not support the POST operation
- B. The API resource does not support JSON format payloads.
- C. The submitted JSON payload includes a field that is not supported by the API resource.
- D. The submitted JSON payload has a formatting issue

Answer: D

NEW QUESTION 14

Which two NETCONF operations cover the RESTCONF GET operation? (Choose two.)

- A. <get>
- B. <edit>

- C. <get-update>
- D. <modify-config>
- E. <get-config>

Answer: AE

NEW QUESTION 19

Refer to the exhibit.

FROM ubuntu:12.04	informs Docker that the container listens on the specified network port(s) at runtime
VOLUME ["/var/www", "/var/log/apache2", "/etc/apache2"]	creates a mount point with the specified name
RUN apt-get update && apt-get install -y --force-yes apache2	configures a container that runs as an executable
ENTRYPOINT ["/usr/sbin/apache2ctl", "-D", "FOREGROUND"]	must be the first instruction in the Docker file
EXPOSE 1521	

Fill in the blank to complete the query parameter and value so that the result set is returned in reverse chronological order (most recent first) based on when message were entered.

FROM ubuntu:12.04	EXPOSE 1521
VOLUME ["/var/www", "/var/log/apache2", "/etc/apache2"]	VOLUME ["/var/www", "/var/log/apache2", "/etc/apach
RUN apt-get update && apt get install -y --force-yes apache	ENTRYPOINT ["/usr/sbin/apache2ctl", "-D", "FOREGROU
ENTRYPOINT ["/usr/sbin/apache2ctl", "-D", "FOREGROUND"]	FROM ubuntu:12.04
EXPOSE 1521	

- A. Mastered
- B. Not Mastered

Answer: A

Explanation:

?sortBy=lastactivity

```
<books>
  <science>
    <biology>10.00</biology>
    <geology>9.00</geology>
    <chemistry>8.00</chemistry>
  </science>
  <math>
    <calculus>20.00</calculus>
    <algebra>12.00</algebra>
  </math>
</books>
```

NEW QUESTION 24

Which type of HTTP method is used by the Meraki nad webex teams APIs to send webhook notifications?

- A. HTTP GET
- B. HTTP PUT
- C. HTTP HEAD
- D. HTTP POST

Answer: D

NEW QUESTION 29

A function my_func() returns True when it executes normally. Which python snippet tests my_func()?

For CLI commands that support XML, the clid() method returns JSON output. An exception is thrown when XML is not used. Executes CLI commands. Takes CLI command string and returns show command output in a JSON form.

“

Note: The “clid” API can be useful when searching the output of show commands using JSON tools as shown in the example.

PYTHON

```
Example:
>>> import json
>>> from cli import *
>>> jversion = json.loads(clid("show
version"))
>>> jversion[bios_ver_str']
'08.06'
```

Arguments:

- cmd: Single CLI command or a batch of CLI commands. Delimiter for multiple CLI commands is a space followed by a semicolon. Configuration commands must be in a fully qualified form.

Returns:

- string: JSON-formatted output of show commands.

- A. Option A
- B. Option B
- C. Option C
- D. Option D

Answer: B

NEW QUESTION 31

An automation script fails to connect to an internal server exactly 1 out of 2 times it is executed. This behavior is seen from different clients. Which networking device must be at fault?

- A. Laptop on which the script is running
- B. Router
- C. Switch
- D. Load balancer

Answer: D

NEW QUESTION 35

Which status code is used by a REST API to indicate that the submitted payload is incorrect?

- A. 400
- B. 403
- C. 405
- D. 429

Answer: A

NEW QUESTION 40

What is an example of a network interface hardware address?

- A. domain name
- B. IP address
- C. workstation name
- D. MAC address

Answer: D

NEW QUESTION 45

A developer is reviewing a code that was written by a colleague. It runs fine, but there are many lines of code to do a seemingly simple task repeatedly. Which action organizes the code?

- A. Refactor the code by removing any unnecessary tests
- B. Using functions, rewrite any pieces of code that are repeated
- C. Reverse engineer and rewrite the code logic
- D. Modify the code to use loops

Answer: B

NEW QUESTION 49

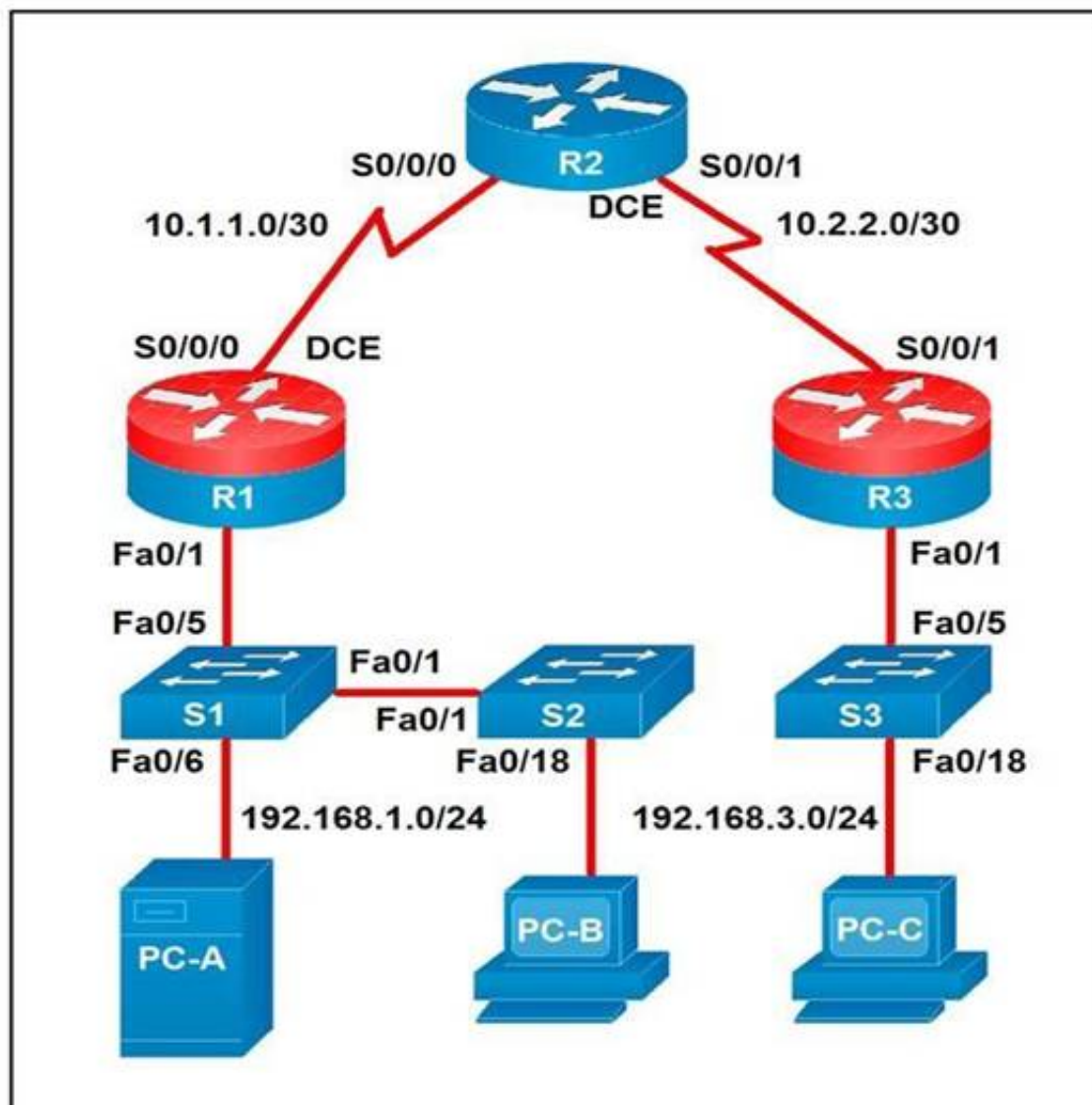
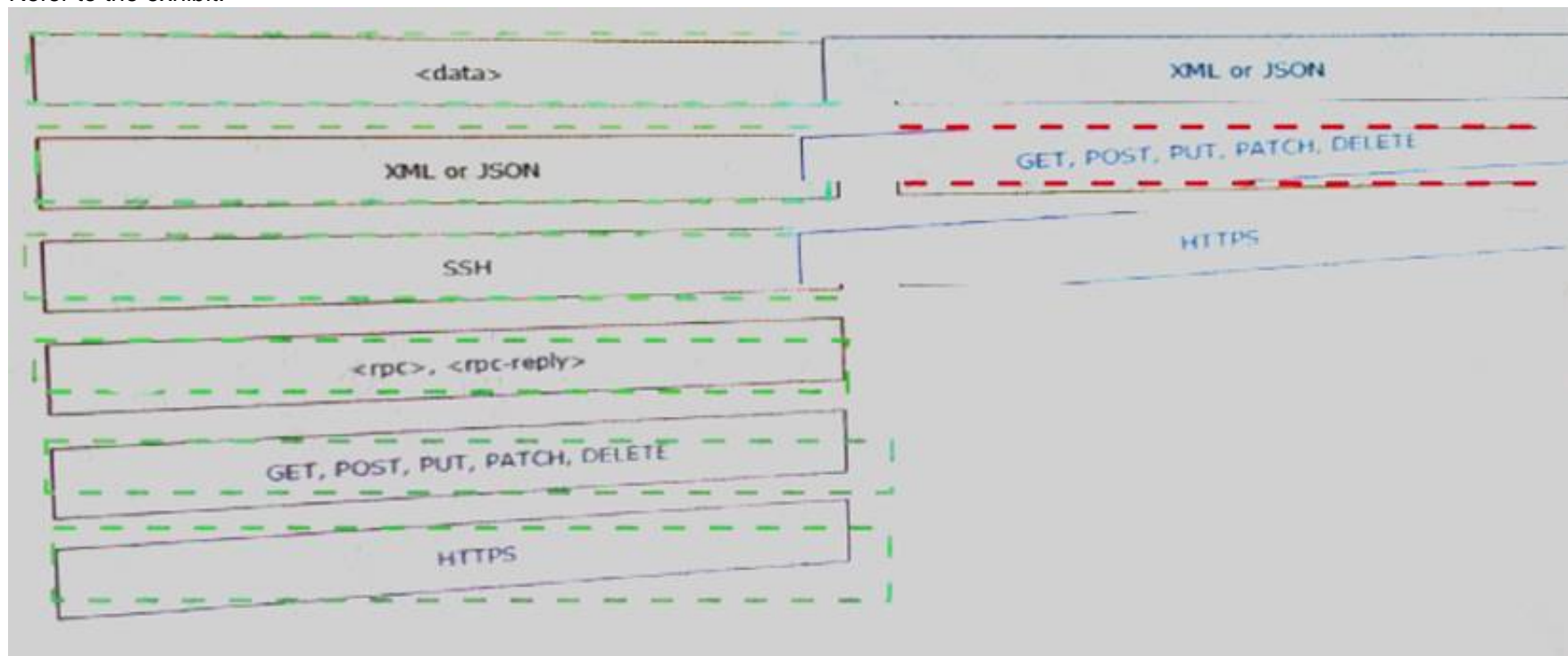
What are two characteristics of Bare Metal environments that are related to application deployment? (Choose two.)

- A. Provide the hypervisor to host virtual servers
- B. Specifically designed for container-based workloads.
- C. Provides workloads with access to hardware features
- D. Suitable for legacy application that do not support virtualization
- E. Not compatible with other cloud services such as PaaS or SaaS offerings.

Answer: CD

NEW QUESTION 51

Refer to the exhibit.



A developer is troubleshooting an API with the given API with the given API documentation and cURL command. What is the cause of this problem?

- A. The user is not allowed to post messages from their account
- B. The request body is missing or incomplete
- C. The API token specified is expired
- D. The authorization header is missing or incomplete

Answer: C

NEW QUESTION 53

Which two statements describe the advantages of using a version control system? (Choose two.)

- A. It allows for branching and merging so that different tasks are worked on in isolation before they are merged into a feature or master branch.

- B. It allows multiple engineers to work against the same code and configuration files and manage differences and conflicts.
- C. It provides tooling to automate application builds and infrastructure provisioning.
- D. It allows developers to write effective unit tests.
- E. It provides a system to track User Stories and allocate to backlogs.

Answer: AB

NEW QUESTION 57

Refer to the exhibit.

blocks networks traffic by default

uses traffic inspection to make
routing decisions

ports are different broadcast
domain by default

ports can be in the same
broadcast domain

Given the API documentation for the UCS SDK python class, UcsHandle, which code snippet creates a handle instance?

```
---
- hosts: switch2960cx
  gather_facts: no

  tasks:
    - ios_l2_interface:
      name: GigabitEthernet0/1
      state: unconfigured

    - ios_l2_interface:
      name: GigabitEthernet0/1
      mode: trunk
      native_vlan: 1
      trunk_allowed_vlans: 6-8
      state: present

    - ios_vlan:
      vlan_id: 6
      name: guest-vlan
      interfaces:
        - GigabitEthernet0/2
        - GigabitEthernet0/3

    - ios_vlan:
      vlan_id: 7
      name: corporate-vlan
      interfaces:
        - GigabitEthernet0/4

    - ios_vlan:
      vlan_id: 8
      name: iot-vlan
      interfaces:
        - GigabitEthernet0/5
```

- A. Option A
- B. Option B
- C. Option C
- D. Option D

Answer: B

NEW QUESTION 59

Which task is performed because the test-driven development approach is being used?

- A. testing existing software before developing new code
- B. refactoring code that is covered by existing tests
- C. writing code without committing any coding violations
- D. creating test scenarios based on continuous development

Answer: B

NEW QUESTION 63

In DNS, which record specifies an alias that refers to another name that ultimately resolves to an IP address?

- A. AAA
- B. SOA
- C. NS
- D. CNAME

Answer: D

NEW QUESTION 66

Drag and drop the element of the Finesse API on the left onto the description of its functionality on the right.

```
module ex-ethernet {
  namespace "http://example.com/Ethernet";
  prefix "eth";
  import ietf-interfaces {
    prefix if;
  }
  augment "/if:interfaces/if:interface" {
    when "if:type = 'ethernetCsmacd'";
    container ethernet {
      must "../if:location" {
        description
          "An Ethernet interface must specify the physical location of the ethernet hardware.";
      }
      choice transmission-params {
        case auto {
          leaf auto-negotiate {
            type empty;
          }
        }
        case manual {
          leaf duplex {
            type enumeration {
              enum "half";
              enum "full";
            }
          }
          leaf speed {
            type enumeration {
              enum "10Mb";
              enum "100Mb";
              enum "1Gb";
              enum "10Gb";
            }
          }
        }
      }
    }
  }
  // other ethernet specific params...
}
```

- A. Mastered
- B. Not Mastered

Answer: A

Explanation:

1 – D, 2 – F, 3 – A, 4 – E, 5 – B, 6 – G, 7 - C

NEW QUESTION 71

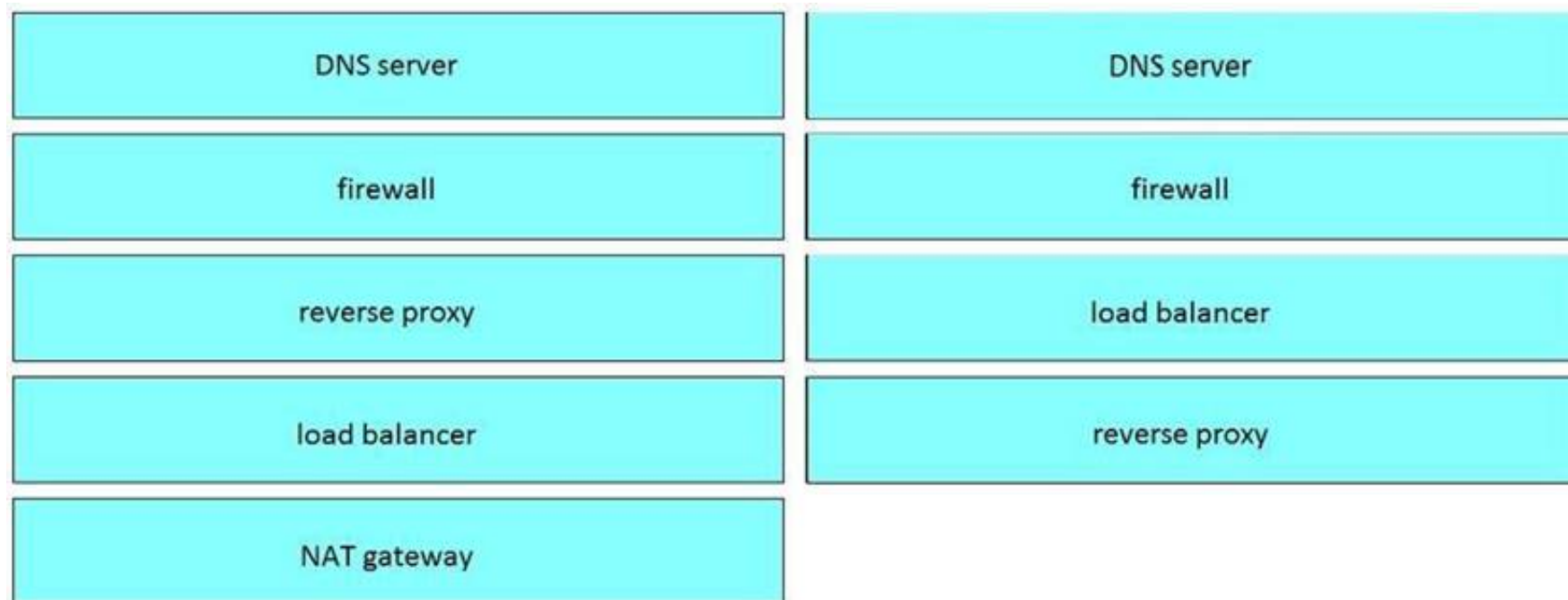
Which model-driven programmability protocol does Cisco IOS XE Software support?

- A. CORBA
- B. SSH
- C. gNMI
- D. SOAP

Answer: C

NEW QUESTION 74

Refer to the exhibit.



Which two statements about the network diagram are true? (Choose two.)

- A. PC-A and PC-B are in the same subnet.
- B. One of the routers has two connected serial interfaces.
- C. The subnet of PC-C can contain 256 hosts.
- D. R1 and R3 are in the same subnet.
- E. The subnet address of PC-B has 18 bits dedicated to the network portion.

Answer: BC

NEW QUESTION 77

Which two encoding formats do YANG interfaces support?

- A. JSON
- B. XML
- C. XHTML
- D. Plain text
- E. BER

Answer: AB

NEW QUESTION 81

Which platform is run directly using a hypervisor?

- A. Virtual
- B. Bare metal systems
- C. Containers
- D. Applications

Answer: C

NEW QUESTION 86

Drag and drop the HTTP status codes from the left onto the correct descriptions on the right.



- A. Mastered
- B. Not Mastered

Answer: A

Explanation:

1 – B, 2 – D, 3 – A, 4 – C

NEW QUESTION 87

Fill in the blanks to complete the Python script to update the Webex Teams membership of a room using the Python requests library import requests

Response Headers	A
HTTP Request	B
HTTP Response	C
Request Payload	D
Request Headers	E
Response Payload	F

- A. Mastered
- B. Not Mastered

Answer: A

Explanation:

request, headers , payload

NEW QUESTION 90

Which two statements about JSON and XML are true? (Choose two.)

- A. JSON objects are collection of key value pairs.
- B. The syntax of JSON contains tags, elements, and attributes.
- C. JSON arrays are an unordered set of key value pairs.
- D. The syntax of XML contains tags, elements, and attributes.
- E. XML objects are collections of key-value pairs.

Answer: AD

NEW QUESTION 91

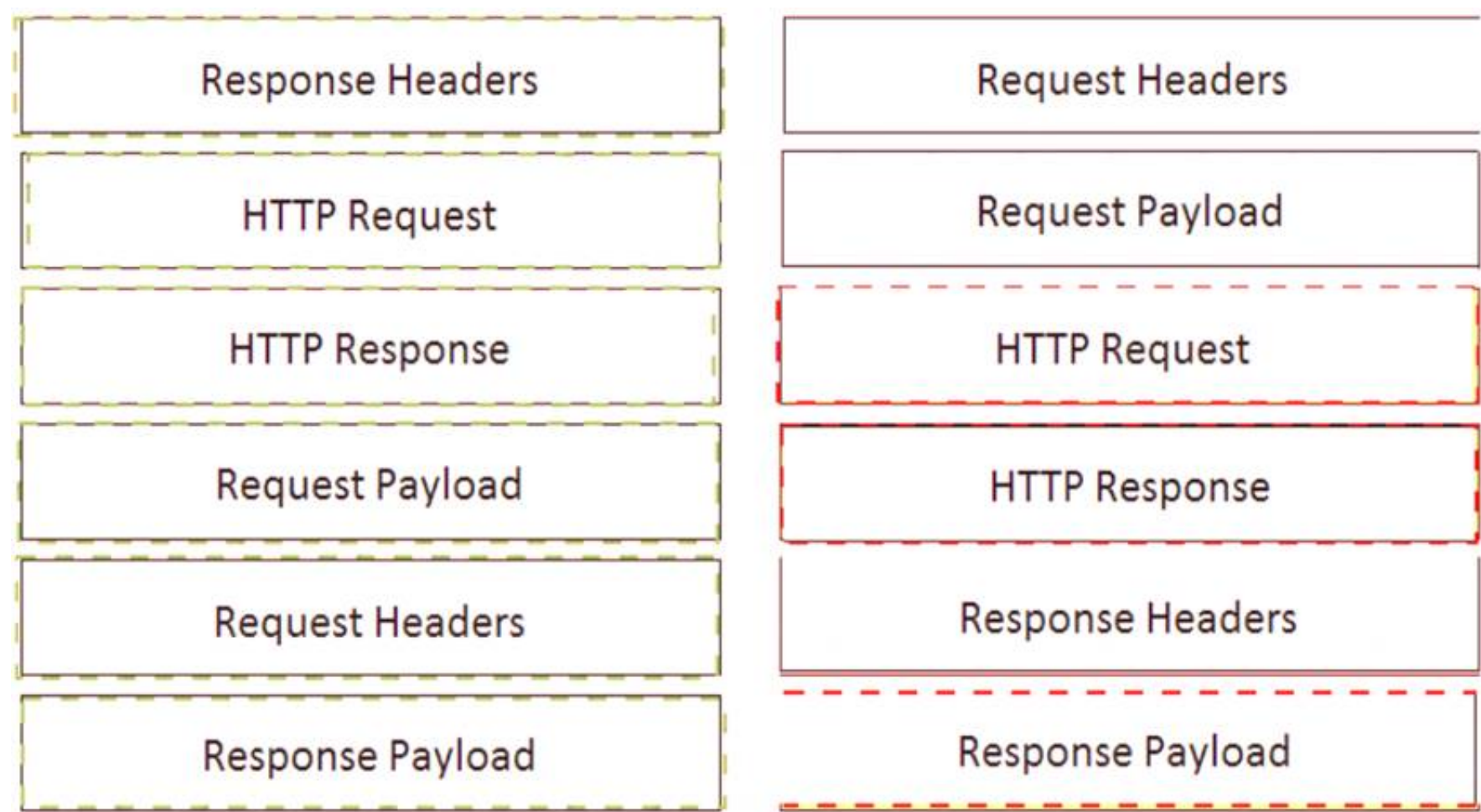
What are two security benefits of a Docker-based application?

- A. easier to patch because Docker containers include only dependencies that the application requires
- B. prevents information leakage that can occur when unhandled exceptions are returned in HTTP responses
- C. allows for separation of application that traditionally run in the same host
- D. natively secures access to secrets that are used by the running application
- E. guarantees container images are secured and free of vulnerabilities

Answer: AC

NEW QUESTION 95

Drag and Drop the Bash commands from the left onto the correct actions on the right.



- A. Mastered
B. Not Mastered

Answer: A

Explanation:

1 - d, 2 - i, 3 - e, 4 - a, 5 - j, 6 - b, 7 - g, 8 - h, 9 - c, 10 - f

NEW QUESTION 98

Which type of threat occur when an attacker can send hostile data to an interpreter within an application?

- A. Cross-site scripting
B. Sensitive data exposure
C. Broken authentication
D. Injection

Answer: D

NEW QUESTION 102

A company has written a script that creates a log bundle from the Cisco DNA Center every day. The script runs without error and the bundles are produced. However, when the script is run during business hours, report poor voice quality of phones calls. What explains this behavior?

- A. The application is running in the Voice VLAN and causes delays and jitter in the subnet.
B. The speed and duplex settings in Cisco DNA Center are sot incorrectly, which causes the transfer to be too slow.
C. 9 The script is written in a low-level programming language where there is no memory safet
D. This causes a buffer overflow and disruption on the network.
E. Generating the logs causes the CPU on the network controller to spike, which causes delays m forwarding the voice IP packets.

Answer: D

NEW QUESTION 106

Drag and drop the Docker file instructions from the onto correct descriptions on the right. Not all options are used.

User	Represents a skill group in Unified CCE.
Dialog	Represents the current state of the system.
Media	Represents an agent, supervisor or administrator.
Queue	Represents a group of users.
Team	Represents a call and the participants if the media type is voice.
SystemInfo	Sends client-side logging to the Finesse Server.
ClientLogs	Represents a user's state in a non-voice Media Routing Domain.

- A. Mastered
B. Not Mastered

Answer: A

Explanation:

1 – E, 2 – B, 3 – D, 4 – A

NEW QUESTION 108

Which two concepts describe test-driven development? (Choose two.)

- A. It enables code refactoring.
B. Write a test before writing code.
C. Implementation is driven by incremental testing of release candidates.
D. User acceptance testers development the test requirements.
E. Tests are created when code is ready for release.

Answer: BC

NEW QUESTION 112

What is the purpose of the Cisco VIRL software tool?

- A. To verify configurations against compliance standards
B. To simulate and model networks
C. To automate API workflows
D. To test performance of an application

Answer: B

NEW QUESTION 116

Refer to the exhibit.

List the clients that have used this network in the timespan

HTTP REQUEST

GET /networks/ {networkId}/clients

PARAMETERS

t0

The beginning of the timespan for the data. The maximum lookback period is 31 days from today.

timespan

The timespan for which the information will be fetched. If specifying timespan, do not specify parameter t0. The value must be in seconds and be less than or equal to 31 days. The default is 1 day.

perPage

The number of entries per page returned. Acceptable range is 3 – 1000. Default is 10.

startingAfter

A token used by the server to indicate the start of the page. Often this is a timestamp or an ID but it is not limited to those. This parameter should not be defined by client applications. The link for the first, last, prev, or next page in the HTTP Link header should define it.

endingBefore

A token used by the server to indicate the end of the page. Often this is a timestamp or an ID but it is not limited to those. This parameter should not be defined by client applications. The link for the first, last, prev, or next page in the HTTP Link header should define it.

The output of a unified diff when comparing two versions of a python script is shown. Which two “single_request _ timeout ()”

```
base_url = https://api.meraki.com/api/v0"
network_id = "L_12345678910"
api_key = "1098hadpfsiapsf8ahf8ohp"
requests.<item 1> (
    <item 2> + "/"<item 3>/" + /<item 4>, "/"<item 5>",
    headers = {
        "X-Cisco-Meraki-API-Key": "<item 6>",
        "Content-Type": "<item 7>"
    },
    <item 8>={"<item 9>":"/<item 10>})
```

- A. Option A
- B. Option B
- C. Option C
- D. Option D

Answer: BC

NEW QUESTION 120

.....

Thank You for Trying Our Product

* 100% Pass or Money Back

All our products come with a 90-day Money Back Guarantee.

* One year free update

You can enjoy free update one year. 24x7 online support.

* Trusted by Millions

We currently serve more than 30,000,000 customers.

* Shop Securely

All transactions are protected by VeriSign!

100% Pass Your 200-901 Exam with Our Prep Materials Via below:

<https://www.certleader.com/200-901-dumps.html>