

Exam Questions 352-001

CCDE Written Exam

<https://www.2passeasy.com/dumps/352-001/>



NEW QUESTION 1

Company ABC is using an Ethernet virtual circuit as its provider's DCI solution. A goal is to reduce the time to detect the link failure. Which protocol accomplishes this goal?

- A. UDLD
- B. Spanning tree bridge assurance
- C. Link aggregation group
- D. Ethernet OAM

Answer: D

NEW QUESTION 2

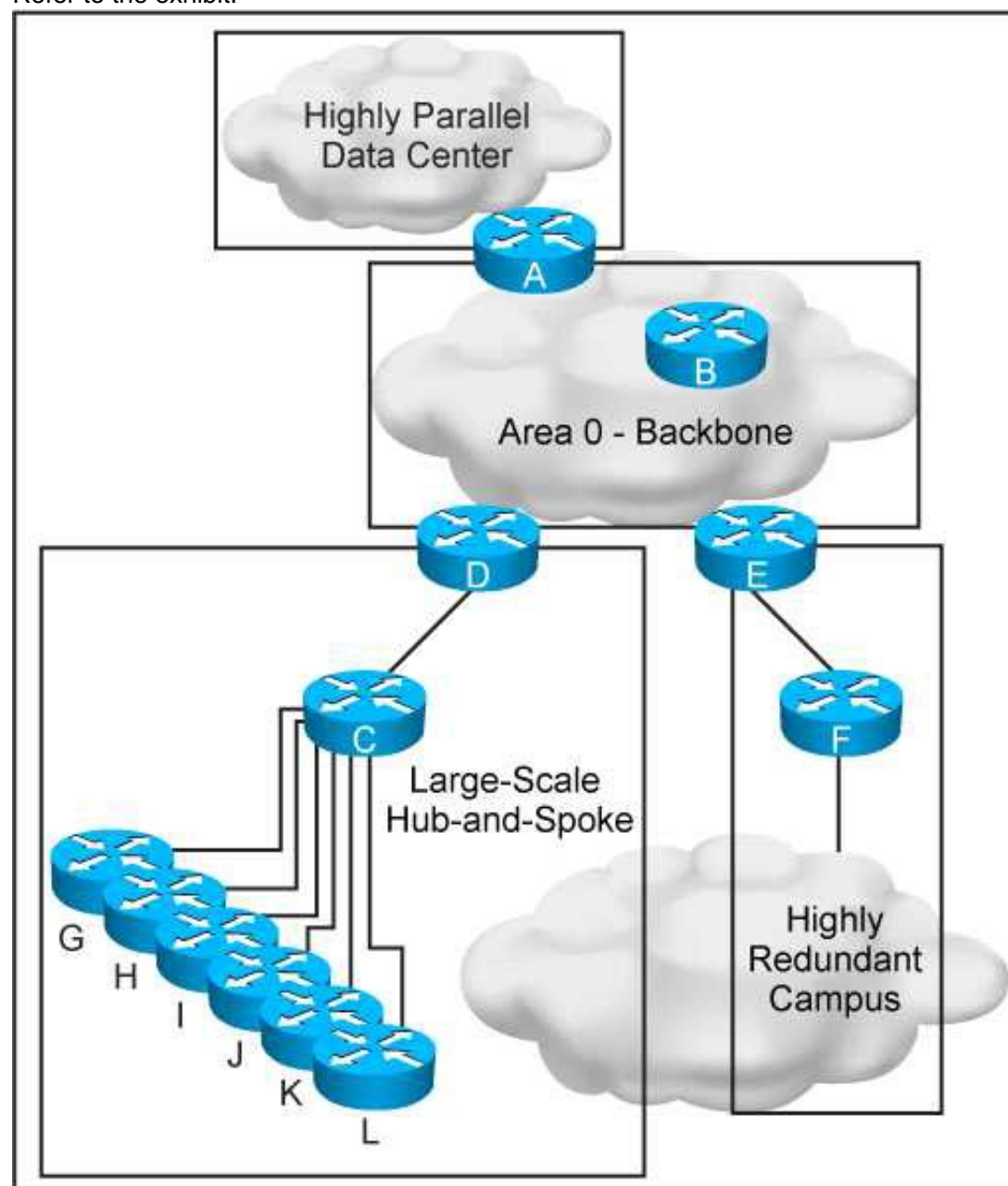
What are two benefits of following a structured hierarchical and modular design? (Choose two.)

- A. Each component can be designed independently for its role.
- B. Each component can be managed independently based on its role.
- C. Each component can be funded by different organizations based on its role.
- D. Each component can support multiple roles based on the requirements.
- E. Each component can provide redundancy for applications and services.

Answer: AB

NEW QUESTION 3

Refer to the exhibit.



This new OSPF network has four areas, but the hub-and-spoke area experiences frequent flapping. In order to fix this design failure, which two mechanisms can you use to isolate the data center area from the hub-and-spoke area without losing Ip connectivity? (Choose two)

- A. Use OSPF distribute-list filtering on router A
- B. Deploy a prefix summarization on router D
- C. Make the data center area a NSSA
- D. Make the data center area totally stub
- E. Convert the data center area to EIGRP protocol

Answer: BD

NEW QUESTION 4

Which IEEE standard is commonly used at the data link layer for an access network, in an IoT environment?

- A. Wireless Regional Area Network
- B. Low-Rate Wireless Network

- C. Wireless Local Area Network
- D. Broadband wireless metropolitan Network

Answer: B

NEW QUESTION 5

When you design a network that uses IPsec, where can you reduce MTU to avoid network fragmentation?

- A. on both ends of the TCP connection
- B. on the side closest to the client
- C. on the side closest to the server
- D. in the WAN

Answer: A

NEW QUESTION 6

Which statement about TAP and TUN devices, which are used in a Linux/KVM cloud deployment model, is true?

- A. TUN is for handling IP packets, but TAP is for handling Ethernet frames
- B. TUN is for handling Ethernet frames, but TAP is for handling IP packets
- C. TUN is for tunneling IP packets, but TAP is for tapping IP packets
- D. TUN is for tunneling Ethernet frames, but TAP is for tapping Ethernet frames

Answer: A

NEW QUESTION 7

What is a design application of control plane policing?

- A. CPP protects the control plane from reconnaissance and or denial-of-service attacks
- B. CPP protects the forwarding plane by rate –limiting excessive routing protocol traffic
- C. CPP protects the forwarding plane by allowing legitimate traffic and dropping excessive traffic
- D. CPP drop malformed packet that are sent to the CPU

Answer: A

NEW QUESTION 8

A regional ISP is running MPLS TE. These tunnels are configured manually using paths. Which technology centralizes the traffic engineering decisions to reduce operational complexity?

- A. BGP Link State
- B. DiffServ-TE
- C. TE autobandwidth
- D. Shared Risk link Group

Answer: C

NEW QUESTION 9

In which two ways is a network design improved by including IP Event Dampening? (Choose two)

- A. Provides sub-second convergence
- B. Quickly detects network failures
- C. Prevent routing loops
- D. Improves network stability
- E. Reduces processing load

Answer: DE

NEW QUESTION 10

Which reason prevents a designer from using a GDOI-based VPN to secure traffic that traverses the Internet?

- A. Enterprise host IP addresses are typically not routable.
- B. GDOI is less secure than traditional IPsec.
- C. Network address translation functions interfere with tunnel header preservation.
- D. The use of public addresses is not supported with GDOI.

Answer: C

NEW QUESTION 10

An operations engineer asks for your help with a new switching deployment. The engineer confirms that STP is enabled on an edge switch, and a particular port is connected to another switch. The switch is not receiving configuration BPDUs, although it appears that everything is functioning correctly in the network. What is the design explanation?

- A. Bridge Assurance is enabled on the port
- B. Storm control broadcast is enabled on the port
- C. REP is enabled on the port
- D. BPDU Guard is enabled on the port

Answer: C

NEW QUESTION 12

What are two possible drawbacks of ending Loop-Free Alternate to support fast convergence for most destination IGP prefixes? (Choose two)

- A. The IGP topology might need to be adjust
- B. Loop-free alternate's convergence in less than 100 milliseconds is not possible
- C. Loop-free alternate's are supported only for prefixes that are considered external tot the IGP
- D. Loop-free alternates are not supported in global VPN VRF OSPF instances
- E. Additional path computations are needed

Answer: AE

NEW QUESTION 15

In a routed access hierarchical campus design, the access-to-distribution Layer 2 uplink trunks are replaced with Layer 3 point-to-point routed links. Why is it recommended that VLANs are confined on a single access switch rather than span across multiple access switches?

- A. to allow for better convergence time
- B. to prevent the occurrence of Layer 2 loops
- C. to allow for fault isolation
- D. to prevent routing black holes

Answer: D

NEW QUESTION 19

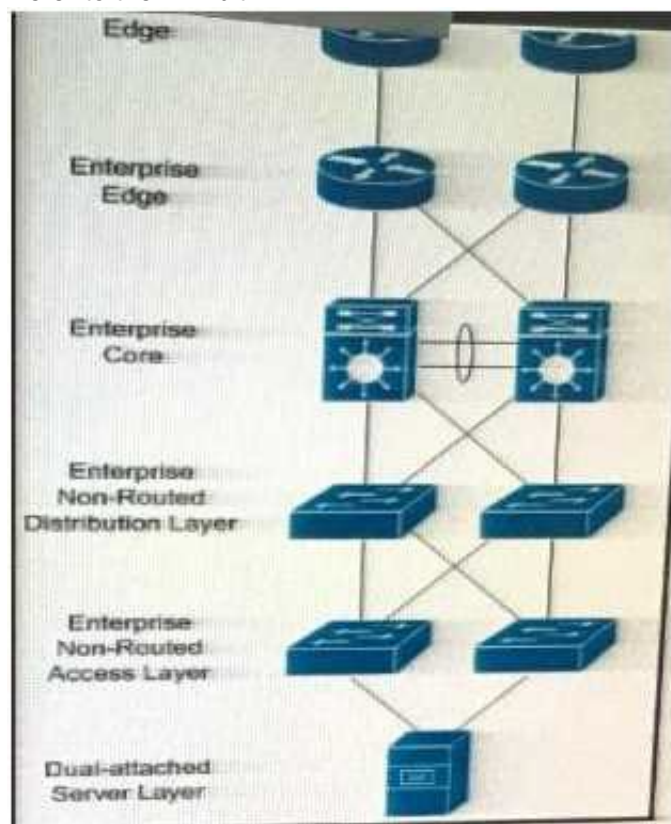
Which option is a design consideration when using routers in a distributed hardware architecture?

- A. Routing information is stored in the RIB and the FIB makes forwarding decisions as programmed on the line card hardware
- B. After a link failure occurs in the core, the RIB continues to forward the traffic while FIB convergence is in progress
- C. BGP routes are stored in the RIB and IGP routes are stored in the FIB
- D. IP routes are stored in the RIB and MPLS labels are stored in the FIB

Answer: A

NEW QUESTION 20

Refer to the Exhibit.



In which three Layers should you use nonstop Forwarding to reduce service impact in case of failure? (Choose three)

- A. Enterprise Edge
- B. Enterprise Core
- C. Service provider Edge
- D. Dual-attached sever Layer
- E. Enterprise Non-Routed Access Layer
- F. Enterprise Non-Routed Distribution Layer.

Answer: ABC

NEW QUESTION 25

Which two functions are performed at the core layer of the three-layer hierarchical network design model? (Choose two).

- A. Fault isolation
- B. Qos classification and marking boundary
- C. Fast transport
- D. Reliability
- E. Load balancing

Answer: CD

NEW QUESTION 27

Which two techniques are used in an OSPF network design to slow down the distribution of topology information caused by a rapidly flapping link? (Choose two)

- A. LSA throttling
- B. SPF throttling
- C. IP event dampening
- D. Link-state incremental SPF
- E. Link-state partial SPF

Answer: AC

NEW QUESTION 28

Which option is a benefit of using N-Port Virtualization?

- A. reduces the amount of domain IDs that are used in the fabric
- B. does not need to create zoning
- C. reduces latency when using local switching on Fibre Channel ports
- D. allows trunking to the upstream switch
- E. does not need to configure the upstream switches

Answer: A

NEW QUESTION 31

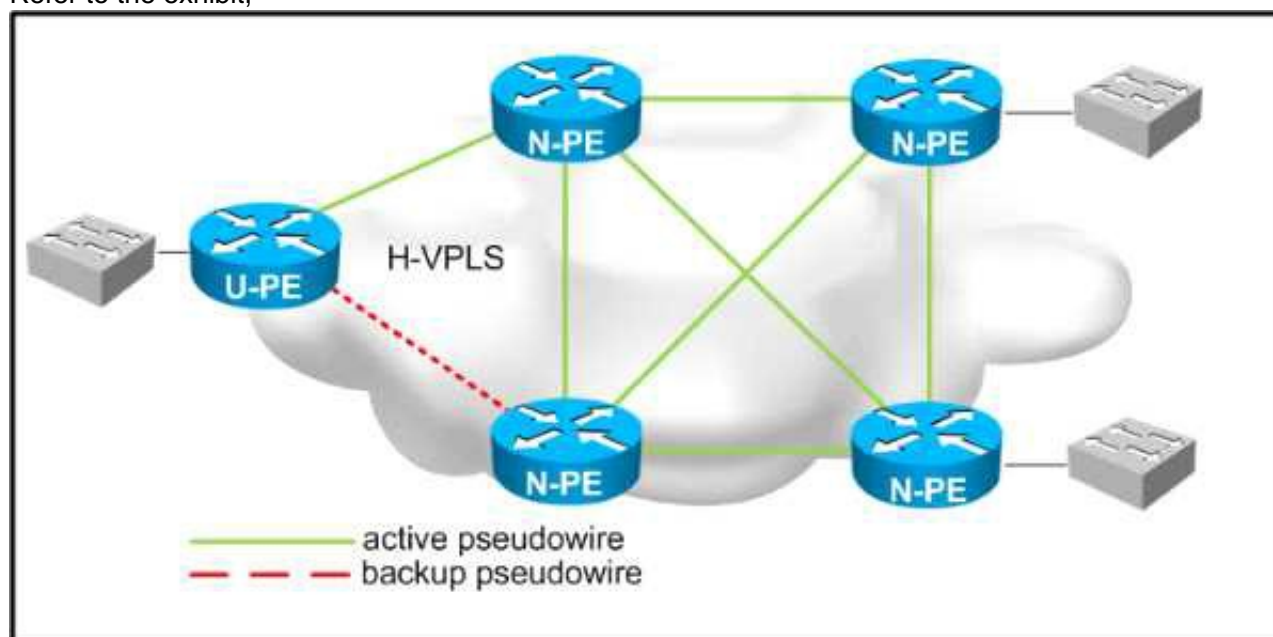
A large enterprise network running IS-IS wants to deploy IGP traffic engineering, but they are concerned that the IS-IS default metrics are not flexible enough. Which feature must be enabled to provide traffic engineering with the minimum amount of changes?

- A. IS-IS Narrow Metrics
- B. IS-IS DIS
- C. IS-IS Wide Metrics
- D. IS-IS Multitopology

Answer: C

NEW QUESTION 35

Refer to the exhibit,



Which two design considerations should be implemented on the pseudowire between N-PE and U-PE routers for a loop-free hierarchical VPLS service? (Choose two)

- A. Disable split horizon towards the U-PE router.
- B. Disable MAC learning on the U-PE router.
- C. Enable split horizon towards the N-PE routers.
- D. Disable MAC learning on the U-PE routers.
- E. Disable MAC learning on the U-PE routers.
- F. Enable split horizon towards the U-PE routers.
- G. Disable split horizon toward the N-PE routers.

Answer: AC

NEW QUESTION 39

Your customer asks you to assist with their traffic policy design. They want to guarantee a minimum amount of bandwidth to certain traffic classes. Which technique would you advise them to implement?

- A. Modular QoS CLI
- B. committed access Rate
- C. policy-based routing
- D. traffic shaping

Answer: A

NEW QUESTION 40

You are designing the QoS features for a large enterprise network that includes DMVPN. In which situation should you use the QoS pre-classify feature?

- A. When you are marking packets with the ToS bits
- B. When the QoS policy cannot be based on DSCP bits
- C. When you are marking packets with the DSCP bits
- D. When your service provider requires the DSCP bits be set

Answer: B

NEW QUESTION 41

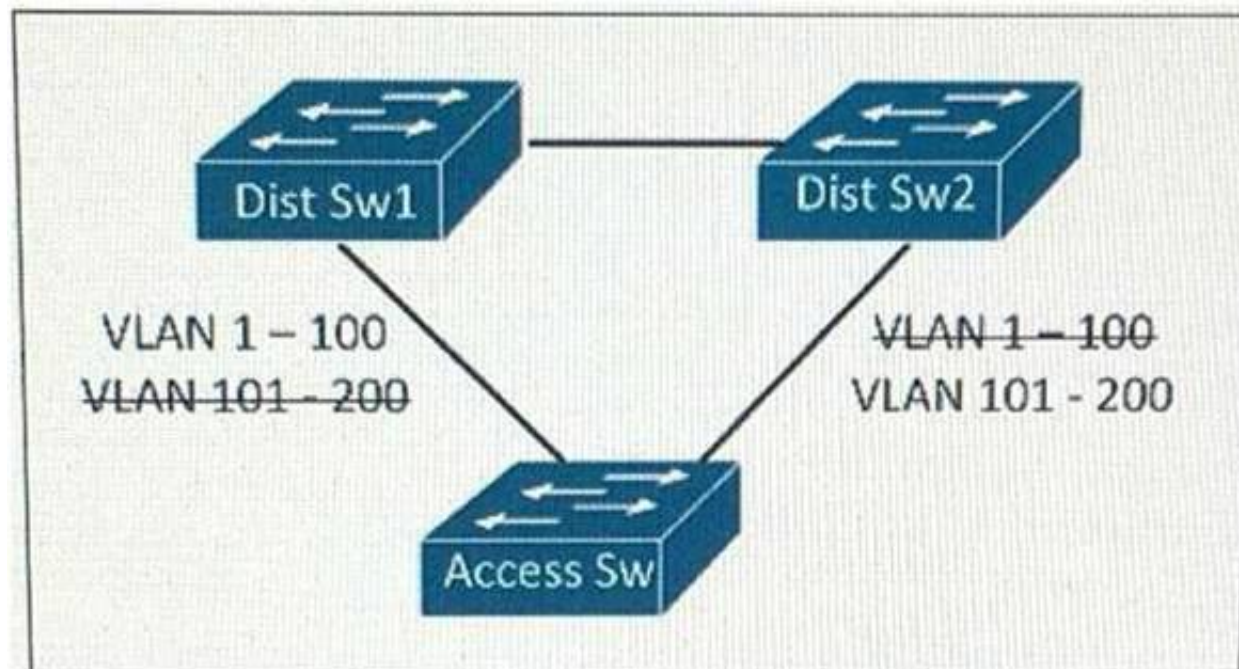
The enterprise customer ABC Corp will deploy a centralized unified communications application to provide voice, and instant messaging to their branch offices. Some of the branch offices are located in remote locations and are connected via a 1.5 Mb/s Layer 3 VPN connection. Which two ways are the most cost-effective to ensure that this new application is implemented properly? (Choose two)

- A. Use a low bitrate codec such as G 711
- B. Set voice activity detection to avoid sending packets when the conversations is silent
- C. Enable VRF-Lite on the CE router to create a separate voice VRF
- D. Set LFI on the WAN connections to interleave the small voice packets with the large data packets
- E. Set WAN optimization on the CE router to compress the voice packets for improved bandwidth utilization and performance
- F. Use a low bitrate codec such as G 729

Answer: BF

NEW QUESTION 44

Refer to the exhibit.



This layer 2 network is expected to add 150 VLANs over the next year, In addition to the existing 50 VLANs within the network which STP types will support this design requirement the least amount of CPU resource and achieving load balancing?

- A. PVST+
- B. CST
- C. MST
- D. RSTP

Answer: C

NEW QUESTION 49

In an OSPF network, users in a particular OSPF non-backbone area are complaining about slow access speeds to a shared corporate resource in another OSPF area. Traceroutes show that the users are taking a suboptimal default route to the destinations. Which solution will improve access speed?

- A. Make the area totally stubby so that the default can be followed along the best path
- B. Create a virtual link between the areas so that traffic can shortcut directly between them
- C. Leak specific summaries on the ABRs for the remote subnets in addition to the default
- D. Implement policy routing to channel the traffic in the optimal direction

Answer: C

NEW QUESTION 54

You are solving a design failure on a massive Hadoop cluster network that has an application with TCP incast behavior (also known as TCP Throughput collapse) affecting its many-to-one communications with packet loss at the last-hop network device. Which metric must be measured to ensure that the network provides the best performance for this application?

- A. Availability
- B. Bandwidth utilization
- C. Jitter values
- D. Buffer utilization

Answer: D

NEW QUESTION 59

A BGP route reflector in the network is talking longer than expected to converge during network changes. Troubleshooting has shown that the router cannot handle all the TCP acknowledgements during route updates. Which action can be performed to tune device performance?

- A. Increase the size of the large buffers
- B. Decrease the size of the small buffers
- C. Increase the keepalive timers for each BGP neighbor
- D. Increase the size of the hold queue

Answer: D

NEW QUESTION 64

When designing a network .Which method can be used to control the exit point for traffic an autonomous system, at the layer 3 control plane?

- A. Prepending AS path.
- B. Tuning the multi-exit discriminator.
- C. Setting the site of Origin extended community.
- D. Tuning the metric of the under-tying IGP.

Answer: D

NEW QUESTION 65

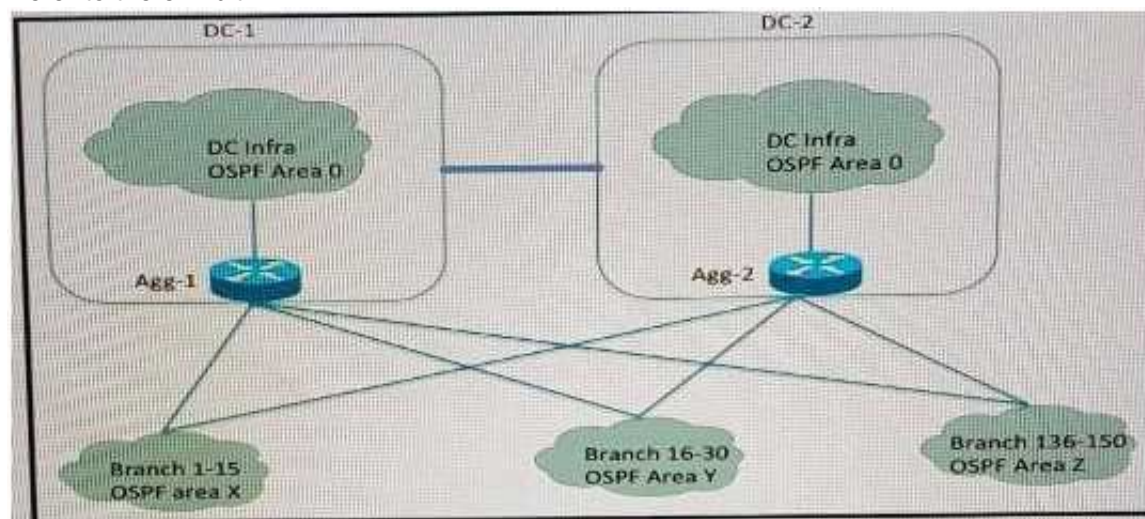
A switched network is being designed to support a manufacturing factory. Due to cost constraints, fiber-based connectivity is not an option. Which design allows for a stable network when there is a risk of interference from the manufacturing hardware in use on the factory floor?

- A. Design the network to include UDLD to detect unidirectional links and take them out of service.
- B. Design the network to include Ether Channel bundles to prevent a single-link failure from taking down a switch interconnection point.
- C. Design the network to include loop guard to prevent a loop in the switched network when a link has too much interference.
- D. Design the network to include Backbone Fast on all devices to accelerate failure convergence times.

Answer: B

NEW QUESTION 68

Refer to the exhibit



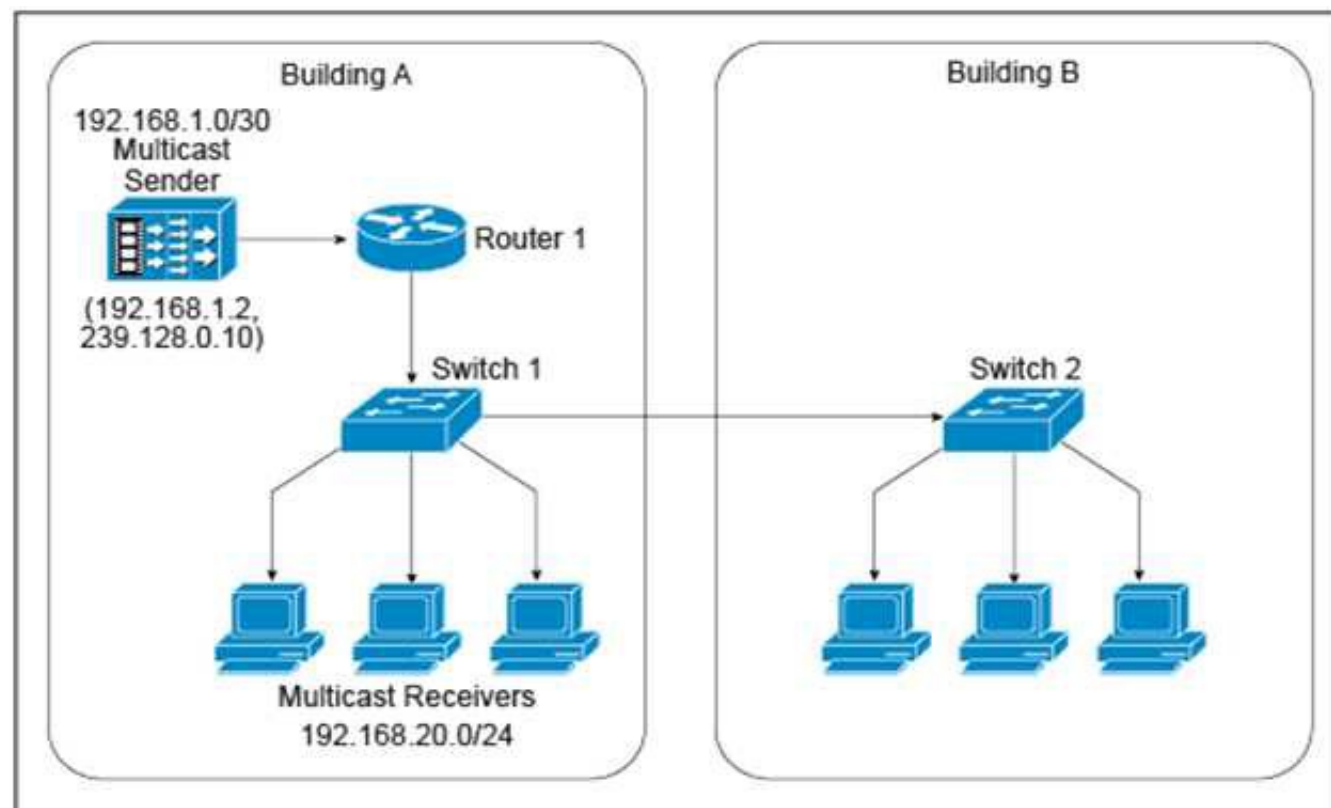
company xyz has 150 branch location across the U.S. Each branch is connected to two aggregation router one router in each data center The network is configured with Multiple OSPF with multiple OSPF areas and the aggregation router are ABRs A requirement is to keep an optimal path to the data centers and at the same time reduce the LSA propagation and SPF recomputation during a change in any part of the network Which design elements should be included on the aggregation router?

- A. OSPF NSSA
- B. distribute lists
- C. OSPF summarization
- D. OSPF totally stubby area

Answer: C

NEW QUESTION 73

Refer to the exhibit.



A new IPv4 multicast-based video-streaming service is being provisioned. During the design- validation tests, you realize that the link between the two buildings is carrying multicast traffic even when there are no receivers connected to the switch in Building B and despite IGMP snooping being enabled on both Layer 2 switches and IGMPv2 runs on the hosts. Which design change will prevent the multicast traffic from being unnecessarily flooded throughout the campus network?

- A. Enable PIM snooping on both Layer 2 switches.
- B. Enable multicast storm control on the link between Switch 1 and Switch 2.
- C. Use static Layer 2 MAC forwarding entries on Switch 1.
- D. Change the IPv4 multicast group address such that it excludes the usage of link-local MAC addresses.
- E. Ensure that Switch 1 is an IGMP querier.

Answer: D

NEW QUESTION 76

Which three network management requirements are common practices in network design? (Choose three)

- A. Ensure that all network devices have their clocks synchronized.
- B. Collect SNMP poll information for future regression analysis.
- C. Capture both ingress and egress flow-based packets, while avoiding duplication of flows.
- D. Look at average counters instead of instantaneous counters for inconsistent and bursty KPIs, such as CPU utilization and interface utilization.
- E. Validate data plane health, and application and services availability, with synthetic traffic.

Answer: ABD

NEW QUESTION 79

Which two options are considered risks or concerns when both the Internet and VPN service functions are on the same PE router? (Choose two.)

- A. Internet-based attacks can affect VPN customers.
- B. BGP cannot simultaneously run on the PE router that runs MPLS.
- C. MP-BGP prefixes increase routers' global routing tables, which affects network convergence.
- D. Failure on the PE router affects both VPN and Internet services.
- E. Customer performance can be affected by VPN traffic if Internet-based traffic is not prioritized on the PE

Answer: AD

NEW QUESTION 80

Which option describes a design benefit of root guard?

- A. It prevents switch loops caused by unidirectional point-to-point link condition on Rapid PVST+ and MST.
- B. It prevents switch loops by detecting on one-way communications on the physical port.
- C. It allows small, unmanaged switches to be plugged into ports of access switches without the risk of switch loops.
- D. It makes the port go immediately into the forwarding state after being connected.
- E. It prevents switched traffic from traversing suboptimal paths on the network.
- F. It does not generate a spanning-tree topology change upon connecting and disconnecting a station on a port.

Answer: E

NEW QUESTION 82

You are designing a solution to connect a primary data center to a disaster recovery site, The hosted applications will be web and email servers that are provided through a virtualized environment. Which connectivity technology should you consider for this design?

- A. L2TPV3.
- B. VPWS.
- C. Point-To-Point GRE tunnels.

D. VPLS.

Answer: A

NEW QUESTION 86

A network is designed to use OSPF to reach eBGP peers. For eBGP peers to stay stable in case of a link failure, what condition should be avoided?

- A. Advertise IP addresses used on eBGP statements via a normal OSPF area
- B. Use an ACL to block BGP in one direction
- C. Disable BGP synchronization
- D. Advertise IP addresses used on eBGP peer statements via eBGP

Answer: D

NEW QUESTION 90

Across a large WAN network, there will be new video traffic being distributed from a single source at any given time however, the video source might originate from different parts of the multicast domain at different times . Which multicast technology provides for this multicast traffic to be distributed with optimal path selection to the source?

- A. Any source Multicast.
- B. PIM sparse mode.
- C. Bidirectional PIM.
- D. Source Specific Multicast.

Answer: D

NEW QUESTION 91

DRAG DROP

An enterprise customer has a national WAN network based on DMVPN over the Internet, with sites located throughout the country. The customer has recently deployed VoIP throughout the entire network , and users report that it takes up to 2 seconds to establish a telephone call to an IP telephone at another office network. Drag and drop the root cause and the corresponding design solution from the left onto the correct targets on the right Not all options are used

VoIP is not supported over the Internet.	Root Cause
DMVPN spoke-to-spoke tunnels take a few seconds to establish the encryption.	
DMVPN does not support per-tunnel QoS.	Corresponding Solution
The network is using DMVPN Phase 2.	
Replace DMVPN on the WAN with Layer 3 VPN.	
Replace DMVPN on the WAN with an ELAN solution.	
Use DMVPN to set up the tunnels and GETVPN inside the tunnels to maintain the encryption.	
Per-tunnel QoS must be enabled at the DMVPN hub site.	
Migrate from DMVPN Phase 2 to DMVPN Phase 3.	

- A. Mastered
- B. Not Mastered

Answer: A

Explanation:

DMVPN spoke to spoke tunnels take a few second
Use DMVPN to set up tunnels and GETVPN for encryption

NEW QUESTION 94

As a part of a network design, you should tighten security to prevent man-in-the-middle. Which two security options ensure that authorized ARP responses take place according to know IP-to-MAC address mapping? (Choose two)

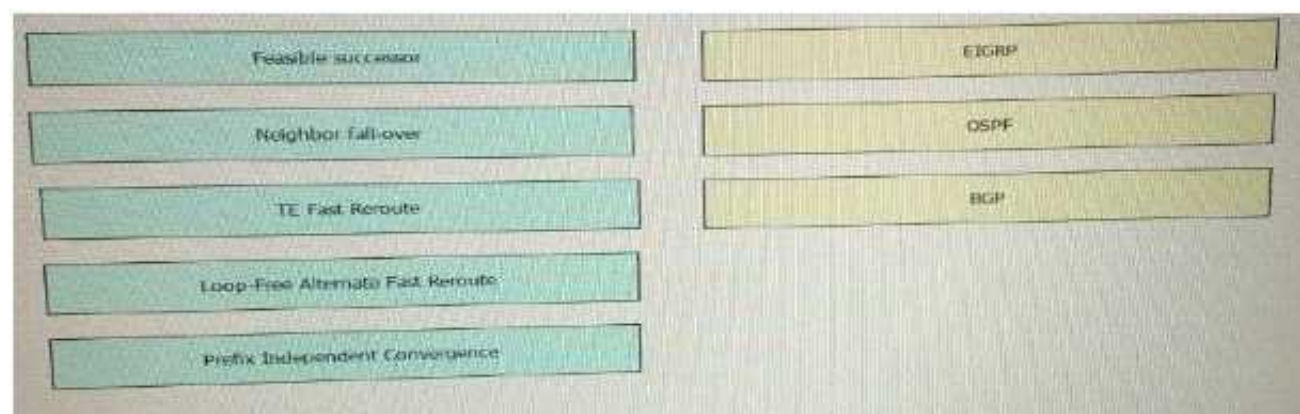
- A. DHCP snooping
- B. ARP spoofing
- C. ARP rate limiting
- D. Dynamic ARP Inspection
- E. Port security

Answer: AD

NEW QUESTION 97

DRAG DROP

Drag the fast Reroute mechanism on the left and drop it onto the corresponding routing protocol on the right



- A. Mastered
- B. Not Mastered

Answer: A

Explanation:

A, D, E

NEW QUESTION 101

Which two options are potential problems with route aggregation? (Choose two)

- A. Maintaining host IP addresses during migrations
- B. Route flapping
- C. Suboptimal routing
- D. Topology hiding
- E. Asymmetric routing
- F. Prefix hijacking

Answer: CE

NEW QUESTION 104

Which two OSPF network type combinations can you use in the design that requires spoke-to-spoke direct traffic? (Choose two.)

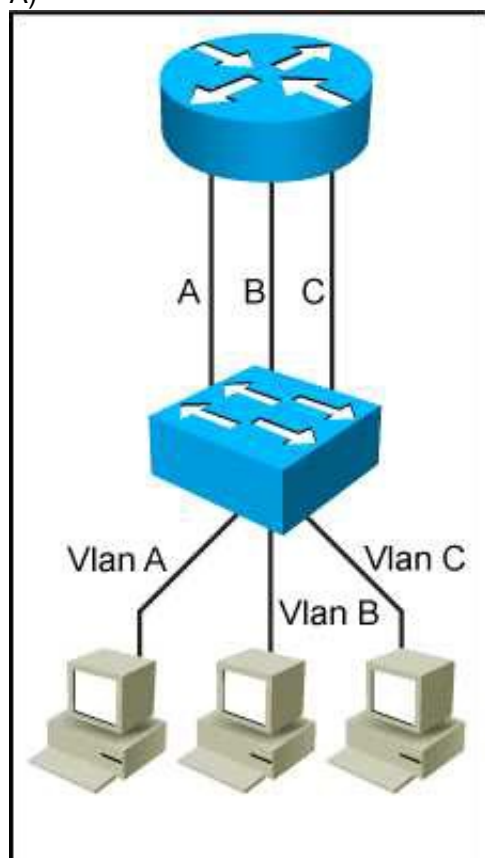
- A. hub as point-to-multipoint and spokes as non-broadcast
- B. hub as point-to-multipoint and spokes as point-to-point
- C. hub as broadcast and spokes as non-broadcast
- D. hub as point-to-point and spokes as point-to-point

Answer: BC

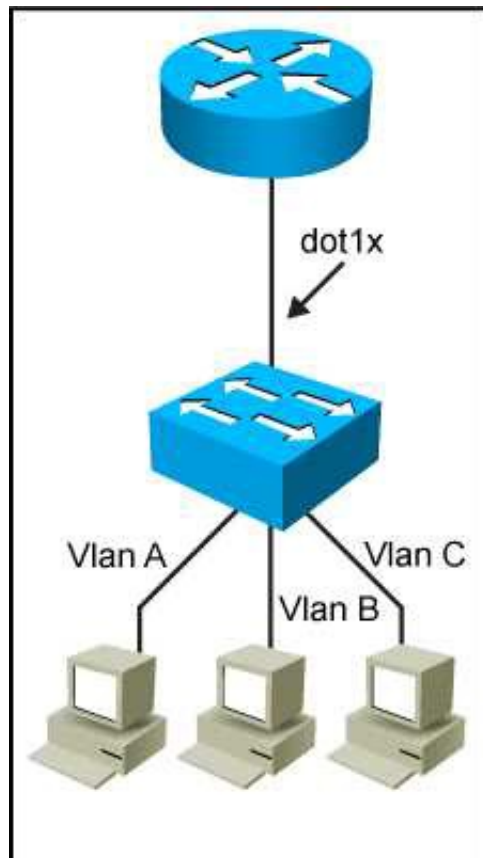
NEW QUESTION 106

Which network topology is characterized by a link fate-sharing situation?

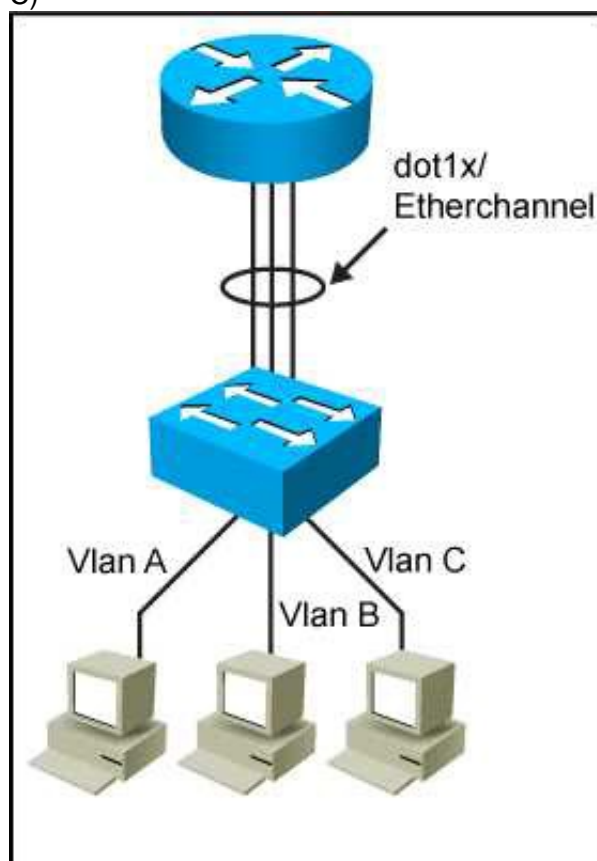
A)



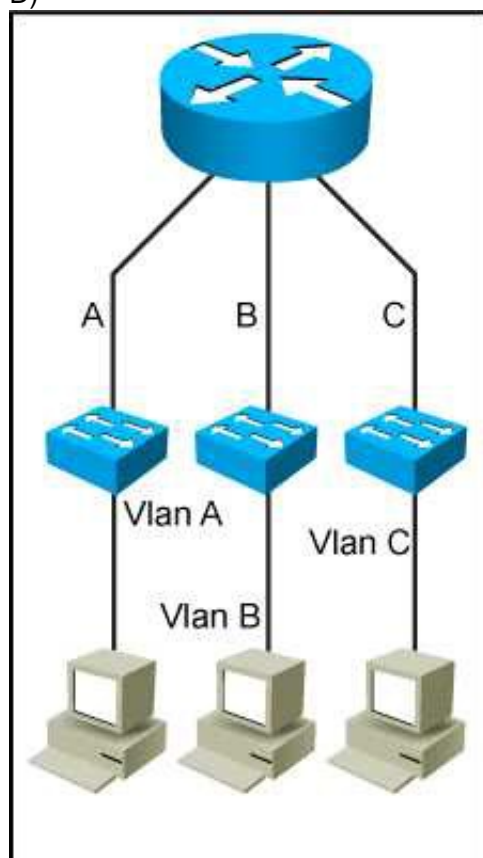
B)



C)



D)



- A. Exhibit A
- B. Exhibit B
- C. Exhibit C
- D. Exhibit D

Answer: B

NEW QUESTION 109

Which three items do you recommend for control plane hardening of an infrastructure device?
 (Choose three)

- A. To enable unused services
- B. Warning banners
- C. Routing protocol authentication
- D. Control Plane Policing
- E. Redundant AAA servers
- F. SNMPv3

Answer: CDF

NEW QUESTION 113

Which two statements about AToM are true? (Choose two)

- A. It encapsulates Layer 2 frames at the egress PE
- B. When using AToM, the IP precedence field is not copied to the MPLS packet
- C. AToM supports connecting different L2 technologies using interworking option
- D. The loopback address of the PE router must be either /24 or /32
- E. It provides support for L2VPN features on ATM interfaces

Answer: CE

NEW QUESTION 117

Which two functions are performed at the distribution layer of the three-layer hierarchical network design model? (Choose two).

- A. Fault isolation
- B. QoS classification and marking boundary
- C. Fast transport
- D. Reliability
- E. Load balancing

Answer: AE

NEW QUESTION 121

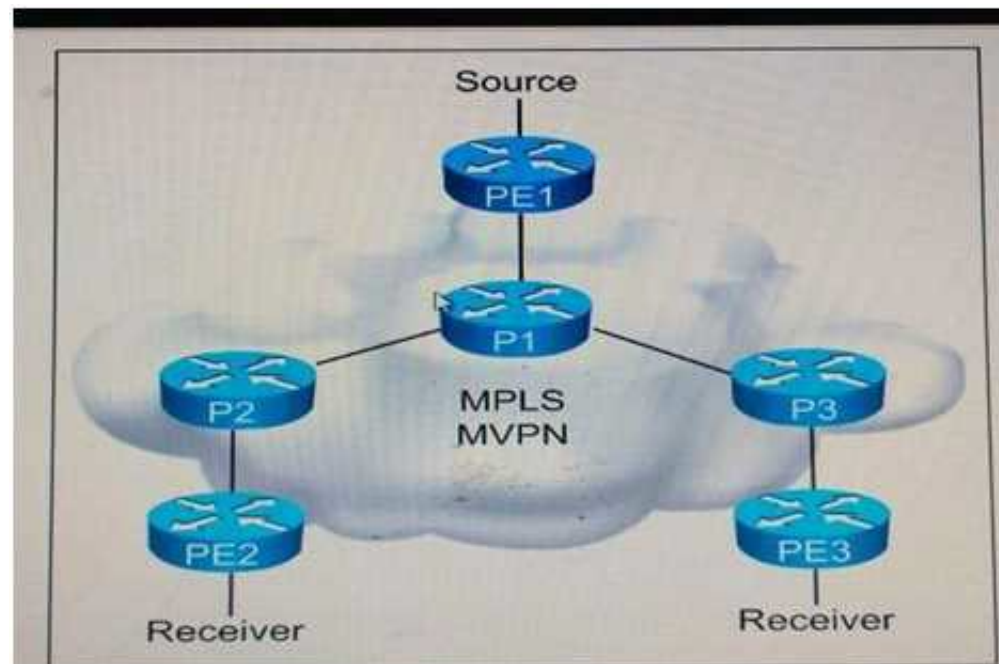
Which three options are IS-IS design considerations when connecting two Layer 3 switches directly using a 10 GBASE-T cabling and formatting an IS-IS neighbor adjacency?

- A. The default IS-IS network type is point-to-point so a DIS is not elected
- B. A DIS is elected between the IS-IS neighbors and the elected DIS is pre-empted if router with a higher system ID is connected
- C. The area, levels, and interface MTU parameters must match, and system MTU must be unique for two IS-IS routers to become adjacent
- D. Faster IS-IS hello and dead timers increase bandwidth and CPU use, and may cause instability
- E. The IS-IS hello and dead timers should be tuned to detect failures as quickly as possible
- F. A DIS is elected between the IS-IS neighbors and the elected DIS is pre-empted if a router with a lower system ID is connected
- G. The hello and dead timers must match for two IS-IS routers to become adjacent

Answer: CDF

NEW QUESTION 122

Refer to the exhibit.



You are a network designer who is given these design requirements: Multicast services must be provided for Layer 3 VPN customers
 The same forwarding technology must be used as Layer 3 VPN unicast packets
 Replication of multicast traffic is not allowed on the ingress PE
 Which multicast VPN technology conforms to the design requirements?

- A. Multipoint-to-point LDP

- B. MSDP
- C. MLDP VPN
- D. Rosen Draft using LDP

Answer: C

NEW QUESTION 124

Which main IoT migration aspect should be reviewed for a manufacturing plant?

- A. Sensors
- B. Security
- C. Applications
- D. Wi-Fi Infrastructure
- E. Ethernet Switches

Answer: A

NEW QUESTION 128

Which open source message broker is in the Cisco Cloud Center?

- A. Apache kafka
- B. HornetQ
- C. RabbitMQ
- D. Fuse Message Broker
- E. Oracle Message Broker

Answer: C

NEW QUESTION 129

Which two items are required for data plane hardening of an infrastructure device? (Choose two)

- A. Disable unused services
- B. Routing protocol authentication
- C. SNMPv3
- D. Redundant AAA servers
- E. Infrastructure ACLs
- F. Warning banners
- G. Control Plane Policing

Answer: AE

NEW QUESTION 133

You are designing dual-homed active/active ISP connections from an enterprise customer for internet services, and you have recommended BGP between the customer and ISP. When three security mechanisms do you enable to secure the connection? (Choose three)

- A. uRPF is strict mode
- B. remote triggered black holes
- C. IDS
- D. GTSM
- E. Routing protocol authentication
- F. uRPF in loose mode

Answer: BEF

NEW QUESTION 137

How must queue sizes be designed to ensure that an application functions correctly?

- A. The default queue sizes are good for any deployment
- B. Each individual device queuing delay in chain must be less than or equal to the application required delay
- C. The queuing delay on every device in chain must be exactly the same
- D. The sum of the queuing delay of all devices in chain must be less than or equal to the application required delay

Answer: D

NEW QUESTION 138

Your customer asked you to redesign there is-IS network to reduce to a minimum the number of adjacencies because the network has several routers running L1/L2 mode on the sme Ethernet segment. Which action do you recommend?

- A. Define only one router on the segment to be DIS
- B. Make the interface priority on the backup DIS lower than the primary DIS
- C. Change half the routers to L1 routers and half to L2 routers
- D. Change all routers to a single-level area

Answer: D

NEW QUESTION 140

A data center design requires monitoring of their business critical voice and video services accessed by remote locations. Which two items are applicable? (Choose two)

- A. If multiple applications share the same DSCP or CoS values, NBAR can be utilized
- B. The applications being monitored must be assigned a unique CoS value
- C. If multiple applications share the same the same DSCP or CoS values, IPFIX can be utilized
- D. The applications being monitored must be assigned a unique QoS profile
- E. The applications being monitored must be assigned unique DSCP values
- F. The reporting data must be assigned to a QoS profile to ensure accurate statistics

Answer: CF

NEW QUESTION 144

Which DCI technology utilizes a “flood and learn” technique to populate the Layer 2 forwarding table?

- A. OTV
- B. E-VPN
- C. VPLS
- D. LISP

Answer: A

NEW QUESTION 148

After a large EIGRP network had automatic summarization enabled throughout, it started experiencing routing loops. Which action should you take to quickly resolve the routing loops yet to perform summarization?

- A. Redistribute connected routes at major IP networks boundaries
- B. Redesign the IP addressing scheme
- C. Increase the AD of the automatically summarized routes
- D. Replace the automatic summarization with more specific summary routes

Answer: D

NEW QUESTION 150

A Mobile Service Provider would like to design and deploy an Ethernet service which has similar physical link failover/failback characteristics on the active/backup links as the APS/MSP SONET properties. Which Layer 2 service addresses should be considered to address this design feature?

- A. Port-Channel
- B. MLPPP
- C. Flex Link
- D. Ethernet Pseudowire

Answer: C

NEW QUESTION 155

Which three reasons to deploy an IDS sensor in promiscuous mode when you design a security solution are true? (Choose three.)

- A. Solution should be resistant to sensor failure.
- B. Solution should allow for stream normalization.
- C. Solution should not impact jitter and latency for voice traffic.
- D. Solution should allow for signature-based pattern matching.
- E. Solution should allow to deny packets inline.

Answer: ACD

NEW QUESTION 159

Which two conditions must be met for EIGRP to maintain an alternate loop-free path to a remote network? (Choose two)

- A. The Reported Distance from a successor is lower than the local Feasible Distance
- B. The Reported Distance from a successor is higher than the local Feasible Distance
- C. A feasible successor must be present
- D. The feasible Distance from a successor is lower than the local Reported Distance
- E. The feasibility condition do not need to be met

Answer: AC

NEW QUESTION 164

When designing fast convergence on a network using loop-free alternate, on which two basis can the next-hop routes be precomputed? (Choose two)

- A. Per neighbor
- B. Per network type
- C. Per link
- D. Per prefix
- E. Per failure type

Answer: CD

NEW QUESTION 165

A company requires to connect two data center sites using a hub-and-spoke design. There are 2000 remote sites. It is required to transfer MPLS labeled packets over the public Internet using one router at each remote site. These MPLS labeled packets must be encapsulated inside IP packets. Which solution must be used to simplify this network design?

- A. GET VPN encrypts the MPLS packets with IPsec.
- B. DMVPN dynamically builds GRE tunnels with MPLS encapsulation inside.
- C. Site-to-site IPsec without GRE encapsulates the MPLS packets.
- D. PPPoE encapsulates the MPLS packets
- E. L2TPv3 encapsulated the MPLS packets

Answer: B

NEW QUESTION 169

What is a design benefit of PortFast?

- A. PortFast allows small, unmanaged switches to be plugged into ports of access switches without risking switch loops
- B. PortFast disables spanning-tree on the port, which puts the port into the forwarding state immediately after it is connected
- C. Portfast does not generate a spanning-tree topology change when a station on a port is connected or disconnected
- D. PortFast detects one-way communications on the physical port, when prevents switch loops
- E. PortFast prevents switched traffic from traversing suboptimal paths on the network
- F. PortFast prevents switch loops that are caused by a unidirectional point-to-point link condition on Rapid PVST+ and MST

Answer: B

NEW QUESTION 170

Which two SAN designs appropriate to support large-scale SAN environments? (Choose two)

- A. Edge-core-edge design
- B. Fibre Channel forwarder
- C. Split fabric design
- D. Core-edge design
- E. Dual fabric design

Answer: AD

NEW QUESTION 175

As part of network design, two geographically separated data centers must be interconnected using Ethernet-over-MPLS pseudowire. The link between the sites is stable, the topology has no apparent loops, and the root bridges for the respective VLANs are stable and unchanging. Which aspect must be the part of the design to mitigate the risk of connectivity issues between the data centers?

- A. Enable Spanning Tree on one data center, and Rapid Reconfiguration of Spanning tree on the other
- B. Ensure that the spanning tree diameter for one or more VLANs is not too large.
- C. Enable UDLD on the link between the data centers.
- D. Enable root guard on the link between the data centers.

Answer: B

NEW QUESTION 180

Which solution prevents microloops from be formed during network convergence time?

- A. RSVP-TE
- B. LFA
- C. Prefix suppression
- D. RLFA

Answer: D

NEW QUESTION 181

A network engineering team is in the process of designing a lab network for a customer demonstration. The design engineer wants to show that the resiliency of the MPLS traffic Engineering Fast Reroute solution has the same failover/failback times as a traditional SONET/SDH network (around 50MSEC). In order to address both link failure and node failure within the lab typology network, which type of the MPLS TE tunnels must be considered for this demonstration?

- A. TE backup tunnel
- B. Next-hop (NHop) tunnel
- C. FRR Backup tunnel
- D. next-next-hop (NNHop) tunnel

Answer: D

NEW QUESTION 185

Which statement about SDN framework environment is true?

- A. The control plane functions is split between a SDN controller and the networking element
- B. The data plane is pulled from the networking element and put in a SDN controller
- C. The data plane is controlled by a centralized SDN element
- D. The control plane is pulled from the networking element and put in a SDN controller
- E. The control plane and data plane is pulled from the networking element and put in a SDN controller and SDN agent

Answer: D

NEW QUESTION 189

In a network with dynamic mutual redistribution between multiple OSPFv2 and EIGRP boundaries, which two mechanisms avoid suboptimal routing? (Choose two)

- A. Route filtering
- B. AD manipulation
- C. Matching EIGRP process ID
- D. Matching OSPF external routes
- E. Route tagging

Answer: AE

NEW QUESTION 192

DRAG DROP

A service provider offers Layer 2 multipoint services to their customers. Drag the protocol on the left to the target on the right to indicate the protocols that can be used to signal pseudowires.

Protocols
LDP
RSVP
BGP
L2TPv3

- A. Mastered
- B. Not Mastered

Answer: A

Explanation:

Protocols
LDP
BGP

NEW QUESTION 197

DRAG DROP

What is the definition of jitter, and how must network designers compensate for jitter so an IP network can carry real-time VoIP traffic?

Definition of jitter
Jitter is the actual delay between the time a packet is expected to transmit and when it actually transmits.
Jitter is the variation between the time a packet is expected to arrive and when it actually arrives.
Jitter is the variation between the time a packet is expected to drop and when it actually drops.

How to compensate for jitter
Set up a play-in buffer to play back the voice stream in a smooth fashion and avoid discontinuity in the voice stream.
Set up a play-out buffer to play back the voice stream in a smooth fashion and avoid discontinuity in the voice stream.

- A. Mastered
- B. Not Mastered

Answer: A

Explanation:

Definition of jitter

Jitter is the variation between the time a packet is expected to arrive and when it actually arrives.

How to compensate for jitter

Set up a play-out buffer to play back the voice stream in a smooth fashion and avoid discontinuity in the voice stream.

NEW QUESTION 201

DRAG DROP

A small local business recently had an outage after an employee plugged a switch into the corporate network, which caused the traffic pattern in the network to change. You have been tasked to redesign the network so that this does not happen again. From the left side to the right side, drag the PVRST+ features that should be implemented to prevent the corresponding root cause. Not all sources will be used.

Spanning-tree priority changed from default

DTP

VTP set to transparent

BPDU Guard

PortFast

Root Guard

Prevents changing the root bridge

Target 1

Target 2

Target 3

Prevents advertisement of unwanted VLANs

Target 4

- A. Mastered
B. Not Mastered

Answer: A

Explanation:

Prevents changing the root bridge

Spanning-tree priority changed from default

BPDU Guard

Root Guard

Prevents advertisement of unwanted VLANs

VTP set to transparent

NEW QUESTION 206

.....

THANKS FOR TRYING THE DEMO OF OUR PRODUCT

Visit Our Site to Purchase the Full Set of Actual 352-001 Exam Questions With Answers.

We Also Provide Practice Exam Software That Simulates Real Exam Environment And Has Many Self-Assessment Features. Order the 352-001 Product From:

<https://www.2passeasy.com/dumps/352-001/>

Money Back Guarantee

352-001 Practice Exam Features:

- * 352-001 Questions and Answers Updated Frequently
- * 352-001 Practice Questions Verified by Expert Senior Certified Staff
- * 352-001 Most Realistic Questions that Guarantee you a Pass on Your FirstTry
- * 352-001 Practice Test Questions in Multiple Choice Formats and Updatesfor 1 Year