



Snowflake

Exam Questions SnowPro-Core

SnowPro Core Certification Exam

About ExamBible

Your Partner of IT Exam

Found in 1998

ExamBible is a company specialized on providing high quality IT exam practice study materials, especially Cisco CCNA, CCDA, CCNP, CCIE, Checkpoint CCSE, CompTIA A+, Network+ certification practice exams and so on. We guarantee that the candidates will not only pass any IT exam at the first attempt but also get profound understanding about the certificates they have got. There are so many alike companies in this industry, however, ExamBible has its unique advantages that other companies could not achieve.

Our Advances

* 99.9% Uptime

All examinations will be up to date.

* 24/7 Quality Support

We will provide service round the clock.

* 100% Pass Rate

Our guarantee that you will pass the exam.

* Unique Gurantee

If you do not pass the exam at the first time, we will not only arrange FULL REFUND for you, but also provide you another exam of your claim, ABSOLUTELY FREE!

NEW QUESTION 1

- (Exam Topic 1)

Which interfaces can be used to create and/or manage Virtual Warehouses?

- A. The Snowflake Web Interface (UI)
- B. SQL commands
- C. Data integration tools
- D. All of the above

Answer: D

Explanation:

Reference: <https://docs.snowflake.com/en/user-guide/warehouses.html>

NEW QUESTION 2

- (Exam Topic 1)

True or False: A third-party tool that supports standard JDBC or ODBC but has no Snowflake-specific driver will be unable to connect to Snowflake.

- A. True
- B. False

Answer: B

Explanation:

<https://docs.snowflake.com/en/user-guide/jdbc.html>

Snowflake provides a JDBC type 4 driver that supports core JDBC functionality. The JDBC driver must be installed in a 64-bit environment and requires Java 1.8 (or higher). The driver can be used with most client tools/applications that support JDBC for connecting to a database server.

NEW QUESTION 3

- (Exam Topic 1)

Select the three types of tables that exist within Snowflake. Choose 3 answers

- A. Temporary
- B. Transient
- C. Provisioned
- D. Permanent

Answer: ABD

Explanation:

Reference: <https://community.snowflake.com/s/article/Making-Transient-table-by-Default>

NEW QUESTION 4

- (Exam Topic 1)

True or False: When active, a pipe requires a dedicated Virtual Warehouse to execute.

- A. True
- B. False

Answer: B

NEW QUESTION 5

- (Exam Topic 1)

Which of the following are true of multi-cluster Warehouses? Select all that apply below.

- A. A multi-cluster Warehouse can add clusters automatically based on query activity
- B. A multi-cluster Warehouse can automatically turn itself off after a period of inactivity
- C. A multi-cluster Warehouse can scale down when query activity slows
- D. A multi-cluster Warehouse can automatically turn itself on when a query is executed against it

Answer: ABCD

NEW QUESTION 6

- (Exam Topic 1)

True or False: Snowflake bills for a minimum of five minutes each time a Virtual Warehouse is started.

- A. True
- B. False

Answer: B

Explanation:

Reference: <https://docs.snowflake.com/en/user-guide/credits.html>

NEW QUESTION 7

- (Exam Topic 1)

Which of the following accurately represents how a table fits into Snowflake's logical container hierarchy? Select one.

- A. Account -> Schema -> Database -> Table
- B. Account -> Database -> Schema -> Table
- C. Database -> Schema -> Table -> Account
- D. Database -> Table -> Schema -> Account

Answer: B

Explanation:

Reference: <https://docs.snowflake.com/en/sql-reference/ddl-database.html>

NEW QUESTION 8

- (Exam Topic 1)

Data storage for individual tables can be monitored using which commands and/or object(s)? Choose 2 answers

- A. SHOW TABLES;
- B. SHOW STORAGE BY TABLE;
- C. Information Schema -> TABLE_STORAGE_METRICS
- D. Information Schema -> TABLE_HISTORY

Answer: AC

NEW QUESTION 9

- (Exam Topic 1)

The FLATTEN function is used to query which type of data in Snowflake?

- A. Structured data
- B. Semi-structured data
- C. Both of the above
- D. None of the above

Answer: B

Explanation:

Reference: <https://docs.snowflake.com/en/user-guide/querying-semistructured.html>

FLATTEN is used to unnest semi-structured data. Don't see an application for structured data as by definition it shouldn't be nested.

NEW QUESTION 10

- (Exam Topic 1)

A deterministic query is run at 8am, takes 5 minutes, and the results are cached. Which of the following statements are true?

Choose 2 answers

- A. The exact query will ALWAYS return the precomputed result set for the RESULT_CACHE_ACTIVE = time period
- B. The same exact query will return the precomputed results if the underlying data hasn't changed and the results were last accessed within the previous 24 hour period
- C. The same exact query will return the precomputed results even if the underlying data has changed as long as the results were last accessed within the previous 24 hour period
- D. The "24 hour" on the precomputed results gets renewed every time the exact query is executed

Answer: BD

Explanation:

The results cache will only be used if it's the same query AND the same role executing the query

NEW QUESTION 10

- (Exam Topic 1)

Which of the following connectors allow Multi-Factor Authentication (MFA) authorization when connecting? (Choose all that apply.)

- A. JDBC
- B. SnowSQL
- C. Snowflake Web Interface (UI)
- D. ODBC
- E. PythonD18912E1457D5D1DDCBD40AB3BF70D5D

Answer: ABCDE

Explanation:

Reference: <https://docs.snowflake.com/en/user-guide/security-mfa.html>

NEW QUESTION 13

- (Exam Topic 1)

The Query History in the Snowflake Web Interface (UI) is kept for approximately:

- A. 60 minutes
- B. 24 hours

- C. 14 days
- D. 30 days
- E. 1 year

Answer: C

Explanation:

Reference: https://docs.snowflake.com/en/sql-reference/account-usage/query_history.html

NEW QUESTION 15

- (Exam Topic 1)

Which of the following statement is true of Snowflake? Select one.

- A. It was built specifically for the cloud
- B. it was built as an on-premises solution and then potted to the cloud
- C. It was designed as a hybrid database to allow customers to store data either on premises or in the cloud
- D. It was built for Hadoop architecture
- E. It's based on an Oracle Architecture

Answer: A

NEW QUESTION 20

- (Exam Topic 1)

True or False: All Snowflake table types include fail-safe storage.

- A. True
- B. False

Answer: B

NEW QUESTION 24

- (Exam Topic 1)

True or False: A customer using SnowSQL / native connectors will be unable be unable to able to also use the Snowflake Web interface (UI) unless access to the UI is explicitly granted by supported.

- A. True
- B. False

Answer: B

Explanation:

Reference: <https://docs.snowflake.com/en/user-guide/connecting.html>

NEW QUESTION 29

- (Exam Topic 1)

Which of the following statements are true of Snowflake data loading? Choose 3 answers

- A. VARIANT "nut" values are not the same as SQL Null values
- B. It is recommended to do frequent, single row DMLS
- C. It is recommended to validate the data before loading into the Snowflake target table
- D. It is recommended to use staging tables to manage MERGE statements

Answer: ACD

NEW QUESTION 34

- (Exam Topic 1)

True or False: A Snowflake account is charged for data stored in both Internal and External Stages.

- A. True
- B. False

Answer: A

Explanation:

Reference: <https://docs.snowflake.com/en/user-guide/tables-storage-considerations.html>

NEW QUESTION 35

- (Exam Topic 1)

Which statements are true of micro-partitions? Choose 2 answers

- A. They are approximately 16MB in size
- B. They are stored compressed only if COMPRESS=TRUE on Table
- C. They are Immutable
- D. They are only encrypted in the Enterprise edition and above

Answer: AC

Explanation:

Reference: <https://medium.com/weareservian/seeing-snow-for-the-first-time-snowflake-adventures-part-1-731ddc983c69>

NEW QUESTION 40

- (Exam Topic 1)

Which statement best describes "clustering"?

- A. Clustering represents the way data is grouped together and stored within snowflake's micro-partitions
- B. The database administrator must define the clustering methodology for each Snowflake table.
- C. The clustering key must be included on the COPV command when loading data into Snowflake.
- D. Clustering can be disabled within a Snowflake account.

Answer: A

Explanation:

Reference: <https://docs.snowflake.com/en/user-guide/tables-clustering-micropartitions.html>

NEW QUESTION 45

- (Exam Topic 1)

How a Snowpipe charges calculated?

- A. Per-second/per Warehouse size
- B. Per-second/per-core granularity
- C. Number of Pipes in account
- D. Total storage bucket size

Answer: B

Explanation:

Reference: <https://docs.snowflake.com/en/user-guide/data-load-snowpipe-billing.html>

NEW QUESTION 48

- (Exam Topic 1)

True or False: Data in Fail-safe can be deleted by a user or the Snowflake team before it expires.

- A. True
- B. False

Answer: B

Explanation:

Reference: <https://blog.knoldus.com/ksnow-time-travel-and-fail-safe-in-snowflake/>

NEW QUESTION 50

- (Exam Topic 1)

Which of the following are valid Snowflake Virtual Warehouse Scaling Policies? (Choose two.)

- A. Custom
- B. Economy
- C. Optimized
- D. Standard

Answer: BD

Explanation:

Reference: <https://community.snowflake.com/s/article/Snowflake-Visualizing-Warehouse-Performance>

NEW QUESTION 51

- (Exam Topic 1)

What is the recommended method for loading data into Snowflake?

- A. Load row by row
- B. Load data in batch
- C. Load data by writing it In the Snowflake Web Interface (UI)
- D. Load data via frequent, angle row DML's

Answer: B

NEW QUESTION 55

- (Exam Topic 1)

Which of the following are best practices for users with the SYSADMIN/ACCOUNTADMIN roles? Choose 3 answers

- A. Their default role should be set to SYSTEMADMIN (the lower of the two)
- B. They should not set up multi_Factor Authentication (MFA)—as administrator they may need to change the MFA settings and those enrolled in MFA are unable to do so
- C. They should only access and 'step into' the ACCOUNTADMIN role temporarily, as needed to complete a specific operation

- D. They should ensure all database objects in the account are owned by the ACCOUNTADMIN role
- E. They should use the SYSADMIN role to perform administrative work on database objects

Answer: ACE

NEW QUESTION 60

- (Exam Topic 1)

True or False: An active warehouse is required to run a COPY INTO statement.

- A. True
- B. False

Answer: A

NEW QUESTION 63

- (Exam Topic 1)

True or false: Snowflake enforces unique, primary key, and foreign key constraints during DML operations.

- A. True
- B. False

Answer: B

Explanation:

Reference: <https://docs.snowflake.com/en/sql-reference/constraints-overview.html>

NEW QUESTION 68

- (Exam Topic 1)

Which of the following are common use cases for zero-copy cloning? Choose 3 answers

- A. Quick provisioning of Dev and Test/QA environments
- B. Data backups
- C. Point in time snapshots
- D. Performance optimization

Answer: ABC

Explanation:

Reference: <https://community.snowflake.com/s/question/0D50Z00009C3VIMSAV/zero-copy-cloning>

NEW QUESTION 69

- (Exam Topic 1)

When can a Virtual Warehouse start running queries?

- A. 12am-5am
- B. Only during administrator defined time slots
- C. When its provisioning is complete
- D. After replication

Answer: C

Explanation:

<https://docs.snowflake.com/en/user-guide/warehouses-overview.html>

NEW QUESTION 73

- (Exam Topic 1)

True or False: Snowflake's Global Services Layer gathers and maintains statistics on all columns in all micro-partitions.

- A. True
- B. False

Answer: A

Explanation:

Snowflake is a single, integrated platform delivered as-a-service. It features storage, compute, and global services layers that are physically separated but logically integrated.

NEW QUESTION 75

- (Exam Topic 1)

Which is true of Snowflake network policies? A Snowflake network policy: (Choose two.)

- A. Is available to all Snowflake Editions
- B. Is only available to customers with Business Critical Edition
- C. Restricts or enables access to specific IP addresses
- D. Is activated using an "ALTER DATABASE" command

Answer: AC

Explanation:

Reference: <https://docs.snowflake.com/en/sql-reference/sql/create-network-policy.html>

NEW QUESTION 77

- (Exam Topic 1)

Which of the following statements are true of Snowflake releases: (Choose two.)

- A. They happen approximately weekly
- B. They roll up and release approximately monthly, but customers can request early release application
- C. During a release, new customer requests/queries/connections transparently move over to the newer version
- D. A customer is assigned a 30 minute window (that can be moved anytime within a week) during which the system will be unavailable and customer is upgraded

Answer: AC

Explanation:

<https://docs.snowflake.com/en/user-guide/intro-releases.html>

NEW QUESTION 82

- (Exam Topic 1)

Select the different types of Internal Stages: (Choose three.)

- A. Named Stage
- B. User Stage
- C. Table Stage
- D. Schema Stage

Answer: ABC

Explanation:

Reference: <https://dwgeek.com/type-of-snowflake-stages-how-to-create-and-use.html/#Snowflake-Internal- Named-Stage>

NEW QUESTION 85

- (Exam Topic 1)

True or False: It is possible to query data from an Internal or named External stage without loading the data into Snowflake.

- A. True
- B. False

Answer: A

NEW QUESTION 86

- (Exam Topic 1)

True or False: Snowflake allows its customers to directly access the micro-partition files that make up its tables.

- A. True
- B. False

Answer: B

NEW QUESTION 89

- (Exam Topic 1)

True or False: Snowflake supports federated authentication in all editions.

- A. True
- B. False

Answer: A

Explanation:

Reference:

<https://community.snowflake.com/s/news/federated-authentication-sso-now-available-in-all-snowflake-editions>

NEW QUESTION 94

- (Exam Topic 1)

Which of the following statements is true of Snowflake?

- A. It was built specifically for the cloud
- B. It was built as an on-premises solution and then ported to the cloud
- C. It was designed as a hybrid database to allow customers to store data either on premises or in the cloud
- D. It was built for Hadoop architecture
- E. It's based on an Oracle Architecture

Answer: A

Explanation:

Reference: <https://www.stitchdata.com/resources/snowflake/>

NEW QUESTION 97

- (Exam Topic 1)

Which of the following commands are not blocking operations? Choose 2 answers

- A. UPDATE
- B. INSERT
- C. MERGE
- D. COPY

Answer: BD

NEW QUESTION 101

- (Exam Topic 1)

True or False: When a user creates a role, they are initially assigned ownership of the role and they maintain ownership until it is transferred to another user.

- A. True
- B. False

Answer: A

Explanation:

Reference: <https://docs.snowflake.com/en/user-guide/security-access-control-overview.html>

NEW QUESTION 103

- (Exam Topic 1)

True or False: Once created, a micro-partition will never be changed.

- A. True
- B. False

Answer: A

Explanation:

Reference: <https://interworks.com/blog/kbridges/2019/03/12/time-travel-with-snowflake/>

NEW QUESTION 108

- (Exam Topic 1)

Which formats are supported for unloading data from Snowflake? Choose 2 answers

- A. Delimited (CSV, TSV, etc.)
- B. Avro
- C. JSON
- D. ORC

Answer: AC

Explanation:

Reference: <https://docs.snowflake.com/en/user-guide/data-unload-prepare.html>

NEW QUESTION 113

- (Exam Topic 1)

Increasing the maximum number of clusters in a Multi-Cluster Warehouse is an example of:

- A. Scaling rhythmically
- B. Scaling max
- C. Scaling out
- D. Scaling Up

Answer: C

Explanation:

<https://docs.snowflake.com/en/user-guide/warehouses-considerations.html#scaling-up-vs-scaling-out>
"Scale out by adding warehouses to a multi-cluster warehouse"

NEW QUESTION 116

- (Exam Topic 1)

Snowflake provides two mechanisms to reduce data storage costs for short-lived tables. These mechanisms are:
Choose 2 answers

- A. Temporary Tables
- B. Transient Tables
- C. Provisional Tables
- D. Permanent Tables

Answer: AB

Explanation:

Reference: <https://docs.snowflake.com/en/user-guide/tables-storage-considerations.html>

NEW QUESTION 121

- (Exam Topic 1)

When creating a user it is advisable to:

Choose 2 answers

- A. Set the user to be initially disabled
- B. Force an immediate password change
- C. Set a default role for the user
- D. Set the number of minutes to unlock to 15 minutes
- E. Set the users access to expire within a specified timeframe

Answer: BC

NEW QUESTION 125

- (Exam Topic 1)

Which of the following objects can be cloned? (Choose four.)

- A. Tables
- B. Named File Formats
- C. Schemas
- D. Shares
- E. Databases
- F. Users

Answer: ABCE

Explanation:

Which Objects Can Be Cloned?

Data Containment Objects. Databases. Schemas. Tables. Streams.

Data Configuration and Transformation Objects. Stages. File Formats. Sequences. Tasks

NEW QUESTION 129

- (Exam Topic 1)

True or False: Snowpipe via RFST API can only reference External Stages as source.

- A. True
- B. False

Answer: B

Explanation:

Reference: <https://community.snowflake.com/s/article/Making-Transient-table-by-Default>

NEW QUESTION 131

- (Exam Topic 1)

Snowflake recommends, as a minimize, that all users with the following roles(s) should be enrolled in Multi-Factor Authentication (MFA):

Select one:

- A. SECURITYADMIN, ACCOUNTADMIN, PUBLIC, SYSADMIN
- B. SECURITYADMIN, ACCOUNTADMIN, SYSADMIN
- C. SECURITYADMIN, ACCOUNTADMIN
- D. ACCOUNTADMIN

Answer: D

Explanation:

Reference: <https://docs.snowflake.com/en/user-guide/security-mfa.html>

NEW QUESTION 134

- (Exam Topic 1)

Each incremental increase in Virtual Warehouse size (e.g. Medium to Large) generally results in what? Select one.

- A. More micro-partitions
- B. Better query scheduling
- C. Double the numbers of servers in the compute cluster
- D. Higher storage costs

Answer: C

NEW QUESTION 138

- (Exam Topic 1)

Which of the following connectors are available in the Downloads section of the Snowflake web Interface (UI)?
Choose 2 answers

- A. SnowSQL
- B. ODBC
- C. R
- D. HIVE

Answer: AB

Explanation:

Reference: <https://docs.snowflake.com/en/user-guide/connecting.html>

NEW QUESTION 141

- (Exam Topic 1)

True or False: Query ID's are unique across all Snowflake deployments and can be used in communication with Snowflake Support to help troubleshoot issues.

- A. True
- B. False

Answer: A

NEW QUESTION 145

- (Exam Topic 1)

Which of the following items does the Cloud services Layer manage? Choose 4 answers

- A. user authentication
- B. Metadata
- C. Query compilation and optimization
- D. external blob storage
- E. Data security

Answer: ABCE

NEW QUESTION 147

- (Exam Topic 1)

True or False the longer the data retention period, the higher the resulting storage costs.

- A. True
- B. False

Answer: A

NEW QUESTION 148

- (Exam Topic 1)

Query results are stored in the Result Cache for how long after they are last accessed, assuming no data changes have occurred?
Select one.

- A. 1 Hour
- B. 3 Hours
- C. 12 hours
- D. 24 hours

Answer: D

Explanation:

Reference: <https://community.snowflake.com/s/article/Caching-in-Snowflake-Data-Warehouse>

NEW QUESTION 150

- (Exam Topic 1)

What are the three things customers want most from their enterprise data warehouse solution? Choose 3 answers

- A. On-premise availability
- B. Simplicity
- C. Open source based
- D. Concurrency
- E. Performance

Answer: BDE

NEW QUESTION 153

- (Exam Topic 1)

Which of the following statements are true of Virtual Warehouses? (Choose all that apply.)

- A. Customers can change the size of the Warehouse after creation
- B. A Warehouse can be resized while running

- C. A Warehouse can be configured to suspend after a period of inactivity
- D. A Warehouse can be configured to auto-resume when new queries are submitted

Answer: ABCD

Explanation:

Reference: <https://docs.snowflake.com/en/user-guide/warehouses-multiclust.html>

NEW QUESTION 154

- (Exam Topic 1)

True or False: Snowflake's data warehouse was built from the ground up for the cloud in lieu of using an existing database or a platform, like Hadoop, as a base.

- A. True
- B. False

Answer: B

Explanation:

Reference: <https://docs.snowflake.com/en/user-guide/intro-key-concepts.html>

NEW QUESTION 159

- (Exam Topic 1)

What is the maximum compressed row size in Snowflake?

- A. 8KB
- B. 16MB
- C. 50MB
- D. 4000GB

Answer: B

Explanation:

MAX size for compressed data for semi-structured data type is also 16 MB. That means if our table has a semi-structured data type column with 16MB data other columns will have NULL data.

NEW QUESTION 162

- (Exam Topic 1)

Which of the following are main sections of the top navigation of the Snowflake web Interface (UI)?

- A. Database
- B. Tables
- C. Warehouses
- D. Worksheets

Answer: ACD

Explanation:

Reference: <https://docs.snowflake.com/en/user-guide/snowflake-manager.html>

NEW QUESTION 167

- (Exam Topic 1)

True or False: Snowflake charges additional fees to Data providers for each share they create.

- A. True
- B. False

Answer: B

Explanation:

"The costs for sharing data with Snowflake are minimal and straightforward. Data providers simply pay Snowflake for the data they store, and data consumers pay for the compute resources their queries consume."

NEW QUESTION 169

- (Exam Topic 1)

Which of the following statements about data sharing are true? choose 2 answers

- A. New objects created by a Data Provider are automatically shared with existing Data Consumers & Reader Accounts
- B. All database objects can be included In a shared database
- C. Reader Accounts are created and funded by Data Prowlers
- D. Shared databases are read-only

Answer: CD

NEW QUESTION 174

- (Exam Topic 2)

How often are encryption keys automatically rotated by Snowflake?

- A. 30 Days
- B. 60 Days
- C. 90 Days
- D. 365 Days

Answer: A

Explanation:

All Snowflake-managed keys are automatically rotated by Snowflake when they are more than 30 days old. Active keys are retired, and new keys are created. When Snowflake determines the retired key is no longer needed, the key is automatically destroyed.
<https://docs.snowflake.com/en/user-guide/security-encryption-manage.html#:~:text=All%20Snowflake%2Dman>

NEW QUESTION 175

- (Exam Topic 2)

True or False: Loading data into Snowflake requires that source data files be no larger than 16MB.

- A. True
- B. False

Answer: B

Explanation:

By default, COPY INTO location statements separate table data into a set of output files to take advantage of parallel operations. The maximum size for each file is set using the MAX_FILE_SIZE copy option. The default value is 16777216 (16 MB) but can be increased to accommodate larger files. The maximum file size supported is 5 GB for Amazon S3, Google Cloud Storage, or Microsoft Azure stages. To unload data to a single output file (at the potential cost of decreased performance), specify the SINGLE = true copy option in your statement. You can optionally specify a name for the file in the path.

NEW QUESTION 176

- (Exam Topic 2)

A marketing co-worker has requested the ability to change a warehouse size on their medium virtual warehouse called mktg__WH. Which of the following statements will accommodate this request?

- A. ALLOW RESIZE ON WAREHOUSE MKTG__WH TO USER MKTG__LEAD;
- B. GRANT MODIFY ON WAREHOUSE MKTG WH TO ROLE MARKETING;
- C. GRANT MODIFY ON WAREHOUSE MKTG__WH TO USER MKTG__LEAD;
- D. GRANT OPERATE ON WAREHOUSE MKTG WH TO ROLE MARKETING;

Answer: B

NEW QUESTION 179

- (Exam Topic 2)

What happens when a cloned table is replicated to a secondary database? (Select TWO)

- A. A read-only copy of the cloned tables is stored.
- B. The replication will not be successful.
- C. The physical data is replicated
- D. Additional costs for storage are charged to a secondary account
- E. Metadata pointers to cloned tables are replicated

Answer: CD

Explanation:

Cloned objects are replicated physically rather than logically to secondary databases. That is, cloned tables in a standard database do not contribute to the overall data storage unless or until DML operations on the clone add to or modify existing data. However, when a cloned table is replicated to a secondary database, the physical data is also replicated, increasing the data storage usage for your account.

<https://docs.snowflake.com/en/user-guide/database-replication-considerations.html#:~:text=Replication%20and>

NEW QUESTION 184

- (Exam Topic 2)

Which services does the Snowflake Cloud Services layer manage? (Select TWO).

- A. Compute resources
- B. Query execution
- C. Authentication
- D. Data storage
- E. Metadata

Answer: CE

Explanation:

<https://docs.snowflake.com/en/user-guide/intro-key-concepts.html>

The cloud services layer is a collection of services that coordinate activities across Snowflake. These services tie together all of the different components of Snowflake in order to process user requests, from login to query dispatch. The cloud services layer also runs on compute instances provisioned by Snowflake from the cloud provider.

Services managed in this layer include:

- > Authentication
- > Infrastructure management
- > Metadata management

- > Query parsing and optimization
- > Access control

NEW QUESTION 187

- (Exam Topic 2)

What happens when an external or an internal stage is dropped? (Select TWO).

- A. When dropping an external stage, the files are not removed and only the stage is dropped
- B. When dropping an external stage, both the stage and the files within the stage are removed
- C. When dropping an internal stage, the files are deleted with the stage and the files are recoverable
- D. When dropping an internal stage, the files are deleted with the stage and the files are not recoverable
- E. When dropping an internal stage, only selected files are deleted with the stage and are not recoverable

Answer: AC

NEW QUESTION 192

- (Exam Topic 2)

When reviewing the load for a warehouse using the load monitoring chart, the chart indicates that a high volume of Queries are always queuing in the warehouse. According to recommended best practice, what should be done to reduce the Queue volume? (Select TWO).

- A. Use multi-clustered warehousing to scale out warehouse capacity.
- B. Scale up the warehouse size to allow Queries to execute faster.
- C. Stop and start the warehouse to clear the queued queries
- D. Migrate some queries to a new warehouse to reduce load
- E. Limit user access to the warehouse so fewer queries are run against it.

Answer: AD

NEW QUESTION 193

- (Exam Topic 2)

In which use cases does Snowflake apply egress charges?

- A. Data sharing within a specific region
- B. Query result retrieval
- C. Database replication
- D. Loading data into Snowflake

Answer: A

Explanation:

Cloud providers apply data egress charges in either of the following use cases:

- > Data is transferred from one region to another within the same cloud platform.
- > Data is transferred out of the cloud platform.

<https://docs.snowflake.com/en/user-guide/billing-data-transfer.html#:~:text=Cloud%20providers%20apply%20d>

NEW QUESTION 197

- (Exam Topic 2)

What is the purpose of an External Function?

- A. To call code that executes outside of Snowflake
- B. To run a function in another Snowflake database
- C. To share data in Snowflake with external parties
- D. To ingest data from on-premises data sources

Answer: A

Explanation:

<https://docs.snowflake.com/en/sql-reference/external-functions.html>

NEW QUESTION 201

- (Exam Topic 2)

A sales table FCT_SALES has 100 million records. The following Query was executed

```
SELECT COUNT (1) FROM FCT__SALES;
```

How did Snowflake fulfill this query?

- A. Query against the result set cache
- B. Query against a virtual warehouse cache
- C. Query against the most-recently created micro-partition
- D. Query against the metadata excite

Answer: D

NEW QUESTION 205

- (Exam Topic 2)

Which Snowflake objects track DML changes made to tables, like inserts, updates, and deletes?

- A. Pipes
- B. Streams
- C. Tasks
- D. Procedures

Answer: B

Explanation:

[https://dataterrain.com/how-to-change-tracking-using-table-streams-in-snowflake/#:~:text=A%20stream%20is%](https://dataterrain.com/how-to-change-tracking-using-table-streams-in-snowflake/#:~:text=A%20stream%20is%20)

NEW QUESTION 209

- (Exam Topic 2)

Which of the following can be executed/called with Snowpipe?

- A. A User Defined Function (UDF)
- B. A stored procedure
- C. A single copy_into statement
- D. A single insert__into statement

Answer: C

NEW QUESTION 211

- (Exam Topic 2)

What happens to the underlying table data when a CLUSTER BY clause is added to a Snowflake table?

- A. Data is hashed by the cluster key to facilitate fast searches for common data values
- B. Larger micro-partitions are created for common data values to reduce the number of partitions that must be scanned
- C. Smaller micro-partitions are created for common data values to allow for more parallelism
- D. Data may be colocated by the cluster key within the micro-partitions to improve pruning performance

Answer: D

NEW QUESTION 216

- (Exam Topic 2)

Which Snowflake object enables loading data from files as soon as they are available in a cloud storage location?

- A. Pipe
- B. External stage
- C. Task
- D. Stream

Answer: A

Explanation:

Snowpipe enables loading data from files as soon as they're available in a stage. This means you can load data from files in micro-batches, making it available to users within minutes, rather than manually executing COPY statements on a schedule to load larger batches.

<https://docs.snowflake.com/en/user-guide/data-load-snowpipe-intro.html>

NEW QUESTION 221

- (Exam Topic 2)

What happens when a virtual warehouse is resized?

- A. When increasing the size of an active warehouse the compute resource for all running and queued queries on the warehouse are affected
- B. When reducing the size of a warehouse the compute resources are removed only when they are no longer being used to execute any current statements.
- C. The warehouse will be suspended while the new compute resource is provisioned and will resume automatically once provisioning is complete.
- D. Users who are trying to use the warehouse will receive an error message until the resizing is complete

Answer: B

NEW QUESTION 223

- (Exam Topic 2)

Which of the following objects can be shared through secure data sharing?

- A. Masking policy
- B. Stored procedure
- C. Task
- D. External table

Answer: D

Explanation:

Secure Data Sharing enables sharing selected objects in a database in your account with other Snowflake accounts. The following Snowflake database objects can be shared:

- > Tables
- > External tables
- > Secure views
- > Secure materialized views

> Secure UDFs

Snowflake enables the sharing of databases through shares, which are created by data providers and “imported” by data consumers.
<https://docs.snowflake.com/en/user-guide/data-sharing-intro.html#:~:text=Secure%20Data%20Sharing%20enab>

NEW QUESTION 226

- (Exam Topic 2)

When reviewing a query profile, what is a symptom that a query is too large to fit into the memory?

- A. A single join node uses more than 50% of the query time
- B. Partitions scanned is equal to partitions total
- C. An AggregateOperator node is present
- D. The query is spilling to remote storage

Answer: D

NEW QUESTION 231

- (Exam Topic 2)

What data is stored in the Snowflake storage layer? (Select TWO).

- A. Snowflake parameters
- B. Micro-partitions
- C. Query history
- D. Persisted query results
- E. Standard and secure view results

Answer: BD

NEW QUESTION 232

- (Exam Topic 2)

Which of the following commands cannot be used within a reader account?

- A. CREATE SHARE
- B. ALTER WAREHOUSE
- C. DROP ROLE
- D. SHOW SCHEMAS
- E. DESCRIBE TABLE

Answer: B

Explanation:

A reader account is intended primarily for querying data shared by the provider of the account. Adding new data to the account and/or updating shared data in the account is not supported. Changing the configuration of virtual warehouses is also not permitted as those resources are owned and managed by the provider of the account which is sharing the data.

NEW QUESTION 237

- (Exam Topic 2)

Which command can be used to stage local files from which Snowflake interface?

- A. SnowSQL
- B. Snowflake classic web interface (UI)
- C. Snowsight
- D. .NET driver

Answer: A

Explanation:

<https://docs.snowflake.com/en/user-guide/snowsql-use.html>

NEW QUESTION 242

- (Exam Topic 2)

A user has an application that writes a new Tile to a cloud storage location every 5 minutes. What would be the MOST efficient way to get the files into Snowflake?

- A. Create a task that runs a copy into operation from an external stage every 5 minutes
- B. Create a task that puts the files in an internal stage and automate the data loading wizard
- C. Create a task that runs a GET operation to intermittently check for new files
- D. Set up cloud provider notifications on the Tile location and use Snowpipe with auto-ingest

Answer: D

Explanation:

<https://docs.snowflake.com/en/user-guide/data-load-snowpipe-intro.html>

NEW QUESTION 247

- (Exam Topic 2)

The Information Schema and Account Usage Share provide storage information for which of the following objects? (Choose three.)

- A. Users
- B. Tables
- C. Databases
- D. Internal Stages

Answer: ABC

NEW QUESTION 251

- (Exam Topic 2)

True or False: Fail-safe can be disabled within a Snowflake account.

- A. True
- B. False

Answer: B

Explanation:

Reference: <https://docs.snowflake.com/en/user-guide/data-failsafe.html>

Separate and distinct from Time Travel, Fail-safe ensures historical data is protected in the event of a system failure or other catastrophic event, e.g. a hardware failure or security breach. Fail safe feature cannot be enabled or disabled from the user end .

NEW QUESTION 252

- (Exam Topic 2)

Which account ____ usage views are used to evaluate the details of dynamic data masking? (Select TWO)

- A. ROLES
- B. POLICY_REFERENCES
- C. QUERY_HISTORY
- D. RESOURCE_MONITOR
- E. ACCESS_HISTORY

Answer: BC

Explanation:

<https://docs.snowflake.com/en/user-guide/security-column-ddm-intro.html#:~:text=DESCRIBE%20MASKING>

NEW QUESTION 255

- (Exam Topic 2)

Which of the following Snowflake capabilities are available in all Snowflake editions? (Select TWO)

- A. Customer-managed encryption keys through Tri-Secret Secure
- B. Automatic encryption of all data
- C. Up to 90 days of data recovery through Time Travel
- D. Object-level access control
- E. Column-level security to apply data masking policies to tables and views

Answer: BD

Explanation:

<https://docs.snowflake.com/en/user-guide/intro-editions.html>

NEW QUESTION 258

- (Exam Topic 2)

Which of the following describes how clustering keys work in Snowflake?

- A. Clustering keys update the micro-partitions in place with a full sort, and impact the DML operations.
- B. Clustering keys sort the designated columns over time, without blocking DML operations
- C. Clustering keys create a distributed, parallel data structure of pointers to a table's rows and columns
- D. Clustering keys establish a hashed key on each node of a virtual warehouse to optimize joins at run-time

Answer: B

NEW QUESTION 260

- (Exam Topic 2)

What is a limitation of a Materialized View?

- A. A Materialized View cannot support any aggregate functions
- B. A Materialized View can only reference up to two tables
- C. A Materialized View cannot be joined with other tables
- D. A Materialized View cannot be defined with a JOIN

Answer: D

Explanation:

There are several limitations to using materialized views:

- > A materialized view can query only a single table.
- > Joins, including self-joins, are not supported.

NEW QUESTION 263

- (Exam Topic 2)

A user needs to create a materialized view in the schema MYDB.MYSCHEMA. Which statements will provide this access?

- A. GRANT ROLE MYROLE TO USER USER1;CREATE MATERIALIZED VIEW ON SCHEMA MYDB.MYSCHEMA TO ROLE MYROLE;
- B. GRANT ROLE MYROLE TO USER USER1;CREATE MATERIALIZED VIEW ON SCHEMA MYDB.MYSCHEMA TO USER USER1;
- C. GRANT ROLE MYROLE TO USER USER1;CREATE MATERIALIZED VIEW ON SCHEMA MYDB.MYSCHEMA TO USER1;
- D. GRANT ROLE MYROLE TO USER USER1;CREATE MATERIALIZED VIEW ON SCHEMA MYDB.MYSCHEMA TO MYROLE;

Answer: B

NEW QUESTION 265

- (Exam Topic 2)

What Snowflake features allow virtual warehouses to handle high concurrency workloads? (Select TWO)

- A. The ability to scale up warehouses
- B. The use of warehouse auto scaling
- C. The ability to resize warehouses
- D. Use of multi-clustered warehouses
- E. The use of warehouse indexing

Answer: BD

NEW QUESTION 268

- (Exam Topic 2)

Which Snowflake partner specializes in data catalog solutions?

- A. Alation
- B. DataRobot
- C. dbt
- D. Tableau

Answer: A

Explanation:

Alation provides Data Cataloging functionality. They state they are the 'One Place to Find, Understand, & Govern Data Across an Enterprise.'
<https://docs.snowflake.com/en/user-guide/ecosystem-all.html>

NEW QUESTION 273

- (Exam Topic 2)

A company strongly encourages all Snowflake users to self-enroll in Snowflake's default Multi-Factor Authentication (MFA) service to provide increased login security for users connecting to Snowflake.

Which application will the Snowflake users need to install on their devices in order to connect with MFA?

- A. Okta Verify
- B. Duo Mobile
- C. Microsoft Authenticator
- D. Google Authenticator

Answer: B

Explanation:

<https://docs.snowflake.com/en/user-guide/security-mfa.html>

NEW QUESTION 277

- (Exam Topic 2)

Which data type can be used to store geospatial data in Snowflake?

- A. Variant
- B. Object
- C. Geometry
- D. Geography

Answer: D

Explanation:

<https://docs.snowflake.com/en/sql-reference/data-types-geospatial.html#:~:text=have%20SRID%3D4326.-,Geos>

NEW QUESTION 278

- (Exam Topic 2)

Which of the following are best practice recommendations that should be considered when loading data into Snowflake? (Select TWO).

- A. Load files that are approximately 25 MB or smaller.
- B. Remove all dates and timestamps.
- C. Load files that are approximately 100-250 MB (or larger)
- D. Avoid using embedded characters such as commas for numeric data types

E. Remove semi-structured data types

Answer: CD

Explanation:

<https://docs.snowflake.com/en/user-guide/data-load-considerations-prepare.html>

NEW QUESTION 279

- (Exam Topic 2)

Which of the following indicates that it may be appropriate to use a clustering key for a table? (Select TWO).

- A. The table contains a column that has very low cardinality
- B. DML statements that are being issued against the table are blocked
- C. The table has a small number of micro-partitions
- D. Queries on the table are running slower than expected
- E. The clustering depth for the table is large

Answer: AE

NEW QUESTION 284

- (Exam Topic 2)

Which data types does Snowflake support when querying semi-structured data? (Select TWO)

- A. VARIANT
- B. ARRAY
- C. VARCHAR
- D. XML
- E. BLOB

Answer: AB

Explanation:

<https://docs.snowflake.com/en/user-guide/semistructured-intro.html#label-loading-semi-structured-data>

A VARIANT stores semi-structured data in Snowflake. It can store a value of any other type, including OBJECT and ARRAY.

The maximum length of a VARIANT is 16 MB.

A Snowflake ARRAY is similar to an array in many other programming languages. An ARRAY contains 0 or more pieces of data. Each element is accessed by specifying its position in the array.

NEW QUESTION 287

- (Exam Topic 2)

What is the recommended file sizing for data loading using Snowpipe?

- A. A compressed file size greater than 100 MB, and up to 250 MB
- B. A compressed file size greater than 100 GB, and up to 250 GB
- C. A compressed file size greater than 10 MB, and up to 100 MB
- D. A compressed file size greater than 1 GB, and up to 2 GB

Answer: A

Explanation:

<https://www.phdata.io/blog/how-to-optimize-snowpipe-data-load/#:~:text=Snowpipe%20is%20typically%20use>

NEW QUESTION 290

- (Exam Topic 3)

Which methods can be used to delete staged files from a Snowflake stage? (Choose two.)

- A. Use the DROP <file> command after the load completes.
- B. Specify the TEMPORARY option when creating the file format.
- C. Specify the PURGE copy option in the COPY INTO <table> command.
- D. Use the REMOVE command after the load completes.
- E. Use the DELETE LOAD HISTORY command after the load completes.

Answer: CD

NEW QUESTION 294

- (Exam Topic 3)

Which command should be used to load data from a file, located in an external stage, into a table in Snowflake?

- A. INSERT
- B. PUT
- C. GET
- D. COPY

Answer: D

NEW QUESTION 298

- (Exam Topic 3)

Which of the following is an example of an operation that can be completed without requiring compute, assuming no queries have been executed previously?

- A. SELECT SUM (ORDER_AMT) FROM SALES;
- B. SELECT AVG(ORDER_QTY) FROM SALES;
- C. SELECT MIN(ORDER_AMT) FROM SALES;
- D. SELECT ORDER_AMT * ORDER_QTY FROM SALES;

Answer: B

NEW QUESTION 299

- (Exam Topic 3)

Where is Snowflake metadata stored?

- A. Within the data files
- B. In the virtual warehouse layer
- C. In the cloud services layer
- D. In the remote storage layer

Answer: B

Explanation:

Reference:

<https://docs.snowflake.com/en/user-guide/querying-metadata.html#:~:text=Snowflake%20automatically%20gen>

NEW QUESTION 301

- (Exam Topic 3)

Which of the following features, associated with Continuous Data Protection (CDP), require additional Snowflake-provided data storage? (Choose two.)

- A. Tri-Secret Secure
- B. Time Travel
- C. Fail-safe
- D. Data encryption
- E. External stages

Answer: BC

NEW QUESTION 304

- (Exam Topic 3)

When cloning a database, what is cloned with the database? (Choose two.)

- A. Privileges on the database
- B. Existing child objects within the database
- C. Future child objects within the database
- D. Privileges on the schemas within the database
- E. Only schemas and tables within the database

Answer: BE

NEW QUESTION 308

- (Exam Topic 3)

A user created a new worksheet within the Snowsight UI and wants to share this with teammates How can this worksheet be shared?

- A. Create a zero-copy clone of the worksheet and grant permissions to teammates
- B. Create a private Data Exchange so that any teammate can use the worksheet
- C. Share the worksheet with teammates within Snowsight
- D. Create a database and grant all permissions to teammates

Answer: C

NEW QUESTION 310

- (Exam Topic 3)

Which Snowflake function will interpret an input string as a JSON document, and produce a VARIANT value?

- A. parse_json()
- B. json_extract_path_text()
- C. object_construct()
- D. flatten

Answer: B

NEW QUESTION 311

- (Exam Topic 3)

What is the minimum Snowflake edition that has column-level security enabled?

- A. Standard
- B. Enterprise

- C. Business Critical
- D. Virtual Private Snowflake

Answer: B

NEW QUESTION 314

- (Exam Topic 3)

What happens to the shared objects for users in a consumer account from a share, once a database has been created in that account?

- A. The shared objects are transferred.
- B. The shared objects are copied.
- C. The shared objects become accessible.
- D. The shared objects can be re-shared.

Answer: B

NEW QUESTION 316

- (Exam Topic 3)

What is the maximum Time Travel retention period for a temporary Snowflake table?

- A. 90 days
- B. 1 day
- C. 7 days
- D. 45 days

Answer: B

NEW QUESTION 317

- (Exam Topic 3)

How many days is load history for Snowpipe retained?

- A. 1 day
- B. 7 days
- C. 14 days
- D. 64 days

Answer: C

NEW QUESTION 319

- (Exam Topic 3)

Which of the following activities consume virtual warehouse credits in the Snowflake environment? (Choose two.)

- A. Caching query results
- B. Running EXPLAIN and SHOW commands
- C. Cloning a database
- D. Running a custom query
- E. Running COPY commands

Answer: AD

NEW QUESTION 321

- (Exam Topic 3)

What type of query benefits the MOST from search optimization?

- A. A query that uses only disjunction (i.e., OR) predicates
- B. A query that includes analytical expressions
- C. A query that uses equality predicates or predicates that use IN
- D. A query that filters on semi-structured data types

Answer: C

Explanation:

Reference: <https://community.snowflake.com/s/article/Search-Optimization-When-How-To-Use>

NEW QUESTION 324

- (Exam Topic 3)

Where can a user find and review the failed logins of a specific user for the past 30 days?

- A. The USERS view in ACCOUNT_USAGE
- B. The LOGIN_HISTORY view in ACCOUNT_USAGE
- C. The ACCESS_HISTORY view in ACCOUNT_USAGE
- D. The SESSIONS view in ACCOUNT_USAGE

Answer: B

NEW QUESTION 325

- (Exam Topic 3)

What COPY INTO SQL command should be used to unload data into multiple files?

- A. SINGLE=TRUE
- B. MULTIPLE=TRUE
- C. MULTIPLE=FALSE
- D. SINGLE=FALSE

Answer: C

NEW QUESTION 327

- (Exam Topic 3)

Which statement MOST accurately describes clustering in Snowflake?

- A. The database ACCOUNTADMIN must define the clustering methodology for each Snowflake table.
- B. Clustering is the way data is grouped together and stored within Snowflake micro-partitions.
- C. The clustering key must be included in the COPY command when loading data into Snowflake.
- D. Clustering can be disabled within a Snowflake account.

Answer: B

NEW QUESTION 328

- (Exam Topic 3)

Which of the following are considerations when using a directory table when working with unstructured data? (Choose two.)

- A. A directory table is a separate database object.
- B. Directory tables store data file metadata.
- C. A directory table will be automatically added to a stage.
- D. Directory tables do not have their own grantable privileges.
- E. Directory table data can not be refreshed manually.

Answer: BD

NEW QUESTION 333

- (Exam Topic 3)

A data provider wants to share data with a consumer who does not have a Snowflake account. The provider creates a reader account for the consumer following these steps:

- * 1. Created a user called "CONSUMER"
 - * 2. Created a database to hold the share and an extra-small warehouse to query the data
 - * 3. Granted the role PUBLIC the following privileges: Usage on the warehouse, database, and schema, and SELECT on all the objects in the share
- Based on this configuration what is true of the reader account?

- A. The reader account will automatically use the Standard edition of Snowflake.
- B. The reader account compute will be billed to the provider account.
- C. The reader account can clone data the provider has shared, but cannot re-share it.
- D. The reader account can create a copy of the shared data using CREATE TABLE AS...

Answer: C

NEW QUESTION 337

- (Exam Topic 3)

If 3 size Small virtual warehouse is made up of two servers, how many servers make up a Large warehouse?

- A. 4
- B. 8
- C. 16
- D. 32

Answer: B

Explanation:

Size specifies the amount of compute resources available per cluster in a warehouse. Snowflake supports the following warehouse sizes:

Warehouse Size	Credits / Hour	Credits / Second	Notes
X-Small	1	0.0003	Default size for warehouses created using CREATE WAREHOUSE.
Small	2	0.0006	
Medium	4	0.0011	
Large	8	0.0022	
X-Large	16	0.0044	Default for warehouses created in the web interface.
2X-Large	32	0.0089	
3X-Large	64	0.0178	
4X-Large	128	0.0356	
5X-Large	256	0.0711	Preview feature.
6X-Large	512	0.1422	Preview feature.

<https://docs.snowflake.com/en/user-guide/warehouses-overview.html>

NEW QUESTION 338

- (Exam Topic 3)

How can a row access policy be applied to a table or a view? (Choose two.)

- A. Within the policy DDL
- B. Within the create table or create view DDL
- C. By future APPLY for all objects in a schema
- D. Within a control table
- E. Using the command ALTER <object> ADD ROW ACCESS POLICY <policy>;

Answer: BD

NEW QUESTION 340

- (Exam Topic 3)

Which of the following are characteristics of security in Snowflake?

- A. Account and user authentication is only available with the Snowflake Business Critical edition.
- B. Support for HIPAA and GDPR compliance is available for UI Snowflake editions.
- C. Periodic rekeying of encrypted data is available with the Snowflake Enterprise edition and higher
- D. Private communication to internal stages is allowed in the Snowflake Enterprise edition and higher.

Answer: C

NEW QUESTION 342

- (Exam Topic 3)

What is the purpose of multi-cluster virtual warehouses?

- A. To create separate data warehouses to increase query optimization
- B. To allow users the ability to choose the type of compute nodes that make up a virtual warehouse cluster
- C. To eliminate or reduce Queuing of concurrent queries
- D. To allow the warehouse to resize automatically

Answer: C

Explanation:

<https://docs.snowflake.com/en/user-guide/warehouses-multicluster.html#:~:text=Multi%2Dcluster%20warehous>

NEW QUESTION 346

- (Exam Topic 3)

Which stages are used with the Snowflake PUT command to upload files from a local file system? (Choose three.)

- A. Schema Stage
- B. User Stage
- C. Database Stage
- D. Table Stage
- E. External Named Stage
- F. Internal Named Stage

Answer: AEF

NEW QUESTION 348

- (Exam Topic 3)

How can a user change which columns are referenced in a view?

- A. Modify the columns in the underlying table
- B. Use the ALTER VIEW command to update the view
- C. Recreate the view with the required changes
- D. Materialize the view to perform the changes

Answer: B

NEW QUESTION 351

- (Exam Topic 3)

Which Snowflake objects can be shared with other Snowflake accounts? (Choose three.)

- A. Schemas
- B. Roles
- C. Secure Views
- D. Stored Procedures
- E. Tables
- F. Secure User-Defined Functions (UDFs)

Answer: ABF

NEW QUESTION 353

- (Exam Topic 3)

What actions will prevent leveraging of the ResultSet cache? (Choose two.)

- A. Removing a column from the query SELECT list
- B. Stopping the virtual warehouse that the query is running against
- C. Clustering of the data used by the query
- D. Executing the RESULTS_SCAN() table function
- E. Changing a column that is not in the cached query

Answer: AD

NEW QUESTION 356

- (Exam Topic 3)

Which statement describes pruning?

- A. The filtering or disregarding of micro-partitions that are not needed to return a query.
- B. The return of micro-partitions values that overlap with each other to reduce a query's runtime.
- C. A service that is handled by the Snowflake Cloud Services layer to optimize caching.
- D. The ability to allow the result of a query to be accessed as if it were a table.

Answer: A

NEW QUESTION 359

- (Exam Topic 3)

What is cached during a query on a virtual warehouse?

- A. All columns in a micro-partition
- B. Any columns accessed during the query
- C. The columns in the result set of the query
- D. All rows accessed during the query

Answer: B

NEW QUESTION 363

- (Exam Topic 3)

A company needs to allow some users to see Personally Identifiable Information (PII) while limiting other users from seeing the full value of the PII. Which Snowflake feature will support this?

- A. Row access policies
- B. Data masking policies
- C. Data encryption
- D. Role based access control

Answer: B

NEW QUESTION 365

- (Exam Topic 3)

Which statement describes how Snowflake supports reader accounts?

- A. A reader account can consume data from the provider account that created it and combine it with its own data.
- B. A consumer needs to become a licensed Snowflake customer as data sharing is only supported between Snowflake accounts.
- C. The users in a reader account can query data that has been shared with the reader account and can perform DML tasks.
- D. The SHOW MANAGED ACCOUNTS command will view all the reader accounts that have been created for an account.

Answer: C

NEW QUESTION 367

- (Exam Topic 3)

User INQUISITIVE_PERSON has been granted the role DATA_SCIENCE. The role DATA_SCIENCE has privileges OWNERSHIP on the schema MARKETING of the database ANALYTICS_DW.

Which command will show all privileges granted to that schema?

- A. SHOW GRANTS ON ROLE DATA_SCIENCE
- B. SHOW GRANTS ON SCHEMA ANALYTICS_DW.MARKETING
- C. SHOW GRANTS TO USER INQUISITIVE_PERSON
- D. SHOW GRANTS OF ROLE DATA_SCIENCE

Answer: B

NEW QUESTION 369

- (Exam Topic 3)

A Snowflake user executed a query and received the results. Another user executed the same query 4 hours later. The data had not changed. What will occur?

- A. No virtual warehouse will be used, data will be read from the result cache.
- B. No virtual warehouse will be used, data will be read from the local disk cache.
- C. The default virtual warehouse will be used to read all data.
- D. The virtual warehouse that is defined at the session level will be used to read all data.

Answer: A

NEW QUESTION 373

- (Exam Topic 3)

Which of the following can be used when unloading data from Snowflake? (Choose two.)

- A. When unloading semi-structured data, it is recommended that the STRIP_OUTER_ARRAY option be used.
- B. Use the ENCODING file format option to change the encoding from the default UTF-8.
- C. The OBJECT_CONSTRUCT function can be used to convert relational data to semi-structured data.
- D. By using the SINGLE = TRUE parameter, a single file up to 5 GB in size can be exported to the storage layer.
- E. Use the PARSE_JSON function to ensure structured data will be unloaded into the VARIANT data type.

Answer: AD

NEW QUESTION 377

- (Exam Topic 3)

Assume there is a table consisting of five micro-partitions with values ranging from A to Z. Which diagram indicates a well-clustered table?

A. C:\Users\Admin\Desktop\Data\Odt data\Untitled.jpg



B. C:\Users\Admin\Desktop\Data\Odt data\Untitled.jpg



C. C:\Users\Admin\Desktop\Data\Odt data\Untitled.jpg



D. C:\Users\Admin\Desktop\Data\Odt data\Untitled.jpg



Answer: A

NEW QUESTION 381

- (Exam Topic 3)

When loading data into Snowflake, how should the data be organized?

- A. Into single files with 100-250 MB of compressed data per file
- B. Into single files with 1-100 MB of compressed data per file
- C. Into files of maximum size of 1 GB of compressed data per file
- D. Into files of maximum size of 4 GB of compressed data per file

Answer: A

NEW QUESTION 382

- (Exam Topic 3)

What is a responsibility of Snowflake's virtual warehouses?

- A. Infrastructure management
- B. Metadata management
- C. Query execution
- D. Query parsing and optimization
- E. Permanent storage of micro-partitions

Answer: C

Explanation:

Reference:

<https://docs.snowflake.com/en/user-guide/warehouses.html#:~:text=A%20warehouse%20provides%20the%20re>

NEW QUESTION 384

- (Exam Topic 3)

What is the minimum Snowflake edition needed for database failover and fail-back between Snowflake accounts for business continuity and disaster recovery?

- A. Standard
- B. Enterprise
- C. Business Critical
- D. Virtual Private Snowflake

Answer: B

NEW QUESTION 389

- (Exam Topic 3)

What are common issues found by using the Query Profile? (Choose two.)

- A. Identifying queries that will likely run very slowly before executing them
- B. Locating queries that consume a high amount of credits
- C. Identifying logical issues with the queries
- D. Identifying inefficient micro-partition pruning
- E. Data spilling to a local or remote disk

Answer: AD

NEW QUESTION 392

- (Exam Topic 3)

Which command can be used to load data files into a Snowflake stage?

- A. JOIN
- B. COPY INTO
- C. PUT
- D. GET

Answer: C

NEW QUESTION 397

- (Exam Topic 3)

A running virtual warehouse is suspended.

What is the MINIMUM amount of time that the warehouse will incur charges for when it is restarted?

- A. 1 second
- B. 60 seconds
- C. 5 minutes
- D. 60 minutes

Answer: B

NEW QUESTION 402

- (Exam Topic 3)

Which minimum Snowflake edition allows for a dedicated metadata store?

- A. Standard
- B. Enterprise
- C. Business Critical
- D. Virtual Private Snowflake

Answer: D

Explanation:

Reference: <https://docs.snowflake.com/en/user-guide/intro-editions.html>

NEW QUESTION 407

- (Exam Topic 3)

Which Snowflake feature allows a user to substitute a randomly generated identifier for sensitive data, in order to prevent unauthorized users access to the data, before loading it into Snowflake?

- A. External Tokenization
- B. External Tables
- C. Materialized Views
- D. User-Defined Table Functions (UDTF)

Answer: A

NEW QUESTION 411

- (Exam Topic 3)

How are serverless features billed?

- A. Per second multiplied by an automatic sizing for the job
- B. Per minute multiplied by an automatic sizing for the job, with a minimum of one minute
- C. Per second multiplied by the size, as determined by the SERVERLESS_FEATURES_SIZE account parameter
- D. Serverless features are not billed, unless the total cost for the month exceeds 10% of the warehouse credits, on the account

Answer: D

NEW QUESTION 413

- (Exam Topic 3)

What do the terms scale up and scale out refer to in Snowflake? (Choose two.)

- A. Scaling out adds clusters of the same size to a virtual warehouse to handle more concurrent queries.
- B. Scaling out adds clusters of varying sizes to a virtual warehouse.
- C. Scaling out adds additional database servers to an existing running cluster to handle more concurrent queries.
- D. Snowflake recommends using both scaling up and scaling out to handle more concurrent queries.
- E. Scaling up resizes a virtual warehouse so it can handle more complex workloads.
- F. Scaling up adds additional database servers to an existing running cluster to handle larger workloads.

Answer: AE

NEW QUESTION 418

- (Exam Topic 3)

What are best practice recommendations for using the ACCOUNTADMIN system-defined role in Snowflake? (Choose two.)

- A. Ensure all ACCOUNTADMIN roles use Multi-factor Authentication (MFA).
- B. All users granted ACCOUNTADMIN role must be owned by the ACCOUNTADMIN role.
- C. The ACCOUNTADMIN role must be granted to only one user.
- D. Assign the ACCOUNTADMIN role to at least two users, but as few as possible.
- E. All users granted ACCOUNTADMIN role must also be granted SECURITYADMIN role.

Answer: AD

NEW QUESTION 419

- (Exam Topic 3)

Which data types are supported by Snowflake when using semi-structured data? (Choose two.)

- A. VARIANT
- B. VARRAY
- C. STRUCT
- D. ARRAY
- E. QUEUE

Answer: AD

NEW QUESTION 421

- (Exam Topic 3)

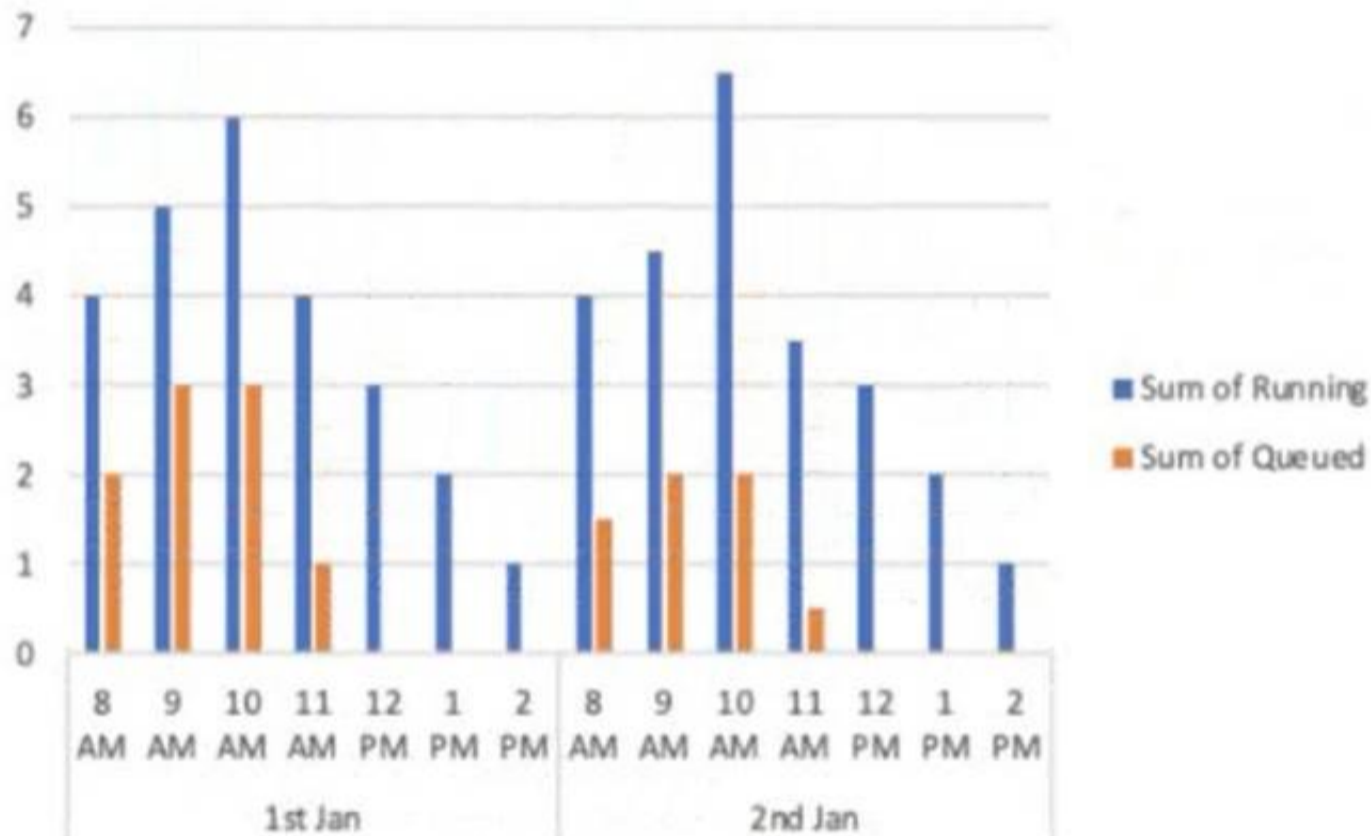
A virtual warehouse is created using the following command:

```
Create warehouse my_WH with warehouse_size = MEDIUM min_cluster_count = 1
```

```
max_cluster_count = 1
```

```
auto_suspend = 60 auto_resume = true;
```

The image below is a graphical representation of the warehouse utilization across two days.



What action should be taken to address this situation?

- A. Increase the warehouse size from Medium to 2XL.
- B. Increase the value for the parameter MAX_CONCURRENCY_LEVEL.
- C. Configure the warehouse to a multi-cluster warehouse.
- D. Lower the value of the parameter STATEMENT_QUEUED_TIMEOUT_IN_SECONDS.

Answer: B

NEW QUESTION 426

- (Exam Topic 3)

Which of the following significantly improves the performance of selective point lookup queries on a table?

- A. Clustering
- B. Materialized Views
- C. Zero-copy Cloning
- D. Search Optimization Service

Answer: A

NEW QUESTION 430

- (Exam Topic 3)

What is true about sharing data in Snowflake? (Choose two.)

- A. The Data Consumer pays for data storage as well as for data computing.
- B. The shared data is copied into the Data Consumer account, so the Consumer can modify it without impacting the base data of the Provider.
- C. A Snowflake account can both provide and consume shared data.
- D. The Provider is charged for compute resources used by the Data Consumer to query the shared data.
- E. The Data Consumer pays only for compute resources to query the shared data.

Answer: BC

NEW QUESTION 434

- (Exam Topic 3)

What internal stages are available in Snowflake? (Choose three.)

- A. Schema stage
- B. Named stage
- C. User stage
- D. Stream stage
- E. Table stage
- F. Database stage

Answer: ABE

NEW QUESTION 438

- (Exam Topic 3)

How would a user execute a series of SQL statements using a task?

- A. Include the SQL statements in the body of the task `CREATE TASK mytask .. AS INSERT INTO target1 SELECT .. FROM stream_s1 WHERE .. INSERT INTO target2 SELECT .. FROM stream_s1 WHERE ..`
- B. A stored procedure can have only one DML statement per stored procedure invocation and therefore the user should sequence stored procedure calls in the task definition `CREATE TASK mytask AS call stored_proc1(); call stored_proc2();`
- C. Use a stored procedure executing multiple SQL statements and invoke the stored procedure from the task
- D. `CREATE TASK mytask AS call stored_proc_multiple_statements_inside();`
- E. Create a task for each SQL statement (e.
- F. resulting in task1, task2, etc.) and string the series of SQL statements by having a control task calling task1, task2, et
- G. sequentially.

Answer: D

NEW QUESTION 442

- (Exam Topic 3)

True or False: Snowpipe via REST API can only reference External Stages as source.

- A. True
- B. False

Answer: B

Explanation:

Reference: <https://community.snowflake.com/s/article/Making-Transient-table-by-Default>

NEW QUESTION 447

- (Exam Topic 3)

Which TABLE function helps to convert semi-structured data to a relational representation?

- A. CHECK_JSON
- B. TO_JSON
- C. FLATTEN
- D. PARSE_JSON

Answer: D

NEW QUESTION 449

- (Exam Topic 3)

Which of the following objects can be directly restored using the UNDROP command? (Choose two.)

- A. Schema
- B. View
- C. Internal stage
- D. Table
- E. User
- F. Role

Answer: AD

NEW QUESTION 452

- (Exam Topic 3)

How should a virtual warehouse be configured if a user wants to ensure that additional multi-clusters are resumed with no delay?

- A. Configure the warehouse to a size larger than generally required
- B. Set the minimum and maximum clusters to autoscale
- C. Use the standard warehouse scaling policy
- D. Use the economy warehouse scaling policy

Answer: B

NEW QUESTION 456

- (Exam Topic 3)

What privilege should a user be granted to change permissions for new objects in a managed access schema?

- A. Grant the OWNERSHIP privilege on the schema.

- B. Grant the OWNERSHIP privilege on the database.
- C. Grant the MANAGE GRANTS global privilege.
- D. Grant ALL privileges on the schema.

Answer: C

NEW QUESTION 459

- (Exam Topic 3)

Which file formats are supported for unloading data from Snowflake? (Choose two.)

- A. Avro
- B. JSON
- C. ORC
- D. XML
- E. Delimited (CSV, TSV, etc.)

Answer: CE

Explanation:

Reference:

[https://docs.snowflake.com/en/user-guide/data-unload-prepare.html#:~:text=Supported%20File%20Formats,-Th%20comma%20\(i.e.%20CSV\).&text=File%20format%20options%20specify%20the,the%20format%20of%20th](https://docs.snowflake.com/en/user-guide/data-unload-prepare.html#:~:text=Supported%20File%20Formats,-Th%20comma%20(i.e.%20CSV).&text=File%20format%20options%20specify%20the,the%20format%20of%20th)

NEW QUESTION 461

- (Exam Topic 3)

Which SQL commands, when committed, will consume a stream and advance the stream offset? (Choose two.)

- A. UPDATE TABLE FROM STREAM
- B. SELECT FROM STREAM
- C. INSERT INTO TABLE SELECT FROM STREAM
- D. ALTER TABLE AS SELECT FROM STREAM
- E. BEGIN COMMIT

Answer: CD

NEW QUESTION 466

- (Exam Topic 3)

What versions of Snowflake should be used to manage compliance with Personal Identifiable Information (PII) requirements? (Choose two.)

- A. Custom Edition
- B. Virtual Private Snowflake
- C. Business Critical Edition
- D. Standard Edition
- E. Enterprise Edition

Answer: BC

NEW QUESTION 471

- (Exam Topic 3)

Which URL type allows users to access unstructured data without authenticating into Snowflake or passing an authorization token?

- A. Pre-signed URL
- B. Scoped URL
- C. Signed URL
- D. File URL

Answer: C

NEW QUESTION 473

- (Exam Topic 3)

The Snowflake Cloud Data Platform is described as having which of the following architectures?

- A. Shared-disk
- B. Shared-nothing
- C. Multi-cluster shared data
- D. Serverless query engine

Answer: C

NEW QUESTION 475

- (Exam Topic 3)

The Snowflake cloud services layer is responsible for which tasks? (Choose two.)

- A. Local disk caching
- B. Authentication and access control
- C. Metadata management
- D. Query processing

E. Database storage

Answer: CD

NEW QUESTION 477

- (Exam Topic 3)

What is the maximum total Continuous Data Protection (CDP) charges incurred for a temporary table?

- A. 30 days
- B. 7 days
- C. 48 hours
- D. 24 hours

Answer: D

NEW QUESTION 479

- (Exam Topic 3)

Which commands should be used to grant the privilege allowing a role to select data from all current tables and any tables that will be created later in a schema? (Choose two.)

- A. grant USAGE on all tables in schema DB1.SCHEMA to role MYROLE;
- B. grant USAGE on future tables in schema DB1.SCHEMA to role MYROLE;
- C. grant SELECT on all tables in schema DB1.SCHEMA to role MYROLE;
- D. grant SELECT on future tables in schema DB1.SCHEMA to role MYROLE;
- E. grant SELECT on all tables in database DB1 to role MYROLE;
- F. grant SELECT on future tables in database DB1 to role MYROLE;

Answer: CD

NEW QUESTION 480

- (Exam Topic 3)

Which columns are part of the result set of the Snowflake LATERAL FLATTEN command? (Choose two.)

- A. CONTENT
- B. PATH
- C. BYTE_SIZE
- D. INDEX
- E. DATATYPE

Answer: BC

NEW QUESTION 483

- (Exam Topic 3)

What are the correct parameters for time travel and fail-safe in the Snowflake Enterprise Edition?

- A. Default Time Travel Retention is set to 0 days. Maximum Time Travel Retention is 30 day
- B. Fail Safe retention time is 1 day.
- C. Default Time Travel Retention is set to 1 day. Maximum Time Travel Retention is 365 day
- D. Fail Safe retention time is 7 days.
- E. Default Time Travel Retention is set to 0 days. Maximum Time Travel Retention is 90 day
- F. Fail Safe retention time is 7 days.
- G. Default Time Travel Retention is set to 1 day. Maximum Time Travel Retention is 90 day
- H. Fail Safe retention time is 7 days.
- I. Default Time Travel Retention is set to 7 days. Maximum Time Travel Retention is 1 da
- J. Fail Safe retention time is 90 days.
- K. Default Time Travel Retention is set to 90 days. Maximum Time Travel Retention is 7 day
- L. Fail Safe retention time is 356 days.

Answer: D

NEW QUESTION 485

- (Exam Topic 3)

Which of the following objects are contained within a schema? (Choose two.)

- A. Role
- B. Stream
- C. Warehouse
- D. External table
- E. User
- F. Share

Answer: CD

NEW QUESTION 490

- (Exam Topic 3)

What is the SNOWFLAKE.ACCOUNT_USAGE view that contains information about which objects were read by queries within the last 365 days (1 year)?

- A. VIEWS_HISTORY
- B. OBJECT_HISTORY
- C. ACCESS_HISTORY
- D. LOGIN_HISTORY

Answer: C

NEW QUESTION 491

- (Exam Topic 3)

Which Snowflake architectural layer is responsible for a query execution plan?

- A. Compute
- B. Data storage
- C. Cloud services
- D. Cloud provider

Answer: D

NEW QUESTION 492

- (Exam Topic 3)

Which Snowflake tool would be BEST to troubleshoot network connectivity?

- A. SnowCLI
- B. SnowUI
- C. SnowSQL
- D. SnowCD

Answer: D

Explanation:

[https://docs.snowflake.com/en/user-guide/snowcd.html#:~:text=SnowCD%20\(i.e.%20Snowflake%20Connectivi](https://docs.snowflake.com/en/user-guide/snowcd.html#:~:text=SnowCD%20(i.e.%20Snowflake%20Connectivi)

NEW QUESTION 494

- (Exam Topic 3)

When cloning a database containing stored procedures and regular views, that have fully qualified table references, which of the following will occur?

- A. The cloned views and the stored procedures will reference the cloned tables in the cloned database.
- B. An error will occur, as views with qualified references cannot be cloned.
- C. An error will occur, as stored objects cannot be cloned.
- D. The stored procedures and views will refer to tables in the source database.

Answer: D

NEW QUESTION 496

- (Exam Topic 3)

How does Snowflake allow a data provider with an Azure account in central Canada to share data with a data consumer on AWS in Australia?

- A. The data provider in Azure Central Canada can create a direct share to AWS Asia Pacific, if they are both in the same organization.
- B. The data consumer and data provider can form a Data Exchange within the same organization to create a share from Azure Central Canada to AWS Asia Pacific.
- C. The data provider uses the GET DATA workflow in the Snowflake Data Marketplace to create a share between Azure Central Canada and AWS Asia Pacific.
- D. The data provider must replicate the database to a secondary account in AWS Asia Pacific within the same organization then create a share to the data consumer's account.

Answer: C

NEW QUESTION 500

- (Exam Topic 3)

What features that are part of the Continuous Data Protection (CDP) feature set in Snowflake do not require additional configuration? (Choose two.)

- A. Row level access policies
- B. Data masking policies
- C. Data encryption
- D. Time Travel
- E. External tokenization

Answer: CD

NEW QUESTION 502

- (Exam Topic 3)

Which of the following statements describe features of Snowflake data caching? (Choose two.)

- A. When a virtual warehouse is suspended, the data cache is saved on the remote storage layer.
- B. When the data cache is full, the least-recently used data will be cleared to make room.
- C. A user can only access their own queries from the query result cache.
- D. A user must set USE_METADATA_CACHE to TRUE to use the metadata cache in queries.
- E. The RESULT_SCAN table function can access and filter the contents of the query result cache.

Answer: BD

NEW QUESTION 503

- (Exam Topic 3)

Which of the following features are available with the Snowflake Enterprise edition? (Choose two.)

- A. Database replication and failover
- B. Automated index management
- C. Customer managed keys (Tri-secret secure)
- D. Extended time travel
- E. Native support for geospatial data

Answer: AD

NEW QUESTION 508

.....

Relate Links

100% Pass Your SnowPro-Core Exam with Examible Prep Materials

<https://www.exambible.com/SnowPro-Core-exam/>

Contact us

We are proud of our high-quality customer service, which serves you around the clock 24/7.

Viste - <https://www.exambible.com/>