

# Cisco

## Exam Questions 800-150

Supporting Cisco Devices for Field Technicians



#### NEW QUESTION 1

Why is it important to verify the update status after the initial upgrade process when upgrading firmware on a Cisco UCS C-Series server using the Host UpgradeUtility?

- A. To generate a report for compliance documentation
- B. To confirm that all intended components were successfully updated
- C. To ensure compatibility with third-party applications
- D. To activate the new licenses associated with the firmware

**Answer: B**

#### NEW QUESTION 2

Which common CLI command is used to install Cisco NX-OS Software?

- A. copy tftp: running-config
- B. install all
- C. install kickstart
- D. boot system

**Answer: B**

#### NEW QUESTION 3

Which step must be taken to minimize data traffic impact when replacing a fabric interconnect?

- A. Use the fabric evacuation procedure on the subordinate fabric interconnect.
- B. Disable highavailability before replacement.
- C. Remove all cable connections at once.
- D. Power down both fabric interconnects simultaneously.

**Answer: A**

#### NEW QUESTION 4

What is the purpose of the packages.conf file in Install mode on Cisco IOS XE Software supported switches?

- A. It is used to extract the bin file during the installation process.
- B. It determines which software packages need to be loaded and in what order during boot up.
- C. It contains the entire bundled software image in a single file.
- D. It is a subdirectory in flash memory where individual software packages are stored.

**Answer: B**

#### NEW QUESTION 5

Which action must be taken before powering down the endpoint during the replacement process of a Cisco collaboration device?

- A. Reset the device to factory settings.
- B. Back up the configuration.
- C. Activate the new device.
- D. Install the new hardware.

**Answer: B**

#### NEW QUESTION 6

Which protocol should be analyzed when troubleshooting call quality between IP phones?

- A. SIP
- B. SCCP
- C. H.323
- D. RTP

**Answer: D**

#### NEW QUESTION 7

Which command prompt commands provide the most thorough network diagnostic information when troubleshooting connectivity issues between a Windows PC and a Cisco device?

- A. ipconfig /all ping
- B. netstat -anetsh wlan show interfaces ipconfig /releaseipconfig /renew
- C. ping tracert netstat
- D. nslookup arp -a route print

**Answer: A**

#### NEW QUESTION 8

What is the recommended resistance value range to ensure proper grounding when using an antistatic strap to perform work on electrical components?

- A. Between 0.1 and 1 megaohms
- B. Between 1 and 10 megaohms
- C. Between 10 and 100 megaohms
- D. Between 100 and 1000 megaohms

**Answer: B**

**NEW QUESTION 9**

DRAG DROP

Drag and drop the descriptions from the left onto the corresponding IPv4 addressing modes on the right.

address used for testing and troubleshooting on the local device	unicast
address used for one-to-everyone communication on the subnet	broadcast
address that identifies the unique node on the network	multicast
address used for single packet of one-to-many delivery	loopback

- A. Mastered
- B. Not Mastered

**Answer: A**

**Explanation:**

This content is aligned with IPv4 Addressing Fundamentals, detailed in the FLDTEC course under Device Configuration and Verification:

Unicast: A unicast address uniquely identifies a single host on a network. This is the most common address type used for standard communication between two devices.

Broadcast: Broadcast addresses (e.g., 255.255.255.255 or subnet-specific broadcast) send traffic to all hosts in the network segment. Used for ARP requests and DHCP discovery.

Multicast: Used to deliver a packet to a group of hosts interested in the data, without flooding the network like a broadcast. Multicast uses addresses from the range 224.0.0.0 to 239.255.255.255. Loopback: The loopback address (127.0.0.1) is reserved for local testing, ensuring that the TCP/IP stack is working properly without needing to access the network.

**NEW QUESTION 10**

What happens to the switch operation when a supervisor module in a Cisco Nexus switch is replaced by two supervisor modules?

- A. The switch continues to operate without any interruption.
- B. All modules in the switch are reset due to a stateless switchover.
- C. Only the affected line cards reset.
- D. The switch shuts down completely.

**Answer: B**

**NEW QUESTION 10**

What must be considered when installing a new fan module in a fixed-configuration Cisco Nexus switch?

- A. The size of the fan module must match the power supply.
- B. Fan modules can be installed only when the switch is powered off
- C. The airflow direction must be consistent with other installed modules.
- D. The fan module must be from the same manufacturing batch as the others.

**Answer: C**

**NEW QUESTION 15**

Which step must be performed immediately after powering off the device when replacing a Cisco chassis?

- A. Remove the chassis ground.
- B. Back up the device configuration.

- C. Remove the chassis.
- D. Label and remove all I/O cables.

Answer: D

**NEW QUESTION 16**

Which command is used to determine if there is sufficient space in the memory of a device before installing a new Cisco IOS image?

- A. show file-system
- B. show storage
- C. show memory
- D. show flash:

Answer: D

**NEW QUESTION 20**

DRAG DROP

Drag and drop the safety actions that must be taken prior to beginning work into order on the right for working with electrical equipment.

Verify with multimeter.	step 1
Disconnect power.	step 2
Connect ESD strap.	step 3
Locate emergency power-off switch.	step 4

- A. Mastered
- B. Not Mastered

Answer: A

Explanation:

Verify with multimeter.	Locate emergency power-off switch.
Disconnect power.	Disconnect power.
Connect ESD strap.	Verify with multimeter.
Locate emergency power-off switch.	Connect ESD strap.

**NEW QUESTION 23**

Which command is used to download a copied configuration file from a TFTP server to merge it with the running configuration of a replacement Cisco device?

- A. load tftp: running-config
- B. copy tftp: startup-config
- C. copy tftp: running-config
- D. merge tftp: running-config

Answer: C

**NEW QUESTION 28**

DRAG DROP  
 Refer to the exhibit.

interface FastEthernet0/1

Drag and drop the command names from the left onto the corresponding elements in the interface configuration mode command structure on the right.

component to configure	interface
interface type	FastEthernet
port	0
slot	1

- A. Mastered
- B. Not Mastered

**Answer:** A

**Explanation:**

Component to configure ?? interface

Interface type ?? FastEthernet

Port ?? 1

Slot ?? 0

This command structure is part of the Device Configuration and Verification section in the FLDTEC course. It teaches how to navigate and configure interfaces on Cisco devices using the IOS CLI: interface is the global configuration mode command to begin configuring a network interface. FastEthernet specifies the type of interface (could also be GigabitEthernet, Serial, etc.). 0/1 represents the slot/port structure used on Cisco devices:

The first digit (before the slash) is the slot number.

The second digit (after the slash) is the port number within that slot.

This structure allows Cisco to modularly address interfaces, especially in devices with multiple slots or module-based configurations.

**NEW QUESTION 32**

What is a feature of Cisco Meraki switches that simplifies the replacement process?

- A. Built-in configuration wizard
- B. Automatic hardware detection
- C. Offline configuration backup
- D. Cloud-based management

**Answer:** D

**NEW QUESTION 33**

Which Cisco switch series is designed to handle the combined responsibilities of core and distribution layers in a converged architecture?

- A. Meraki MS400 Series
- B. Catalyst 6500 E-Series
- C. Catalyst 1300 Series
- D. Catalyst 9000 Series

**Answer:** D

**NEW QUESTION 35**

Which layer of the OSI model provides error detection and defines how access to the media is controlled?

- A. Presentation layer
- B. Physical layer
- C. Network layer
- D. Data link layer

**Answer:** D

**NEW QUESTION 39**

What is the main advantage of using Bundle mode when installing Cisco IOS XE Software on a switch?

- A. Automatic creation of the packages.conf file
- B. Simplicity, with no need to manage individual packages
- C. Faster boot times compared to Install mode
- D. Ability to install and upgrade packages independently

**Answer: B**

**NEW QUESTION 44**

DRAG DROP

Drag and drop the Cisco NX-OS components from the left onto the corresponding descriptions on the right.

Kickstart Image	specialized bootloader that initializes the hardware
System Image	contains the full NX-OS kernel and operating system
Global configuration command mode	allows for displaying device status and configuration information
EXEC command mode	provides access to the broadest range of commands that affect the device as a whole

- A. Mastered
- B. Not Mastered

**Answer: A**

**Explanation:**

Kickstart Image	Kickstart Image
System Image	System Image
Global configuration command mode	EXEC command mode
EXEC command mode	Global configuration command mode

#### NEW QUESTION 45

Which two results are achieved by briefly pressing the restore/reset button on a Cisco Meraki switch? (Choose two.)

- A. The device reboots.
- B. A full factory restore is performed.
- C. Cloud management is disabled.
- D. The management interface is cleared.
- E. The downloaded configuration is deleted.

**Answer:** AD

#### NEW QUESTION 49

Which two devices are most commonly used in a WAN environment? (Choose two.)

- A. Hubs
- B. Optical fiber converters
- C. Modems
- D. Network interface cards
- E. Wireless access points

**Answer:** BC

#### Explanation:

In the context of Wide Area Networks (WANs), the key objective is to connect geographically separated networks using service provider infrastructure. The FLDTEC course emphasizes that WAN environments typically involve devices that can handle different physical transmission mediums and protocols.

Modems:

- Modulate and demodulate analog signals to digital signals.
- Used in WAN environments to connect over analog lines like DSL or leased lines.
- Essential for interfacing between digital routers and analog telephone networks.

Optical Fiber Converters:

- Also known as media converters, they are used to convert electrical signals to optical signals (and vice versa) for fiber transmission.
- Common in WAN scenarios where long-distance high-speed transmission over fiber is required.

Incorrect Options:

- A. Hubs: Obsolete Layer 1 devices used in LANs, not suitable for WANs.
- D. Network Interface Cards (NICs): Used in end devices for LAN connectivity.
- E. Wireless Access Points: Typically used in WLANs within local premises, not WAN infrastructure. This aligns with Cisco's WAN architecture fundamentals as highlighted in FLDTEC under Cisco Equipment and Related Hardware.

#### NEW QUESTION 52

Which step must be performed immediately after disconnecting the network cable when replacing an SFP transceiver module?

- A. Observe the port status LED.
- B. Disconnect the SFP latch.
- C. Reinstall dust plugs in the optical bores.
- D. Install the replacement SFP module.

**Answer:** C

#### NEW QUESTION 55

DRAG DROP

Drag and drop the characteristics from the left onto the corresponding categories of MDS switch on the right.

- scalable and expandable design
- suitable for small deployments
- enterprise-class performance
- high port densities
- fixed number of ports
- ideal for Edge SAN deployments

**Director-Class**

[Empty box]

[Empty box]

[Empty box]

**Fabric Switches**

[Empty box]

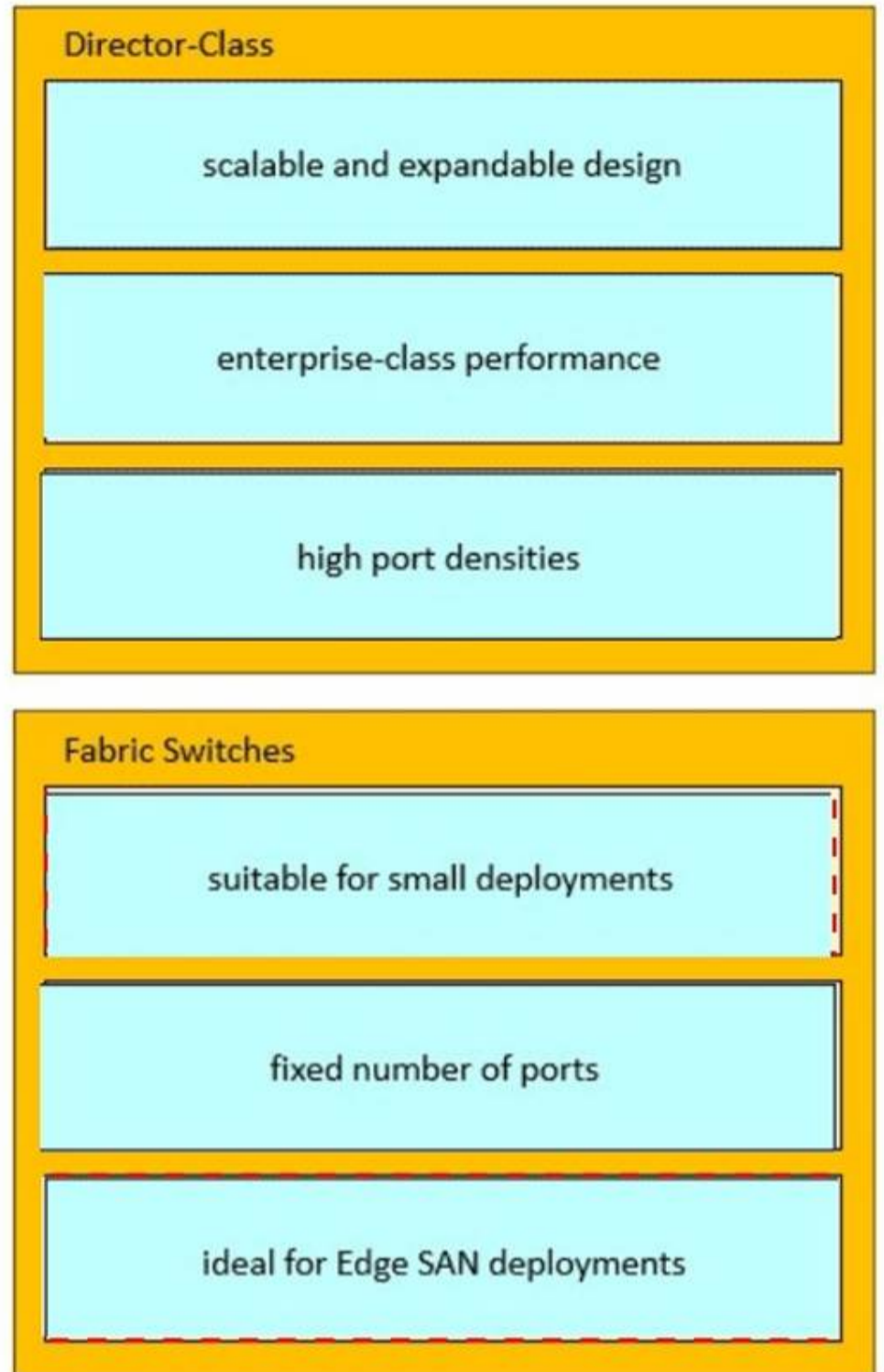
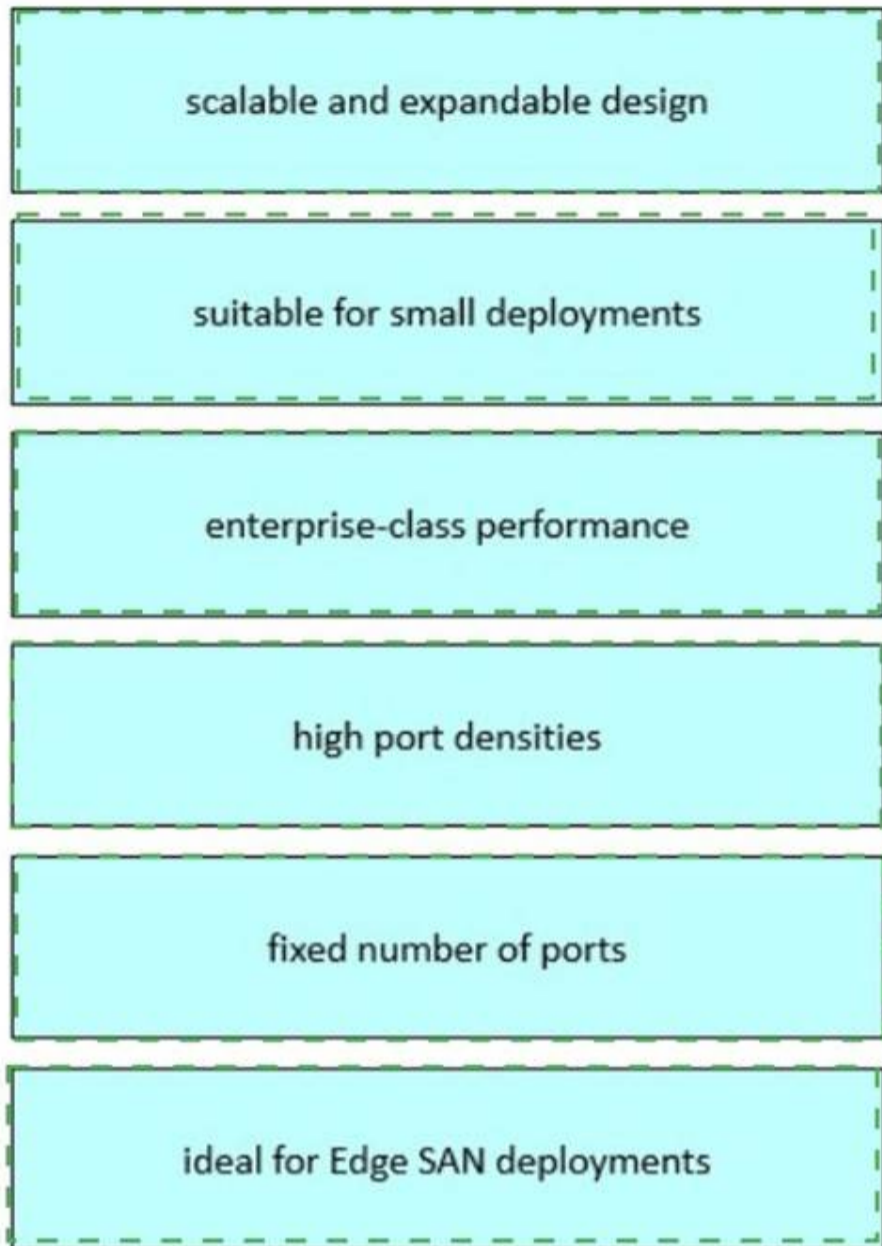
[Empty box]

[Empty box]

- A. Mastered
- B. Not Mastered

Answer: A

Explanation:



**NEW QUESTION 57**

Which two configuration parameters are most critical to ensure optimal performance when configuring a network port for a newly installed IP phone in an enterprise environment? (Choose two.)

- A. VLAN assignment
- B. Link aggregation
- C. Spanning Tree Protocol
- D. Power over Ethernet
- E. QoS classification

**Answer:** AD

**NEW QUESTION 62**

What is the primary advantage of the Cisco Intersight cloud-based approach compared to traditional on-premises management tools?

- A. It requires less local storage
- B. It offers better integration with non-Cisco products
- C. It allows management from anywhere without on-premises software
- D. It provides faster hardware upgrades

**Answer:** C

**NEW QUESTION 65**

Which term describes the physical range of radio frequency coverage provided by an access point in a wireless topology?

- A. Service Set Identifier (SSID)
- B. Basic Service Area (BSA)
- C. Wireless LAN (WLAN)
- D. Wireless LAN Controller (WLC)

**Answer:** B

#### NEW QUESTION 70

Which two actions are typically performed in ROMMON mode during the password recovery process? (Choose two.)

- A. Change the configuration register.
- B. Load the startup configuration.
- C. Save the configuration.
- D. Modify passwords.
- E. Reboot the device.

**Answer:** AE

#### NEW QUESTION 75

Which two features are managed by the hardware and software of the collaboration infrastructure? (Choose two.)

- A. Network bandwidth allocation
- B. Hosting large-scale databases
- C. Facilitating connections
- D. Phone book administration
- E. Supporting meeting experiences

**Answer:** CE

#### Explanation:

The Cisco Collaboration Infrastructure is designed to support unified communications, video conferencing, and team collaboration through an integrated architecture involving both hardware (e.g., endpoints, media servers) and software (e.g., CUCM, Webex apps).

According to the FLDTEC course content under Cisco Collaboration Equipment and Infrastructure: Facilitating Connections (C):

Cisco infrastructure components such as CUCM, Expressway, and Cisco Meeting Server enable real-time connections between users across voice, video, and messaging systems.

Supporting Meeting Experiences (E):

Devices such as Webex Boards, Room Kits, and Cisco Quad Cameras, in combination with platforms like Webex, provide immersive and seamless meeting experiences, supported by the infrastructure.

Incorrect Options:

- \* A. Network bandwidth allocation: Typically managed by network QoS policies and WAN optimizations, not the collaboration infrastructure directly.
- \* B. Hosting large-scale databases: Not a function of Cisco's collaboration system — this falls under data center or database server roles.
- \* D. Phone book administration: Often a function within directory services or external LDAP integration, not a core collaboration infrastructure task.

#### NEW QUESTION 78

DRAG DROP

Drag and drop the actions that must be taken after installing an E-Series server from the left into order on the right.

MISSING

- A. Mastered
- B. Not Mastered

**Answer:** A

#### Explanation:

In the FLDTEC course, under Maintenance and RMA Procedures, Cisco outlines a specific sequence for bringing up an E-Series server module in an ISR router. The sequence ensures proper recognition, IOS compatibility, and network readiness:

Power up the router and server: Ensures both components are initialized and POST begins.

Verify that the router recognized the server: Use service-module commands or show platform to confirm server visibility.

Load a compatible Cisco IOS image onto the ISR: The IOS must support the E-Series module to provide integration and configuration functionality.

Connect the server to the network: Establish network connectivity for services, remote access, or deployment.

This structured approach is essential for minimizing errors during modular hardware upgrades or RMAs in the field.

#### NEW QUESTION 83

Which mode must the console terminal of the device be in before a prewritten configuration is pasted to transfer the configuration from an old device to a new one?

- A. Interface configuration mode
- B. Global configuration mode
- C. Privileged EXEC mode
- D. User EXEC mode

**Answer:** B

#### NEW QUESTION 88

Why is a Cisco Nexus switch typically deployed in a network?

- A. In branch offices for local area networking
- B. In data centers for high-performance, low latency switching
- C. As wireless access points in enterprise campuses
- D. As edge routers connecting to ISPs

**Answer:** B

**Explanation:**

Cisco Nexus switches are specifically designed for deployment in data centers, where they provide high-performance, low-latency switching to support modern workloads, virtualization, and cloud computing environments.

Nexus switches operate using NX-OS, a purpose-built operating system optimized for data center needs. These switches support technologies like virtual port channels (vPC), FabricPath, and Application Centric Infrastructure (ACI), which are essential for scalable and highly available data center networks.

They are not typically used in branch offices, as wireless access points, or as edge routers.

Reference: Supporting Cisco Devices for Field Technicians (FLDTEC) – Cisco Equipment and Related Hardware

**NEW QUESTION 90**

Refer to the exhibit.



Which component is highlighted on the Cisco I/O module image?

- A. captive screw
- B. chassis connections LED
- C. fan module LED
- D. fixed port

**Answer: B**

**NEW QUESTION 95**

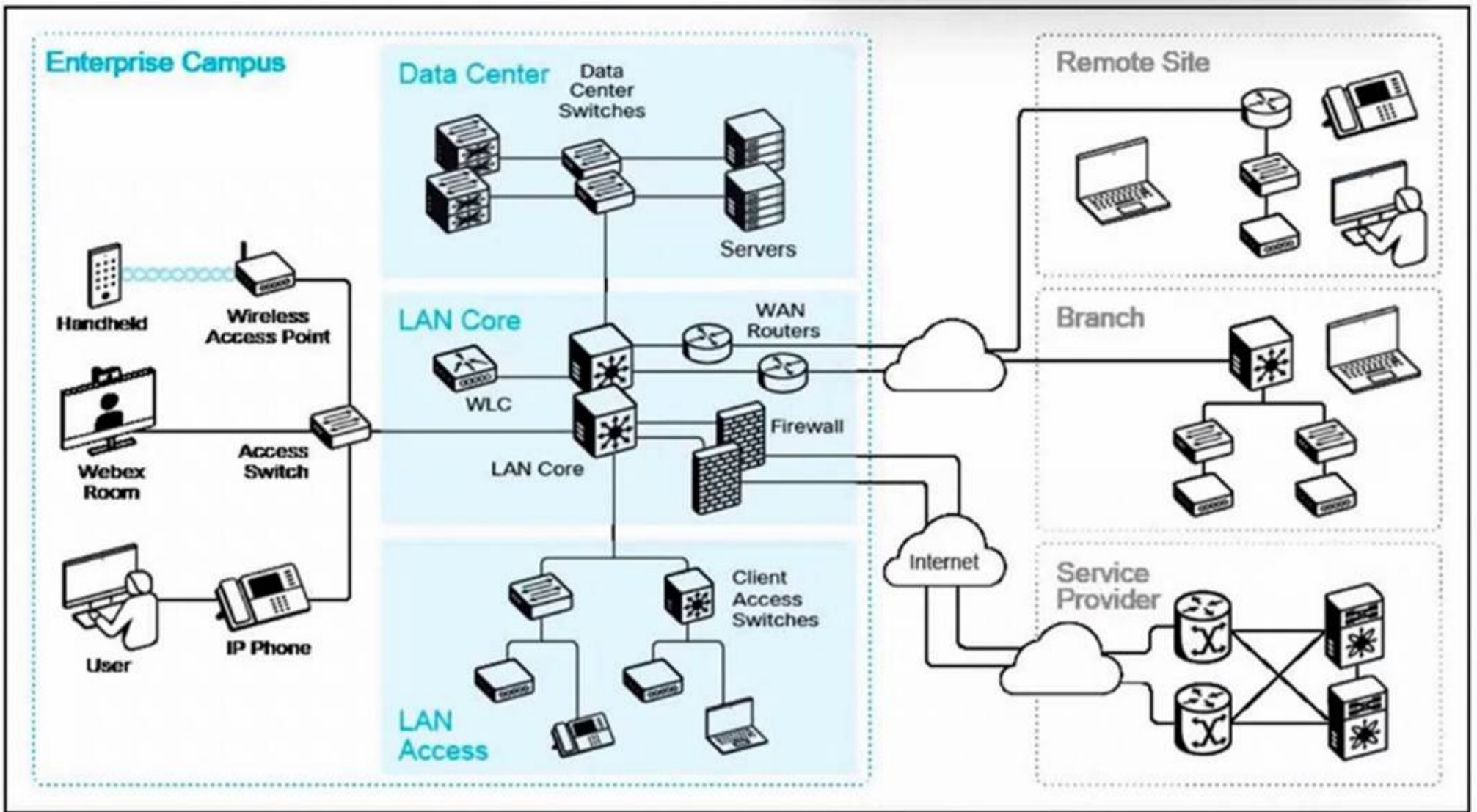
Which command is used to specify the source for the Cisco IOS software image to load during the boot process?

- A. boot image
- B. boot system
- C. boot ios
- D. boot source

**Answer: B**

**NEW QUESTION 97**

Refer to the exhibit.



What are two ways remote sites or branches connect to the enterprise campus network? (Choose two.)

- A. Access layer switches
- B. WAN links
- C. IPsec VPN tunnels
- D. Ad hoc Wi-Fi network
- E. LAN core switches

**Answer: BC**

**NEW QUESTION 100**

Which two cloud computing services are vendor-managed in an Infrastructure as a Service (IaaS) delivery model? (Choose two.)

- A. Applications
- B. Networking
- C. Storage
- D. Data
- E. Operating System

**Answer: BC**

**NEW QUESTION 105**

Which action must be taken when editing a captured configuration of an old device for reuse in a replacement device?

- A. Remove all configurations under line vty 0 4.
- B. Retain all username entries.
- C. Keep all access-list commands intact.
- D. Add the enable password cisco command.

**Answer: B**

**NEW QUESTION 110**

.....

## **Thank You for Trying Our Product**

### **We offer two products:**

1st - We have Practice Tests Software with Actual Exam Questions

2nd - Questions and Answers in PDF Format

### **800-150 Practice Exam Features:**

- \* 800-150 Questions and Answers Updated Frequently
- \* 800-150 Practice Questions Verified by Expert Senior Certified Staff
- \* 800-150 Most Realistic Questions that Guarantee you a Pass on Your First Try
- \* 800-150 Practice Test Questions in Multiple Choice Formats and Updates for 1 Year

**100% Actual & Verified — Instant Download, Please Click**  
**[Order The 800-150 Practice Test Here](#)**