

1Z0-516 Dumps

Oracle EBS R12.1 General Ledger Essentials

<https://www.certleader.com/1Z0-516-dumps.html>



NEW QUESTION 1

ABC Corporation is headquartered in New Dehli with an office in Mumbai. They share the same chart of accounts, calendar, and currency. The Mumbai ledger contains manual adjustments and automated adjustments. The New Dehli office does not need a complete ledger to perform management or statutory reporting.

Which four statements are true in the given scenario? (Choose four.)

- A. The Mumbai ledger is an adjustment-only secondary ledger.
- B. Perform all adjustments in the Mumbai ledger.
- C. Perform all day-to-day transactions in the New Dehli ledger.
- D. Use ledger sets to combine transaction data and adjustment data.
- E. Perform all day-to-day transactions and adjustments in the New Dehli ledger.
- F. Consolidate data in the Mumbai ledger with the New Dehli ledger while reporting.

Answer: ABCD

NEW QUESTION 2

You are implementing Oracle E-Business Suite Release 12 General Ledger for ABC Corporation. Identify two setups required for journal approval. (Choose two.)

- A. Enable journal approval for the Journal Category window.
- B. Disable the Journal: Find Approver Method profile option.
- C. Enable the Journal: Allow Preparer Approval profile option.
- D. Configure the GL journal approval process in Oracle Workflow Builder.

Answer: CD

NEW QUESTION 3

Identify two features of an "Independent" value set. (Choose two.)

- A. There is a predefined list of values for a segment.
- B. The values are stored in a product applications table.
- C. The values are stored in an Oracle Application Object Library table.
- D. You can enter a value other than those in the predefined list of values.

Answer: AC

NEW QUESTION 4

Given the following code:

```
var = "25";
if (isnumber(var)){
    _____
} else {
    results = "NaN";
}
return results;
```

Which statement will return the value for results as 25.0 when it is put in place of the blank line shown above the "}" statement?

- A. results = stringtofloat (var);
- B. results = stringtointeger (var);
- C. results = atoi (var);
- D. results = atof (var);

Answer: B

NEW QUESTION 5

Identify three features of Key Flexfields. (Choose three.)

- A. Key Flexfields are used as identifiers for entities.
- B. The Key Flexfield structure comprises Segments.
- C. A Key Flexfield structure consists of multiple code combinations.
- D. Key Flexfields appear as a single-space field enclosed in brackets.
- E. Each segment of a Key Flexfield usually contains meaningful information.

Answer: ABE

NEW QUESTION 6

The commerce step "Pending" has four participant profiles in the following order: SalesRep, SalesManager, Owner, and Admin.

The Admin profile allows access with the FullAccess user type. The Owner profile has at performer steps "start" step selected. The step has an auto-forwarding rule.

A FullAccess user with the SalesGroupA and SalesManagerA groups creates a new quote and saves it, which moves the quote to "Pending".

The auto-forwarding rule returned the following two lines: SalesManagerA~Company~SalesManager SalesGroupA~Company~SalesRep

Which profile will be used to display the quote in the "Pending" step to this user?

- A. SalesManager profile
- B. SalesRep profile

- C. Admin profile
- D. Owner profile

Answer: B

NEW QUESTION 7

Identify three ways in which subledgers transfer information to General Ledger. (Choose three.)

- A. balances
- B. batch transfer
- C. detail journals
- D. line-level records
- E. summary journals

Answer: BCE

NEW QUESTION 8

You are the manufacturing lead for XYZ's implementation of Oracle E-Business Suite Release 12. Your client has these requirements:

- Create a production plan.
- Analyze Sales Order information.
- Calculate capacity load ratio by resource or production line.
- Analyze resources, materials, costs, and job schedule progress.

Identify the two flows you would implement to accomplish these requirements. (Choose two.)

- A. Click to Order
- B. Order to Cash
- C. Procure to Pay
- D. Forecast to Plan
- E. Demand to Build

Answer: DE

NEW QUESTION 9

You set the GL: Journal Review Required profile option to "Yes." Identify the result.

- A. requires all journals to be reviewed before posting
- B. requires review of recurring journals before posting
- C. requires review of a journal entered in GL by the approver before posting
- D. requires generated AutoAllocation journals to be reviewed before posting

Answer: D

NEW QUESTION 10

Given the following code:

```
strArr1 = string[] {"1", "2", "3"};  
strArr2 = _____;  
return strArr2;
```

Which one of the following statements, when placed in the blank space, will give strArr2 a value of "123"?

- A. join(strArr1, "")
- B. combine(strArr1, "")
- C. join(strArr1, " ")
- D. combine("", strArr1)

Answer: C

NEW QUESTION 10

Identify three types of activities that are captured in Administration logs. (Choose three.)

- A. creation of configuration objects
- B. modification of Commerce process objects
- C. deployment of configuration product families
- D. creation of data tables
- E. migrations with the site as target
- F. uploading of files in File Manager

Answer: BCE

NEW QUESTION 14

Which format will `datetostr(getdate())` return when no format is supplied?

- A. DD/mm/yyyy HH:mm:ss
- B. HH:mm:ss MM/dd/yyyy
- C. HH:mm:ss DD/mm/yyyy
- D. MM/dd/yyyy HH:mm:ss

Answer: D

NEW QUESTION 15

XYZ Company is implementing Oracle at its headquarters in the US. It has operations in Australia, the UK, and China. The Australian and the US operations can share the same chart of accounts segments, and the UK and China operations can share the same chart of accounts segments. All operations share the same calendar or period-type combination, but not the currency. Each country requires that a separate accounting data be maintained. Identify the number of legal entities to be created and the number of accounting setups.

- A. Create one legal entity and four accounting setups.
- B. Create four legal entities and one accounting setup.
- C. Create two legal entities and four accounting setups.
- D. Create four legal entities and four accounting setups.

Answer: D

NEW QUESTION 20

XYZ Corp. has operations in the U.S. and Canada. Within Canada, it has two separate Divisions due to Statutory requirements: one in Quebec and another in Ontario.

How would you define the organization structure for XYZ Corp. from the information given above?

- A. two Ledgers, two Legal Entities, and two Operating Units
- B. two Ledgers, two Legal Entities, and three Operating Units
- C. two Ledgers, three Legal Entities, and two Operating Units
- D. two Ledgers, three Legal Entities, and three Operating Units
- E. three Ledgers, three Legal Entities, and three Operating Units

Answer: D

NEW QUESTION 24

The Related Parts data table exists in the QA environment and in the production environment. The table has 3,000 records in the QA environment and 4,000 records in the production environment.

How many records will be present in the data table in the production environment if this table is migrated from the QA environment?

- A. 1,000
- B. 7,000
- C. 4,000
- D. 3,000

Answer: C

NEW QUESTION 27

When creating a connection for a CPQ SOAP Endpoint in ICS, which format is expected?

- A. <https://<siteURL>>
- B. <https://<siteURL>/ics/catalog>
- C. https://<siteURL>/v2_0/receiver/commerce/oraclecpqo?WSDL
- D. <https://<siteURL>/v1/receiver?WSDL>

Answer: C

NEW QUESTION 28

You are implementing Oracle General Ledger at ABC Enterprises. ABC Enterprises is a legal entity and must perform corporate and statutory reporting. It operates in a country that requires companies to have two complete ledgers: one for statutory reporting and another for corporate reporting.

Identify the best option for primary and secondary ledgers.

- A. Use the primary ledger to satisfy corporate reporting requirements, and then use a secondary ledger to satisfy statutory reporting requirements.
- B. Use the primary ledger to satisfy statutory reporting requirements, and then use a secondary ledger to satisfy corporate reporting requirements.
- C. Use the primary ledger to satisfy corporate reporting requirements, and then use an adjustment-only secondary ledger to satisfy statutory reporting requirements.
- D. Use the primary ledger to satisfy statutory reporting requirements, and then use an adjustment-only secondary ledger to satisfy corporate reporting requirements.

Answer: A

NEW QUESTION 29

In the Multi-Org model, which organization type is the highest level that impacts accounting?

- A. Ledger
- B. Operating Unit
- C. Business Group
- D. GRE/Legal Entity
- E. Inventory Organization

Answer: A

NEW QUESTION 33

The client's GL accountant comes to you with a problem. A journal cannot be posted because it has not been approved. The preparer cannot submit the journal for approval because the Approve button is disabled in the Enter Journals form and the supervisor has not received a notification requesting the approval. What could be the possible cause for this problem?

- A. The profile option GL: Allow Preparer Approval must be reset.
- B. One of the GL account code combinations in the journal is invalid.
- C. Authorization limits have not been defined properly and the GL period is closed.
- D. Budgetary control has been enabled for the set of books and funds have not been reserved for the journal.

Answer: D

NEW QUESTION 37

ABC Enterprise has operations in the US and its headquarters in the UK. They share the same chart of accounts, accounting calendar, accounting method, and ledger-processing options.

UK management requires reporting on receivables from its US operations in GBP each month. Identify the best option for the US operations to report to their parent.

- A. Create an account-level reporting currency.
- B. Create a subledger-level reporting currency.
- C. Create a journal-level reporting currency for every transaction.
- D. Create a balance-level reporting currency and run general ledger translation.

Answer: B

NEW QUESTION 39

Your customer wants to create a user that has complete access to the site and has the ability to add and edit new users.

Which procedure should you follow to accomplish this?

- A. Click the Add button on the User Administration List page; enter values for the required fields (Login, Email, and First Name); set the Type field to FullAccess; click the Add button to add the user to the system; click the new user's name on the User Administration List page to edit the user, select the Create/Modify Users check box; and click the Update button to save the changes.
- B. Click the Add button on the User Administration List page, set the Type field to Admin, click the Add button to add the user to the system, click the new user's name on the User Administration List page to edit the user, select the Create/Modify Users check box, and click the Update button to save the changes.
- C. Click the Add button on the User Administration List page; enter values for the required fields (Login, Email, and First Name); set the Type field to FullAccess; select the Create/Modify Users check box, and click the Add button to add the user to the system.
- D. Click the Add button on the User Administration List page; enter values for the required fields (Login, Email, and First Name); click the Add button to add the user to the system; click the new user's name on the User Administration List page to edit the user; select the Create/Modify Users check box; and click the Update button to save the changes.
- E. Click the Add button on the User Administration List page; enter values for the required fields (Login, Password, Email, First Name, Last Name, and Phone Number); set the Type field to Admin; click the Add button to add the user to the system; click the new user's name on the User Administration List page to edit the user; select the Add New Users check box; and click the Add button to save the changes.

Answer: C

NEW QUESTION 42

Jack is hired as an Oracle General Ledger Implementation consultant for XYZ Corporation. Select two options that are necessary to enable journal approval. (Choose two.)

- A. key flexfields
- B. Journal Sources form
- C. Journal Categories form
- D. Journal Encumbrance Types form
- E. Journal approval on the Ledger Setup page

Answer: BE

NEW QUESTION 43

In the context of adding, deleting, and disabling secondary ledgers, select two valid statements. (Choose two.)

- A. The subledger accounting method must be assigned if defining a balance- or journal-level subledger.
- B. The subledger accounting method must be assigned only to the secondary ledger in case of defining a subledger journals-level secondary ledger.
- C. The subledger accounting method must not be assigned if defining an adjustments-only secondary ledger for manual adjustments in General Ledger.
- D. The subledger accounting method need not be assigned to the primary ledger for assigning a subledger accounting method to the adjustments-only secondary ledger.
- E. The subledger accounting method must be assigned to both primary and secondary ledgers to use the adjustments-only secondary ledger for both manual and automated adjustments from subledger accounting.

Answer: CE

NEW QUESTION 48

Identify three features of a Balancing Entity. (Choose three.)

- A. Balance sheets are prepared for a Balancing Entity.
- B. A Legal Entity may comprise one or more than one balancing segments.
- C. Multiple Balancing Entities within the same Operating Unit structure is not supported.
- D. A Balancing Entity is represented as a balancing segment value in the accounting flexfield structure.
- E. Oracle E-Business Suite Release 12 automatically secures balancing segment values within your chart of accounts with specific Legal Entities or Operating Units.

Answer: ABD

NEW QUESTION 50

In the Multi-Org model of Oracle E-Business Suite Release 12, which organization type owns Bank Account?

- A. Ledger
- B. Legal Entity
- C. Operating Unit
- D. Balancing Entity
- E. Business Group

Answer: B

NEW QUESTION 53

Choose three required steps while performing the accounting setup in the Accounting Setup Manager. (Choose three.)

- A. Define operating units.
- B. Update accounting options.
- C. Complete the accounting setup.
- D. Define intercompany balancing rules.
- E. Create the accounting setup structure.
- F. Assign balancing segment values to legal entities.

Answer: BCE

NEW QUESTION 57

Identify four types of attributes that can be set by formulas. (Choose four.)

- A. Currency Attributes
- B. Boolean Attributes
- C. Text Attributes
- D. Date Attributes
- E. Single Select Menu Attributes
- F. Integer Attributes

Answer: ABDF

NEW QUESTION 61

When defining a new user, which Type value can grant a user account complete access to the CPQ Cloud site?

- A. AdminAccess with Create/Modify Users selected
- B. Root with Create/Modify Users selected
- C. Administration with Create/Modify Users selected
- D. FullAccess with Create/Modify Users selected
- E. Superuser with Create/Modify Users selected

Answer: A

NEW QUESTION 62

Identify four consolidation tools. (Choose four.)

- A. Interface Data Transformer
- B. Global Consolidation System
- C. Global Intercompany System
- D. Financial Statement Generator
- E. Applications Desktop Integrator

Answer: ABDE

NEW QUESTION 65

Which is the correct procedure for adding multiple files to File Manager in a single step?

- A. Click File Manager on the Admin home page, select the folder where you want to store the new files, click the Browse button next to "Browse for ZIP File:", identify the zip file to upload, and click the Add File button.
- B. Click File Manager on the Admin home page, select the folder where you want to store the new files, click the Browse button next to "Browse for ZIP File:", and click the Add/Update File button.
- C. Click File Manager on the Admin home page, select the folder where you want to store the new files, click the Browse button next to "Browse for ZIP File:", identify the zip file to upload, and click the Add File button.
- D. Click File Manager on the Admin home page, click the Browse button next to "Browse for ZIP File", identify the zip file to upload, and click the Add/Update Files button.
- E. Click File Manager on the Admin home page, select the folder where you want to store the new files, click the Browse button next to "Browse for ZIP File:", identify the zip file to upload, and click the Add/Update Files button.

Answer: E

NEW QUESTION 70

Jack, the CFO of ABC Company, wants to prepare the annual capital expenditure budget for the current year where the company plans to grow in the last quarter of the year.

The capital expenditure budget is subdivided in multiple items, and the corporate calendar used at ABC Company has thirteen periods.

Identify the three budget rules that Jack must use to minimize the effort. (Choose three.)

- A. Use the divide evenly rule with the 4/4/4 spread.
- B. Use the divide evenly rule with the 4/5/4 spread.
- C. Use the divide evenly rule with the 5/4/4 spread.
- D. Use the divide evenly rule with the 4/4/5 spread.

Answer: BCD

NEW QUESTION 72

A client wants customers to be able to select a laptop category from a drop-down list in the Product Configuration section. After the laptop category is selected, all laptops within that category need to be displayed without the user having to do any more selections.

Which option meets this requirement?

- A. Formula Administration
- B. Util library function
- C. Commerce library function
- D. Auto Update

Answer: B

NEW QUESTION 74

In which two locations are the keywords for mobile processing of quotes defined when setting up approvals? (Choose two.)

- A. Mobile Approval Email Notification
- B. Submit sub-action - Reject
- C. Submit sub-action - Approve
- D. Submit sub-action – Submit for Approval

Answer: BC

NEW QUESTION 75

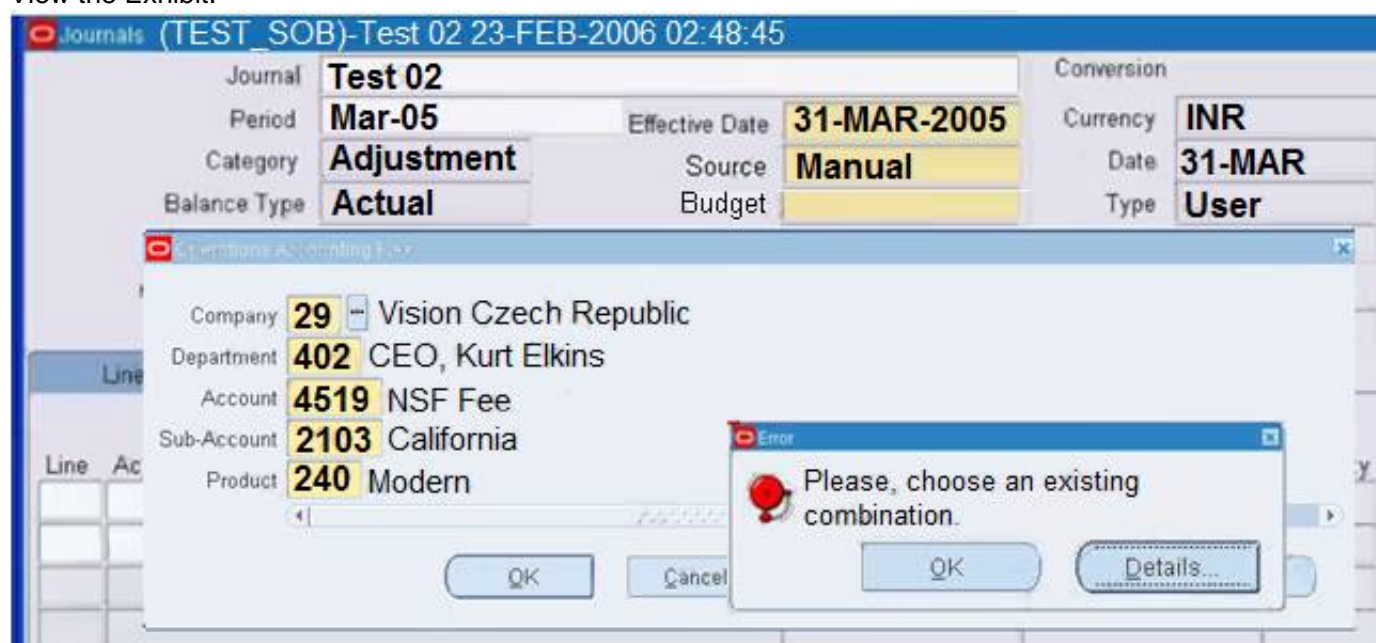
Which four attributes are validated during the Journal Import process? (Choose four.)

- A. period
- B. approval level
- C. balanced journal
- D. cross-validation rule
- E. account combination
- F. journal sequence number

Answer: ACDE

NEW QUESTION 79

View the Exhibit.



While entering a journal in the Journals form, you enter a code combination of 29.402.4519.2103.240 in the five-segment Accounting Flexfield. However, you are unable to proceed after entering this account combination.

What could be the problem in the structure definition of the Accounting Flexfield?

- A. The "Freeze Rollup Groups" check box is selected.
- B. The "Allow Dynamic Inserts" check box is deselected.
- C. The "Freeze Flexfield Definition" check box is selected.
- D. The "Cross-Validate Segments" check box is selected.

Answer: B

NEW QUESTION 83

Identify the three data types available for part custom fields. (Choose three.)

- A. "String," can be changed to "Single Select Menu"
- B. "Boolean"
- C. "Float," can be changed to "Integer"
- D. "Date," can include time
- E. "Currency"
- F. "Multi Select Menu"

Answer: ACE

NEW QUESTION 85

Identify the two values that the Reporting Level parameter can have when using cross organization reports with the Multi-Org Access Control feature. (Choose two.)

- A. Ledger
- B. Legal Entity
- C. Operating Unit
- D. Security Profile
- E. Business Group

Answer: AC

NEW QUESTION 86

ABC Corp. runs the Create Journals program, after which the Create Journal Entries Execution report is automatically created. Identify three components on which the Create Journal Entries Execution report reports. (Choose three.)

- A. Budget Journals
- B. Posted Journals report
- C. Payables encumbrance entries
- D. Purchasing encumbrance entries

Answer: ACD

NEW QUESTION 91

ABC Inc. added a new Operating Unit to its existing Multi-Org Access-enabled responsibility. When users logged in using their existing responsibility, they could not see the new Operating Unit in the list of values. What could be the cause?

- A. Security List Maintenance was not run.
- B. The Set MO: Operating Unit profile was not defined.
- C. The Set Multi-Org Preferences profile was not defined.
- D. The Set MO: Default Operating Unit profile was not defined.
- E. The Set MO: Security profile was not defined for the responsibility.

Answer: A

NEW QUESTION 92

A Ledger is a financial reporting entity. What is new in Oracle E-Business Suite Release 12 that facilitates generation of accounting entries?

- A. Ledger
- B. Chart of Accounts
- C. Multi-Org Structure
- D. Accounting Convention
- E. Financial Accounting Calendar

Answer: D

NEW QUESTION 95

Which three activities would use summary accounts? (Choose three.)

- A. creating a monthly recurring standard journal entry to amortize goodwill
- B. allocating the total monthly costs of the Information Services department to other departments
- C. estimating a sales commission accrual based on the total of all product sales for each division
- D. formulating a budget for employee benefits in each company based on the total of all budgeted employee salaries

Answer: BCD

NEW QUESTION 99

ABC Corporation has set up the Accounting Key Flexfield. It has also set up a Descriptive Flexfield to store vehicle information associated with the asset category "Vehicle". Identify three correct statements. (Choose three.)

- A. The Descriptive Flexfield is called an "intelligent key structure."
- B. The Descriptive Flexfield for the asset category "Vehicle" captures only additional information.
- C. The Descriptive Flexfield for the asset category "Vehicle" appears as a normal field on a form.
- D. The combination of values in the Accounting Flexfield identifies a particular business entity or class of entities.

E. You can define cross-validation rules to control the allowable combinations of segment values for the Accounting Flexfield.

Answer: BDE

NEW QUESTION 101

For each subledger, there must be one _____.

- A. journal type
- B. account type
- C. journal source
- D. journal category

Answer: C

NEW QUESTION 106

Select two statements that are true about Test Script found in a function debugger. (Choose two.)

- A. Test Script describes the various functions used in BML
- B. Test Script is template of how the BML function should be written
- C. Test Script provides a way to test a BML Library function when array type attributes are input parameters
- D. Test Scripts can be used to compute multiple iterations of the library functions and print each

Answer: AC

NEW QUESTION 107

You are the Human Resources lead for the ERP Implementation of ABC Corporation. You have defined the employees in Oracle Human Resources. Select three activities that utilize the employee record. (Choose three.)

- A. Approvals
- B. Asset assignment
- C. Organization creation
- D. Journal Entry creation
- E. AutoCreate Purchase Orders

Answer: ABE

NEW QUESTION 109

A manager wants to review the cash balance by company. He has asked you to create the summary account template. The company's accounting flexfield has four segments:

Company (5 values)
Cost Centers (30 values)
Region (4 values)
Account (180 values)

The total number of cash accounts is five that are associated with two parents: Three accounts are associated with the parent called "Checking."

Two accounts are identified with the parent called "Savings."

To combine the cash parents, you created a rollup group named "Cash."

How many accounts would the summary account template generate?

- A. 10
- B. 40
- C. 60
- D. 240
- E. 1200

Answer: A

NEW QUESTION 112

Identify three values that you can find in the Usage Metrics Report for the last month. (Choose three.)

- A. The number of transactions for different Commerce processes created by internal users and partner organization users
- B. The number of logins by internal users in the last 30 days and the percentage of active users logged in
- C. The total data size of the CPQ site occupied on the server
- D. A list of active partner organization users with the most recent login date and time and the number of logins
- E. The total number of partner organizations and the number of active partner organizations
- F. The number of configurations completed for different product families by internal users and partner organization users

Answer: ABC

NEW QUESTION 117

A customer attempts to set up Subscription Ordering on their site using the steps outlined in the ABO Implementation Guide. The site has been previously set up with BOM Mapping for a specific model. Upon testing the Subscription Ordering functionality for this model, they notice that no values are populated in the Action Code Transaction Line level attribute when adding line items to their Transaction.

Which statement is true?

- A. They specified an incorrect site URL in the abo_initializeContext BML Util Library function (Admin > BML Library)
- B. They selected an incorrect function for the "BML Util Function" selection under BOM settings (Admin> BOM > Declare Util Function)
- C. They provided incorrect BOM Mapping values for the model in the BOM Item Definition and BOM Item Mapping tables (Admin > Data Tables)

- D. They added an incorrect reverse mapping entry for the model in the Oracle_aboPart2Model table (Admin > Data Tables)
- E. They failed to incorporate conditionals to handle action code statuses in the formula for the Price (List) Transaction attribute (Admin > Process Definition > Formulas)

Answer: C

NEW QUESTION 119

Jane, the GL accountant, asks you whether she could delete the budget after it has been defined. She also wants to know whether she could delete the budget organization after it has been defined. What would be your response?

- A. You can delete the budget and the budget organization after they have been defined.
- B. You cannot delete the budget or the budget organization after either has been defined.
- C. You cannot delete a budget after it has been define
- D. However, you can delete a budget organization.
- E. You cannot delete a budget organization after it has been define
- F. However, you can delete a budget.

Answer: C

NEW QUESTION 122

Which two statements are true about Formulas? (Choose two.)

- A. Both attributes and library functions can be used as inputs for Formula Management
- B. Only attributes can be used as inputs for Formula Management
- C. Formulas cannot be run in sequence to perform multi-step calculations
- D. Formulas can set both transaction- and line-level attributes

Answer: CD

NEW QUESTION 123

What is the effect of summary accounts on the efficiency of the posting process?

- A. Use summary accounts in the posting process to accumulate values.
- B. Use summary accounts in the posting process to not accumulate values.
- C. Use of summary accounts increases the efficiency of the posting process.
- D. Use of summary accounts decreases the efficiency of the posting process.

Answer: D

NEW QUESTION 127

Identify two options to which transactions can be forwarded using forwarding rules. (Choose two.)

- A. any of the users who are part of the Approval group
- B. any email address registered in the CPQ Cloud system
- C. users
- D. user groups

Answer: CD

NEW QUESTION 131

When designing an integration with an ERP system, you must communicate with a third party integration tool (such as a middleware or a hub). Which three methods can be used to communicate with a middleware in this scenario? (Choose three.)

- A. Automated FTP
- B. DataCube Reporting
- C. urldata function call in a Commerce Advanced Modification BML function
- D. Commerce Integration Cloud Service Integration on an Action
- E. Formula Management
- F. Send XML on a Transition Rule via Real Time Integration
- G. Commerce Integration XSLs on an Action

Answer: CDF

NEW QUESTION 133

Scott is implementing Oracle General Ledger for ABC Corporation. He needs help as he creates the accounting setup. Which two are true for the creation of the accounting setup? (Choose two.)

- A. Assigning legal entities to accounting setups is compulsory.
- B. After the subledger accounting method is assigned, it cannot be changed.
- C. Before completing the accounting setup, secondary ledgers and currency can be deleted.
- D. A calendar cannot be assigned if it contains gaps between periods or it does not have a full fiscal year defined.

Answer: CD

NEW QUESTION 138

Identify the different types of data that can be processed using the GL Interface. (Choose three.)

- A. rates
- B. budget
- C. vendors
- D. statistical
- E. intercompany
- F. currency codes

Answer: BDE

NEW QUESTION 141

Identify the two benefits of using Multi-Org Access Control. (Choose two.)

- A. View asset information across multiple asset books.
- B. Restrict access to users based on their Organization assignments.
- C. Submit and view data across different Ledgers using a single responsibility.
- D. Enter Payables invoices for different Operating Units using a single responsibility.
- E. View Consolidated requisitions across Operating Units using a single responsibility.

Answer: DE

NEW QUESTION 144

What two options do you have when searching for multiple parts on the Parts Administration page? (Choose two.)

- A. Use “*” and/or “?” as wildcards
- B. Type the start string of a part numbe
- C. The search will return all parts starting with this text
- D. Use “_” and/or “%” as wildcards
- E. Use regular expressions (RegEx) to describe a search pattern
- F. You can leave the field empty, which will return all parts

Answer: BD

NEW QUESTION 146

Which two parameters facilitate cross organization reports in a Multi-Org environment? (Choose two.)

- A. Ledger
- B. Legal Entity
- C. Operating Unit
- D. Reporting Level
- E. Reporting Context

Answer: DE

NEW QUESTION 150

Identify three types of data written to different log files that you can find in the Error Logs menu. (Choose three.)

- A. email sending and receiving
- B. administration changes
- C. output of print servers
- D. modsecurity messages
- E. performance information
- F. server messages

Answer: BDF

NEW QUESTION 152

Isa Global Inc. is based in the United States with divisions in Europe and Asia. All journal imports, recurring journals, mass allocations, and manual journal entries have been posted for their European subsidiary.

What is the next logical step in the period-close process?

- A. opening the next period
- B. closing the current period
- C. revaluing foreign currency balances
- D. translating to the functional currency
- E. consolidating to the parent set of books

Answer: C

NEW QUESTION 157

ABC Systems is headquartered in Toronto with a branch in New Delhi. The Toronto office uses a weekly calendar, whereas the New Delhi office uses a monthly calendar. The GL journals of New Delhi must be reflected in Toronto's books.

What conversion method would you use?

- A. Use journal-level secondary ledger conversion.
- B. Use subledger-level secondary ledger conversion.

- C. Use adjustment-level secondary ledger conversion.
- D. Use both subledger-level and adjustment-level secondary ledger conversion.

Answer: A

NEW QUESTION 161

A customer sets up a BOM mapping for a Configuration model using a single simple Table-Based BOM Mapping Configuration rule, as well as the BOM Item Definition and BOM Item Mapping Tables. When reviewing their implementation, they notice the following:

➤ The BOM Root Items Administration List shows the root BOM item and its child BOM items correctly.

No errors are displayed. (Accessed from Admin > Products > BOM > BOM Root Items List)

➤ The BOM Mapping Administration List shows no root BOM item or child BOM items. No errors are displayed. (Accessed from the BOM Mapping rule's "Save and View Details" button)

Which field have they incorrectly populated in their BOM Mapping Tables?

- A. "Configurable Attribute Variable Name" in the BOM Item Mapping Table
- B. "Parent BOM Map Variable Name" in the BOM Item Mapping Table
- C. "Root Variable Name" in the BOM Item Definition Table
- D. "Parent Variable Name" in the BOM Item Definition Table
- E. "Part Number" in the BOM Item Definition Table
- F. "BOM Item Variable Name" in the BOM Item Mapping Table

Answer: D

NEW QUESTION 166

ABC Corp. has determined its Accounting Key Flexfield structure for the implementation of Oracle

E-Business Suite Release 12. The Accounting Key Flexfield structure contains five Segments: Company, Business Unit, Department, Account, and Product.

They have the following requirements:

(1) The Department values should be based on the Business Units.

(2) They want to produce a quarterly Balance Sheet for each Company. Which three statements are true? (Choose three.)

- A. The Product Value Set is dependent on the Accounts.
- B. The Business Unit Value Set is defined as Independent.
- C. The Account Segment has a Value Set with no Validation.
- D. The Company Segment is qualified as the Balancing Segment.
- E. The Department Segment is qualified as an Intercompany Segment.
- F. Cross-validation rules are required to enforce dependency of Departments on the Business Units.

Answer: BDF

NEW QUESTION 168

ABC Inc. wants to have 16 accounting periods that include an adjusting period for each quarter in its 4-5-4 accounting calendar. Its fiscal year-end is March 31.

The normal month-end is on a Friday, but the last day of each quarter is always on the last day of the quarter's final calendar month.

Select the remaining setup for the calendar to meet the requirement.

- A. defining 12-monthly periods based on the 4-5-4 calendar ending on the last day of each month; defining an adjusting period on the last day of each quarter
- B. defining 12-monthly periods based on the 4-5-4 calendar ending on the last Friday of each month; defining four adjusting periods for March 31 of the fiscal year
- C. defining 12-monthly periods based on the 4-5-4 calendar ending on the last Friday of each month; defining an adjusting period on the last Friday of each quarter
- D. defining 12-monthly periods based on the 4-5-4 calendar ending on the last Friday of each month, except for the last month of each quarter ending on the last day of the month; defining an adjusting period for each of the last day of the quarter

Answer: D

NEW QUESTION 170

.....

Thank You for Trying Our Product

* 100% Pass or Money Back

All our products come with a 90-day Money Back Guarantee.

* One year free update

You can enjoy free update one year. 24x7 online support.

* Trusted by Millions

We currently serve more than 30,000,000 customers.

* Shop Securely

All transactions are protected by VeriSign!

100% Pass Your 1Z0-516 Exam with Our Prep Materials Via below:

<https://www.certleader.com/1Z0-516-dumps.html>