

## Exam Questions AZ-400

Microsoft Azure DevOps Solutions (beta)

<https://www.2passeasy.com/dumps/AZ-400/>



NEW QUESTION 1

DRAG DROP - (Topic 4)

You have an Azure DevOps pipeline that is used to deploy a Node.js app. You need to ensure that the dependencies are cached between builds.

How should you configure the deployment YAML? To answer, drag the appropriate values to the correct targets. Each value may be used once, more than once, or not at all. You may need to drag the split bar between panes or scroll to view content.

NOTE Each correct selection is worth one point.

Values

always()

build.sh

eq(variables.CACHE\_RESTORED, 'true')

integrationtest.sh

ne(variables.CACHE\_RESTORED, 'true')

npm install

Answer Area

inputs:

key: 'npm | "\$(Agent.OS)" | package-lock.json'

restoreKeys: |

npm | "\$(Agent.OS)"

path: \$(npm\_config\_cache)

cacheHitVar: CACHE\_RESTORED

- script: 

Value

condition: 

Value

- A. Mastered
- B. Not Mastered

Answer: A

Explanation:

Values

always()

build.sh

eq(variables.CACHE\_RESTORED, 'true')

integrationtest.sh

ne(variables.CACHE\_RESTORED, 'true')

npm install

Answer Area

inputs:

key: 'npm | "\$(Agent.OS)" | package-lock.json'

restoreKeys: |

npm | "\$(Agent.OS)"

path: \$(npm\_config\_cache)

cacheHitVar: CACHE\_RESTORED

- script: 

npm install

condition: 

ne(variables.CACHE\_RESTORED, 'true')

NEW QUESTION 2

- (Topic 4)

You have a multi-tier application. The front end of the application is hosted in Azure App Service. You need to identify the average load times of the application pages. What should you use?

- A. Azure Application Insights
- B. the activity log of the App Service
- C. the diagnostics logs of the App Service
- D. Azure Advisor

Answer: A

Explanation:

Application Insights will tell you about any performance issues and exceptions, and help you find and diagnose the root causes. Application Insights can monitor both Java and ASP.NET web applications and services, WCF services. They can be hosted on-premises, on virtual machines, or as Microsoft Azure websites. On the client side, Application Insights can take telemetry from web pages and a wide variety of devices including iOS, Android, and Windows Store apps. Reference: <https://docs.microsoft.com/en-us/azure/azure-monitor/app/web-monitor-performance>

NEW QUESTION 3

HOTSPOT - (Topic 4)

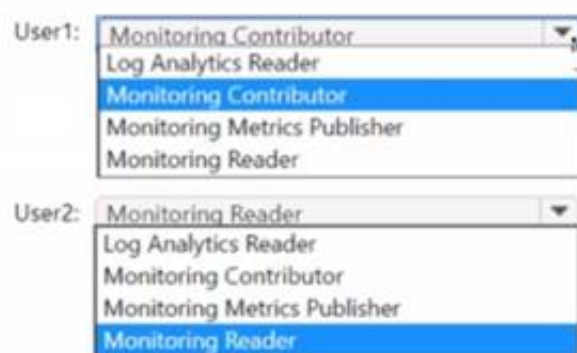
You have a project in Azure DevOps that includes two users named User1 and User2. You plan to use Azure Monitor to manage logs. You need to ensure that the users can perform the actions shown in following the table.

| User  | Action  |
|-------|---|
| User1 | <ul style="list-style-type: none"><li>Create private monitoring dashboards.</li><li>Search usage data for an Azure Monitor workspace.</li></ul> |
| User2 | <ul style="list-style-type: none"><li>View autoscale settings.</li><li>View alert activities and settings.</li></ul>                            |

The solution must follow the principle of least privilege.

Which role should you assign to each user? To answer select the appropriate options in the answer area.  
 NOTE: Each correct selection is worth one point.

Answer Area



User1: Monitoring Contributor  
 Log Analytics Reader  
 Monitoring Contributor  
 Monitoring Metrics Publisher  
 Monitoring Reader

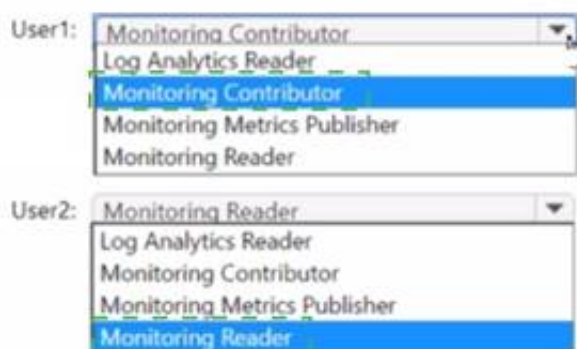
User2: Monitoring Reader  
 Log Analytics Reader  
 Monitoring Contributor  
 Monitoring Metrics Publisher  
 Monitoring Reader

- A. Mastered
- B. Not Mastered

Answer: A

Explanation:

Answer Area



User1: Monitoring Contributor  
 Log Analytics Reader  
 Monitoring Contributor  
 Monitoring Metrics Publisher  
 Monitoring Reader

User2: Monitoring Reader  
 Log Analytics Reader  
 Monitoring Contributor  
 Monitoring Metrics Publisher  
 Monitoring Reader

#### NEW QUESTION 4

- (Topic 4)

Your company has a hybrid cloud between Azure and Azure Stack.

The company uses Azure DevOps for its CI/CD pipelines. Some applications are built by using Erlang and Hack.

You need to ensure that Erlang and Hack are supported as part of the build strategy across the hybrid cloud. The solution must minimize management overhead.

What should you use to execute the build pipeline?

- A. AzureDevOps self-hosted agents on Azure DevTest Labs virtual machines.
- B. AzureDevOps self-hosted agents on virtual machine that run on Azure Stack
- C. AzureDevOps self-hosted agents on Hyper-V virtual machines
- D. a Microsoft-hosted agent

Answer: B

Explanation:

Azure Stack offers virtual machines (VMs) as one type of an on-demand, scalable computing resource. You can choose a VM when you need more control over the computing environment.

References: <https://docs.microsoft.com/en-us/azure/azure-stack/user/azure-stack-compute-overview>

#### NEW QUESTION 5

- (Topic 4)

You have an Azure subscription that contains an Azure pipeline named Pipeline1 and a GitHub repository named Repo1, Repo1 contains Bicep modules.

Pipeline1 deploys Azure resources by using the Bicep modules.

You need to ensure that all releases comply with Azure Policy before they are deployed to production.

What should you do?

- A. Configure a deployment gate for Pipeline' include the Azure DevOps Security and compliance assessment task.
- B. Create an Azure DevOps build runs on the creation of a pull request assesses the code for compliance.
- C. To Pipeline1, add a step that runs a What If deployment before the deployment step.
- D. Configure a deployment gate for Pipeline' that uses Azure Automation to run a What If deployment

Answer: A

#### NEW QUESTION 6

- (Topic 4)

You have an Azure subscription that contains an Azure Active Directory (Azure AD) tenant. You are configuring a build pipeline in Azure Pipelines that will include a task named

Task1. Task1 will authenticate by using an Azure AD service principal.

Which three values should you configure for Task1? Each correct answer presents part of the solution.

NOTE: Each correct selection is worth one point.

- A. the object ID
- B. the tenant ID

- C. the app ID
- D. the client secret
- E. the subscription ID

**Answer:** BCD

**Explanation:**

Reference:

<https://docs.microsoft.com/en-us/azure/devops/pipelines/library/connect-to-azure>

**NEW QUESTION 7**

- (Topic 4)

You are developing an iOS application by using Azure DevOps.

You need to test the application manually on 10 devices without releasing the application to the public.

Which two actions should you perform? Each correct answer presents part of the solution.

NOTE: Each correct selection is worth one point.

- A. Create a Microsoft Intune device compliance policy.
- B. Deploy a certificate from an internal certification authority (CA) to each device.
- C. Register the application in the iTunes store.
- D. Onboard the devices into Microsoft Intune.
- E. Distribute a new release of the application.
- F. Register the IDs of the devices in the Apple Developer portal.

**Answer:** EF

**Explanation:**

References: <https://help.apple.com/xcode/mac/current/#/dev7ccaf4d3c>

**NEW QUESTION 8**

- (Topic 4)

Note: This question is part of a series of questions that present the same scenario. Each question in the series contains a unique solution that might meet the stated goals. Some question sets might have more than one correct solution, while others might not have a correct solution.

After you answer a question in this section, you will NOT be able to return to it. As a result, these questions will not appear in the review screen.

Your company uses Azure DevOps to manage the build and release processes for applications.

You use a Git repository for applications source control.

You need to implement a pull request strategy that reduces the history volume in the master branch.

Solution: You implement a pull request strategy that uses a three-way merge. Does this meet the goal?

- A. Yes
- B. No

**Answer:** B

**Explanation:**

Instead use fast-forward merge.

Note:

No fast-forward merge - This option merges the commit history of the source branch when the pull request closes and creates a merge commit in the target branch.

Reference:

<https://docs.microsoft.com/en-us/azure/devops/repos/git/branch-policies>

**NEW QUESTION 9**

HOTSPOT - (Topic 4)

Your company uses Team Foundation Server 2013 (TFS 2013). You plan to migrate to Azure DevOps.

You need to recommend a migration strategy that meets the following requirements:

? Preserves the dates of Team Foundation Version Control changesets

? Preserves the changes dates of work items revisions

? Minimizes migration effort

? Migrates all TFS artifacts

What should you recommend? To answer, select the appropriate options in the answer area.

NOTE: Each correct selection is worth one point.

On the TFS server:

|   |
|---|
| <input type="checkbox"/> Install the TFS Java SDK.                              |
| <input type="checkbox"/> Upgrade TFS to the most recent RTW release.            |
| <input type="checkbox"/> Upgrade to the most recent version of PowerShell Core. |

To perform the migration:

|   |
|---|
| <input type="checkbox"/> Copy the assets manually.            |
| <input type="checkbox"/> Use public API-based tools.          |
| <input type="checkbox"/> Use the TFS Database Import Service. |
| <input type="checkbox"/> Use the TFS Integration Platform.    |



- A. Mastered
- B. Not Mastered

**Answer:** A

**Explanation:**

Box 1: Upgrade TFS to the most recent RTM release.

One of the major prerequisites for migrating your Team Foundation Server database is to get your database schema version as close as possible to what is currently deployed in Azure DevOps Services.

Box 2: Use the TFS Database Import Service

In Phase 3 of your migration project, you will work on upgrading your Team Foundation Server to one of the supported versions for the Database Import Service in Azure DevOps Services.

References: Team Foundation Server to Azure DevOps Services Migration Guide

**NEW QUESTION 10**

HOTSPOT - (Topic 4)

You are designing YAML-based Azure pipelines for the apps shown in the following table

| Name | Platform                               | Release requirements   |
|------|--|--|
| App1 | Azure virtual machine                  | Replace a fixed set of existing instances of the previous version of App1 with instances of the new version of the app in each iteration.          |
| App2 | Azure Kubernetes Service (AKS) cluster | Roll out a limited deployment of the new version of App2 to validate the functionality of the app. Once testing is successful, expand the rollout. |

You need to configure the YAML strategy value for each app. The solution must minimize app downtime. Which value should you configure for each app? To answer, select the appropriate options in the answer area.

App1:

App2:

- A. Mastered
- B. Not Mastered

**Answer:** A

**Explanation:**

App1 Canary and App2 rolling

App1 Canary would minimize app downtime for the first app, as it would only deploy new code when the canary has confirmed that it is functional - and if there are any issues, it would roll back to the previous version of the code.

App2 rolling would be the second option, as it would allow for frequent deployments of new code, while still giving the developers enough time to fix any issues that may have been introduced during new code deployments.

**NEW QUESTION 10**

HOTSPOT - (Topic 4)

You have an Azure DevOps project that contains a build pipeline. The build pipeline uses approximately 50 open source libraries.

You need to ensure that the project can be scanned for known security vulnerabilities in the open source libraries.

What should you do? To answer, select the appropriate options in the answer area. NOTE: Each correct selection is worth one point.

Object to create:

A build task  
A deployment task  
An artifacts repository

Service to use:

WhiteSource Bolt  
Bamboo  
CMake  
Chef

- A. Mastered
- B. Not Mastered

**Answer:** A

**Explanation:**

Box 1: A Build task Trigger a build

You have a Java code provisioned by the Azure DevOps demo generator. You will use WhiteSource Bolt extension to check the vulnerable components present in this code.

? Go to Builds section under Pipelines tab, select the build definition WhiteSourceBolt and click on Queue to trigger a build.

? To view the build in progress status, click on ellipsis and select View build results.

Box 2: WhiteSource Bolt

WhiteSource is the leader in continuous open source software security and compliance management. WhiteSource integrates into your build process, irrespective of your programming languages, build tools, or development environments. It works automatically, continuously, and silently in the background, checking the security, licensing, and quality of your open source components against WhiteSource constantly-updated denitive database of open source repositories.

References: <https://www.azuredevopslabs.com/labs/vstsextend/whitesource/>

**NEW QUESTION 14**

- (Topic 4)

You have multiple teams that work on multiple projects in Azure DevOps.

You need to plan and manage the consumers and producers for each project. The solution must provide an overview of all the projects.

What should you do?

- A. Install the Dependency Tracker extension and create dependencies for each project.
- B. Add a Parent or Child link to the feature or user story for the items of each project.
- C. Add a Predecessor or Successor link to the feature or user story for the items of each project.
- D. Create a custom query to show the consumers and producers and add a widget to a dashboard.

**Answer:** A

**NEW QUESTION 15**

- (Topic 4)

You use GitHub for source control.

A file that contains sensitive data is committed accidentally to the Get repository of a project.

You need to delete the file and its history form the repository.

Which two tools can you use? Each correct answer presents a complete solution. NOTE: Each correct selection is worth one point.

- A. the git filter-branch command
- B. BFG Repo-Cleaner
- C. the git rebase command
- D. GitHub Desktop

**Answer:** AB

**Explanation:**

To entirely remove unwanted files from a repository's history you can use either the git filter-branch command or the BFG Repo-Cleaner open source tool.

Reference:

<https://docs.github.com/en/github/authenticating-to-github/keeping-your-account-and-data-secure/removing-sensitive-data-from-a-repository>

**NEW QUESTION 17**

- (Topic 4)

You have an Azure DevOps organization named Contoso and an Azure subscription. The subscription contains an Azure virtual machine scale set named VMSS1 and an Azure Standard Load Balancer named LB1. LB1 distributes incoming requests across VMSS1 instances.

You use Azure DevOps to build a web app named Appl and deploy App1 to VMSS1. App1 is accessible via HTTPS only and configured to require mutual authentication by using a client certificate.

You need to recommend a solution for implementing a health check of App1. The solution must meet the following requirements:

- Identify whether individual instances of VMSS are eligible for an upgrade operation.
- Minimize administrative effort.

What should you include in the recommendation?

- A. the Custom Script Extension
- B. the Application Health extension
- C. Azure Monitor autoscale
- D. an Azure Load Balancer health probe

**Answer: B**

**Explanation:**

<https://docs.microsoft.com/en-us/azure/virtual-machine-scale-sets/virtual-machine-scale-sets-health-extension#when-to-use-the-application-health-extension>

#### NEW QUESTION 20

- (Topic 4)

You have a build pipeline in Azure Pipelines that uses different jobs to compile an application for 10 different architectures.

The build pipeline takes approximately one day to complete.

You need to reduce the time it takes to execute the build pipeline

Which two actions should you perform? Each correct answer presents part of the solution. NOTE: Each correct selection is worth one point

- A. Move to a blue/green deployment pattern.
- B. Create an agent pool.
- C. Create a deployment group.
- D. Reduce the size of the repository.
- E. Increase the number of parallel jobs.

**Answer: BE**

**Explanation:**

Question: I need more hosted build resources. What can I do? Answer: The Azure Pipelines pool provides all Azure DevOps organizations with cloud- hosted build agents and free build minutes each month. If you need more Microsoft-hosted build resources, or need to run more jobs in parallel, then you can either:

Host your own agents on infrastructure that you manage. Buy additional parallel jobs.

Reference:

<https://docs.microsoft.com/en-us/azure/devops/pipelines/agents/pools-queues>

#### NEW QUESTION 21

- (Topic 4)

Your company hosts a web application in Azure. The company uses Azure Pipelines for the build and release management of the application.

Stakeholders report that the past few releases have negatively affected system performance.

You configure alerts in Azure Monitor.

You need to ensure that new releases are only deployed to production if the releases meet defined performance baseline criteria in the staging environment first.

What should you use to prevent the deployment of releases that fail to meet the performance baseline?

- A. an Azure Scheduler job
- B. a trigger
- C. a gate
- D. an Azure function

**Answer: C**

**Explanation:**

Scenarios and use cases for gates include:

? Quality validation. Query metrics from tests on the build artifacts such as pass rate or code coverage and deploy only if they are within required thresholds.

Use Quality Gates to integrate monitoring into your pre-deployment or post-deployment. This ensures that you are meeting the key health/performance metrics (KPIs) as your applications move from dev to production and any differences in the infrastructure environment or scale is not negatively impacting your KPIs.

Note: Gates allow automatic collection of health signals from external services, and then promote the release when all the signals are successful at the same time or stop the deployment on timeout. Typically, gates are used in connection with incident management, problem management, change management, monitoring, and external approval systems.

References:

<https://docs.microsoft.com/en-us/azure/azure-monitor/continuous-monitoring>

<https://docs.microsoft.com/en-us/azure/devops/pipelines/release/approvals/gates?view=azure-devops>

#### NEW QUESTION 22

DRAG DROP - (Topic 4)

You are using the Dependency Tracker extension in a project in Azure DevOps. You generate a risk graph for the project.

What should you use in the risk graph to identify the number of dependencies and the risk level of the project? To answer, drag the appropriate elements to the correct data points. Each element may be used once, more than once, or not at all. You may need to drag the split bar between panes or scroll to view content.

NOTE: Each correct selection is worth one point.

**Elements**

Link color

Link length

Link width

Node color

**Answer Area**

Number of dependencies: 

Element

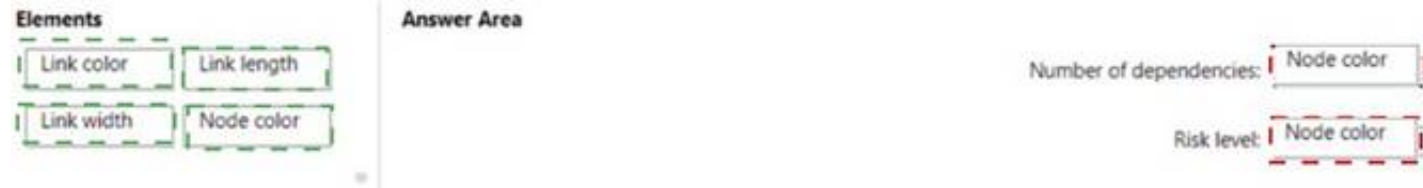
Risk level: 

Element

- A. Mastered
- B. Not Mastered

**Answer:** A

**Explanation:**



#### NEW QUESTION 25

- (Topic 4)

Your company uses Azure DevOps for the build pipelines and deployment pipelines of Java based projects. You need to recommend a strategy for managing technical debt.

Which two actions should you include in the recommendation? Each correct answer presents part of the solution

NOTE: Each correct selection is worth one point.

- A. Integrate Azure DevOps and SonarQube.
- B. Integrates Azure DevelOPs and Azure DevTest Labs.
- C. Configure post-deployment approvals in the deployment pipeline.
- D. Configure pre-deployment approvals in the deployment pipeline.

**Answer:** AC

#### NEW QUESTION 29

- (Topic 4)

Note: This question is part of a series of questions that present the same scenario. Each question in the series contains a unique solution that might meet the stated goals. Some question sets might have more than one correct solution, while others might not have a correct solution.

After you answer a question in this section, you will NOT be able to return to it. As a result, these questions will not appear in the review screen.

You manage a project in Azure DevOps.

You need to prevent the configuration of the project from changing over time. Solution: Perform a Subscription Health scan when packages are created. Does this meet the goal?

- A. Yes
- B. No

**Answer:** B

**Explanation:**

Instead implement Continuous Assurance for the project.

Note: The Subscription Security health check features in AzSK contains a set of scripts that examines a subscription and flags off security issues, misconfigurations or obsolete artifacts/settings which can put your subscription at higher risk.

Reference:

<https://azsk.azurewebsites.net/04-Continous-Assurance/Readme.html>

#### NEW QUESTION 31

- (Topic 4)

Note: This question is part of a series of questions that present the same scenario. Each question in the series contains a unique solution that might meet the stated goals. Some question sets might have more than one correct solution, while others might not have a correct solution.

After you answer a question in this section, you will NOT be able to return to it. As a result, these questions will not appear in the review screen.

The lead developer at your company reports that adding new application features takes longer than expected due to a large accumulated technical debt.

You need to recommend changes to reduce the accumulated technical debt.

Solution: You recommend increasing the code duplication. Does this meet the goal?

- A. Yes
- B. No

**Answer:** B

**Explanation:**

Instead reduce the code complexity. Reference:

<https://dzone.com/articles/fight-through-the-pain-how-to-deal-with-technical>

#### NEW QUESTION 35

SIMULATION - (Topic 4)

You need to ensure that an Azure web app named az400-9940427-main can retrieve secrets from an Azure key vault named az400-9940427-kv1 by using a system managed identity.

The solution must use the principle of least privilege.

To complete this task, sign in to the Microsoft Azure portal.

- A. Mastered
- B. Not Mastered

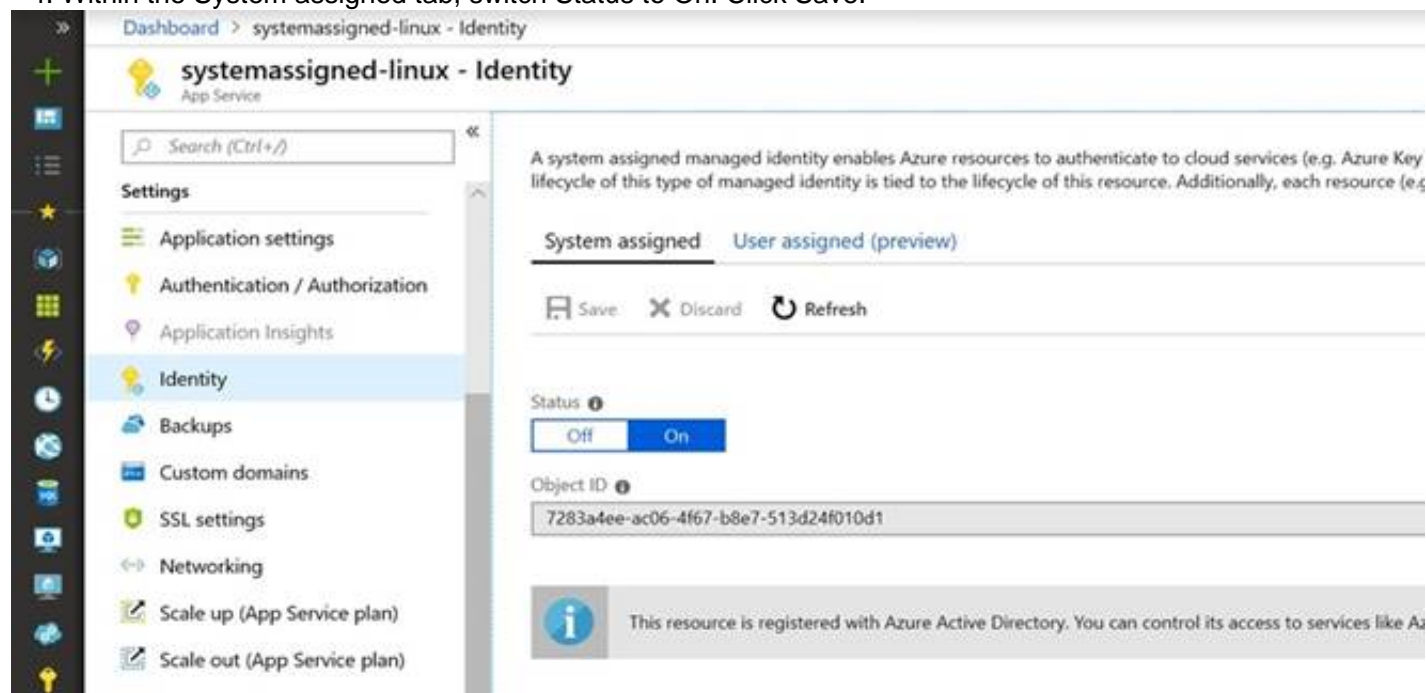
**Answer:** A

**Explanation:**

- \* 1. In Azure portal navigate to the az400-9940427-main app.
- \* 2. Scroll down to the Settings group in the left navigation.



- \* 3. Select Managed identity.
- \* 4. Within the System assigned tab, switch Status to On. Click Save.



References:  
<https://docs.microsoft.com/en-us/azure/app-service/overview-managed-identity>

### NEW QUESTION 39

- (Topic 4)

You plan to provision a self-hosted Linux agent

Which authentication mechanism should you use to register the self-hosted agent?

- A. SSH key
- B. personal access token (PAT)
- C. Alternate credentials
- D. certificate

**Answer: B**

#### Explanation:

Note: PAT Supported only on Azure Pipelines and TFS 2017 and newer. After you choose PAT, paste the PAT token you created into the command prompt window. Use a personal access token (PAT) if your Azure DevOps Server or TFS instance and the agent machine are not in a trusted domain. PAT authentication is handled by your Azure DevOps Server or TFS instance instead of the domain controller.

Reference:

<https://docs.microsoft.com/en-us/azure/devops/pipelines/agents/v2-linux>

<https://docs.microsoft.com/en-us/azure/devops/pipelines/agents/v2-linux?view=azure-devops>

### NEW QUESTION 41

- (Topic 4)

Note: This question is part of a series of questions that present the same scenario. Each question in the series contains a unique solution that might meet the stated goals. Some question sets might have more than one correct solution, while others might not have a correct solution.

After you answer a question in this section, you will NOT be able to return to it. As a result, these questions will not appear in the review screen.

You need to recommend an integration strategy for the build process of a Java application.

The solution must

meet the following requirements:

- ? The builds must access an on-premises dependency management system.
- ? The build outputs must be stored as Server artifacts in Azure DevOps.
- ? The source code must be stored in a Git repository in Azure DevOps.

Solution: Configure an Octopus Tentacle on an on-premises machine. Use the Package Application task in the build pipeline.

Does this meet the goal?

- A. Yes
- B. No

**Answer: A**

#### Explanation:

Octopus Deploy is an automated deployment server that makes it easy to automate deployment of ASP.NET web applications, Java applications, NodeJS application and custom scripts to multiple environments.

Octopus can be installed on various platforms including Windows, Mac and Linux. It can also be integrated with most version control tools including VSTS and GIT. When you deploy software to Windows servers, you need to install Tentacle, a lightweight agent service, on your Windows servers so they can communicate with the Octopus server.

When defining your deployment process, the most common step type will be a package step. This step deploys your packaged application onto one or more deployment targets.

When deploying a package you will need to select the machine role that the package will be deployed to.

References:

<https://octopus.com/docs/deployment-examples/package-deployments> <https://explore.emtecinc.com/blog/octopus-for-automated-deployment-in-devops-models>

### NEW QUESTION 44

SIMULATION - (Topic 4)

You plane to store signed images in an Azure Container Registry instance named az4009940427acr1.

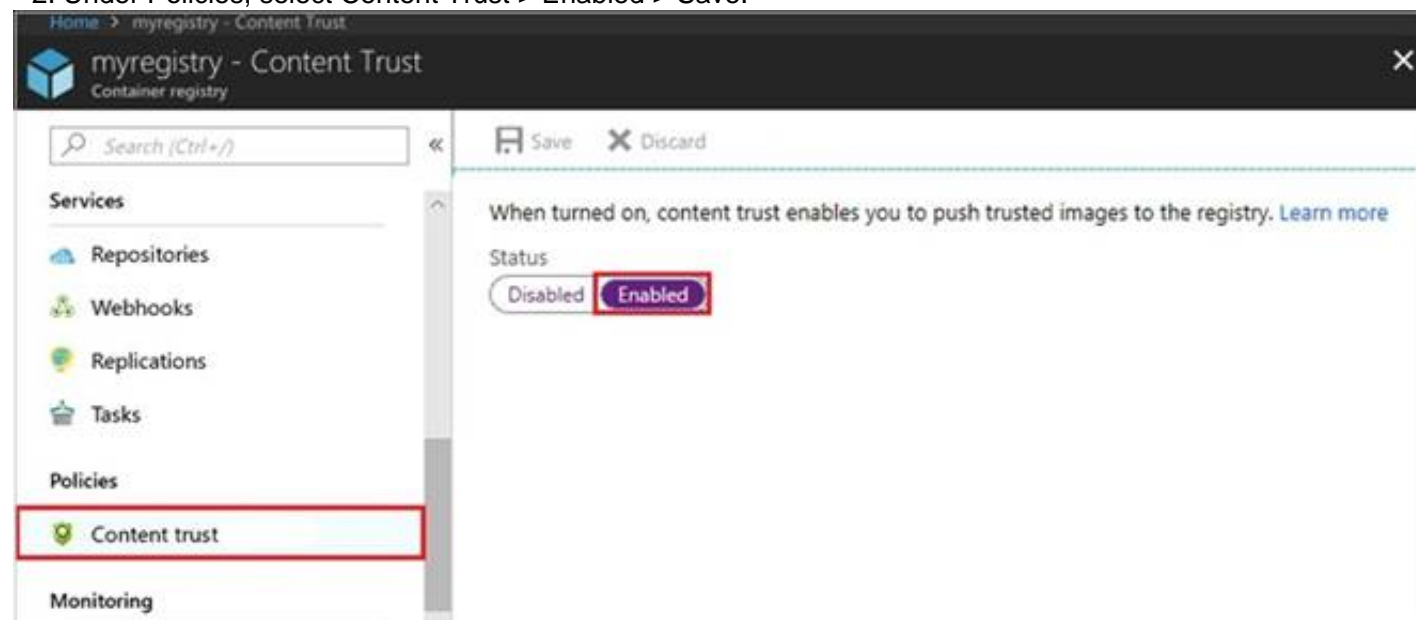
You need to modify the SKU for az4009940427acr1 to support the planned images. The solution must minimize costs. To complete this task, sign in to the Microsoft Azure portal.

- A. Mastered
- B. Not Mastered

**Answer:** A

**Explanation:**

- \* 1. Open Microsoft Azure Portal, and select the Azure Container Registry instance named az4009940427acr1.
- \* 2. Under Policies, select Content Trust > Enabled > Save.



References:

<https://docs.microsoft.com/en-us/azure/container-registry/container-registry-content-trust>

**NEW QUESTION 49**

DRAG DROP - (Topic 4)

You use Get for source control.

You delete a file, commit the changes, and continue to work. You need to recover the deleted file.

Which three commands should you run in sequence? To answer, move the appropriate commands from the list of commands to the answer area and arrange them in the correct order.

**Commands**

- git restore path/to/file
- git log
- git commit -m 'undeleated the file'
- git checkout [hash]-1 -- path/to/file
- git stash
- git tag

.....

**Answer Area**

- A. Mastered
- B. Not Mastered

**Answer:** A

**Explanation:**

**Commands**

- git restore path/to/file
- git log
- git commit -m 'undeleated the file'
- git checkout [hash]-1 -- path/to/file
- git stash
- git tag

.....

**Answer Area**

git log

git checkout [hash]-1 -- path/to/file

git restore path/to/file

**NEW QUESTION 51**

HOTSPOT - (Topic 4)

Your company uses a Git source-code repository.

You plan to implement GitFlow as a workflow strategy.

You need to identify which branch types are used for production code and preproduction code in the strategy.

Which branch type should you identify for each code type? To answer, select the appropriate options in the answer area.

NOTE: Each correct selection is worth one point.

**Answer Area**

Production code:

Preproduction code:

Master  
Feature  
Develop

Master  
Feature  
Develop

Passing Certification Exams Made Easy

visit - <https://www.2PassEasy.com>

- A. Mastered
- B. Not Mastered

**Answer:** A

**Explanation:**

Box 1: Master

The Master branch contains production code. All development code is merged into master in sometime.

Box 2: Develop

The Develop branch contains pre-production code. When the features are finished then they are merged into develop.

**NEW QUESTION 56**

- (Topic 4)

You have a pipeline named Pipeline1 in Azure Pipelines.

You need to create a service connection to enable Pipeline1 to download a public container image.

Which type of service connection should you create?

- A. a Docker host
- B. Azure Service Fabric
- C. Azure Kubernetes Service (AKS)
- D. a Docker registry

**Answer:** D

**NEW QUESTION 58**

- (Topic 4)

You have a project in Azure DevOps named Project that contains a Kanban board named Board1.

You create a Microsoft Teams channel and add the Azure Boards app to the channel. You need to ensure that users can create work items in Board1 from Microsoft Teams. Which command should you run?

- A. @azure boards sign in
- B. @azure boards link
- C. @azure boards create
- D. @azure boards subscriptions

**Answer:** B

**NEW QUESTION 61**

- (Topic 4)

You have a multi-tier application. The front end of the application is hosted in Azure App Service. You need to identify the average load times of the application pages. What should you use?

- A. the diagnostics logs of the App Service
- B. Azure Application Insights
- C. Azure Advisor
- D. the activity log of the App Service

**Answer:** B

**NEW QUESTION 63**

- (Topic 4)

You have the following Azure policy.

```
if: {
  allOf: [
    {
      "field": "type",
      "equals": "Microsoft.Storage/storageAccounts"
    },
    {
      "field": "Microsoft.Storage/storageAccounts/supportsHttpsTrafficOnly",
      "notEquals": "true"
    }
  ]
}
```

- A. ensures that at) data for new Azure Storage accounts is encrypted at rest
- B. prevents HTTPS traffic to new Azure Storage accounts when the accounts are accessed over the internet
- C. prevents all HTTP traffic to wasting Azure Storage accounts
- D. ensures that all traffic to new Azure Storage accounts is encrypted

**Answer:** A

**NEW QUESTION 68**

- (Topic 4)

Note: This question is part of a series of questions that present the same scenario. Each question in the series contains a unique solution that might meet the stated goals. Some question sets might have more than one correct solution, while others might not have a correct solution.

After you answer a question in this section, you will NOT be able to return to it. As a result, these questions will not appear in the review screen.

The lead developer at your company reports that adding new application features takes longer than expected due to a large accumulated technical debt.

You need to recommend changes to reduce the accumulated technical debt. Solution: You recommend reducing the code complexity.

Does this meet the goal?

- A. Yes
- B. No

**Answer:** A

**Explanation:**

Reference:

<https://dzone.com/articles/fight-through-the-pain-how-to-deal-with-technical>

**NEW QUESTION 71**

- (Topic 4)

Note: This question is part of a series of questions that present the same scenario. Each question in the series contains a unique solution that might meet the stated goals. Some question sets might have more than one correct solution, while others might not have a correct solution.

After you answer a question in this section, you will NOT be able to return to it. As a result, these questions will not appear in the review screen.

You have an approval process that contains a condition. The condition requires that releases be approved by a team leader before they are deployed.

You have a policy stating that approvals must occur within eight hours.

You discover that deployments only fail if the approvals take longer than two hours.

You need to ensure that the deployments only fail if the approvals take longer than hours. Solution: From Post-deployment conditions, you modify the Timeout setting for post-

deployment approvals. Does this meet the goal?

- A. Yes
- B. NO

**Answer:** B

**NEW QUESTION 73**

- (Topic 4)

You need to make a custom package available to all the developers. The package must be managed centrally, and the latest version must be available for consumption in Visual Studio automatically.

Which three actions should you perform? Each correct answer presents part of the solution.

NOTE: Each correct selection is worth one point.

- A. Add the package URL to the Environment settings in Visual Studio.
- B. Create a Get repository in Azure Repos.
- C. Add the package URL to the Get Package Manager settings in Visual Studio.
- D. Upload a package to a Get repository.
- E. Create a new feed in Azure Artifacts.
- F. Publish the package to a feed.

**Answer:** ABE

**NEW QUESTION 75**

- (Topic 4)

You manage projects by using Azure Boards.

You have a current work item named item A that is dependent on a work item named item3. You need to define the dependency for item A.

What should you do in the web portal for Azure DevOps?

- A. From Backlogs, open the context menu, select Add link and then select item3. Set Link type to Related and add the ID of item A.
- B. From item A, open the Links tab, and then select Add link.
- C. Set Link type to Successor and add the ID of item B.
- D. From Queries, open the context menu, select Add link, and then select Existing item.
- E. Set Link type to Affected By and add the ID of item B.
- F. From item A, open the Links tab, and then select Add link.
- G. Set Link type to References and add the ID of item B.

**Answer:** B

**NEW QUESTION 76**

- (Topic 4)

You need to recommend an integration strategy for the build process of a Java application. The solution must meet the following requirements:

- The builds must access an on-premises dependency management system.
- The build outputs must be stored as Server artifacts in Azure DevOps.
- The source code must be stored in a Git repository in Azure DevOps.

Solution: Configure the build pipeline to use a Microsoft-hosted agent pool running a Linux image. Include the Java Tool Installer task in the build pipeline.

Does this meet the goal?

- A. Yes
- B. No

**Answer:** B

**Explanation:**

To run your jobs, you'll need at least one agent. A Linux agent can build and deploy different kinds of apps, including Java and Android apps.

If your pipelines are in Azure Pipelines and a Microsoft-hosted agent meets your needs, you can skip setting up a private Linux agent.

The Azure Pipelines agent pool offers several virtual machine images to choose from, each including a broad range of tools and software. We support Ubuntu, Red Hat, and CentOS.

Reference:

<https://docs.microsoft.com/en-us/azure/devops/pipelines/agents/v2-linux?view=azure-devops>



<https://docs.microsoft.com/en-us/azure/devops/pipelines/agents/hosted?view=azure-devops&tabs=yaml>

### NEW QUESTION 81

DRAG DROP - (Topic 4)

You need to recommend a solution for deploying charts by using Helm and Tiller to Azure Kubernetes Service (AKS) in an RBAC-enabled cluster.

Which three commands should you recommend be run in sequence? To answer, move the appropriate commands from the list of commands to the answer area and arrange them in the correct order.

| Commands        | Answer Area |
|-----------------|-------------|
| helm install    |             |
| kubectl create  |             |
| helm completion |             |
| helm init       |             |
| helm serve      |             |

- A. Mastered
- B. Not Mastered

**Answer:** A

#### Explanation:

Step 1: Kubectl create

You can add a service account to Tiller using the --service-account <NAME> flag while you're configuring Helm (step 2 below). As a prerequisite, you'll have to create a role binding which specifies a role and a service account name that have been set up in advance.

Example: Service account with cluster-admin role

\$ kubectl create -f rbac-config.yaml serviceaccount "tiller" created clusterrolebinding "tiller" created

\$ helm init --service-account tiller

Step 2: helm init

To deploy a basic Tiller into an AKS cluster, use the helm init command.

Step 3: helm install

To install charts with Helm, use the helm install command and specify the name of the chart to install.

References:

<https://docs.microsoft.com/en-us/azure/aks/kubernetes-helm> [https://docs.helm.sh/using\\_helm/#tiller-namespaces-and-rbac](https://docs.helm.sh/using_helm/#tiller-namespaces-and-rbac)

### NEW QUESTION 83

- (Topic 4)

You plan to onboard 10 new developers.

You need to recommend a development environment that meets the following requirements:

- ? Integrates with GitHub
- ? Provides integrated debugging tools
- ? Supports remote workers and hot-desking environments
- ? Supports developers who use browsers, tablets, and Chromebooks

What should you recommend?

- A. VS Code
- B. Xamarin Studio
- C. Mono Develop
- D. Github/Visual Studio Code spaces

**Answer:** D

#### Explanation:

Visual Studio Code spaces is built to accommodate the widest variety of projects or tasks, including GitHub and integrating debugging.

Visual Studio Code spaces conceptually and technically extends the Visual Studio Code Remote Development extensions.

In addition to "backend" environments, Visual Studio Code spaces supports these "frontend" editors:

- ? Visual Studio Code
- ? Visual Studio Code-based editor in the browser

Reference:

<https://docs.microsoft.com/sv-se/visualstudio/codespaces/overview/what-is-vsonline>

### NEW QUESTION 87

HOTSPOT - (Topic 4)

You currently use JIRA, Jenkins, and Octopus as part of your DevOps processes. You plan to use Azure DevOps to replace these tools.

Which Azure DevOps service should you use to replace each tool? To answer, select the appropriate options in the answer area.

NOTE: Each correct selection is worth one point.

JIRA:

Jenkins:

Octopus:

- A. Mastered
- B. Not Mastered

Answer: A

Explanation:

JIRA- BoardJenkins- Build PipelinesOctopus- Release pipelines

NEW QUESTION 89

DRAG DROP - (Topic 4)

You are defining release strategies for two applications as shown in the following table.

| Application name | Goal  |
|------------------|---|
| App1             | Failure of App1 has a major impact on your company. You need a small group of users, who opted in to a testing App1, to test new releases of the application. |
| App2             | You need to minimize the time it takes to deploy new releases of App2, and you must be able to roll back as quickly as possible.                              |

Which release strategy should you use for each application? To answer, drag the appropriate release strategies to the correct applications. Each release strategy may be used once, more than once, or not at all. You may need to drag the split bar between panes or scroll to view content.

NOTE: Each correct selection is worth one point.

Release Strategies

Blue/Green deployment

Canary deployment

Rolling deployment

Answer Area:

App1:

App2:

- A. Mastered
- B. Not Mastered

Answer: A

Explanation:

App1: Canary deployment

With canary deployment, you deploy a new application code in a small part of the production infrastructure. Once the application is signed off for release, only a few users

are routed to it. This minimizes any impact.

With no errors reported, the new version can gradually roll out to the rest of the infrastructure.

App2: Rolling deployment:

In a rolling deployment, an application's new version gradually replaces the old one. The actual deployment happens over a period of time. During that time, new

and old versions will coexist without affecting functionality or user experience. This process makes it easier to roll back any new component incompatible with the old components.

#### NEW QUESTION 90

- (Topic 4)

You have an Azure virtual machine that is monitored by using Azure Monitor. The virtual machine has the Azure Log Analytics agent installed.

You plan to deploy the Service Map solution from Azure Marketplace.

What should you deploy to the virtual machine to support the Service Map solution?

- A. the Telegraf agent
- B. the Azure Monitor agent
- C. the Dependency agent
- D. the Windows Azure diagnostics extension (WAD)

**Answer:** C

#### NEW QUESTION 95

- (Topic 4)

Note: This question is part of a series of questions that present the same scenario. Each question in the series contains a unique solution that might meet the stated goals. Some question sets might have more than one correct solution, while others might not have a correct solution.

After you answer a question in this section, you will NOT be able to return to it. As a result, these questions will not appear in the review screen.

You plan to update the Azure DevOps strategy of your company.

You need to identify the following issues as they occur during the company's development process:

? Licensing violations

? Prohibited libraries

Solution: You implement continuous deployment. Does this meet the goal?

- A. Yes
- B. No

**Answer:** B

#### Explanation:

Instead implement continuous integration.

Note: WhiteSource is the leader in continuous open source software security and compliance management. WhiteSource integrates into your build process, irrespective of your programming languages, build tools, or development environments. It works automatically, continuously, and silently in the background, checking the security, licensing, and quality of your open source components against WhiteSource constantly-updated denitive database of open source repositories.

Reference: <https://azuredevopslabs.com/labs/vstsextend/whitesource/>

#### NEW QUESTION 99

- (Topic 4)

Note: This question is part of a series of questions that present the same scenario. Each question in the series contains a unique solution that might meet the stated goals. Some question sets might have more than one correct solution, while others might not have a correct solution.

After you answer a question in this section, you will NOT be able to return to it as a result, these questions will not appear in the review screen.

You have an Azure pipeline that is used to deploy a web app. The pipeline includes a test suite named TestSuite1. TestSuite1 is used to validate the operations of the web app.

TestSuite1 fails intermittently.

You identify that the failures are unrelated to changes in the source code and execution environment.

You need to minimize troubleshooting effort for the TestSuite1 failures. Solution: You enable Test Impact Analysis (TIA).

Does this meet the goal?

- A. Yes
- B. No

**Answer:** B

#### NEW QUESTION 103

DRAG DROP - (Topic 4)

You are creating a NuGet package.

You plan to distribute the package to your development team privately.

You need to share the package and test that the package can be consumed.

Which four actions should you perform in sequence? To answer, move the appropriate actions from the list of actions to the answer area and arrange them in the correct order.

## Actions

## Answer Area

Create a new Azure Artifacts feed.

Configure a self-hosted agent.

Publish a package.

Install a package.

Connect to an Azure Artifacts feed.



- A. Mastered
- B. Not Mastered

**Answer:** A

### Explanation:

Step 1: Configure a self-hosted agent.

The build will run on a Microsoft hosted agent.

Step 2: Create a new Azure Artifacts feed

Microsoft offers an official extension for publishing and managing your private NuGet feeds.

Step 3: Publish the package.

Publish, pack and push the built project to your NuGet feed.

Step 4: Connect to an Azure Artifacts feed.

With the package now available, you can point Visual Studio to the feed, and download the newly published package

References:

<https://medium.com/@dan.cokely/creating-nuget-packages-in-azure-devops-with-azure-pipelines-and-yaml-d6fa30f0f15e>

### NEW QUESTION 105

- (Topic 4)

You have an Azure DevOps project named Project1 and an Azure subscription named Sub1. Sub1 contains an Azure SQL database named DB1.

You need to create a release pipeline that uses the Azure SQL Database Deployment task to update DB1.

Which artifact should you deploy?

- A. a BACPAC
- B. a DACPAC
- C. an LDF file
- D. an MDF file

**Answer:** B

### Explanation:

Use Azure SQL Database Deployment task in a build or release pipeline to deploy to Azure SQL DB using a DACPAC or run scripts using SQLCMD.

Reference:

<https://docs.microsoft.com/en-us/azure/devops/pipelines/tasks/deploy/sql-azure-dacpac-deployment>

### NEW QUESTION 106

SIMULATION - (Topic 4)

You have several apps that use an Azure SQL Database named db1.

You need to ensure that queries to db1 are tuned by Azure over time. The solution must only apply to db1.

To complete this task, sign in to the Microsoft Azure portal.

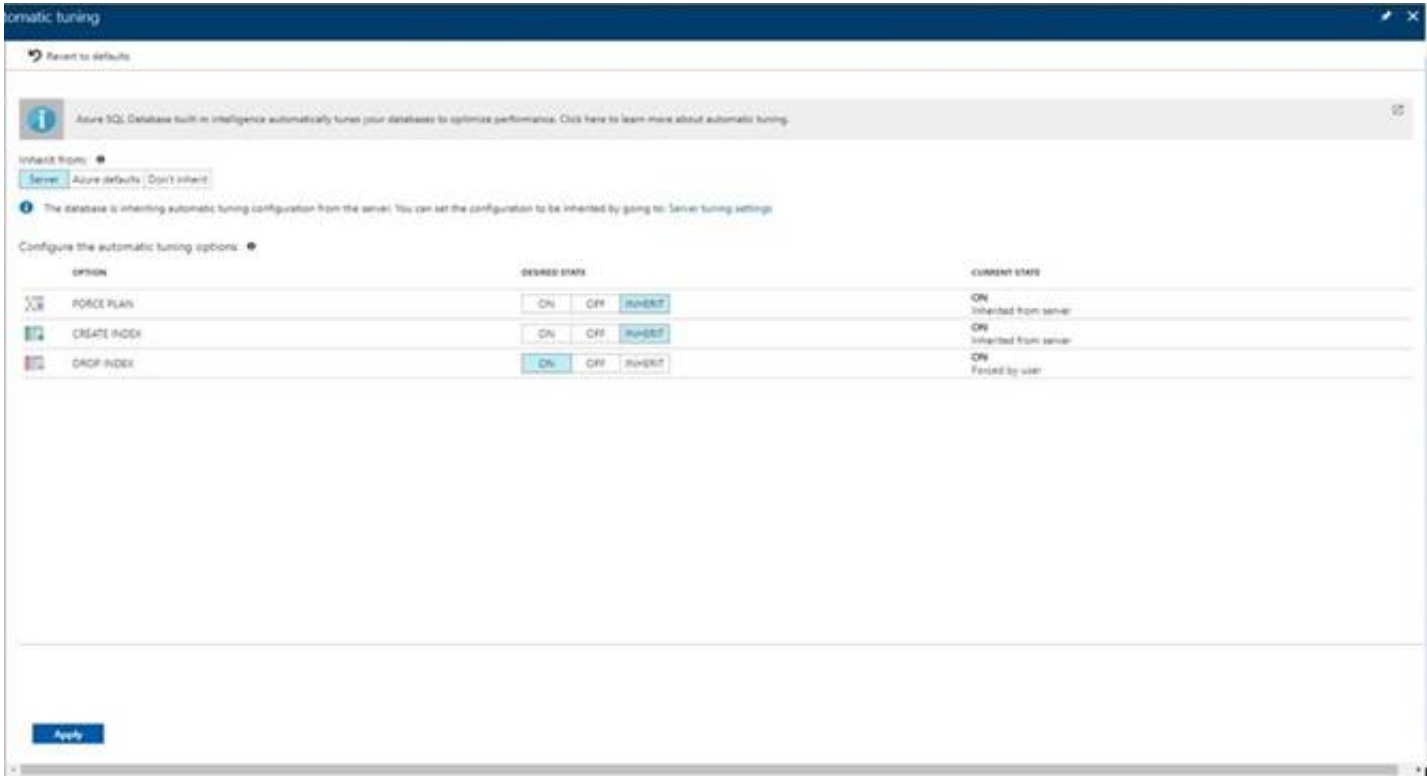
- A. Mastered
- B. Not Mastered

**Answer:** A

### Explanation:

\* 1. To enable automatic tuning on a single database, navigate to the database in the Azure portal and select Automatic tuning.





\* 2. Select the automatic tuning options you want to enable and select Apply.  
Note: Individual automatic tuning settings can be separately configured for each database. You can manually configure an individual automatic tuning option, or specify that an option inherits its settings from the server.

NEW QUESTION 107

DRAG DROP - (Topic 4)

You have a private project in Azure DevOps and two users named User1 and User2. You need to add User1 and User2 to groups to meet the following requirements:

- ? User1 must be able to create a code wiki.
- ? User2 must be able to edit wiki pages.
- ? The solution must use the principle of least privilege.

To which group should you add each user? To answer, drag the appropriate groups to the correct users. Each group may be used once, more than once, or not at all. You may need to drag the split bar between panes or scroll to view content.

NOTE: Each correct selection is worth one point.

Groups

Build Administrators

Contributors

Project Administrators

Project Valid Users

Stakeholders

Answer Area

User1:

User2:

- A. Mastered
- B. Not Mastered

Answer: A

Explanation:

User1: Project Administrators  
You must have the permission Create Repository to publish code as wiki. By default, this permission is set for members of the Project Administrators group.  
User2: Contributors  
Anyone who is a member of the Contributors security group can add or edit wiki pages. Anyone with access to the team project, including stakeholders, can view the wiki.

NEW QUESTION 108

- (Topic 4)

You have an Azure key vault named KV1 and three web servers. You plan to deploy an app named App1 to the web server. You need to ensure that App1 can retrieve a secret from KV1. The solution must meet the following requirements:

- Minimize the number of permission grants required
- Follow the principle of least privilege. What should you include in the solution?

- A. role-based access control (RBAQ permissions
- B. a system-assigned managed identity
- C. a user-assigned managed identity
- D. a service principal

Answer: B

### NEW QUESTION 113

HOTSPOT - (Topic 4)

You have a project Azure DevOps.

You plan to create a build pipeline that will deploy resources by using Azure Resource Manager templates. The templates will reference secrets stored in Azure Key Vault.

You need to ensure that you can dynamically generate the resource ID of the key vault during template deployment.

What should you include in the template? To answer, select the appropriate options in the answer area.

NOTE: Each correct selection is worth one point.

```

"resources": [
{
  "apiVersion": "2018-05-01",
  "name" : "secrets",
  "type": 
  "properties":{
    "mode" : "Incremental",
    :{
      "deployment"
      "template"
      "templateLink"

```

```

contentVersion" : "1.0.0.0",
  "uri" : "[uri(parameters('_artifactsLocation'),
concat('./nested/sqlserver.json',
parameters('_artifactsLocationSasToken')))]"
},
"parameters":{
  "secret":{
    "reference":{
      "keyVault":{
        "id": "[resourceId(parameters('vaultSubscription'),
parameters('vaultResourceGroupName'),
'Microsoft.KeyVault/vaults',
parameters('vaultName'))]"
      },
      "secretName": "[parameters('secretName')]"
    }
  }
}
],

```

- A. Mastered
- B. Not Mastered

Answer: A

Explanation:

```

"resources": [
{
  "apiversion": "2018-05-01",
  "name" : "secrets",
  "type": 
    {
      "Microsoft.KeyVault/vaults",
      "Microsoft.Resources/deployment",
      "Microsoft.Subscription/subscriptions"
    }
  "properties": {
    "mode" : "Incremental",
    : {
      "deployment"
      "template"
      "templateLink"
    }
  }
},
contentVersion" : "1.0.0.0",
  "uri" : "[uri(parameters('_artifactsLocation'),
concat('./nested/sqlserver.json',
parameters('_artifactsLocationSasToken')))]"
},
"parameters": {
  "secret": {
    "reference": {
      "keyVault": {
        "id": "[resourceId(parameters('vaultSubscription'),
parameters('vaultResourceGroupName'),
'Microsoft.KeyVault/vaults',
parameters('vaultName'))]"
      },
      "secretName": "[parameters('secretName')]"
    }
  }
}
],

```

#### NEW QUESTION 118

- (Topic 4)

You have a project in Azure DevOps named Project1. Project1 contains a published wiki.

You need to change the order of pages in the navigation pane of the published wiki in the Azure DevOps portal.

What should you do?

- A. At the root of the wiki, create a file named order that defines the page hierarchy.
- B. At the root of the wiki, create a file named wiki.md that defines the page hierarchy.
- C. Rename the pages in the navigation pane.
- D. Drag and drop the pages in the navigation pane.

**Answer: D**

#### Explanation:

Reorder a wiki page

You can reorder pages within the wiki tree view to have pages appear in the order and hierarchy you want. You can drag-and-drop a page title in the tree view to do the following operations:

Change the parent-child relationship of a page Change the order of the page within the hierarchy Reference:

<https://docs.microsoft.com/en-us/azure/devops/project/wiki/add-edit-wiki>

#### NEW QUESTION 121

DRAG DROP - (Topic 4)

You have a project in Azure DevOps.

You need to configure a dashboard. The solution must include the following metrics:

- Bottlenecks in the software development process
- A burndown chart for the work in a single iteration
- How long it takes to close a work item after the item was started

Which type of widget should you use for each metric? To answer, drag the appropriate widget types to the correct metrics. Each widget type may be used once, more than once, or not at all. You may need to drag the split bar between panes or scroll to view content.

NOTE: Each correct selection is worth one point.



| Widgets                       | Answer Area  |
|-------------------------------|--|
| Burndown chart                | Bottlenecks in the software development process:                   |
| Cumulative flow diagram (CFD) | How long it takes to close a work item after the item was started: |
| Cycle time                    | A burndown chart for the work in a single iteration:               |
| Lead time                     |  |
| Sprint burndown               |  |
| Velocity                      |  |

- A. Mastered  
 B. Not Mastered

**Answer:** A

**Explanation:**

| Widgets                       | Answer Area  |
|-------------------------------|--|
| Burndown chart                | Bottlenecks in the software development process: Cumulative flow diagram (CFD) |
| Cumulative flow diagram (CFD) | How long it takes to close a work item after the item was started: Cycle time  |
| Cycle time                    | A burndown chart for the work in a single iteration: Sprint burndown           |
| Lead time                     |  |
| Sprint burndown               |  |
| Velocity                      |  |

#### NEW QUESTION 126

DRAG DROP - (Topic 4)

You are deploying a new application that uses Azure virtual machines.

You plan to use the Desired State Configuration (DSC) extension on the virtual machines. You need to ensure that the virtual machines always have the same Windows features installed.

Which three actions should you perform in sequence? To answer, move the appropriate actions from the list of actions to the answer area and arrange them in the correct order.

| Actions  | Answer Area |
|--|-------------|
| Load the file to Azure Files.                                  |             |
| Create a PowerShell configuration file.                        |             |
| Create a YAML configuration file.                              |             |
| Configure the Custom Script Extension on the virtual machines. |             |
| Configure the DSC extension on the virtual machines.           |             |
| Load the file to Azure Blob storage.                           |             |

- A. Mastered  
 B. Not Mastered

**Answer:** A

**Explanation:**

Step 1: Create a PowerShell configuration file

You create a simple PowerShell DSC configuration file.

Step 2: Load the file to Azure Blob storage

Package and publish the module to a publically accessible blob container URL

Step 3: Configure the Custom Script Extension on the virtual machines.

The Custom Script Extension downloads and executes scripts on Azure virtual machines.

#### NEW QUESTION 131

- (Topic 4)

Your company plans to use an agile approach to software development.

You need to recommend an application to provide communication between members of the development team who work in locations around the world. The applications must meet the following requirements:

? Provide the ability to isolate the members of different project teams into separate communication channels and to keep a history of the chats within those channels.

? Be available on Windows 10, Mac OS, iOS, and Android operating systems.

? Provide the ability to add external contractors and suppliers to projects.

? Integrate directly with Azure DevOps.

What should you recommend?

- A. Microsoft Project



- B. Bamboo
- C. Microsoft Lync
- D. Microsoft Teams

**Answer:** D

**Explanation:**

? Within each team, users can create different channels to organize their communications by topic. Each channel can include a couple of users or scale to thousands of users.  
 ? Microsoft Teams works on Android, iOS, Mac and Windows systems and devices.  
 It also works in Chrome, Firefox, Internet Explorer 11 and Microsoft Edge web browsers.  
 ? The guest-access feature in Microsoft Teams allows users to invite people outside their organizations to join internal channels for messaging, meetings and file sharing. This capability helps to facilitate business-to-business project management.  
 ? Teams integrates with Azure DevOps.  
 References: <https://searchunifiedcommunications.techtarget.com/definition/Microsoft-Teams>

**NEW QUESTION 134**

- (Topic 4)  
 You use Azure SQL Database Intelligent Insights and Azure Application Insights for monitoring.  
 You need to write ad-hoc queries against the monitoring data. Which query language should you use?

- A. Kusto Query Language (KQL)
- B. PL/pgSQL
- C. PL/SQL
- D. Transact-SQL

**Answer:** A

**Explanation:**

Azure Monitor Logs is based on Azure Data Explorer, and log queries are written using the same Kusto query language (KQL). This is a rich language designed to be easy to read and author, and you should be able to start using it with minimal guidance. Reference:  
<https://docs.microsoft.com/en-us/azure/azure-monitor/log-query/log-query-overview>

**NEW QUESTION 138**

- (Topic 4)  
 Your company develops an app for iOS. All users of the app have devices that are members of a private distribution group in Microsoft Visual Studio App Center.  
 You plan to distribute a new release of the app.  
 You need to identify which certificate file you require to distribute the new release from App Center.  
 Which file type should you upload to App Center?

- A. .cer
- B. .pvk
- C. .pfx
- D. .p12

**Answer:** D

**Explanation:**

A successful iOS device build will produce an ipa file. In order to install the build on a device, it needs to be signed with a valid provisioning profile and certificate. To sign the builds produced from a branch, enable code signing in the configuration pane and upload a provisioning profile (.mobileprovision) and a valid certificate (.p12), along with the password for the certificate.  
 References:  
<https://docs.microsoft.com/en-us/appcenter/build/xamarin/ios/>

**NEW QUESTION 142**

DRAG DROP - (Topic 4)  
 You have an Azure Repos Git repository named repo1.  
 You need to ensure that you can authenticate to repo1 by using SSH.  
 Which four actions should you perform in sequence? To answer, move the appropriate actions from the list of actions to the answer area and arrange them in the correct order.

**Actions**

Add the SSH private key.

Save the SSH key to the root of repo1.

Sign in to Azure DevOps.

Create SSH keys by using ssh-keygen.

Add the SSH public key.

Clone repo1.

**Answer Area**

➤

➤

➤

➤

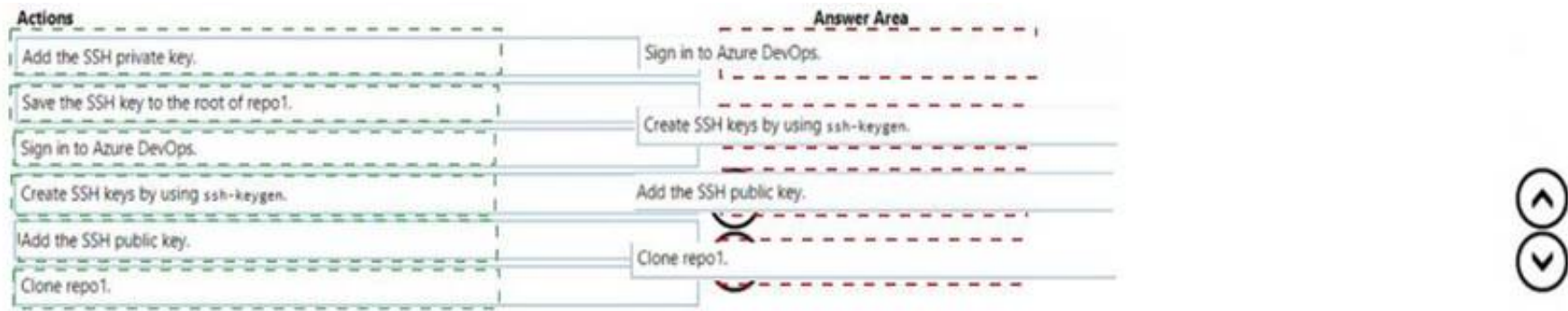
➤

➤

- A. Mastered
- B. Not Mastered

**Answer:** A

**Explanation:**



#### NEW QUESTION 143

- (Topic 4)

You have a project in Azure DevOps named Project1 that contains two environments named environment1 and environment2.

When a new version of Project1 is released, the latest version is deployed to environment2, and the previous version is redeployed to environments

You need to distribute users across the environments. The solution must meet the following requirements:

- New releases must be available to only a subset of the users.
- You must gradually increase the number of users that can access environment2. What should you use?

- A. web app deployment slots
- B. Azure Traffic Manager
- C. VIP swapping
- D. Azure Load Balancer

**Answer: A**

#### NEW QUESTION 147

- (Topic 4)

You have an on-premises app named App1 that accesses Azure resources by using credentials stored in a configuration file.

You plan to upgrade App1 to use an Azure service principal.

What is required for App1 to programmatically sign in to Azure Active Directory (Azure AD)?

- A. the application ID, a client secret, and the object ID
- B. a client secret, the object ID, and the tenant ID
- C. the application ID, a client secret, and the tenant ID
- D. the application ID, a client secret, and the subscription ID

**Answer: C**

#### Explanation:

<https://docs.microsoft.com/en-us/azure/active-directory/develop/app-objects-and-service-principals> "When you've completed the app registration, you've a globally unique instance of the app (the application object) which lives within your home tenant or directory. You also have a globally unique ID for your app (the app or client ID). In the portal, you can then add secrets or certificates and scopes to make your app work, customize the branding of your app in the sign-in dialog, and more."

#### NEW QUESTION 150

- (Topic 4)

Your company uses Azure Artifacts for package management.

You need to configure an upstream source in Azure Artifacts for Python packages. Which repository type should you use as an upstream source?

- A. PyPI
- B. npmjs.org
- C. Maven Central
- D. third-party trusted Python

**Answer: A**

#### Explanation:

Get started with Python packages in Azure Artifacts Create a feed

? Select Artifacts (in the left navigation of your Azure DevOps project).

? On the Artifacts page, select Create Feed.

? In the Create new feed dialog box:

? In the Name field, give the feed a name.

PyPI is the default repository name for twine, which is a tool for publishing Python

packages. Reference:

<https://docs.microsoft.com/en-us/azure/devops/artifacts/quickstarts/python-packages>

#### NEW QUESTION 153

- (Topic 4)

Note: This question is part of a series of questions that present the same scenario. Each question in the series contains a unique solution that might meet the stated goals. Some question sets might have more than one correct solution, while others might not have a correct solution.

After you answer a question in this section, you will NOT be able to return to it. As a result, these questions will not appear in the review screen.

You manage a project in Azure DevOps.

You need to prevent the configuration of the project from changing over time. Solution: Add a code coverage step to the build pipelines.

Does this meet the goal?

- A. Yes

B. No

**Answer:** B

**Explanation:**

Instead implement Continuous Assurance for the project.

Reference:

<https://azsk.azurewebsites.net/04-Continous-Assurance/Readme.html>

**NEW QUESTION 156**

- (Topic 4)

Your company has a project in Azure DevOps.

You need to ensure that when there are multiple builds pending deployment only the most recent build is deployed.

What should you use?

- A. deployment queue settings
- B. deployment conditions
- C. release gates
- D. pull request triggers

**Answer:** A

**Explanation:**

References: <https://docs.microsoft.com/en-us/azure/devops/pipelines/process/stages?tabs=classic&view=azure-devops#queuing-policies>

**NEW QUESTION 157**

SIMULATION - (Topic 4)

You need to ensure that the <https://contoso.com/statushook> webhook is called every time a repository named az40010480345acr1 receives a new version of an image named dotnetapp.

To complete this task, sign in to the Microsoft Azure portal.

- A. Mastered
- B. Not Mastered

**Answer:** A

**Explanation:**

? Sign in to the Azure portal.

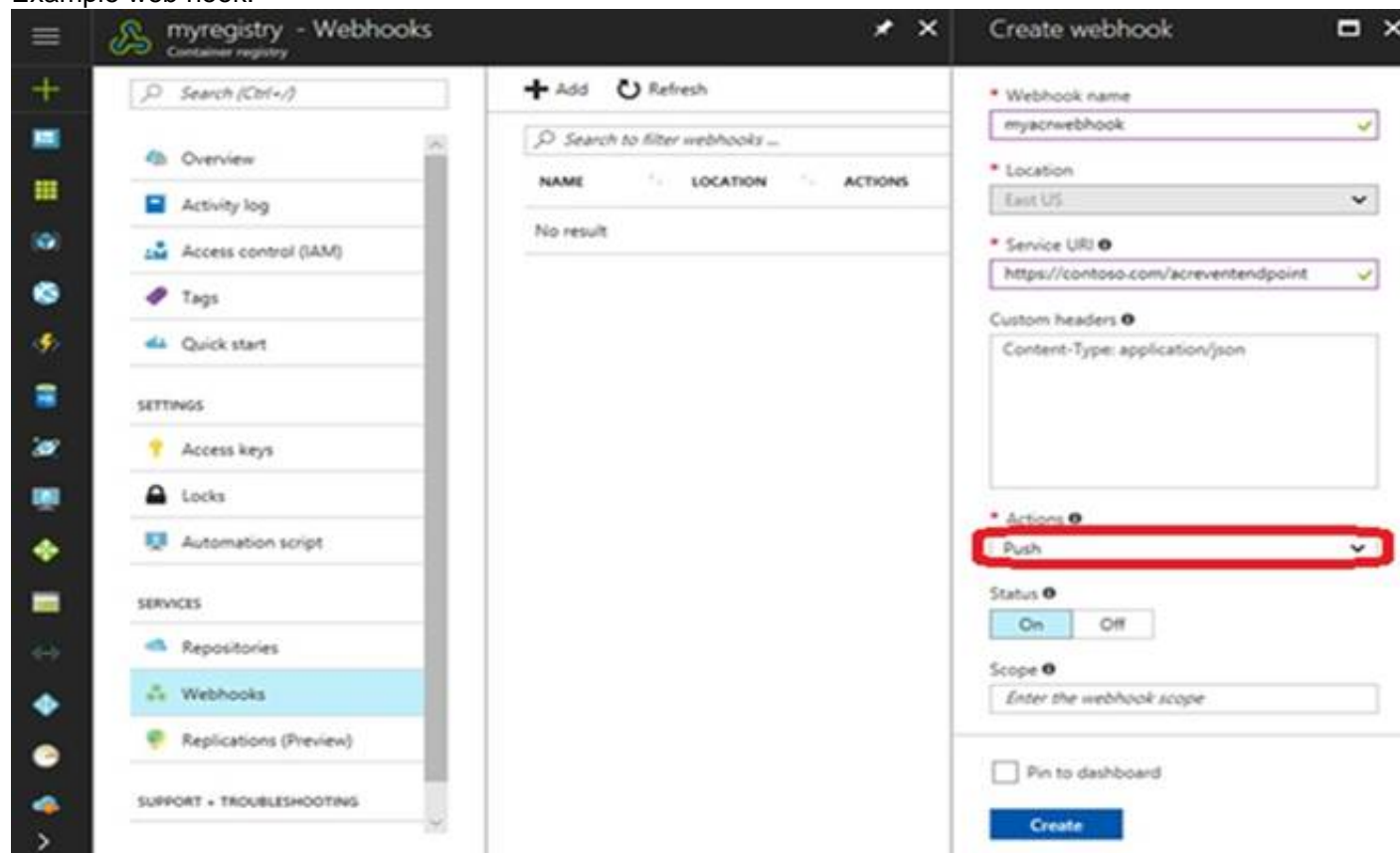
? Navigate to the container registry az40010480345acr1.

? Under Services, select Webhooks.

? Select the existing webhook <https://contoso.com/statushook>, and double-click on it to get its properties.

? For Trigger actions select image push

Example web hook:



**NEW QUESTION 159**

- (Topic 4)

Your company uses Service Now for incident management. You develop an application that runs on Azure.

The company needs to generate a ticket in Service Now when the application fails to authenticate.

Which Azure Log Analytics solution should you use?

- A. Application Insights Connector
- B. Automation & Control
- C. IT Service Management Connector (ITSM)

D. Insight & Analytics

**Answer:** C

**Explanation:**

The IT Service Management Connector (ITSMC) allows you to connect Azure and a supported IT Service Management (ITSM) product/service.

ITSMC supports connections with the following ITSM tools: ServiceNow

System Center Service Manager Provance

Cherwell

With ITSMC, you can

Create work items in ITSM tool, based on your Azure alerts (metric alerts, Activity Log alerts and Log Analytics alerts).

Optionally, you can sync your incident and change request data from your ITSM tool to an Azure Log Analytics workspace.

Reference:

<https://docs.microsoft.com/en-us/azure/azure-monitor/platform/itsmc-overview>

**NEW QUESTION 162**

FILL IN THE BLANK - (Topic 4)

You have a GitHub repository that contains the source code for an app.

You need to identify all the changes made between versions 1.4.16 and 1.6.12 of the source code.

How should you complete the Get command? To answer, select the appropriate options in the answer area.

NOTE: Each correct selection is worth one point.

Git | helper-script > changes.txt

**Answer Area**

git   | helper-script > changes.txt

A. Mastered

B. Not Mastered

**Answer:** A

**Explanation:**

Answer below

get diff v1.4.16 v1.6.12 | helper-script > changes.txt

This command will compare the changes made between versions 1.4.16 and 1.6.12 of the source code in your GitHub repository, pipe the output through the helper-script and save the result to a file called "changes.txt" Please note that, this command assumes that you have a helper-script that can handle get diff output as an input and processes it further. It is not a default get command.

**NEW QUESTION 163**

DRAG DROP - (Topic 4)

You have an Azure Kubernetes Service (AKS) cluster.

You need to deploy an application to the cluster by using Azure DevOps.

Which three actions should you perform in sequence? To answer, move the appropriate actions from the list of actions to the answer area and arrange them in the correct order.

**Actions**

Create a service account in the cluster.

Create a service principal in Azure Active Directory (Azure AD).

Add an Azure Function App for Container task to the deployment pipeline.

Add a Helm package and deploy a task to the deployment pipeline.

Add a Docker Compose task to the deployment pipeline.

Configure RBAC roles in the cluster.

**Answer Area**

A. Mastered

B. Not Mastered

**Answer:** A

**Explanation:**

You can set up a CI/CD pipeline to deploy your apps on a Kubernetes cluster with Azure DevOps by leveraging a Linux agent, Docker, and Helm.

Step 1: Create a service principle in Azure Active Directory (Azure AD)

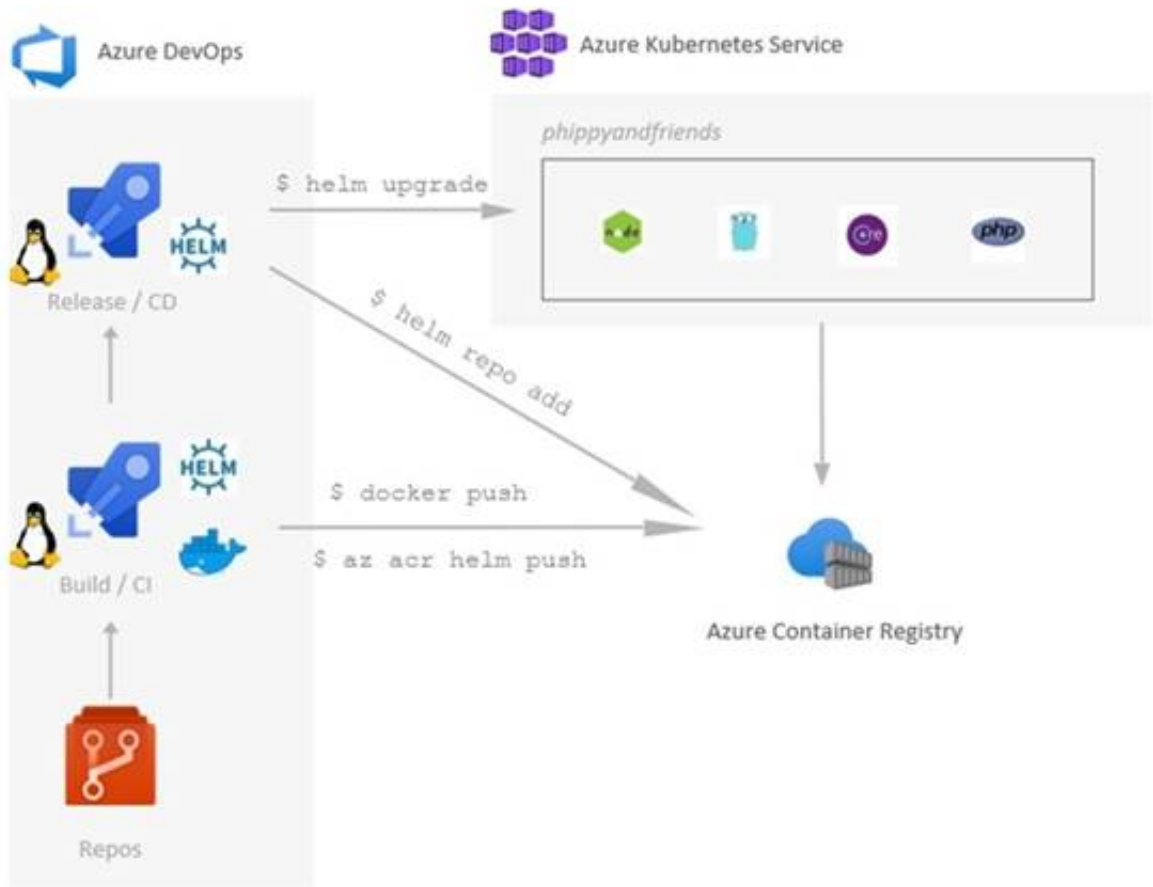
We need to assign 3 specific service principals with specific Azure Roles that need to interact with our ACR and our AKS.

Create a specific Service Principal for our Azure DevOps pipelines to be able to push and pull images and charts of our ACR.

Create a specific Service Principal for our Azure DevOps pipelines to be able to deploy our application in our AKS.

Step 2: Add a Helm package and deploy a task to the deployment pipeline This is the DevOps workflow with containers:





Step 3: Add a Docker Compose task to the deployment pipeline.  
 Dockerfile file is a script leveraged by Docker, composed of various commands (instructions) and arguments listed successively to automatically perform actions on a base image in order to create a new Docker image by packaging the app.

**NEW QUESTION 166**  
 DRAG DROP - (Topic 4)  
 You have an Azure subscription that uses Azure Monitor and contains a Log Analytics workspace.  
 You have an encryption key.  
 You need to configure Azure Monitor to use the key to encrypt log data

| Actions   | Answer Area |
|---|-------------|
| Grant the system-assigned managed identity Certificate permissions for the key vault.       | 1           |
| Create an Azure key vault and store the key.  | 2           |
| Configure the key vault properties for the cluster.   | 3           |
| Grant the system-assigned managed identity Key permissions for the key vault.               | 4           |
| Create an Azure Monitor Logs dedicated cluster that has a system-assigned managed identity. | 5           |
| Link the Log Analytics workspace to the cluster.  |             |

- A. Mastered
- B. Not Mastered

Answer: A

Explanation:

| Actions   | Answer Area |
|---|-------------|
| Grant the system-assigned managed identity Certificate permissions for the key vault.       | 1           |
| Create an Azure key vault and store the key.  | 2           |
| Configure the key vault properties for the cluster.   | 3           |
| Grant the system-assigned managed identity Key permissions for the key vault.               | 4           |
| Create an Azure Monitor Logs dedicated cluster that has a system-assigned managed identity. | 5           |
| Link the Log Analytics workspace to the cluster.  |             |

**NEW QUESTION 169**  
 - (Topic 4)

Note: This question is part of a series of questions that present the same scenario. Each question in the series contains a unique solution that might meet the stated goals. Some question sets might have more than one correct solution, while others might not have a correct solution.  
 After you answer a question in this section, you will NOT be able to return to it. As a result, these questions will not appear in the review screen.  
 You need to recommend an integration strategy for the build process of a Java application. The solution must meet the following requirements:  
 ? The build must access an on-premises dependency management system.  
 ? The build outputs must be stored as Server artifacts in Azure DevOps.  
 ? The source code must be stored in a Git repository in Azure DevOps.  
 Solution: Configure the build pipeline to use a Microsoft-hosted agent pool running the Windows Server 2019 with Visual Studio 2019 image. Include the Java Tool Installer task in the build pipeline.  
 Does this meet the goal?

- A. Yes
- B. No

Answer: A

**Explanation:**

To build and deploy Windows, Azure, and other Visual Studio solutions you'll need at least one Windows agent. Windows agents can also build Java and Android apps.

The Azure Pipelines agent pool offers several virtual machine images to choose from, each including a broad range of tools and software. One such image is Windows Server 2019 with Visual Studio 2019.

Reference:

<https://docs.microsoft.com/en-us/azure/devops/pipelines/agents/v2-windows?view=azure-devops>

<https://docs.microsoft.com/en-us/azure/devops/pipelines/agents/hosted?view=azure-devops&tabs=yaml>

**NEW QUESTION 174**

DRAG DROP - (Topic 4)

You need to use Azure Automation State Configuration to manage the ongoing consistency of virtual machine configurations.

Which five actions should you perform in sequence? To answer, move the appropriate actions from the list of actions to the answer area and arrange them in the correct order.

NOTE: More than one order of answer choices is correct. You will receive credit for any of the orders you select.

| Actions   | Answer Area |
|---|-------------|
| Onboard the virtual machines to Azure Automation State Configuration. |             |
| Check the compliance status of the node.                              |             |
| Create a management group.  |             |
| Assign the node configuration.  | ⬆           |
| Compile a configuration into a node configuration.                    | ⬆           |
| Upload a configuration to Azure Automation State Configuration.       |             |
| Assign tags to the virtual machines.                                  |             |

- A. Mastered
- B. Not Mastered

Answer: A

**Explanation:**

Step 1: Assign the node configuration.

You create a simple DSC configuration that ensures either the presence or absence of the Web-Server Windows Feature (IIS), depending on how you assign nodes.

Step 2: Upload a configuration to Azure Automation State Configuration. You import the configuration into the Automation account.

Step 3: Compiling a configuration into a node configuration Compiling a configuration in Azure Automation

Before you can apply a desired state to a node, a DSC configuration defining that state must be compiled into one or more node configurations (MOF document), and placed on the Automation DSC Pull Server.

Step 4: Onboard the virtual machines to Azure State Configuration

Onboarding an Azure VM for management with Azure Automation State Configuration

Step 5: Check the compliance status of the node.

Viewing reports for managed nodes. Each time Azure Automation State Configuration performs a consistency check on a managed node, the node sends a status report back to the pull server. You can view these reports on the page for that node.

On the blade for an individual report, you can see the following status information for the corresponding consistency check:

The report status — whether the node is "Compliant", the configuration "Failed", or the node is "Not Compliant" (when the node is in ApplyandMonitor mode and the machine is not in the desired state).

References: <https://docs.microsoft.com/en-us/azure/automation/automation-dsc-getting-started>

**NEW QUESTION 177**

SIMULATION - (Topic 4)

You need to create an instance of Azure Application Insights named az400-9940427-main and configure the instance to receive telemetry data from an Azure web app named az400- 9940427-main.

To complete this task, sign in to the Microsoft Azure portal.

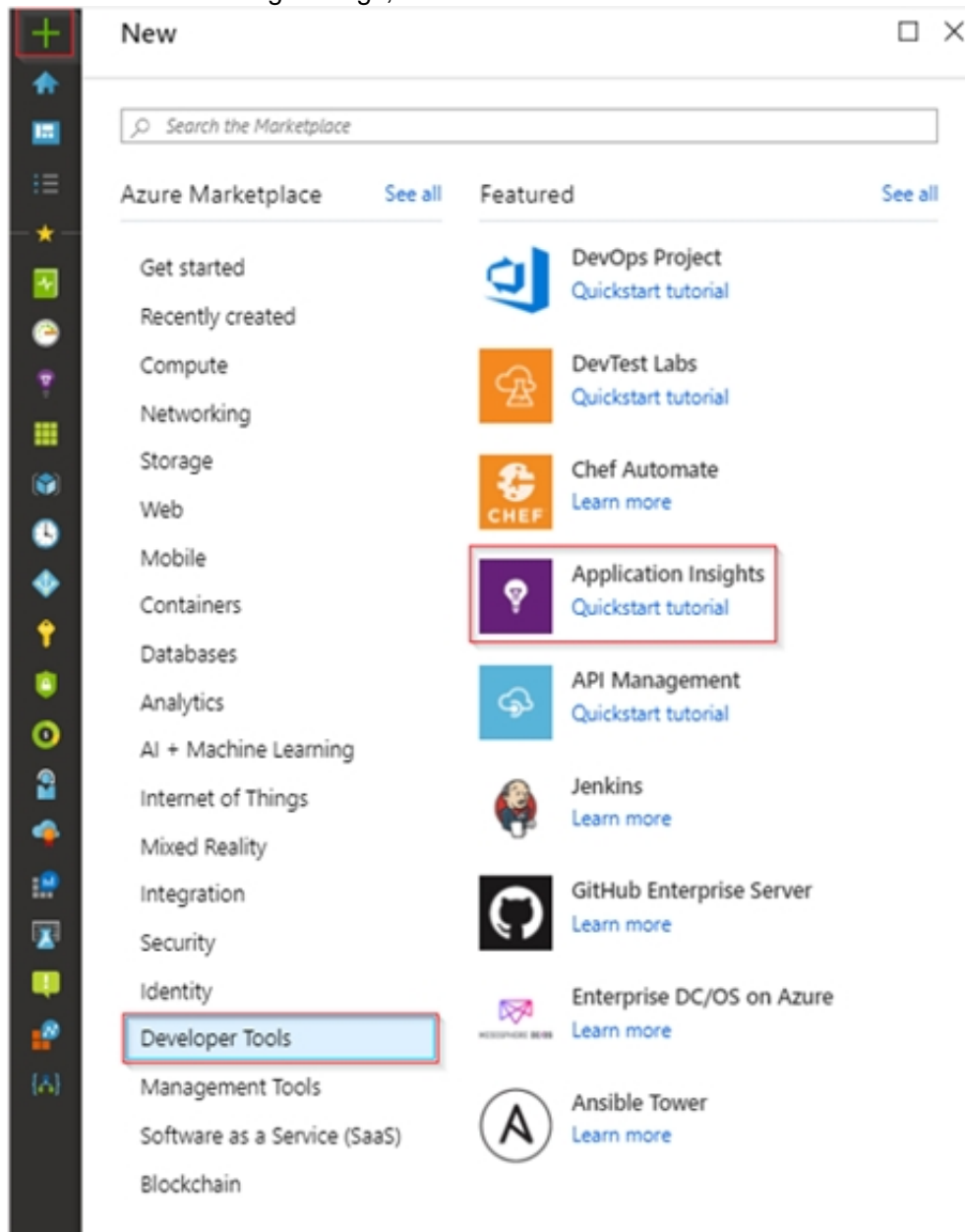
- A. Mastered
- B. Not Mastered

Answer: A

**Explanation:**

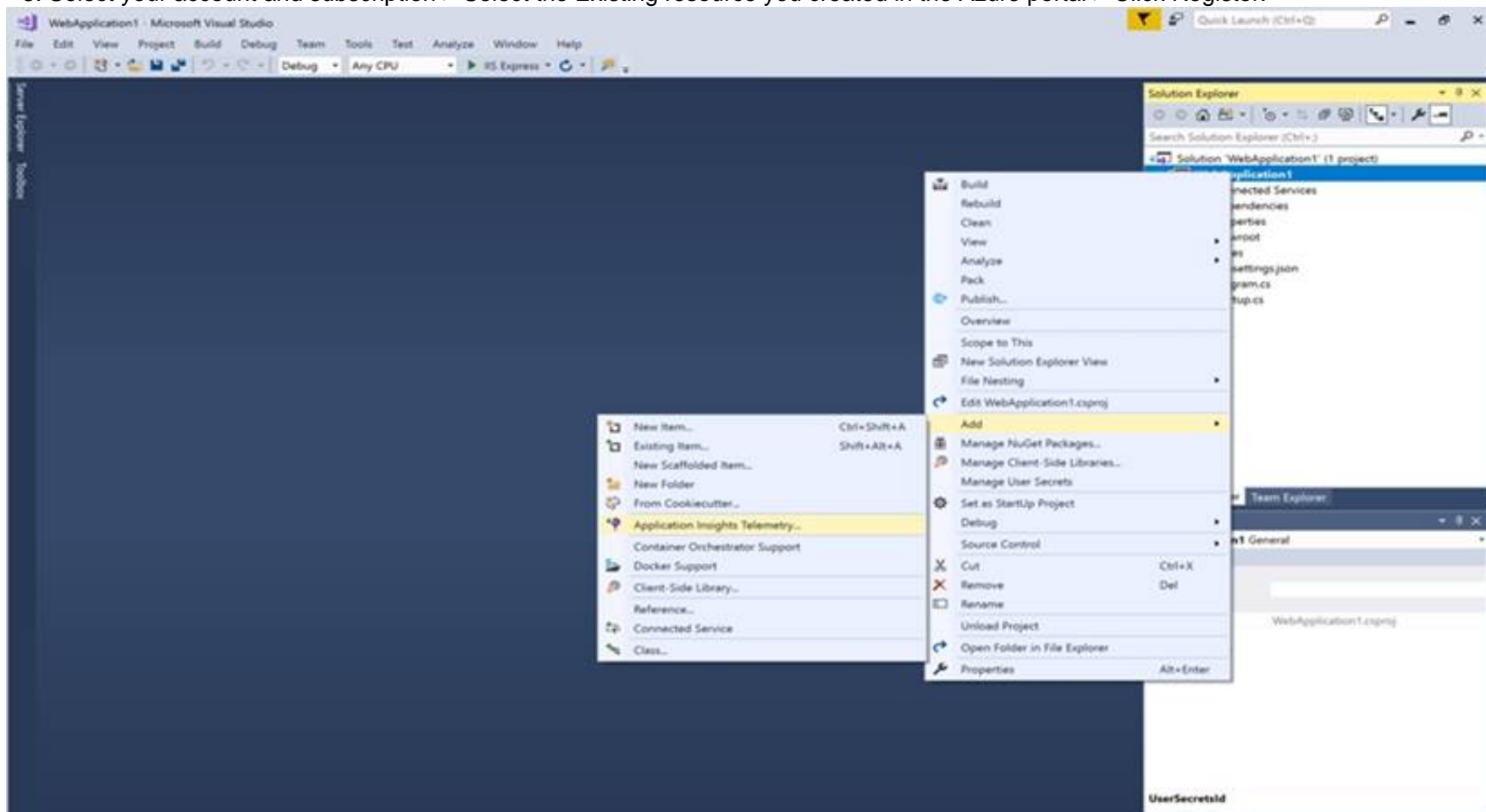
Step 1: Create an instance of Azure Application Insights

- \* 1. Open Microsoft Azure Portal
- \* 2. Log into your Azure account, Select Create a resource > Developer tools > Application Insights.
- \* 3. Enter the following settings, and then select Review + create. Name: az400-9940427-main



Step 2: Configure App Insights SDK

- \* 1. Open your ASP.NET Core Web App project in Visual Studio > Right-click on the AppName in the Solution Explorer > Select Add > Application Insights Telemetry.
- \* 2. Click the Get Started button
- \* 3. Select your account and subscription > Select the Existing resource you created in the Azure portal > Click Register.



#### NEW QUESTION 180

- (Topic 4)

Your company uses the following resources:

- ? Windows Server 2019 container images hosted in an Azure Container Registry
- ? Azure virtual machines that run the latest version of Ubuntu An Azure
- ? Log Analytics workspace Azure Active Directory (Azure AD)
- ? An Azure key vault



For which two resources can you receive vulnerability assessments in Azure Security Center? Each correct answer presents part of the solution.

- A. the Azure Log Analytics workspace
- B. the Azure key vault
- C. the Azure virtual machines that run the latest version of Ubuntu
- D. Azure Active Directory (Azure AD)
- E. the Windows Server 2019 container images hosted in the Azure Container Registry

**Answer:** CE

**Explanation:**

<https://docs.microsoft.com/en-us/azure/security-center/features-paas> <https://docs.microsoft.com/en-us/azure/security-center/container-security>

#### NEW QUESTION 181

- (Topic 4)

Your company has a project in Azure DevOps for a new application. The application will be deployed to several Azure virtual machines that run Windows Server 2016.

You need to recommend a deployment strategy for the virtual machines. The strategy must meet the following requirements:

- Ensure that the virtual machines maintain a consistent configuration.
  - Minimize administrative effort to configure the virtual machines
- What should you include in the recommendation?

- A. Deployment YAML and Azure pipeline stage templates
- B. Azure Resource Manager templates and the Custom Script Extension for Windows
- C. Azure Resource Manager templates and the PowerShell Desired State Configuration (DSC) extension for Windows
- D. Deployment YAML and Azure pipeline deployment groups

**Answer:** C

**Explanation:**

The Custom Script Extension downloads and executes scripts on Azure virtual machines. This extension is useful for post deployment configuration, software installation, or any other configuration or management tasks. Scripts can be downloaded from Azure storage or GitHub, or provided to the Azure portal at extension run time. The Custom Script Extension integrates with Azure Resource Manager templates, and can be run using the Azure CLI, PowerShell, Azure portal, or the Azure Virtual Machine REST API.

References:

<https://docs.microsoft.com/en-us/azure/virtual-machines/extensions/custom-script-windows>

#### NEW QUESTION 184

- (Topic 4)

You are creating a dashboard in Azure Boards.

You need to visualize the time from when work starts on a work item until the work item is closed.

Which type of widget should you use?

- A. cycle time
- B. velocity
- C. cumulative flow
- D. lead time

**Answer:** D

#### NEW QUESTION 188

DRAG DROP - (Topic 4)

You are implementing a new project in Azure DevOps.

You need to assess the performance of the protect. The solution must identity the following metrics:

- How long it takes to complete a work item
- \* The percentage of defects found in production

Which DevOps KPI should you review for each metric? To answer drag the appropriate KPIs to the correct metric. Each KPI may be used once, more than once, or not at all. You may need to drag the spirt bar between panes or scroll to view content.

NOTE Each correct selection is worth one point.

**KPIs**

- Application failure rates
- Bug report rates
- Burndown trend
- Cycle time
- Defect escape rate
- Deployment speed
- Lead time
- Mean time to recover

**Answer Area**

How long it takes to complete a work item:

The percentage of defects found in production:

- A. Mastered
- B. Not Mastered

**Answer:** A

**Explanation:**





#### NEW QUESTION 193

- (Topic 4)

unique solution that might meet the stated goals. Some question sets might have more than one correct solution, while others might not have a correct solution. After you answer a question in this section, you will NOT be able to return to it. As a result these questions will not appear in the review screen.

You integrate a cloud-hosted Jenkins server and a new Azure DevOps deployment. You need Azure DevOps to send a notification to Jenkins when a developer commits

changes to a branch in Azure Repos.

Solution: You create a service hook subscription that uses the build completed event. Does this meet the goal?

- A. Yes
- B. No

**Answer: B**

#### Explanation:

You can create a service hook for Azure DevOps Services and TFS with Jenkins. However, the service subscription event should use the code pushed event, is triggered when the code is pushed to a Git repository.

#### NEW QUESTION 194

SIMULATION - (Topic 4)

You need to configure an Azure web app named az400-9940427-main to contain an environmental variable named "MAX\_ITEMS". The environmental variable must have a value of 50.

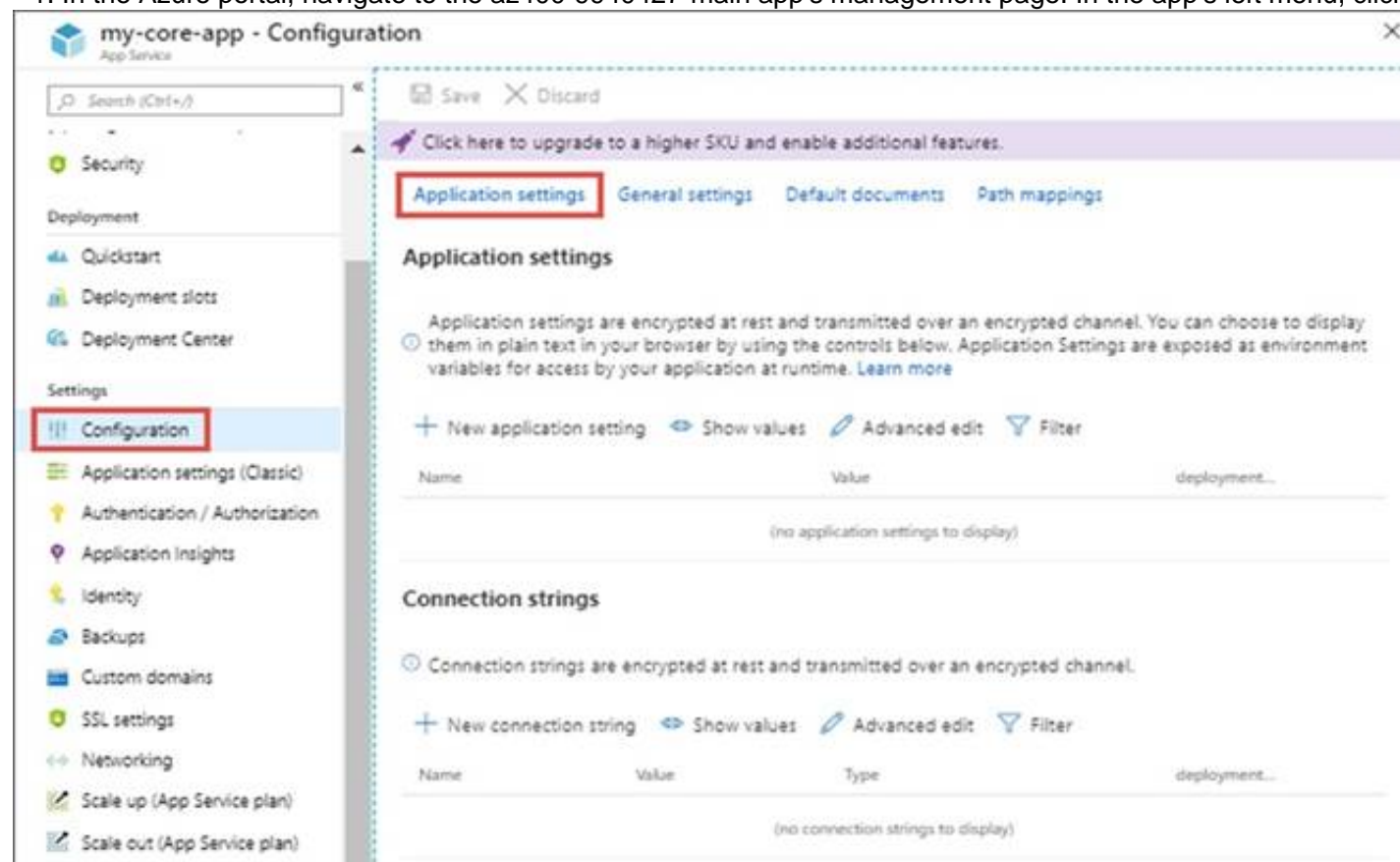
To complete this task, sign in to the Microsoft Azure portal.

- A. Mastered
- B. Not Mastered

**Answer: A**

#### Explanation:

\* 1. In the Azure portal, navigate to the az400-9940427-main app's management page. In the app's left menu, click Configuration > Application settings.



\* 2. Click New Application settings

\* 3. Enter the following:

? Name: MAX\_ITEMS

? Value: 50

References:

https://docs.microsoft.com/en-us/azure/app-service/configure-common

#### NEW QUESTION 196

DRAG DROP - (Topic 4)

As part of your application build process, you need to deploy a group of resources to Azure by using an Azure Resource Manager template located on GitHub.

Which three action should you perform in sequence? To answer, move the appropriate actions from the list of actions to the answer area and arrange them in the correct order.

**Actions**

Create a package.

Add an Azure Resource Group Deployment task.

Create a job agent.

Create a release pipeline.

Set the template parameters.

**Answer Area**

- A. Mastered  
 B. Not Mastered

**Answer: A**

**Explanation:**

Step 1: Create a release pipeline You need to create a new pipeline.

You can integrate Azure Resource Manager templates (ARM templates) with Azure Pipelines for continuous integration and continuous deployment (CI/CD).

Step 2: Add an Azure Resource Group Deployment task Step 3: Set the template parameters

**NEW QUESTION 200**

- (Topic 4)

You are developing an open source solution that uses a GitHub repository. You create a new public project in Azure DevOps.

You plan to use Azure Pipelines for continuous build. The solution will use the GitHub

Checks API.

Which authentication type should you use?

- A. a personal access token  
 B. SAML  
 C. GitHub App  
 D. OAuth

**Answer: C**

**Explanation:**

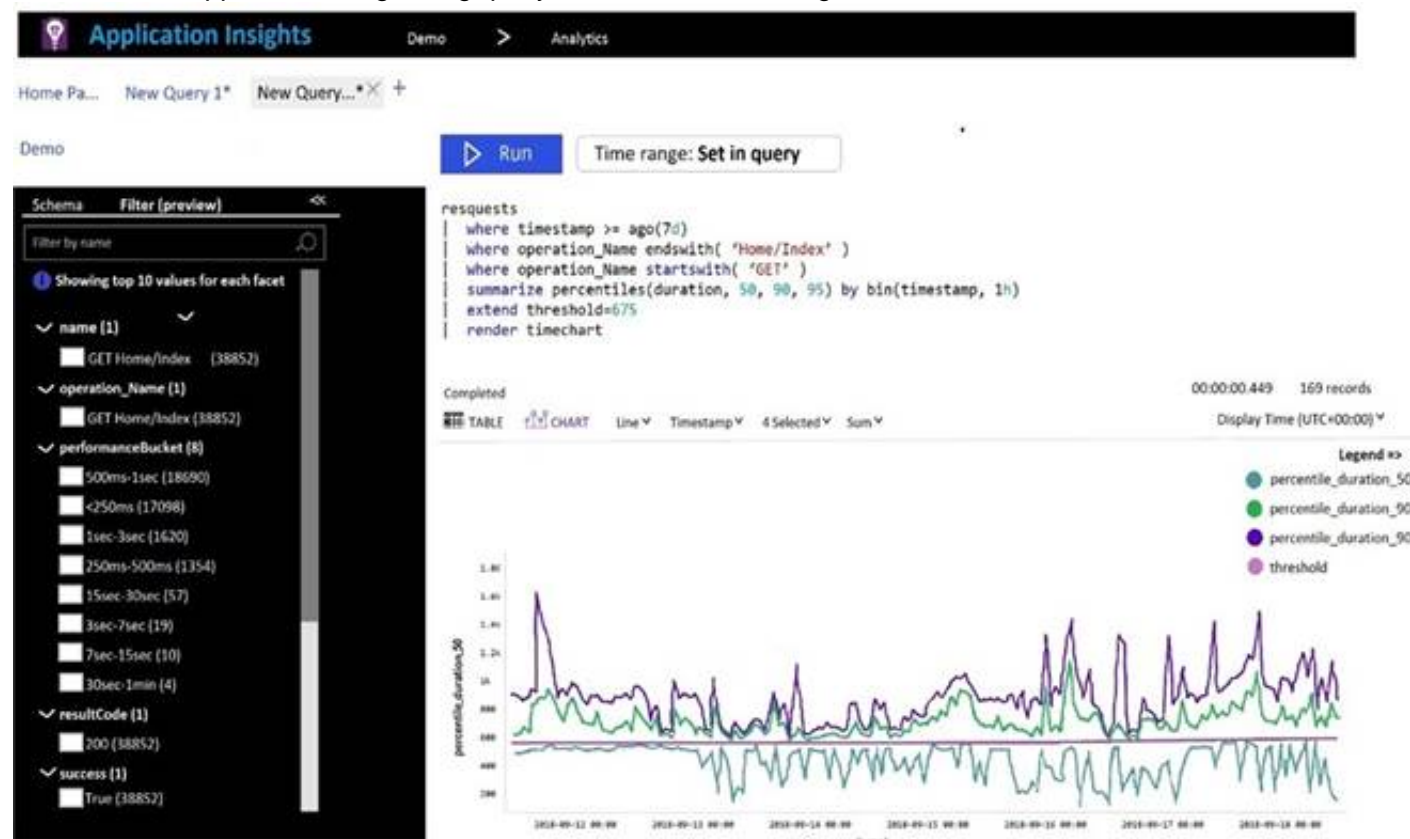
<https://docs.microsoft.com/en-us/azure/devops/pipelines/repos/github?view=azure-devops&tabs=yaml> <https://developer.github.com/v3/checks/>

**NEW QUESTION 202**

HOTSPOT - (Topic 4)

You plan to create alerts that will be triggered based on the page load performance of a home page.

You have the Application Insights log query shown in the following exhibit.



Use the drop-down menus to select the answer choice that completes each statement based on the information presented in the graphic.

NOTE: Each correct selection is worth one point.

To create an alert based on the page load experience of most users, the alerting level must be based on [answer choice].

|                        |   |
|------------------------|---|
|                        | ▼ |
| percentile_duration_50 |   |
| percentile_duration_90 |   |
| percentile_duration_95 |   |
| threshold              |   |

To only create an alert when authentication error occurs on the server, the query must be filtered on [answer choice].

|            |   |
|------------|---|
|            | ▼ |
| item Type  |   |
| resultCode |   |
| source     |   |
| success    |   |

- A. Mastered
- B. Not Mastered

**Answer:** A

**Explanation:**

Timeline  
 Description automatically generated with low confidence Box 1: percentile\_duration\_95  
 Box 2: success For example – requests  
 | project name, url, success  
 | where success == "False"  
 This will return all the failed requests in my App Insights within the specified time range.

**NEW QUESTION 206**

- (Topic 4)

You have an Azure subscription. The subscription contains virtual machines that run either Windows Server or Linux. You plan to use Prometheus to monitor performance metrics. You need to integrate Prometheus and Azure Monitor. Which two actions should you perform? Each correct answer presents part of the solution. NOTE: Each correct selection is worth one point.

- A. Install a Prometheus server on a Windows virtual machine in Azure.
- B. On each virtual machine, expose the metrics endpoint.
- C. On each virtual machine, enable the Azure Diagnostics extension.
- D. On each virtual machine, enable the containerized agent for Azure Monitor.
- E. Expose a virtual network service endpoint for Azure Storage.
- F. Install a Prometheus server on a Linux virtual machine in Azure.

**Answer:** AB

**NEW QUESTION 211**

- (Topic 4)

You use Azure Pipelines to build and release application code, The pipelines include validation tests that must be completed successfully before deployment proceeds from the test stage to production. You discover inconsistent test outcomes for the same source code. You need to validate the test logic. What should you do?

- A. Decrease the test pass rate.
- B. Configure a parallel test runner.
- C. Enable flaky test detection.
- D. Install the Analytics extension.

**Answer:** B

**NEW QUESTION 212**

- (Topic 4)

You plan to share packages that you wrote, tested, validated, and deployed by using Azure Artifacts. You need to release multiple builds of each package by using a single feed. The solution must limit the release of packages that are in development. What should you use?

- A. global symbols
- B. local symbols
- C. upstream sources
- D. views

**Answer:** C

**Explanation:**

Views enable you to share subsets of the NuGet, npm, Maven, Python and Universal Packages package-versions in your feed with consumers. A common use for views is to share package versions that have been tested, validated, or deployed but hold back packages still under development and packages that didn't meet a quality bar. <https://docs.microsoft.com/en-us/azure/devops/artifacts/concepts/views?view=azure-devops>

**NEW QUESTION 213**

HOTSPOT - (Topic 4)



Your company is building a new web application.

You plan to collect feedback from pilot users on the features being delivered.

All the pilot users have a corporate computer that has Google Chrome and the Microsoft Test & Feedback extension installed. The pilot users will test the application by using Chrome.

You need to identify which access levels are required to ensure that developers can request and gather feedback from the pilot users. The solution must use the principle of least privilege.

Which access levels in Azure DevOps should you identify? To answer, select the appropriate options in the answer area.

NOTE: Each correct selection is worth one point.

Developers:

Pilot users:

- A. Mastered
- B. Not Mastered

**Answer:** A

**Explanation:**

Graphical user interface, text, application Description automatically generated

Box 1: Basic

Assign Basic to users with a TFS CAL, with a Visual Studio Professional subscription, and to users for whom you are paying for Azure Boards & Repos in an organization.

Box 2: Stakeholder

Assign Stakeholders to users with no license or subscriptions who need access to a limited set of features.

Note:

You assign users or groups of users to one of the following access levels: Basic: provides access to most features

VS Enterprise: provides access to premium features

Stakeholders: provides partial access, can be assigned to unlimited users for free

**NEW QUESTION 217**

HOTSPOT - (Topic 4)

You company uses Azure DevOps to deploy infrastructures to Azure. Pipelines are developed by using YAML.

You execute a pipeline and receive the results in the web portal for Azure Pipelines as shown in the following exhibit.

Use the drop-down menus to select the answer choice that completes each statement based on the information presented in the graphic.

NOTE: Each correct selection is worth one point.



The pipeline contains

|              |   |
|--------------|---|
|              | ▼ |
| one stage    |   |
| two stages   |   |
| three stages |   |
| four stages  |   |
| five stages  |   |

Build\_vm contains

|            |   |
|------------|---|
|            | ▼ |
| one job    |   |
| two jobs   |   |
| three jobs |   |
| four jobs  |   |
| five jobs  |   |

- A. Mastered
- B. Not Mastered

Answer: A

Explanation:

The pipeline contains

|              |   |
|--------------|---|
|              | ▼ |
| one stage    |   |
| two stages   |   |
| three stages |   |
| four stages  |   |
| five stages  |   |

Build\_vm contains

|            |   |
|------------|---|
|            | ▼ |
| one job    |   |
| two jobs   |   |
| three jobs |   |
| four jobs  |   |
| five jobs  |   |

NEW QUESTION 218

DRAG DROP - (Topic 4)

Your company plans to deploy an application to the following endpoints:

? Ten virtual machines hosted in Azure

? Ten virtual machines hosted in an on-premises data center environment

All the virtual machines have the Azure Pipelines agent.

You need to implement a release strategy for deploying the application to the endpoints. To answer,

drag the appropriate components to the correct endpoints. Each component may be used once, more than once, or not at all. You may need to drag the split bar between panes or scroll to view content.

NOTE: Each correct selection is worth one point.

Components

Answer Area

A deployment group

A management group

A resource group

Application roles

Ten virtual machines hosted in Azure:

Ten virtual machines hosted in an on-premises data center environment:

- A. Mastered
- B. Not Mastered

Answer: A

Explanation:

Box 1: A deployment group  
When authoring an Azure Pipelines or TFS Release pipeline, you can specify the deployment targets for a job using a deployment group.  
If the target machines are Azure VMs, you can quickly and easily prepare them by installing the Azure Pipelines Agent Azure VM extension on each of the VMs, or by using the Azure Resource Group Deployment task in your release pipeline to create a deployment group dynamically.  
Box 2: A deployment group  
References: <https://docs.microsoft.com/en-us/azure/devops/pipelines/release/deployment-groups>

NEW QUESTION 221

HOTSPOT - (Topic 4)  
You are finalizing a release in GitHub.  
You need to apply the following labels to the release:  
? Name  
? Email  
? Release v3.0  
? Release date  
How should you complete the get command? To answer, select the appropriate options in the answer area.  
NOTE: Each correct selection is worth one point.

git

|        |    |
|--------|----|
|        |    |
| add    | -a |
| commit | -b |
| push   | -c |
| tag    | -m |

v3.0

|    |  |
|----|--|
|    |  |
| -a |  |
| -b |  |
| -c |  |
| -m |  |

"Release v3.0"

- A. Mastered
- B. Not Mastered

Answer: A

Explanation:

Box 1; tag  
Tagging. Like most VCSs, Get has the ability to tag specific points in a repository's history as being important. Typically, people use this functionality to mark release points (v1.0, v2.0 and so on).  
Box 2: -a  
Creating an annotated tag in Get is simple. The easiest way is to specify -a when you run the tag command:  
Example:  
\$ get tag -a v1.4 -m "my version 1.4"  
Box 3: -m

NEW QUESTION 226

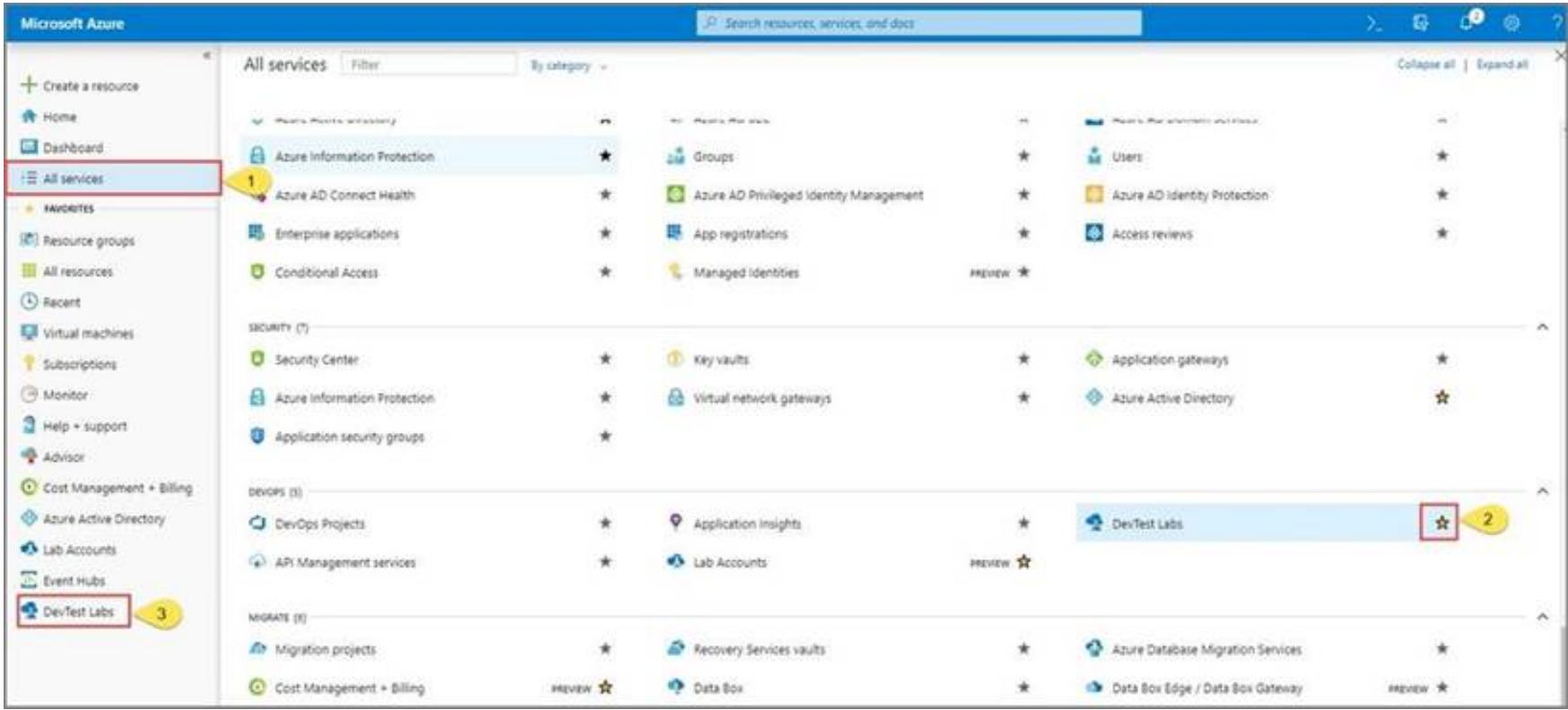
SIMULATION - (Topic 4)  
You need to create a virtual machine template in an Azure DevTest Labs environment named az400-9940427-dtl1. The template must be based on Windows Server 2016 Datacenter. Virtual machines created from the template must include the selenium tool and the Google Chrome browser.  
To complete this task, sign in to the Microsoft Azure portal.

- A. Mastered
- B. Not Mastered

Answer: A

Explanation:

- \* 1. Open Microsoft Azure Portal
- \* 2. Select All Services, and then select DevTest Labs in the DEVOPS section.



- \* 3. From the list of labs, select the az400-9940427-dtl1 lab
- \* 4. On the home page for your lab, select + Add on the toolbar.
- \* 5. Select the Windows Server 2016 Datacenter base image for the VM.
- \* 6. Select automation options at the bottom of the page above the Submit button.
- \* 7. You see the Azure Resource Manager template for creating the virtual machine.
- \* 8. The JSON segment in the resources section has the definition for the image type you selected earlier.

References:  
<https://docs.microsoft.com/bs-cyrl-ba/azure//lab-services/devtest-lab-vm-powershell>

#### NEW QUESTION 228

DRAG DROP - (Topic 4)

You are configuring Azure DevOps build pipelines. You plan to use hosted build agents.

Which build agent pool should you use to compile each application type? To answer, drag the appropriate build agent pools to the correct application types. Each build agent pool may be used once, more than once, or not at all. You may need to drag the split bar between panes or scroll to view content.

NOTE: Each correct selection is worth one point.

| Build Agent Pools        | Answer Area  |
|--------------------------|--|
| Hosted Windows Container |  |
| Hosted Ubuntu 1604       |  |
| Hosted macOS             | An application that runs on iOS: <input type="text"/>  |
| Hosted                   | An Internet Information Services (IIS) web application that runs in Docker: <input type="text"/> |
| Default                  |  |

- A. Mastered
- B. Not Mastered

Answer: A

#### Explanation:

Box 1: Hosted macOS

Hosted macOS pool (Azure Pipelines only): Enables you to build and release on macOS without having to configure a self-hosted macOS agent. This option affects where your data is stored.

Box 2: Hosted

Hosted pool (Azure Pipelines only): The Hosted pool is the built-in pool that is a collection of Microsoft-hosted agents.

#### NEW QUESTION 231

- (Topic 4)

You manage source code control and versioning by using GitHub. A large file is committed to a repository accidentally.

You need to reduce the size of the repository. The solution must remove the file from the repository.

What should you use?

- A. bfg
- B. 1fs
- C. gvfs
- D. init

Answer: A

#### NEW QUESTION 232

- (Topic 4)  
You are automating the build process for a Java-based application by using Azure DevOps. You need to add code coverage testing and publish the outcomes to the pipeline.  
What should you use?

- A. Cobertura
- B. Bullseye Coverage
- C. MSTest
- D. Coverlet

Answer: A

**Explanation:**  
Use Publish Code Coverage Results task in a build pipeline to publish code coverage results to Azure Pipelines or TFS, which were produced by a build in Cobertura or JaCoCo format.  
Reference:  
<https://docs.microsoft.com/en-us/azure/devops/pipelines/tasks/test/publish-code-coverage- results>

NEW QUESTION 237

DRAG DROP - (Topic 4)  
You need to deploy a new project in Azure DevOps that has the following requirements:

- The lead developer must be able to create repositories, manage permissions, manage policies, and contribute to the repository.
- Developers must be able to contribute to the repository and create branches, but NOT bypass policies when pushing builds.
- Project managers must only be able to view the repository.
- The principle of least privilege must be used.

You create a new Azure DevOps project team for each role.  
To which Azure DevOps groups should you add each team? To answer, drag the appropriate groups to the correct teams. Each group may be used once, more than once, or not at all. You may need to drag the split bar between panes or scroll to view content. NOTE: Each correct selection is worth one point.

Azure DevOps groups

Build Administrators

Contributors

Project Administrators

Project Collection Administrators

Project Collection Valid Users

Answer Area

Project manager:

Lead developer:

Developer:

- A. Mastered
- B. Not Mastered

Answer: A

**Explanation:**

Azure DevOps groups

Build Administrators

Contributors

Project Administrators

Project Collection Administrators

Project Collection Valid Users

Answer Area

Project manager:

Lead developer:

Developer:

NEW QUESTION 238

- (Topic 4)  
You use GitHub for source control  
You are evaluating whether to use proxying to add a private upstream MyGet package feed to your MyGet feed. What are two possible advantages of this approach? Each correct answer presents a complete solution.  
NOTE: Each correct selection is worth one point.

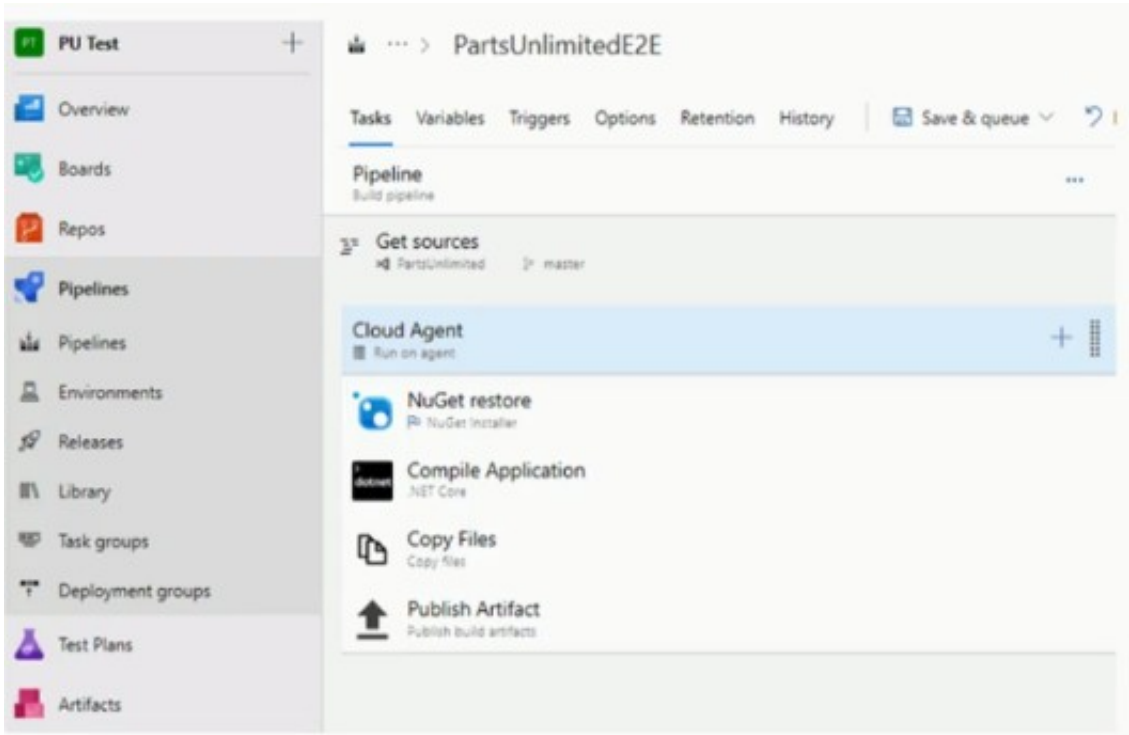
- A. minimizes latency when accessing the package
- B. provides automatic authentication
- C. minimizes the impact on your storage quota
- D. minimizes the impact of upstream source availability issues

Answer: BC

NEW QUESTION 242

HOTSPOT - (Topic 4)  
You have the Azure DevOps pipeline shown in the following exhibit.





Use the drop-down menus to select the answer choice that completes each statement based on the information presented in the graphic.

**Answer Area**

The pipeline has  job(s).

The pipeline has  task(s).

- A. Mastered
- B. Not Mastered

**Answer:** A

**Explanation:**

Box 1: 1  
 The Cloud agent job only.  
 Box 2: 4  
 The pipelines has the four tasks: NuGet restore, Compile Application, Copy Files, and Publish Artifact.

**NEW QUESTION 247**

- (Topic 4)  
 You are designing the security validation strategy for a project in Azure DevOps.  
 You need to identify package dependencies that have known security issues and can be resolved by an update.  
 What should you use?

- A. Octopus Deploy
- B. Jenkins
- C. Gradle
- D. SonarQube

**Answer:** D

**Explanation:**

With enterprise level of SonarQube you can use OWASP that runs the security scans for known vulnerabilities. <https://www.sonarqube.org/features/security/>  
[https://www.sonarqube.org/features/security/owasp/?gclid=Cj0KCQiAzZL- BRDnARIsAPCJs70Teq0-efl2Hd\\_h-kykCB7I\\_C7L88Q7kpiuTzuD6Xw1jUb6ZqIP7O0aApVzEALw\\_wcB](https://www.sonarqube.org/features/security/owasp/?gclid=Cj0KCQiAzZL- BRDnARIsAPCJs70Teq0-efl2Hd_h-kykCB7I_C7L88Q7kpiuTzuD6Xw1jUb6ZqIP7O0aApVzEALw_wcB)

**NEW QUESTION 251**

- (Topic 4)  
 Note: This question n part of a series of questions that present the same scenario. Each question in the series contains a unique solution that might meet the stated goals. Some question sets might have more than one correct solution, while others might not have a correct solution  
 After you answer a question in this section, you will NOT be able to return to it. As a result these questions will not appear in the review screen.  
 You have an approval process that contains a condition. The condition requires that releases be approved by a team leader before they are deployed.  
 You have a policy stating that approvals must occur within eight hours.  
 You discover that deployments fail if the approvals lake longer than two hours.  
 You need to ensure that the deployments only fail if the approvals take longer than eight hours.  
 Solution: From Pre-deployment conditions, you modify the Timeout setting for pre- deployment approvals.  
 Does this meet the goal?

- A. Yes
- B. No

**Answer:** B

**Explanation:**

Use a gate instead of an approval instead.

References: <https://docs.microsoft.com/en-us/azure/devops/pipelines/release/approvals/gates>

**NEW QUESTION 252**

- (Topic 4)

You plan to use a NuGet package in a project in Azure DevOps. The NuGet package is in a feed that requires authentication.

You need to ensure that the project can restore the NuGet package automatically. What should the project use to automate the authentication?

- A. an Azure Automation account
- B. an Azure Artifacts Credential Provider
- C. an Azure Active Directory (Azure AD) account that has multi-factor authentication (MFA) enabled
- D. an Azure Active Directory (Azure AD) service principal D18912E1457D5D1DDCBD40AB3BF70D5D

**Answer:** B

**Explanation:**

The Azure Artifacts Credential Provider automates the acquisition of credentials needed to restore NuGet packages as part of your .NET development workflow. It integrates with MSBuild, dotnet, and NuGet(.exe) and works on Windows, Mac, and Linux. Any time you want to use packages from an Azure Artifacts feed, the Credential Provider will automatically acquire and securely store a token on behalf of the NuGet client you're using.

Reference:

<https://github.com/Microsoft/artifacts-credprovider>

**NEW QUESTION 257**

- (Topic 4)

After you answer a question in this section, you will NOT be able to return to it. As a result, these questions will not appear in the review screen.

You have an Azure DevOps organization named Contoso and an Azure subscription. The subscription contains an Azure virtual machine scale set named VMSS1 that is configured for autoscaling.

You have a project in Azure DevOps named Project1. Project1 is used to build a web app named App1 and deploy App1 to VMSS1.

You need to ensure that an email alert is generated whenever VMSS1 scales in or out. Solution: From Azure DevOps, configure the Notifications settings for Project1.

Does this meet the goal?

- A. Yes
- B. No

**Answer:** B

**Explanation:**

Notifications help you and your team stay informed about activity that occurs within your projects in Azure DevOps. You can get notified when changes occur to the following items:

- ? work items
- ? code reviews
- ? pull requests
- ? source control files
- ? builds

Reference:

<https://docs.microsoft.com/en-us/azure/devops/notifications/about-notifications?view=azure-devops>

**NEW QUESTION 262**

HOTSPOT - (Topic 4)

Your company has an Azure subscription.

The company requires that all resource group in the subscription have a tag named organization set to a value of Contoso.

You need to implement a policy to meet the tagging requirement.

How should you complete the policy? To answer, select the appropriate options in the answer area.

NOTE: Each correct selection is worth one point.

```

{
  "policyRule": {
    "if": {
      "allOf": [
        {
          "field": "type",
          "equals":
            

"MicrosoftResources/deployments"
"MicrosoftResources/subscriptions"
"MicrosoftResources/subscriptions/resourceGroups"


,
        {
          "not": {
            "field": "tags['organization']",
            "equals": "Contoso"
          }
        }
      ]
    },
    "then": {
      "effect":
        

"Append",
"Deny",
"DeployIfNotExists",


      "details": [
        {
          "field": "tags['organization']",
          "value": "Contoso"
        }
      ]
    }
  }
}

```

- A. Mastered
- B. Not Mastered

**Answer: A**

**Explanation:**

Box 1: " Microsoft.Resources/subscriptions/resourceGroups"

Box 2: "Deny",

Sample - Enforce tag and its value on resource groups

```

},
"policyRule": { "if": {
"allOf": [
{
"field": "type",
"equals": "Microsoft.Resources/subscriptions/resourceGroups"
},
{
"not": {
"field": "[concat('tags[' ,parameters('tagName'), '']]", "equals": "[parameters('tagValue')]"
}
}
]
},
"then": {
"effect": "deny"
}
}
}

```

References:

<https://docs.microsoft.com/en-us/azure/governance/policy/samples/enforce-tag-on- resource-groups>

**NEW QUESTION 267**

- (Topic 4)

Your company creates a new Azure DevOps team. D18912E1457D5D1DDCBD40AB3BF70D5D

You plan to use Azure DevOps for sprint planning.

You need to visualize the flow of your work by using an agile methodology. Which Azure DevOps component should you use?

- A. Kanban boards
- B. sprint planning
- C. delivery plans
- D. portfolio backlogs

**Answer:** A

**Explanation:**

Customizing Kanban boards

To maximize a team's ability to consistently deliver high quality software, Kanban emphasize two main practices. The first, visualize the flow of work, requires you to map your team's workflow stages and configure your Kanban board to match. Your Kanban board turns your backlog into an interactive signboard, providing a visual flow of work.

Reference: <https://azuredevopslabs.com/labs/azuredevops/agile/>

**NEW QUESTION 269**

- (Topic 4)

Note: This question is part of a series of questions that present the same scenario. Each question in the series contains a unique solution that might meet the stated goals. Some question sets might have more than one correct solution, while others might not have a correct solution.

After you answer a question in this section, you will NOT be able to return to it. As a result, these questions will not appear in the review screen.

You have an Azure DevOps project.

Your build process creates several artifacts.

You need to deploy the artifacts to on-premises servers.

Solution: You deploy an Octopus Deploy server. You deploy a polled Tentacle agent to an on-premises server. You add an Octopus task to the deployment pipeline.

Does this meet the goal?

A. Yes

B. No

**Answer:** B

**Explanation:**

Instead you should deploy an Azure self-hosted agent to an on-premises server.

Note: To build your code or deploy your software using Azure Pipelines, you need at least one agent.

If your on-premises environments do not have connectivity to a Microsoft-hosted agent pool (which is typically the case due to intermediate firewalls), you'll need to manually configure a self-hosted agent on on-premises computer(s).

Reference:

<https://docs.microsoft.com/en-us/azure/devops/pipelines/agents/agents?view=azure-devops>

**NEW QUESTION 272**

DRAG DROP - (Topic 4)

You have a web app named App1 that is hosted on multiple servers. App1 uses Application Insights in Azure Monitor.

You need to compare the dairy CPU usage from the last week for all servers.

How should you complete the query? To answer, drag the appropriate values to the correct targets. Each value may be used once, more than once, or not at all.

You may need to drag the split bar between panes or scroll to view content

NOTE: Each correct selection is worth one point.



The screenshot shows the Azure Monitor query editor. On the left, under 'Values', there is a list of items: 'bin(timestamp,id)', 'bin(timestamp,1h)', 'project timechart', 'render chart', and 'render timechart'. On the right, under 'Answer Area', there is a query editor with the following code:

```
...
performanceCounters
| where counter == "% Processor Time"
| where timestamp >= ago(7d)
| summarize avg(value) by cloud_RoleInstance,
| 
```

There are two empty text boxes for dragging values into the query. The first box is after 'cloud\_RoleInstance,' and the second box is at the end of the line.

A. Mastered

B. Not Mastered

**Answer:** A

**Explanation:**

<https://docs.microsoft.com/en-us/azure/azure-monitor/app/performance-counters>

**NEW QUESTION 273**

- (Topic 4)

You manage a project by using Azure Boards. You manage the project code by using GitHub.

You have three work items that have IDs of 456. 457. and 458.

You need to create a pull request that will be linked to all the work items. The solution must set the state of work item 456 to done.

What should you add to the commit message?

A)

Fixes #456, #457, #458

B)

Fixes #AB456, #AB457, #AB458

C)

#456, #457, #458  
Completed #456

D)



#AB456, #AB457, #AB458

- A. Option A
- B. Option B
- C. Option C
- D. Option D

**Answer:** D

#### NEW QUESTION 278

- (Topic 4)

You are building a Microsoft ASP.NET application that requires authentication.

You need to authenticate users by using Azure Active Directory (Azure AD). What should you do first?

- A. Create a membership database in an Azure SQL database.
- B. Assign an enterprise application to users and groups.
- C. Create an app registration in Azure AD.
- D. Configure the application to use a SAML endpoint.
- E. Create a new OAuth token from the application.

**Answer:** C

#### Explanation:

Register your application to use Azure Active Directory. Registering the application means that your developers can use Azure AD to authenticate users and request access to user resources such as email, calendar, and documents.

Reference:

<https://docs.microsoft.com/en-us/azure/active-directory/manage-apps/developer-guidance-for-integrating-applications>

<https://docs.microsoft.com/en-us/azure/active-directory/develop/quickstart-v2-aspnet-webapp>

#### NEW QUESTION 279

- (Topic 4)

You have an Azure DevOps organization named Contoso and an Azure DevOps project named Project1.

You plan to use Microsoft-hosted agents to build container images that will host full Microsoft .NET Framework apps in a YAML pipeline in Project1.

What are two possible virtual machine images that you can use for the Microsoft-hosted agent pool? Each

correct answer presents a complete solution. NOTE: Each correct selection is worth one point.

- A. vs2017-win2016
- B. ubuntu-16.04
- C. win1803
- D. macOS-10.13
- E. vs.2015-win2012r2

**Answer:** AE

#### Explanation:

<https://github.com/microsoft/azure-pipelines-image-generation/blob/d80f81d6c98f8ce2c74b034309bb774ea8d31cfb/images/win/Vs2015-Server2012R2-Readme.md>

<https://github.com/actions/virtual-environments/blob/master/images/win/Windows2016-Readme.md>

#### NEW QUESTION 283

DRAG DROP - (Topic 4)

You are planning projects for three customers. Each customer's preferred process for work items is shown in the following table.

| Customer name        | Preferred process  |
|----------------------|--|
| Litware, Inc.        | Track product backlog items (PBIs) and bugs on the Kanban board. Break the PBIs down into tasks on the task board. |
| Contoso, Ltd.        | Track user stories and bugs on the Kanban board. Track the bugs and tasks on the task board.                       |
| A. Datum Corporation | Track requirements, change requests, risks, and reviews.   |

The customers all plan to use Azure DevOps for work item management.

Which work item process should you use for each customer? To answer, drag the appropriate work item process to the correct customers. Each work item process may be used once, more than once, or not at all. You may need to drag the split bar between panes or scroll to view content.

NOTE: Each correct selection is worth one point.

| Processes | Answer Area |
|-----------|-------------|
| Agile     | Litware     |
| CMMI      | Contoso:    |
| Scrum     | A. Datum:   |
| XP        |             |

- A. Mastered
- B. Not Mastered

**Answer:** A

**Explanation:**

Box 1: Scrum

Choose Scrum when your team practices Scrum. This process works great if you want to track product backlog items (PBIs) and bugs on the Kanban board, or break PBIs and bugs down into tasks on the taskboard.

Box 2: Agile

Choose Agile when your team uses Agile planning methods, including Scrum, and tracks development and test activities separately. This process works great if you want to track user stories and (optionally) bugs on the Kanban board, or track bugs and tasks on the taskboard.

Box 3: CMMI

Choose CMMI when your team follows more formal project methods that require a framework for process improvement and an auditable record of decisions. With this process, you can track requirements, change requests, risks, and reviews.

**NEW QUESTION 286**

DRAG DROP - (Topic 4)

You are building an application that has the following assets:

- ? Source code
- ? Logs from automated tests and builds
- ? Large and frequently updated binary assets
- ? A common library used by multiple applications

Where should you store each asset? To answer, drag the appropriate Azure services to the correct assets. Each service may be used once. You may need to drag the split bar between panes or scroll to view content.

NOTE: Each correct selection is worth one point.

| Azure Services   | Answer Area   |
|------------------|---|
| Azure Artifacts  | Source code: Azure Service                                    |
| Azure Pipelines  | A common library used by multiple applications: Azure Service |
| Azure Repos      | Logs from automated tests and builds: Azure Service           |
| Azure Storage    | Large and frequently updated binary assets: Azure Service     |
| Azure Test Plans |   |

- A. Mastered
- B. Not Mastered

**Answer:** A

**Explanation:**

Box 1: Azure Repos Box 2: Azure Artifacts

Use Azure Artifacts to create, host, and share packages with your team.

Box 3: Azure Pipelines

In the pipeline view you can see all the stages and associated tests. The view provides a summary of the test results

Box 4: Azure Storage

**NEW QUESTION 290**

- (Topic 4)

You are automating the testing process for your company. You need to automate UI testing of a web application. Which framework should you use?

- A. JaCoco
- B. Playwright
- C. Xamarin.UITest
- D. Microsoft.CodeAnalysis

Answer: B

#### Explanation:

Performing user interface (UI) testing as part of the release pipeline is a great way of detecting unexpected changes, and need not be difficult. Selenium can be used to test your website during a continuous deployment release and test automation.

References:

<https://docs.microsoft.com/en-us/azure/devops/pipelines/test/continuous-test-selenium?view=azure-devops>

#### NEW QUESTION 294

SIMULATION - (Topic 4)

You need to ensure that an Azure web app named az400-9940427-main supports rolling upgrades. The solution must ensure that only 10 percent of users who connect to az400- 9940427-main use update versions of the app.

The solution must minimize administrative effort.

To complete this task, sign in to the Microsoft Azure portal.

A. Mastered

B. Not Mastered

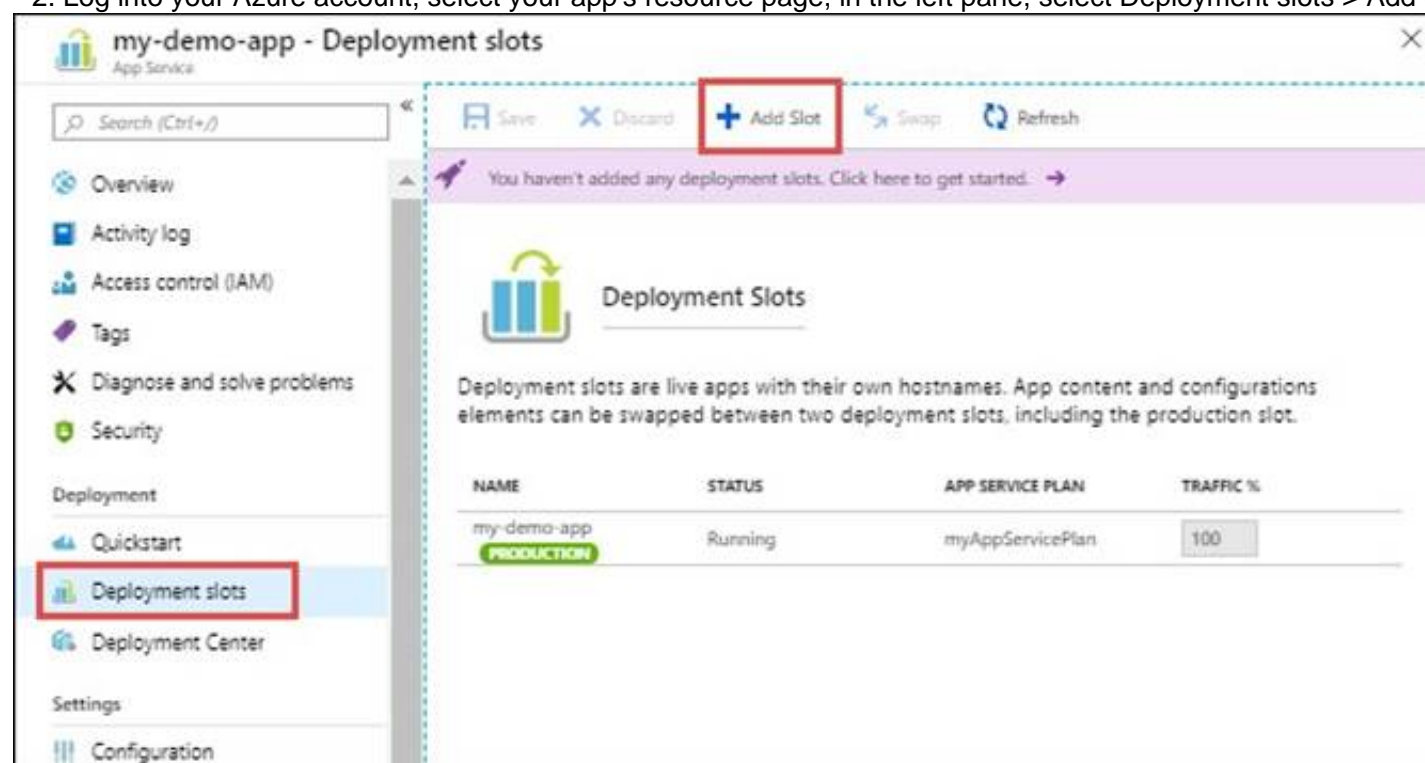
Answer: A

#### Explanation:

Set up staging environments in Azure App Service

\* 1. Open Microsoft Azure Portal

\* 2. Log into your Azure account, select your app's resource page, in the left pane, select Deployment slots > Add Slot.



\* 3. In the Add a slot dialog box, give the slot a name, and select whether to clone an app configuration from another deployment slot. Select Add to continue.

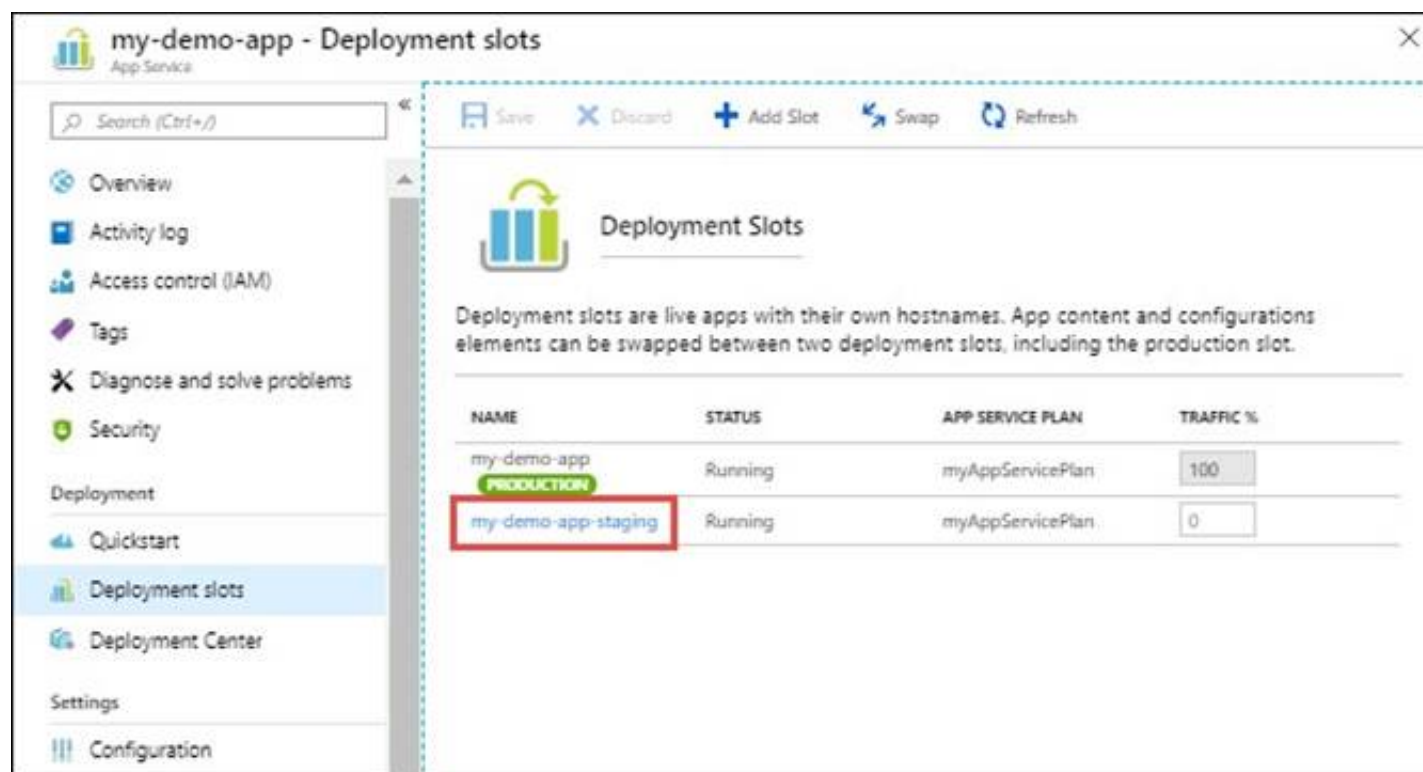
Add a slot

Name

Clone settings from:

\* 4. After the slot is added, select Close to close the dialog box. The new slot is now shown on the Deployment slots page. By default, Traffic % is set to 0 for the new slot, with all customer traffic routed to the production slot.

\* 5. Select the new deployment slot to open that slot's resource page.



\* 6. Change TRAFFIC % to 10 References:

<https://docs.microsoft.com/en-us/azure/app-service/deploy-staging-slots>

### NEW QUESTION 299

DRAG DROP - (Topic 4)

You need to recommend project metrics for dashboards in Azure DevOps.

Which chart widgets should you recommend for each metric? To answer, drag the appropriate chart widgets to the correct metrics. Each chart widget may be used once, more than once, or not at all. You may need to drag the split bar between panes or scroll to view content.

NOTE: Each correct selection is worth one point.

|            |   |  |
|------------|---|--|
| Burndown   | The elapsed time from the creation of work items to their completion: |  |
| Cycle Time |   |  |
| Lead Time  | The elapsed time to complete work items once they are active:         |  |
| Velocity   | The remaining work:   |  |

- A. Mastered
- B. Not Mastered

**Answer: A**

#### Explanation:

Graphical user interface, text, application, chat or text message Description automatically generated

Box 1: Lead time

Lead time measures the total time elapsed from the creation of work items to their completion.

Box 2: Cycle time

Cycle time measures the time it takes for your team to complete work items once they begin actively working on them.

Box 3: Burn down

Burn down charts focus on remaining work within a specific time period.

### NEW QUESTION 301

- (Topic 4)

You use GitHub for source control and project-related discussions.

You receive a notification when an entry is made to any team discussion.

You need to ensure that you receive email notifications only for discussions in which you commented or in which you are mentioned.

Which two Notifications settings should you clear? Each correct answer presents part of the solution.

NOTE: Each correct selection is worth one point.

- A. Participating
- B. Automatically watch repositories
- C. Automatically watch teams
- D. Watching

**Answer: BD**

### NEW QUESTION 303

- (Topic 4)

You plan to publish build artifacts by using an Azure pipeline.

You need to create an .artifactignore file that meets the following requirements:



- Includes all files in the build output folder and all subfolders
- Excludes files that have the .dll extension What should you include in the file?

- A. 

```
./**
!*.dll
```
- B. 

```
**/*
!*.dll
```
- C. 

```
*/**
*.dll
```
- D. 

```
**/*
#*.dll
```

- A. Option A  
B. Option B  
C. Option C  
D. Option D

**Answer:** B

#### NEW QUESTION 307

- (Topic 3)

You need !0 the merge the POC branch into the default branch. The solution must meet the technical requirements. Which command should you run?

- A. git push  
B. git merge -- allow-unrelated-histories  
C. git rebase  
D. git merge --squash

**Answer:** C

#### NEW QUESTION 312

- (Topic 3)

You need to configure Azure Pipelines to control App2 builds. Which authentication method should you use?

- A. Windows NTLM  
B. certificate  
C. SAML  
D. personal access token (PAT)

**Answer:** D

#### Explanation:

Scenario: Deploy App2 to an Azure virtual machine named VM1.

A personal access token (PAT) is used as an alternate password to authenticate into Azure DevOps.

Reference:

<https://docs.microsoft.com/en-us/azure/devops/organizations/accounts/use-personal-access-tokens-to-authenticate>

#### NEW QUESTION 314

- (Topic 3)

You need to perform the GitHub code migration. The solution must support the planned changes for the DevOps environment. What should you use?

- A. git clone  
B. GitHub Importer  
C. Import repository in Azure Repos  
D. git-tfs

**Answer:** A

#### Explanation:

Woodgrove Bank plans to implement the following changes to the DevOps environment:

? Migrate all the source code from TFS1 to GitHub.

The Git-TFS tool is a two-way bridge between Team Foundation Version Control and Git, and can be used to perform a migration.

Reference:

<https://docs.microsoft.com/en-us/devops/develop/git/migrate-from-tfvc-to-git>

NEW QUESTION 315

DRAG DROP - (Topic 3)

You need to replace the existing DevOps tools to support the planned changes.

What should you use? To answer, drag the appropriate tools to the correct targets. Each tool may be used once, more than once, or not at all. You may need to drag the split bar between panes or scroll to view content.

NOTE: Each correct selection is worth one point.

Tools

Azure Boards

Azure Artifacts

GitHub Actions

Azure Pipelines

Azure Test Plans

GitHub repositories

Answer Area

Trello:

Tool

Bamboo:

Tool

BitBucket:

Tool

- A. Mastered
- B. Not Mastered

Answer: A

Explanation:

Box 1: Azure Boards

Azure Boards can be used to track work with Kanban boards, backlogs, team dashboards, and custom reporting

You can create multiple Trello boards, which are spaces to store tasks (for different work contexts, or even private boards)

You can easily share Trello boards with another person.

Box 2: Azure Pipelines

You can use Bamboo to implement CI/CD (Continuous Integration and Continuous Delivery) for a simple Azure function app using Atlassian Bamboo. Bamboo does continuous delivery of the project from source code to deployment. It has stages including Build, Test and Deploy.

Software teams in every industry are upgrading their continuous delivery pipeline with Bamboo. Easy build import from popular open source tools, user and group import from JIRA, seamless integration with Bitbucket, and native support for Git, Hg, and SVN means you'll be building and deploying like a champ.

Box 3: GitHub repositories

Bitbucket can be used as the Git repository, but you can use any other Git repository (Like TFS Git) for source control of the code.

NEW QUESTION 320

HOTSPOT - (Topic 3)

You need to configure the alert for VM1. The solution must meet the technical requirements.

Which two settings should you configure? To answer, select the appropriate settings in the answer area.

NOTE: Each correct selection is worth one point.

Alert logic

Threshold ⓘ

Static

Dynamic

Operator ⓘ

Greater than

Aggregation type \* ⓘ

Average

Threshold value \* ⓘ

Condition preview

Whenever the average percentage cpu is greater than <logic undefined> %

Evaluated based on

Aggregation granularity (Period) \* ⓘ

5 minutes

Frequency of evaluation ⓘ

Every 1 Minute

- A. Mastered
- B. Not Mastered

Answer: A

Explanation:

Setting 1: Threshold value Set to 80 %

Scenario: An Azure Monitor alert for VM1 must be configured to meet the following requirements:

? Be triggered when average CPU usage exceeds 80 percent for 15 minutes.

? Calculate CPU usage averages once every minute.  
Setting 2: Aggregation granularity Set to 15 minutes.

NEW QUESTION 323

HOTSPOT - (Topic 2)

How should you configure the filters for the Project5 trigger? To answer, select the appropriate option in the answer area.

NOTE: Each correct selection is worth one point.

Set a

▼

/folder1.

branch filter to exclude

branch filter to include

path filter to exclude

path filter to include

Set a

▼

/.

branch filter to exclude

branch filter to include

path filter to exclude

path filter to include

@

- A. Mastered
- B. Not Mastered

Answer: A

Explanation:

Project5 will contain a Git repository in Azure Reports and a continuous integration trigger that will initiate a build in response to any change except for changes within /folder1 of the repository.

Scenario:  
References: <https://docs.microsoft.com/en-us/azure/devops/pipelines/build/triggers>

NEW QUESTION 325

DRAG DROP - (Topic 2)

You need to implement the code flow strategy for Project2 in Azure DevOps.

Which three actions should you perform in sequence? To answer, move the appropriate actions from the list of actions to the answer area and arrange in the correct order.

Actions

Answer Area

Create a fork

Create a branch

Add a build validation policy.

Add a build policy

Create a repository

Add an application access policy.

⬅

➡

⬆

⬆

- A. Mastered
- B. Not Mastered

Answer: A

Explanation:

Step 1: Create a repository

A Git repository, or repo, is a folder that you've told Git to help you track file changes in. You can have any number of repos on your computer, each stored in their own folder.

Step 2: Create a branch

Branch policies help teams protect their important branches of development. Policies enforce your team's code quality and change management standards.

Step 3: Add a build validation policy

When a build validation policy is enabled, a new build is queued when a new pull request is created or when changes are pushed to an existing pull request targeting this branch. The build policy then evaluates the results of the build to determine whether the pull request can be completed.

Scenario:

Implement a code flow strategy for Project2 that will: Enable Team2 to submit pull requests for Project2.

Enable Team2 to work independently on changes to a copy of Project2.

Ensure that any intermediary changes performed by Team2 on a copy of Project2 will be subject to the same restrictions as the ones defined in the build policy of Project2.

Project2 will use an automatic build policy. A small team of developers named Team2 will work independently on changes to the project. The Team2 members will not have permissions to Project2.

References: <https://docs.microsoft.com/en-us/azure/devops/repos/git/manage-your-branches>

### NEW QUESTION 328

DRAG DROP - (Topic 2)

You need to recommend a procedure to implement the build agent for Project1.

Which three actions should you recommend be performed in sequence? To answer, move the appropriate actions from the list of actions to the answer area and arrange them in the correct order.

| Actions  | Answer Area |
|--|-------------|
| Sign in to Azure DevOps by using an account that is assigned the Administrator service connection security role. |             |
| Install the Azure Pipelines agent on on-premises virtual machine.  |             |
| Create a personal access token in the Azure DevOps organization of Contoso.                                      |             |
| Install and register the Azure Pipelines agent on an Azure virtual machine.                                      |             |
| Sign in to Azure DevOps by using an account that is assigned the agent pool administrator role.                  |             |

A. Mastered

B. Not Mastered

**Answer:** A

**Explanation:**

Scenario:

Project 1 Project1 will provide support for incremental builds and third-party SDK components

Step 1: Sign in to Azure Develops by using an account that is assigned the Administrator service connection security role.

Note: Under Agent Phase, click Deploy Service Fabric Application. Click Docker Settings and then click Configure Docker settings. In Registry Credentials Source, select Azure Resource Manager Service Connection. Then select your Azure subscription.

Step 2: Create a personal access token..

A personal access token or PAT is required so that a machine can join the pool created with the Agent Pools (read, manage) scope.

Step 3: Install and register the Azure Pipelines agent on an Azure virtual machine.

By running a Azure Pipeline agent in the cluster, we make it possible to test any service, regardless of type.

References:

<https://docs.microsoft.com/en-us/azure/service-fabric/service-fabric-tutorial-deploy-container-app-with-cicd-vsts>

<https://mohitgoyal.co/2019/01/10/run-azure-devops-private-agents-in-kubernetes-clusters/>

### NEW QUESTION 330

- (Topic 2)

You need to implement Project4. What should you do first?

A. Add the FROM instruction in the Dockerfile file.

B. Add a Copy and Publish Build Artifacts task to the build pipeline.

C. Add a Docker task to the build pipeline.

D. Add the MAINTAINER instruction in the Dockerfile file.

**Answer:** C

**Explanation:**

Scenario: Implement Project4 and configure the project to push Docker images to Azure Container Registry.



|           |  |
|-----------|--|
| Project 4 | Project4 will provide support for a build pipeline that creates a Docker image and pushes the image to the Azure Container Registry. Project4 will use an existing Dockerfile. |
|-----------|--|

You use Azure Container Registry Tasks commands to quickly build, push, and run a Docker container image natively within Azure, showing how to offload your "inner-loop" development cycle to the cloud. ACR Tasks is a suite of features within Azure Container Registry to help you manage and modify container images across the container lifecycle.

References:

<https://docs.microsoft.com/en-us/azure/container-registry/container-registry-quickstart-task- cli>

### NEW QUESTION 333

HOTSPOT - (Topic 1)

HOTSPOT

You are using PowerShell to administer Azure Log Analytics workspaces. You need to list the available workspaces and their properties.

How should you complete the command? To answer, select the appropriate options in the answer area.

NOTE: Each correct selection is worth one point.

|                        |                    |   |
|------------------------|--------------------|---|
| Get-AzResource         | -ResourceGroupName | Microsoft.OperationalInsights/workspaces - ExpandProperties |
| Get-AzResourceGroup    | -ResourceId        |   |
| Get-AzResourceProvider | -ResourceType      |   |

- A. Mastered
- B. Not Mastered

Answer: A

#### Explanation:

Box 1: Get-AzResource

Use the following command to examine the access control mode for all workspaces in the subscription:

PowerShell

Get-Az Resource -Resource Type Microsoft. Operational Insights/workspaces -Expand Properties | for each {s.Name + ": " + \$\_.Properties.features.enableLogAccessUsingOnlyResourcePermissions Box 2: -Resource Type

### NEW QUESTION 337

HOTSPOT - (Topic 1)

Where should the build and release agents for the investment planning application suite run? To answer, select the appropriate options in the answer area.

NOTE: Each correct selection is worth one point.

Build agent: ▼

- A hosted service
- A source control system
- The developers' computers

Release agent: ▼

- A hosted service
- A source control system
- The developers' computers

- A. Mastered
- B. Not Mastered

Answer: A

#### Explanation:

Box 1: A source control system

A source control system, also called a version control system, allows developers to collaborate on code and track changes. Source control is an essential tool for multi- developer projects.

Box 2: A hosted service

To build and deploy Xcode apps or Xamarin.iOS projects, you'll need at least one macOS agent. If your pipelines are in Azure Pipelines and a Microsoft-hosted agent meets your needs, you can skip setting up a self-hosted macOS agent.

Scenario: The investment planning applications suite will include one multi-tier web application and two iOS mobile applications. One mobile application will be used by employees; the other will be used by customers.

References:

<https://docs.microsoft.com/en-us/azure/devops/pipelines/agents/v2-osx?view=azure- devops>

### NEW QUESTION 340

- (Topic 1)

You are using GitHub as a source code repository.

You create a client-side Git hook on the commit-msg event. The hook requires that each commit message contain a custom work item tag.

You need to make a commit that does not have a work item tag. Which git commit parameter should you use?

- A. --squash
- B. --no-verify
- C. --message "
- D. --no-post-rewrite

Answer: B

Explanation:

The commit-msg hook is invoked by git-commit and git-merge, and can be bypassed with the --no-verify option.  
Reference:  
<https://git-scm.com/docs/githooks>

NEW QUESTION 345

HOTSPOT - (Topic 1)  
HOTSPOT

You have an Azure virtual machine named VM1 that runs Linux.  
You plan to deploy the Desired State Configuration (DSC) extension to VM1. You need to grant the Log Analytics agent the appropriate directory permissions.  
How should you complete the command? To answer, select the appropriate options in the answer area.  
NOTE: Each correct selection is worth one point.

setfacl -m u:omsagent:

|     |      |
|-----|------|
|     |      |
| r   | /lib |
| X   | /etc |
| rx  | /tmp |
| rwX | /usr |

- A. Mastered
- B. Not Mastered

Answer: A

Explanation:

Box 1: rwX  
The Log Analytics agent for Linux runs as the omsagent user. To grant >write permission to the omsagent user, run the command setfacl -m u:omsagent:rwX /tmp.  
Box 2: /tmp  
Deploying DSC to a Linux node uses the /tmp folder.

NEW QUESTION 347

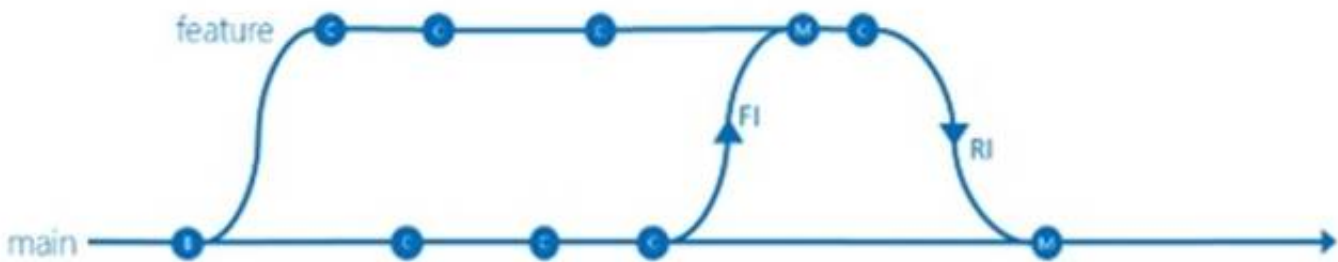
- (Topic 1)  
Which branching strategy should you recommend for the investment planning applications suite?

- A. release isolation
- B. main only
- C. development isolation
- D. feature isolation

Answer: D

Explanation:

Scenario: A branching strategy that supports developing new functionality in isolation must be used.  
Feature isolation is a special derivation of the development isolation, allowing you to branch one or more feature branches from main, as shown, or from your dev branches.



When you need to work on a particular feature, it might be a good idea to create a feature branch.

NEW QUESTION 351

- (Topic 1)  
What should you use to implement the code quality restriction on the release pipeline for the investment planning applications suite?

- A. a trigger
- B. a pre deployment approval
- C. a post-deployment approval
- D. a deployment gate

Answer: B

### NEW QUESTION 356

HOTSPOT - (Topic 1)

How should you configure the release retention policy for the investment planning depletions suite? To answer, select the appropriate options in the answer area.

NOTE: Each correct selection is worth one point.

Required secrets:

|                                   |
|-----------------------------------|
| Certificate                       |
| Personal access token             |
| Shared Access Authorization token |
| Username and password             |

Storage location:

|                                 |
|---------------------------------|
| Azure Data Lake                 |
| Azure Key Vault                 |
| Azure Storage with HTTP access  |
| Azure Storage with HTTPS access |

- A. Mastered
- B. Not Mastered

Answer: A

#### Explanation:

Every request made against a storage service must be authorized, unless the request is for a blob or container resource that has been made available for public or signed access. One option for authorizing a request is by using Shared Key.

Scenario: The mobile applications must be able to call the share pricing service of the existing retirement fund management system. Until the system is upgraded, the service will only support basic authentication over HTTPS.

The investment planning applications suite will include one multi-tier web application and two iOS mobile application. One mobile application will be used by employees; the other will be used by customers.

References: <https://docs.microsoft.com/en-us/rest/api/storageservices/authorize-with-shared-key>

### NEW QUESTION 361

DRAG DROP - (Topic 4)

You have an Azure Kubernetes Service (AKS) pod that hosts an app named App1.

You need to configure the AKS container to restart automatically if the container stops responding. The solution must check the status of App1 once every three seconds.

How should you complete the deployment? To answer, drag the appropriate values to the correct targets. Each value may be used once, more than once, or not at all. You may need to drag the split bar between panes or scroll to view content

NOTE: Each correct selection is worth one point.

| Values              | Answer Area                                       |
|---------------------|---|
| Always              | apiVersion: 2019-12-01                            |
| initialDelaySeconds | location: eastus                                  |
| livenessProbe       | name: App1  |
| Never               | properties:                                       |
| periodSeconds       | containers:                                       |
| readinessProbe      | - name: container1                                |
| successThreshold    | properties:                                       |
| Value               | image: mycompany/myimage:1.0.1                    |
|                     | ports: []   |
|                     | resources:  |
|                     | resources:  |
|                     | requests:   |
|                     | cpu: 1.0  |
|                     | memoryInGB: 1.5                                   |
|                     | httpGet:  |
|                     | path: /   |
|                     | port: 8080  |
|                     | timeoutSeconds: 1                                 |
|                     | osType: linux                                     |
|                     | restartPolicy:                                    |
|                     | tags: null  |
|                     | type: Microsoft.ContainerInstance/containerGroups |
|                     | ...   |

- A. Mastered
- B. Not Mastered

Answer: A

Explanation:

Values

Always

initialDelaySeconds

livenessProbe

Never

periodSeconds

readinessProbe

successThreshold

Value

Answer Area

```
apiVersion: 2019-12-01
location: eastus
name: App1
properties:
  containers:
    - name: container1
      properties:
        image: mycompany/myImage:1.0.1
        ports: []
        resources:
          resources:
            requests:
              cpu: 1.0
              memoryInGB: 1.5
              readinessProbe
                httpGet:
                  path: /
                  port: 8080
                  Value
                timeoutSeconds: 1
            osType: linux
            restartPolicy: periodSeconds
          tags: null
          type: Microsoft.ContainerInstance/containerGroups
          ...
```

NEW QUESTION 363

- (Topic 4)  
You have an Azure web app named webapp1 that uses the .NET Core runtime stack. You have an Azure Application Insights resource named AppInsight1. Webapp1 sends telemetry data to AppInsights1. You need to ensure that webapp1 sends the telemetry data at a fixed sampling rate. What should you do?

- A. From the code repository of webapp1, modify the ApplicationInsights.config file.
- B. From the code repository of webapp1, modify the Startup.cs file.
- C. From AppInsights1, modify the Usage and estimated costs settings.
- D. From AppInsights1, configure the Continuous export settings.

Answer: B

NEW QUESTION 366

HOTSPOT - (Topic 4)  
You use Get for source control.  
You need to optimize the performance of a repository. The solution must meet the following requirements:  
? Permanently remove all items referenced only in the ref log.  
? Remove history that is NOT in any current branch.  
How should you complete the command? To answer, select the appropriate options in the answer area.

git

gc

reflog

reset

stash

git

gc

init

reflog

reset

expire --expire-unreachable=now --all

--prune=

all

now

reset

true

- A. Mastered
- B. Not Mastered



Answer: A

Explanation:



### NEW QUESTION 367

- (Topic 4)

After you answer a question in this section, you will NOT be able to return to it. As a result, these questions will not appear in the review screen.

You use Azure Pipelines to build and test a React js application. You have a pipeline that has a single job.

You discover that installing JavaScript packages from npm takes approximately five minutes each time you run the pipeline.

You need to recommend a solution to reduce the pipeline execution time.

Solution: You recommend defining a container job that uses a custom container that has the JavaScript packages preinstalled.

Does this meet the goal?

- A. Yes
- B. No

Answer: B

Explanation:

Instead enable pipeline caching.

Note:

npm-cache is a command line utility that caches dependencies installed via npm, bower, jspm and composer.

It is useful for build processes that run [npm|bower|composer|jspm] install every time as part of their build process. Since dependencies don't change often, this often means slower build times. npm-cache helps alleviate this problem by caching previously installed dependencies on the build machine.

Reference: <https://www.npmjs.com/package/npm-cache>

### NEW QUESTION 368

.....

## THANKS FOR TRYING THE DEMO OF OUR PRODUCT

Visit Our Site to Purchase the Full Set of Actual AZ-400 Exam Questions With Answers.

We Also Provide Practice Exam Software That Simulates Real Exam Environment And Has Many Self-Assessment Features. Order the AZ-400 Product From:

<https://www.2passeasy.com/dumps/AZ-400/>

## Money Back Guarantee

### **AZ-400 Practice Exam Features:**

- \* AZ-400 Questions and Answers Updated Frequently
- \* AZ-400 Practice Questions Verified by Expert Senior Certified Staff
- \* AZ-400 Most Realistic Questions that Guarantee you a Pass on Your FirstTry
- \* AZ-400 Practice Test Questions in Multiple Choice Formats and Updatesfor 1 Year