



PMI

Exam Questions CAPM

Certified Associate in Project Management (PMI-100)

NEW QUESTION 1

- (Exam Topic 3)

A work package has been scheduled to cost \$1,000 to complete and was to be finished today. As of today, the actual expenditure is \$1,200 and approximately half of the work has been completed. What is the cost variance?

- A. -700
- B. -200
- C. 200
- D. 500

Answer: A

NEW QUESTION 2

- (Exam Topic 3)

Change requests are an output from which Project Integration Management process?

- A. Direct and Manage Project Execution
- B. Develop Project Management Plan
- C. Close Project
- D. Develop Project Charter

Answer: A

NEW QUESTION 3

- (Exam Topic 3)

Which type of analysis is used to examine project results through time to determine if performance is improving or deteriorating?

- A. Control chart
- B. Earned value
- C. Variance
- D. Trend

Answer: D

NEW QUESTION 4

- (Exam Topic 3)

Which of the following processes are part of the Project Integration Management Knowledge Area?

- A. Develop Project Management Plan, Collect Requirements, Create WBS
- B. Develop Project Management Plan, Control Scope, Develop Schedule
- C. Develop Project Charter, Define Scope, Estimate Costs
- D. Develop Project Charter, Direct and Manage Project Execution, Close Project or Phase

Answer: D

NEW QUESTION 5

- (Exam Topic 3)

An input required in Define Scope is an organizational:

- A. structure.
- B. process asset.
- C. matrix.
- D. breakdown structure.

Answer: B

NEW QUESTION 6

- (Exam Topic 3)

Which of the following involves making information available to project stakeholders in a timely manner?

- A. Plan Communications
- B. Performance reporting
- C. Project status reports
- D. Distribute Information

Answer: D

NEW QUESTION 7

- (Exam Topic 3)

Which of the following is an input to Direct and Manage Project Execution?

- A. Requested changes
- B. Approved change requests
- C. Work performance information
- D. Implemented defect repair

Answer: B

NEW QUESTION 8

- (Exam Topic 3)

Which enterprise environmental factors are considered during Estimate Costs?

- A. Market conditions and published commercial information
- B. Company structure and market conditions
- C. Commercial information and company structure
- D. Existing human resources and market conditions

Answer: A

NEW QUESTION 9

- (Exam Topic 3)

Which type of managers do composite organizations involve?

- A. Functional managers and manager of project managers
- B. Functional managers only
- C. Project managers only
- D. Technical managers and project managers

Answer: A

NEW QUESTION 10

- (Exam Topic 3)

An input to the Create WBS process is a:

- A. project charter.
- B. stakeholder register.
- C. project scope statement.
- D. requirements traceability matrix.

Answer: C

NEW QUESTION 10

- (Exam Topic 3)

Which type of contract is most commonly used by buying organizations because the price for goods is set at the outset and is not subject to change unless the scope of work changes?

- A. Fixed Price with Economic Price Adjustments Contract (FP-EPA)
- B. Cost-Reimbursable Contract (CR)
- C. Firm-Fixed -Price Contract (FFP)
- D. Fixed-Price-Incentive-Fee Contract (FPIF)

Answer: C

NEW QUESTION 15

- (Exam Topic 3)

Which estimating technique uses the actual costs of previous similar projects as a basis for estimating the costs of the current project?

- A. Analogous
- B. Parametric
- C. Bottom-up
- D. Top-down

Answer: A

NEW QUESTION 16

- (Exam Topic 3)

At which point of the project is the uncertainty the highest and the risk of failing the greatest?

- A. Final phase of the project
- B. Start of the project
- C. End of the project
- D. Midpoint of the project

Answer: B

NEW QUESTION 18

- (Exam Topic 3)

The scope management plan is a subsidiary of which project document?

- A. Schedule management plan
- B. Project management plan

- C. Quality management plan
- D. Resource management plan

Answer: B

NEW QUESTION 19

- (Exam Topic 3)

Which is the Define Scope technique used to generate different approaches to execute and perform the work of the project?

- A. Build v
- B. buy
- C. Expert judgment
- D. Alternatives identification
- E. Product analysis

Answer: C

NEW QUESTION 24

- (Exam Topic 3)

The approaches, tools, and data sources that will be used to perform risk management on a project are determined by the:

- A. Methodology
- B. Risk category
- C. Risk attitude
- D. Assumption analysis

Answer: A

NEW QUESTION 26

- (Exam Topic 3)

What is the term assigned to products or services having the same functional use but different technical characteristics?

- A. Scope
- B. Quality
- C. Specification
- D. Grade

Answer: D

NEW QUESTION 27

- (Exam Topic 3)

Conflict should be best addressed in which manner?

- A. Early, in private, using a direct, collaborative approach
- B. Early, in public, using an indirect, collaborative approach
- C. Early, in private, using an indirect, cooperative approach
- D. As late as possible, in public, using a direct, confrontational approach

Answer: A

NEW QUESTION 31

- (Exam Topic 3)

Most experienced project managers know that:

- A. every project requires the use of all processes in the PMBOK® Guide.
- B. there is no single way to manage a project.
- C. project management techniques are risk free.
- D. there is only one way to manage projects successfully.

Answer: B

NEW QUESTION 35

- (Exam Topic 3)

While implementing an approved change, a critical defect was introduced. Removing the defect will delay the product delivery. What is the MOST appropriate approach to managing this situation?

- A. Utilize the change control process.
- B. Crash the schedule to fix the defect.
- C. Leave the defect in and work around it.
- D. Fast-track the remaining development.

Answer: A

NEW QUESTION 36

- (Exam Topic 3)

The project manager notes that stakeholders are aware of the project and potential impacts and are actively engaged in ensuring that the project is a success. The engagement level of the stakeholders should be classified as:

- A. Supportive
- B. Leading
- C. Neutral
- D. Resistant

Answer: B

NEW QUESTION 41

- (Exam Topic 3)

Organizations perceive risks as:

- A. events that will inevitably impact project and organizational objectives.
- B. the effect of uncertainty on their project and organizational objectives.
- C. events which could have a negative impact on project and organizational objectives.
- D. the negative impact of undesired events on their project and organizational objectives.

Answer: B

NEW QUESTION 46

- (Exam Topic 3)

Cost baseline is an output of which of the following processes?

- A. Control Costs
- B. Determine Budget
- C. Estimate Costs
- D. Estimate Activity Resources

Answer: B

NEW QUESTION 47

- (Exam Topic 3)

Which of the seven basic quality tools is especially useful for gathering attributes data while performing inspections to identify defects?

- A. Histograms
- B. Scatter diagrams
- C. Flowcharts
- D. Checksheets

Answer: D

NEW QUESTION 50

- (Exam Topic 3)

As part of a mid-project evaluation, the project sponsor has asked for a forecast of the total project cost. What should be used to calculate the forecast?

- A. BAC
- B. EAC
- C. ETC
- D. WBS

Answer: B

NEW QUESTION 52

- (Exam Topic 3)

Definitions of probability and impact, revised stakeholder tolerances, and tracking are components of which subsidiary plan?

- A. Cost management plan
- B. Quality management plan
- C. Communications management plan
- D. Risk management plan

Answer: D

NEW QUESTION 56

- (Exam Topic 3)

When an activity cannot be estimated with a reasonable degree of confidence, the work within the activity is decomposed into more detail using which type of estimating?

- A. Bottom-up
- B. Parametric
- C. Analogous
- D. Three-point

Answer: A

NEW QUESTION 57

- (Exam Topic 3)

A measure of cost performance that is required to be achieved with the remaining resources in order to meet a specified management goal and is expressed as the ratio of the cost needed for finishing the outstanding work to the remaining budget is known as the:

- A. budget at completion (BAC)
- B. earned value management (EVM)
- C. to-complete performance index
- D. cost performance index

Answer: C

NEW QUESTION 60

- (Exam Topic 3)

An input of the Control Schedule process is the:

- A. resource calendar.
- B. activity list.
- C. risk management plan.
- D. organizational process assets.

Answer: D

NEW QUESTION 64

- (Exam Topic 3)

Which illustrates the connection between work that needs to be done and its project team members?

- A. Work breakdown structure (WBS)
- B. Network diagrams
- C. Staffing management plan
- D. Responsibility assignment matrix (RAM)

Answer: D

NEW QUESTION 68

- (Exam Topic 3)

What type of project structure is a hierarchically organized depiction of the resources by type?

- A. Organizational breakdown structure (OBS)
- B. Resource breakdown structure (RBS)
- C. Work breakdown structure (WBS)
- D. Project breakdown structure (PBS)

Answer: B

NEW QUESTION 72

- (Exam Topic 3)

Which tool is used to develop technical details within the project management plan?

- A. Expert judgment
- B. Project management methodology
- C. Project management information system (PMIS)
- D. Project selection methods

Answer: A

NEW QUESTION 77

- (Exam Topic 3)

A change log for communications can be used to communicate to the appropriate stakeholders that there are changes:

- A. To the project management plan.
- B. To the risk register.
- C. In the scope verification processes.
- D. And their impact to the project in terms of time, cost, and risk.

Answer: D

NEW QUESTION 81

- (Exam Topic 3)

Which tool or technique of Plan Quality involves comparing actual or planned practices to those of other projects to generate ideas for improvement and provide a basis by which to measure performance?

- A. Histogram
- B. Quality audits
- C. Benchmarking
- D. Performance measurement analysis

Answer: C

NEW QUESTION 82

- (Exam Topic 3)

Assigned risk ratings are based upon:

- A. Root cause analysis.
- B. Risk probability and impact assessment.
- C. Expert judgment.
- D. Revised stakeholders' tolerances.

Answer: B

NEW QUESTION 86

- (Exam Topic 3)

Which of the following is a tool and technique for Estimate Activity Durations?

- A. Parametric estimating
- B. Monte Carlo analysis
- C. Alternatives analysis
- D. Bottom-up estimating

Answer: A

NEW QUESTION 90

- (Exam Topic 3)

Which process uses occurrence probability and impact on project objectives to assess the priority of identified risks?

- A. Identify Risks
- B. Perform Qualitative Risk Analysis
- C. Plan Risk Management
- D. Perform Quantitative Risk Analysis

Answer: B

NEW QUESTION 92

- (Exam Topic 3)

Which Project Management Process Group includes Collect Requirements, Define Activities, Sequence Activities, Perform Qualitative Risk Analysis, and Perform Quantitative Risk Analysis?

- A. Initiating
- B. Monitoring and Controlling
- C. Planning
- D. Closing

Answer: C

NEW QUESTION 94

- (Exam Topic 3)

Outputs of the Control Communications process include:

- A. expert judgment and change requests
- B. work performance information and change requests
- C. project management plan updates and work performance information
- D. issue logs and organizational process assets updates

Answer: B

NEW QUESTION 99

- (Exam Topic 3)

The creation of an internet site to engage stakeholders on a project is an example of which type of communication?

- A. Push
- B. Pull
- C. Interactive
- D. Iterative

Answer: B

NEW QUESTION 101

- (Exam Topic 3)

Plan Risk Management is the process of defining how to:

- A. Communicate identified risks to the project stakeholders.
- B. Conduct risk management activities for a project.

- C. Analyze the impact a specific risk may have on the project.
- D. Address unexpected risks that may occur during a project.

Answer: B

NEW QUESTION 106

- (Exam Topic 3)

Who, along with the project manager, is supposed to direct the performance of the planned project activities and manage the various technical and organizational interfaces that exist within the project?

- A. The customer and functional managers
- B. The risk owners and stakeholders
- C. The sponsors and stakeholders
- D. The project management team

Answer: D

NEW QUESTION 109

- (Exam Topic 3)

The scope of a project cannot be defined without some basic understanding of how to create the specified:

- A. objectives
- B. schedule
- C. product
- D. approach

Answer: C

NEW QUESTION 110

- (Exam Topic 3)

An output of Control Schedule is:

- A. A project schedule network diagram
- B. A schedule management plan
- C. Schedule data
- D. Schedule forecasts

Answer: D

NEW QUESTION 115

- (Exam Topic 3)

Which tool and technique identifies inefficient and ineffective policies, processes, and procedures?

- A. Scope audits
- B. Scope reviews
- C. Quality audits
- D. Control chart

Answer: C

NEW QUESTION 119

- (Exam Topic 3)

The links between the processes in the Process Groups are often:

- A. Intuitive
- B. Iterative
- C. Measured
- D. Monitored

Answer: B

NEW QUESTION 122

- (Exam Topic 3)

A project manager seeking insight on previous stakeholder management plans and their effectiveness should evaluate:

- A. Historical information and the lessons-learned database.
- B. Historical information and the stakeholder register.
- C. Organizational process assets and the lessons-learned database.
- D. Project documents and historical information.

Answer: A

NEW QUESTION 123

- (Exam Topic 3)

When is a project finished?

- A. After verbal acceptance of the customer or sponsor
- B. After lessons learned have been documented in contract closure
- C. When the project objectives have been met
- D. After resources have been released

Answer: C

NEW QUESTION 124

- (Exam Topic 3)

The formal and informal interaction with others in an organization industry, or professional environment is known as:

- A. negotiation
- B. organizational theory
- C. meeting
- D. networking

Answer: D

NEW QUESTION 126

- (Exam Topic 3)

The Verify Scope process is primarily concerned with:

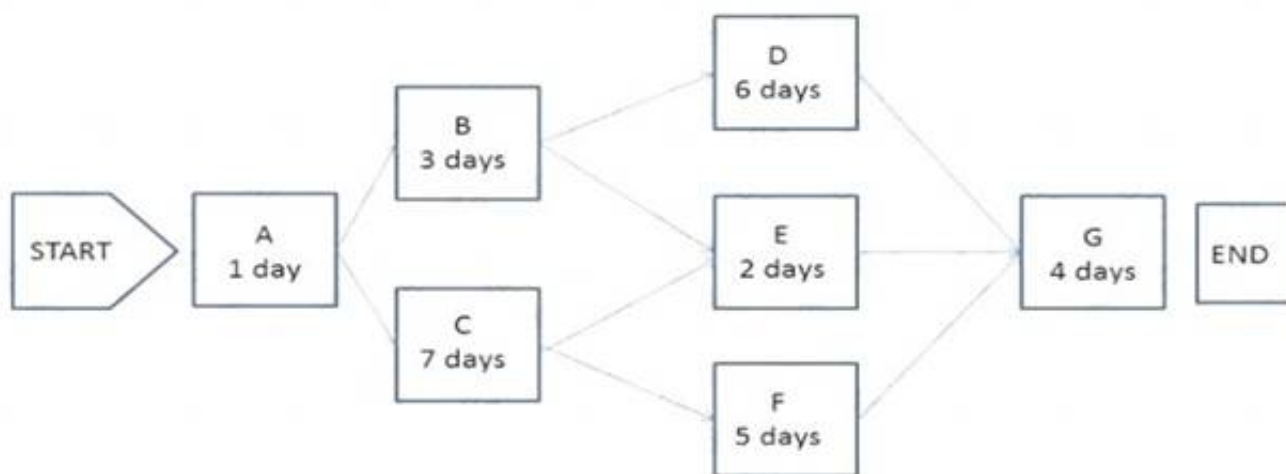
- A. formalizing acceptance of the completed project deliverables.
- B. accuracy of the work deliverables.
- C. formalizing approval of the scope statement.
- D. accuracy of the work breakdown structure (WBS).

Answer: A

NEW QUESTION 127

- (Exam Topic 2)

The following is a network diagram for a project.



The total float for the project is how many days?

- A. 3
- B. 5
- C. 7
- D. 9

Answer: A

NEW QUESTION 128

- (Exam Topic 2)

An example of a group decision-making technique is:

- A. nominal group technique
- B. majority
- C. affinity diagram
- D. multi-criteria decision analysis

Answer: B

NEW QUESTION 133

- (Exam Topic 2)

The scope management plan and scope baseline are contained in:

- A. organizational process assets
- B. a requirements traceability matrix
- C. the project charter
- D. the project management plan

Answer: D

NEW QUESTION 135

- (Exam Topic 2)

Which output is the approved version of the time-phased project budget?

- A. Resource calendar
- B. Scope baseline
- C. Trend analysis
- D. Cost baseline

Answer: D

NEW QUESTION 137

- (Exam Topic 2)

Which Control Stakeholder Engagement tool or technique allows the project manager to consolidate and facilitate distribution of reports?

- A. Information management systems
- B. Work performance reports
- C. Stakeholder analysis
- D. Data gathering and representation

Answer: A

NEW QUESTION 141

- (Exam Topic 2)

A disadvantage associated with virtual teams is that they:

- A. Require communication technology that is not readily available.
- B. Create difficulties when including people with disabilities.
- C. Often cannot accommodate teams that work different hours or shifts.
- D. Create the possibility for misunderstandings to arise.

Answer: D

NEW QUESTION 145

- (Exam Topic 2)

The degree, amount, or volume of risk that an organization or individual will withstand is known as its risk:

- A. Analysis
- B. Appetite
- C. Tolerance
- D. Response

Answer: C

NEW QUESTION 149

- (Exam Topic 2)

A project requires a component with well-understood specifications. Performance targets are established at the outset, and the final contract price is determined after completion of all work based on the seller's performance. The most appropriate agreement with the supplier is:

- A. Cost Plus Incentive Fee (CPIF).
- B. Fixed Price Incentive Fee (FPIF).
- C. Cost Plus Award Fee (CPAF).
- D. Fixed Price with Economic Price Adjustment (FP-EPA).

Answer: B

NEW QUESTION 154

- (Exam Topic 2)

Grouping the stakeholders based on their level of authority and their level of concern regarding project outcomes describes which classification model for stakeholder analysis?

- A. Influence/impact grid
- B. Power/influence grid
- C. Power/interest grid
- D. Salience model

Answer: C

NEW QUESTION 159

- (Exam Topic 2)

The most appropriate project life cycle model for an environment with a high level of change and extensive stakeholder involvement in projects is:

- A. adaptive
- B. reflexive
- C. predictive
- D. iterative

Answer: A

NEW QUESTION 161

- (Exam Topic 2)

A project's purpose or justification, measurable project objectives and related success criteria, a summary milestone schedule, and a summary budget are all components of which document?

- A. Work breakdown structure
- B. Requirements document
- C. Project charter
- D. Project management plan

Answer: C

NEW QUESTION 165

- (Exam Topic 2)

When closing a project or phase, part of the process may require the use of which type of analysis?

- A. Reserve analysis
- B. Regression analysis
- C. Document analysis
- D. Product analysis

Answer: B

NEW QUESTION 169

- (Exam Topic 2)

Which action is included in the Control Costs process?

- A. Identify how the project costs will be planned, structured, and controlled
- B. Determine policies, objectives, and responsibilities to satisfy stakeholder needs
- C. Develop an approximation of the monetary resources needed to complete project activities
- D. Monitor cost performance to isolate and understand variances from the approved cost baseline

Answer: D

NEW QUESTION 174

- (Exam Topic 2)

A graphic display of project team members and their reporting relationships is known as a:

- A. Resource calendar.
- B. Project organization chart.
- C. Resource breakdown structure (RBS).
- D. Responsibility assignment matrix (RAM).

Answer: B

NEW QUESTION 175

- (Exam Topic 2)

A project team attempts to produce a deliverable and finds that they have neither the expertise nor the time to complete the deliverable in a timely manner. This issue could have been avoided if they had created and followed a:

- A. risk management plan
- B. human resource management plan
- C. scope management plan
- D. procurement management plan

Answer: D

NEW QUESTION 179

- (Exam Topic 2)

Which document in the project management plan can be updated in the Plan Procurement Management process?

- A. Budget estimates
- B. Risk matrix
- C. Requirements documentation
- D. Procurement documents

Answer: C

NEW QUESTION 180

- (Exam Topic 2)

Perform Integrated Change Control is the process of:

- A. Reviewing, approving, and managing all change requests

- B. Facilitating change management, manuals, or automation tools
- C. Comparing actual results with planned results in order to expand or change a project
- D. Documenting changes according to the change control system by the change control board

Answer: A

NEW QUESTION 182

- (Exam Topic 2)

Which process is conducted from project inception through completion and is ultimately the responsibility of the project manager?

- A. Control Quality
- B. Monitor and Control Project Work
- C. Control Scope
- D. Perform Integrated Change Control

Answer: D

NEW QUESTION 186

- (Exam Topic 2)

Which type of dependency used in the Sequence Activities process is sometimes referred to as preferred logic, preferential logic, or soft logic?

- A. Internal
- B. External
- C. Discretionary
- D. Mandatory

Answer: C

NEW QUESTION 187

- (Exam Topic 2)

Tools and techniques used in Direct and Manage Project Work include:

- A. Process analysis and expert judgment
- B. Analytical techniques and a project management information system
- C. Performance reviews and meetings
- D. Expert judgment and meetings

Answer: D

NEW QUESTION 188

- (Exam Topic 2)

Variance and trend analysis is a tool and technique used in which process?

- A. Perform Qualitative Risk Analysis
- B. Perform Quantitative Risk Analysis
- C. Control Risks
- D. Plan Risk Responses

Answer: C

NEW QUESTION 192

- (Exam Topic 2)

While processes in the Planning Process Group seek to collect feedback and define project documents to guide project work, organizational procedures dictate when the project planning:

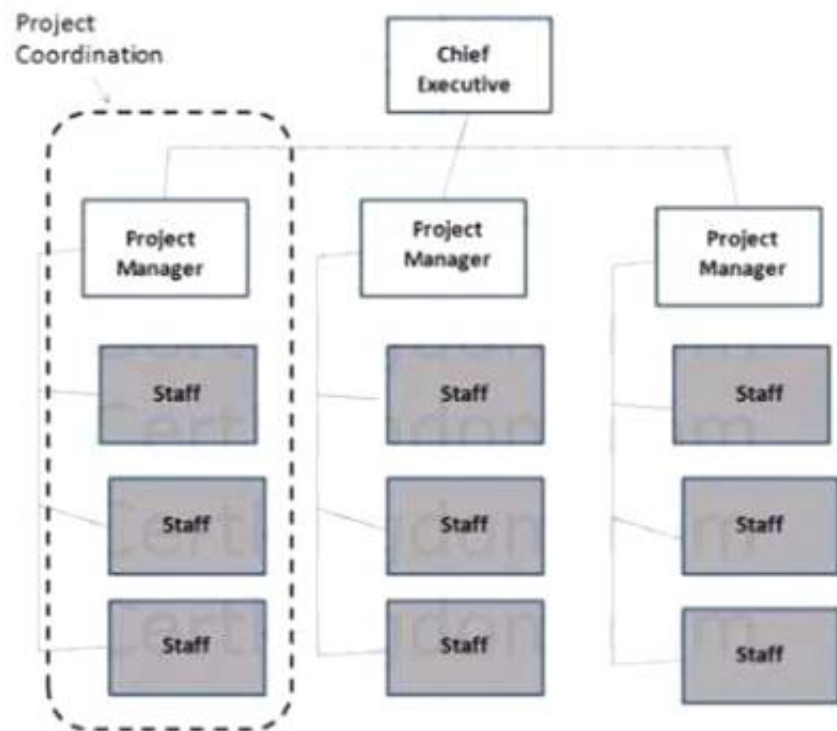
- A. ends.
- B. begins.
- C. delays.
- D. deviates.

Answer: A

NEW QUESTION 193

- (Exam Topic 2)

Which type of organizational structure is displayed in the diagram provided?



- A. Balanced matrix
- B. Projectized
- C. Strong matrix
- D. Functional

Answer: B

NEW QUESTION 197

- (Exam Topic 2)

The risk response strategy in which the project team acts to reduce the probability of occurrence or impact of a risk is known as:

- A. exploit
- B. avoid
- C. mitigate
- D. share

Answer: C

NEW QUESTION 202

- (Exam Topic 2)

Whose approval may be required for change requests after change control board (CCB) approval?

- A. Functional managers
- B. Business partners
- C. Customers or sponsors
- D. Subject matter experts

Answer: C

NEW QUESTION 203

- (Exam Topic 2)

Which is an enterprise environmental factor?

- A. Marketplace conditions
- B. Policies and procedures
- C. Project files from previous projects
- D. Lessons learned from previous projects

Answer: A

NEW QUESTION 206

- (Exam Topic 2)

Requirements documentation will typically contain at least:

- A. Stakeholder requirements, staffing requirements, and transition requirements.
- B. Business requirements, the stakeholder register, and functional requirements.
- C. Stakeholder impact, budget requirements, and communications requirements.
- D. Business objectives, stakeholder impact, and functional requirements.

Answer: D

NEW QUESTION 207

- (Exam Topic 2)

The purpose of developing a project scope management plan is to:

- A. Manage the timely completion of the project.
- B. Ensure that the project includes all of the work required.
- C. Make sure the project will satisfy the needs for which it was begun.
- D. Reduce the risk of negative events in the project.

Answer: B

NEW QUESTION 211

- (Exam Topic 2)

Power, urgency, and legitimacy are attributes of which stakeholder classification model?

- A. Saliency
- B. Influence/impact
- C. Power/interest
- D. Power/influence

Answer: A

NEW QUESTION 215

- (Exam Topic 2)

The purpose of the Project Communications Management Knowledge Area is to:

- A. Monitor and control communications throughout the entire project life cycle.
- B. Maintain an optimal flow of information among all project participants.
- C. Develop an appropriate approach for project communications.
- D. Ensure timely and appropriate collection of project information.

Answer: D

NEW QUESTION 219

- (Exam Topic 2)

A project manager requesting industry groups and consultants to recommend project intervention is relying on:

- A. Communication models.
- B. Stakeholder participation.
- C. Expert judgment
- D. Enterprise environmental factors.

Answer: C

NEW QUESTION 222

- (Exam Topic 2)

Which of the Perform Quality Assurance tools and techniques may enhance the creation of the work breakdown structure (WBS) to give structure to the decomposition of the scope?

- A. Activity network diagrams
- B. Affinity diagrams
- C. Matrix diagrams
- D. Interrelationship digraphs

Answer: B

NEW QUESTION 224

- (Exam Topic 2)

Completion of the product scope is measured against the product:

- A. prototypes
- B. requirements
- C. analyses
- D. benchmarks

Answer: B

NEW QUESTION 227

- (Exam Topic 2)

In the Plan Procurement Management process, which source selection criteria analyzes if the seller's proposed technical methodologies, techniques, solutions, and services meet the procurement documents requirements?

- A. Technical approach
- B. Technical capability
- C. Business size and type
- D. Production capacity and interest

Answer: A

NEW QUESTION 229

- (Exam Topic 2)

The Project Human Resource Management process that involves confirming human resource availability and obtaining the team necessary to complete project activities is:

- A. Acquire Project Team.
- B. Plan Human Resource Management.
- C. Manage Project Team.
- D. Develop Project Team.

Answer: A

NEW QUESTION 234

- (Exam Topic 2)

At the start of a typical project life cycle, costs are:

- A. low, peak as work is carried out, and drop as the project nears the end.
- B. low, become steady as work is carried out, and increase as the project nears the end.
- C. high, drop as work is carried out, and increase as the project nears the end.
- D. high, become low as work is carried out, and drop as the project nears the end.

Answer: A

NEW QUESTION 235

- (Exam Topic 2)

The methodology that combines scope, schedule, and resource measurements to assess project performance and progress is known as:

- A. Earned value management.
- B. Forecasting.
- C. Critical chain methodology.
- D. Critical path methodology.

Answer: A

NEW QUESTION 237

- (Exam Topic 2)

Those who enter into a contractual agreement to provide services necessary for a project are:

- A. buyers
- B. sellers
- C. business partners
- D. product users

Answer: B

NEW QUESTION 242

- (Exam Topic 2)

An issue log is an input to which Project Human Resource Management process?

- A. Manage Project Team
- B. Acquire Project Team
- C. Plan Human Resource Management
- D. Develop Project Team

Answer: A

NEW QUESTION 245

- (Exam Topic 2)

Project Stakeholder Management focuses on:

- A. project staff assignments
- B. project team acquisition
- C. managing conflicting interests
- D. communication methods

Answer: C

NEW QUESTION 250

- (Exam Topic 2)

When painting a bedroom, preparing the walls can be done while the paint is being chosen. This is an example of a:

- A. lead
- B. lag
- C. mandatory dependency
- D. internal dependency

Answer: A

NEW QUESTION 251

- (Exam Topic 2)

The process of defining how the project scope will be validated and controlled is known as:

- A. Define Scope.
- B. Develop Project Management Plan.
- C. Plan Scope Management.
- D. Plan Quality Management.

Answer: C

NEW QUESTION 256

- (Exam Topic 2)

Which type of analysis is used to determine the cause and degree of difference between the baseline and actual performance?

- A. Schedule network analysis
- B. Reserve analysis
- C. Alternative analysis
- D. Variance analysis

Answer: D

NEW QUESTION 259

- (Exam Topic 2)

One of the key benefits of the Plan Human Resource Management process is that it:

- A. outlines team selection guidelines and team member responsibilities.
- B. establishes project roles and responsibilities.
- C. improves teamwork, interpersonal skills, and competencies.
- D. provides an accurate appraisal of team member performance.

Answer: B

NEW QUESTION 260

- (Exam Topic 2)

Which process involves determining, documenting, and managing stakeholders' needs and requirements to meet project objectives?

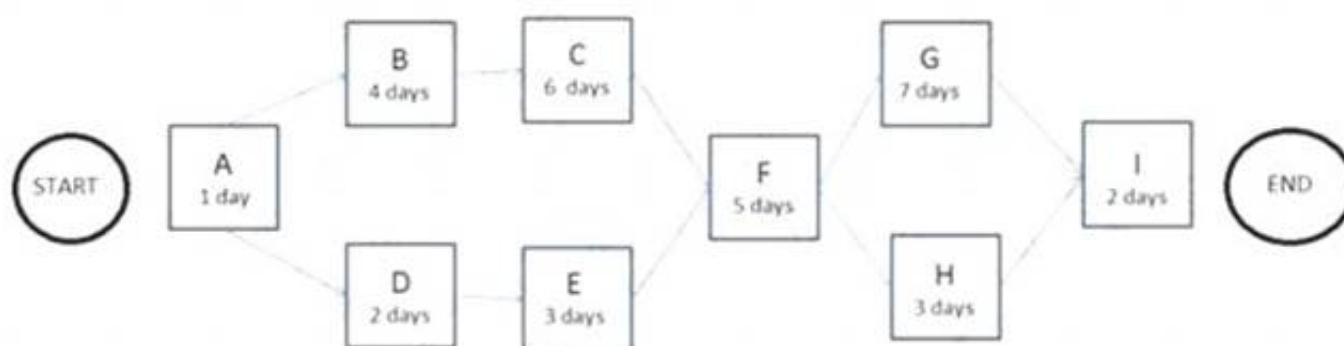
- A. Collect Requirements
- B. Plan Scope Management
- C. Define Scope
- D. Define Activities

Answer: A

NEW QUESTION 263

- (Exam Topic 2)

The following is a network diagram for a project.



The free float for Activity E is how many days?

- A. 2
- B. 3
- C. 5
- D. 8

Answer: C

NEW QUESTION 267

- (Exam Topic 2)

What is the risk rating if the probability of occurrence is 0.30 and the impact if it does occur is moderate (0.20)?

- A. 0.03
- B. 0.06
- C. 0.10
- D. 0.50

Answer: B

NEW QUESTION 268

- (Exam Topic 2)

Success is measured by benefits realization for a:

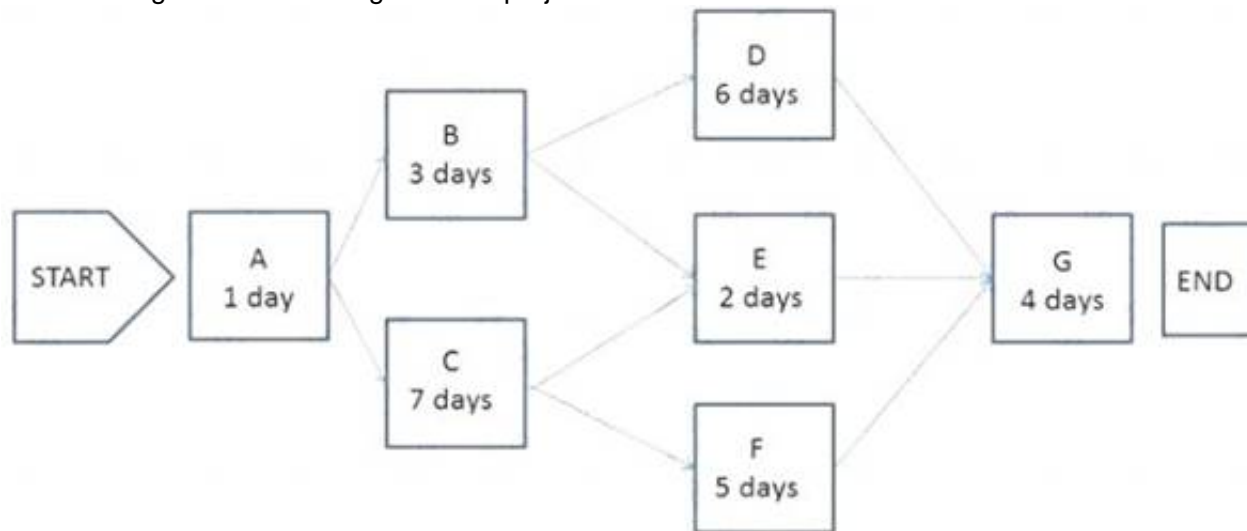
- A. strategic plan
- B. project
- C. portfolio
- D. program

Answer: C

NEW QUESTION 273

- (Exam Topic 2)

The following is a network diagram for a project.



What is the critical path for the project?

- A. A-B-D-G
- B. A-B-E-G
- C. A-C-F-G
- D. A-C-E-G

Answer: C

NEW QUESTION 274

- (Exam Topic 2)

An input to the Perform Integrated Change Control process is:

- A. expert judgment
- B. seller proposals
- C. the project charter
- D. the project management plan

Answer: D

NEW QUESTION 277

- (Exam Topic 2)

Which process is usually a rapid and cost-effective means of establishing priorities for Plan Risk Responses?

- A. Identify Risks
- B. Plan Risk Management
- C. Perform Qualitative Risk Analysis
- D. Perform Quantitative Risk Analysis

Answer: C

NEW QUESTION 281

- (Exam Topic 2)

Correlated and contextualized information on how closely the scope is being maintained relative to the scope baseline is contained within:

- A. project documents updates.
- B. project management plan updates.
- C. change requests.
- D. work performance information.

Answer: D

NEW QUESTION 285

- (Exam Topic 2)

The cost baseline and project funding requirements are outputs of which process in Project Cost Management?

- A. Estimate Costs
- B. Control Costs

- C. Plan Cost Management
- D. Determine Budget

Answer: D

NEW QUESTION 289

- (Exam Topic 2)

Processes in the Initiating Process Group may be completed at the organizational level and be outside of the project's:

- A. Level of control.
- B. Communication channels.
- C. Scope.
- D. Strategic alignment.

Answer: A

NEW QUESTION 293

- (Exam Topic 2)

A benefit of using virtual teams in the Acquire Project Team process is the reduction of the:

- A. cultural differences of team members
- B. possibility of communication misunderstandings
- C. costs associated with travel
- D. costs associated with technology

Answer: C

NEW QUESTION 296

- (Exam Topic 2)

Project deliverables that have been completed and checked for correctness through the Control Quality process are known as:

- A. Verified deliverables.
- B. Validated deliverables.
- C. Acceptance criteria.
- D. Activity resource requirements.

Answer: A

NEW QUESTION 299

- (Exam Topic 2)

The primary benefit of the Plan Schedule Management process is that it:

- A. provides guidance to identify time or schedule challenges within the project.
- B. tightly links processes to create a seamless project schedule.
- C. guides how the project schedule will be managed throughout the project.
- D. creates an overview of all activities broken down into manageable subsections.

Answer: C

NEW QUESTION 301

- (Exam Topic 2)

Which tools or techniques are used during the Close Project or Phase process?

- A. Reserve analysis and expert judgment
- B. Facilitation techniques and meetings
- C. Expert judgment and analytical techniques
- D. Performance reviews and meetings

Answer: C

NEW QUESTION 302

- (Exam Topic 2)

Which Define Activities tool or technique is used for dividing and subdividing the project scope and project deliverables into smaller, more manageable parts?

- A. Decomposition
- B. Inspection
- C. Project analysis
- D. Document analysis

Answer: A

NEW QUESTION 305

- (Exam Topic 2)

The following chart contains information about the tasks in a project.

Task	PV	AC	EV
1	10,000	10,000	10,000
2	10,000	8,000	10,000
3	10,000	8,000	8,000
4	9,000	12,000	10,000
5	10,000	12,000	12,000
6	10,000	10,000	12,000
7	12,000	12,000	10,000
8	10,000	8,000	9,000
9	12,000	10,000	11,000

Based on the chart, what is the cost performance index (CPI) for Task 2?

- A. 0.8
- B. 1
- C. 1.25
- D. 1.8

Answer: C

NEW QUESTION 310

- (Exam Topic 2)

The process of obtaining seller responses, selecting a seller, and awarding a contract is called:

- A. Close Procurements.
- B. Control Procurements.
- C. Plan Procurements.
- D. Conduct Procurements.

Answer: D

NEW QUESTION 311

- (Exam Topic 2)

Which basic quality tool explains a change in the dependent variable in relationship to a change observed in the corresponding independent variable?

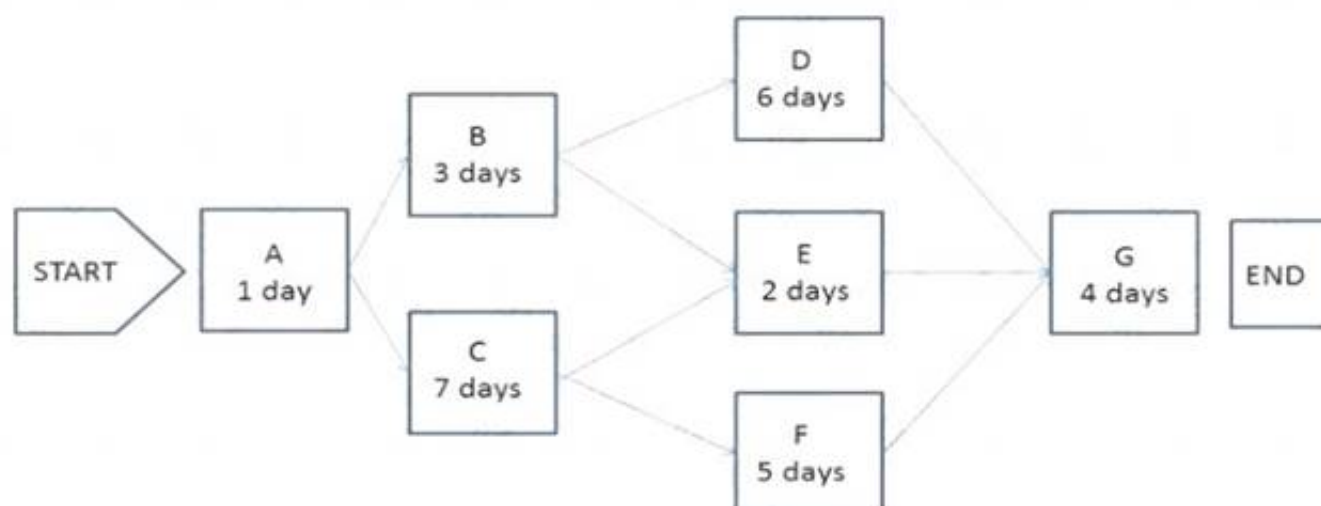
- A. Cause-and-effect diagram
- B. Histogram
- C. Control chart
- D. Scatter diagram

Answer: D

NEW QUESTION 312

- (Exam Topic 2)

The following is a network diagram for a project.



The shortest non-critical path for the project is how many days in duration?

- A. 10
- B. 12
- C. 14
- D. 16

Answer: A

NEW QUESTION 313

- (Exam Topic 2)

Which type of probability distribution is used to represent uncertain events such as the outcome of a test or a possible scenario in a decision tree?

- A. Uniform
- B. Continuous
- C. Discrete
- D. Linear

Answer: C

NEW QUESTION 316

- (Exam Topic 1)

Which tool or technique is used in the Perform Integrated Change Control process?

- A. Decomposition
- B. Modeling techniques
- C. Resource optimization
- D. Meetings

Answer: D

NEW QUESTION 317

- (Exam Topic 1)

The process of identifying and documenting project roles, responsibilities, required skills, and reporting relationships and creating a staffing management plan is known as:

- A. Develop Project Team.
- B. Manage Project Team.
- C. Acquire Project Team.
- D. Plan Human Resource Management.

Answer: D

NEW QUESTION 318

- (Exam Topic 1)

Which tool or technique is used in the Plan Scope Management process?

- A. Document analysis
- B. Observations
- C. Product analysis
- D. Expert judgment

Answer: D

NEW QUESTION 319

- (Exam Topic 1)

What is the schedule performance index (SPI) if the planned value (PV) is \$100, the actual cost (AC) is \$150, and the earned value (EV) is \$50?

- A. 0.50
- B. 0.67
- C. 1.50
- D. 2.00

Answer: A

NEW QUESTION 324

- (Exam Topic 1)

The Perform Quality Assurance process occurs in which Process Group?

- A. Executing
- B. Monitoring and Controlling
- C. Initiating
- D. Planning

Answer: A

NEW QUESTION 325

- (Exam Topic 1)

Status of deliverables, implementation status for change requests, and forecasted estimates to complete are examples of:

- A. Earned value management.
- B. Enterprise environmental factors.
- C. Organizational process assets.
- D. Work performance information.

Answer: D

NEW QUESTION 327

- (Exam Topic 1)

The iterative and interactive nature of the Process Groups creates the need for the processes in which Knowledge Area?

- A. Project Communications Management
- B. Project Integration Management
- C. Project Risk Management
- D. Project Scope Management

Answer: B

NEW QUESTION 330

- (Exam Topic 1)

A tool or technique used in the Control Procurements process is:

- A. Expert judgment.
- B. Performance reporting.
- C. Bidder conferences.
- D. Reserve analysis.

Answer: B

NEW QUESTION 332

- (Exam Topic 1)

Which item is a formal proposal to modify any document, deliverable, or baseline?

- A. Change request
- B. Requirements documentation
- C. Scope baseline
- D. Risk urgency assessment

Answer: A

NEW QUESTION 334

- (Exam Topic 1)

Which tool or technique is used in validating the scope of a project?

- A. Facilitated workshops
- B. Interviews
- C. Inspection
- D. Meetings

Answer: C

NEW QUESTION 338

- (Exam Topic 1)

An input to the Manage Project Team process is:

- A. Work performance reports.
- B. Change requests.
- C. Activity resource requirements.
- D. Enterprise environmental factors.

Answer: A

NEW QUESTION 342

- (Exam Topic 1)

Inputs to the Plan Schedule Management process include:

- A. Organizational process assets and the project charter,
- B. Enterprise environmental factors and schedule tools.
- C. Time tables and Pareto diagrams.
- D. Activity attributes and resource calendars.

Answer: A

NEW QUESTION 344

- (Exam Topic 1)

Identify Risks is part of which Process Group?

- A. Planning
- B. Executing
- C. Closing

D. Initiating

Answer: A

NEW QUESTION 347

- (Exam Topic 1)

A project manager managing a cross-cultural virtual project team across several time zones should be concerned about the impacts of which communication technology factor?

- A. Urgent information need
- B. Sensitivity of information
- C. Project environment
- D. Ease of use

Answer: C

NEW QUESTION 349

- (Exam Topic 1)

Which tool or technique of the Define Activities process allows for work to exist at various levels of detail depending on where it is in the project life cycle?

- A. Historical relationships
- B. Dependency determination
- C. Bottom-up estimating
- D. Rolling wave planning

Answer: D

NEW QUESTION 351

- (Exam Topic 1)

Which item is an input to the Define Activities process?

- A. Schedule data
- B. Activity list
- C. Risk register
- D. Scope baseline

Answer: D

NEW QUESTION 356

- (Exam Topic 1)

Which grid shows which resources are tied to work packages?

- A. Work breakdown structure (WBS)
- B. Responsibility assignment matrix (RAM)
- C. Project assignment chart
- D. Personnel assignment matrix

Answer: B

NEW QUESTION 357

- (Exam Topic 1)

Organizational theory is a tool used in which Project Human Resource Management process?

- A. Manage Project Team
- B. Acquire Project Team
- C. Develop Project Team
- D. Plan Human Resource Management

Answer: D

NEW QUESTION 361

- (Exam Topic 1)

In a project, total float measures the:

- A. Ability to shuffle schedule activities to lessen the duration of the project.
- B. Amount of time an activity can be extended or delayed without altering the project finish date.
- C. Cost expended to restore order to the project schedule after crashing the schedule.
- D. Estimate of the total resources needed for the project after performing a forward pass.

Answer: B

NEW QUESTION 364

- (Exam Topic 1)

Reserve analysis is a tool and technique used in which process?

- A. Plan Risk Management
- B. Plan Risk Responses
- C. Identify Risks
- D. Control Risks

Answer: D

NEW QUESTION 367

- (Exam Topic 1)

Which Plan Schedule Management tool or technique may involve choosing strategic options to estimate and schedule the project?

- A. Facilitation techniques
- B. Expert judgment
- C. Analytical techniques
- D. Variance analysis

Answer: C

NEW QUESTION 372

- (Exam Topic 1)

Which earned value management (EVM) metric is a measure of the cost efficiency of budgeted resources expressed as a ratio of earned value (EV) to actual cost (AC) and is considered a critical EVM metric?

- A. Cost variance (CV)
- B. Cost performance index (CPI)
- C. Budget at completion (BAC)
- D. Variance at completion (VAC)

Answer: B

NEW QUESTION 373

- (Exam Topic 1)

A project manager builds consensus and overcomes obstacles by employing which communication technique?

- A. Listening
- B. Facilitation
- C. Meeting management
- D. Presentation

Answer: B

NEW QUESTION 377

- (Exam Topic 1)

Which process identifies whether the needs of a project can best be met by acquiring products, services, or results outside of the organization?

- A. Plan Procurement Management
- B. Control Procurements
- C. Collect Requirements
- D. Plan Cost Management

Answer: A

NEW QUESTION 378

- (Exam Topic 1)

Which process involves defining, preparing, and coordinating all subsidiary plans and integrating them into a comprehensive plan?

- A. Direct and Manage Project Work
- B. Develop Project Management Plan
- C. Plan Quality Management
- D. Monitor and Control Project Work

Answer: B

NEW QUESTION 383

- (Exam Topic 1)

The only Process Group that comprises processes that typically occur from the beginning to the end of the project life cycle is:

- A. Planning.
- B. Executing,
- C. Monitoring and Controlling.
- D. Closing.

Answer: C

NEW QUESTION 388

- (Exam Topic 1)

The organization's perceived balance between risk taking and risk avoidance is reflected in the risk:

- A. Responses
- B. Appetite
- C. Tolerance
- D. Attitude

Answer: A

NEW QUESTION 390

- (Exam Topic 1)

Which process determines the risks that may affect the project and documents their characteristics?

- A. Control Risks
- B. Plan Risk Management
- C. Plan Risk Responses
- D. Identify Risks

Answer: D

NEW QUESTION 393

- (Exam Topic 1)

Which tool or technique is used in the Estimate Costs process?

- A. Acquisition
- B. Earned value management
- C. Vendor bid analysis
- D. Forecasting

Answer: C

NEW QUESTION 398

- (Exam Topic 1)

Change requests are processed for review and disposition according to which process?

- A. Control Quality
- B. Control Scope
- C. Monitor and Control Project Work
- D. Perform Integrated Change Control

Answer: D

NEW QUESTION 402

- (Exam Topic 1)

What are the Project Procurement Management processes?

- A. Conduct Procurements, Control Procurements, Integrate Procurements, and Close Procurements
- B. Estimate Procurements, Integrate Procurements, Control Procurements, and Validate Procurements
- C. Plan Procurement Management, Conduct Procurements, Control Procurements, and Close Procurements
- D. Plan Procurement Management, Perform Procurements, Control Procurements, and Validate Procurements

Answer: C

NEW QUESTION 407

- (Exam Topic 1)

A regression line is used to estimate:

- A. Whether or not a process is stable or has predictable performance.
- B. How a change to the independent variable influences the value of the dependent variable.
- C. The upper and lower specification limits on a control chart.
- D. The central tendency, dispersion, and shape of a statistical distribution.

Answer: B

NEW QUESTION 409

- (Exam Topic 1)

Which input to the Plan Risk Management process provides information on high-level risks?

- A. Project charter
- B. Enterprise environmental factors
- C. Stakeholder register
- D. Organizational process assets

Answer: A

NEW QUESTION 414

- (Exam Topic 1)

The process of prioritizing risks for further analysis or action is known as:

- A. Plan Risk Management.
- B. Plan Risk Responses.
- C. Perform Qualitative Risk Analysis.
- D. Perform Quantitative Risk Analysis.

Answer: C

NEW QUESTION 419

- (Exam Topic 1)

Which Knowledge Areas include processes from the Closing Process Group?

- A. Project Quality Management and Project Time Management
- B. Project Scope Management and Project Risk Management
- C. Project Stakeholder Management and Project Cost Management
- D. Project Integration Management and Project Procurement Management

Answer: D

NEW QUESTION 421

- (Exam Topic 1)

When should quality planning be performed?

- A. While developing the project charter
- B. In parallel with the other planning processes
- C. As part of a detailed risk analysis
- D. As a separate step from the other planning processes

Answer: B

NEW QUESTION 426

- (Exam Topic 1)

Which process in Project Time Management includes reserve analysis as a tool or technique?

- A. Estimate Activity Resources
- B. Sequence Activities
- C. Estimate Activity Durations
- D. Develop Schedule

Answer: C

NEW QUESTION 427

- (Exam Topic 1)

An input used in developing the communications management plan is:

- A. Communication models.
- B. Enterprise environmental factors.
- C. Organizational communications,
- D. Organizational cultures and styles.

Answer: B

NEW QUESTION 432

- (Exam Topic 1)

Which process involves monitoring the status of the project to update the project costs and managing changes to the cost baseline?

- A. Estimate Costs
- B. Control Costs
- C. Determine Budget
- D. Plan Cost Management

Answer: B

NEW QUESTION 433

- (Exam Topic 1)

Which tool or technique is an examination of industry and specific vendor capabilities?

- A. Independent estimates
- B. Market research
- C. Analytical techniques
- D. Bidder conferences

Answer: B

NEW QUESTION 437

- (Exam Topic 1)

Which type of project management office (PMO) supplies templates, best practices, and training to project teams?

- A. Supportive
- B. Directive
- C. Controlling
- D. Instructive

Answer: A

NEW QUESTION 439

- (Exam Topic 1)

An output of the Validate Scope process is:

- A. A requirements traceability matrix.
- B. The scope management plan.
- C. Work performance reports.
- D. Change requests.

Answer: D

NEW QUESTION 443

- (Exam Topic 1)

Regression analysis, failure mode and effect analysis (FMEA), fault tree analysis (FTA), and trend analysis are examples of which tool or technique?

- A. Expert judgment
- B. Forecasting methods
- C. Earned value management
- D. Analytical techniques

Answer: D

NEW QUESTION 445

- (Exam Topic 1)

The process of identifying and documenting relationships among the project activities is known as:

- A. Control Schedule.
- B. Sequence Activities.
- C. Define Activities.
- D. Develop Schedule.

Answer: B

NEW QUESTION 450

- (Exam Topic 1)

The process of estimating the type and quantity of material, human resources, equipment, or supplies required to perform each activity is known as:

- A. Collect Requirements.
- B. Conduct Procurements.
- C. Estimate Activity Durations.
- D. Estimate Activity Resources.

Answer: D

NEW QUESTION 451

- (Exam Topic 1)

Plan Schedule Management is a process in which Knowledge Area?

- A. Project Scope Management
- B. Project Human Resource Management
- C. Project Integration Management
- D. Project Time Management

Answer: D

NEW QUESTION 456

- (Exam Topic 1)

An output of the Manage Stakeholder Engagement process is:

- A. change requests
- B. enterprise environmental factors
- C. the stakeholder management plan
- D. the change log

Answer: A

NEW QUESTION 459

- (Exam Topic 1)

Updates to organizational process assets such as procurement files, deliverable acceptances, and lessons learned documentation are typical outputs of which process?

- A. Close Project or Phase
- B. Conduct Procurements
- C. Control Procurements
- D. Close Procurements

Answer: D

NEW QUESTION 463

- (Exam Topic 1)

Which tools or techniques are used in the Plan Schedule Management process?

- A. Benchmarking, expert judgment, and analytical techniques
- B. Statistical sampling, benchmarking, and meetings
- C. Negotiations, pre-assignment, and multi-criteria decision analysis
- D. Expert judgment, analytical techniques, and meetings

Answer: D

NEW QUESTION 464

- (Exam Topic 1)

Scope, schedule, and cost parameters are integrated in the:

- A. Performance measurement baseline.
- B. Analysis of project forecasts,
- C. Summary of changes approved in a period,
- D. Analysis of past performance.

Answer: A

NEW QUESTION 466

- (Exam Topic 1)

Using values such as scope, cost, budget, and duration or measures of scale such as size, weight, and complexity from a previous similar project as the basis for estimating the same parameter or measurement for a current project describes which type of estimating?

- A. Bottom-up
- B. Parametric
- C. Analogous
- D. Three-point

Answer: C

NEW QUESTION 468

- (Exam Topic 1)

The process of establishing the policies, procedures, and documentation for planning, developing, managing, executing, and controlling the project schedule is known as:

- A. Plan Schedule Management.
- B. Develop Project Charter.
- C. Develop Schedule.
- D. Plan Scope Management.

Answer: A

NEW QUESTION 469

- (Exam Topic 1)

Processes in the Planning Process Group are typically carried out during which part of the project life cycle?

- A. Only once, at the beginning
- B. At the beginning and the end
- C. Once during each phase
- D. Repeatedly

Answer: D

NEW QUESTION 472

- (Exam Topic 6)

What are the objectives of Initiation processes?

- A. Initiation processes are performed in order to develop the project charter and identify stakeholders.
- B. Initiation processes are performed in order to obtain budget approval for a project or phase and approve scope with customers.
- C. Initiation processes are performed to identify business objectives for a project or phase and identify stakeholders' goals.
- D. Initiation processes are performed to map initial requirements for a project or phase and prioritize them with stakeholders.

Answer: D

NEW QUESTION 477

- (Exam Topic 6)

Which is the correct hierarchy in a project environment, from most to least inclusive?

- A. Projects, portfolios, then programs
- B. Portfolios, programs, then projects
- C. Portfolios, projects, then programs
- D. Projects, programs, then portfolios

Answer: D

NEW QUESTION 479

- (Exam Topic 6)

How can a project manager maintain the engagement of stakeholders in a project with a high degree of change?

- A. Monitor project stakeholder relationships using engaging strategies and plans
- B. Send all project documents to stakeholders each time they are modified
- C. Schedule monthly meetings with the stakeholders, including team members
- D. Engage only with the project sponsors

Answer: C

NEW QUESTION 481

- (Exam Topic 6)

The features and functions that characterize a result, product, or service can refer to:

- A. project scope
- B. product scope
- C. service scope
- D. product breakdown structure

Answer: B

NEW QUESTION 482

- (Exam Topic 6)

What type of change requires the submission of a change request?

- A. Changes in assigned resources
- B. Changes in a technical solution
- C. Changes in status reporting
- D. Changes in the project's scope

Answer: D

NEW QUESTION 483

- (Exam Topic 6)

What should a project manager use to determine how much money is needed to complete a project?

- A. Earned value management (EVM)
- B. Estimate at completion (EAC)
- C. Earned value analysis (EVA)
- D. Budget at completion (BAG)

Answer: B

NEW QUESTION 484

- (Exam Topic 6)

The project team is brainstorming on approaches to deliver the upcoming product launch for which the project has been chartered. The project manager is laying out hybrid, adaptive, iterative methods. What is the team trying to address?

- A. Co-location
- B. Life-cycle
- C. Diversity
- D. Management

Answer: D

NEW QUESTION 486

- (Exam Topic 6)

Which is an example of analogous estimating?

- A. Estimates are created by individuals or groups with specialized knowledge.
- B. Estimates are created by using information about resources of previous similar projects.
- C. Estimates are created by analyzing data.
- D. Estimates are created at the task level and aggregated upwards.

Answer: B

NEW QUESTION 488

- (Exam Topic 6)

A project team is discussing an upcoming planned product launch of a highly visible technologically advanced artificial intelligence tool. The team is debating the aspect of iterative and hybrid approaches. Which aspect of tailoring would this best represent?

- A. Life cycle approaches
- B. Resource availability
- C. Project dimensions
- D. Technology support

Answer: D

NEW QUESTION 490

- (Exam Topic 6)

Which of the following are processes associated with Project Cost Management?

- A. Develop Cost
- B. Estimate Costs, Determine Budget
- C. Control Costs
- D. Develop Budget, Determine Budget, Determine Risks, Control Costs
- E. Plan Cost Management, Estimate Cost
- F. Determine Budget
- G. Control Costs
- H. Plan Budget Management
- I. Determine Budget, Create Cost Account
- J. Control Costs

Answer: C

NEW QUESTION 492

- (Exam Topic 5)

The correct equation for schedule variance (SV) is earned value:

- A. minus planned value [EV - PV].
- B. minus actual cost [EV - AC].
- C. divided by planned value [EV/PV],
- D. divided by actual cost [EV/AC].

Answer: A

NEW QUESTION 497

- (Exam Topic 5)

What are the identified risks for doing excessive decomposition in a WBS?

- A. Insufficient project funding and disqualification of sellers
- B. Insufficient project funding and ineffective use of resources
- C. Disqualification of sellers and non-productive management efforts
- D. Non-productive management effort and inefficient use of resources

Answer: D

NEW QUESTION 502

- (Exam Topic 5)

Which of the following is a tool and technique used to monitor risk?

- A. Technical performance measurement
- B. Cost performance baseline
- C. Benchmarking
- D. Cost of quality

Answer: A

NEW QUESTION 503

- (Exam Topic 5)

A project manager at a publishing company decides to initiate the editing phase of the project as soon as each chapter is written. Which type of Sequence Activities tool and technique is involved, considering that there was a start-to-start relationship with a 15-day delay?

- A. Slack
- B. Float
- C. Lag
- D. Lead

Answer: C

NEW QUESTION 506

- (Exam Topic 5)

The risk shared between the buyer and seller is determined by the:

- A. assumption log.
- B. quality checklist.
- C. risk register.
- D. contract type.

Answer: D

NEW QUESTION 507

- (Exam Topic 5)

Expected monetary value (EMV) is computed by which equation?

- A. Value of each possible outcome multiplied by probability of occurrence
- B. Value of each possible outcome multiplied by probability of non-occurrence
- C. Multiplying the value of each possible outcome by the probability of occurrence and adding the products together
- D. Multiplying the value of each possible outcome by the probability of non-occurrence and adding the products together

Answer: C

NEW QUESTION 508

- (Exam Topic 5)

A tool and technique used during the Collect Requirements process is:

- A. prototypes.
- B. expert judgment.
- C. alternatives identification.
- D. product analysis.

Answer: A

NEW QUESTION 511

- (Exam Topic 5)

Which of the following is an estimating technique that uses the values of parameters from previous similar projects for estimating the same parameter or measure for a current project?

- A. Reserve analysis
- B. Three-point estimating
- C. Parametric estimating
- D. Analogous estimating

Answer: D

NEW QUESTION 513

- (Exam Topic 5)

Which type of dependency is contractually required or inherent in the nature of the work?

- A. External
- B. Lead
- C. Discretionary
- D. Mandatory

Answer: D

NEW QUESTION 517

- (Exam Topic 5)

At which stage of team development do members begin to work together, adjust work habits, and trust each other?

- A. Forming
- B. Storming
- C. Norming
- D. Performing

Answer: C

NEW QUESTION 519

- (Exam Topic 5)

The project management processes are usually presented as discrete processes with defined interfaces, while in practice they:

- A. operate separately.
- B. move together in batches,
- C. overlap and interact.
- D. move in a sequence.

Answer: C

NEW QUESTION 523

- (Exam Topic 5)

Who determines which dependencies are mandatory during the Sequence Activities process?

- A. Project manager
- B. External stakeholders
- C. Internal stakeholders
- D. Project team

Answer: D

NEW QUESTION 528

- (Exam Topic 5)

Which is an output of the Collect Requirements process?

- A. Requirements traceability matrix
- B. Project scope statement
- C. WBS dictionary
- D. Work performance measurements

Answer: A

NEW QUESTION 532

- (Exam Topic 5)

The process of identifying specific actions to be performed to produce project deliverables is:

- A. Define Activities.
- B. Create WBS.
- C. Define Scope.
- D. Develop Schedule.

Answer: A

NEW QUESTION 533

- (Exam Topic 5)

The application of knowledge, skills, tools, and techniques to project activities to meet project requirements describes management of which of the following?

- A. Project
- B. Scope
- C. Contract
- D. Program

Answer: A

NEW QUESTION 538

- (Exam Topic 5)

The project has a current cost performance index of 0.80. Assuming this performance will continue, the new estimate at completion is \$1000. What was the original budget at completion for the project?

- A. \$800
- B. \$1000
- C. \$1250
- D. \$1800

Answer: A

NEW QUESTION 539

- (Exam Topic 5)

Which type of contract is a hybrid of both a cost-reimbursable and a fixed-price contract?

- A. Cost Plus Award Fee Contract (CPAF)
- B. Firm-Fixed -Price Contract (FFP)
- C. Time and Material Contract (T&M)
- D. Cost Plus Incentive Fee Contract (CPIF)

Answer: C

NEW QUESTION 540

- (Exam Topic 5)

Which statement is true about the project management body of knowledge?

- A. Recognized by every project manager
- B. Constantly evolving
- C. The sum of all knowledge related to project management
- D. A sum of knowledge that should be applied on every project

Answer: B

NEW QUESTION 545

- (Exam Topic 5)

The contract in which the seller is reimbursed for all allowable costs for performing the contract work and then receives a fee based upon achieving certain performance objectives is called a:

- A. Cost Plus Incentive Fee Contract (CPIF).
- B. Cost Plus Fixed Fee Contract (CPFF).
- C. Fixed Price Incentive Fee Contract (FPIF).
- D. Time and Material Contract (T&M).

Answer: A

NEW QUESTION 546

- (Exam Topic 5)

What is project management?

- A. A logical grouping of project management inputs, outputs, tools, and techniques
- B. Applying knowledge, skills, tools, and techniques to project activities to meet the project requirements
- C. Launching a process that can result in the authorization of a new project
- D. A formal, approved document that defines how the project is executed, monitored, and controlled

Answer: B

NEW QUESTION 547

- (Exam Topic 5)

Which of the following is a tool or technique used in the Acquire Project Team process?

- A. Networking
- B. Training
- C. Negotiation
- D. Issue log

Answer: C

NEW QUESTION 549

- (Exam Topic 5)

Resource calendars are included in the:

- A. staffing management plan.
- B. work breakdown structure (WBS).
- C. project communications plan.
- D. project charter.

Answer: A

NEW QUESTION 550

- (Exam Topic 5)

Fast tracking is a schedule compression technique used to shorten the project schedule without changing project scope. Which of the following can result from fast tracking?

- A. The risk of achieving the shortened project time is increased.
- B. The critical path will have positive total float.
- C. Contingency reserves are released for redeployment by the project manager.
- D. Duration buffers are added to maintain a focus on planned activity durations.

Answer: A

NEW QUESTION 552

- (Exam Topic 5)

An input to the Collect Requirements process is the:

- A. stakeholder register.
- B. project management plan.
- C. project scope statement.
- D. requirements management plan.

Answer: A

NEW QUESTION 554

- (Exam Topic 5)

Which of the following can be used as an input for Define Scope?

- A. Product analysis
- B. Project charter
- C. Scope baseline
- D. Project scope statement

Answer: B

NEW QUESTION 558

- (Exam Topic 5)

The process improvement plan details the steps for analyzing processes to identify activities which enhance their:

- A. quality.
- B. value.
- C. technical performance.
- D. status.

Answer: B

NEW QUESTION 563

- (Exam Topic 5)

Which of the following is a tool or technique used in the Determine Budget process?

- A. Variance analysis
- B. Three-point estimating
- C. Bottom-up estimating
- D. Historical relationships

Answer: D

NEW QUESTION 566

- (Exam Topic 4)

A given schedule activity is most likely to last four weeks. In a best-case scenario, the schedule activity is estimated to last two weeks. In a worst-case scenario, the schedule activity is estimated to last 12 weeks. Given these three estimates, what is the expected duration of the activity?

- A. Three weeks
- B. Four weeks
- C. Five weeks
- D. Six weeks

Answer: C

NEW QUESTION 571

- (Exam Topic 4)

In a construction project schedule, what is the logical relationship between the delivery of the concrete materials and the pouring of concrete?

- A. Start-to-start (SS)
- B. Start-to-finish (SF)
- C. Finish-to-finish (FF)
- D. Finish-to-start (FS)

Answer: D

NEW QUESTION 574

- (Exam Topic 4)

Quality metrics are an output of which process?

- A. Plan Quality
- B. Perform Quality Control
- C. Perform Quality Assurance
- D. Perform Qualitative Risk Analysis

Answer: A

NEW QUESTION 579

- (Exam Topic 4)

Which of the following is the primary output of the Identify Risks process?

- A. Risk management plan
- B. Risk register

- C. Change requests
- D. Risk response plan

Answer: B

NEW QUESTION 583

- (Exam Topic 4)

When sequencing activities, what does the common acronym FF stand for?

- A. Fixed Fee
- B. Free Float
- C. Fixed Finish
- D. Finish-to-Finish

Answer: D

NEW QUESTION 586

- (Exam Topic 4)

Which of the following is a conflict resolution technique that emphasizes areas of agreement rather than areas of difference?

- A. Compromising
- B. Collaborating
- C. Smoothing
- D. Problem Solving

Answer: C

NEW QUESTION 587

- (Exam Topic 4)

What is the most accurate rough order of magnitude (ROM)?

- A. In the Initiation phase, the estimate is in the range of +/- 50%.
- B. In the Planning phase, the estimate is in the range of +/- 50%.
- C. In the Monitoring and Controlling phase, the estimate is in the range of +/- 15%.
- D. In the Closing phase, the estimate is in the range of +/- 15%.

Answer: A

NEW QUESTION 589

- (Exam Topic 4)

Which activity involves ensuring that the composition of a projects configuration items is correct?

- A. Configuration Identification
- B. Configuration Status Accounting
- C. Configuration Verification and Audit
- D. Configuration Quality Assurance

Answer: C

NEW QUESTION 591

- (Exam Topic 4)

Which of the following is a set of interrelated actions and activities performed to achieve a prespecified product, result, or service?

- A. Portfolio
- B. Process
- C. Project
- D. Program

Answer: B

NEW QUESTION 594

- (Exam Topic 4)

Which of the following is an example of schedule compression?

- A. Activity sequencing
- B. Resource leveling
- C. Lead and lag adjusting
- D. Crashing

Answer: D

NEW QUESTION 598

- (Exam Topic 4)

Which standard has interrelationships to other project management disciplines such as program management and portfolio management?

- A. Program Management Body of Knowledge Guide
- B. The Standard for Program Management
- C. Organizational Project Management Maturity Model (OPM3\$)
- D. Guide to the Project Management Body of Knowledge (PMBOK®)

Answer: D

NEW QUESTION 601

- (Exam Topic 4)

In which Project Management Process Group is the project charter developed?

- A. Monitoring and Controlling
- B. Executing
- C. Initiating
- D. Planning

Answer: C

NEW QUESTION 604

- (Exam Topic 4)

How is the schedule variance calculated using the earned value technique?

- A. EV less AC
- B. AC less PV
- C. EV less PV
- D. AC less EV

Answer: C

NEW QUESTION 606

- (Exam Topic 4)

Which of the following is an input to Control Scope?

- A. Project schedule
- B. Organizational process assets updates
- C. Project document updates
- D. Work performance information

Answer: D

NEW QUESTION 609

- (Exam Topic 4)

A tool or technique in Perform Quality Control that a project manager would use is:

- A. quality audits.
- B. process analysis.
- C. benchmarking.
- D. inspection.

Answer: D

NEW QUESTION 610

- (Exam Topic 4)

Who provides the inputs for the original estimates of activity durations for tasks on the project plan?

- A. Project sponsor
- B. Project manager
- C. Person responsible for project scheduling
- D. Person who is most familiar with the task

Answer: D

NEW QUESTION 611

- (Exam Topic 4)

Which of the following schedule network analysis techniques is applied when a critical path method calculation has been completed and resources availability is critical?

- A. Applying calendars
- B. Resource leveling
- C. Resource planning
- D. Resource conflict management

Answer: B

NEW QUESTION 616

- (Exam Topic 4)

Which category of contracts are sellers legally obligated to complete, with possible financial damages if the project objectives are not met?

- A. Cost-reimbursable contracts
- B. Time and Material contracts (T&M)
- C. Fixed-price contracts
- D. Cost Plus Fixed Fee Contracts (CPFF)

Answer: C

NEW QUESTION 621

- (Exam Topic 4)

A weighting system is a tool for which area of Conduct Procurements?

- A. Plan contracting
- B. Requesting seller responses
- C. Selecting seller's
- D. Planning purchase and acquisition

Answer: C

NEW QUESTION 626

- (Exam Topic 4)

Which of the following Project Communication Management processes uses performance reports as an input?

- A. Manage Stakeholder Expectations
- B. Report Performance
- C. Distribute Information
- D. Plan Communications

Answer: C

NEW QUESTION 630

- (Exam Topic 4)

Project contracts generally fall into which of the following three broad categories?

- A. Fixed-price, cost reimbursable, time and materials
- B. Make-or-buy, margin analysis, fixed-price
- C. Time and materials, fixed-price, margin analysis
- D. Make-or-buy, lump-sum, cost-plus-incentive

Answer: A

NEW QUESTION 631

- (Exam Topic 4)

Which of the following strategies is used to deal with risks that may have a negative impact on project objectives?

- A. Exploit
- B. Share
- C. Enhance
- D. Transfer

Answer: D

NEW QUESTION 635

- (Exam Topic 4)

What provides information regarding the ways people, teams, and organizational units behave?

- A. Organizational chart
- B. Organizational theory
- C. Organizational structure
- D. Organizational behavior

Answer: B

NEW QUESTION 640

- (Exam Topic 4)

Co-location is a tool and technique of:

- A. Develop Human Resource Plan.
- B. Manage Project Team.
- C. Develop Project Team.
- D. Acquire Project Team.

Answer: C

NEW QUESTION 642

- (Exam Topic 4)

Which of the following is an input to the Direct and Manage Project Execution process?

- A. Approved change requests
- B. Approved contract documentation
- C. Work performance information
- D. Rejected change requests

Answer: A

NEW QUESTION 644

- (Exam Topic 4)

What is a tool to improve team performance?

- A. Staffing plan
- B. External feedback
- C. Performance reports
- D. Co-location

Answer: D

NEW QUESTION 648

- (Exam Topic 4)

In a weak matrix, the project managers role is:

- A. part-time
- B. full-time
- C. occasional
- D. unlimited

Answer: A

NEW QUESTION 651

- (Exam Topic 4)

Labor, materials, equipment, and supplies are examples of:

- A. Resource attributes.
- B. Resource types.
- C. Resource categories.
- D. Resource breakdown structures (RBS).

Answer: C

NEW QUESTION 656

- (Exam Topic 4)

Change requests, project management plan updates, project document updates, and organizational process assets updates are all outputs of which project management process?

- A. Plan Risk Responses
- B. Manage Stakeholder Expectations
- C. Define Scope
- D. Report Performance

Answer: B

NEW QUESTION 657

- (Exam Topic 4)

The key benefit of the Monitoring and Controlling Process Group is the ability to:

- A. establish and manage project communication channels, both external and internal to the project team.
- B. influence the stakeholders that want to circumvent integrated change control so that their changes are implemented.
- C. monitor the ongoing project team against the team performance assessments and the project performance baseline.
- D. observe and measure project performance regularly and consistently to identify variances from the project management plan.

Answer: D

NEW QUESTION 660

- (Exam Topic 4)

Which is an output from Distribute Information?

- A. Earned value analysis
- B. Trend analysis
- C. Project records
- D. Performance reviews

Answer:

C

NEW QUESTION 661

- (Exam Topic 4)

The risk management team of a software project has decided that due to the lack of adequate talent in the company, development of a specific part of the system is under high risk, so the team has decided to outsource it. This is an example of which risk response?

- A. Transfer
- B. Share
- C. Avoid
- D. Accept

Answer: A

NEW QUESTION 662

- (Exam Topic 4)

A method to manage stakeholder expectations in the scope statement is to clearly:

- A. state the guiding principles of the organization.
- B. identify alternatives to generate different approaches.
- C. state what is out of scope.
- D. outline the results of the Delphi technique.

Answer: C

NEW QUESTION 665

- (Exam Topic 4)

In which process is a project manager identified and given the authority to apply resources to project activities?

- A. Acquire Project Team
- B. Develop Project Management Plan
- C. Manage Project Execution
- D. Develop Project Charter

Answer: D

NEW QUESTION 667

- (Exam Topic 4)

Changes to formally controlled documentation, plans, etc. to reflect modified or additional ideas or content are known as:

- A. updates.
- B. defect repairs.
- C. preventive actions.
- D. corrective actions.

Answer: A

NEW QUESTION 668

- (Exam Topic 4)

Which of the following outputs from the Control Schedule process aids in the communication of schedule variance (SV), schedule performance index (SPI), or any performance status to stakeholders?

- A. Performance organizations
- B. Schedule baselines
- C. Work performance measurements
- D. Change requests

Answer: C

NEW QUESTION 671

- (Exam Topic 4)

Which of the following is a tool and technique used in the Develop Schedule process?

- A. Three-point estimates
- B. Resource leveling
- C. Precedence diagramming method
- D. Bottom-up estimating

Answer: B

NEW QUESTION 675

- (Exam Topic 4)

Prioritizing risks for further analysis or action by assessing and combining their probability of occurrence and impact takes place in which process?

- A. Monitor and Control Risks
- B. Plan Risk Management

- C. Perform Qualitative Risk Analysis
- D. Perform Quantitative Risk Analysis

Answer: C

NEW QUESTION 678

- (Exam Topic 4)

In which Process Group are lessons learned documented?

- A. Planning
- B. Closing
- C. Executing
- D. Initiating

Answer: B

NEW QUESTION 682

- (Exam Topic 4)

Which of the following is an output of the Perform Integrated Change Control process?

- A. Project document updates
- B. Organizational process assets updates
- C. Change requests
- D. Deliverables

Answer: A

NEW QUESTION 686

- (Exam Topic 4)

The purpose of inspection in Perform Quality Control is to keep errors:

- A. in line with a measured degree of conformity.
- B. out of the hands of the customer.
- C. in a specified range of acceptable results.
- D. out of the process.

Answer: B

NEW QUESTION 690

- (Exam Topic 4)

Which process determines the risks that might affect the project?

- A. Perform Qualitative Risk Analysis
- B. Identify Risks
- C. Plan Risk Management
- D. Perform Quantitative Risk Analysis

Answer: B

NEW QUESTION 691

- (Exam Topic 4)

Which is the correct formula for calculating expected activity cost for three-point estimating?

- A. $C_e = (C_0 + 6C_m + C_p)/4$
- B. $C_e = (6C_0 + C_m + C_p)/4$
- C. $C_e = (C_0 + 4C_m + C_p)/6$
- D. $C_e = (C_0 + C_{m,} + 4C_p) / 6$

Answer: C

NEW QUESTION 694

- (Exam Topic 4)

Which process should be conducted from the project inception through completion?

- A. Monitor and Control Project Work
- B. Perform Quality Control
- C. Perform Integrated Change Control
- D. Monitor and Control Risks

Answer: C

NEW QUESTION 695

- (Exam Topic 4)

The project manager at an organization has just realized that some of the engineering staff has been allocated to project Y and will not be available to finish task X. The project manager has also discovered that at the current pace, it will not be possible to complete the project on time. Due to cost constraints, hiring more work

force is not a viable option. Which tools are at the manager's disposal?

- A. Resource leveling and fast tracking
- B. Fast tracking and crashing
- C. Crashing and applying leads and lags
- D. Scheduling tools and applying leads and lags

Answer: A

NEW QUESTION 698

- (Exam Topic 4)

Which type of estimating is used to improve the accuracy of an activity's duration?

- A. Analogous
- B. Parametric
- C. Three-point
- D. What-if scenario analysis

Answer: C

NEW QUESTION 703

- (Exam Topic 4)

Which of the following strategic considerations often results in project authorization?

- A. Customer requests and/or issue resolution
- B. Stakeholder expectations and/or strategic opportunity (business need)
- C. Technological advancement and/or senior executive request
- D. Market demand and/or legal requirements

Answer: D

NEW QUESTION 706

- (Exam Topic 4)

Which of the following is developed from the project scope baseline and defines only that portion of the project scope that is to be included within a related contract?

- A. Product scope description
- B. Procurement statement of work
- C. Project schedule
- D. Work breakdown structure (WBS)

Answer: B

NEW QUESTION 711

- (Exam Topic 4)

The output that defines an approach to increase the support and minimize negative impacts of stakeholders is the:

- A. stakeholder management strategy.
- B. communications management plan,
- C. stakeholder register,
- D. performance report.

Answer: A

NEW QUESTION 715

- (Exam Topic 4)

What is the responsibility of the project manager and the functional manager respectively?

- A. Oversight for an administrative area; a facet of the core business
- B. Achieving the project objectives; providing management oversight for an administrative area
- C. A facet of the core business; achieving the project objectives
- D. Both are responsible for achieving the project objectives.

Answer: B

NEW QUESTION 719

- (Exam Topic 4)

Which technique is commonly used for the Perform Quantitative Risk Analysis process?

- A. Brainstorming
- B. Strategies for opportunities
- C. Decision tree analysis
- D. Risk data quality assessment

Answer: C

NEW QUESTION 721

- (Exam Topic 4)

Monte Carlo is which type of risk analysis technique?

- A. Probability
- B. Quantitative
- C. Qualitative
- D. Sensitivity

Answer: B

NEW QUESTION 726

- (Exam Topic 4)

The PV is \$1000, EV is \$2000, and AC is \$1500. What is CPI?

- A. 1.33
- B. 2
- C. 0.75
- D. 0.5

Answer: A

NEW QUESTION 729

- (Exam Topic 4)

Which technique helps to determine the risks that have the most potential impact on a project?

- A. Cost risk simulation analysis
- B. Expected monetary value analysis
- C. Modeling and simulation
- D. Sensitivity analysis

Answer: D

NEW QUESTION 733

- (Exam Topic 4)

Which of the following reduces the probability of potential consequences of project risk events?

- A. Preventive action
- B. Risk management
- C. Corrective action
- D. Defect repair

Answer: A

NEW QUESTION 734

- (Exam Topic 4)

Testing falls into which of the following categories of cost of quality?

- A. Internal failure costs
- B. Prevention costs
- C. Appraisal costs
- D. External failure costs

Answer: C

NEW QUESTION 739

- (Exam Topic 4)

What is a deliverable-oriented, hierarchical decomposition of the work to be executed to accomplish the project objectives and create the required deliverables?

- A. Organizational breakdown structure (OBS)
- B. Work performance information
- C. Work package
- D. Work breakdown structure (WBS)

Answer: D

NEW QUESTION 740

- (Exam Topic 4)

Types of internal failure costs include:

- A. inspections.
- B. equipment and training.
- C. lost business.
- D. reworking and scrapping.

Answer: D

NEW QUESTION 742

- (Exam Topic 4)

Which of the following statements is true regarding project and product lifecycles?

- A. A single product lifecycle may consist of multiple project lifecycles.
- B. A product lifecycle is always shorter than the project lifecycle.
- C. A single product lifecycle can only have one project lifecycle.
- D. A single project lifecycle may consist of multiple product lifecycles.

Answer: A

NEW QUESTION 745

- (Exam Topic 4)

"Tailoring" is defined as the:

- A. effort of addressing each process to determine which are appropriate and their appropriate degree of rigor.
- B. act of creating a project team with the specialized skills required to produce a required product or service.
- C. action taken to bring a defective or nonconforming component into compliance with requirements or specifications.
- D. adjustment of the respective influences of time, cost, and quality in order to most efficiently achieve scope.

Answer: A

NEW QUESTION 747

- (Exam Topic 4)

Which can be used to determine whether a process is stable or has predictable performance?

- A. Matrix diagram
- B. Histogram
- C. Control chart
- D. Flowchart

Answer: C

NEW QUESTION 750

- (Exam Topic 4)

Which process involves identifying and documenting the logical relationships between project activities?

- A. Develop Schedule
- B. Sequence Activities
- C. Create WBS
- D. Applying leads and lags

Answer: B

NEW QUESTION 751

- (Exam Topic 4)

Which type of agreement is legal, contractual, and between two or more entities to form a partnership, joint venture, or some other arrangement as defined by the parties?

- A. Teaming
- B. Collective bargaining
- C. Sharing
- D. Working

Answer: A

NEW QUESTION 753

- (Exam Topic 4)

Which tool or technique is used in Close Procurements?

- A. Contract plan
- B. Procurement plan
- C. Closure process
- D. Procurement audits

Answer: D

NEW QUESTION 754

- (Exam Topic 6)

A project manager is searching for solutions that bring some degree of satisfaction to all parties in order to temporarily resolve a conflict. What conflict management technique is described in this situation?

- A. Withdraw/avoid
- B. Smooth /accommodate
- C. Collaborate/problem solve
- D. Compromise/ reconcile

Answer: D

NEW QUESTION 755

- (Exam Topic 6)

Match the project manager's sphere of influence with the associated primary role.

Project Manager's Sphere of Influence		Project Manager's Primary Role
Professional discipline		Use informal and formal networks for communication among the sponsor, team, and stakeholders.
The industry		Advocate the project's value in interactions with other project managers to effectively gain the required resources and funding.
The project		Apply and transfer knowledge continuously to related professions.
The organization		Keep abreast of emerging technology developments and the changing market.

- A. Mastered
- B. Not Mastered

Answer: A

Explanation:

Project Manager's Sphere of Influence		Project Manager's Primary Role
Professional discipline	The project	Use informal and formal networks for communication among the sponsor, team, and stakeholders.
The industry	Professional discipline	Advocate the project's value in interactions with other project managers to effectively gain the required resources and funding.
The project	The industry	Apply and transfer knowledge continuously to related professions.
The organization	The organization	Keep abreast of emerging technology developments and the changing market.

NEW QUESTION 758

- (Exam Topic 6)

Which tool should a project manager consider to deal with multiple sources of risk?

- A. An updated risk register
- B. Risk breakdown structure
- C. Issue log
- D. Stakeholder register

Answer: B

NEW QUESTION 761

- (Exam Topic 6)

Perform Quantitative Risk Analysis focuses on:

- A. compiling a list of known risks and preparing responses to them.

- B. assessing the probability of occurrence and Impact for every risk in the risk register.
- C. evaluating the contingency and management reserves required for the project.
- D. analyzing numerically the impact of individual risks on the overall project's time and cost objectives.

Answer: D

NEW QUESTION 762

- (Exam Topic 6)

What is the project manager's responsibility in Project Integration Management?

- A. Ensuring that requirements-related work is clarified in the project management plan
- B. Investing sufficient effort in acquiring, managing, motivating, and empowering the project team
- C. Combining the results in all other knowledge areas, and overseeing the project as a whole
- D. Developing a strategy to ensure effective stakeholder communication

Answer: A

NEW QUESTION 764

- (Exam Topic 6)

A project manager is working in an environment where requirements are not very clear and may change during the project. In addition, the project has several stakeholders and is technically complex.

Which strategies should the project manager take into account for risk management in this environment?

- A. Occasionally identify, evaluate, and classify risks.
- B. Review requirements and cross-functional project teams.
- C. Include contingency reserves and update the project management plan frequently.
- D. Frequently review incremental work products and update the requirements for proper prioritization.

Answer: D

NEW QUESTION 767

- (Exam Topic 6)

Which of the following is used as an input to prepare a cost management plan?

- A. Expert judgment
- B. Lessons learned
- C. Cost estimates
- D. Project management plan

Answer: D

NEW QUESTION 769

- (Exam Topic 6)

Which of the following sets are inputs to the Collect Requirements process?

- A. Project charter and requirements documentation
- B. Project charter and business documents
- C. Project charter and stakeholder requirements
- D. Business documents and requirements traceability matrix

Answer: B

NEW QUESTION 771

- (Exam Topic 6)

What is one of the main purposes of the project charter?

- A. Formal authorization of the existence of the project
- B. Formal acceptance of the project management plan
- C. Formal approval of the detailed project budget
- D. Formal definition of stakeholder roles and responsibilities

Answer: A

NEW QUESTION 773

- (Exam Topic 6)

Once the make-or-buy analysis is completed, which document defines the project delivery method?

- A. Procurement statement of work (SOW)
- B. Procurement strategy
- C. Terms of reference
- D. Change request

Answer: B

NEW QUESTION 775

- (Exam Topic 6)

Which project manager competency is displayed through the knowledge, skills, and behaviors related to specific domains of project, program, and portfolio management?

- A. Leadership management
- B. Technical project management
- C. Strategic management
- D. Business management

Answer: B

NEW QUESTION 778

- (Exam Topic 6)

Directing another person to get from one point to another using a known set of expected behaviors and the ability to lead a team and inspire them to do their jobs well is related to?

- A. Influence and challenge
- B. Innovation and administration
- C. Leadership and management
- D. Engagement and guidance

Answer: C

NEW QUESTION 779

- (Exam Topic 6)

In an adaptive or agile life cycle, how are the customer and sponsor involved in the project scope management activities?

- A. Involvement is needed only during project initiation.
- B. Minimal involvement of stakeholders is sufficient.
- C. They should be continuously engaged.
- D. They should be involved only during phase or deliverable reviews.

Answer: C

NEW QUESTION 780

- (Exam Topic 6)

A team receives four different requests from separate stakeholders related to one application Match each requirement with its corresponding type of change request.

Requirement		Type of Change Request
Add new functionality to the application		Update
Recover from a three-day delay		Defect repair
Reduce login time due to a corrupt login script		Preventive action
Install alarms to alert for non-conformances		Corrective action

- A. Mastered
- B. Not Mastered

Answer: A

Explanation:

Requirement		Type of Change Request
Add new functionality to the application	Add new functionality to the application	Update
Recover from a three-day delay	Install alarms to alert for non-conformances	Defect repair
Reduce login time due to a corrupt login script	Recover from a three-day delay	Preventive action
Install alarms to alert for non-conformances	Reduce login time due to a corrupt login script	Corrective action

NEW QUESTION 783

- (Exam Topic 6)

Match the project life cycle type with its corresponding definition.

Project Life Cycle Type		Definition
Adaptive		The detailed scope is defined and approved before the start of an iteration.
Incremental		The project scope is determined early in the project life cycle, but time and cost estimates are modified as an understanding of the product increases.
Predictive		The project's scope, time, and cost are determined in the early phases of the life cycle.
Iterative		The deliverable is produced through a series of iterations that successively add functionality within a predetermined timeframe.

- A. Mastered
- B. Not Mastered

Answer: A

Explanation:

ADAPTATIVE ITERATIVE PREDICTIVE
 INCREMENTAL

NEW QUESTION 787

- (Exam Topic 6)

Which statement is related to the project manager's sphere of influence at the organizational level?

- A. A project manager interacts with other project managers to detect common interests and impacts between their projects.
- B. A project manager facilitates communication between the suppliers and contractors on the project.
- C. A project manager considers the current industry trends and evaluates how they can impact or be applied to the project.
- D. A project manager may inform other professionals about the value of project management.

Answer: A

NEW QUESTION 790

- (Exam Topic 6)

A project manager held a meeting and listed all team members' ideas for improving the product on a white board. What data gathering technique did the project manager apply?

- A. Focus groups
- B. Interviews
- C. Brainstorming
- D. Delphi technique

Answer: C

NEW QUESTION 791

- (Exam Topic 6)

A project manager is in the process of working with stakeholders to meet their needs and expectations, and identifying and fostering communication and involvement. Which process does this typically represent?

- A. Monitor Stakeholder Engagement
- B. Monitor Communications
- C. Manage Communications
- D. Manage Stakeholder Engagement

Answer: D

NEW QUESTION 796

- (Exam Topic 6)

What organizational asset can influence the Plan Risk Management process?

- A. Corporate policies and procedures for social media, ethics, and security
- B. Organizational risk policy
- C. Stakeholder register templates and instructions

D. Organizational communication requirements

Answer: C

NEW QUESTION 797

- (Exam Topic 6)

A project manager has to share a status report with a new stakeholder and is trying to determine the level of detail to include in the report. Which document best details the information the project manager needs to make this decision?

- A. Organizational process assets
- B. Change management plan
- C. Communications management plan
- D. Resource management plan

Answer: C

NEW QUESTION 800

- (Exam Topic 6)

What tool should a project manager use to efficiently manage project resources?

- A. List of project resources
- B. Resource breakdown structure
- C. Resources detailed in the project scope
- D. Resource requirements

Answer: C

NEW QUESTION 802

- (Exam Topic 6) Given the following information. Activity A takes one week.

Activity B takes three weeks. Activity C takes two weeks. Activity D takes five weeks.

Activity A starts at the same time as Activity B. Activity C follows Activity B and Activity A. Activity D follows Activity C.

How long will it take to complete the project?

- A. Eleven weeks
- B. Nine weeks
- C. Eight weeks
- D. Ten weeks

Answer: D

NEW QUESTION 803

- (Exam Topic 6)

How can a project manager evaluate project team development?

- A. Produce team performance assessments.
- B. Hold weekly meetings to engage every member
- C. Complete a personal skill assessment on each team member
- D. Provide recognition awards to team members

Answer: A

NEW QUESTION 804

- (Exam Topic 6)

A project manager is experiencing a project with a high degree of change. Which type of stakeholder engagement does this project require?

- A. Discussing with management
- B. Escalating to the sponsors
- C. Engaging regularly with stakeholders
- D. Engaging only with decision makers

Answer: C

NEW QUESTION 807

- (Exam Topic 6)

A sponsor asks a project manager to provide a project's expected total costs based on its progress. What formula should the project manager use to determine this?

- A. Earned value (EV) / actual cost (AC)
- B. Estimate at completion (EAC) - AC
- C. Budget at completion (BAC) / cost performance index (CPI)
- D. EV - planned value (PV)

Answer: B

NEW QUESTION 809

- (Exam Topic 6)

Which is a list of organizational systems that may have an impact on a project?

- A. Internal policies, company procedures, and organizational resources
- B. Company culture, purchasing system, and project management information system
- C. Organizational structure, governance framework, and management elements
- D. Organizational process assets, enterprise environmental factors, and corporate knowledge

Answer: D

NEW QUESTION 810

- (Exam Topic 6)

What charts and (igures should project managers use during the Perform Quantitative Risk Analysis process?

- A. Tornado diagrams and influence diagrams
- B. Detectability bubble charts and probability and impact matrix
- C. Hierarchical charts and burndown charts
- D. Flow charts and responsible, accountable, consult, and inform (RACI) charts

Answer: A

NEW QUESTION 811

- (Exam Topic 6)

The project manager is explaining to others the essential business aspects of the project. To which skill category does this ability belong?

- A. Technical project management skills
- B. Time management skills
- C. Strategic and business management skills
- D. Leadership skills

Answer: C

NEW QUESTION 816

- (Exam Topic 6)

What communication methods would a project manager use for overall effective project communication?

- A. Interactive communication, push communication, interpersonal communication
- B. Interactive communication, push communication, pull communication
- C. Push communication, pull communication, interpersonal communication
- D. Pull communication, interactive communication, interpersonal communication

Answer: C

NEW QUESTION 818

- (Exam Topic 6)

Which knowledge area includes the processes to identify, define, and unify the various project management processes?

- A. Project Integration Management
- B. Project Communications Management
- C. Project Quality Management
- D. Project Risk Management

Answer: A

NEW QUESTION 821

- (Exam Topic 6)

The project manager is creating the communications management plan Which group of inputs Is required to begin?

- A. Work performance reports, change requests, and risk register
- B. Work performance data, project documents, and stakeholder engagement plan
- C. Project charter, project management plan, and project documents
- D. Work performance data, stakeholder register, and team management plan

Answer: C

NEW QUESTION 823

- (Exam Topic 6)

What is the difference between quality metrics and quality measurements?

- A. Quality metrics are product attributes and the measurement is the result of the Monitor and Control Project process
- B. Quality metrics are the result of the Monitor and Control Project process and the measurements are product attributes
- C. Quality metrics and measurements are the same concept
- D. Quality metrics is the general objective and the measurements are the specific objectives

Answer: A

NEW QUESTION 828

- (Exam Topic 6)

Which is the order of steps in the Procurement Management process?

- A. Identifying and planning procurement requirements, obtaining quotes or proposals, negotiating with vendors, contracting with selected vendors, and controlling procurements
- B. Identifying and planning procurement requirements, negotiating with vendors, contracting with selected vendors, obtaining quotes or proposals, and controlling procurements
- C. Controlling procurements, identifying and planning procurement requirements, obtaining quotes or proposals, negotiating with vendors, and contracting with selected vendors
- D. Obtaining quotes or proposals, identifying and planning procurement requirements, negotiating with vendors, contracting with selected vendors, and controlling procurements

Answer: A

NEW QUESTION 833

- (Exam Topic 6)

What are the inputs of the Estimate Costs process?

- A. Project management plan, work performance data, enterprise environmental factors, and organizational process assets
- B. Project management plan, project documents, enterprise environmental factors, and organizational process assets
- C. Cost baseline, enterprise environmental factors, benefits management plan, and organizational process assets
- D. Project management plan, enterprise environmental factors, basis of estimates, and organizational process assets

Answer: C

NEW QUESTION 834

- (Exam Topic 6)

How can a project manager determine if the project activities comply with organizational and project policies, processes, and procedures?

- A. Look at the quality metrics.
- B. Validate the scope.
- C. Review the quality checklist.
- D. Conduct a quality audit.

Answer: D

NEW QUESTION 839

- (Exam Topic 6)

A project manager is identifying the risks of a project. Which technique should the project manager use?

- A. Representations of uncertainty
- B. Prompt lists
- C. Audits
- D. Risk categorization

Answer: B

NEW QUESTION 841

- (Exam Topic 6)

Make-or-buy analysis is a tool and technique of which process?

- A. Conduct Procurements
- B. Plan Procurement Management
- C. Analyze Procurements
- D. Control Procurements

Answer: B

NEW QUESTION 842

- (Exam Topic 6)

In a functional organization, the director of an important stakeholder business group expressed concern to a line manager about the progress of the project. What should the line manager do next?

- A. Hold a face-to-face meeting with the project manager and warn them.
- B. Point the director to a link where they can take a look at the reports.
- C. Invite stakeholders to attend monthly progress review meetings.
- D. Ask the project manager to update the monthly status report distribution list.

Answer: C

NEW QUESTION 845

- (Exam Topic 6)

When managing costs in an agile environment, what should a project manager consider?

- A. Lightweight estimation methods can be used as changes arise.
- B. Agile environments make cost aggregation more difficult.

- C. Agile environments make projects more costly and uncertain.
- D. Detailed cost calculations benefit from frequent changes.

Answer: A

NEW QUESTION 848

- (Exam Topic 6)

The project manager is dividing the project scope into smaller pieces, and repeating this process until no more subdivisions are required. At this point the project manager is able to estimate costs and activities for each element. What are these elements called?

- A. Project activities
- B. Work packages
- C. Planning packages
- D. Project deliverables

Answer: B

NEW QUESTION 850

- (Exam Topic 6)

A project using the agile/adaptive approach has reached the Project Integration Management phase. What is the project manager's key responsibility during this phase?

- A. Defining the scope of the project
- B. Building a collaborative environment
- C. Creating a detailed project management plan
- D. Directing the delivery of the project

Answer: B

Explanation:

PMBOK pg. 74 Considerations for Agile Adaptive Environments: PJM's focus is on building a collaborative decision-making environment and ensuring team has ability to respond to changes.

NEW QUESTION 853

- (Exam Topic 6)

A project manager is monitoring and recording results of executing the quality management activities to assess performance and ensure the project outputs are complete, correct, and meet customer expectations. Which output is the project manager using?

- A. Approved change requests
- B. Verified deliverables
- C. Lessons learned
- D. Work performance data

Answer: B

NEW QUESTION 858

- (Exam Topic 6)

A company must implement sales software because it is opening a new branch in a foreign market. Although this software is used in every domestic branch, multiple changes are expected during the implementation because It is a foreign location. Which type of life cycle would the project manager use in this case?

- A. Predictive life cycle
- B. Waterfall life cycle
- C. Hybrid life cycle
- D. Product life cycle

Answer: C

NEW QUESTION 860

- (Exam Topic 6)

In which of the Risk Management processes is the project charter used as an input?

- A. Plan Risk Responses
- B. Implement Risk Responses
- C. Plan Risk Management
- D. Perform Quantitative Risk Responses

Answer: C

NEW QUESTION 865

- (Exam Topic 6)

A team was hired to develop a next generation drone. The team created a prototype and sent it to the customer for testing. The feedback collected was used to refine the requirements. What technique is the team using?

- A. Early requirements gathering
- B. Feedback analysis

- C. Progressive elaboration
- D. Requirements documentation

Answer: B

NEW QUESTION 867

- (Exam Topic 6)

Why is tailoring required in a project?

- A. Because a one-size-fits-all approach avoids complications and saves time.
- B. Because every project is unique and not every tool, technique, input, or output identified in the PMBOK Guide is required.
- C. Because tailoring allows us to identify the techniques, procedures, and system practices used by those in the project.
- D. Project managers should apply every process in the PMBOK Guide to the project, so tailoring is not required.

Answer: C

NEW QUESTION 871

- (Exam Topic 6)

In which sphere of influence is the project manager demonstrating the value of project management and advancing the efficacy of the project management office (PMO)?

- A. The organization
- B. The project
- C. The industry
- D. The product

Answer: B

NEW QUESTION 876

- (Exam Topic 6)

The project manager and the project team are having a meeting with the purpose of identifying risks. Which tools and techniques might help in this process?

- A. Prompt lists and data analysis
- B. Reports and representations of uncertainty
- C. Data analysis and risk audits
- D. Interpersonal and team skills and project management Information system

Answer: A

NEW QUESTION 878

- (Exam Topic 6)

Analyzing activity sequences, durations, resource requirements, and schedule constraints for project execution and monitoring and controlling relates to which process?

- A. Develop Schedule
- B. Control Schedule
- C. Estimate Activity Durations
- D. Define Activities

Answer: A

NEW QUESTION 882

- (Exam Topic 6)

In a large organization, with projects of different types and sizes, what kind of approach or method would be best to use?

- A. Predictive
- B. Adaptive
- C. A mix
- D. Agile

Answer: C

NEW QUESTION 883

- (Exam Topic 6)

At the beginning of an iteration, the team will work to determine how many of the highest-priority items on the backlog list can be delivered within the next iteration. Which of the following activities is done first?

- A. Create Work Breakdown Structure (WBS)
- B. Create Scope Baseline
- C. Collect Requirements
- D. Define Scope

Answer: D

NEW QUESTION 888

- (Exam Topic 6)

What does an S-curve from a Monte Carlo analysis show?

- A. Cumulative probability distribution representing probability of achieving a particular outcome
- B. Individual project risks or uncertainties that have the most potential impact on outcome
- C. Best alternative out of the possible solutions, incorporating associated risks and opportunities
- D. Diagram for all project uncertainties and their influence over a period of time

Answer: A

NEW QUESTION 890

- (Exam Topic 6)

What does expert judgment provide as an input to the resource management plan?

- A. Geographic distribution of facilities and resources
- B. Physical resource management policies and procedures
- C. Estimated lead times based on lessons learned
- D. Templates for the resource management plan

Answer: A

NEW QUESTION 895

- (Exam Topic 6)

A project manager uses their networking skills to build agreement with a difficult stakeholder. What level of influence did the project manager apply?

- A. Project level
- B. Organizational level
- C. Industry level
- D. Influential level

Answer: D

Explanation:

Relationship skills involving the development of extensive networks of people throughout the project manager's spheres of influence. These networks include formal networks such as organizational reporting structures. However, the informal networks that project managers develop, maintain, and nurture are more important. Informal networks include the use of established relationships with individuals such as subject matter experts and influential leaders. Use of these formal and informal networks allows the project manager to engage multiple people in solving problems and navigating the bureaucracies encountered in a project

NEW QUESTION 900

.....

Thank You for Trying Our Product

We offer two products:

1st - We have Practice Tests Software with Actual Exam Questions

2nd - Questons and Answers in PDF Format

CAPM Practice Exam Features:

- * CAPM Questions and Answers Updated Frequently
- * CAPM Practice Questions Verified by Expert Senior Certified Staff
- * CAPM Most Realistic Questions that Guarantee you a Pass on Your FirstTry
- * CAPM Practice Test Questions in Multiple Choice Formats and Updatesfor 1 Year

100% Actual & Verified — Instant Download, Please Click
[Order The CAPM Practice Test Here](#)