

352-001 Dumps

CCDE Written Exam

<https://www.certleader.com/352-001-dumps.html>



NEW QUESTION 1

As part of network design, two geographically separated data centers must be interconnected using Ethernet-over-MPLS pseudowire. The link between the sites is stable, the topology has no apparent loops, and the root bridges for the respective VLANs are stable and unchanging. Which aspect must be the part of the design to mitigate the risk of connectivity issues between the data centers?

- A. Enable 802.1d on one data center, and 802.1w on the other.
- B. Ensure that the spanning tree diameter for one or more VLANs is not too large.
- C. Enable UDLD on the link between the data centers.
- D. Enable root guard on the link between the data centers.

Answer: B

NEW QUESTION 2

Which load balancing option for IP-only traffic is the least efficient in terms of EtherChannel physical links utilization?

- A. On a per source IP address basis
- B. On a per destination MAC address basis
- C. On a per destination IP address basis
- D. On a per port number basis

Answer: B

NEW QUESTION 3

ACME Corporation is integrating IPv6 into their network, which relies heavily on multicast distribution of data. Which two IPv6 integration technologies support IPv6 multicast? (Choose two.)

- A. 6VPE
- B. 6PE
- C. dual stack
- D. ISATAP
- E. 6to4
- F. IPv6INIP

Answer: CE

NEW QUESTION 4

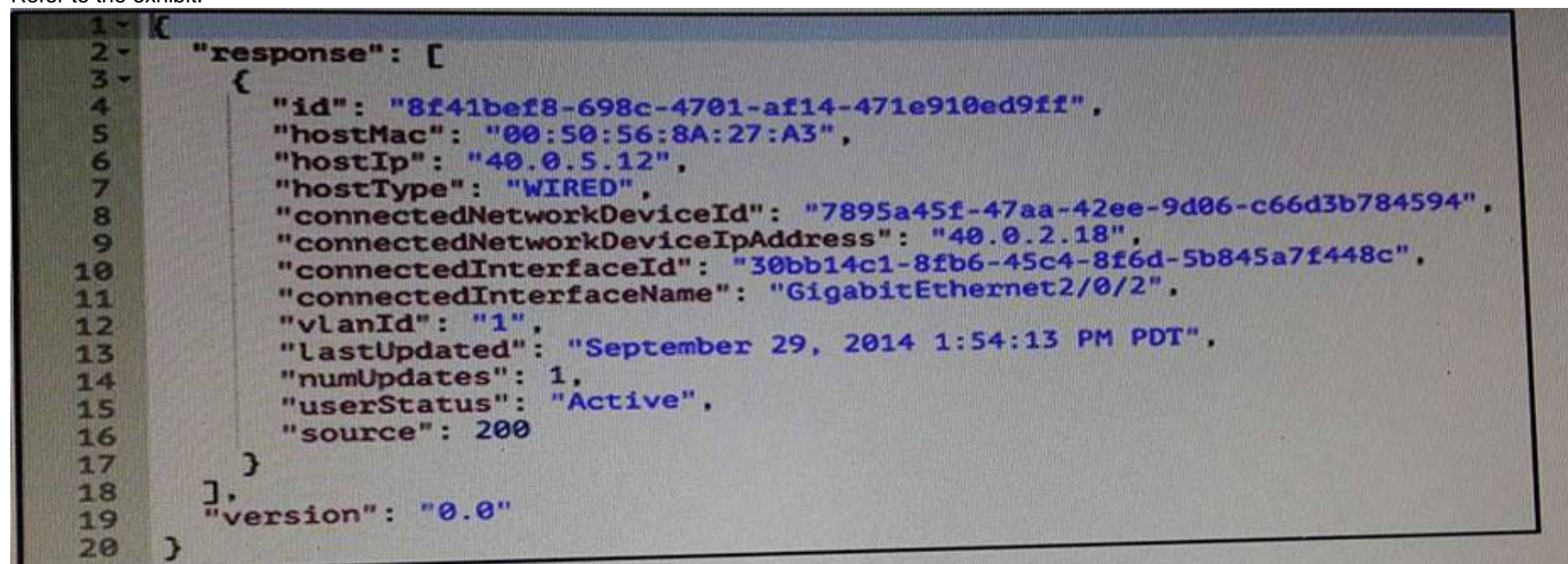
What is an implication of using route reflectors in an iBGP topology?

- A. Route reflection limits the total number of iBGP routers.
- B. Route reflection causes traffic to flow in a hub-and-spoke fashion.
- C. The manipulation of BGP attributes is not supported on the other routers than the route reflectors.
- D. Route reflectors can create routing loops when more than one router reflector is used in the same cluster.
- E. Multipath information is difficult to propagate in a route reflector topology.

Answer: E

NEW QUESTION 5

Refer to the exhibit.



```
1 {
2   "response": [
3     {
4       "id": "8f41bef8-698c-4701-af14-471e910ed9ff",
5       "hostMac": "00:50:56:8A:27:A3",
6       "hostIp": "40.0.5.12",
7       "hostType": "WIRED",
8       "connectedNetworkDeviceId": "7895a45f-47aa-42ee-9d06-c66d3b784594",
9       "connectedNetworkDeviceIpAddress": "40.0.2.18",
10      "connectedInterfaceId": "30bb14c1-8fb6-45c4-8f6d-5b845a7f448c",
11      "connectedInterfaceName": "GigabitEthernet2/0/2",
12      "vlanId": "1",
13      "lastUpdated": "September 29, 2014 1:54:13 PM PDT",
14      "numUpdates": 1,
15      "userStatus": "Active",
16      "source": 200
17    }
18  ],
19  "version": "0.0"
20 }
```

Which data format is used in this REST API call?

- A. JSON
- B. HTMLv5
- C. HTML
- D. XML
- E. BASH

Answer: A

NEW QUESTION 6

Which major block is not included in the ETSI network Function Virtualization reference framework?

- A. Network Function Virtualization Infrastructure
- B. Network Function Virtualization Management and Orchestration
- C. Network Function Virtualization Policy Manager
- D. Virtualized Network Function/ Element Management Systems

Answer: C

NEW QUESTION 7

Which IEEE standard is commonly used at the data link layer for an access network, in an IoT environment?

- A. Wireless Regional Area Network
- B. Low-Rate Wireless Network
- C. Wireless Local Area Network
- D. Broadband wireless metropolitan Network

Answer: B

NEW QUESTION 8

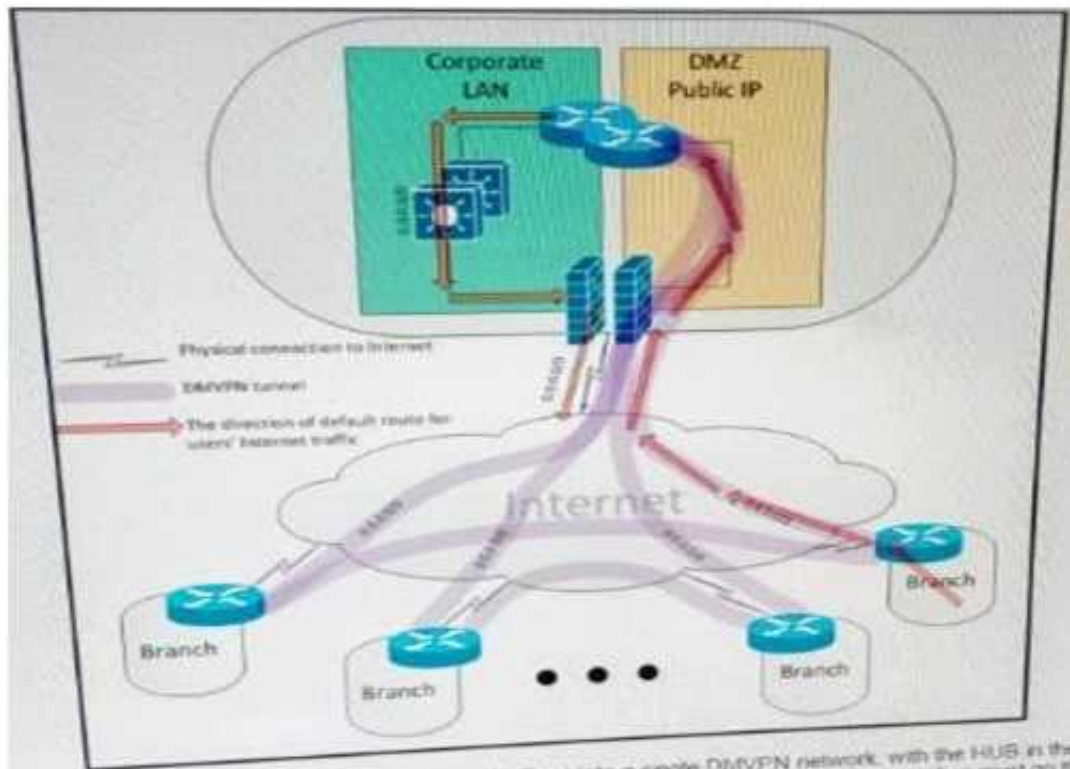
Which feature or technology that affects the operations of IPsec should be taken into account when designing an IPsec network using Authentication header?

- A. TCP MSS adjustment
- B. Certificate-based authentication
- C. Transform set
- D. NAT

Answer: D

NEW QUESTION 9

Refer to the exhibit.



A customer interconnected hundreds of branch offices into a single DMVPN network, with the HUB in the main data center. Due to security policies, the customer requires that the default route for all Internet traffic from the users at the branches must go through the tunnel and the only connections that are allowed to and from the branch router over the local internet circuit are the DMVPN tunnels. Which two combined actions must you take on the branch router to address these security requirements and keep the solution scalable? (Choose two)

- A. Place the WAN interface in a front-door VRF, leaving the tunnel interface in the default routing instance
- B. Protect the WAN interface by an inbound ACL that permits only IPsec-related traffic
- C. Implement a zone-based firewall that allows only IPsec-related traffic from zone UNTRUSTED to zone TRUSTED
- D. Add a host route for the public IP address of each remote branch and HUB routers that points directly to the local ISP, and add a default route that points to the tunnel
- E. Use a floating default route with the preferred path over the tunnel and a backup path over the Internet natively

Answer: AB

NEW QUESTION 10

When you design a network that uses IPsec, where can you reduce MTU to avoid network fragmentation?

- A. on both ends of the TCP connection
- B. on the side closest to the client

- C. on the side closest to the server
- D. in the WAN

Answer: A

NEW QUESTION 10

What is a design application of control plane policing?

- A. CPP protects the control plane from reconnaissance and or denial-of-service attacks
- B. CPP protects the forwarding plane by rate –limiting excessive routing protocol traffic
- C. CPP protects the forwarding plane by allowing legitimate traffic and dropping excessive traffic
- D. CPP drop malformed packet that are sent to the CPU

Answer: A

NEW QUESTION 14

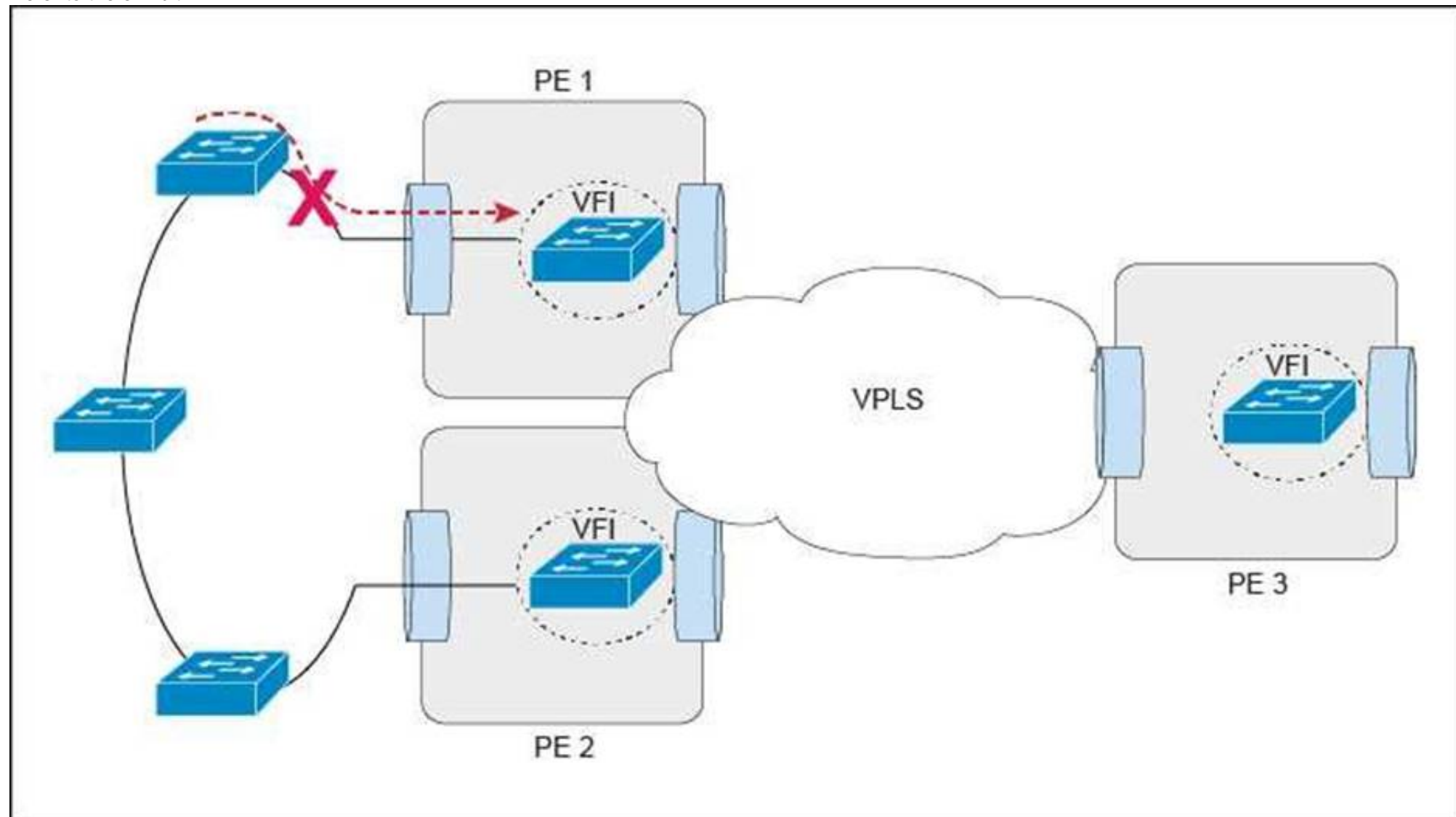
A regional ISP is running MPLS TE. These tunnels are configured manually using paths. Which technology centralizes the traffic engineering decisions to reduce operational complexity?

- A. BGP Link State
- B. DiffServ-TE
- C. TE autobandwidth
- D. Shared Risk link Group

Answer: C

NEW QUESTION 16

Refer to the exhibit.



This Layer 2 ring has 10 VLANs with 1000 MAC addresses in each VLAN. Which protocol or mechanism provides the shortest traffic outage if the link marked with “X” fails?

- A. Ethernet linear protection switching
- B. PVRST
- C. MST
- D. Ethernet ring protection switching

Answer: D

NEW QUESTION 21

An operations engineer asks for your help with a new switching deployment. The engineer confirms that STP is enabled on an edge switch, and a particular port is connected to another switch. The switch is not receiving configuration BPDUs, although it appears that everything is functioning correctly in the network. What is the design explanation?

- A. Bridge Assurance is enabled on the port
- B. Storm control broadcast is enabled on the port
- C. REP is enabled on the port

D. BPDU Guard is enabled on the port

Answer: C

NEW QUESTION 23

Which option is a design consideration when using routers in a distributed hardware architecture?

- A. Routing information is stored in the RIB and the FIB makes forwarding decisions as programmed on the line card hardware
- B. After a link failure occurs in the core, the RIB continues to forward the traffic while FIB convergence is in progress
- C. BGP routes are stored in the RIB and IGP routes are stored in the FIB
- D. IP routes are stored in the RIB and MPLS labels are stored in the FIB

Answer: A

NEW QUESTION 24

Which two techniques are used in an OSPF network design to slow down the distribution of topology information caused by a rapidly flapping link? (Choose two)

- A. LSA throttling
- B. SPF throttling
- C. IP event dampening
- D. Link-state incremental SPF
- E. Link-state partial SPF

Answer: AC

NEW QUESTION 25

A very large enterprise customer is migrating from EIGRP to IS-IS. What is your main concern in regards to change in the path packets take after the migration is complete?

- A. The areas sizes.
- B. The number of prefixes
- C. The redistribution points.
- D. The bandwidth and metrics of the links.

Answer: D

NEW QUESTION 28

A large enterprise network running IS-IS wants to deploy IGP traffic engineering, but they are concerned that the IS-IS default metrics are not flexible enough. Which feature must be enabled to provide traffic engineering with the minimum amount of changes?

- A. IS-IS Narrow Metrics
- B. IS-IS DIS
- C. IS-IS Wide Metrics
- D. IS-IS Multitopology

Answer: C

NEW QUESTION 31

You are implementing a one-to-many multicast solution for a large service provider network. Which technology offers optimal routing of multicast traffic?

- A. PIM sparse mode
- B. PIM SSM
- C. Anycast RP
- D. MSDP
- E. Bidirectional PIM.

Answer: B

NEW QUESTION 34

A network designer wants to improve a company network design due to multiple network crashes. Which technology would allow for the restore of a network connection without informing the Layer 3 protocol?

- A. Bidirectional Forwarding Detection
- B. automatic protection switching
- C. UDLD
- D. Ethernet OAM

Answer: B

NEW QUESTION 36

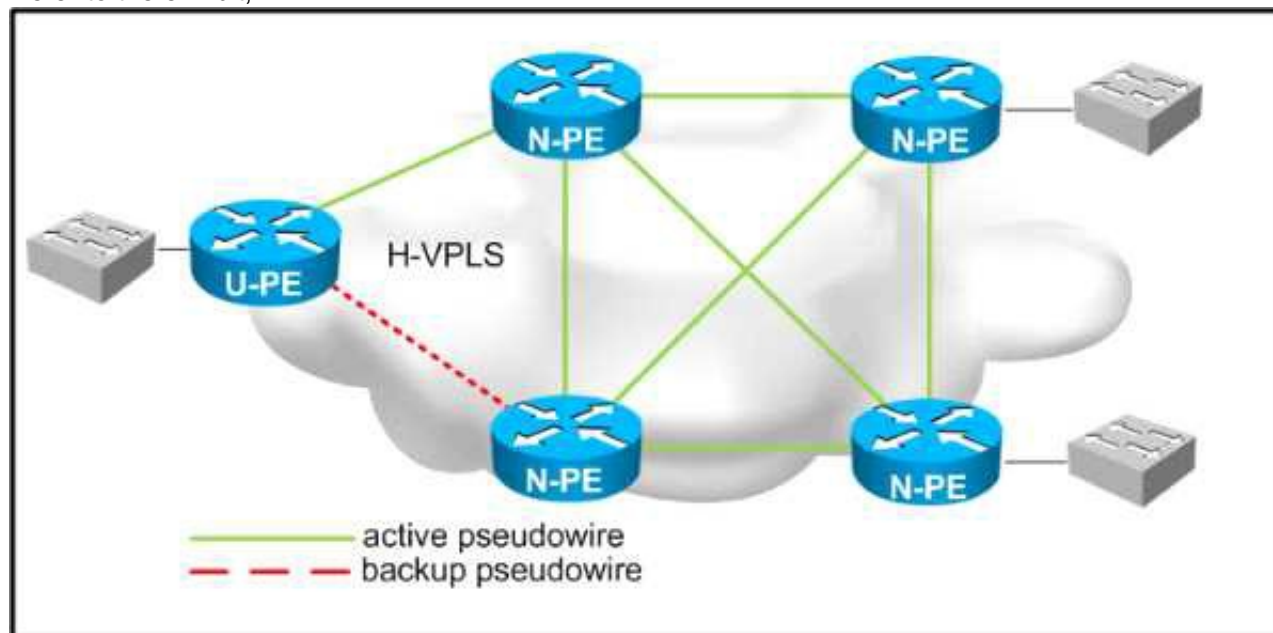
Which two components are the responsibility of the customers in a platform as a Service offering? (Choose two)

- A. Applications
- B. Infrastructure connectivity
- C. Hardware
- D. Data
- E. APIs

Answer: AD

NEW QUESTION 40

Refer to the exhibit,



Which two design considerations should be implemented on the pseudowire between N-PE and U-PE routers for a loop-free hierarchical VPLS service? (Choose two)

- A. Disable split horizon towards the U-PE router.
- B. Disable MAC learning on the U-PE router.
- C. Enable split horizon towards the N-PE routers.
- D. Disable MAC learning on the U-PE routers.
- E. Disable MAC learning on the U-PE routers.
- F. Enable split horizon towards the U-PE routers.
- G. Disable split horizon toward the N-PE routers.

Answer: AC

NEW QUESTION 43

A data center provider has designed a network using these requirements

Two data center sites are connected to the public internet

Both data centers are connected to different Internet providers

Both data centers are also directly connected with a private connection for the internal traffic can also be at this direct connection The data center provider has only /19 public IP address block

Under normal conditions, Internet traffic should be routed directly to the data center where the services are located. When one Internet connections fails to complete traffic for both data centers should be routed by using the remaining Internet connection in which two ways can this routing be achieved? (Choose two)

- A. One /20 block is used for the first data center and the second /20 block is used for the second data cente
- B. The /20 block from the local data center is sent out without path prepending and the /20 block from the remote data center is sent out with path prepending at both sites
- C. One /20 block is used for the first data center and the second /20 block is used for the second data cente
- D. Each /20 block is only sent out locall
- E. The /19 block is sent out at both Internet connections for the backup case to reroute the traffic through the remaining internet connection
- F. One /20 block is used for the first data center and the second /20 block is used for the second data cente
- G. The /20 block from the local data center is sent out with a low BGP local preference and the/20 block from the remote data center is sent out with a higher BGP local preference of both sites
- H. BGP will always load-balance the traffic to both data center sites
- I. One /20 block is used for the first data center and the second /20 block is used for the second data cente
- J. The /20 block from the local data center is sent out with a low BGP weight and the /20 block from the remote data center is sent out with a higher BGP weight at both sites
- K. The data center provider must have an additional public IP address block for this routing

Answer: AB

NEW QUESTION 44

An ISP provides VoIP and internet services to its customers. For security reasons, these services must

be transported in different MPLS Layer 3 VPNs over the ISP core network. The customer CEs do not have the ability to segment the services using different VLANs and have only one uplink interface that does not support VLAN tagging. How should you design the network to ensure that VoIP traffic that is received from the CE goes in the VoIP VPN, and that Internet traffic goes into the Internet VPN on the ISP PE devices?

- A. Use a secondary interface IP address to differentiate between VoIP and Internet traffic
- B. Extend the Layer 3 VPN toward the CE
- C. Enable NBAR on the PE to direct the traffic into the correct VRF
- D. Use a subinterface on the PE for each service, VoIP and Internet, with different subnets
- E. Use policy-based routing to direct traffic into the correct VRF

Answer: E

NEW QUESTION 48

Which two design aspects should a metro service provider consider when planning to deploy REP for his backbone? (Choose two.)

- A. Two REP segments can be connected redundantly at two points, one connection will be blocked as per the STP defined in IEEE 802.1d.
- B. UDLD can be enabled on REP interfaces to detect unidirectional failures.
- C. The guaranteed convergence recovery time is less than 50 ms for the local segment.
- D. A REP segment is limited to a maximum of seven devices.
- E. VLAN load balancing for optimal bandwidth usage is supported in any REP segment.

Answer: BE

NEW QUESTION 50

You are consultant network designer for a large GET VPN deployment for a large bank with International coverage. Between 1800 and 2000 remote locations connect to the central location through four hubs using an MPLS backbone and using two keys servers. The bank is concerned with security and replay attacks. Which two actions should you use to tune the GET VPN to meet the bank requirements? (Choose two)

- A. Increase the cryptographic key size.
- B. Replace unicast rekey with multicast rekey.
- C. Reduce the SAR clock interval duration
- D. Increase the TEK and KEK lifetime.
- E. Reduce the Dead Peer Detection periodic timer.

Answer: BC

NEW QUESTION 54

The enterprise customer ABC Corp will deploy a centralized unified communications application to provide voice, and instant messaging to their branch offices. Some of the branch offices are located in remote locations and are connected via a 1.5 Mb/s Layer 3 VPN connection. Which two ways are the most cost-effective to ensure that this new application is implemented properly? (Choose two)

- A. Use a low bitrate codec such as G 711
- B. Set voice activity detection to avoid sending packets when the conversations is silent
- C. Enable VRF-Lite on the CE router to create a separate voice VRF
- D. Set LFI on the WAN connections to interleave the small voice packets with the large data packets
- E. Set WAN optimization on the CE router to compress the voice packets for improved bandwidth utilization and performance
- F. Use a low bitrate codec such as G 729

Answer: BF

NEW QUESTION 56

In an OSPF network, users in a particular OSPF non-backbone area are complaining about slow access speeds to a shared corporate resource in another OSPF area. Traceroutes show that the users are taking a suboptimal default route to the destinations. Which solution will improve access speed?

- A. Make the area totally stubby so that the default can be followed along the best path
- B. Create a virtual link between the areas so that traffic can shortcut directly between them
- C. Leak specific summaries on the ABRs for the remote subnets in addition to the default
- D. Implement policy routing to channel the traffic in the optimal direction

Answer: C

NEW QUESTION 60

You are solving a design failure on a massive Hadoop cluster network that has an application with TCP incast behavior (also known as TCP Throughput collapse) affecting its many-to-one communications with packet loss at the last-hop network device. Which metric must be measured to ensure that the network provides the best performance for this application?

- A. Availability
- B. Bandwidth utilization
- C. Jitter values
- D. Buffer utilization

Answer: D

NEW QUESTION 65

A BGP route reflector in the network is taking longer than expected to converge during network changes. Troubleshooting has shown that the router cannot handle all the TCP acknowledgements during route updates. Which action can be performed to tune device performance?

- A. Increase the size of the large buffers
- B. Decrease the size of the small buffers
- C. Increase the keepalive timers for each BGP neighbor
- D. Increase the size of the hold queue

Answer: D

NEW QUESTION 70

ACME Agricultural requires that access to all network devices is granted based on identify validation, and an authentication server was installed for this purpose. Currently the network team uses a list of passwords based on regions to access the internal corporate network devices. Which protocol do you recommend to ensure identify validation from the authentication server to the corporate directory?

- A. HTTPS
- B. TACACS+
- C. SSH
- D. LDAP

Answer: D

NEW QUESTION 75

A large enterprise network has two data centers and a WLAN edge with a large hub-and spoke network. The complete network is configured as a single OSPF area, and spoke routers are connected to unreliable WAN links. Which two changes should you make to deploy LSA on the spoke routers? (Choose two)

- A. Place spoke routers in stub areas
- B. Make the hub routers ABR
- C. Make the hub routers ASBR
- D. Place spoke routers in totally stubby areas
- E. Keep the spoke routers in normal areas

Answer: BD

NEW QUESTION 78

A customer has a DMVPN network with EIGRP as the overlay protocol. EIGRP timers cannot be shortened, yet the customer requires the detection of lost connectivity between neighbors in less than three seconds. Which action achieves this requirement?

- A. Adjust the GRE keepalive timers
- B. Enable BFD
- C. Deploy IPsec dead peer detection
- D. Adjust the NHRP timers.

Answer: B

NEW QUESTION 82

Which two general SDN characteristics? (Choose two)

- A. Southbound interfaces are interfaces used between the control plane and the date plane
- B. OpenFlow is considered one of the first Northbound APIs used by SDN controllers
- C. Northbound interfaces are open interfaces used between the control plane and the data plane
- D. The separation of the control plane from the data plane
- E. OVSDB is an application database management protocol

Answer: AD

NEW QUESTION 86

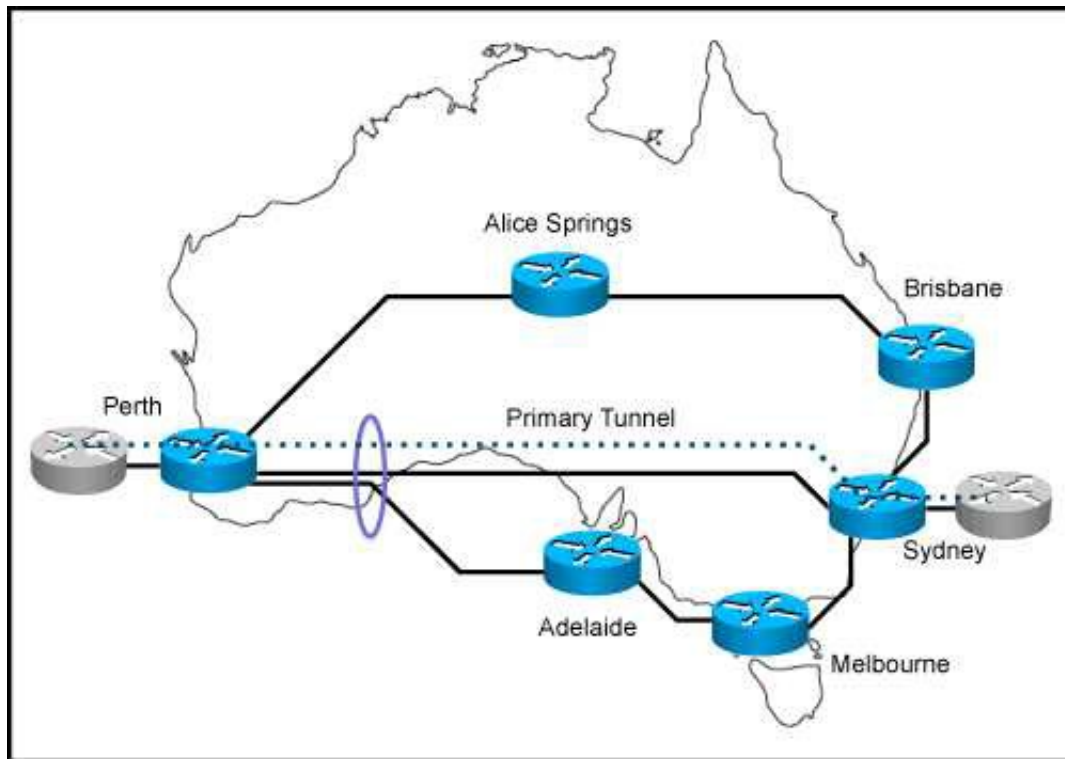
A switched network is being designed to support a manufacturing factory. Due to cost constraints, fiber-based connectivity is not an option. Which design allows for a stable network when there is a risk of interference from the manufacturing hardware in use on the factory floor?

- A. Design the network to include UDLD to detect unidirectional links and take them out of service.
- B. Design the network to include Ether Channel bundles to prevent a single-link failure from taking down a switch interconnection point.
- C. Design the network to include loop guard to prevent a loop in the switched network when a link has too much interference.
- D. Design the network to include Backbone Fast on all devices to accelerate failure convergence times.

Answer: B

NEW QUESTION 87

Refer to the exhibit.



You are designing MPLS-TE for this network. The links from Perth to Sydney and from Perth to Adelaide share the same optical fiber in one given segment. Which feature should you implement to eliminate the risk that a backup tunnel is installed over the same optical fiber as the primary one?

- A. Shared Risk Link Groups
- B. MPLS-TE Path Protection
- C. MPLS-TE auto-tunnel backup
- D. MPLS-TE Link protection

Answer: A

NEW QUESTION 90

An network is designed to use OSPF to reach eBGP peers. Which condition should be avoided in the design to potentially prevent the eBGP peers do not flap continuously in case of link failure?

- A. Disable BGP synchronization.
- B. Advertise IP addresses used on eBGP peer statement via a non-backbone OSPF area.
- C. Advertise via eBGP IP addresses used on eBGP peer statements.
- D. Use an ACL to block BGP in one direction.

Answer: C

NEW QUESTION 94

You work as a network designer for a company that is replacing their Frame Relay WAN with an MPLS VPN service, where the PE-to-CE routing protocol is BGP. The company has 3000 routes in their distribution routers, and they would like to advertise their access routers through the MPLS network. Their service provider, however, only supports 1000 prefixes per VRF. Which two design solutions can be applied to ensure that your access routers will be able to reach all devices in your network? (Choose two.)

- A. Configure the distribution routers to send a default route to the MPLS network
- B. Configure null routes and aggregate routes for the prefixes in your network on the distribution routers
- C. Summarize the routes on MPLS WAN interfaces of the distribution routers
- D. Use prefix lists on the distribution routers to control which routes are sent to MPLS network
- E. Configure the access routers to send a default route to the MPLS network

Answer: AC

NEW QUESTION 96

You are designing an IPv4 any source multicast redundancy solution. Which technology ensures the quickest RP convergence?

- A. Bootstrap router
- B. MSDP anycast RP
- C. Auto-RP
- D. Embedded RP

Answer: B

NEW QUESTION 97

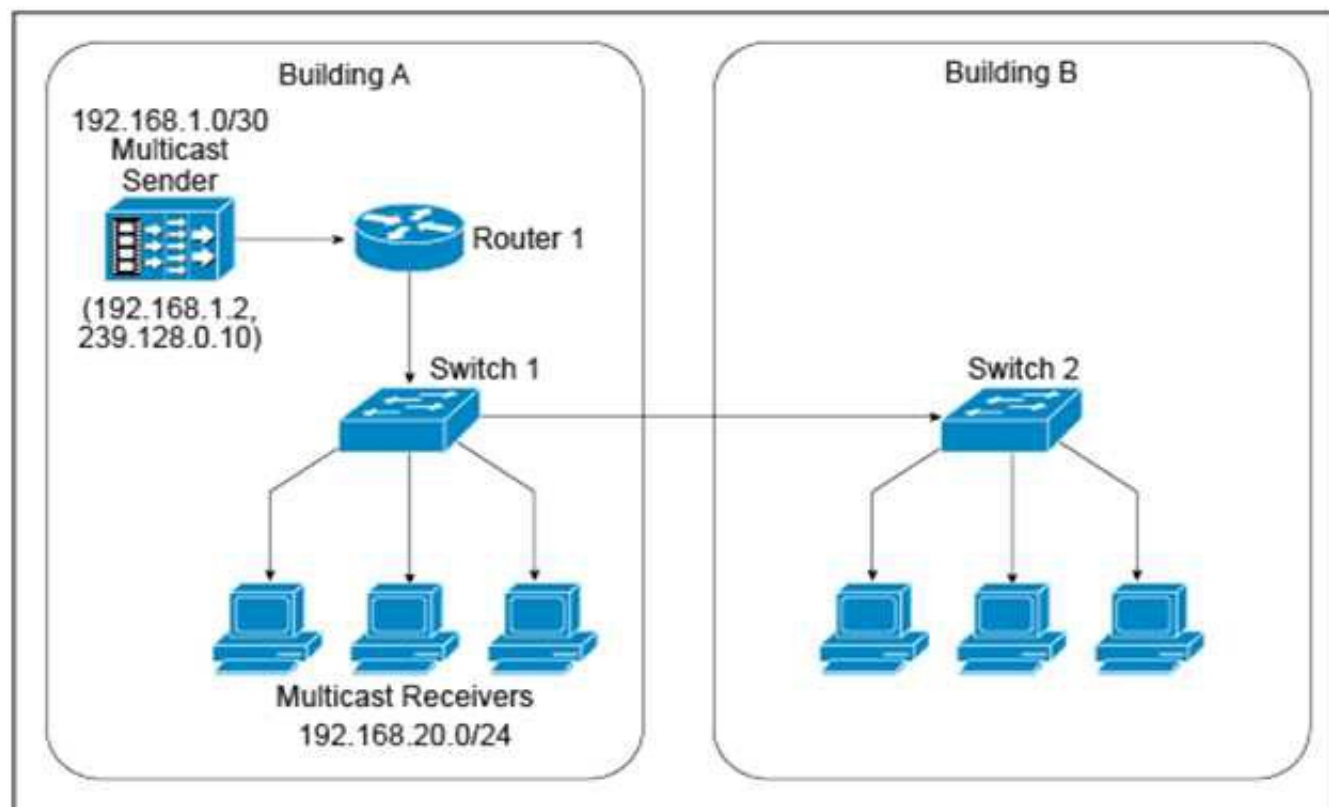
You are designing a new multisite data center network within the same city. You are using the newest routers that run OSPF and DWDM point-to-point interfaces for site-to-site connectivity. Your primary objective is to use the fastest possible method for interface failure detection. Which method achieves this objective?

- A. UDLD
- B. Interface event dampening
- C. LoS/AIS event faults
- D. Fast-hello timers

Answer: C

NEW QUESTION 99

Refer to the exhibit.



A new IPv4 multicast-based video-streaming service is being provisioned. During the design- validation tests, you realize that the link between the two buildings is carrying multicast traffic even when there are no receivers connected to the switch in Building B and despite IGMP snooping being enabled on both Layer 2 switches and IGMPv2 runs on the hosts. Which design change will prevent the multicast traffic from being unnecessarily flooded throughout the campus network?

- A. Enable PIM snooping on both Layer 2 switches.
- B. Enable multicast storm control on the link between Switch 1 and Switch 2.
- C. Use static Layer 2 MAC forwarding entries on Switch 1.
- D. Change the IPv4 multicast group address such that it excludes the usage of link-local MAC addresses.
- E. Ensure that Switch 1 is an IGMP querier.

Answer: D

NEW QUESTION 102

Which two options are design considerations when introducing FCoE into an existing network? (Choose two)

- A. The FCoE QoS markings may overlap with call signaling QoS markings
- B. Optical cabling is needed to transmit FCoE traffic between a server and its directly connected Ethernet switch
- C. The existing network must support a MTU of 3280 bytes
- D. Twinaxial cabling can be used to transmit FCoE traffic between a server and its directly connected Ethernet switch, if it is less than 10 meters
- E. All the servers in the data center must be retrofitted with converged Network Adapters

Answer: AE

NEW QUESTION 105

Which three network management requirements are common practices in network design? (Choose three)

- A. Ensure that all network devices have their clocks synchronized.
- B. Collect SNMP poll information for future regression analysis.
- C. Capture both ingress and egress flow-based packets, while avoiding duplication of flows.
- D. Look at average counters instead of instantaneous counters for inconsistent and bursty KPIs, such as CPU utilization and interface utilization.
- E. Validate data plane health, and application and services availability, with synthetic traffic.

Answer: ABD

NEW QUESTION 108

Which two options are considered risks or concerns when both the Internet and VPN service functions are on the same PE router? (Choose two.)

- A. Internet-based attacks can affect VPN customers.
- B. BGP cannot simultaneously run on the PE router that runs MPLS.
- C. MP-BGP prefixes increase routers' global routing tables, which affects network convergence.
- D. Failure on the PE router affects both VPN and Internet services.
- E. Customer performance can be affected by VPN traffic if Internet-based traffic is not prioritized on the PE

Answer: AD

NEW QUESTION 110

A service provider is designing a new backbone based on an IGP and MPLS what are two valid reasons for implementing MPLS-TE as well? (Choose two)

- A. MPLS-TE is required to reroute traffic within less than 1 second in case of a link failure inside the backbone
- B. MPLS-TE can detect and react to neighbor failures faster than IGPs can

- C. MPLS-TE is required to route different MPLS QoS Service classes through different paths
- D. MPLS-TE is required to create backup paths independently from the IGP
- E. MPLS-TE is a prerequisite for implementing RSVP in the backbone

Answer: CD

NEW QUESTION 111

You are asked to design an RSVP-TEL LSP protection solution for a large service provider network.
Which traffic protection mechanism is highly scalable and ensure that multiple LSPs always terminate at the same merge point?

- A. Shared explicit protection.
- B. Detour LSPs.
- C. 1:N protection.
- D. 1:1 protection.

Answer: C

NEW QUESTION 116

Which OSPF design consideration, with regards to simplicity and address preservation, must be considered when connecting two Layer 3 switches directly using 10 GBASE-T cabling and formatting an OSPF neighbor adjacency?

- A. Mesh groups must be included in the design
- B. The OSPF Hello and Dead timers must be tuned to detect failures as quickly as possible
- C. The OSPF network type must be set to point-to-multipoint
- D. An OSPF neighbor adjacency formed over loopback interfaces must be placed in Area 0
- E. The OSPF network type must be set to point-to-point

Answer: E

NEW QUESTION 119

A network is designed to use OSPF to reach eBGP peers. For eBGP peers to stay stable in case of a link failure, what condition should be avoided?

- A. Advertise IP addresses used on eBGP statements via a normal OSPF area
- B. Use an ACL to block BGP in one direction
- C. Disable BGP synchronization
- D. Advertise IP addresses used on eBGP peer statements via eBGP

Answer: D

NEW QUESTION 123

You must make IGP redesign recommendations for a client that has old equipment, with low CPU power and memory, that they do not have budget replace. They are very concerned about CPU load on routers. They are using IS-IS as the IGP in a single I1 area and all routers are connected to each other with point-to-point links. Which method do you recommend to reduce or limit CPU overhead caused by IS-IS?

- A. Use mesh groups to limit flooding of LSAs
- B. Implement wide style metrics for IS-IS on all routers
- C. Select a router to act as a pseudowire to limit topology synchronization
- D. Divide the router into multiple areas and implement address summarization

Answer: A

NEW QUESTION 126

You are hired to assist an enterprise customer to design their global WAN network. A protected DWDM circuit with disjoint fiber routes and guaranteed restoration times is ordered to connect two hub sites. Which option is a BFD design consideration in relation to protected DWDM?

- A. BFD failure detection must be faster than DWDM restoration time
- B. The BFD hello timer must match the DWDM circuit restoration time
- C. BFD failure detection must be longer than DWDM restoration time
- D. BFD cannot be used with protected DWDM

Answer: C

NEW QUESTION 128

An enterprise customer A with provider-independent address space is dual-homed to two ISP. Which two options, when combined, allow for customer A to efficiently achieve out-bound traffic load-balancing? (Choose two)

- A. Advertise Customer A subnets with a shorter AS path prepend to one of the ISPs than to the other
- B. Advertise Customer A subnets with different MED values to the two ISPs
- C. Accept a default route from both ISPs
- D. Make the CE connected to both ISPs route reflector
- E. Accept the routes originated on both ISPs and their direct peers

Answer: CE

NEW QUESTION 129

Which two options describe the advantages of using DWDM over traditional optical networks?
(Choose two)

- A. Inherent topology flexibility with intelligent chromatic dispersion
- B. Inherent topology flexibility and service protection provided without penalty through intelligent oversubscription of bandwidth reservation
- C. Inherent topology flexibility with built-in service protection
- D. Inherent topology flexibility with a service protection provided through a direct integration with an upper layer protocol
- E. Ability to expand bandwidth over existing optical infrastructure

Answer: AE

NEW QUESTION 131

What two options are significant drivers for 5G in IoT networks? (Choose two)

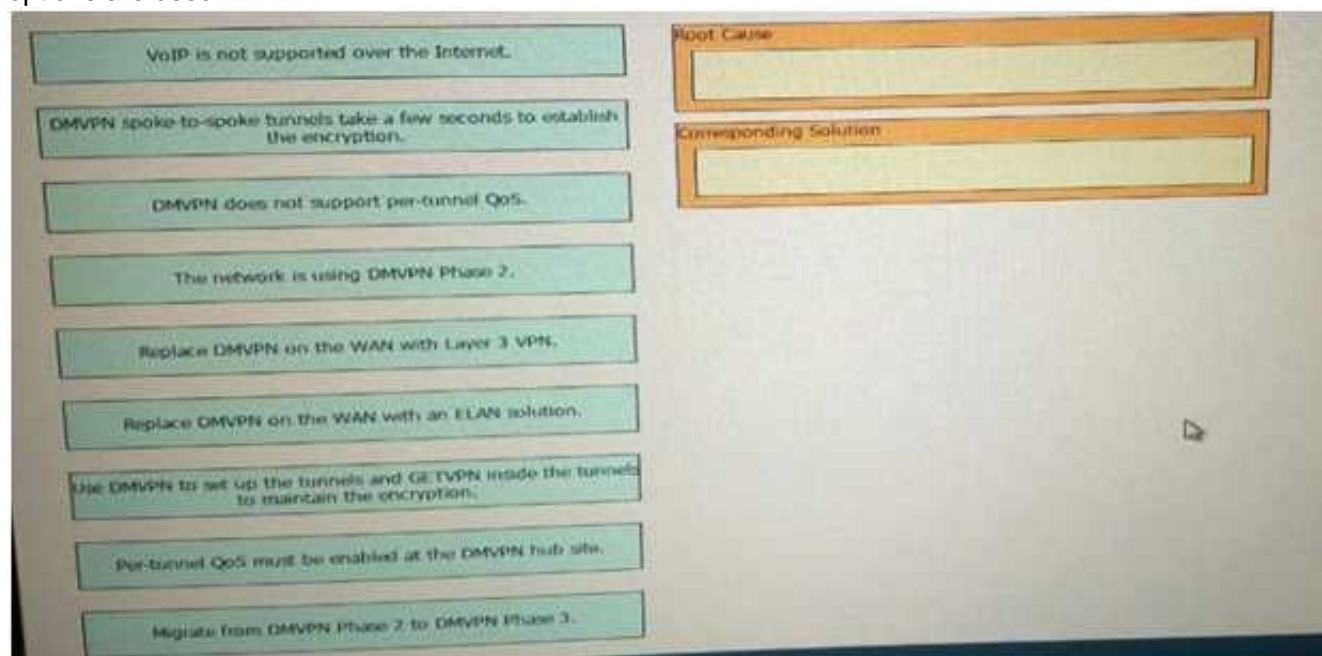
- A. Energy Efficiency
- B. Lower Latency
- C. Mass Connectivity
- D. Programmability
- E. Higher data rates

Answer: BC

NEW QUESTION 132

DRAG DROP

An enterprise customer has a national WAN network based on DMVPN over the Internet, with sites located throughout the country. The customer has recently deployed VoIP throughout the entire network, and users report that it takes up to 2 seconds to establish a telephone call to an IP telephone at another office network. Drag and drop the root cause and the corresponding design solution from the left onto the correct targets on the right. Not all options are used.



- A. Mastered
- B. Not Mastered

Answer: A

Explanation:

DMVPN spoke to spoke tunnels take a few second
Use DMVPN to set up tunnels and GETVPN for encryption

NEW QUESTION 135

.which two options are benefits of using Topology Independent Loop-Free Alternate in WAN design?
(Choose two)

- A. It provides backup convergence for all topologies by avoiding the post-convergence path
- B. It maximizes the network utilization by load-sharing across low bandwidth and edge links while IGP convergence is in progress
- C. No additional protocols are required in the MPLS network because it uses LDP labels to signal the backup path
- D. Although it requires enabling segment routing, SR does not have to be activated as the preferred forwarding method
- E. It can provide backup paths for IPv4, IPv6 and LDP traffic

Answer: AE

NEW QUESTION 137

A DMVPN network is being deployed for 10 branch sites to connect to the central headquarters over the Internet. Each branch site connects to the internet via a 1.5 Mb/s ADSL line, and the headquarters connects to the Internet over a 100Mb/s circuit limited to 20 Mb/s by the service provider. Which QoS mechanism if any, do you recommend at the headquarters location?

- A. Rate-limiting the 100 Mb/s circuit to 20 Mb/s
- B. Applying hierarchical QoS with parent policy for the overall circuit and child policy for the spokes
- C. Traffic shaping the 100 Mb/s circuit to 20 Mb/s
- D. QoS is not required in this instance due to maximum traffic being received by the branches being 15 Mb/s

Answer: B

NEW QUESTION 142

Which three network management requirements are common practices in network design? (Choose three)

- A. Collect RMON poll information for future regression analysis
- B. Ensure that all network devices have their clocks synchronized
- C. Look at average counters instead of instantaneous counters for inconsistent and bursty KPIs, such as CPU utilization and interface utilization.
- D. Collect SNMP poll information for future regression analysis
- E. Validate data plane health, application and services availability with synthetic traffic
- F. Capture both ingress and egress flow-based packet
- G. While avoiding duplications of flows

Answer: BCD

NEW QUESTION 144

Which two OSPF network type combinations can you use in the design that requires spoke-to-spoke direct traffic? (Choose two.)

- A. hub as point-to-multipoint and spokes as non-broadcast
- B. hub as point-to-multipoint and spokes as point-to-point
- C. hub as broadcast and spokes as non-broadcast
- D. hub as point-to-point and spokes as point-to-point

Answer: BC

NEW QUESTION 146

A customer requests that you determine how much of their remote branch traffic into a central data center is related to a call manager that resides in the data center. Which solution do you recommend?

- A. Enable NetFlow on branch routers
- B. Enable netFlow on central data center routers
- C. Perform SNMP polling of central data center routers
- D. Perform SNMP polling of branch routers
- E. Create an ACL on the local call manager switch with logging enabled
- F. Span traffic from the switch port on the call manager to a data analyzer

Answer: B

NEW QUESTION 148

The service provider that you work for wants to offer IPv6 internet service to its customers without upgrading all of its access equipment to support IPv6, which transition technology do you recommend?

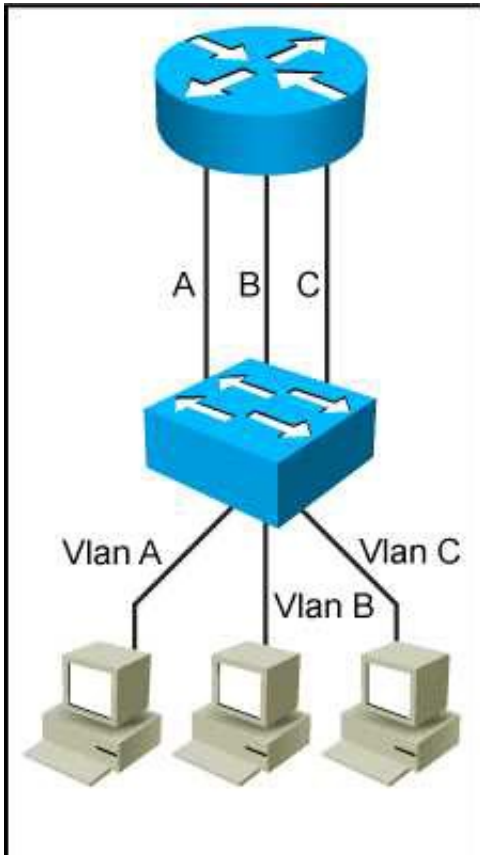
- A. NAT64
- B. CGN
- C. Dual-stack CPE
- D. 6RD

Answer: D

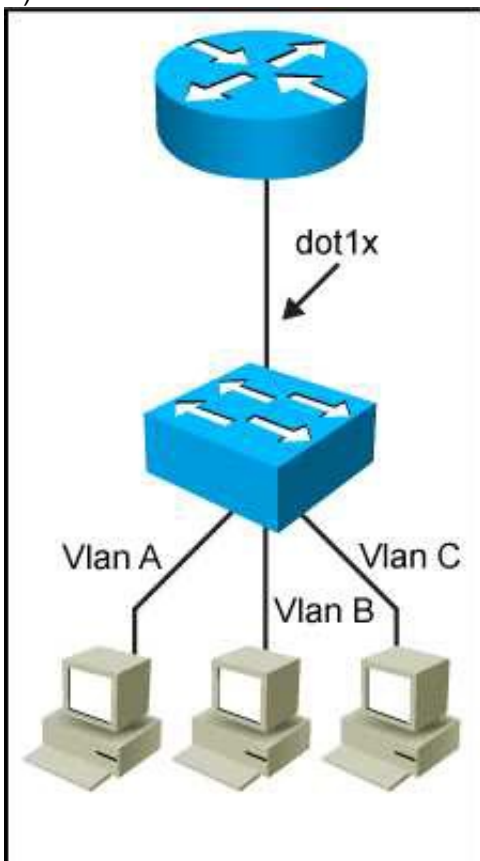
NEW QUESTION 151

Which network topology is characterized by a link fate-sharing situation?

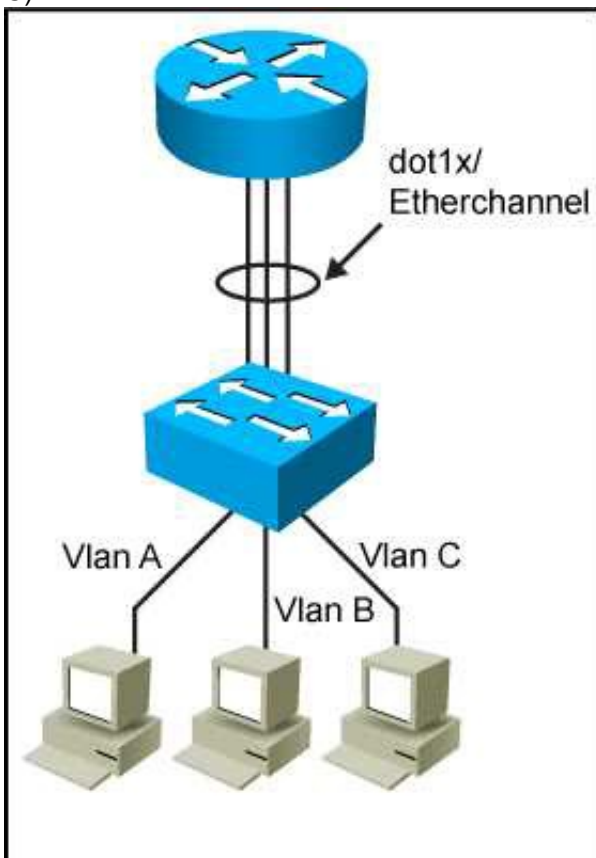
- A)



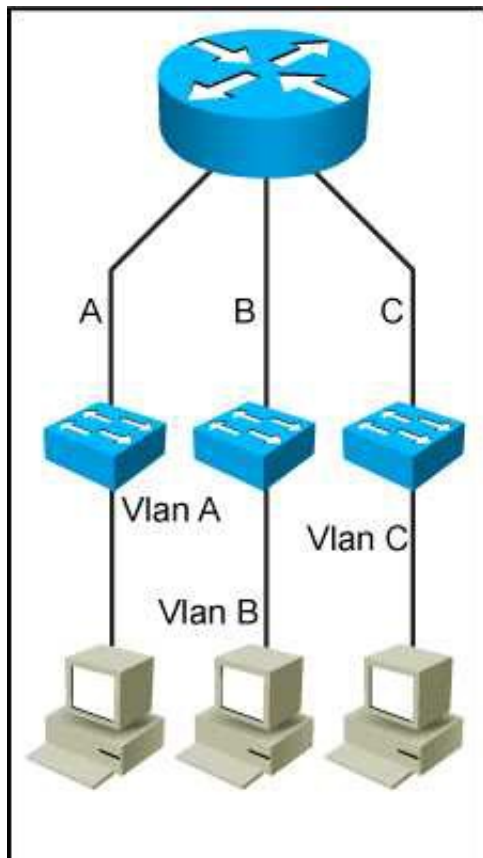
B)



C)



D)



- A. Exhibit A
- B. Exhibit B
- C. Exhibit C
- D. Exhibit D

Answer: B

NEW QUESTION 155

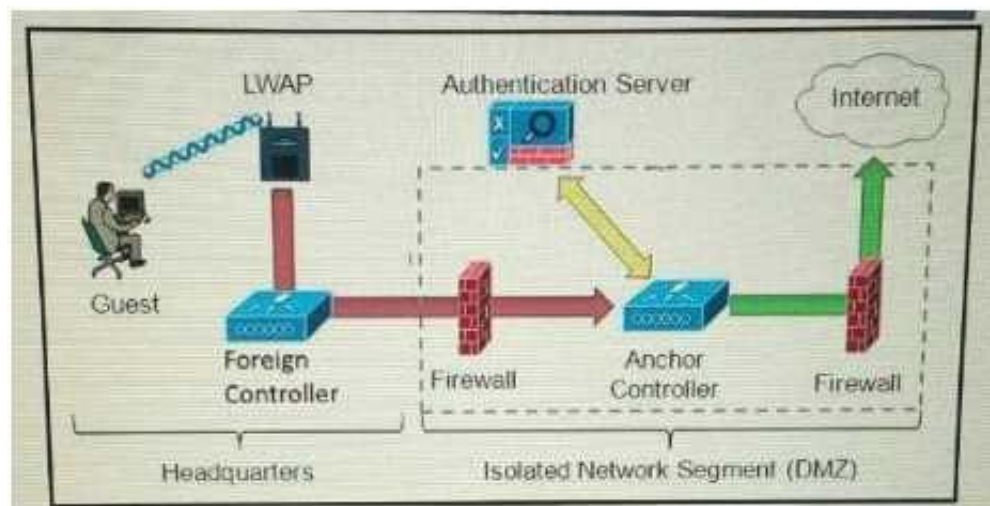
You are reviewing a new data center design for a customer. They chose to leverage a tunnel-based overlay technology for quick deployment and multitenant security. Which design concern can affect the availability across the data center?

- A. Nonoverlapping IP address space between the overlay networks
- B. MTU size on the underlay links
- C. Review of common paths on the underlay links
- D. Paper placement of STP root bridge in overlay networks

Answer: B

NEW QUESTION 158

Refer to the exhibit.



Which solution must be used to send traffic from the foreign wireless LAN controller to the anchor wireless LAN controller?

- A. Encapsulate packets into an EoIP tunnel and send them to the anchor controller
- B. Send packets from the foreign controller to the anchor controller via Layer 3 MPLS VPN or VRF-Lite
- C. Send packets from the foreign controller to the anchor controller via IPinIP or IPsec tunnel
- D. Send packets without encapsulation to the anchor controller over the routed network

Answer: A

NEW QUESTION 159

Which native mechanism does OSPF use to prevent loops in MPLS VPNs?

- A. CE devices that run OSPF set the DN bit toward the PE router
- B. PE devices that run OSPF clear the DN bit toward the CE router
- C. CE devices that run OSPF clear the DN bit toward the PE router
- D. Creation of PE to PE OSPF sham link across the MPLS-created super backbone
- E. PE routers verify OSPF domain IDs used by CE OSPF processes
- F. PE devices that run OSPF set the DN bit toward the CE router

Answer: F

NEW QUESTION 162

Your client is considering acquiring a new IPv6 address block so that all Ethernet interfaces on the network receive addresses based on their burned-in hardware addresses, with support for 600 VLANs. Which action do you recommend?

- A. Acquire a new /60 IPv6 network and subnet it into /70 networks, one per VLAN
- B. Acquire a new /58 IPv6 network and subnet it into /64 networks, one per VLAN
- C. Acquire a new /60 Ipv6 network and subnet it into /68 networks, one per VLAN
- D. Acquire a new/54 IPv6 network and subnet it into /64 networks , one per VLAN

Answer: D

NEW QUESTION 165

A healthcare customer requested that health statistics from their infrastructure devices are to be sent over their service provider MPLS network. Which protocol must be enabled?

- A. SNMPv3
- B. Syslog TLS
- C. syslog
- D. SNMPv2
- E. SSH

Answer: A

NEW QUESTION 170

Which option describes the fundamental design differences between an IP-based network design and a SAN-based?

- A. An IP-based design has redundant connectivity in the fabric and high amounts of east-west traffic, whereas a SAN-based design uses redundancy from a dual-attached host, which uses separate fabrics and has very little east-west traffic
- B. An IP-based design has redundancy from the host and high amounts of east-west traffic, whereas a SAN-based design uses redundancy in the fabric and very little east-west traffic
- C. An IP-based design has redundant connectivity in the fabric and high amounts of east-west traffic, whereas a SAN-based design uses zoning based redundancy which uses separate fabrics and has very little east-west traffic
- D. An IP-based design has redundant connectivity in the fabric and very little east-west traffic, whereas a SAN-based design uses redundancy in the host, which uses separate fabrics and has high amounts of east-west traffic

Answer: A

NEW QUESTION 175

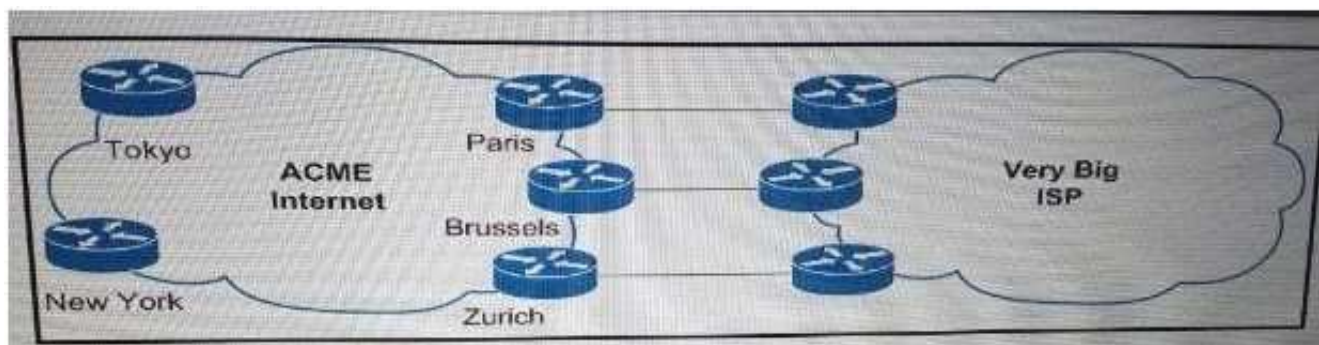
Which three options are IS-IS design considerations when connecting two Layer 3 switches directly using a 10 GBASE-T cabling and formatting an IS-IS neighbor adjacency?

- A. The default IS-IS network type is point-to-point so a DIS is not elected
- B. A DIS is elected between the IS-IS neighbors and the elected DIS is pre-empted if router with a higher system ID is connected
- C. The area, levels, and interface MTU parameters must match, and system MTU must be unique for two IS-IS routers to become adjacent
- D. Faster IS-IS hello and dead timers increase bandwidth and CPU use, and may cause instability
- E. The IS-IS hello and dead timers should be tuned to detect failures as quickly as possible
- F. A DIS is elected between the IS-IS neighbors and the elected Dis is pre-empted if a router with a lower system ID is connected
- G. The hello and dead timers must match for two IS-IS routers to become adjacent

Answer: CDF

NEW QUESTION 176

Refer to the exhibit.



Service provider ACME Internet just added a 100 GB/s peering in Paris that it wants to use by default for outbound traffic to Big ISP. Which routing policy achieves the desired outcomes?

- A. Use traffic engineering by injecting a preferred LOCAL_PREF attribute to routes advertised from Very Big ISP in Paris
- B. Apply an import policy in New York that adds a Weight attribute to routes learned from Very Big ISP via Paris
- C. Apply an export policy in Paris by applying a MED or community attribute with a preference that very Big ISP act upon
- D. Apply an import policy hat filters longer prefixes than /24 in Brussels and zurich

Answer: A

NEW QUESTION 178

What is design considerations of policy-based routing?

- A. It decreases failure detection time
- B. It can create microloops during network reconvergence
- C. It routes traffic destined to a set of users through different exit points
- D. It uses RSVP to differentiate traffic flows, so queuing mechanisms can prioritize them

Answer: B

NEW QUESTION 179

A retail company connects its 250 branches across the globe to the core using MPLS Layer 3 VPN. The company is planning to migrate its traditional telephony services to Volp, in order to reduce the cost of international calls. What are the two primary concerns when implementing this migration? (Choose two)

- A. Jitter
- B. Call routing design
- C. SRST
- D. MTU
- E. Available bandwidth

Answer: AE

NEW QUESTION 183

Which two items are required for data plane hardening of an infrastructure device? (Choose two)

- A. Disable unused services
- B. Routing protocol authentication
- C. SNMPv3
- D. Redundant AAA servers
- E. Infrastructure ACLs
- F. Warning banners
- G. Control Plane Policing

Answer: AE

NEW QUESTION 186

Which two control plane policer design options should you consider to achieve high availability? (Choose two)

- A. Control plane policers require that adequate protocols overhead are factored in to allow protocol convergence
- B. Control plane policers are really needed only on externally facing devices
- C. Control plane policers can cause the network management systems to create false alarms
- D. Control plane policers are enforced in hardware to protect the software path, but they are hardware platform-dependent in terms of classification ability
- E. Control plane policers must be processes before a forwarding decision is made

Answer: DE

NEW QUESTION 187

Which effect of designing a Layer 2 network using the PortFast fast feature with PVST+ is true?

- A. It shuts down the port when receiving the superior BPDU
- B. It accelerates the network convergence on the trunk uplinks
- C. In combination with BPDU filtering, it causes the switch port to stay in the forwarding state
- D. It moves the switch port directly to the forwarding state

Answer: D

NEW QUESTION 191

How must queue sizes be designed to ensure that an application functions correctly?

- A. The default queue sizes are good for any deployment
- B. Each individual device queuing delay in chain must be less than or equal to the application required delay
- C. The queuing delay on every device in chain must be exactly the same
- D. The sum of the queuing delay of all devices in chain must be less than or equal to the application required delay

Answer: D

NEW QUESTION 196

Your customer asked you to redesign there is-IS network to reduce to a minimum the number of adjacencies because the network has several routers running L1/L2 mode on the sme Ethernet segment. Which action do you recommend?

- A. Define only one router on the segment to be DIS
- B. Make the interface priority on the backup DIS lower than the primary DIS
- C. Change half the routers to L1 routers and half to L2 routers
- D. Change all routers to a single-level area

Answer:

D

NEW QUESTION 199

A data center design requires monitoring of their business critical voice and video services accessed by remote locations. Which two items are applicable? (Choose two)

- A. If multiple applications share the same DSCP or CoS values, NBAR can be utilized
- B. The applications being monitored must be assigned a unique CoS value
- C. If multiple applications share the same the same DSCP or CoS values, IPFIX can be utilized
- D. The applications being monitored must be assigned a unique QoS profile
- E. The applications being monitored must be assigned unique DSCP values
- F. The reporting data must be assigned to a QoS profile to ensure accurate statistics

Answer: CF

NEW QUESTION 200

Which MPLS attribute is required for links to carry a given MPLSTE tunnel?

- A. TE tunnel destination address
- B. Tunnel path-selection metric
- C. Affinity
- D. Next-hop backup tunnel

Answer: A

NEW QUESTION 203

After a large EIGRP network had automatic summarization enabled throughout, it started experiencing routing loops. Which action should you take to quickly resolve the routing loops yet to perform summarization?

- A. Redistribute connected routes at major IP networks boundaries
- B. Redesign the IP addressing scheme
- C. Increase the AD of the automatically summarized routes
- D. Replace the automatic summarization with more specific summary routes

Answer: D

NEW QUESTION 206

You are working on a network design plan for a company with approximately 2000 sites. The sites will be connected using the public Internet. You plan to use private IP addressing in the network design, which will be routed without NAT through an encrypted WAN network. Some sites will be connected to the Internet with dynamic public IP addresses, and these addresses may change occasionally. Which VPN solution will support these design requirements?

- A. GET VPN must be used, because DMVPN does not scale to 2000 sites.
- B. DMVPN must be used, because GET VPN does not scale to 2000 sites.
- C. GET VPN must be used, because private IP addresses cannot be transferred with DMVPN through the public Internet.
- D. DMVPN must be used, because private IP addresses cannot be transferred with GET VPN through the public Internet.
- E. GET VPN must be used, because DMVPN does not support dynamic IP addresses for some sites.
- F. DMVPN must be used, because GET VPN does not support dynamic IP addresses for some sites.

Answer: D

NEW QUESTION 211

A Mobile Service Provider would like to design and deploy an Ethernet service which has similar physical link failover/failback characteristics on the active/backup links as the APS/MSP SONET properties. Which Layer 2 service addresses should be considered to address this design feature?

- A. Port-Channel
- B. MLPPP
- C. Flex Link
- D. Ethernet Pseudowire

Answer: C

NEW QUESTION 216

What is an advantage of placing the IS-IS flooding domain boundary at the core Layer in a three-layer hierarchical network?

- A. The L1 and L2 domains can easily overlap
- B. The L2 domain is contained and more stable
- C. It can be applied to any kind of topology
- D. It reduces the complexity of the L1 domains

Answer: A

NEW QUESTION 220

How can EIGRP topologies be designed to converge as fast as possible in the event of a point-to-point link failure?

- A. Build neighbor adjacencies in a triangulated fashion
- B. Build neighbor adjacencies in a squared fashion
- C. Limit the query domain by use of distribute lists
- D. Limit the query domain b use of summarization
- E. Limit the query domain by use of default routes

Answer: D

NEW QUESTION 222

Which aspect is a significant disadvantage of containers?

- A. Security
- B. Time to deploy
- C. Inefficiency
- D. Reduced operational overhead
- E. Resource consumption

Answer: A

NEW QUESTION 223

A new video multicast application is deployed in the network. The application team wants to use the 239.0.0.1 multicast group to stream the video to users. They want to know if this choice will impact the existing multicast design. What impact will their choice have on the existing multicast design?

- A. Because 239.0.0.1 is a private multicast range, a flood of PIM packets that have to be processed by the CPU and hosts will be sent by the routers in the network.
- B. Because 239.0.0.1 is a private multicast range, the rendezvous point has to send out constant group updates that will have to be processed by the CPU and hosts.
- C. The multicast application sends too many packets into the network and the network infrastructure drops packets.
- D. The 239.0.0.1 group address maps to a system MAC address, and all multicast traffic will have to be sent to the CPU and flooded out all ports.

Answer: B

NEW QUESTION 224

Which two conditions must be met for EIGRP to maintain an alternate loop-free path to a remote network? (Choose two)

- A. The Reported Distance from a successor is lower than the local Feasible Distance
- B. The Reported Distance from a successor is higher than the local Feasible Distance
- C. A feasible successor must be present
- D. The feasible Distance from a successor is lower than the local Reported Distance
- E. The feasibility condition do not need to be met

Answer: AC

NEW QUESTION 226

When is it required to leak routes into an IS-IS level 1 area?

- A. When MPLS L3VPN PE devices are configured in the level 1 areas
- B. When unequal cost load balancing is required between the backbone and nonbackbone areas
- C. When a multicast RP is configured in the nonbackbone area
- D. When equal cost load balancing is required between the backbone and nonbackbone areas

Answer: A

NEW QUESTION 229

When designing fast convergence on a network using loop-free alternate, on which two basis can the next-hop routes be precomputed? (Choose two)

- A. Per neighbor
- B. Per network type
- C. Per link
- D. Per prefix
- E. Per failure type

Answer: CD

NEW QUESTION 232

A company requires to connect two data center sites using a hub-and-spoke design. There are 2000 remote sites. It is required to transfer MPLS labeled packets over the public Internet using one router at each remote site. These MPLS labeled packets must be encapsulated inside IP packets. Which solution must be used to simplify this network design?

- A. GET VPN encrypts the MPLS packets with IPsec.
- B. DMVPN dynamically builds GRE tunnels with MPLS encapsulation inside.
- C. Site-to-site IPsec without GRE encapsulates the MPLS packets.
- D. PPPoE encapsulates the MPLS packets
- E. L2TPv3 encapsulated the MPLS packets

Answer: B

NEW QUESTION 233

Which are two open-source SDN controllers? (Choose two)

- A. Big Cloud Fabric
- B. OpenContrail
- C. Application Policy Infrastructure Controller
- D. Virtual Application Networks SDN controller
- E. OpenDaylight

Answer: BE

NEW QUESTION 236

Which two statements regarding to QoS marking are true? (Choose two)

- A. Shaping is one of the ways that packets can be remarked
- B. Class-based marking occurs after packet classification
- C. 802.1Q/p CoS bits and IP Precedence are both layer 3 marking fields
- D. QoS marking establishes a trust boundary that scheduling tools depend on
- E. MPLS EXP and DSCP are both layer 2 marking fields

Answer: BC

NEW QUESTION 238

As part of network design, two geographically separated data centers must be interconnected using Ethernet-over-MPLS pseudowire. The link between the sites is stable, the topology has no apparent loops, and the root bridges for the respective VLANs are stable and unchanging. Which aspect must be the part of the design to mitigate the risk of connectivity issues between the data centers?

- A. Enable Spanning Tree on one data center, and Rapid Reconfiguration of Spanning tree on the other
- B. Ensure that the spanning tree diameter for one or more VLANs is not too large.
- C. Enable UDLD on the link between the data centers.
- D. Enable root guard on the link between the data centers.

Answer: B

NEW QUESTION 240

An enterprise campus is adopting a network virtualization design solution with these requirements
It must include the ability to virtualize the data plane and control plane by using VLANs and VRFs
It must maintain end-to-end logical path transport separation across the network
resources available grouped at the access edge
Which two primary models can this network virtualization design be categorized? (Choose two)

- A. Path isolation
- B. Session isolation
- C. Group virtualization
- D. Services virtualization
- E. Edge isolation

Answer: AD

NEW QUESTION 243

A large ISP is analysing which IGP meets these following requirements
Network must be resilient against unstable MTU in one side of newly released transmission pieces of equipment
Network must support MPLS traffic engineering solution for future use
Which IGP must be selected and why?

- A. ISIS : in case MTU changes your TE tunnels keep the LSP stable
- B. OSPF: adjacency remains up even if MTU changes
- C. OSPF: in case MTU changes your TE tunnels keep the LSP stable
- D. ISIS: adjacency remains up even if MTU changes

Answer: D

NEW QUESTION 244

Which statement about SDN framework environment is true?

- A. The control plane functions is split between a SDN controller and the networking element
- B. The data plane is pulled from the networking element and put in a SDN controller
- C. The data plane is controlled by a centralized SDN element
- D. The control plane is pulled from the networking element and put in a SDN controller
- E. The control plane and data plane is pulled from the networking element and put in a SDN controller and SDN agent

Answer: D

NEW QUESTION 245

On a large enterprise security solution, which two options are IDS or IPS modes of operation?
(Choose two)

- A. Transparent mode
- B. Routed mode
- C. Inline mode
- D. Traffic discovery mode
- E. Promiscuous mode

Answer: C&E

NEW QUESTION 247

DRAG DROP

Drag the IT standards on the left to their network design application on the right. Not all applications will be used.	
FCAPS	Change management
ITIL®	Governance framework
CMIP	OSI-specified network management protocol
TMN	Telecommunications systems management framework
	Network management framework
	Enterprise architecture framework

- A. Mastered
- B. Not Mastered

Answer: A

Explanation:

ITIL®
Governance framework
CMIP
TMN
FCAPS
Enterprise architecture framework

NEW QUESTION 249

DRAG DROP

Drag the QoS tools on the left and drop each into its corresponding function on the right.	
Policing	Addresses congestion that is due to speed mismatches when CIR is not exceeded.
Marking	Drops traffic to ensure that the committed or offered rate are not exceeded.
Buffering	Allows drops to be minimized based on traffic classification when CIR is exceeded.
WRED	Allows for consistent classification within a DiffServ domain.
Shaping	Avoids congestion via selective traffic dropping within the network.
ECN	Avoids congestion by end hosts reducing their traffic rates when congestion is detected.

- A. Mastered
- B. Not Mastered

Answer: A

Explanation:

Buffering
Policing
Shaping
Marking
WRED
ECN

NEW QUESTION 253

DRAG DROP

A company recently had an outage after an employee plugged a switch into the corporate network, causing a change in the root bridge selection. You have been tasked to redesign the network to avoid such outages in the future. Drag the Rapid PVST+ features (on the left) that will prevent reoccurrences of this incident and drop them into their definitions on the right.	
Root Guard	A deterministic method to set the root bridge and the backup root bridge for each VLAN
BPDU Guard	Prevents switches from propagating old or corrupt VLAN information through the Layer 2 network
DTP	Puts the interface into an errdisable state if a connected device attempts to participate in STP
VTP Set to Transparent	A preventive method of protecting an interface from accepting a superior BPDU
PortFast	
Spanning-Tree Priority Changed from Default	

- A. Mastered
B. Not Mastered

Answer: A

Explanation:

Spanning-Tree Priority Changed from Default
VTP Set to Transparent
BPDU Guard
Root Guard

NEW QUESTION 255

DRAG DROP

You are designing a new data center network. Drag and drop new data center requirements on the left into the appropriate design principle on the right.

design a VLAN dedicated for storage traffic

fault isolation

design for server NIC teaming

redundancy

design a single VLAN per access switch

segmentation

design diverse cabling cabinets

- A. Mastered
B. Not Mastered

Answer: A

Explanation:

design a single VLAN per access switch

design for server NIC teaming

design a VLAN dedicated for storage traffic

NEW QUESTION 260

DRAG DROP

As a network designer for a major multiservice network, your first assignment is to improve the IS-IS convergence to meet application requirements. Drag and drop the convergence tools or techniques to be used on your proposal from the left into the corresponding convergence phase on the right.

SPF throttling

event detection

LSA throttling

event propagation

LSP throttling

event processing

IS-IS hello interval

RIB updating

limit LSP flooding

prefix prioritization

- A. Mastered
B. Not Mastered

Answer: A

Explanation:

IS-IS hello interval

LSP throttling

SPF throttling

prefix prioritization

NEW QUESTION 261

.....

Thank You for Trying Our Product

* 100% Pass or Money Back

All our products come with a 90-day Money Back Guarantee.

* One year free update

You can enjoy free update one year. 24x7 online support.

* Trusted by Millions

We currently serve more than 30,000,000 customers.

* Shop Securely

All transactions are protected by VeriSign!

100% Pass Your 352-001 Exam with Our Prep Materials Via below:

<https://www.certleader.com/352-001-dumps.html>