

CompTIA

Exam Questions N10-009

CompTIA Network+ Exam



NEW QUESTION 1

- (Topic 3)

A PC and a network server have no network connectivity, and a help desk technician is attempting to resolve the issue. The technician plans to run a constant ping command from a Windows workstation while testing various possible reasons for the connectivity issue. Which of the following should the technician use?

- A. ping —w
- B. ping -i
- C. ping —s
- D. ping —t

Answer: D

Explanation:

ping -t is an option for the ping command in Windows that allows the user to send continuous ping requests to a target until stopped by pressing Ctrl-C. This can help the technician run a constant ping command while testing various possible reasons for the connectivity issue. ping -w is an option for the ping command in Windows that allows the user to specify a timeout value in milliseconds for each ping request. ping -i is an option for the ping command in Linux that allows the user to specify the time interval in seconds between each ping request. ping -s is an option for the ping command in Linux that allows the user to specify the size of the data payload in bytes for each ping request.

References: How to Use the Ping Command in Windows - Lifewire (<https://www.lifewire.com/ping-command-2618099>)

NEW QUESTION 2

- (Topic 3)

A network technician is troubleshooting a port channel issue. When logging in to one of the switches, the technician sees the following information displayed:

Native VLAN mismatch detected on interface g0/1

Which of the following layers of the OSI model is most likely to be where the issue resides?

- A. Layer 2
- B. Layer 3
- C. Layer 5
- D. Layer 6

Answer: A

Explanation:

Layer 2 of the OSI model is the data link layer, which is responsible for transferring data between adjacent nodes on a network. It uses protocols such as Ethernet, PPP, and HDLC to encapsulate data into frames and add MAC addresses for source and destination identification. It also uses protocols such as STP, LACP, and CDP to manage the physical links and prevent loops, aggregate bandwidth, and discover neighboring devices¹²

A native VLAN mismatch is a common Layer 2 issue that occurs when two switches are connected by a trunk port, but have different native VLANs configured on their interfaces. A native VLAN is the VLAN that is assigned to untagged frames on a trunk port. If the native VLANs do not match, the switches will drop the untagged frames and generate an error message. This can cause connectivity problems and security risks on the network³⁴⁵

To resolve a native VLAN mismatch, the network technician should ensure that both switches have the same native VLAN configured on their trunk ports, or use a different port mode such as access or general.

NEW QUESTION 3

- (Topic 3)

Which of the following protocols can be routed?

- A. FCoE
- B. Fibre Channel
- C. iSCSI
- D. NetBEUI

Answer: C

Explanation:

iSCSI (Internet Small Computer System Interface) is a protocol that allows SCSI commands to be transported over IP networks¹. iSCSI can be routed because it contains a network address and a device address, as required by a routable protocol². iSCSI can be used to access block-level storage devices over a network, such as SAN (Storage Area Network).

FCoE (Fibre Channel over Ethernet) is a protocol that allows Fibre Channel frames to be encapsulated and transported over Ethernet networks¹. FCoE cannot be routed because it does not contain a network address, only a device address. FCoE operates at the data link layer and requires special switches and adapters to support it. FCoE can also be used to access block-level storage devices over a network, such as SAN.

Fibre Channel is a protocol that provides high-speed and low-latency communication between servers and storage devices¹. Fibre Channel cannot be routed because it does not use IP networks, but rather its own dedicated network infrastructure. Fibre Channel operates at the physical layer and the data link layer and requires special cables, switches, and adapters to support it. Fibre Channel can also be used to access block-level storage devices over a network, such as SAN.

NetBEUI (NetBIOS Extended User Interface) is an old protocol that provides session-level communication between devices on a local network¹. NetBEUI cannot be routed because it does not contain a network address, only a device address. NetBEUI operates at the transport layer and relies on NetBIOS for name resolution. NetBEUI is obsolete and has been replaced by other protocols, such as TCP/IP.

NEW QUESTION 4

- (Topic 3)

A Chief Information Officer wants to monitor network breaching in a passive, controlled manner. Which of the following would be best to implement?

- A. Honeypot
- B. Perimeter network
- C. Intrusion prevention system
- D. Port security

Answer: A

Explanation:

A honeypot is a decoy system that is designed to attract and trap hackers who attempt to breach the network. A honeypot mimics a real system or network, but contains fake or non-sensitive data and applications. A honeypot can be used to monitor network breaching in a passive, controlled manner, as it allows the network administrator to observe the hacker's behavior, techniques, and tools without compromising the actual network or data. A honeypot can also help to divert the hacker's attention from the real targets and collect forensic evidence for further analysis or prosecution.

NEW QUESTION 5

- (Topic 3)

A network is experiencing extreme latency when accessing a particular website. Which of the following commands will BEST help identify the issue?

- A. ipconfig
- B. netstat
- C. tracert
- D. ping

Answer: C

NEW QUESTION 6

- (Topic 3)

A network administrator is given the network 80.87.78.0/26 for specific device assignments. Which of the following describes this network?

- A. 80.87.78.0 - 80.87.78.14
- B. 80.87.78.0 - 80.87.78.110
- C. 80.87.78.1 - 80.87.78.62
- D. 80.87.78.1 - 80.87.78.158

Answer: C

Explanation:

The network 80.87.78.0/26 is a Class A network with a subnet mask of /26, which means that it contains 26 bits of network information and 6 bits of host information.

The range of valid host addresses for this network is 80.87.78.1 to 80.87.78.62. Any addresses outside of this range are reserved for special purposes or are not used.

NEW QUESTION 7

- (Topic 3)

A network technician is investigating a trouble ticket for a user who does not have network connectivity. All patch cables between the wall jacks and computers in the building were upgraded over the weekend from Cat 5 to Cat 6. The newly installed cable is crimped with a TIA/EIA 568A on one end and a TIA/EIA 568B on the other end.

Which of the following should the technician do to MOST likely fix the issue?

- A. Ensure the switchport has PoE enabled.
- B. Crimp the cable as a straight-through cable.
- C. Ensure the switchport has STP enabled.
- D. Crimp the cable as a rollover cable.

Answer: B

Explanation:

A straight-through cable is a type of twisted pair cable that has the same wiring standard (TIA/EIA 568A or 568B) on both ends. This is the most common type of cable used for connecting devices of different types, such as a computer and a switch. A cable that has different wiring standards on each end (TIA/EIA 568A on one end and 568B on the other) is called a crossover cable, which is used for connecting devices of the same type, such as two computers or two switches. Therefore, the technician should crimp the cable as a straight-through cable to fix the issue.

NEW QUESTION 8

- (Topic 3)

A technician is monitoring a network interface and notices the device is dropping packets. The cable and interfaces, however, are in working order. Which of the following is MOST likely the cause?

- A. OID duplication
- B. MIB mismatch
- C. CPU usage
- D. Encapsulation errors

Answer: C

NEW QUESTION 9

- (Topic 3)

A technician removes an old PC from the network and replaces it with a new PC that is unable to connect to the LAN. Which of the following is MOST likely the cause of the issue?

- A. Port security
- B. Port tagging
- C. Port aggregation
- D. Port mirroring

Answer: A

Explanation:

It is most likely that the issue is caused by port security, as this is a feature that can prevent new devices from connecting to the LAN. Port tagging, port aggregation, and port mirroring are all features that are used to manage traffic on the network, but they are not related to the connectivity of new devices. If the technician has configured port security on the network and the new PC does not meet the security requirements, it will not be able to connect to the LAN.

NEW QUESTION 10

- (Topic 3)

A user calls the help desk to report being unable to reach a file server. The technician logs in to the user's computer and verifies that pings fail to respond back when trying to reach the file server. Which of the following would BEST help the technician verify whether the file server is reachable?

- A. netstat
- B. ipconfig
- C. nslookup
- D. traceroute

Answer: D

Explanation:

Traceroute is a network diagnostic tool that allows you to trace the path that network packets take from one device to another. By running traceroute to the file server, the technician can see the sequence of devices and networks that the packets pass through on their way to the file server. This can help the technician to determine if there is a problem with the network connection between the user's computer and the file server, or if the issue is with the file server itself.

NEW QUESTION 10

- (Topic 3)

A customer is adding fiber connectivity between adjacent buildings. A technician terminates the multimode cable to the fiber patch panel. After the technician connects the fiber patch cable, the indicator light does not come on. Which of the following should a technician try first to troubleshoot this issue?

- A. Reverse the fibers.
- B. Reterminate the fibers.
- C. Verify the fiber size.
- D. Examine the cable runs for visual faults.

Answer: A

Explanation:

One of the most common causes of fiber connectivity issues is the reversal of the fibers. This means that the transmit (TX) and receive (RX) ports on one end of the fiber link are not matched with the corresponding ports on the other end. For example, if the TX port on one device is connected to the TX port on another device, and the same for the RX ports, then the devices will not be able to communicate with each other. This can result in no indicator light, no link, or no data transmission¹².

To troubleshoot this issue, the technician should first try to reverse the fibers. This can be done by swapping the connectors at one end of the fiber patch cable, or by using a crossover adapter or cable that reverses the polarity of the fibers. The technician should then check if the indicator light comes on and if the devices can communicate properly¹². The other options are not the first steps to troubleshoot this issue. Reterminating the fibers is a time-consuming and costly process that should be done only if there is evidence of physical damage or poor quality of the termination. Verifying the fiber size is not relevant in this scenario, as multimode fiber is compatible with multimode fiber, and any mismatch in core diameter or bandwidth would result in high attenuation, not complete loss of signal. Examining the cable runs for visual faults is a useful technique, but it requires a special tool called a visual fault locator (VFL) that emits a visible red light through the fiber and shows any breaks or bends along the cable. However, a VFL cannot detect polarity issues or connector problems, so it is not sufficient to troubleshoot this issue

NEW QUESTION 11

- (Topic 3)

A network technician 13 troubleshooting a specific port on a switch. Which of the following commands should the technician use to see the port configuration?

- A. show route
- B. show Interface
- C. show arp
- D. show port

Answer: B

Explanation:

To see the configuration of a specific port on a switch, the network technician should use the "show interface" command. This command provides detailed information about the interface, including the current configuration, status, and statistics for the interface.

NEW QUESTION 16

- (Topic 3)

Which of the following is the best action to take before sending a network router to be recycled as electronic waste?

- A. Turn on port security.
- B. Shred the switch hard drive.
- C. Back up and erase the configuration.
- D. Remove the company asset ID tag.

Answer: C

Explanation:

Before disposing of a network router, it is important to back up and erase the configuration to prevent unauthorized access to sensitive data and network settings. A network router may contain information such as passwords, IP addresses, firewall rules, VPN settings, and other network parameters that could be exploited by hackers or malicious users. By backing up the configuration, you can preserve the network settings for future reference or reuse. By erasing the configuration, you can wipe out the data and restore the router to its factory default state.

NEW QUESTION 18

- (Topic 3)

Which of the following protocols is widely used in large-scale enterprise networks to support complex networks with multiple routers and balance traffic load on multiple links?

- A. OSPF
- B. RIPv2
- C. QoS
- D. STP

Answer: A

NEW QUESTION 19

- (Topic 3)

A Wi-Fi network was recently deployed in a new, multilevel building. Several issues are now being reported related to latency and drops in coverage. Which of the following is the FIRST step to troubleshoot the issues?

- A. Perform a site survey.
- B. Review the AP placement
- C. Monitor channel utilization.
- D. Test cable attenuation.

Answer: A

NEW QUESTION 21

- (Topic 3)

A large number of PCs are obtaining an APIPA IP address, and a number of new computers were added to the network. Which of the following is MOST likely causing the PCs to obtain an APIPA address?

- A. Rogue DHCP server
- B. Network collision
- C. Incorrect DNS settings
- D. DHCP scope exhaustion

Answer: D

Explanation:

DHCP scope exhaustion means that there are no more available IP addresses in the DHCP server's pool of addresses to assign to new devices on the network. When this happens, the devices will use APIPA (Automatic Private IP Addressing) to self-configure an IP address in the range of 169.254.0.1 to 169.254.255.254. These addresses are not routable and can only communicate with other devices on the same local network.

A rogue DHCP server (A) is an unauthorized DHCP server that can cause IP address conflicts or security issues by assigning IP addresses to devices on the network. A network collision (B) is a situation where two or more devices try to send data on the same network segment at the same time, causing interference and data loss. Incorrect DNS settings © can prevent devices from resolving domain names to IP addresses, but they do not affect the DHCP process.

NEW QUESTION 25

- (Topic 3)

Which of the following documents is MOST likely to be associated with identifying and documenting critical applications?

- A. Software development life-cycle policy
- B. User acceptance testing plan
- C. Change management policy
- D. Business continuity plan

Answer: D

Explanation:

A business continuity plan (BCP) is a document that outlines the procedures and strategies to ensure the continuity of critical business functions in the event of a disaster or disruption. A BCP is most likely to be associated with identifying and documenting critical applications that are essential for the organization's operations and recovery. A BCP also defines the roles and responsibilities of the staff, the backup and restore processes, the communication channels, and the testing and maintenance schedules.

References: Network+ Study Guide Objective 5.2: Explain disaster recovery and business continuity concepts.

NEW QUESTION 27

- (Topic 3)

A security engineer is trying to connect cameras to a 12-port PoE switch, but only eight cameras turn on. Which of the following should the engineer check first?

- A. Ethernet cable type
- B. Voltage
- C. Transceiver compatibility
- D. DHCP addressing

Answer: B

Explanation:

The most likely reason why only eight cameras turn on is that the PoE switch does not have enough power budget to supply all 12 cameras. The engineer should check the voltage and wattage ratings of the PoE switch and the cameras, and make sure they are compatible and sufficient. The Ethernet cable type, transceiver compatibility, and DHCP addressing are less likely to cause this problem, as they would affect the data transmission rather than the power delivery.

References:

- ? CompTIA Network+ N10-008 Certification Study Guide, page 181
- ? CompTIA Network+ N10-008 Cert Guide, Deluxe Edition, page 352
- ? PoE Troubleshooting: The Common PoE Errors and Solutions3

NEW QUESTION 29

- (Topic 3)

While troubleshooting a network, a VoIP systems engineer discovers a significant inconsistency in the amount of time required for data to reach its destination and return. Which of the following terms best describes this issue?

- A. Bandwidth
- B. Latency
- C. Jitter
- D. Throughput

Answer: C**Explanation:**

Jitter is the variation in the delay of data packets over a network. It is caused by factors such as network congestion, routing changes, packet loss, or improper queuing. Jitter affects the quality of VoIP calls because it can cause gaps, distortion, or out-of-order delivery of voice data. Jitter can be measured by the difference between the expected and actual arrival times of packets2. To reduce jitter, VoIP systems use buffers to store and reorder packets before playing them back. However, too much buffering can also increase latency, which is the total time it takes for data to travel from one point to another3.

References2 - VoIP Troubleshooting: 5 Fixes for Common Connection Issues - Nextiva3 - Troubleshooting VoIP — Is it You or the Network? - PingPlotter

NEW QUESTION 32

- (Topic 3)

Which of the following is most likely to be implemented to actively mitigate intrusions on a host device?

- A. HIDS
- B. MDS
- C. HIPS
- D. NIPS

Answer: A**Explanation:**

HIDS (host-based intrusion detection system) is a type of security software that monitors and analyzes the activity on a host device, such as a computer or a server. HIDS can detect and alert on intrusions, such as malware infections, unauthorized access, configuration changes, or policy violations. HIDS can also actively mitigate intrusions by blocking or quarantining malicious processes, files, or network connections1.

HIPS (host-based intrusion prevention system) is similar to HIDS, but it can also prevent intrusions from happening in the first place by enforcing security policies and rules on the host device2. MDS (multilayer switch) is a network device that combines the functions of a switch and a router, and it does not directly protect a host device from intrusions3. NIPS (network-based intrusion prevention system) is a network device that monitors and blocks malicious traffic on the network level, and it does not operate on the host device level4.

NEW QUESTION 33

- (Topic 3)

An engineer recently decided to upgrade the firmware on a router. During the upgrade, the help desk received calls about a network outage, and a critical ticket was opened. The network manager would like to create a policy to prevent this from happening in the future. Which of the following documents should the manager create?

- A. Change management
- B. incident response
- C. Standard operating procedure
- D. System life cycle

Answer: A**NEW QUESTION 37**

- (Topic 3)

Which of the following combinations of single cables and transceivers will allow a server to have 40GB of network throughput? (Select two).

- A. SFP+
- B. SFP
- C. QSFP+
- D. Multimode
- E. Cat 6a
- F. Cat5e

Answer: CD**Explanation:**

QSFP+ is a type of transceiver that supports 40 gigabit Ethernet (40GbE) over four lanes of 10 gigabit Ethernet (10GbE) each. QSFP+ stands for quad small form-factor pluggable plus, and it is a compact and hot-swappable module that plugs into a QSFP+ port on a network device. QSFP+ transceivers can support various types of cables and connectors, such as direct attach copper (DAC), active optical cable (AOC), or fiber optic cable. Multimode is a type of fiber optic cable that supports multiple modes of light propagation within the core. Multimode fiber optic cable can carry higher bandwidth and data rates than single-mode fiber optic cable, but over shorter distances. Multimode fiber optic cable is commonly used for short-reach applications, such as within a data center or a campus network. Multimode fiber optic cable can be paired with QSFP+ transceivers to achieve 40GbE connectivity.

The other options are not correct because they do not support 40GbE. They are:

? SFP+. SFP+ is a type of transceiver that supports 10 gigabit Ethernet (10GbE) over a single lane. SFP+ stands for small form-factor pluggable plus, and it is a

compact and hot-swappable module that plugs into an SFP+ port on a network device. SFP+ transceivers can support various types of cables and connectors, such as direct attach copper (DAC), active optical cable (AOC), or fiber optic cable. However, SFP+ transceivers cannot support 40GbE by themselves, unless they are used in a breakout configuration with a QSFP+ transceiver.

? SFP. SFP is a type of transceiver that supports 1 gigabit Ethernet (1GbE) over a single lane. SFP stands for small form-factor pluggable, and it is a compact and hot-swappable module that plugs into an SFP port on a network device. SFP transceivers can support various types of cables and connectors, such as twisted-pair copper, coaxial cable, or fiber optic cable. However, SFP transceivers cannot support 40GbE by themselves, unless they are used in a breakout configuration with a QSFP+ transceiver.

? Cat 6a. Cat 6a is a type of twisted-pair copper cable that supports 10 gigabit Ethernet (10GbE) over distances up to 100 meters. Cat 6a stands for category 6 augmented, and it is an enhanced version of Cat 6 cable that offers better performance and reduced crosstalk. Cat 6a cable can be paired with 10Gbase-T transceivers to achieve 10GbE connectivity. However, Cat 6a cable cannot support 40GbE by itself, unless it is used in a breakout configuration with a QSFP+ transceiver.

? Cat 5e. Cat 5e is a type of twisted-pair copper cable that supports 1 gigabit Ethernet (1GbE) over distances up to 100 meters. Cat 5e stands for category 5 enhanced, and it is an improved version of Cat 5 cable that offers better performance and reduced crosstalk. Cat 5e cable can be paired with 1000base-T transceivers to achieve 1GbE connectivity. However, Cat 5e cable cannot support 40GbE by itself, unless it is used in a breakout configuration with a QSFP+ transceiver.

References1: QSFP+ - an overview | ScienceDirect Topics2: Multimode Fiber - an overview | ScienceDirect Topics3: Network+ (Plus) Certification | CompTIA IT Certifications4: SFP+ - an overview | ScienceDirect Topics5: SFP - an overview | ScienceDirect Topics6: Cat 6a - an overview | ScienceDirect Topics7: [Cat 5e - an overview | ScienceDirect Topics]

NEW QUESTION 38

- (Topic 3)

Users in a branch can access an In-house database server, but it is taking too long to fetch records. The analyst does not know whether the issue is being caused by network latency. Which of the following will the analyst MOST likely use to retrieve the metrics that are needed to resolve this issue?

- A. SNMP
- B. Link state
- C. Syslog
- D. QoS
- E. Traffic shaping

Answer: A

NEW QUESTION 39

- (Topic 3)

Which of the following DNS records maps an alias to a true name?

- A. AAAA
- B. NS
- C. TXT
- D. CNAME

Answer: D

Explanation:

A CNAME (Canonical Name) record is a type of DNS (Domain Name System) record that maps an alias name to a canonical or true domain name. For example, a CNAME record can map blog.example.com to example.com, which means that blog.example.com is an alias of example.com. A CNAME record is useful when you want to point multiple subdomains to the same IP address, or when you want to change the IP address of a domain without affecting the subdomains¹.

NEW QUESTION 44

- (Topic 3)

Which of the following fiber connector types is the most likely to be used on a network interface card?

- A. LC
- B. SC
- C. ST
- D. MPO

Answer: A

Explanation:

LC (local connector) is the most likely fiber connector type to be used on a network interface card, because it is a small form factor connector that can fit more interfaces on a single card. LC connectors use square connectors that have a locking mechanism on the top, similar to an RJ45 copper connector. LC connectors are also compatible with SFP (small form-factor pluggable) modules that are often used to link a gigabit Ethernet port with a fiber network¹².

References:

? Optical Fiber Connectors – CompTIA Network+ N10-007 – 2.11

? CompTIA Network+ Certification Exam Objectives²

NEW QUESTION 49

- (Topic 3)

Which of the following BEST describes a north-south traffic flow?

- A. A public internet user accessing a published web server
- B. A database server communicating with another clustered database server
- C. A Layer 3 switch advertising routes to a router
- D. A management application connecting to managed devices

Answer: A

Explanation:

A north-south traffic flow is a term used to describe the communication between a user or device outside the network and a server or service inside the network. For example, a public internet user accessing a published web server is a north-south traffic flow. This type of traffic flow typically crosses the network perimeter and requires security measures such as firewalls and VPNs. References: CompTIA Network+ N10-008 Certification Study Guide, page 16; The Official CompTIA Network+ Student Guide (Exam N10-008), page 1- 9.

North-south traffic flow refers to the flow of traffic between the internal network of an organization and the external world. This type of traffic typically flows from the internet to the organization's internal network, and back again.

Examples of north-south traffic flow include:

- ? A public internet user accessing a published web server
- ? A remote employee connecting to a VPN
- ? An email client sending email to an external server
- ? A customer connecting to an e-commerce website

References:

- ? CompTIA Network+ N10-008 Exam Objectives, Version 5.0, August 2022, page 12
- ? CompTIA Network+ Certification Study Guide, Seventh Edition, Todd Lammle, Sybex, 2022, page 17

NEW QUESTION 50

- (Topic 3)

A customer connects a firewall to an ISP router that translates traffic destined for the internet. The customer can connect to the internet but not to the remote site. Which of the following will verify the status of NAT?

- A. tcpdump
- B. nmap
- C. ipconfig
- D. tracer

Answer: A

Explanation:

tcpdump is a command-line tool that can capture and analyze network traffic on a given interface. tcpdump can verify the status of NAT by showing the source and destination IP addresses of the packets before and after they pass through the ISP router that translates traffic destined for the internet. tcpdump can also show the NAT protocol and port numbers used by the router. nmap, ipconfig, and tracer are not suitable tools for verifying the status of NAT, as they do not show the IP address translation process.

References

- ? 1: Network Address Translation – N10-008 CompTIA Network+ : 1.4
- ? 2: CompTIA Network+ N10-008 Certification Study Guide, page 95-96
- ? 3: CompTIA Network+ N10-008 Exam Subnetting Quiz, question 16
- ? 4: CompTIA Network+ N10-008 Certification Practice Test, question 7

NEW QUESTION 53

- (Topic 3)

A network technician wants to find the shortest path from one node to every other node in the network. Which of the following algorithms will provide the FASTEST convergence time?

- A. A static algorithm
- B. A link-state algorithm
- C. A distance-vector algorithm
- D. A path-vector algorithm

Answer: B

Explanation:

A link-state algorithm is a routing algorithm that uses information about the state of each link in the network to calculate the shortest path from one node to every other node. A link-state algorithm requires each router to maintain a complete map of the network topology and exchange link-state advertisements with its neighbors periodically or when a change occurs. A link-state algorithm uses a mathematical formula called Dijkstra's algorithm to find the shortest path based on the link costs. A link-state algorithm provides the fastest convergence time because it can quickly detect and adapt to network changes. References: [CompTIA Network+ Certification Exam Objectives], [Link-state routing protocol - Wikipedia]

NEW QUESTION 57

- (Topic 3)

Network traffic is being compromised by DNS poisoning every time a company's router is connected to the internet. The network team detects a non-authorized DNS server being assigned to the network clients and remediates the incident by setting a trusted DNS server, but the issue occurs again after internet exposure. Which of the following best practices should be implemented on the router?

- A. Change the device's default password.
- B. Disable router advertisement guard.
- C. Activate control plane policing.
- D. Disable unneeded network services.

Answer: A

NEW QUESTION 61

- (Topic 3)

A network administrator is adding a new switch to the network. Which of the following network hardening techniques would be BEST to use once the switch is in production?

- A. Disable unneeded ports
- B. Disable SSH service
- C. Disable MAC filtering
- D. Disable port security

Answer: A

NEW QUESTION 62

- (Topic 3)

A network technician wants to deploy a new wireless access point to reduce user latency. Currently, the organization has the following deployed: Which of the following channels should the new device broadcast on?

- A. Channel 3
- B. Channel 9
- C. Channel 10
- D. Channel 11

Answer: D

Explanation:

The best channel for a new wireless access point is one that does not overlap with the existing channels used by other devices. Overlapping channels can cause interference and degrade the performance of the wireless network. According to the web search results, the 2.4 GHz band has 11 channels in the U.S., but only channels 1, 6, and 11 are non-overlapping. Since the existing devices are using channels 1 and 6, the new device should use channel 11 to avoid adjacent-channel interference¹²

References¹: Why Channels 1, 6 and 11? | MetaGeek ²: How to Choose the Best Wi-Fi Channels for Your Network - Lifewire

NEW QUESTION 63

- (Topic 3)

A company has multiple offices around the world. The computer rooms in some office locations are too warm. Dedicated sensors are in each room, but the process of checking each sensor takes a long time. Which of the following options can the company put in place to automate temperature readings with internal resources?

- A. Implement NetFlow.
- B. Hire a programmer to write a script to perform the checks
- C. Utilize ping to measure the response.
- D. Use SNMP with an existing collector server

Answer: D

Explanation:

SNMP (Simple Network Management Protocol) is a protocol that allows network devices to communicate with a management server. By using SNMP, the company can set up an SNMP agent on each sensor, which will report its temperature readings to an existing collector server. This will enable the company to monitor the temperatures of all their sensors in real-time without the need for manual checks. Additionally, SNMP's scalability means that even if the company adds more rooms or sensors, the existing system can be easily expanded to accommodate them.

NEW QUESTION 67

- (Topic 3)

A customer is hosting an internal database server. None of the users are able to connect to the server, even though it appears to be working properly. Which of the following is the best way to verify traffic to and from the server?

- A. Protocol analyzer
- B. nmap
- C. ipconfig
- D. Speed test

Answer: A

Explanation:

A protocol analyzer is the best way to verify traffic to and from the server. A protocol analyzer, also known as a packet sniffer or network analyzer, is a tool that captures and analyzes the network packets that are sent and received by a device. A protocol analyzer can show the source and destination IP addresses, ports, protocols, and payload of each packet, as well as any errors or anomalies in the network communication. A protocol analyzer can help troubleshoot network connectivity issues by identifying the root cause of the problem, such as misconfigured firewall rules, incorrect routing, or faulty network devices¹².

To use a protocol analyzer to verify traffic to and from the server, the customer can follow these steps:

? Install a protocol analyzer tool on a device that is connected to the same network

as the server, such as Wireshark³ or Microsoft Network Monitor⁴.

? Select the network interface that is used to communicate with the server, and start capturing the network traffic.

? Filter the captured traffic by using the IP address or hostname of the server, or by using a specific port or protocol that is used by the database service.

? Analyze the filtered traffic and look for any signs of successful or failed connection attempts, such as TCP SYN, ACK, or RST packets, or ICMP messages.

? If there are no connection attempts to or from the server, then there may be a problem with the network configuration or device settings that prevent the traffic from reaching the server.

? If there are connection attempts but they are rejected or dropped by the server, then there may be a problem with the server configuration or service settings that prevent the traffic from being accepted by the server.

The other options are not the best ways to verify traffic to and from the server. nmap is a tool that can scan a network and discover hosts and services, but it cannot capture and analyze the network packets in detail. ipconfig is a command that can display and configure the IP settings of a device, but it cannot monitor or test the network communication with another device. Speed test is a tool that can measure the bandwidth and latency of a network connection, but it cannot diagnose or troubleshoot specific network problems.

NEW QUESTION 70

- (Topic 3)

The Chief Executive Officer of a company wants to ensure business operations are not disrupted in the event of a disaster. The solution must have fully redundant equipment, real-time synchronization, and zero data loss. Which Of the following should be prepared?

- A. Cloud site
- B. Warm site
- C. Hot site

D. Cold site

Answer: C

Explanation:

A hot site is a backup site that is fully equipped and ready to take over the operations of the primary site in the event of a disaster. A hot site has real-time synchronization with the primary site and can provide zero data loss. A hot site is the most expensive and reliable option for disaster recovery.

References: Network+ Study Guide Objective 5.3: Explain common scanning, monitoring and patching processes and summarize their expected outputs.

NEW QUESTION 72

- (Topic 3)

In which of the following components do routing protocols belong in a software-defined network?

- A. Infrastructure layer
- B. Control layer
- C. Application layer
- D. Management plane

Answer: B

Explanation:

A software-defined network (SDN) is a network architecture that decouples the control plane from the data plane and centralizes the network intelligence in a software controller. The control plane is the part of the network that makes decisions about how to route traffic, while the data plane is the part of the network that forwards traffic based on the control plane's instructions. The control layer is the layer in an SDN that contains the controller and the routing protocols that communicate with the network devices. The control layer is responsible for managing and configuring the network devices and providing them with the necessary information to forward traffic. References: <https://www.comptia.org/training/books/network-n10-008-study-guide> (page 378)

NEW QUESTION 74

- (Topic 3)

A VOIP phone is plugged in to a port but cannot receive calls. Which Of the following needs to be done on the port to address the issue?

- A. Trunk all VLANs on the port.
- B. Configure the native VLAN.
- C. Tag the traffic to voice VLAN.
- D. Disable VLANs.

Answer: C

Explanation:

To enable a VOIP phone to receive calls on a port, the traffic needs to be tagged to the voice VLAN that is configured on the switch. This allows the phone to communicate with the voice network and the PBX server. Tagging the traffic also separates the voice traffic from the data traffic that may be coming from a computer connected to the phone. The port should be configured to tag the traffic for the voice VLAN and untag the traffic for the data VLAN1. Trunking all VLANs on the port is unnecessary and may cause security issues. Configuring the native VLAN is not relevant for this issue. Disabling VLANs would prevent the phone from working at all.

References:

Optical Fiber Connectors – CompTIA Network+ N10-007 – 2.13

? VoIP and computer on separate VLANs through one cable1

NEW QUESTION 75

- (Topic 3)

A network technician needs to ensure the company's external mail server can pass reverse lookup checks. Which of the following records would the technician MOST likely configure? (Choose Correct option and give explanation directly from CompTIA Network+ Study guide or documents)

- A. PTR
- B. AAAA
- C. SPF
- D. CNAME

Answer: A

Explanation:

A PTR (Pointer) record is used to map an IP address to a domain name, which is necessary for reverse lookup checks. Reverse lookup checks are performed by external mail servers to verify the identity of the sender of the email. By configuring a PTR record, the network technician can ensure that the company's external mail server can pass these checks. According to the CompTIA Network+ Study Guide, "A PTR record is used to map an IP address to a domain name, and it is often used for email authentication."

NEW QUESTION 80

- (Topic 3)

A network administrator is preparing new switches that will be deployed to support a network extension project. The lead network engineer has already provided documentation to ensure the switches are set up properly Which of the following did the engineer most likely provide?

- A. Physical network diagram
- B. Site survey reports
- C. Baseline configurations
- D. Logical network diagram

Answer: C

Explanation:

Baseline configurations are the standard settings and parameters that are applied to network devices, such as switches, routers, firewalls, etc., to ensure consistent performance, security, and functionality across the network. Baseline configurations can include aspects such as IP addresses, VLANs, passwords, protocols, access lists, firmware versions, etc. Baseline configurations are usually documented and updated regularly to reflect any changes or modifications made to the network devices.

The lead network engineer most likely provided baseline configurations to the network administrator to ensure that the new switches are set up properly and in accordance with the network design and policies. Baseline configurations can help to simplify the deployment process, reduce errors and inconsistencies, and facilitate troubleshooting and maintenance.

The other options are not correct because they are not the most likely documentation that the lead network engineer provided to the network administrator. They are:

? Physical network diagram. A physical network diagram is a graphical representation of the physical layout and connections of the network devices and components, such as cables, ports, switches, routers, servers, etc. A physical network diagram can help to visualize the network topology, identify the locations and distances of the devices, and plan for cabling and power requirements. However, a physical network diagram does not provide the specific settings and parameters that need to be configured on the network devices, such as the switches.

? Site survey reports. A site survey report is a document that summarizes the findings and recommendations of a site survey, which is a process of assessing the suitability and readiness of a location for installing and operating network devices and components. A site survey report can include aspects such as environmental conditions, power and cooling availability, security and safety measures, interference and noise sources, signal coverage and quality, etc. A site survey report can help to identify and resolve any potential issues or challenges that may affect the network performance and reliability. However, a site survey report does not provide the specific settings and parameters that need to be configured on the network devices, such as the switches.

? Logical network diagram. A logical network diagram is a graphical representation of the logical structure and functionality of the network devices and components, such as subnets, IP addresses, VLANs, protocols, routing, firewall rules, etc. A logical network diagram can help to understand the network design, architecture, and policies, as well as the data flow and communication paths between the devices. However, a logical network diagram does not provide the specific settings and parameters that need to be configured on the network devices, such as the switches.

References1: Network+ (Plus) Certification | CompTIA IT Certifications2: What is a Baseline Configuration? - Definition from Techopedia3: What is a Physical Network Diagram? - Definition from Techopedia4: What is a Site Survey? - Definition from Techopedia5: [What is a Logical Network Diagram? - Definition from Techopedia]

NEW QUESTION 82

- (Topic 3)

A malicious user is using special software to perform an on-path attack. Which of the following best practices should be configured to mitigate this threat?

- A. Dynamic ARP inspection
- B. Role-based access
- C. Control plane policing
- D. MAC filtering

Answer: A

NEW QUESTION 84

- (Topic 3)

Which of the following architectures is used for FTP?

- A. Client-server
- B. Service-oriented
- C. Connection-oriented
- D. Data-centric

Answer: A

Explanation:

FTP (File Transfer Protocol) is a client-server based protocol, meaning that the two computers involved communicate with each other in a request-response pattern. The client sends a request to the server and the server responds with the requested data. This type of architecture is known as client-server, and it is used for many different types of applications, including FTP. Other architectures, such as service-oriented, connection-oriented, and data-centric, are not used for FTP.

NEW QUESTION 88

- (Topic 3)

A network administrator is working to configure a new device to provide Layer 2 connectivity to various endpoints including several WAPs. Which of the following devices will the administrator MOST likely configure?

- A. WLAN controller
- B. Cable modem
- C. Load balancer
- D. Switch
- E. Hub

Answer: D

Explanation:

A switch is a device that provides Layer 2 connectivity to various endpoints by forwarding frames based on MAC addresses. A switch can also connect to several WAPs (wireless access points) to provide wireless connectivity to wireless devices.

NEW QUESTION 90

- (Topic 3)

A network administrator is concerned about a rainbow table being used to help access network resources. Which of the following must be addressed to reduce the likelihood of a rainbow table being effective?

- A. Password policy
- B. Remote access policy
- C. Acceptable use policy
- D. Data loss prevention policy

Answer: A

Explanation:

A password policy must be addressed to reduce the likelihood of a rainbow table being effective. A rainbow table is a precomputed table of hashed passwords and their corresponding plaintext values. A rainbow table can be used to crack hashed passwords by performing a reverse lookup of the hash value in the table. A password policy is a set of rules and guidelines that define how passwords should be created, used, and managed in an organization. A password policy can help prevent rainbow table attacks by enforcing strong password requirements, such as length, complexity, expiration, and history. A strong password is one that is hard to guess or crack by using common methods such as brute force or dictionary attacks. References: [CompTIA Network+ Certification Exam Objectives], What Is Rainbow Table Attack? | Kaspersky, Password Policy Best Practices | Thycotic

NEW QUESTION 95

- (Topic 3)

A technician is working on a ticket for a user in the human resources department who received a new PC that does not connect to the internet. All users in human resources can access the internet. The technician can ping the PC from the human resources router but not from the IT network. Which of the following is the most likely cause of the issue?

- A. Duplicate IP address
- B. Misconfigured RIP
- C. Improper VLAN assignment
- D. Incorrect default gateway

Answer: D

Explanation:

An incorrect default gateway can cause a PC to not connect to the internet, because the default gateway is the device that routes traffic from the local network to other networks. If the PC has a wrong default gateway configured, it may not be able to reach the internet router or the IT network router. The technician can ping the PC from the human resources router because they are on the same local network, but not from the IT network router because they are on different networks. A duplicate IP address can cause a PC to not communicate with other devices on the same network, because the IP address is the unique identifier of a device on a network. If two devices have the same IP address, they may cause IP conflicts and packet loss. However, a duplicate IP address would not prevent the technician from pinging the PC from the human resources router, because they are on the same network. A misconfigured RIP can cause a router to not learn or advertise routes to other networks, because RIP is a routing protocol that dynamically exchanges routing information between routers. If a router has a wrong RIP configuration, it may not be able to reach or share routes with other routers. However, a misconfigured RIP would not affect the PC's connectivity to the internet, because the PC does not use RIP. An improper VLAN assignment can cause a PC to not communicate with other devices on the same or different networks, because a VLAN is a logical segmentation of a network that isolates traffic based on criteria such as function, security, or performance. If a PC is assigned to a wrong VLAN, it may not be able to access the resources or services that it needs. However, an improper VLAN assignment would not prevent the technician from pinging the PC from the human resources router, because they are on the same physical network.

References

What is a Default Gateway?

What's an IP Conflict and How Do You Resolve It? What is RIP (Routing Information Protocol)?

What is a VLAN? How to Set Up a VLAN Network

CompTIA Network+ Certification All-in-One Exam Guide, Eighth Edition (Exam N10-008)

NEW QUESTION 96

- (Topic 3)

A technician completed troubleshooting and was able to fix an issue. Which of the following is the BEST method the technician can use to pass along the exact steps other technicians should follow in case the issue arises again?

- A. Use change management to build a database
- B. Send an email stating that the issue is resolved.
- C. Document the lessons learned
- D. Close the ticket and inform the users.

Answer: C

Explanation:

Documenting the lessons learned is the best method for passing along the exact steps other technicians should follow in case the issue arises again. Lessons learned are the knowledge and experience gained from completing a project or solving a problem. Documenting the lessons learned helps to capture the best practices, challenges, solutions, and recommendations for future reference and improvement. Documenting the lessons learned can also help to update the knowledge base, standard operating procedures, or policies related to the issue. References: [CompTIA Network+ Certification Exam Objectives], Lessons Learned: Definition & Examples for Project Managers

NEW QUESTION 99

- (Topic 3)

A customer needs to distribute Ethernet to multiple computers in an office. The customer would like to use non-proprietary standards. Which of the following blocks does the technician need to install?

- A. 110
- B. 66
- C. Bix
- D. Krone

Answer: A

Explanation:

A 110 block is a type of punch-down block that is used to distribute Ethernet to multiple computers in an office. A punch-down block is a device that connects one group of wires to another group of wires by using a special tool that pushes the wires into slots on the block. A 110 block is a non-proprietary standard that supports up to Category 6 cabling and can be used for voice or data applications. References: <https://www.comptia.org/training/books/network-n10-008-study-guide> (page 64)

NEW QUESTION 102

- (Topic 3)

A network resource was accessed by an outsider as a result of a successful phishing campaign. Which of the following strategies should be employed to mitigate the effects of phishing?

- A. Multifactor authentication
- B. Single sign-on
- C. RADIUS
- D. VPN

Answer: A

Explanation:

Multifactor authentication is a security measure that requires users to provide multiple pieces of evidence before they can access a network resource. This could include requiring users to enter a username, password, and a code sent to the user's mobile phone before they are allowed access. This ensures that the user is who they say they are, reducing the risk of malicious actors gaining access to network resources as a result of a successful phishing campaign.

NEW QUESTION 105

- (Topic 3)

A network engineer needs to change an entire subnet of SLAAC-configured workstation addresses. Which of the following methods would be the best for the engineer to use?

- A. Change the address prefix in ARP in order for the workstations to retrieve their new addresses.
- B. Change the address prefix in a router in order for the router to advertise the new prefix with an ND.
- C. Change the address prefix scope in a DHCP server in order for the workstations to retrieve their new addresses.
- D. Change the workstations' address prefix manually because an automated method does not exist.

Answer: B

Explanation:

SLAAC (Stateless Address Autoconfiguration) is a mechanism that enables each host on the network to auto-configure a unique IPv6 address without any device keeping track of which address is assigned to which node¹². SLAAC uses link-local addresses and the interface's MAC address or a random number to generate the host portion of the IPv6 address². SLAAC also relies on Router Solicitation (RS) and Router Advertisement (RA) messages to obtain the network prefix and other information from a router¹². Therefore, to change an entire subnet of SLAAC-configured workstation addresses, the network engineer needs to change the address prefix in a router and let the router advertise the new prefix with an ND (Neighbor Discovery) message. This way, the workstations will receive the new prefix and update their IPv6 addresses accordingly³.

References¹ - IPv6 Stateless Address Auto-configuration (SLAAC) | NetworkAcademy.io² - IPv6 SLAAC – Stateless Address Autoconfiguration - Study-CCNA3 - Mastering IPv6

SLAAC Concepts and Configuration - Cisco Press

NEW QUESTION 109

- (Topic 3)

Which of the following should a network administrator configure when adding OT devices to an organization's architecture?

- A. Honeynet
- B. Data-at-rest encryption
- C. Time-based authentication
- D. Network segmentation

Answer: D

Explanation:

Network segmentation is the process of dividing a network into smaller subnets or segments, each with its own security policies and access controls. This can help isolate OT devices from IT devices, guest networks, and other potential threats, as well as improve network performance and efficiency. Network segmentation is a recommended security practice for OT environments, as it can limit the attack surface, contain the damage of a breach, and comply with regulatory standards.

<https://sectrio.com/complete-guide-to-ot-network-segmentation/>

NEW QUESTION 110

- (Topic 3)

Which of the following should be used to manage outside cables that need to be routed to various multimode uplinks?

- A. Fiber distribution panel
- B. 110 punchdown block
- C. PDU
- D. TIA/EIA-568A patch bay
- E. Cat 6 patch panel

Answer: A

Explanation:

A fiber distribution panel is a device that provides a central location for connecting and managing fiber optic cables and optical modules. It can support various types and speeds of fiber optic links, including multimode uplinks. Therefore, a fiber distribution panel should be used to manage outside cables that need to be routed to various multimode uplinks.

NEW QUESTION 113

- (Topic 3)

A network technician is attempting to increase throughput by configuring link port aggregation between a Gigabit Ethernet distribution switch and a Fast Ethernet access switch. Which of the following is the BEST choice concerning speed and duplex for all interfaces that are participating in the link aggregation?

- A. Half duplex and 1GB speed
- B. Full duplex and 1GB speed
- C. Half duplex and 100MB speed
- D. Full duplex and 100MB speed

Answer: B

Explanation:

The best choice for configuring link port aggregation between a Gigabit Ethernet distribution switch and a Fast Ethernet access switch is to use full duplex and 1GB speed for all interfaces that are participating in the link aggregation. This will allow for maximum throughput, as the full duplex connection will enable simultaneous sending and receiving of data, and the 1GB speed will ensure that the data is transferred quickly. According to the CompTIA Network+ Study Guide, "Full-duplex Ethernet allows the network adapter to transmit and receive data simultaneously, which can result in double the bandwidth of half-duplex Ethernet." Additionally, the official text states, "Ethernet and Fast Ethernet use different speeds for data transmission, with Ethernet being 1,000 megabits (1 gigabit) per second and Fast Ethernet being 100 megabits per second."

NEW QUESTION 118

- (Topic 3)

Which of the following options represents the participating computers in a network?

- A. Nodes
- B. CPUs
- C. Servers
- D. Clients

Answer: A

NEW QUESTION 122

- (Topic 3)

A user took a laptop on a trip and made changes to the network parameters while at the airport. The user can access all internet websites but not corporate intranet websites. Which of the following is the most likely cause of the issue?

- A. Duplicate IP address
- B. Duplicate SSID
- C. Incorrect DNS
- D. Incorrect subnet mask

Answer: C

Explanation:

DNS (Domain Name System) is a service that translates domain names into IP addresses. Corporate intranet websites are usually hosted on private IP addresses that are not accessible from the public internet. Therefore, the user's laptop needs to use the correct DNS server that can resolve the intranet domain names to the private IP addresses. If the user changed the network parameters at the airport and did not revert them back, the laptop might be using a public DNS server that does not have the records for the intranet websites. This would cause the user to access all internet websites but not corporate intranet websites.

References:

? An Overview of DNS - N10-008 CompTIA Network+ : 1.61

? DNS Configuration – CompTIA A+ 220-11012

? CompTIA Network+ Certification Exam Objectives, page 53

NEW QUESTION 125

- (Topic 3)

The lack of a formal process to grant network permissions to different profiles of employees and contractors is leading to an increasing number of security incidents. Non-uniform and overly permissive network accesses are being granted. Which of the following would be the MOST appropriate method to improve the security of the environment?

- A. Change the default permissions to implicit deny
- B. Configure uniform ACLs to employees and NAC for contractors.
- C. Deploy an RDP server to centralize the access to the network
- D. Implement role-based access control

Answer: D

Explanation:

The most appropriate method to improve the security of the environment would be to implement role-based access control (RBAC). With RBAC, users are granted access to the network based on their role within the organization. This allows for more granular access control, as different roles may require different levels of access. Additionally, this ensures that users only have access to the resources they need and no more. This helps to reduce the risk of unauthorized access or misuse of the network. References and further information can be found in the CompTIA Network+ Study Manual, Chapter 8, Access Control.

RBAC is a method of restricting network access based on the roles of individual users within the organization. With RBAC, users are granted access only to the resources they need to perform their specific job functions. This approach reduces the risk of unauthorized access, provides greater visibility into user activity, and simplifies network management. Changing the default permissions to implicit deny may improve security, but it could also cause issues for legitimate users who require access to specific resources. Configuring uniform ACLs and NAC for contractors is a step in the right direction, but it may not be enough to address the overall lack of a formal process for granting network permissions. Deploying an RDP server to centralize access to the network is not a viable solution, as it would not address the root cause of the security incidents.

Therefore, the most appropriate option is to implement role-based access control. Reference: CompTIA Network+ Study Guide, Fourth Edition, Chapter 7, section 7.4.

NEW QUESTION 128

- (Topic 3)

A network administrator wants to test the throughput of a new metro Ethernet circuit to verify that its performance matches the requirements specified in the SLA. Which of the following would BEST help measure the throughput?

- A. iPerf
- B. Ping
- C. NetFlow
- D. Netstat

Answer: A

NEW QUESTION 133

- (Topic 3)

An employee working in a warehouse facility is experiencing interruptions in mobile applications while walking around the facility. According to a recent site survey, the WLAN comprises autonomous APs that are directly connected to the internet, providing adequate signal coverage. Which of the following is the BEST solution to improve network stability?

- A. Implement client roaming using an extended service deployment employing a wireless controller.
- B. Remove omnidirectional antennas and adopt a directional bridge.
- C. Ensure all APs of the warehouse support MIMO and Wi-Fi 4.
- D. Verify that the level of EIRP power settings is set to the maximum permitted by regulations.

Answer: A

Explanation:

Client roaming refers to the ability of a wireless device to seamlessly connect to a different access point (AP) as the user moves around the facility. This can help to improve network stability and reduce interruptions in mobile applications. An extended service deployment is a type of wireless network configuration that uses multiple APs to cover a large area, such as a warehouse facility. By using a wireless controller to manage the APs, the network can be better optimized for client roaming, which can improve network stability.

"Roaming With multiple WAPs in an ESS, clients will connect to whichever WAP has the strongest signal. As clients move through the space covered by the broadcast area, they will change WAP connections seamlessly, a process called roaming."

NEW QUESTION 137

- (Topic 3)

Which of the following commands can be used to display the IP address, subnet address, gateway address, and DNS address on a Windows computer?

- A. netstat -a
- B. ifconfig
- C. ip addr
- D. ipconfig /all

Answer: D

Explanation:

The ipconfig command is a utility that allows you to view and modify the network configuration of a Windows computer. By running the command "ipconfig /all", you can view detailed information about the network configuration of your computer, including the IP address, subnet mask, default gateway, and DNS server addresses.

Option A (netstat -a) is a command that displays active network connections and their status, but it does not display IP address or other network configuration information. Option B (ifconfig) is a command used on Linux and Unix systems to view and modify network configuration, but it is not available on Windows. Option C (ip addr) is a command used on Linux and Unix systems to view and modify network configuration, but it is not available on Windows.

NEW QUESTION 138

- (Topic 3)

Which of the following types of data center architectures will MOST likely be used in a large SDN and can be extended beyond the data center?

- A. iSCSI
- B. FCoE
- C. Three-tiered network
- D. Spine and leaf
- E. Top-of-rack switching

Answer: D

Explanation:

The type of data center architecture that will most likely be used in a large SDN and can be extended beyond the data center is spine and leaf. Spine and leaf is a network topology that consists of two layers of switches: spine switches and leaf switches. Spine switches are interconnected to each other and form the core of the network, while leaf switches are connected to each spine switch and form the access layer of the network. Spine and leaf topology provides high scalability, performance, and flexibility for data center networks, especially for SDN (Software Defined Networking) environments that require dynamic traffic flows and virtualization. References: CompTIA Network+ N10-008 Certification Study Guide, page 16; The Official CompTIA Network+ Student Guide (Exam N10-008), page 1-9.

NEW QUESTION 143

- (Topic 3)

To comply with an industry regulation, all communication destined to a secure server should be logged and archived on a storage device. Which of the following can be configured to fulfill this requirement?

- A. QoS traffic classification
- B. Port mirroring
- C. Flow control
- D. Link Aggregation Control Protocol

Answer: B

NEW QUESTION 147

- (Topic 3)

A network technician needs to select an AP that will support at least 1.3Gbps and 5GHz only. Which of the following wireless standards must the AP support to meet the requirements?

- A. B
- B. AC
- C. AX
- D. N
- E. G

Answer: B

Explanation:

Wireless AC is a wireless standard that supports up to 1.3Gbps data rate and operates in the 5GHz frequency band only. Wireless AC is also backward compatible with wireless A and N devices that use the 5GHz band. Wireless AC is suitable for high-performance applications such as HD video streaming and online gaming. References: Network+ Study Guide Objective 2.2: Explain the purposes and properties of routing and switching. Subobjective: Wireless standards and their characteristics.

NEW QUESTION 149

- (Topic 3)

A security team would like to use a system in an isolated network to record the actions of potential attackers. Which of the following solutions is the security team implementing?

- A. Perimeter network
- B. Honeypot
- C. Zero trust infrastructure
- D. Network segmentation

Answer: B

Explanation:

The solution that the security team is implementing to record the actions of potential attackers in an isolated network is a honeypot. A honeypot is a decoy system that simulates a real network or service, but has no actual value or function. A honeypot is designed to attract and trap attackers who try to infiltrate or compromise the network, and then monitor and analyze their behavior and techniques. A honeypot can help the security team learn about the attackers' motives, methods, and tools, and improve their defense

strategies accordingly. References: CompTIA Network+ N10-008 Certification Study Guide, page 358; The Official CompTIA Network+ Student Guide (Exam N10-008), page 14-1.

NEW QUESTION 154

- (Topic 3)

A network administrator requires redundant routers on the network, but only one default gateway is configurable on a workstation. Which of the following will allow for redundant routers with a single IP address?

- A. EIGRP
- B. VRRP
- C. MPLS
- D. STP

Answer: B

Explanation:

Virtual Router Redundancy Protocol (VRRP) is a protocol that allows for redundant routers on the network with a single IP address. VRRP works by creating a virtual router that consists of one master router and one or more backup routers. The virtual router has its own IP address and MAC address that are shared among the routers in the group. The master router responds to traffic sent to the virtual router's IP address, while the backup routers monitor the master router's status. If the master router fails, one of the backup routers takes over as the new master router and continues to respond to traffic. This way, VRRP provides high availability and fault tolerance for the network. References: <https://www.comptia.org/training/books/network-n10-008-study-guide> (page 230)

NEW QUESTION 157

- (Topic 3)

A network administrator is setting up a web-based application for a company. The application needs to be continually accessible to all end users. Which of the following would best ensure this need is fulfilled?

- A. NIC teaming
- B. Cold site
- C. Snapshots
- D. High availability

Answer: D

Explanation:

High availability is a quality of a system or component that assures a high level of operational performance for a given period of time. High availability means that an IT system, component, or application can operate at a high level, continuously, without intervention, for a given time period. High-availability infrastructure is configured to deliver quality performance and handle different loads and failures with minimal or zero downtime. High availability is important for web-based applications, as it ensures that the application is always accessible to the end users, even in the event of a server or component failure. High availability can be achieved by eliminating single points of failure, implementing redundancy, load balancing, and failover mechanisms.

NEW QUESTION 159

- (Topic 3)

A network technician is troubleshooting an issue that involves connecting to a server via SSH. The server has one network interface that does not support subinterfaces. The technician runs a command on the server and receives the following output:

Proto	Local address	Foreign address	State
TCP	0.0.0.0:22	0.0.0.0:0	LISTENING
TCP	0.0.0.0:23	0.0.0.0:0	LISTENING
TCP	0.0.0.0:443	0.0.0.0:0	LISTENING
TCP	10.10.10.15:22	10.10.10.42:21231	ESTABLISHED

On the host, the technician runs another command and receives the following:

Destination	Gateway	Genmask	Flags	Iface
default	31.242.12.9	0.0.0.0	UG	eth0
192.168.1.0	0.0.0.0	255.255.255.0	UG	eth1

Which of the following best explains the issue?

- A. A firewall is blocking access to the server.
- B. The server is plugged into a trunk port.
- C. The host does not have a route to the server.
- D. The server is not running the SSH daemon.

Answer: C

NEW QUESTION 163

- (Topic 3)

An engineer needs to verify the external record for SMTP traffic. The engineer logged in to the server and entered the nslookup command. Which of the following commands should the engineer send before entering the DNS name?

- A. set type=A
- B. is -d company-mail.com
- C. set domain=company.mail.com
- D. set querytype=Mx

Answer: D

NEW QUESTION 166

- (Topic 3)

A network administrator received a report stating a critical vulnerability was detected on an application that is exposed to the internet. Which of the following is the appropriate NEXT step?

- A. Check for the existence of a known exploit in order to assess the risk
- B. Immediately shut down the vulnerable application server.
- C. Install a network access control agent on the server.
- D. Deploy a new server to host the application.

Answer: A

Explanation:

The appropriate next step in this situation would be to check for the existence of a known exploit in order to assess the risk. This is important because it will help the network administrator determine the severity of the vulnerability and the potential impact it could have on the organization. Once the network administrator has assessed the risk, they can then take appropriate action to address the vulnerability. This might include patching the application, deploying a new server to host the application, or implementing other security measures to mitigate the risk. It is generally not advisable to immediately shut down the vulnerable application server, as this could disrupt business operations and cause significant downtime. Similarly, installing a network access control agent on the server may not be the most effective solution, as it would not address the underlying vulnerability.

NEW QUESTION 168

- (Topic 3)

A device is connected to a managed Layer 3 network switch. The MAC address of the device is known, but the static IP address assigned to the device is not. Which of the following features of a Layer 3 network switch should be used to determine the IPv4 address of the device?

- A. MAC table
- B. Neighbor Discovery Protocol
- C. ARP table
- D. IPConfig
- E. ACL table

Answer: C

Explanation:

The ARP table is a database that is used by a device to map MAC addresses to their corresponding IP addresses. When a device sends a packet to another device on the same network, it uses the MAC address of the destination device to deliver the packet. The ARP table allows the device to determine the IP address of the destination device based on its MAC address.

NEW QUESTION 170

- (Topic 3)

A network engineer is concerned about VLAN hopping happening on the network. Which of the following should the engineer do to address this concern?

- A. Configure private VLANs.
- B. Change the default VLAN.
- C. Implement ACLs on the VLAN.
- D. Enable dynamic ARP inspection.

Answer: B

Explanation:

VLAN hopping is a type of attack that allows an attacker to access or manipulate traffic on a different VLAN than the one they are connected to. One way to prevent VLAN hopping is to change the default VLAN on a switch. The default VLAN is the VLAN that is assigned to all ports on a switch by default, usually VLAN 1. If an attacker connects to an unused port on a switch that has not been configured with a specific VLAN, they can access or spoof traffic on the default VLAN. By changing the default VLAN to an unused or isolated VLAN, the network administrator can prevent unauthorized access or interference with legitimate traffic on other VLANs. References: <https://www.comptia.org/training/books/network-n10-008-study-guide> (page 308)

NEW QUESTION 172

- (Topic 3)

Which of the following network types is composed of computers that can all communicate with one another with equal permissions and allows users to directly share what is on or attached to their computers?

- A. Local area network
- B. Peer-to-peer network
- C. Client-server network
- D. Personal area network

Answer: B

Explanation:

A peer-to-peer network is a type of network in which each computer (or node) can communicate directly with any other node, without requiring a central server or authority. Each node can act as both a client and a server, and can share its own resources, such as files, printers, or internet connection, with other nodes. A peer-to-peer network allows users to directly access and exchange what is on or attached to their computers, with equal permissions and responsibilities

NEW QUESTION 173

- (Topic 3)

Which of the following is most likely to have the HIGHEST latency while being the most accessible?

- A. Satellite
- B. DSL
- C. Cable
- D. 4G

Answer: A

NEW QUESTION 177

- (Topic 3)

A network technician is investigating why a core switch is logging excessive amounts of data to the syslog server. The running configuration of the switch showed the following logging information:

```
ip ssh logging events logging level debugging logging host 192.168.1.100 logging synchronous
```

Which of the following changes should the technician make to best fix the issue?

- A. Update the logging host IP.
- B. Change to asynchronous logging.
- C. Stop logging SSH events.
- D. Adjust the logging level.

Answer: D

Explanation:

The logging level debugging is the highest level of logging, which means that the switch will log every possible event, including low-priority and verbose messages. This can result in excessive amounts of data being sent to the syslog server, which can affect the performance and storage of the server. To fix the issue, the technician should adjust the logging level to a lower value, such as informational, warning, or error, depending on the desired level of detail and severity. This will reduce the amount of log data generated by the switch and only send the relevant and necessary messages to the syslog server.

<https://betterstack.com/community/guides/logging/log-levels-explained/>

NEW QUESTION 178

- (Topic 3)

A network administrator received complaints of intermittent network connectivity issues. The administrator investigates and finds that the network design contains potential loop scenarios. Which of the following should the administrator do?

- A. Enable spanning tree.
- B. Configure port security.
- C. Change switch port speed limits.
- D. Enforce 802.1Q tagging.

Answer: A

Explanation:

Spanning tree is a protocol that prevents network loops by dynamically disabling or enabling switch ports based on the network topology. Network loops can cause intermittent connectivity issues, such as broadcast storms, MAC address table instability, and multiple frame transmission. By enabling spanning tree, the network administrator can ensure that there is only one active path between any two network devices at any given time. References:

? CompTIA Network+ N10-008 Certification Exam Objectives, page 91

? CompTIA Network+ Cert Guide: Switching and Virtual LANs, page 172

NEW QUESTION 179

- (Topic 3)

Which of the following would be used to forward requests and replies between a DHCP server and client?

- A. Relay
- B. Lease
- C. Scope
- D. Range

Answer: B

NEW QUESTION 182

- (Topic 3)

Which of the following situations would require an engineer to configure subinterfaces?

- A. In a router-on-a-stick deployment with multiple VLANs
- B. In order to enable inter-VLAN routing on a multilayer switch
- C. When configuring VLAN trunk links between switches
- D. After connecting a router that does not support 802.1Q VLAN tags

Answer: A

Explanation:

A router-on-a-stick is a configuration that allows a single router interface to route traffic between multiple VLANs on a network. A router-on-a-stick requires sub-interfaces to be configured on the router interface, one for each VLAN. Each sub-interface is assigned a VLAN ID and an IP address that belongs to the corresponding VLAN subnet. The router interface is connected to a switch port that is configured as a trunk port, which allows traffic from multiple VLANs to pass through. The router then performs inter-VLAN routing by forwarding packets between the sub-interfaces based on their destination IP addresses. Inter-VLAN routing is a process that allows devices on different VLANs to communicate with each other. Inter-VLAN routing can be performed by a router-on-a-stick configuration, as explained above, or by a multilayer switch that has routing capabilities. A multilayer switch does not require sub-interfaces to be configured for inter-VLAN routing; instead, it uses switch virtual interfaces (SVIs) that are associated with each VLAN. An SVI is a logical interface that represents a VLAN on a switch and has an IP address that belongs to the VLAN subnet. The switch then performs inter-VLAN routing by forwarding packets between the SVIs based on their destination IP addresses.

VLAN trunking is a method that allows traffic from multiple VLANs to be carried over a single link between switches or routers. VLAN trunking requires the use of a tagging protocol, such as 802.1Q, that adds a header to each frame that identifies its VLAN ID. VLAN trunking does not require sub-interfaces to be configured on the switches or routers; instead, it uses trunk ports that are configured to allow or deny traffic from specific VLANs. The switches or routers then forward packets between the trunk ports based on their VLAN IDs.

* 802.1Q is a standard that defines how VLAN tagging and trunking are performed on Ethernet networks.

* 802.1Q adds a 4-byte header to each frame that contains a 12-bit field for the VLAN ID and a 3-bit field for the priority level. 802.1Q does not require sub-interfaces to be configured on the switches or routers; instead, it uses trunk ports that are configured to support 802.1Q tagging and untagging. The switches or routers then forward packets between the trunk ports based on their VLAN IDs and priority levels.

NEW QUESTION 185

- (Topic 3)

A technician is equipped with a tablet, a smartphone, and a laptop to troubleshoot a switch with the help of support over the phone. However, the technician is having issues interconnecting all these tools in troubleshooting the switch. Which Of the following should the technician use to gain connectivity?

- A. PAN
- B. WAN
- C. LAN
- D. MAN

Answer: A

Explanation:

A PAN stands for Personal Area Network and it is a type of network that connects devices within a small range, such as a few meters. A PAN can use wireless technologies such as Bluetooth or Wi-Fi to interconnect devices such as tablets, smartphones, and laptops. A technician can use a PAN to gain connectivity among these tools and troubleshoot the switch.

References: Network+ Study Guide Objective 1.2: Explain devices, applications, protocols and services at their appropriate OSI layers.

NEW QUESTION 188

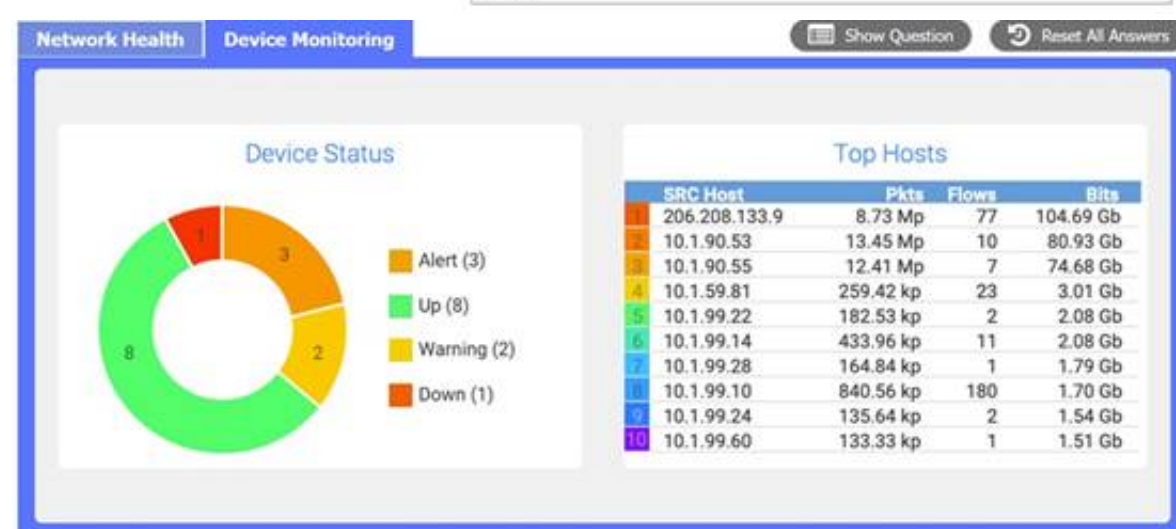
SIMULATION - (Topic 3)

After a recent power outage, users are reporting performance issues accessing the application servers. Wireless users are also reporting intermittent Internet issues.

INSTRUCTIONS

Click on each tab at the top of the screen. Select a widget to view information, then

use the drop-down menus to answer the associated questions. If at any time you would like to bring back the initial state of the simulation, please click the Reset All button.



Which device is experiencing connectivity issues?

Select Answer

Router A
 Router B
 WAP1
 WAP2
 WirelessController
 Switch A
 Switch B
 DHCP Server
 Web Server
 APP Server

Router A

Which workstation IP is generating the MOST traffic?

Select Answer

10.1.99.28
 10.1.99.14
 10.1.99.10
 10.1.99.22
 10.1.99.24
 206.208.133.10
 206.208.133.9
 10.1.50.14
 10.1.50.13
 10.1.59.81
 10.1.90.53
 10.1.90.55

206.208.133.9

A. Mastered
 B. Not Mastered

Answer: A

Explanation:

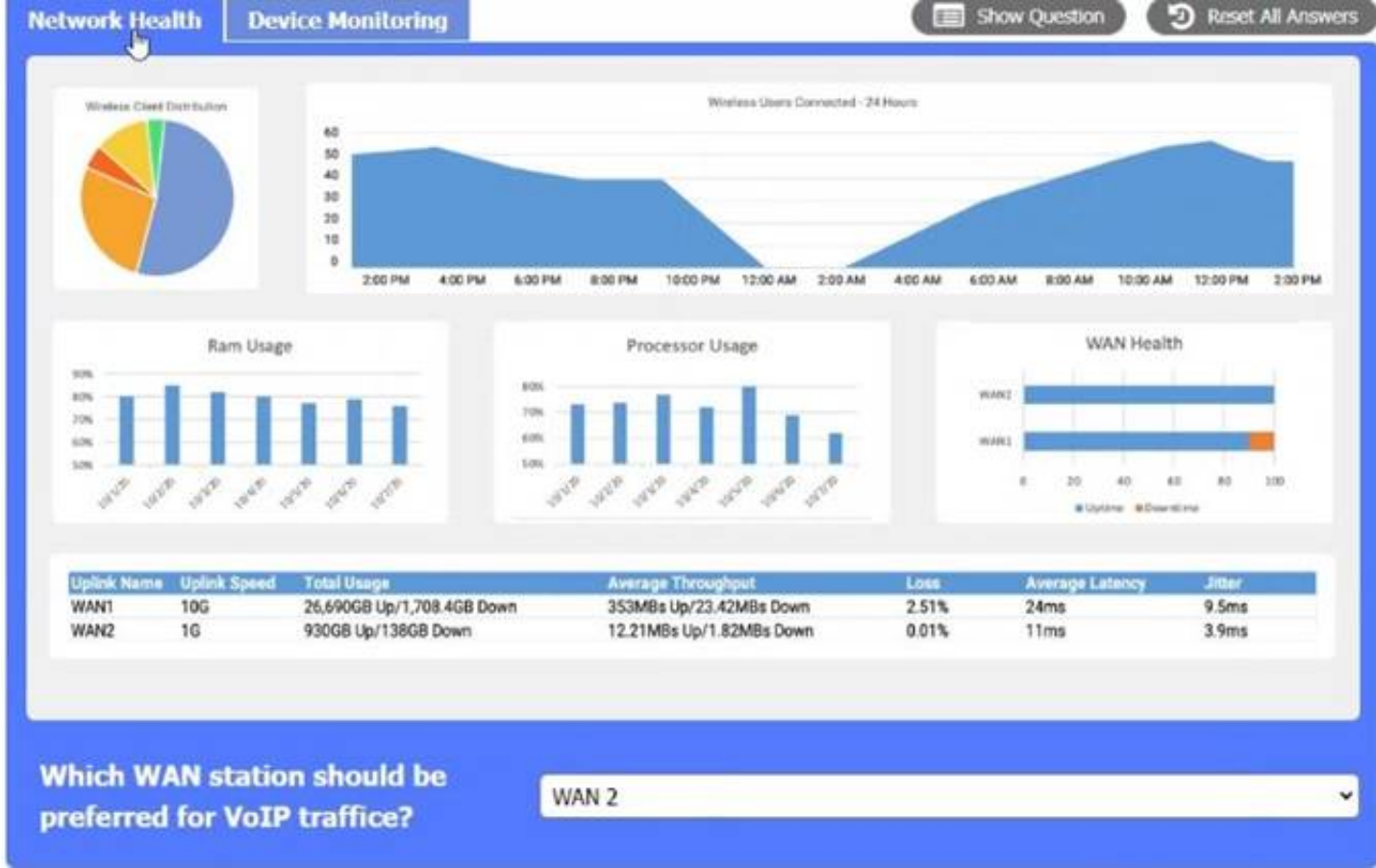
Network Health:

WAN 2 appears to have a lower average latency and loss percentage, which would make it the preferred WAN station for VoIP traffic. VoIP traffic requires low latency and packet loss to ensure good voice quality and reliability. WAN 1 seems to have higher RAM and processor usage, which could also affect the performance of VoIP traffic.

Here's the summary of the key metrics for WAN 1 and WAN 2 from the image provided:

? WAN 1:
 ? WAN 2:

For VoIP traffic, low latency and jitter are particularly important to ensure voice quality. While WAN 1 has higher bandwidth and throughput, it also has higher latency and jitter compared to WAN 2. However, WAN 2 has much lower loss, lower latency, and lower jitter, which are more favorable for VoIP traffic that is sensitive to delays and variation in packet arrival times. Given this information, WAN 2 would generally be preferred for VoIP traffic due to its lower latency, lower jitter, and significantly lower loss percentage, despite its lower bandwidth compared to WAN 1. The high bandwidth of WAN 1 may be more suitable for other types of traffic that are less sensitive to latency and jitter, such as bulk data transfers.



Device Monitoring:
 the device that is experiencing connectivity issues is the APP Server or Router 1, which has a status of Down. This means that the server is not responding to network requests or sending any data. You may want to check the physical connection, power supply, and configuration of the APP Server to troubleshoot the problem.



A screenshot of a computer
 Description automatically generated

NEW QUESTION 191

- (Topic 3)
 Which of the following protocols should be used when Layer 3 availability is of the highest concern?

- A. LACP
- B. LDAP
- C. FHRP
- D. DHCP

Answer: C

Explanation:

FHRP stands for First Hop Redundancy Protocol, which is a group of protocols that allow routers or switches to provide backup or failover for the default gateway in a network. FHRP ensures that the network traffic can reach its destination even if the primary gateway fails or becomes unavailable. Some examples of FHRP

protocols are HSRP, VRRP, and GLBP.

References

- ? 1: CompTIA Network+ N10-008 Exam Subnetting Quiz, question 18
- ? 2: CompTIA Network+ N10-008 Certification Practice Test, question 9
- ? 3: CompTIA Network+ Study Guide: Exam N10-008, 5th Edition, page 263
- ? 4: CompTIA Network+ (N10-008) Practice Exam w/PBQ & Solution, question 5
- ? 5: What's on the CompTIA Network+ 008 certification? | CompTIA, section 3.1

NEW QUESTION 193

- (Topic 3)

Which of the following describes a network in which users and devices need to mutually authenticate before any network resource can be accessed?

- A. Least privilege
- B. Local authentication
- C. Zero trust
- D. Need to know

Answer: C

Explanation:

A zero trust network is a network in which users and devices need to mutually authenticate before any network resource can be accessed. A zero trust network assumes that no one and nothing can be trusted by default, even if they were previously verified or are within the network perimeter. A zero trust network uses various technologies and practices, such as data and log aggregation, cybersecurity analytics, continuous diagnostics and mitigation, user behavior analytics, microsegmentation, and identity and access management, to enforce granular and dynamic policies based on the context and behavior of the users and devices¹²³.

References:

- ? What is Zero Trust? | Internet of Things | CompTIA³
- ? The Death of the Perimeter: Zero Trust is (Almost) Here to Stay | Cybersecurity | CompTIA²
- ? CompTIA Network+ Certification Exam N10-008 Practice Test 17 - ExamCompass¹

NEW QUESTION 194

- (Topic 3)

Which of the following steps of the troubleshooting methodology would most likely include checking through each level of the OSI model after the problem has been identified?

- A. Establish a theory.
- B. Implement the solution.
- C. Create a plan of action.
- D. Verify functionality.

Answer: C

Explanation:

Creating a plan of action is the step of the troubleshooting methodology that would most likely include checking through each level of the OSI model after the problem has been identified. According to the web search results, the troubleshooting methodology consists of the following steps: 12

- ? Define the problem: Identify the symptoms and scope of the problem, and gather relevant information from users, devices, and logs.
- ? Establish a theory: Based on the information collected, hypothesize one or more possible causes of the problem, and rank them in order of probability.
- ? Test the theory: Test the most probable cause first, and if it is not confirmed, eliminate it and test the next one. Repeat this process until the root cause is found or a new theory is needed.
- ? Create a plan of action: Based on the confirmed cause, devise a solution that can resolve the problem with minimal impact and risk. The solution may involve checking through each level of the OSI model to ensure that all layers are functioning properly and that there are no configuration errors, physical damages, or logical inconsistencies³⁴
- ? Implement the solution: Execute the plan of action, and monitor the results. If the problem is not solved, revert to the previous state and create a new plan of action.
- ? Verify functionality: Confirm that the problem is fully resolved and that the network is restored to normal operation. Perform preventive measures if possible to avoid recurrence of the problem.
- ? Document the findings: Record the problem description, the solution, and the outcome. Update any relevant documentation, such as network diagrams, policies, or procedures.

References¹: Troubleshooting Methods for Cisco IP Networks ²: Troubleshooting Methodologies - CBT IT Certification Training ³: How to use the OSI Model to Troubleshoot Networks ⁴: How is the OSI model used in troubleshooting? – Sage-Answer

NEW QUESTION 195

- (Topic 3)

A technician uses a badge to enter a security checkpoint on a corporate campus. An unknown individual quickly walks in behind the technician without speaking. Which of the following types of attacks did the technician experience?

- A. Tailgating
- B. Evil twin
- C. On-path
- D. Piggybacking

Answer: A

Explanation:

Tailgating is a type of physical security attack where an unauthorized person follows an authorized person into a restricted area without their consent or knowledge. Tailgating can allow an attacker to bypass security measures and gain access to sensitive information or resources. In this scenario, the technician experienced tailgating when the unknown individual walked in behind the technician without speaking. Piggybacking is similar to tailgating, but it involves the consent or cooperation of the authorized person. Evil twin is a type of wireless network attack where an attacker sets up a rogue access point that mimics a legitimate one. On-path is a type of network attack where an attacker intercepts and modifies traffic between two parties.

References: CompTIA Network+ Certification Exam Objectives Version 7.0 (N10-007), Objective 3.2: Given a scenario, use appropriate network hardening techniques.

NEW QUESTION 199

- (Topic 3)

Which of the following describes when an active exploit is used to gain access to a network?

- A. Penetration testing
- B. Vulnerability testing
- C. Risk assessment
- D. Posture assessment
- E. Baseline testing

Answer: A

Explanation:

Penetration testing is a type of security testing that is used to assess the security of a system or network by actively exploiting known vulnerabilities. It is used to simulate an attack on the system and identify any weaknesses that may be exploited by malicious actors. As stated in the CompTIA Security+ Study Guide, "penetration testing is a type of security assessment that attempts to gain unauthorized access to networks and systems by exploiting security vulnerabilities."

NEW QUESTION 204

SIMULATION - (Topic 3)

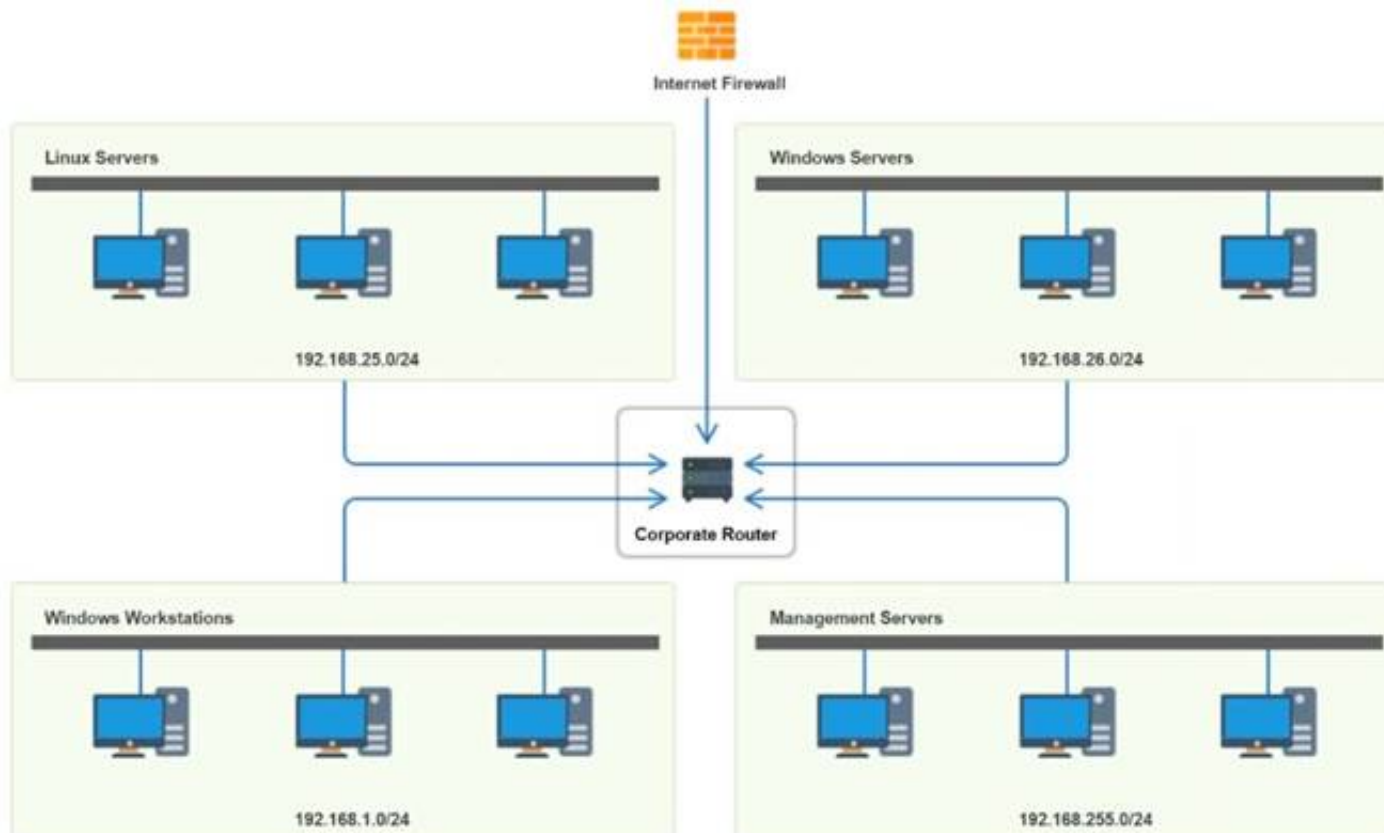
You have been tasked with implementing an ACL on the router that will:

- * 1. Permit the most commonly used secure remote access technologies from the management network to all other local network segments
- * 2. Ensure the user subnet cannot use the most commonly used remote access technologies in the Linux and Windows Server segments.
- * 3. Prohibit any traffic that has not been specifically allowed.

INSTRUCTIONS

Use the drop-downs to complete the ACL

If at any time you would like to bring back the initial state of the simulation, please click the Reset All button.



Router Access Control List ✕					
Rule	Source	Destination	Protocol	Service	Action
1	192.168.1.0 192.168.25.0 192.168.255.0 192.168.26.0 Any	192.168.1.0 192.168.25.0 192.168.255.0 192.168.26.0 Any	TCP	SSH Telnet HTTP RDP VNC SMB Any	Allow Deny
2	192.168.1.0 192.168.25.0 192.168.255.0 192.168.26.0 Any	192.168.1.0 192.168.25.0 192.168.255.0 192.168.26.0 Any	TCP	SSH Telnet HTTP RDP VNC SMB Any	Allow Deny
3	192.168.1.0 192.168.25.0 192.168.255.0 192.168.26.0 Any	192.168.1.0 192.168.25.0 192.168.255.0 192.168.26.0 Any	TCP	SSH Telnet HTTP RDP VNC SMB Any	Allow Deny
4	192.168.255.0	192.168.26.0	TCP	SMB	Allow
5	192.168.255.0	Any	Any	Any	Deny
6	192.168.1.0 192.168.25.0 192.168.255.0 192.168.26.0 Any	192.168.1.0 192.168.25.0 192.168.255.0 192.168.26.0 Any	TCP	SSH Telnet HTTP RDP VNC SMB Any	Allow Deny
7	192.168.1.0 192.168.25.0 192.168.255.0 192.168.26.0 Any	192.168.1.0 192.168.25.0 192.168.255.0 192.168.26.0 Any	TCP	SSH Telnet HTTP RDP VNC SMB Any	Allow Deny
8	192.168.1.0	Any	Any	Any	Allow
9	192.168.1.0 192.168.25.0 192.168.255.0 192.168.26.0 Any	192.168.1.0 192.168.25.0 192.168.255.0 192.168.26.0 Any	Any	SSH Telnet HTTP RDP VNC SMB Any	Allow Deny

- A. Mastered
 B. Not Mastered

Answer: A

Explanation:

Router Access Control List					
Rule	Source	Destination	Protocol	Service	Action
1	192.168.255.0	192.168.26.0	TCP	SSH	Allow
2	192.168.255.0	192.168.25.0	TCP	SSH	Allow
3	192.168.255.0	192.168.1.0	TCP	SSH	Allow
4	192.168.255.0	192.168.26.0	TCP	SMB	Allow
5	192.168.255.0	Any	Any	Any	Deny
6	192.168.1.0	Any	TCP	RDP	Deny
7	192.168.1.0	Any	TCP	VNC	Deny
8	192.168.1.0	Any	Any	Any	Allow
9	Any	Any	Any	Any	Deny

NEW QUESTION 209

- (Topic 3)

Which of the following is MOST appropriate for enforcing bandwidth limits when the performance of an application is not affected by the use of buffering but is heavily impacted by packet drops?

- A. Traffic shaping
- B. Traffic policing
- C. Traffic marking
- D. Traffic classification

Answer: B

Explanation:

Traffic policing is a mechanism that monitors the traffic in any network and enforces a bandwidth limit by discarding packets that exceed a certain rate¹. This can reduce congestion and ensure fair allocation of bandwidth among different applications or users. However, discarding packets can also affect the performance and quality of some applications, especially those that are sensitive to packet loss, such as voice or video. Traffic shaping is a congestion control mechanism that delays packets that exceed a certain rate instead of discarding them¹. This can smooth out traffic bursts and avoid packet loss, but it also introduces latency and jitter. Traffic shaping can be beneficial for applications that can tolerate some delay but not packet loss, such as file transfers or streaming.

Traffic marking is a mechanism that assigns different priority levels to packets based on their type, source, destination, or other criteria². This can help to differentiate between different classes of service and apply different policies or treatments to them. However, traffic marking does not enforce bandwidth limits by itself; it only provides information for other mechanisms to act upon.

Traffic classification is a process that identifies and categorizes packets based on their characteristics, such as protocol, port number, payload, or behavior. This can help to distinguish between different types of traffic and apply appropriate policies or actions to them. However, traffic classification does not enforce bandwidth limits by itself; it only provides input for other mechanisms to use.

NEW QUESTION 210

- (Topic 3)

A coffee shop owner hired a network consultant to provide recommendations for installing a new wireless network. The coffee shop customers expect high speeds even when the network is congested. Which of the following standards should the consultant recommend?

- A. 802.11ac
- B. 802.11ax
- C. 802.11g
- D. 802.11n

Answer: B

Explanation:

802.11ax is the latest and most advanced wireless standard, providing higher speeds, lower latency, and more capacity than previous standards. It also supports OFDMA, which allows multiple devices to share a channel and reduce congestion. The other options are older standards that have lower bandwidth, range, and efficiency than 802.11ax. Therefore, 802.11ax is the best option for the coffee shop owner who wants to provide high speeds even when the network is congested.

NEW QUESTION 214

- (Topic 3)

Which of the following can be used to store various types of devices and provide contactless delivery to users?

- A. Asset tags
- B. Biometrics
- C. Access control vestibules
- D. Smart lockers

Answer: D

NEW QUESTION 219

- (Topic 3)

A customer has an attached USB printer that needs to be shared with other users. The desktop team set up printer sharing. Now, the network technician needs to obtain the necessary information about the PC and share it with other users so they can connect to the printer. Which of the following commands should the technician use to get the required information? (Select TWO).

- A. arp
- B. route
- C. netstat
- D. tcpdump
- E. hostname
- F. ipconfig

Answer: EF

Explanation:

The hostname and ipconfig commands should be used to get the required information about the PC and share it with other users so they can connect to the printer. The hostname command displays the name of the computer on a network. The ipconfig command displays the IP configuration of the computer, including its IP address, subnet mask, default gateway, and DNS servers. These information are necessary for other users to locate and connect to the shared printer on the network. For example, other users can use the UNC path \\hostname\prntername or \\ipaddress\prntername to access the shared printer. References: [CompTIA Network+ Certification Exam Objectives], How to Share a Printer in Windows 10

NEW QUESTION 224

- (Topic 3)

When accessing corporate network resources, users are required to authenticate to each application they try to access. Which of the following concepts does this BEST represent?

- A. SSO
- B. Zero Trust
- C. VPN
- D. Role-based access control

Answer: B

NEW QUESTION 225

- (Topic 3)

A technician is contracted to install a redundant cluster of devices from the ISP In case of a hardware failure within the network. Which of the following would provide the BEST redundant solution in Layer 2 devices?

- A. Multiple routers
- B. Multiple switches
- C. Multiple firewalls
- D. Multiple budgets

Answer: B

NEW QUESTION 229

- (Topic 3)

A company realizes that only half of its employees work in the office, and the employees who work from home no longer need a computer at the office. Which of the following security measures should the network administrator implement when removing a computer from a cubicle?

- A. Disable DHCP on the computer being removed.
- B. Place the switch port in a private VLAN.
- C. Apply a firewall rule to block the computer's IP address.
- D. Remove the employee's network access.

Answer: D

Explanation:

The best security measure to implement when removing a computer from a cubicle is to remove the employee's network access. This will prevent the employee from accessing any network resources or data from the computer, as well as prevent any unauthorized users from using the computer to access the network. Removing the employee's network access can be done by deleting or disabling the user account, revoking the credentials, or changing the permissions.

The other options are not as effective or necessary as removing the employee's network access. They are:

- Disabling DHCP on the computer being removed will prevent the computer from obtaining an IP address from the network, but it will not prevent the computer from using a static IP address or accessing the network through another device.
- Placing the switch port in a private VLAN will isolate the computer from other devices on the network, but it will not prevent the computer from accessing the network through another port or device.
- Applying a firewall rule to block the computer's IP address will prevent the computer from communicating with the network, but it will not prevent the computer from changing its IP address or accessing the network through another device.

References

1: CompTIA Network+ N10-008 Cert Guide - O'Reilly Media 2: Network+ (Plus) Certification | CompTIA IT Certifications

3: 10 Ways to Secure Office Workstations - Computer Security

NEW QUESTION 231

- (Topic 3)

A network consultant is installing a new wireless network with the following specifications:

5GHz
1,300Mbps 20/40/80MHz

Which of the following standards should the network consultant use?

- A. 802.11a
- B. 802.11ac
- C. 802.11b
- D. 802.11n

Answer: B

NEW QUESTION 236

- (Topic 3)

A technician reviews a network performance report and finds a high level of collisions happening on the network. At which of the following layers of the OSI model would these collisions be found?

- A. Layer 1
- B. Layer 3
- C. Layer 4
- D. Layer 7

Answer: A

Explanation:

Collisions occur when two or more devices try to transmit signals on the same physical medium at the same time. This causes interference and data loss. Collisions can only happen at the physical layer of the OSI model, which is responsible for transmitting and receiving raw bits over a physical medium such as a cable or a wireless channel. The physical layer does not have any mechanism to prevent or resolve collisions. Therefore, higher layers of the OSI model, such as the data link layer, need to implement protocols to detect and recover from collisions, such as CSMA/CD for Ethernet networks. ReferencesCollision in computer networkingData Link Layer | Layer 2 | The OSI-Model

NEW QUESTION 238

- (Topic 3)

A computer engineer needs to ensure that only a specific workstation can connect to port 1 on a switch. Which of the following features should the engineer configure on the switch interface?

- A. Port tagging
- B. Port security
- C. Port mirroring
- D. Port aggregation

Answer: B

Explanation:

Port security is a feature that can be configured on a switch interface to limit and identify the MAC addresses of workstations that are allowed to connect to that specific port. This can help ensure that only a specific workstation (or workstations) can connect to the interface. According to the CompTIA Network+ Study Manual, "Port security can be used to specify which MAC addresses are allowed to connect to a particular switch port. If a port security violation is detected, the switch can take a number of different actions, such as shutting down the port, sending an SNMP trap, or sending an email alert."

NEW QUESTION 239

- (Topic 3)

Which of the following is used when a workstation sends a DHCP broadcast to a server on another LAN?

- A. Reservation
- B. Dynamic assignment
- C. Helper address
- D. DHCP offer

Answer: C

Explanation:

A helper address is an IP address that is configured on a router interface to forward DHCP broadcast messages to a DHCP server on another LAN. A DHCP broadcast message is a message that a workstation sends when it needs to obtain an IP address from a DHCP server. Since broadcast messages are not routed across different networks, a helper address is needed to relay the DHCP broadcast message to the DHCP server on another network. References:
<https://www.comptia.org/training/books/network-n10-008-study-guide> (page 199)

NEW QUESTION 243

- (Topic 3)

A network administrator needs to add access points to the network because coverage in some areas is improper. Which of the following should the administrator do first?

- A. Interference analysis
- B. Wireless survey
- C. Traffic analysis
- D. Packet capture

Answer: B

Explanation:

A wireless survey is the first step that a network administrator should do before adding access points to the network. A wireless survey is a process of collecting data about the wireless environment, such as signal strength, channel usage, interference, and coverage. A wireless survey can help the network administrator to

determine the optimal locations and configurations for the access points to provide the best possible coverage and performance for the wireless network. A wireless survey can also help to identify and troubleshoot any issues that may cause improper coverage in some areas.
<https://www.cisco.com/c/en/us/support/docs/wireless/5500-series-wireless-controllers/116057-site-survey-guidelines-wlan-00.html>

NEW QUESTION 245

- (Topic 3)

A technician needs to configure a routing protocol for an internet-facing edge router. Which of the following routing protocols will the technician MOST likely use?

- A. BGP
- B. RIPv2
- C. OSPF
- D. EIGRP

Answer: A

NEW QUESTION 247

- (Topic 3)

An organization has experienced an increase in malicious spear-phishing campaigns and wants to mitigate the risk of hyperlinks from inbound emails. Which of the following appliances would best enable this capability?

- A. Email protection gateway
- B. DNS server
- C. Proxy server
- D. Endpoint email client
- E. Sandbox

Answer: A

Explanation:

An email protection gateway is an appliance that can filter and block malicious emails and attachments before they reach the recipients. An email protection gateway can mitigate the risk of hyperlinks from inbound emails by scanning the links for malicious content, rewriting the links to point to a safe domain, or blocking the links altogether. An email protection gateway can also perform other functions such as spam filtering, antivirus scanning, encryption, and data loss prevention. A DNS server, a proxy server, an endpoint email client, and a sandbox are not appliances that can enable this capability, as they have different purposes and functions.

References

- ? 1: CompTIA Network+ N10-008 Certification Study Guide, page 304
- ? 2: CompTIA Network+ N10-008 Exam Subnetting Quiz, question 15
- ? 3: CompTIA Network+ N10-008 Certification Practice Test, question 5
- ? 4: Email Protection Gateway – N10-008 CompTIA Network+ : 3.2

NEW QUESTION 249

- (Topic 3)

A network administrator needs to set up a file server to allow user access. The organization uses DHCP to assign IP addresses. Which of the following is the best solution for the administrator to set up?

- A. A separate scope for the file server using a /32 subnet
- B. A reservation for the server based on the MAC address
- C. A static IP address within the DHCP IP range
- D. A SLAAC for the server

Answer: B

Explanation:

A reservation for the server based on the MAC address means that the DHCP server will assign a specific IP address to the file server every time it requests one, based on its MAC address. This way, the file server will have a consistent IP address that users can access, without the need to manually configure it or use a separate scope. A reservation also ensures that the IP address of the file server will not be given to any other device by the DHCP server

NEW QUESTION 254

- (Topic 3)

A network technician is investigating why a core switch is logging excessive amounts of data to the syslog server. The running configuration of the switch showed the following logging information:

```
ip ssh logging events
logging level debugging
logging host 192.168.1.100
logging synchronous
```

Which of the following changes should the technician make to BEST fix the issue?

- A. Update the logging host IP
- B. Change to asynchronous logging.
- C. Stop logging SSH events.
- D. Adjust the logging level.

Answer: D

Explanation:

The logging level is set to debugging, which is the most verbose and detailed level of logging. This means that the switch will send a lot of information to the syslog

server, which can cause excessive network traffic and storage consumption. To fix the issue, the technician should adjust the logging level to a lower value, such as informational or warning, which will reduce the amount of data logged

NEW QUESTION 258

- (Topic 3)

A network technician is selecting new network hardware, and availability is the main concern. Which of the following availability concepts should the technician consider?

- A. RTO
- B. MTTR
- C. MTBF
- D. RPO

Answer: A

Explanation:

The availability concept that the network technician should consider when selecting new network hardware is RTO (Recovery Time Objective). RTO is a metric that defines the maximum acceptable time for restoring a system or service after a disruption or failure. RTO is based on the impact and cost of downtime for the business and its customers. RTO helps determine the level of redundancy and backup needed for network hardware to ensure high availability and minimize downtime. References: CompTIA Network+ N10-008 Certification Study Guide, page 346; The Official CompTIA Network+ Student Guide (Exam N10-008), page 13-9.

NEW QUESTION 259

- (Topic 3)

A network administrator is notified that a user cannot access resources on the network. The network administrator checks the physical connections to the workstation labeled User 3 and sees the Ethernet is properly connected. However, the network interface's indicator lights are not blinking on either the computer or the switch. Which of the following is the most likely cause?

- A. The switch failed.
- B. The default gateway is wrong.
- C. The port is shut down.
- D. The VLAN assignment is incorrect.

Answer: C

Explanation:

If the port is shut down, it means that the switch has disabled the port and is not sending or receiving any traffic on it. This would explain why the network interface's indicator lights are not blinking on either the computer or the switch, and why the user cannot access resources on the network. The port could be shut down manually by the network administrator, or automatically by the switch due to security or error conditions.

References

? Port shutdown is one of the common switch configuration options covered in Objective 2.3 of the CompTIA Network+ N10-008 certification exam1.

? Port shutdown can cause the network interface's indicator lights to stop blinking2.

? Port shutdown can prevent the user from accessing resources on the network3.

1: CompTIA Network+ Certification Exam Objectives, page 5 2: CompTIA Network+ N10- 008: Switch not forwarding frames on trunked port3 3: Cable Management – N10-008 CompTIA Network+ : 1.3

NEW QUESTION 264

- (Topic 3)

Which of the following describes the BEST device to configure as a DHCP relay?

- A. Bridge
- B. Router
- C. Layer 2 switch
- D. Hub

Answer: B

Explanation:

Normally, routers do not forward broadcast traffic. This means that each broadcast domain must be served by its own DHCP server. On a large network with multiple subnets, this would mean provisioning and configuring many DHCP servers. To avoid this scenario, a DHCP relay agent can be configured to provide forwarding of DHCP traffic between subnets. Routers that can provide this type of forwarding are described as RFC 1542 compliant. The DHCP relay intercepts broadcast DHCP frames, applies a unicast address for the appropriate DHCP server, and forwards them over the interface for the subnet containing the server. The DHCP server can identify the original IP subnet from the packet and offer a lease from the appropriate scope. The DHCP relay also performs the reverse process of directing responses from the server to the appropriate client subnet.

NEW QUESTION 267

- (Topic 3)

Which of the following OSI model layers would allow a user to access and download files from a remote computer?

- A. Session
- B. Presentation
- C. Network
- D. Application

Answer: D

Explanation:

The application layer of the OSI model (Open Systems Interconnection) is responsible for providing services to applications that allow users to access and download files from a remote computer. These services include file transfer, email, and web access, as well as other related services. In order for a user to access

and download files from a remote computer, the application layer must provide the necessary services that allow the user to interact with the remote computer.

NEW QUESTION 269

- (Topic 3)

Which of the following attacks, if successful, would provide a malicious user who is connected to an isolated guest network access to the corporate network?

- A. VLAN hopping
- B. On-path attack
- C. IP spoofing
- D. Evil twin

Answer: A

Explanation:

The attack which, if successful, would provide a malicious user who is connected to an isolated guest network access to the corporate network is VLAN hopping. VLAN hopping is an attack technique which involves tricking a switch into sending traffic from one VLAN to another. This is done by sending specially crafted packets, which force the switch to send traffic from one VLAN to another, thus allowing the malicious user to gain access to the corporate network. VLAN hopping is an attack technique which involves tricking a switch into sending traffic from one VLAN to another. This is done by sending specially crafted packets, which force the switch to send traffic from one VLAN to another, thus allowing the malicious user to gain access to the corporate network. According to the CompTIA Network+ N10-008 Exam Guide VLAN hopping is a type of attack that is used to gain access to network resources that are not meant to be accessible by a user on a guest network.

NEW QUESTION 270

- (Topic 3)

A network manager wants to view network traffic for devices connected to a switch. A network engineer connects an appliance to a free port on the switch and needs to configure the switch port connected to the appliance. Which of the following is the best option for the engineer to enable?

- A. Trunking
- B. Port mirroring
- C. Full duplex
- D. SNMP

Answer: B

Explanation:

Port mirroring is a feature that allows a switch to copy the traffic from one or more ports to another port, where a network analyzer or a monitoring device can capture and analyze the traffic. Port mirroring is useful for troubleshooting and security purposes, as it allows the network engineer to see the traffic that is passing through the switch without affecting the normal operation of the network.

References

? 1: Port Mirroring - CompTIA Network+ Certification (N10-008): The Total Course [Video]

? 2: CompTIA Network+ Certification Exam Objectives, page 5

? 3: CompTIA Network+ N10-005: 2.1 – Port Mirroring - Professor Messer IT Certification Training Courses

? 4: CompTIA Network+ N10-005: 1.4 – Port Mirroring

NEW QUESTION 274

- (Topic 3)

A Wi-Fi network was originally configured to be able to handle interference from a microwave oven. The microwave oven was recently removed from the office. Now the network administrator wants to optimize the system to maximize the range of the signal. The main sources of signal degradation are the numerous cubicles and wooden walls between the WAP and the intended destination. Which of the following actions should the administrator take?

- A. Implement CDMA.
- B. Change from omni to directional.
- C. Change the SSID.
- D. Change the frequency.

Answer: D

Explanation:

- the microwave was already removed from the office

- the signal is OK now

- Notice that the question mentions "numerous cubicles and wooden walls" - meaning the signal now won't have the interference as before

- KEY POINT: the admin wants to "maximize the range of the signal:"

Manually change the frequency to 2.4 GHz for more reliable speeds and range. While 5 GHz gives you a stronger signal, it doesn't travel through walls or ceilings as well, so it doesn't give you the best range.

"Microwave ovens: Older microwave ovens, which might not have sufficient shielding, can emit relatively high-powered signals in the 2.4GHz band, resulting in significant interference with WLAN devices operating in the 2.4GHz band."

NEW QUESTION 277

- (Topic 3)

A SQL server connects over port:

- A. 445.
- B. 995
- C. 1433.
- D. 1521.

Answer: C

Explanation:

A SQL server connects over port 1433. Port numbers are used to identify specific applications or services on a network device. Port 1433 is the default port for Microsoft SQL Server, which is a relational database management system that uses SQL (Structured Query Language) to store and manipulate data. References: CompTIA Network+ N10-008 Certification Study Guide, page 147; The Official CompTIA Network+ Student Guide (Exam N10-008), page 6-4.

NEW QUESTION 279

- (Topic 3)

A systems administrator wants to use the least amount of equipment to segment two departments that have cables terminating in the same room. Which of the following would allow this to occur?

- A. A load balancer
- B. A proxy server
- C. A Layer 3 switch
- D. A hub
- E. A Layer 7 firewall
- F. The RSSI was not strong enough on the link

Answer: D

NEW QUESTION 280

- (Topic 3)

An administrator would like to create a fault-tolerant ring between three switches within a Layer 2 network. Which of the following Ethernet features should the administrator employ?

- A. Spanning Tree Protocol
- B. Open Shortest Path First
- C. Port mirroring
- D. An interior gateway protocol

Answer: A

Explanation:

Spanning Tree Protocol (STP) is a network protocol that ensures a loop-free topology in Ethernet networks by actively blocking certain links and enabling others. STP prevents loops by putting some of the links in a blocking state, effectively creating a loop-free topology. This ensures that there is only one active path between two devices, which helps prevent network loops and the associated problems (such as broadcast storms) that can result from them. STP is used to create a fault-tolerant ring between three switches within a Layer 2 network.

NEW QUESTION 284

- (Topic 3)

Which of the following can be used to decrease latency during periods of high utilization of a firewall?

- A. Hot site
- B. NIC teaming
- C. HA pair
- D. VRRP

Answer: B

Explanation:

NIC Teaming, also known as load balancing and failover (LBFO), allows multiple network adapters on a computer to be placed into a team for the following purposes:

(<https://www.bing.com/search?q=what+is+nic+teaming+used+for%3F&form=QBLH&sp=-1&pq=what+is+nic+teaming+used+for&sc=10-28&q=n&sk=&cvid=13882A9A9B584D8099F4ABCAD034E821&ghsh=0&ghacc=0&ghpl=>)

NEW QUESTION 287

- (Topic 3)

A network administrator is trying to add network redundancy for the server farm. Which of the following can the network administrator configure to BEST provide this capability?

- A. VRRP
- B. DNS
- C. UPS
- D. RPO

Answer: A

Explanation:

VRRP is an open standard protocol, which is used to provide redundancy in a network. It is a network layer protocol (protocol number-112). The number of routers (group members) in a group acts as a virtual logical router which will be the default gateway of all the local hosts. If one router goes down, one of the other group members can take place for the responsibilities for forwarding the traffic.

NEW QUESTION 290

- (Topic 3)

Which of the following can be used to validate domain ownership by verifying the presence of pre-agreed content contained in a DNS record?

- A. SOA
- B. SRV
- C. AAA
- D. TXT

Answer: D

Explanation:

"One final usage of the TXT resource record is how some cloud service providers, such as Azure, validate ownership of custom domains. You are provided with data to include in your TXT record, and once that is created, the domain is verified and able to be used. The thought is that if you control the DNS, then you own the domain name."

NEW QUESTION 295

- (Topic 3)

A new office space is being designed. The network switches are up. but no services are running yet A network engineer plugs in a laptop configured as a DHCP client to a switch Which of the following IP addresses should be assigned to the laptop?

- A. 10.1.1.1
- B. 169.254.1.128
- C. 172.16.128.128
- D. 192.168.0.1

Answer: B

Explanation:

When a DHCP client is connected to a network and no DHCP server is available, the client can automatically configure a link-local address in the 169.254.0.0/16 range using the Automatic Private IP Addressing (APIPA) feature. So, the correct answer is option B, 169.254.1.128. This is also known as an APIPA address.

Reference: CompTIA Network+ Study Guide, Exam N10-007, Fourth Edition, by Todd

Lammle (Chapter 4: IP Addressing)

NEW QUESTION 296

- (Topic 3)

A network technician is planning a network scope. The web server needs to be within 12.31.69.1 to 12.31.69.29. Which of the following would meet this requirement?

- A. Lease time
- B. Range reservation
- C. DNS
- D. Superscope

Answer: A

NEW QUESTION 299

- (Topic 3)

A network administrator replaced a faulty NIC in a printer, but the printer is still not reachable. The printer is configured with the correct IP address, mask, and gateway, and a link light is lit on the switch port that the printer is attached to.

Which of the following is the best command for the administrator to run first on the switch?

- A. show vlan
- B. show route
- C. show arp
- D. show config

Answer: A

Explanation:

The best command for the administrator to run first on the switch is show vlan, which displays the VLAN configuration information on the switch, such as the VLAN IDs, names, and ports. The show vlan command can help the administrator to verify if the printer is assigned to the correct VLAN, and if there is any mismatch or misconfiguration that prevents the printer from being reachable. The show route command displays the routing table on the switch, which is not relevant for the printer connectivity, as the printer is configured with the correct gateway. The show arp command displays the ARP cache on the switch, which maps the IP addresses to the MAC addresses of the devices. The show arp command can help the administrator to check if the switch has learned the MAC address of the printer, but it is not the best command to run first, as the ARP cache can be cleared or updated frequently. The show config command displays the running configuration on the switch, which includes the VLAN configuration, but it also includes other information that is not related to the printer issue, such as the hostname, the interface settings, the security settings, and so on. The show config command can be overwhelming and time-consuming to analyze, so it is not the best command to run first.

References

? 1: VLANs and Trunking – N10-008 CompTIA Network+ : 2.3

? 2: N10-008 CompTIA Network+ : 5.5

? 3: Interface Configurations – N10-008 CompTIA Network+ : 2.3

? 4: Configuring VLANs – CompTIA Network+ N10-006 – 2.6

NEW QUESTION 304

- (Topic 3)

A network administrator needs to change where the outside DNS records are hosted.

Which of the following records should the administrator change at the registrar to accomplish this task?

- A. NS
- B. SOA
- C. PTR
- D. CNAME

Answer: A

Explanation:

NS stands for Name Server, and it is a DNS record that specifies which servers are authoritative for a domain. The registrar is the entity that manages the domain registration and delegation, and it maintains the NS records for each domain. To change where the outside DNS records are hosted, the network administrator needs to change the NS records at the registrar to point to the new DNS servers that will host the outside DNS records.

References:

? DNS Record Types – N10-008 CompTIA Network+ : 1.61

? CompTIA Network+ N10-008 Cert Guide, page 1472

NEW QUESTION 306

- (Topic 3)

A network administrator is getting reports of some internal users who cannot connect to network resources. The users state they were able to connect last week, but not today. No changes have been configured on the network devices or server during the last few weeks. Which of the following is the MOST likely cause of the issue?

- A. The client DHCP scope is fully utilized
- B. The wired network is experiencing electrical interference
- C. The captive portal is down and needs to be restarted
- D. SNMP traps are being received
- E. The packet counter on the router interface is high.

Answer: A

NEW QUESTION 311

- (Topic 3)

Which of the following should be used to associate an IPv6 address with a domain name?

- A. AAAA
- B. A
- C. SOA
- D. TXT

Answer: A

Explanation:

An AAAA record is a type of DNS record that maps a domain name to an IPv6 address. It is similar to an A record, which maps a domain name to an IPv4 address, but it uses a 128-bit address instead of a 32-bit one. An AAAA record allows a domain name to be resolved by both IPv4 and IPv6 clients, and it is necessary for accessing websites and services that use IPv6.

NEW QUESTION 312

- (Topic 3)

Classification using labels according to information sensitivity and impact in case of unauthorized access or leakage is a mandatory component of:

- A. an acceptable use policy.
- B. a memorandum of understanding.
- C. data loss prevention,
- D. a non-disclosure agreement.

Answer: C

Explanation:

Data loss prevention (DLP) is a set of tools and processes that aim to prevent unauthorized access or leakage of sensitive information. One of the components of DLP is data classification, which involves labeling data according to its information sensitivity and impact in case of unauthorized disclosure. Data classification helps to identify and protect the most critical and confidential data and apply appropriate security controls and policies. References: Network+ Study Guide Objective 5.1: Explain the importance of policies, processes and procedures for IT governance. Subobjective: Data loss prevention.

NEW QUESTION 317

- (Topic 3)

An engineer is gathering data to determine the effectiveness of UPSs in use at remote retail locations. Which of the following statistics can the engineer use to determine the availability of the remote network equipment?

- A. Uptime
- B. NetFlow baseline
- C. SNMP traps
- D. Interface statistics

Answer: A

Explanation:

Uptime is a statistic that can be used to determine the availability of the remote network equipment. Uptime is the amount of time that a device or system has been running without experiencing any failures or disruptions. It is commonly expressed as a percentage of total time, such as 99.99% uptime. By measuring the uptime of the network equipment at the remote retail locations, the engineer can determine how reliable and available the equipment is.

NEW QUESTION 319

.....

Thank You for Trying Our Product

We offer two products:

1st - We have Practice Tests Software with Actual Exam Questions

2nd - Questions and Answers in PDF Format

N10-009 Practice Exam Features:

- * N10-009 Questions and Answers Updated Frequently
- * N10-009 Practice Questions Verified by Expert Senior Certified Staff
- * N10-009 Most Realistic Questions that Guarantee you a Pass on Your First Try
- * N10-009 Practice Test Questions in Multiple Choice Formats and Updates for 1 Year

100% Actual & Verified — Instant Download, Please Click
[Order The N10-009 Practice Test Here](#)