

Exam Questions 300-415

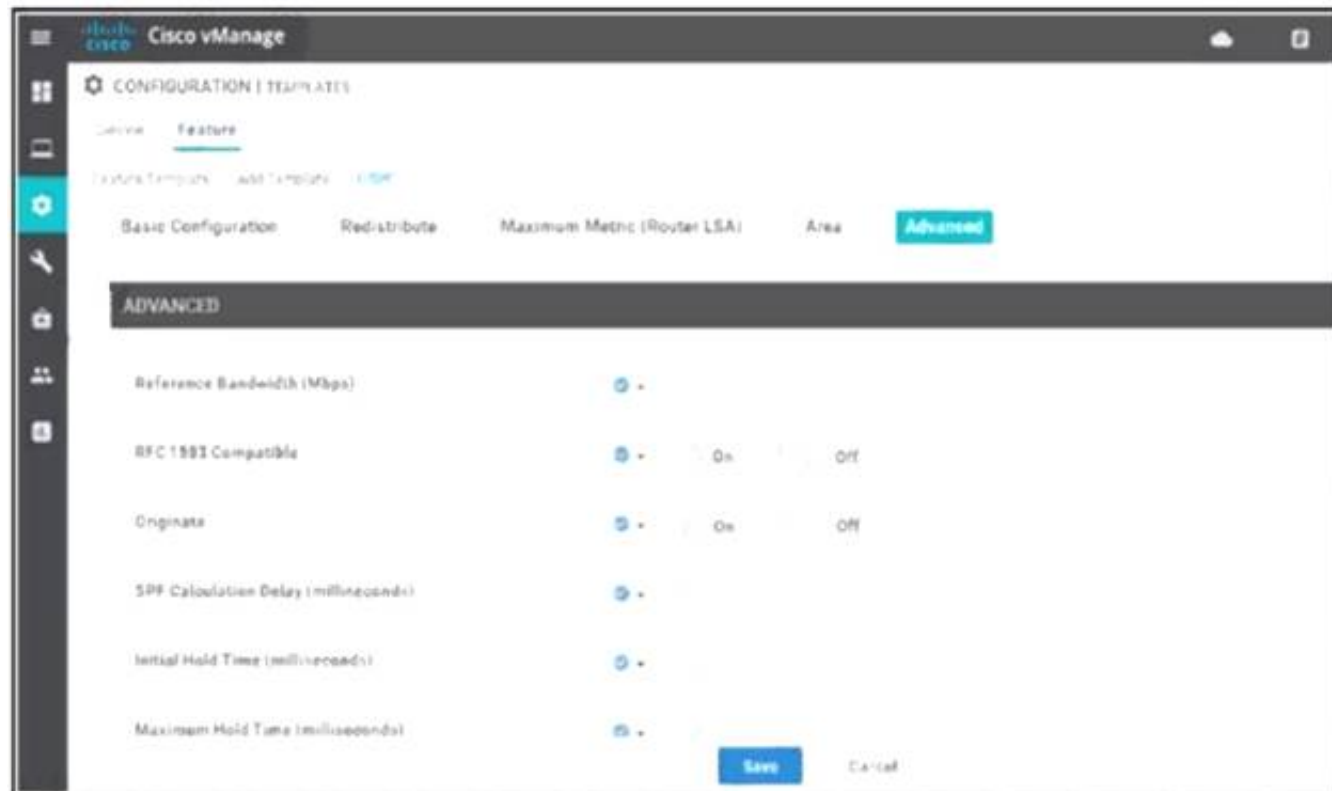
Implementing Cisco SD-WAN Solutions (ENSDWI)

<https://www.2passeasy.com/dumps/300-415/>



NEW QUESTION 1

Refer to the exhibit.



A network administrator is configuring OSPF advanced configuration parameters from a template using the vManager GUI for a branch WAN Edge router to calculate the cost of summary routes to an ASBR. Which action achieves this configuration?

- A. Disable RFC 1583 Compatible
- B. Enable Originate
- C. Enable RFC 1M3 Compatible
- D. Disable Original

Answer: C

NEW QUESTION 2

Which two image formats are supported for controller codes? (Choose two.)

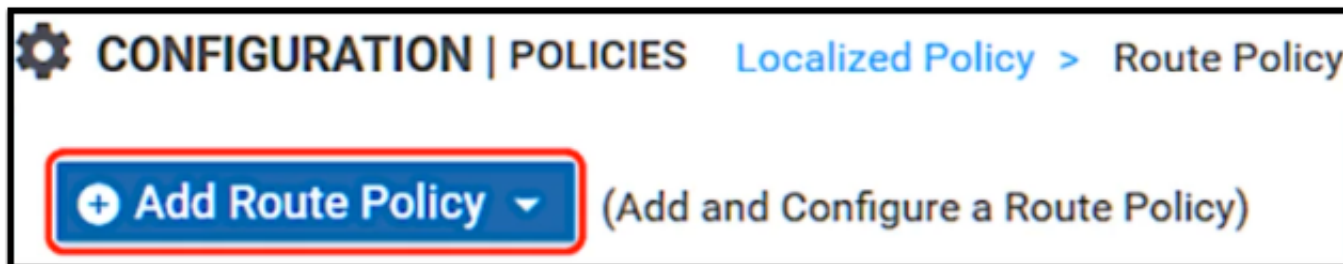
- A. .nxos
- B. .qcow2
- C. .ova
- D. .bin
- E. Tgz

Answer: BC

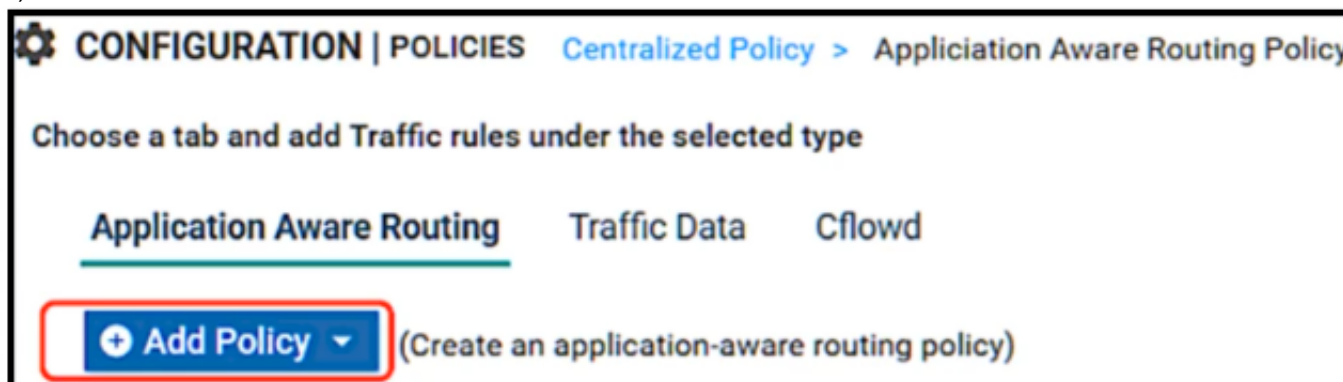
NEW QUESTION 3

An engineer must configure the SD-WAN Edge router to identify DSCP 26 traffic coming from the router's local site and then change the DSCP value to DSCP 18 before sending it over to the SD-WAN fabric. What are the two ways to create the required configuration? (Choose two).

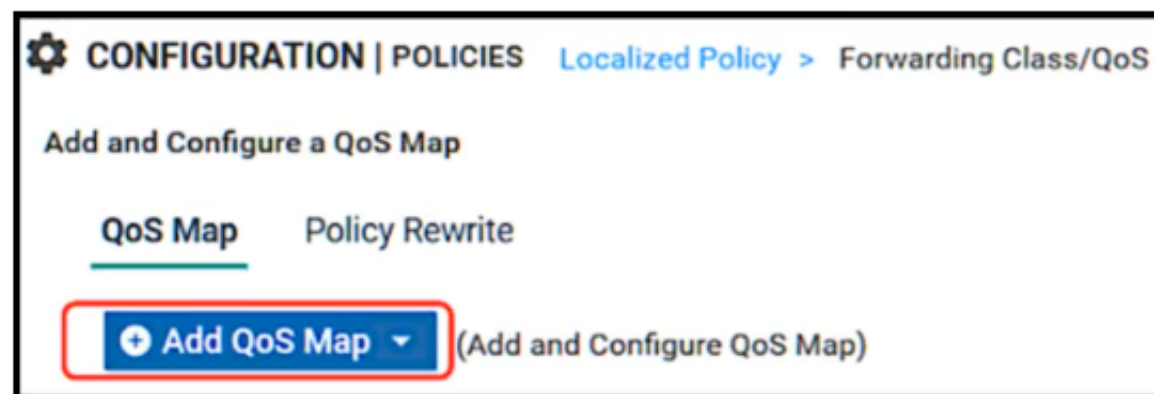
A)



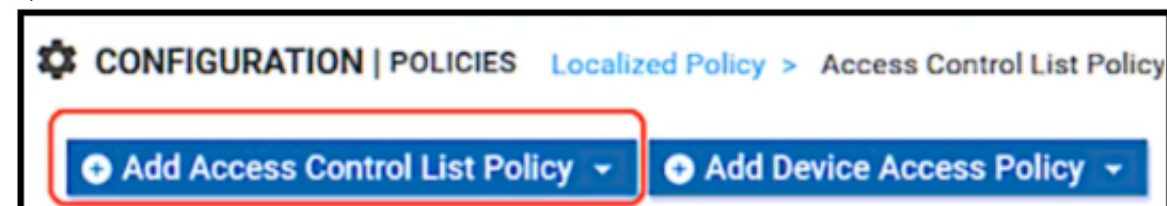
B)



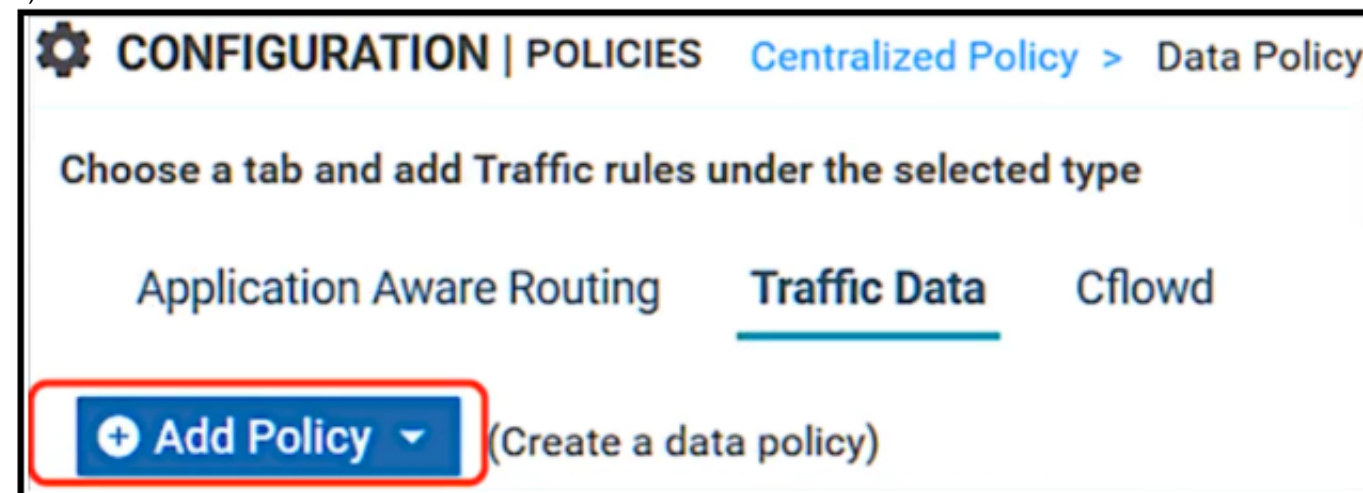
C)



D)



E)



- A. Option A
- B. Option B
- C. Option C
- D. Option D
- E. Option E

Answer: AC

NEW QUESTION 4

An engineer is configuring a centralized policy to influence network route advertisement. Which controller delivers this policy to the fabric?

- A. vSmart
- B. vManage
- C. WAN Edge
- D. vBond

Answer: A

Explanation:

vSmart controllers are the centralized brain of the solution; they implement policies and connectivity between SD-WAN branches. The centralized policy engine in Cisco vSmart controllers provides policy constructs to manipulate routing information, access control, segmentation, extranets, and service chaining.

NEW QUESTION 5

Refer to the exhibit.

```
vpn 0
interface ge0/0
ip address 10.1.15.15/24
tunnel-interface
color lte
allow-service dhcp
allow-service dns
allow-service icmp

no allow-service sshd
no allow-service ntp
no allow-service stun
!
no shutdown
shaping-rate
```

Which shaping-rate does the engineer use to shape traffic at 9 Mbps?

- A. 9
- B. 9000
- C. 90000
- D. 9000000

Answer: B

Explanation:

<https://www.cisco.com/c/en/us/td/docs/routers/sdwan/command/sdwan-cr-book/config-cmd.html#wp421715213>

NEW QUESTION 6

Which component of the Cisco SD-WAN secure extensible network provides a single pane of glass approach to network monitoring and configuration?

- A. APIC-EM
- B. vSmart
- C. vManage
- D. vBond

Answer: C

Explanation:

Cisco vManage provides a single-pane-of-glass management to manage all controller components and both enterprise and extended enterprise WAN edge devices. The comprehensive vManage GUI has dashboard, monitor, configuration, tools, maintenance, administration, and analytics as the top-level menus.

NEW QUESTION 7

Which configuration component is used in a firewall security policy?

- A. numbered sequences of match-action pairs
- B. application match parameters
- C. URL filtering policy
- D. intrusion prevention policy

Answer: A

NEW QUESTION 8

How many subnets are necessary in Azure VNet for a WAN Edge device to function in the cloud deployment?

- A. CSR is the WAN Edge device that is supported in the Microsoft clou
- B. The Microsoft underlay cloud fabric performs the management function.
- C. There must be three subnets in VNet: management, public, and services.
- D. One public subnet is required in VNe
- E. The Microsoft underlay cloud fabric performs all of the routing functions for WAN Edge.
- F. Public and services subnets are required in VNe
- G. The Microsoft underlay cloud fabric performs the management function.

Answer: D

NEW QUESTION 9

An engineering team must prepare a traffic engineering policy where an MPLS circuit is preferred for traffic coming from the Admin VLAN Internet should be used as a backup only. Which configuration fulfill this requirement?

A)

```
policy
data-policy _TE
vpn-list VPN_10
sequence 1
match
source-data-prefix-list Source_Prefix
destination-data-prefix-list Dest_Prefix
action accept
set
vpn 10
tloc-list Hub_TLOCs
default-action reject
!
tloc-list Hub_TLOCs
tloc 10.4.4.4 color mpls encap ipsec preference 300
tloc 10.4.4.4 color public-internet encap ipsec preference 600
```

B)


```

policy
data-policy _TE
vpn-list VPN_10
sequence 1
match
source-data-prefix-list Source_Prefix
destination-data-prefix-list Dest_Prefix
action accept
nat use-vpn 0
nat fallback
default-action reject
!
tloc-list Hub_TLOCs
tloc 10.4.4.4 color mpls encap ipsec preference 300
tloc 10.4.4.4 color public-internet encap ipsec preference 600

```

C)

```

policy
data-policy _TE
vpn-list VPN_10
sequence 1
match
source-data-prefix-list Source_Prefix
destination-data-prefix-list Dest_Prefix
action accept
set
vpn 10
tloc-list Hub_TLOCs
default-action accept
!
tloc-list Hub_TLOCs
tloc 10.4.4.4 color mpls encap ipsec preference 600
tloc 10.4.4.4 color public-internet encap ipsec preference 300

```

D)

```

policy
data-policy _TE
vpn-list VPN_10
sequence 1
match
source-data-prefix-list Source_Prefix
destination-data-prefix-list Dest_Prefix
action accept
set
vpn 512
tloc-list Hub_TLOCs
default-action accept
!
tloc-list Hub_TLOCs
tloc 10.4.4.4 color mpls encap ipsec preference 600
tloc 10.4.4.4 color public-internet encap ipsec preference 300

```

- A. Option A
- B. Option B
- C. Option C
- D. Option D

Answer: C

NEW QUESTION 10

Which hardware component is involved in the Cisco SD-WAN authentication process for ISR platforms?

- A. TPMD
- B. ZTP
- C. TPC
- D. SUDI

Answer: D

NEW QUESTION 10

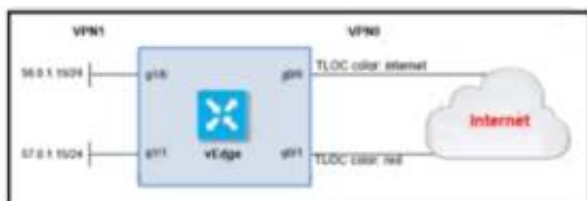
On which device is a service FW address configured to Insert firewall service at the hub?

- A. vEdge at the branch
- B. vSmart at the hub
- C. vEdge at the hub
- D. vSmart at the branch

Answer: C

NEW QUESTION 14

Refer to the exhibit.



The ge0/0 interface connects to a 30-MB link. A network administrator wants to always have 10 MB available for high priority traffic. When lower-priority traffic busts exceed 20 MB. Traffic should be redirected to the second WAN interface ge0/1. Which set of configurations accomplishes this task?

A)

```
policy
  policer bursty-traffic
    rate 10000
    burst 20000
    exceed drop
  access-list policer-bursty-traffic
    sequence 10
    match
      source-ip 56.0.1.0/24
    action accept
      policer bursty-traffic
    default-action accept
```

B)

```
policy
  policer bursty-traffic
    rate 100000
    burst 20000
    exceed continue
  access-list policer-bursty-traffic
    sequence 10
    match
      source-ip 56.0.1.0/24
    action accept
      policer bursty-traffic
    default-action accept
```

C)

```
policy
  policer bursty-traffic
    rate 1000000
    burst 20000
    exceed remark
  access-list policer-bursty-traffic
    sequence 10
    match
      source-ip 56.0.1.0/24
    action accept
      policer bursty-traffic
    default-action accept
```

D)

```
policy
  policer bursty-traffic
    rate 10
    burst 20
    exceed remark
  access-list policer-bursty-traffic
    sequence 10
    match
      source-ip 56.0.1.0/24
    action accept
      policer bursty-traffic
    default-action accept
```

- A. Option A
- B. Option B
- C. Option C
- D. Option D

Answer: C

Explanation:

```
policy
  policer bursty-traffic
    rate 1000000
    burst 20000
    exceed remark
  access-list policer-bursty-traffic
    sequence 10
    match
      source-ip 56.0.1.0/24
    action accept
      policer bursty-traffic
    default-action accept
```

<https://www.cisco.com/c/dam/en/us/td/docs/routers/sdwan/configuration/config-18-4.pdf#page=546>

NEW QUESTION 17

Which set of platforms must be in separate VMS as of release 16.1?

- A. vSmart and WAN Edge
- B. WAN Edge and vBond
- C. vManage and vSmart
- D. vBond and vSmart

Answer: D

NEW QUESTION 22

What are the two protocols redistributed into OMP? (Choose two.)

- A. OSPF
- B. RIP
- C. LDP
- D. RSVP
- E. EIGRP

Answer: AE

Explanation:

Supported Protocols

This section explains the protocols supported for unicast routing.

- OMP Routing Protocol
- BGP and OSPF Routing Protocols
- OSPFv3
- EIGRP

<https://www.cisco.com/c/en/us/td/docs/routers/sdwan/configuration/routing/ios-xe-17/routing-book-xe/m-unicas>

NEW QUESTION 24

Which API call retrieves a list of all devices in the network?

- A. https://vmanage_IP_address/dataservice/system/device/{{model}}
- B. http://vmanage_IP_address/dataservice/system/device/{{model}}
- C. http://vmanage_IP_address/api-call/system/device/{{model}}
- D. https://vmanage_IP_address/api-call/system/device/{{model}}

Answer: A

Explanation:

Display all available vEdge routers in the overlay network.

```
GET https://{vmanage-ip-address}/dataservice/system/device/vedges
```

NEW QUESTION 28

Which two different states of a WAN Edge certificate are shown on vManage? (Choose two.)

- A. inactive
- B. active
- C. staging
- D. invalid
- E. provisioned

Answer: BE

NEW QUESTION 33

What are the default username and password for vSmart Controller when it is installed on a VMware ESXi hypervisor?

- A. username Cisco password admin
- B. username admin password Cisco
- C. username Cisco password Cisco
- D. username admin password admin

Answer: D

NEW QUESTION 34

Which platform cannot provide IPS and URL filtering capabilities?

- A. Cisco CSR 1000V
- B. Cisco ISR 1000
- C. Cisco Catalyst 8300
- D. Cisco ISR 4000

Answer: B

NEW QUESTION 39

A network administrator configures SNMPv3 on a Cisco WAN Edge router from CLI for monitoring purposes. How many characters are supported by the snmp user username command?

- A. from 1 to 8
- B. from 1 to 16
- C. from 1 to 32
- D. from 1 to 48

Answer: C

NEW QUESTION 43

Which type of certificate is installed on vManage for a user to access vManage via a web browser?

- A. Controller Certificate
- B. Web Server Certificate
- C. WAN Edge Certificate
- D. SD-AVC Certificate

Answer: B

NEW QUESTION 47

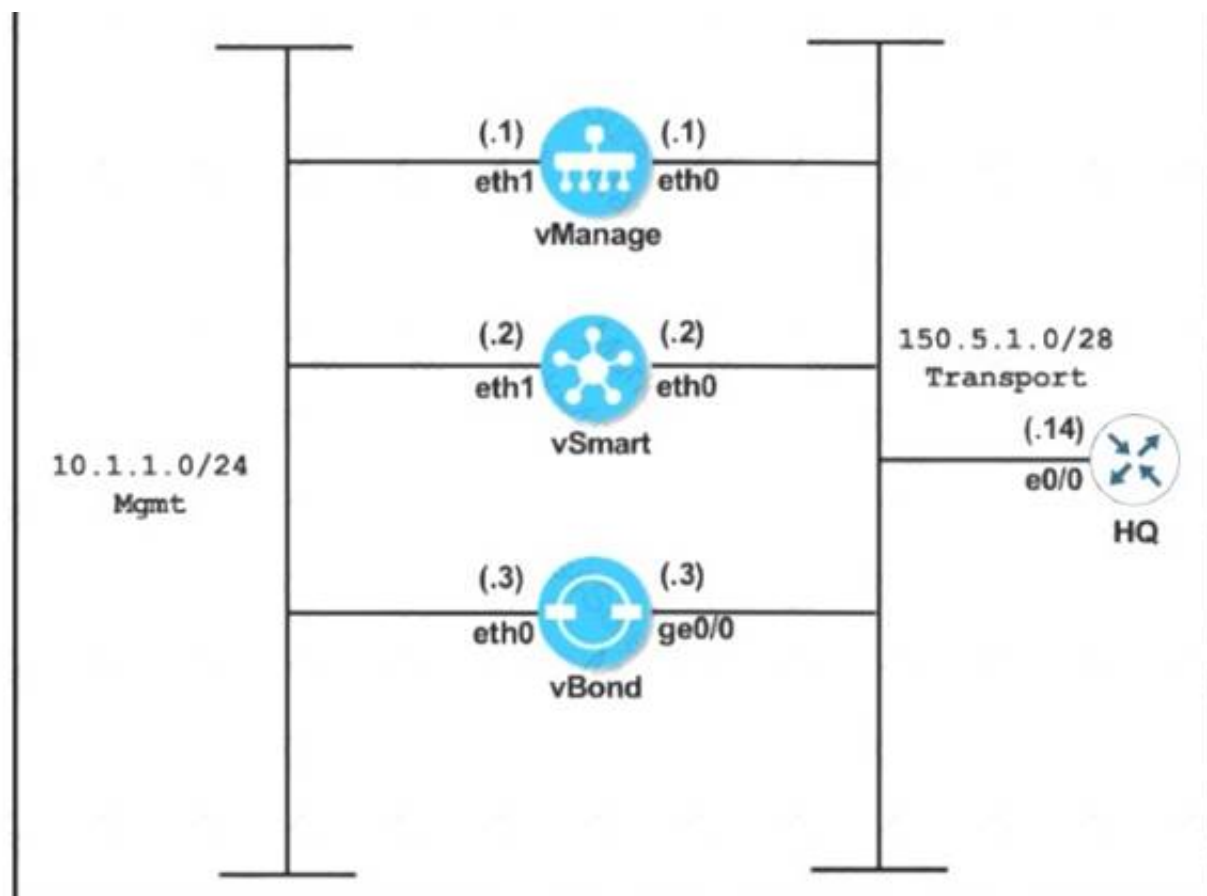
What are two benefits of installing Cisco SD-WAN controllers on cloud-hosted services? (Choose two.)

- A. utilizes well-known cloud services such as Azure
- B. AWS
- C. and GCP
- D. accelerates Cisco SD-WAN deployment
- E. allows integration of the WAN Edge devices in the cloud
- F. installs the controllers in two cloud regions in a primary and backup setup
- G. automatically implements zone-based firewalling on the controllers

Answer: BD

NEW QUESTION 51

Refer to the exhibit.



```
vManage
system
system-ip 10.10.10.101
host-name vManage
site-id 1
clock timezone Europe/London
vbond 150.5.1.3
organization-name Cisco.com
!
vpn 0
interface eth0
ip address 150.5.1.1/28
no shut
tunnel-interface
allow-service all
ip route 0.0.0.0/0 150.5.1.14
!
commit

vSmart
system
system-ip 10.10.10.102
host-name vSmart
site-id 1
clock timezone Europe/London
vbond 150.5.1.3
organization-name Cisco.com
!
vpn 0
interface eth0
ip address 150.5.1.2/28
no shut
tunnel-interface
allow-service all
ip route 0.0.0.0/0 150.5.1.14
!
commit

vBond
system
system-ip 10.10.10.103
host-name vBond
site-id 1
clock timezone Europe/London
vbond 150.5.1.3
organization-name Cisco.com
!
vpn 0
interface ge0/0
ip address 150.5.1.3/28
no shut
tunnel-interface
encapsulation ipsec
allow-service all
ip route 0.0.0.0/0 150.5.1.14
!
commit
```

An engineer is troubleshooting an issue where vManage and vSmart have a problem establishing a connection to vBond. Which action fixes the issue?

- A. Reconfigure the vBond command on the vBond as vBond 150.5.1.3 local
- B. Configure the tunnel interface on all three controllers with a color of transport
- C. Remove the encapsulation IPsec command under the tunnel interface of vBond.
- D. Configure encapsulation as IPsec under the tunnel interface of vManage and vSmart

Answer: A

Explanation:

Configure the IP address of Cisco vBond Orchestrator. Cisco vBond Orchestrator's IP address must be a public IP address, to allow all Cisco vEdge devices in the overlay network to reach Cisco vBond Orchestrator:

```
vBond(config-system) #vbond ip-address local
```

In Releases 16.3 and later, the address can be an IPv4 or an IPv6 address. In earlier releases, it must be an IPv4 address. A vBond orchestrator is effectively a vEdge router that performs only the orchestrator functions. The local option designates the device to be Cisco vBond Orchestrator, not a vEdge router. Cisco vBond Orchestrator must run on a standalone virtual machine (VM) or hardware router; it cannot coexist in the same device as a software or hardware vEdge router.

NEW QUESTION 53

Which two virtualized environments are available for a company to install the controllers using the on-premises model? (Choose two)

- A. VMware vSphere ESXi
- B. VMware Workstation
- C. kernel-based virtual machine

- D. OpenStack
- E. Microsoft Hyper-V

Answer: AD

NEW QUESTION 54

An engineer configures an application-aware routing policy for a group of sites. The locations depend on public and private transports. The policy does not work as expected when one of the transports does not perform properly. This policy is configured:

```

policy
sla-class BULK_DATA
  loss 20
  latency 300
  jitter 100
!
sla-class TRANSACTIONAL_DATA
  loss 15
  latency 50
  jitter 100
!
sla-class REALTIME
  loss 20
  latency 100
  jitter 30
!
app-route-policy VPN-10_MPLS_AND_INET_SITES
vpn-list VPN-10
sequence 1
  match
    dscp 46
  !
  action
    backup-sla-preferred-color biz-internet
    sla-class REALTIME preferred-color private1
  !
!
sequence 11
  match
    dscp 34
  !
  action
    backup-sla-preferred-color biz-internet
    sla-class TRANSACTIONAL_DATA preferred-color private1
  !
!

```

which configuration completes the policy so that it works for all locations?

A)

```

sla-class TRANSACTIONAL_DATA
  loss 5
  latency 50
  jitter 100
!
sla-class REALTIME
  loss 2
  latency 100
  jitter 30
!

```

B)

```

sla-class TRANSACTIONAL_DATA
  loss 2
  latency 100
  jitter 30
!
sla-class REALTIME
  loss 15
  latency 100
  jitter 100
!

```

C)

```

sla-class BULK_DATA
  loss 10
  latency 300
  jitter 100
!
sla-class REALTIME
  loss 2
  latency 100
  jitter 30
!

```

D)

```
sla-class BULK_DATA
loss 15
latency 100
jitter 100
!
sla-class TRANSACTIONAL_DATA
loss 10
latency 300
jitter 100
!
```

- A. Option A
- B. Option B
- C. Option C
- D. Option D

Answer: A

NEW QUESTION 55

Drag and drop the devices from the left into order on the right to upgrade the software from version 19 to version 20.

WAN Edge	1
vBond	2
vManage	3
vSmart	4

- A. Mastered
- B. Not Mastered

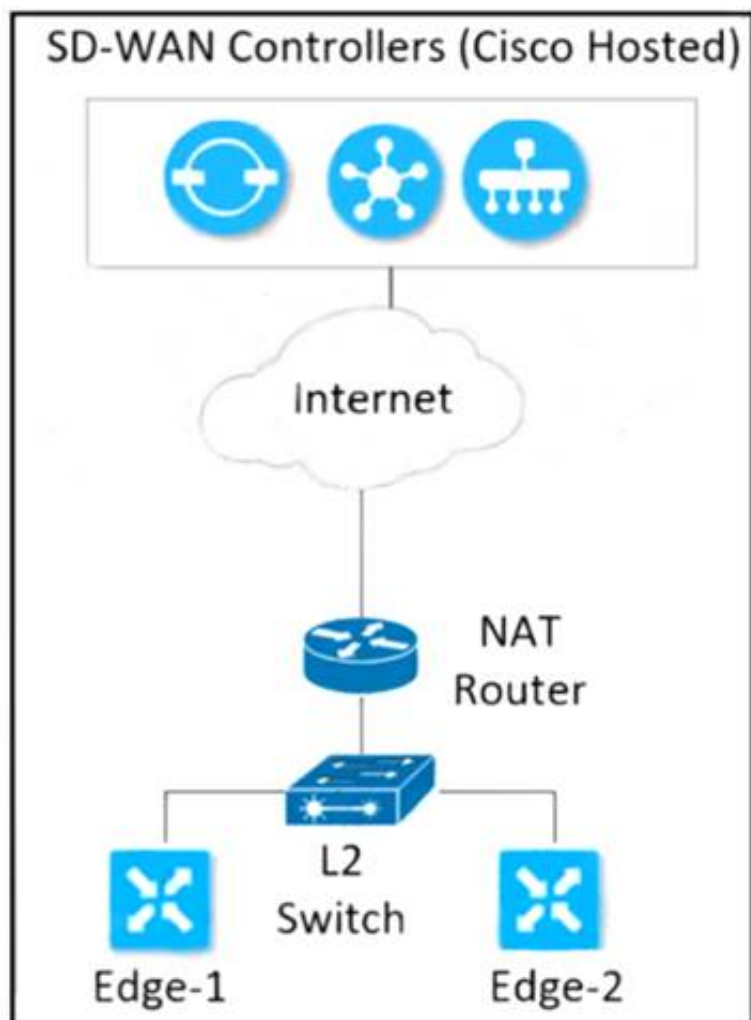
Answer: A

Explanation:

WAN Edge	vManage	1
vBond	vBond	2
vManage	vSmart	3
vSmart	WAN Edge	4

NEW QUESTION 60

Refer to the exhibit



Which configuration must the engineer use to form underlay connectivity for the Cisco SD-WAN network?

A)

```

R1
vpn 512
interface eth0
ip address 10.0.0.21/24
no shutdown
!
ip route 0.0.0.0/0 10.0.0.254
  
```

```

R2
vpn 512
interface eth0
ip address 10.0.0.2/24
no shutdown
!
ip route 0.0.0.0/0 10.0.0.254
  
```

B)

```

R1
vpn 10
interface ge0/2
ip address 10.10.10.9/29
no shutdown
!
ip route 0.0.0.0/0 10.10.10.11
  
```

```

R2
vpn 10
interface ge0/2
ip address 10.10.10.10/29
no shutdown
!
ip route 0.0.0.0/0 10.10.10.11
  
```

C)

```

R1
vpn 0
interface 10ge0/0
ip address 10.50.0.2/29
no shutdown
!
ip route 0.0.0.0/0 10.50.0.3
  
```

```

R2
vpn 0
interface 10ge0/0
ip address 10.50.0.1/29
no shutdown
!
ip route 0.0.0.0/0 10.50.0.3
  
```

D)


```
R1
vpn 0
interface ge0/0
ip address 10.50.0.2/30
tunnel-interface
!
ip route 0.0.0.0/0 10.50.0.4

R2
vpn 0
interface ge0/0
ip address 10.50.0.3/30
tunnel-interface
!
ip route 0.0.0.0/0 10.50.0.4
```

- A. Option A
- B. Option B
- C. Option C
- D. Option D

Answer: C

NEW QUESTION 65

Which component of the Cisco SD-WAN control plane architecture should be located in a public Internet address space and facilitates NAT-traversal?

- A. vBond
- B. WAN Edge
- C. vSmart
- D. vManage

Answer: A

NEW QUESTION 67

A network administrator configures SNMPv3 on a Cisco WAN Edge router from CLI for monitoring purposes. How many characters are supported by the snmp user <username> command?

- A. from 1 to 8
- B. from 1 to 16
- C. from 1 to 32
- D. from 1 to 48

Answer: C

NEW QUESTION 71

A network engineer must configure all branches to communicate with each other through the Service Chain Firewall located at the headquarters site. Which configuration allows the engineer to accomplish this task?

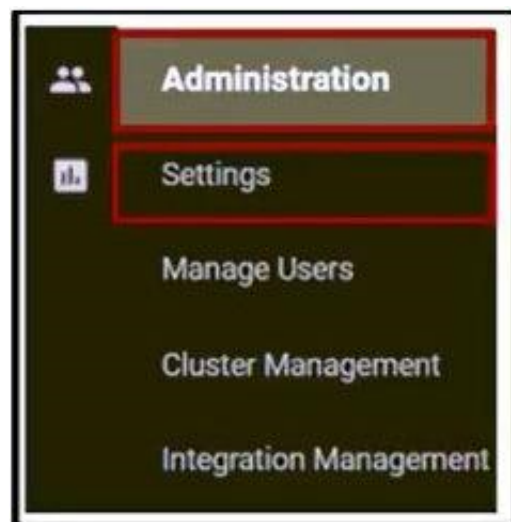
A)



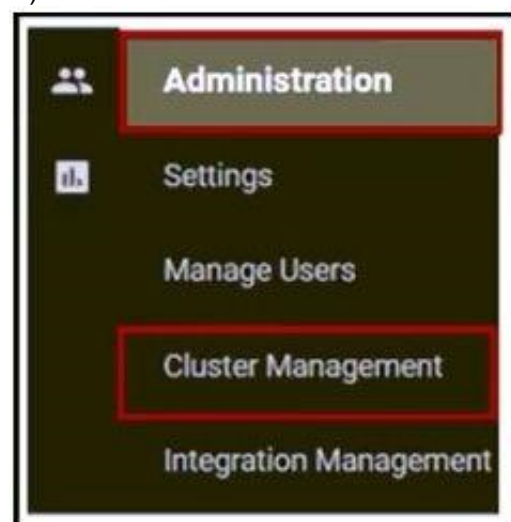
B)



C)



D)



- A. Option A
- B. Option B
- C. Option C
- D. Option D

Answer: B

NEW QUESTION 73

An organization requires the use of integrated preventative engines, exploit protection, and the most updated and advanced signature-based antivirus with sandboxing and threat intelligence to stop malicious attachments before they reach users and get executed. Which Cisco SD-WAN solution meets the requirements?

- A. Cisco Trust Anchor module
- B. URL filtering and Umbrella DNS security
- C. Cisco AMP and Threat Grid
- D. Snort IPS

Answer: D

NEW QUESTION 75

Which pathway under Monitor > Network > Select Device is used to verify service insertion configuration?

- A. System Status
- B. Troubleshooting
- C. Real Time
- D. Events

Answer: B

NEW QUESTION 76

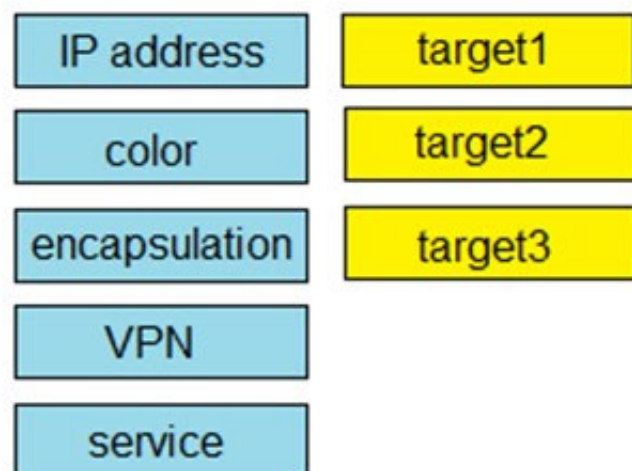
Which routing protocol has the highest default administrative distance?

- A. OMP
- B. external EIGRP
- C. IS-IS
- D. IBGP

Answer: A

NEW QUESTION 77

Drag and drop the attributes from the left that make each transport location unique onto the right. Not all options are used.



- A. Mastered
- B. Not Mastered

Answer: A

Explanation:

A TLOC, or Transport Location, is the attachment point where a WAN Edge router connects to the WAN transport network. A TLOC is uniquely identified and represented by a three-tuple, consisting of system IP address, link color, and encapsulation (Generic Routing Encapsulation [GRE] or IPsec).

NEW QUESTION 79

A network administrator is configuring VRRP to avoid a traffic black hole when the transport side of the network is down on the master device. What must be configured to get the fastest failover to standby?

- A. lower timer interval
- B. prefix-list tracking
- C. higher group ID number
- D. OMP tracking

Answer: B

Explanation:

```
vEdge(config-vrrp)# track-prefix-list list-name
```

If all OMP sessions are lost, VRRP failover occurs as described for the track-omp option. In addition, if reachability to all the prefixes in the list is lost, VRRP failover occurs immediately, without waiting for the OMP hold timer to expire, thus minimizing the amount of overlay traffic is dropped while the vEdge routers determine the VRRP master.

NEW QUESTION 84

Which two metrics must a cloud Edge router use to pick the optimal path for a SaaS application reachable via a gateway site? (Choose two.)

- A. HTTP loss and latency metrics to the SaaS application
- B. ICMP loss and latency metrics to the SaaS application
- C. BFD loss and latency metrics to the gateway site
- D. BFD loss and latency metrics to the SaaS application
- E. HTTP loss and latency metrics to the gateway site

Answer: AC

Explanation:

-The gateway vEdge uses HTTP to obtain SaaS application performance information - The client vEdge will use BFD over the IPsec tunnel to the gateway site to obtain client>gateway path performance information

<https://www.cisco.com/c/dam/en/us/td/docs/solutions/CVD/SDWAN/CVD-SD-WAN-Cloud-onRamp-for-SaaS>

NEW QUESTION 86

An engineer modifies a data policy for DIA in VPN 67. The location has two Internet-bound circuits. Only the web browsing traffic must be admitted for DIA. without further discrimination about which transport to use.

Here is the existing data policy configuration:

```
data-policy DIA
vpn-list VPN-67
sequence 10
match
destination-data-prefix-list INTERNAL-NETWORKS
!
!
default-action drop
```

Which policy configuration sequence meets the requirements?

- ☐ sequence 5


```
match
destination-port 80 443
destination-ip 0.0.0.0/0
!
action accept
nat use-vpn 0
```
- ☐ sequence 20


```
match
destination-port 80 443
source-ip 0.0.0.0/0
!
action accept
set
local-tloc-list
color biz-internet
```
- ☐ sequence 20


```
match
destination-port 80 443
destination-ip 0.0.0.0/0
!
action accept
nat use-vpn 0
```
- ☐ sequence 5


```
match
destination-port 80 443
source-ip 0.0.0.0/0
!
action accept
set
local-tloc-list
color biz-internet
```

- A. Option A
- B. Option B
- C. Option C
- D. Option D

Answer: A

NEW QUESTION 87

What is the default value for the number of paths advertised per prefix in the OMP feature template?

- A. 4
- B. 8
- C. 12
- D. 16

Answer: C

NEW QUESTION 92

A company deploys a Cisco SD-WAN solution but has an unstable Internet connection. When the link to vSmart comes back up, the WAN Edge router routing table is not refreshed, and some traffic to the destination network is dropped. The headquarters is the hub site, and it continuously adds new sites to the SD-WAN network. An engineer must configure route refresh between WAN Edge and vSmart within 2 minutes. Which configuration meets this requirement?

- ☐ omp
no shutdown
graceful-restart
timers
eor-timer 120
- ☐ omp
no shutdown
no graceful-restart
- ☐ omp
no shutdown
graceful-restart
timers
holdtime 120
- ☐ omp
no shutdown
graceful-restart
timers
advertisement-interval 120

- A. Option A
- B. Option B
- C. Option C
- D. Option D

Answer: A

NEW QUESTION 95

Refer to the exhibit



The network team must configure application-aware routing for the Service VPN 50.0.0.0/16

The SLA must prefer MPLS for video traffic but the remaining traffic must use a public network What must be defined other than applications before the application-aware policy is create?

- A. SLA Class, Site VP
- B. Prefix
- C. Data Prefix, Site VPN TLOC
- D. Application, SLA VP
- E. Prefix
- F. Color, SLA Class, Sue, VPN

Answer: A

NEW QUESTION 99

Which device information is required on PNP/ZTP to support the zero-touch onboarding process?

- A. interface IP address
- B. system IP address
- C. public DNS entry
- D. serial and chassis numbers

Answer: D

NEW QUESTION 101

Refer to the exhibit.

PEER TYPE	PEER PROTOCOL	PEER SYSTEM	SITE IP	DOMAIN ID	PEER		PEER		PUBLIC IP	PUBLIC PORT	CONTROLLER		GROUP STATE
					PEER PRIVATE	IP	PRIVATE	PORT			LOCAL	COLOR	
UPTIME	ID												
vbond	dtls	-	0	0	1.3.25.25	12346	1.3.25.25	12346	gold		connect		0
vbond	dtls	-	0	0	1.3.25.25	12346	1.3.25.25	12346	silver		connect		0

An engineer is troubleshooting a control connection Issue. What does "connect" mean in this how control connections output?

- A. Control connection is down
- B. Control connection is connected
- C. Control connection attempt is in progress
- D. Control connection is up

Answer: C

NEW QUESTION 102

What is the behaviour of vBond orchestrator?

- A. It maintains vSmart and WAN Edge routers secure connectivity state
- B. it builds permanent connections with vSmart controllers
- C. it updates vSmart of WAN Edge routers behind NAT devices using OMP.
- D. It builds permanent connections with WAN Edge routers

Answer: A

NEW QUESTION 106

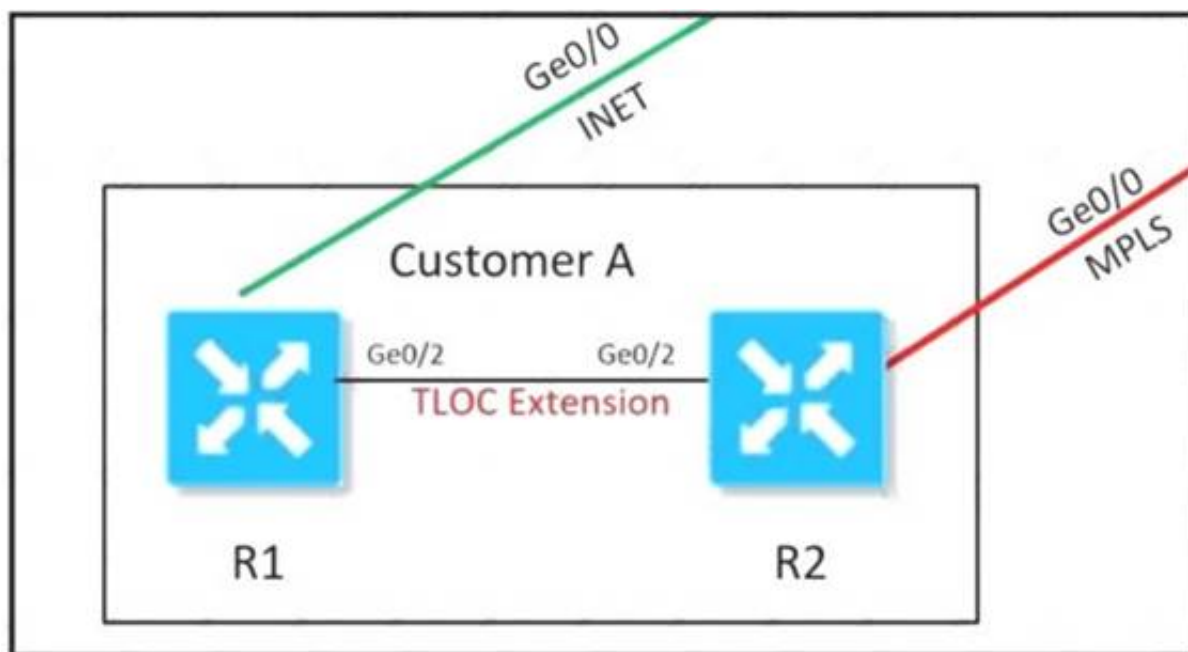
Which combination of platforms are managed by vManage?

- A. ISR4321, ASR1001, ENCS, ISRv
- B. ISR4351, ASR1002HX, vEdge2000, vEdge Cloud
- C. ISR4321, ASR1001, Nexus, ENCS
- D. ISR435I, ASR1009, vEdge2000, CSR1000v

Answer: A

NEW QUESTION 107

Refer to the exhibit.



An MPLS connection on R2 must extend to R1 Users behind R1 must have dual connectivity for data traffic Which configuration provides R1 control connectivity over the MPLS connection?

A)

```
R1
interface ge0/2
ip address 34.34.34.1/30
tloc-extension ge0/1
tunnel-interface
color mpls
```

```
R2
interface ge0/2
ip address 34.34.34.2/30
tloc-extension ge0/0
tunnel-interface
color public-internet
```

B)

```
R1
interface ge0/2
ip address 34.34.34.1/30
tloc-extension ge0/1
```

```
R2
interface ge0/0
ip address 34.34.34.2/30
tunnel-interface
color mpls
```

C)

```
vpn 0
router
ospf
 redistribute omp route-policy OSPF_Route_Policy
 area 0
 interface ge0/2
 exit
lists
 prefix-list W2_Loopback
 ip-prefix 10.10.10.5/32
!
 route-policy OSPF_Route_Policy
 sequence 1
 match
 address W2_Loopback
!
 action accept
 set
 metric 100
 metric-type type2
```

D)

```
vpn 10
name "" Service VPN 10 ""
router
ospf
 redistribute omp route-policy OSPF_Route_Policy
 area 0
 interface ge0/2
 exit
lists
 prefix-list W2_Loopback
 ip-prefix 10.10.10.5/32
!
 route-policy OSPF_Route_Policy
 sequence 1
 match
 address W2_Loopback
!
 action accept
```

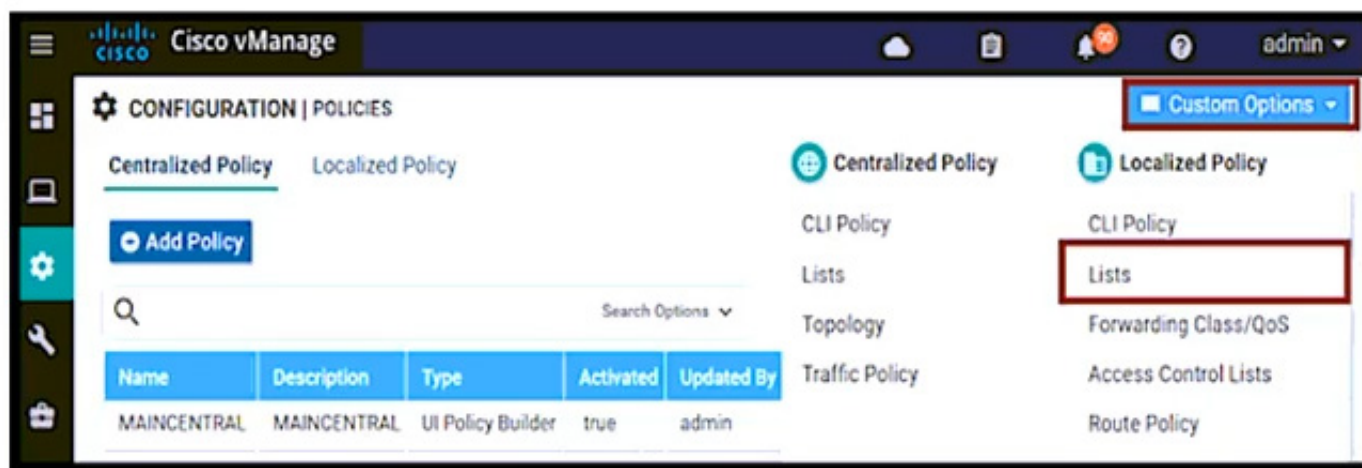
- A. Option A
- B. Option B
- C. Option C
- D. Option D

Answer: D

NEW QUESTION 112

Which configuration defines the groups of interest before creation of the access list or route map?

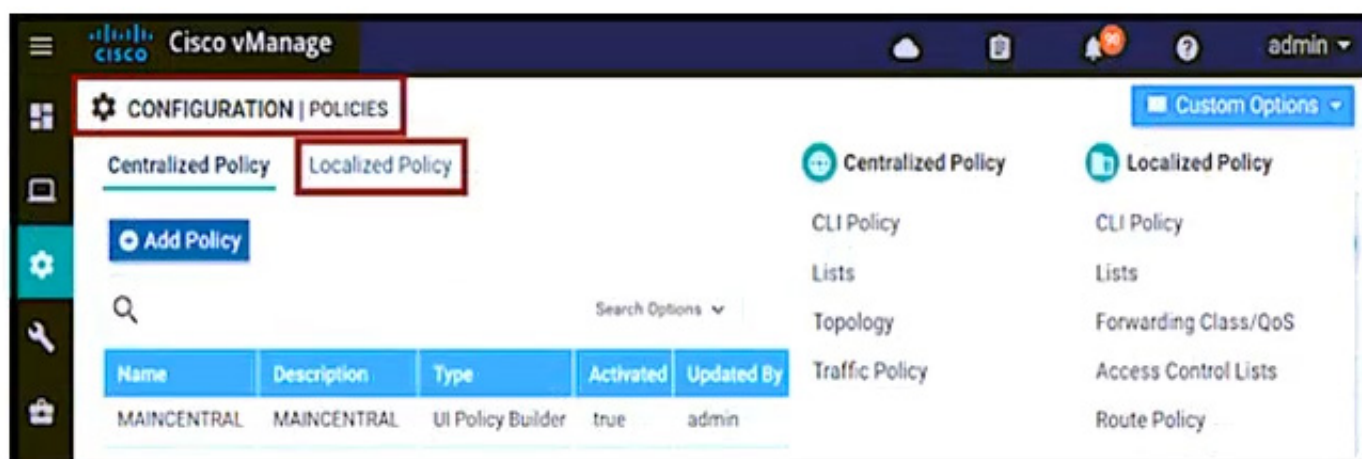
A)



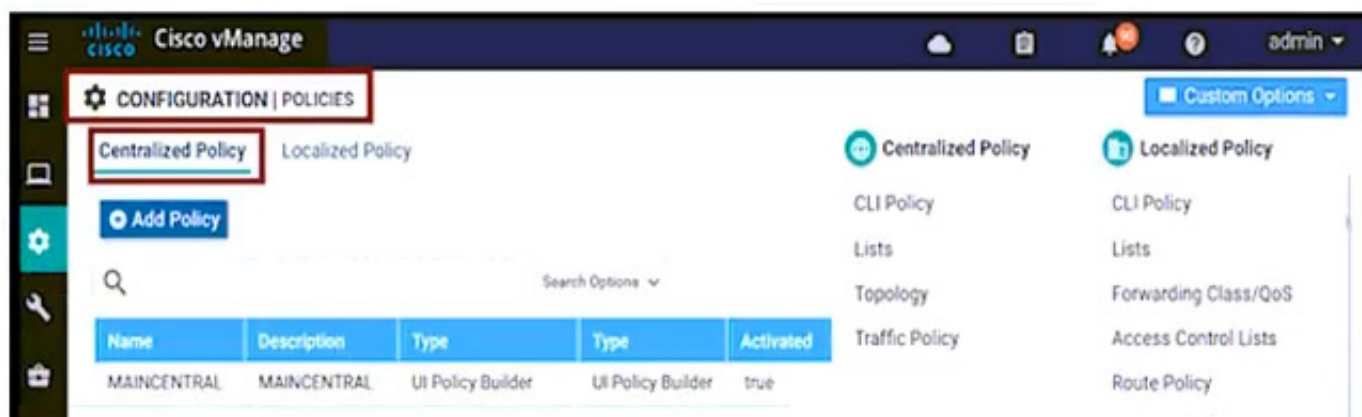
B)



C)



D.



- A. Option A
- B. Option B
- C. Option C
- D. Option D

Answer: A

NEW QUESTION 117

A bank is looking for improved customer experience for applications and reduce overhead related to compliance and security. Which key feature or features of the Cisco SD-WAN solution will help the bank to achieve their goals?

- A. Integration with PaaS providers to offer the best possible application experience
- B. QoS including application prioritization and meeting critical applications SLA for selecting optimal path.
- C. implementation of a modern age core banking system
- D. implementation of BGP across the enterprise routing for selecting optimal path

Answer: B

Explanation:

https://www.cisco.com/c/dam/en/us/solutions/collateral/enterprise-networks/sd-wan/nb-06-cisco-sd-wan-ebook-

NEW QUESTION 122

Refer to the exhibit.

LOCAL		PEER	PEER	PEER	SITE		DOMAIN PEER		PEER	PEER
INSTANCE	TYPE	REMOTE	PROTOCOL	SYSTEM	IP	ID	ID	PRIVATE	PRIVATE	PUBLIC
REMOTE	COLOR	STATE	STATE	IP	ERROR	ERROR	COUNT	IP	PORT	PORT
0		vsmart	tls	1.1.1.3		100	1	100.1.1.3	23456	100.1.1.3
default			trying		DCONFAIL	NOERR	10001	2020-01-01T10:01:20+0000		23456

The control connection is failing. Which action resolves the issue?

- A. import vSmart in vManager
- B. Validate the certificates authenticity on vSmart
- C. Upload the WAN Edge list on vManage.
- D. Restore the reachability to the vSmart

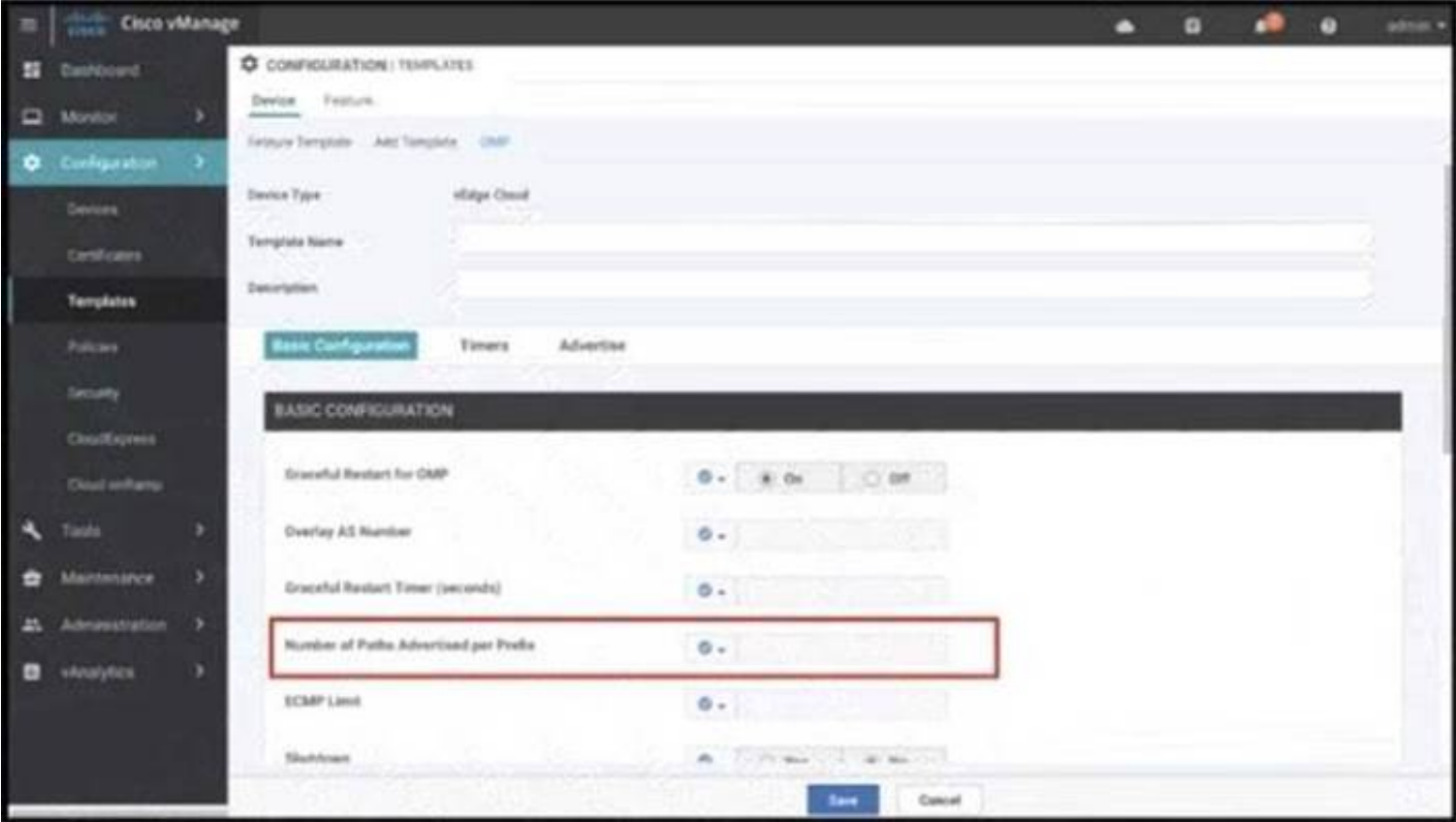
Answer: D

Explanation:

https://www.cisco.com/c/en/us/support/docs/routers/sd-wan/214509-troubleshoot-control-connections.html

NEW QUESTION 127

Refer to the exhibit.



A network administrator is configuring OMP in vManage to advertise all the paths for the same prefix from a site that has two WAN Edge devices Each WAN Edge device is connected to three ISPs and two private MPLS transports. What is the minimum value for 'Number of Paths advertised per Prefix" that should be configured?

- A. 2
- B. 3
- C. 5
- D. 10

Answer: D

NEW QUESTION 129

Which protocol is used between redundant vSmart controllers to establish a permanent communication channel?

- A. IPsec
- B. HTTPs
- C. DTLS
- D. SSL

Answer: C

NEW QUESTION 130

Refer to exhibit.

PEER	PEER	PEER	PEER	SITE	DOMAIN								
INSTANCE	TYPE	PRIVATE	PEER		PUBLIC				LOCAL	REMOTE	REPEAT	REMOTE	
COLOR	STATE	PROTOCOL	SYSTEM IP	ERROR	ID	ID	PRIVATE IP	PORT	PUBLIC IP	PORT	PORT	PORT	
0	wood	819	0.0.0.0		0	0	192.168.0.231	12345	192.168.0.231	12345	default	12345	
0	down	CTRLFREQ	NOTES	9	2019-04-01T19:04:32+0200								

An engineer is troubleshooting tear down of control connections even though a valid Certificate Serial Number is entered Which two actions resolve the Issue? (Choose two)

- A. Enter a valid serial number on the controllers for a given device
- B. Remove the duplicate IP in the network.
- C. Enter a valid product ID (model) on the PNP portal
- D. Match the serial number file between the controllers
- E. Restore network reachability for the controller

Answer: CD

Explanation:

<https://community.cisco.com/t5/networking-documents/sd-wan-routers-troubleshoot-control-connections/ta-p/38>

NEW QUESTION 134

What is a default protocol for control plane connection?

- A. IPsec
- B. HTTPS
- C. TLS
- D. DTLS

Answer: D

NEW QUESTION 136

How many vCPUs and how much RAM are recommended to run the vSmart controller on the KVM server for 251 to 1000 devices in software version 20.4.x?

- A. 4vCPU
- B. 16 GB
- C. 4 vCPU
- D. 8 GB
- E. 8vCPU
- F. 16 GB
- G. 2vCPUs.4GB

Answer: B

NEW QUESTION 139

Which controller is excluded from the process of checking against the authorized, allowed list?

- A. vBond
- B. PnP
- C. vSmart
- D. vManage

Answer: A

NEW QUESTION 143

Which two actions are necessary to set the Controller Certificate Authorization mode to indicate a root certificate? (Choose two)

- A. Select the Controller Certificate Authorization mode that is recommended by Cisco
- B. Change the organization name of the Cisco SD-WAN fabric.
- C. Upload an SSL certificate to vManage,
- D. Select a private certificate signing authority instead of a public certificate signing authority
- E. Select a validity period from the drop-down menu

Answer: CD

NEW QUESTION 147

How is an event monitored and reported for an individual device in the overlay network at site ID:S4300T6E43F36?

- A. The device sends event notifications to vManage.
- B. The device sends notifications to vSmart that sends them to vManage.
- C. The device sends a critical alarm of events to vManage.
- D. The device sends a critical alarm to vSmart that sends it to vManage.

Answer: A

NEW QUESTION 151

Which device in the SD- WAN solution receives and categorizes event reports, and generates alarms?

- A. WAN Edge routers
- B. vSmart controllers
- C. vManage NMS
- D. vBond controllers

Answer: C

Explanation:

https://sdwan-docs.cisco.com/Product_Documentation/vManage_Help/Release_17.1/vManage_NMS_Product_

NEW QUESTION 155

An engineer must apply the configuration for certificate installation to vBond Orchestrator and vSmart Controller. Which configuration accomplishes this task?

- A.

```
vpn 0
interface eth1
ip address 199.1.1.1/28
tunnel-interface
allow-service sshd
allow-service netconf
no shutdown
```
- B.

```
vpn 512
interface eth1
ip address 199.1.1.1/28
tunnel-interface
allow-service sshd
allow-service netconf
```
- C.

```
vpn 0
interface eth1
ip address 199.1.1.1/28
tunnel-interface
allow-service sshd
allow-service ntp
```
- D.

```
vpn 512
interface eth1
ip address 199.1.1.1/28
tunnel-interface
allow-service netconf
no allow-service ntp
no allow-service stun
```

- A. Option A
- B. Option B
- C. Option C
- D. Option D

Answer: A

NEW QUESTION 159

A company must avoid downtime at the remote sites and data plane to continue forwarding traffic between WAN Edge devices if the branch router loses connectivity to its OMP peers Which configuration meets the requirement?

A)

The screenshot shows the vManage configuration page for OMP. The 'Basic Configuration' tab is selected. The 'Graceful Restart for OMP' feature is set to 'Off'. The 'Overlay AS Number' is set to 2. The 'Graceful Restart Timer (seconds)' is set to 300. The 'Number of Paths Advertised per Prefix' is set to 2. The 'ECMP Limit' is set to 2. The 'Shutdown' feature is set to 'No'.

B)

Feature Template Add Template OMP

Basic Configuration Timers Advertise

Graceful Restart for OMP ☐ On ☒ Off

Overlay AS Number

Graceful Restart Timer (seconds)

Number of Paths Advertised per Prefix

ECMP Limit

Shutdown ☐ Yes ☒ No

C)

CONFIGURATION | TEMPLATES

Device Feature

Feature Template Add Template OMP

Basic Configuration Timers Advertise

Graceful Restart for OMP ☐ On ☒ Off

Overlay AS Number

Graceful Restart Timer (seconds)

Number of Paths Advertised per Prefix

ECMP Limit

Shutdown ☒ Yes ☐ No

D)

CONFIGURATION | TEMPLATES

Device Feature

Feature Template Add Template OMP

Basic Configuration Timers Advertise

Graceful Restart for OMP ☐ On ☒ Off

Overlay AS Number

Graceful Restart Timer (seconds)

Number of Paths Advertised per Prefix

ECMP Limit

Shutdown ☐ Yes ☒ No

- A. Option A
- B. Option B
- C. Option C
- D. Option D

Answer: D

NEW QUESTION 160

An engineer is troubleshooting a vEdge router and identifies a “DCONFALL – DTLS connection failure” message. What is the problem?

- A. certificate mismatch
- B. organization mismatch
- C. memory issue
- D. connectivity issue

Answer: D

Explanation:

<https://community.cisco.com/t5/networking-documents/sd-wan-routers-troubleshoot-control-connections/ta-p/38>

NEW QUESTION 161

Which logs verify when a device was upgraded?

- A. Audit
- B. Email
- C. ACL
- D. SNMP

Answer: A

NEW QUESTION 162

An engineer is configuring a data policy for packets that must be captured through the policy. Which command accomplishes this task?

- A. policy > data-policy > vpn-list > sequence > default-action > drop
- B. policy > data-policy > vpn-list > sequence > action
- C. policy > data-policy > vpn-list > sequence > default-action > accept
- D. policy > data-policy > vpn-list > sequence > match

Answer: B

Explanation:

<https://www.cisco.com/c/dam/en/us/td/docs/routers/sdwan/configuration/config-18-4.pdf#page=357>

NEW QUESTION 165

An engineer must automate certificate signing through Cisco. Which vManage configuration achieves this task?

A)

```
vpn 0
  dns 208.67.222.222 primary
  allow-service dns
  allow-service sshd
  allow-service netconf
```

B)

```
vpn 0
  allow-service dns
  allow-service sshd
  allow-service netconf
```

C)

```
vpn 512
  dns 208.67.222.222 primary
  allow-service dns
  allow-service sshd
  allow-service netconf
```

D)

```
vpn 512
  allow-service dns
  allow-service sshd
  allow-service netconf
```

- A. Option A
- B. Option B
- C. Option C
- D. Option D

Answer: A

NEW QUESTION 167

A customer has MPLS and Internet as the TLOC colors An engineer must configure conrolJlers with the Internet and not with MPLS Which configuration achieves

this requirement on vManage?

A)

```
vpn 0
interface eth1
ip address 10.50.0.1/24
tunnel-interface
color mpls
```

B)

```
vpn 0
interface eth1
ip address 10.50.0.1/24
tunnel-interface
color public-internet
```

C)

```
vpn 0
interface eth1
ip address 10.50.0.1/24
tunnel-interface
color biz-internet
```

D)

```
vpn 0
interface eth1
ip address 10.50.0.1/24
tunnel-interface
color default
```

A. Option A

B. Option B

C. Option C

D. Option D

Answer: B

NEW QUESTION 170

Which two algorithms authenticate a user when configuring SNMPv3 monitoring on a WAN Edge router? (Choose two.)

A. AES-256

B. SHA-1

C. AES-128

D. MD5

E. SHA-2

Answer: AB

Explanation:

Configure SNMPv3

Table 7. Feature History

Feature Name	Release Information	Description
Support for SNMPv3 AES-256 bit Authentication Protocol	Cisco SD-WAN Release 20.5.1	Support introduced for AES-256 bit Authentication Protocol called SHA-256.

To configure SNMPv3, in SNMP Version, click **V3**. For SNMPv3, you can configure groups, users, and trap information. Configure groups and trap information as described above.

To configure SNMPv3 users, in the User section, click **Add New User** and enter the following parameters:

Table 8.

Parameter Name	Description
User	Enter a name of the SNMP user. It can be 1 to 32 alphanumeric characters.
Authentication Protocol	Select the authentication mechanism for the user: <ul style="list-style-type: none">SHA-1 message digestSHA-256 message digest <p>Note Starting from Cisco SD-WAN Release 20.5.1, SHA-256 authentication protocol was introduced. When you choose SHA-256 as the authentication protocol, you must set the security level as authPriv.</p> <p>Note MD5 authentication protocol is deprecated for Cisco SD-WAN Release 20.3.2 and later releases.</p>

<https://www.cisco.com/c/en/us/td/docs/routers/sdwan/configuration/snmp/snmp-book.html>

NEW QUESTION 174

How is TLOC defined?

A. It is represented by a unique identifier to specify a site in as SD-WAN architecture.

B. It specifies a Cisco SD-WAN overlay in a multitenant vSMART deployment.

C. It is a unique collection of GRE or IPsec encapsulation, link color, and system IP address.

D. It is represented by group of QoS policies applied to a WAN Edge router.

Answer: C

NEW QUESTION 179

A customer is receiving routes via OMP from vSmart controller for a specific VPN. The customer must provide access to the W2 loopback received via OMP to the OSPF neighbor on the service-side VPN, which configuration fulfills these requirements?

- ☒ vpn 0


```
router
  ospf
    redistribute omp route-policy OSPF_Route_Policy
  area 0
    interface ge0/2
    exit
  lists
    prefix-list W2_Loopback
    ip-prefix 10.10.10.5/24
    !
  route-policy OSPF_Route_Policy
  sequence 1
    match
      address W2_Loopback
    !
  default action accept
  set
    metric 100
    metric-type type1
```
- ☐ vpn 0


```
router
  ospf
    redistribute omp route-policy OSPF_Route_Policy
  area 0
    interface ge0/2
    exit
  lists
    prefix-list W2_Loopback
    ip-prefix 10.10.10.5/32
    !
  route-policy OSPF_Route_Policy
  sequence 1
    match
      address W2_Loopback
    !
  default action accept
  set
    metric 100
    metric-type type1
```
- ☐ vpn 0


```
router
  ospf
    redistribute omp route-policy OSPF_Route_Policy
  area 0
    interface ge0/2
    exit
  lists
    prefix-list W2_Loopback
    ip-prefix 10.10.10.5/32
    !
  route-policy OSPF_Route_Policy
  sequence 1
    match
      address W2_Loopback
    !
  action accept
  set
    metric 100
    metric-type type2
```
- ☐ vpn 10


```
name "" Service VPN 10 ""
router
  ospf
    redistribute omp route-policy OSPF_Route_Policy
  area 0
    interface ge0/2
    exit
  lists
    prefix-list W2_Loopback
    ip-prefix 10.10.10.5/32
    !
  route-policy OSPF_Route_Policy
  sequence 1
    match
      address W2_Loopback
    !
  action accept
  set
    metric 100
    metric-type type1
```

- A. Option A
- B. Option B
- C. Option C
- D. Option D
- E. Option E

Answer: D

Explanation:

Answer must start with VPN 10(service side) & should have metric-type 1 and not with VPN 0 (transport side)

NEW QUESTION 183

Which command on a WAN Edge device displays the information about the colors present in the fabric that are learned from vSmart via OMP?

- A. show omp tlocs
- B. show omp sessions
- C. show omp peers
- D. show omp route

Answer: A

NEW QUESTION 188

An administrator is configuring the severity level on the vManage NMS for events that indicate that an action must be taken immediately. Which severity level must be configured?

- A. warning
- B. error
- C. critical
- D. alert

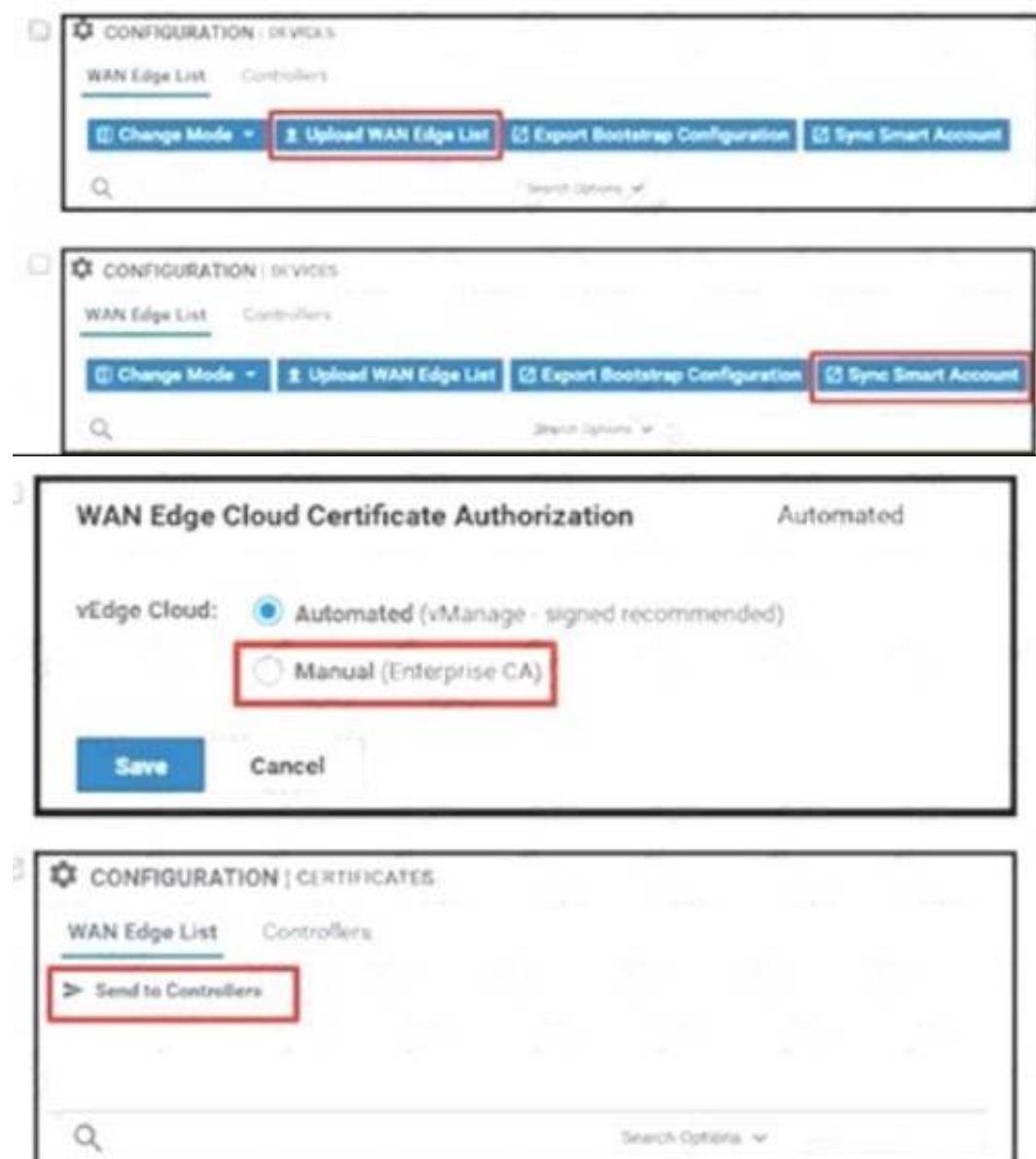
Answer: D

Explanation:

- **Alert**— Action must be **taken immediately** (corresponds to syslog severity 1).

NEW QUESTION 189

An administrator must deploy the controllers using the On-Prem method while vManage can access the PnP portal from inside How are the two WAN Edge authorized allowed lists to be made available to vManage? (Choose two)



- A. Option A
- B. Option B
- C. Option C
- D. Option D

Answer: AB

Explanation:

https://sdwan-docs.cisco.com/Product_Documentation/vManage_Help/Release_18.4/Configuration/Devices

NEW QUESTION 191

Which VPN connects the transport-side WAN Edge interface to the underlay/WAN network?

- A. VPN 1
- B. VPN 511
- C. VPN 0
- D. VPN 512

Answer: C

Explanation:

transport network and the transport network itself. The network ports that connect to the underlay network are part of VPN 0, the transport VPN. Getting connectivity to the Service Provider gateway in the transport network usually involves configuring a static default gateway (most

NEW QUESTION 196

What is the main purpose of using TLOC extensions in WAN Edge router configuration?

- A. creates hardware-level transport redundancy at the local site
- B. creates an IPsec tunnel from WAN Edge to vBond Orchestrator
- C. transports control traffic to a redundant vSmart Controller
- D. transports control traffic w remote-site WAN Edge routers

Answer: D

NEW QUESTION 201

What is an attribute of TLOC'?

- A. encryption
- B. local preference
- C. tag
- D. service

Answer: C

NEW QUESTION 203

Refer to the exhibit.

```
vEdge-Cloud#
vEdge-Cloud#
vEdge-Cloud# vshell
vEdge-Cloud:~$ cd /var/log/
vEdge-Cloud:/var/log$
vEdge-Cloud:/var/log$ ls -l
total 28992
-rw-r--r-- 1 root root 1441700 Nov 22 15:13 auth.log
-rw-r--r-- 1 basic adm 0 Aug 7 15:29 cloud-init.log
drwxr-xr-x 2 root root 4096 Nov 22 14:49 confd
-rw-r--r-- 1 root root 1896486 Nov 22 14:57 kern.log
-rw-r--r-- 1 root root 292292 Aug 9 22:31 lastlog
-rw-r--r-- 1 root root 6197843 Nov 22 15:14 messages
-rw-r--r-- 1 root root 10512141 Aug 30 21:00 messages.1
drwxr-xr-x 2 root root 4096 Nov 22 14:48 pdb
drwxr-xr-x 2 quagga quagga 4096 Aug 7 15:29 quagga
-rw-r--r-- 1 root root 437 Nov 22 14:48 sw_script_active.log
-rw-r--r-- 1 root root 382 Nov 22 14:48 sw_script_previous.log
-rw-r--r-- 1 root root 2004 Nov 22 14:49 sw_script_synccdb.log
-rw----- 1 root root 64064 Nov 22 15:07 tallylog
drwxr-xr-x 2 root root 60 Nov 22 14:48 tmplog
-rw-r--r-- 1 root root 6841506 Nov 22 15:14 vconfd
-rw-r--r-- 1 root root 184602 Aug 7 15:29 vdebug
-rw-r--r-- 1 root root 2479511 Nov 22 15:14 vsyslog
-rwxr-xr-x 1 root utmp 49536 Nov 22 15:07 wtmp
vEdge-Cloud:/var/log$
vEdge-Cloud:/var/log$
```

Which configuration stops Netconf CLI logging on WAN Edge devices during migration?

- ☐ logs
 - audit-disable
 - netconf-disable
- ☐ logs
 - netconf-disable
- ☐ logging
 - disk netconf-disable
- ☒ logging
 - disk
 - audit-disable
 - netconf-disable

- A. Option A
- B. Option B
- C. Option C
- D. Option D

Answer: B

Explanation:

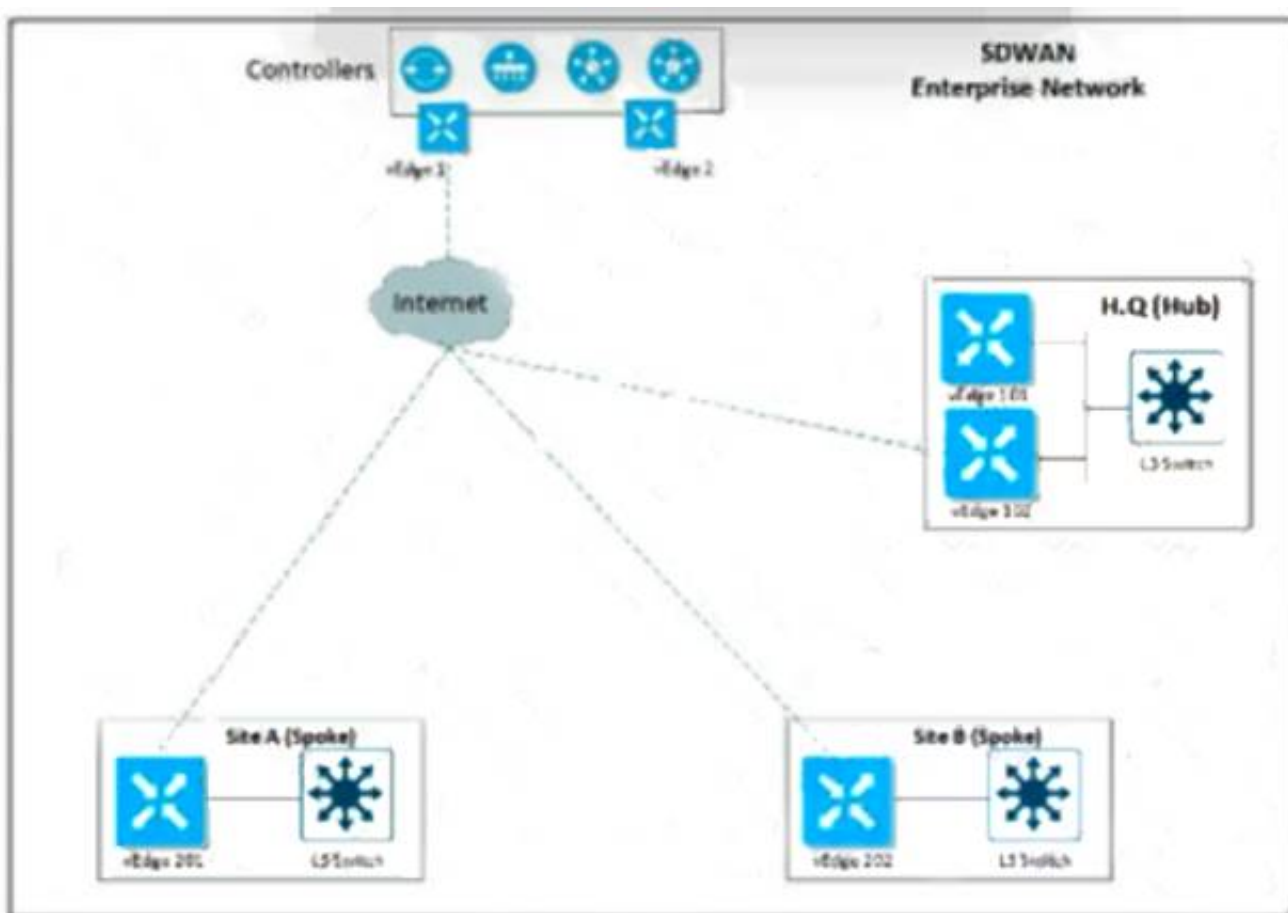
<https://www.cisco.com/c/en/us/td/docs/routers/sdwan/command/sdwan-cr-book/config-cmd.html#wp386725031>

Syslog messages related to AAA authentication and Netconf CLI access and usage are placed in the auth.log and messages files. Each time Cisco vManage logs in to a Cisco vEdge device to retrieve statistics and status information and to push files to the router, the router generates AAA and Netconf log messages. So, over time, these messages can fill the log files. To prevent these messages from filling the log files, you can disable the logging of AAA and Netconf syslog messages:

Device(config)# **system aaa logs**Viptela(config-logs)# **audit-disable**Viptela(config-logs)# **netconf-disable**

NEW QUESTION 208

Refer to the exhibit



An engineer must configure a QoS policy between the hub and site A (spoke) over a standard internet circuit where traffic shaping is adjusted automatically based on available bandwidth. Which configuration meets the requirement?

- ☐ Hub
sdwan
interface GigabitEthernet1
qos-adaptive
period 90
downstream 8000
downstream range 6000 10000
upstream 8000
upstream range 4000 16000
exit
tunnel-interface
encapsulation ipsec weight 1
color public-internet
no last-resort-circuit
vmanage-connection-preference 5
allow-service all
- ☐ Site A (Spoke)
sdwan
interface GigabitEthernet1
qos-adaptive
period 40
downstream 10000
downstream range 8000 12000
upstream 9000
upstream range 5000 16000
exit
tunnel-interface
encapsulation ipsec weight 1
color mpls
no last-resort-circuit
vmanage-connection-preference 5
allow-service all



- A. Option A
- B. Option B
- C. Option C
- D. Option D

Answer: D

NEW QUESTION 210

Which value is verified in the certificates to confirm the identity of the physical WAN Edge device?

- A. Serial Number
- B. OTP
- C. System-IP
- D. Chassis-ID

Answer: A

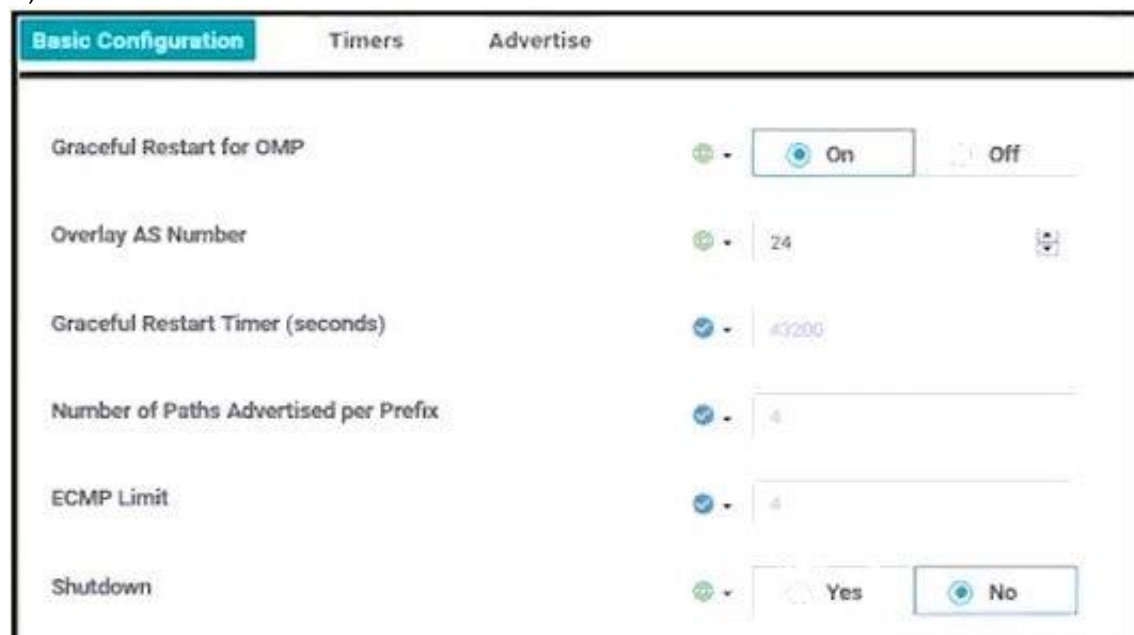
Explanation:

<https://www.cisco.com/c/en/us/td/docs/routers/sdwan/configuration/sdwan-xe-gs-book/manage-certificates.html>

NEW QUESTION 211

An enterprise is continuously adding new sites to its Cisco SD-WAN network. It must configure any cached routes flushed when OMP peers have lost adjacency. Which configuration allows the cached OMP routes to be flushed after every 24 hours from its routing table?

A)



B)

Basic Configuration Timers Advertise

Graceful Restart for OMP ☒ On ☐ Off

Overlay AS Number

Graceful Restart Timer (seconds)

Number of Paths Advertised per Prefix

ECMP Limit

Shutdown ☐ Yes ☒ No

C)

Basic Configuration Timers Advertise

Graceful Restart for OMP ☒ On ☐ Off

Overlay AS Number

Graceful Restart Timer (seconds)

Number of Paths Advertised per Prefix

ECMP Limit

Shutdown ☐ Yes ☒ No

D)

Basic Configuration Timers Advertise

Graceful Restart for OMP ☒ On ☐ Off

Overlay AS Number

Graceful Restart Timer (seconds)

Number of Paths Advertised per Prefix

ECMP Limit

Shutdown ☐ Yes ☒ No

- A. Option A
- B. Option B
- C. Option C
- D. Option D

Answer: B

NEW QUESTION 212

Which vBond system configuration under VPN 0 allows for a routable public IP address even if the DNS name, hostname, or IP address of the vBond orchestrator are omitted?

- A. local
- B. vbond-only
- C. dns-name
- D. WAN

Answer: A

NEW QUESTION 216

Which command disables the logging of syslog messages to the local disk?

- A. no system logging disk enable
- B. no system logging disk local

- C. system logging disk disable
- D. system logging server remote

Answer: A

NEW QUESTION 221

An enterprise deployed a Cisco SD-WAN solution with hub-and-spoke topology using MPLS as the preferred network over the Internet. A network engineer must implement an application-aware routing policy to allow ICMP traffic to be load-balanced over both the available links. Which configuration meets the requirement?
A)

```
app-route-policy _VPN_10_AAR
vpn-list VPN_50
sequence 21
match
app-list ICMP
source-ip 0.0.0.0/0
!
action
sla-class ICMP_SLA preferred-color public-internet
sla-class ICMP_SLA preferred-color mpls
```

B)

```
app-route-policy _VPN_10_AAR
vpn-list VPN_50
sequence 21
match
app-list ICMP
source-ip 0.0.0.0/0
!
action
sla-class ICMP_SLA
```

C)

```
app-route-policy _VPN_10_AAR
vpn-list VPN_50
sequence 21
match
app-list ICMP
source-ip 0.0.0.0/0
!
action
sla-class ICMP_SLA preferred-color mpls
backup-sla-preferred-color public-internet
```

D)

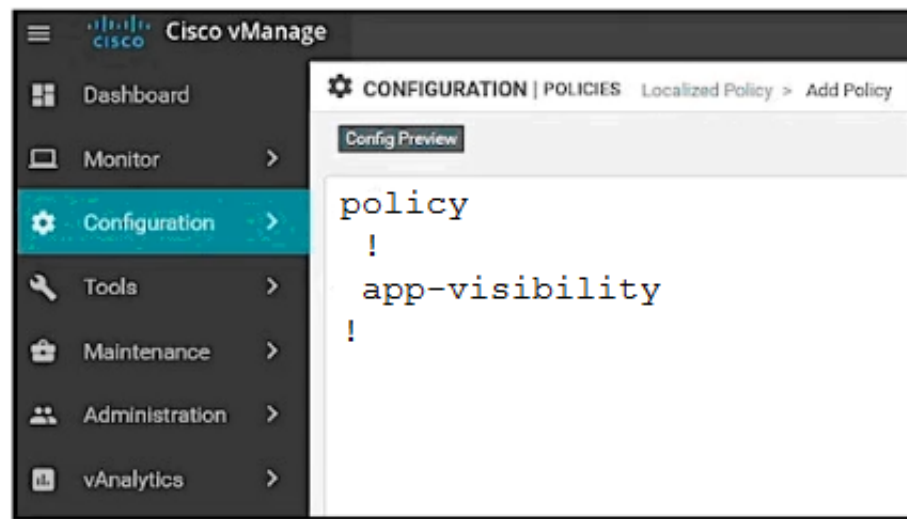
```
app-route-policy _VPN_10_AAR
vpn-list VPN_50
sequence 21
match
app-list ICMP
source-ip 0.0.0.0/0
!
action
sla-class ICMP_SLA preferred-color mpls public-internet
```

- A. Option A
- B. Option B
- C. Option C
- D. Option D

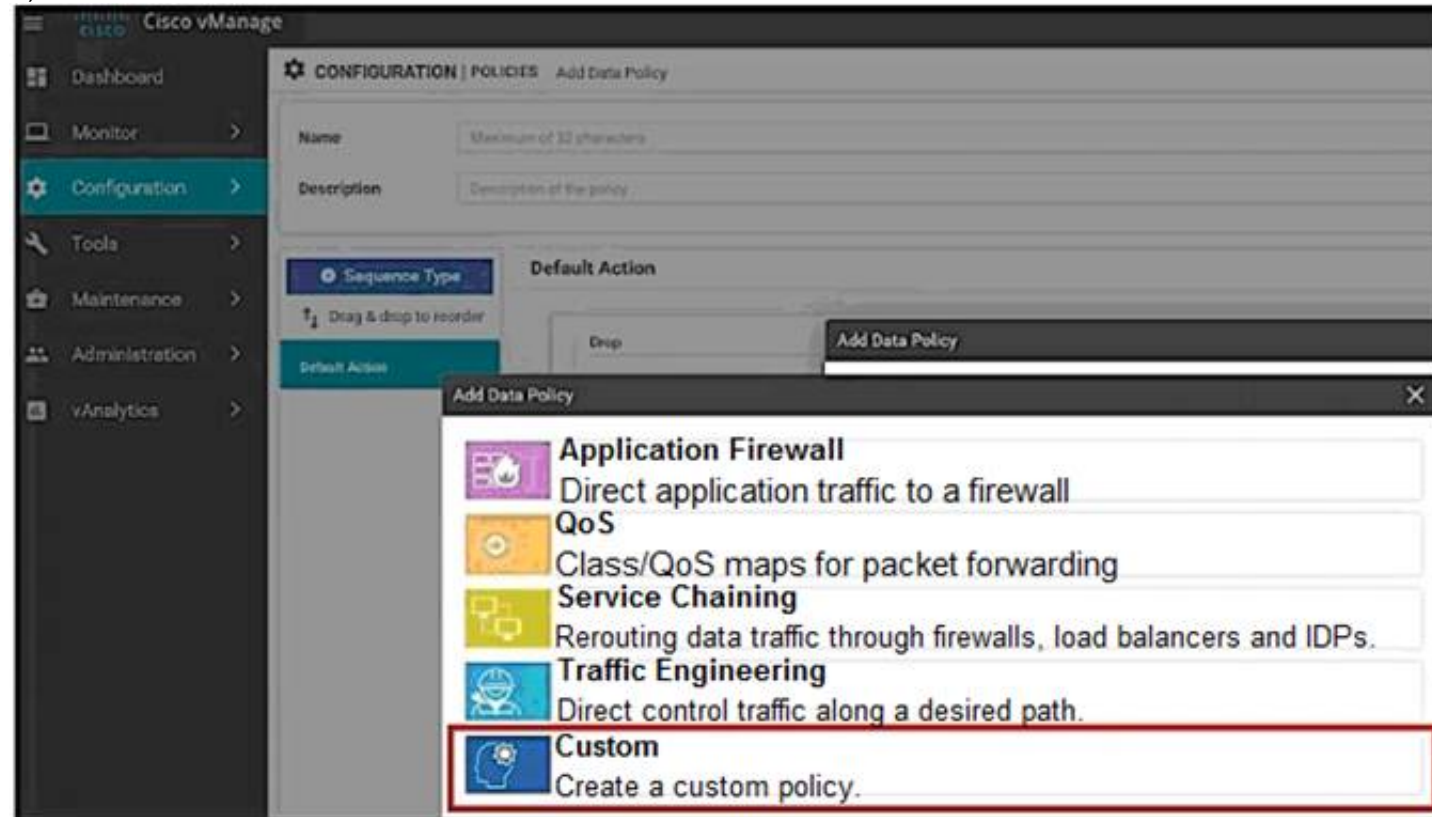
Answer: C

NEW QUESTION 226

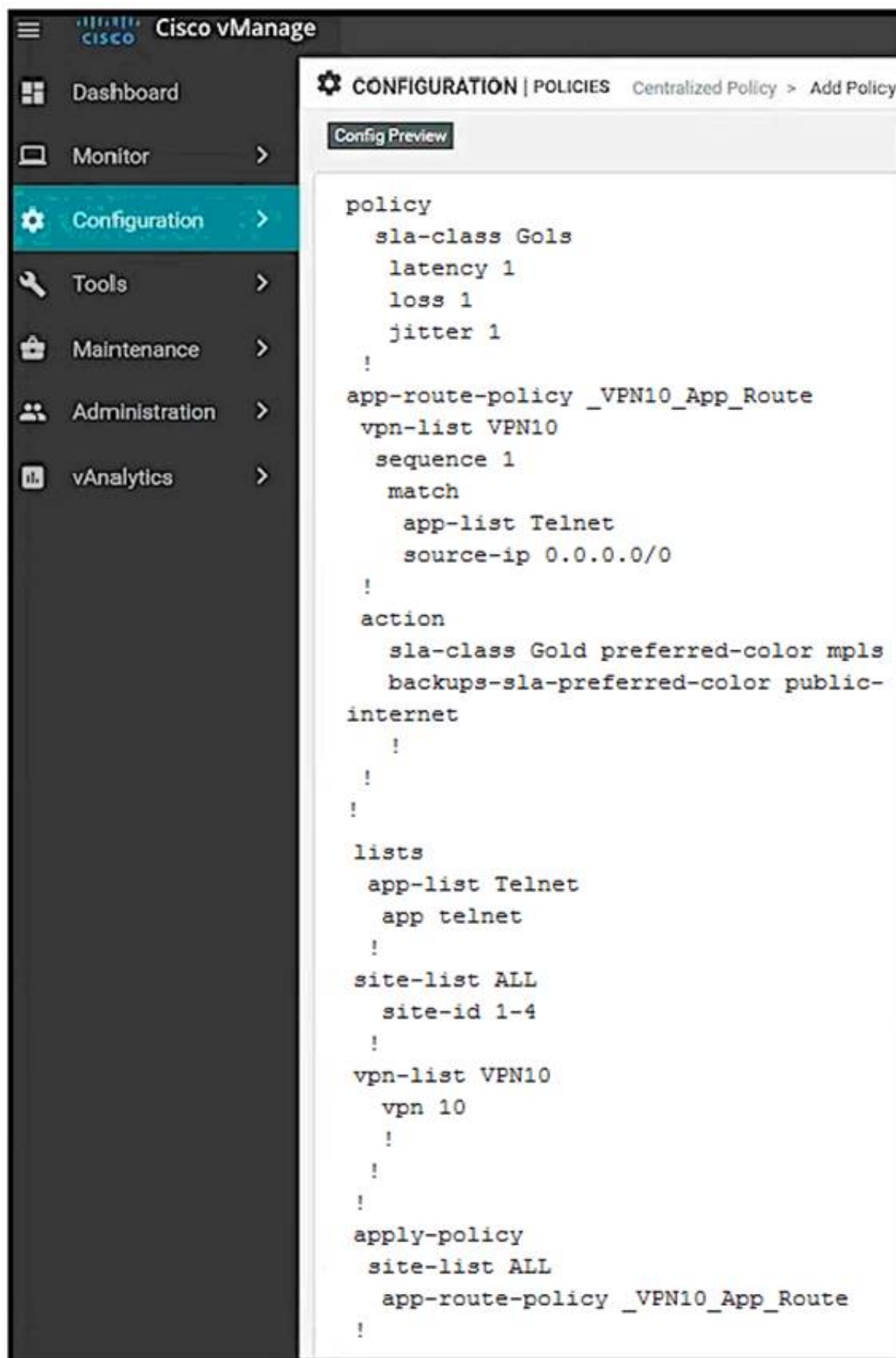
An organization wants to discover, monitor, and track the applications running on the WAN Edge device on the LAN Which configuration achieves this goal?
A)



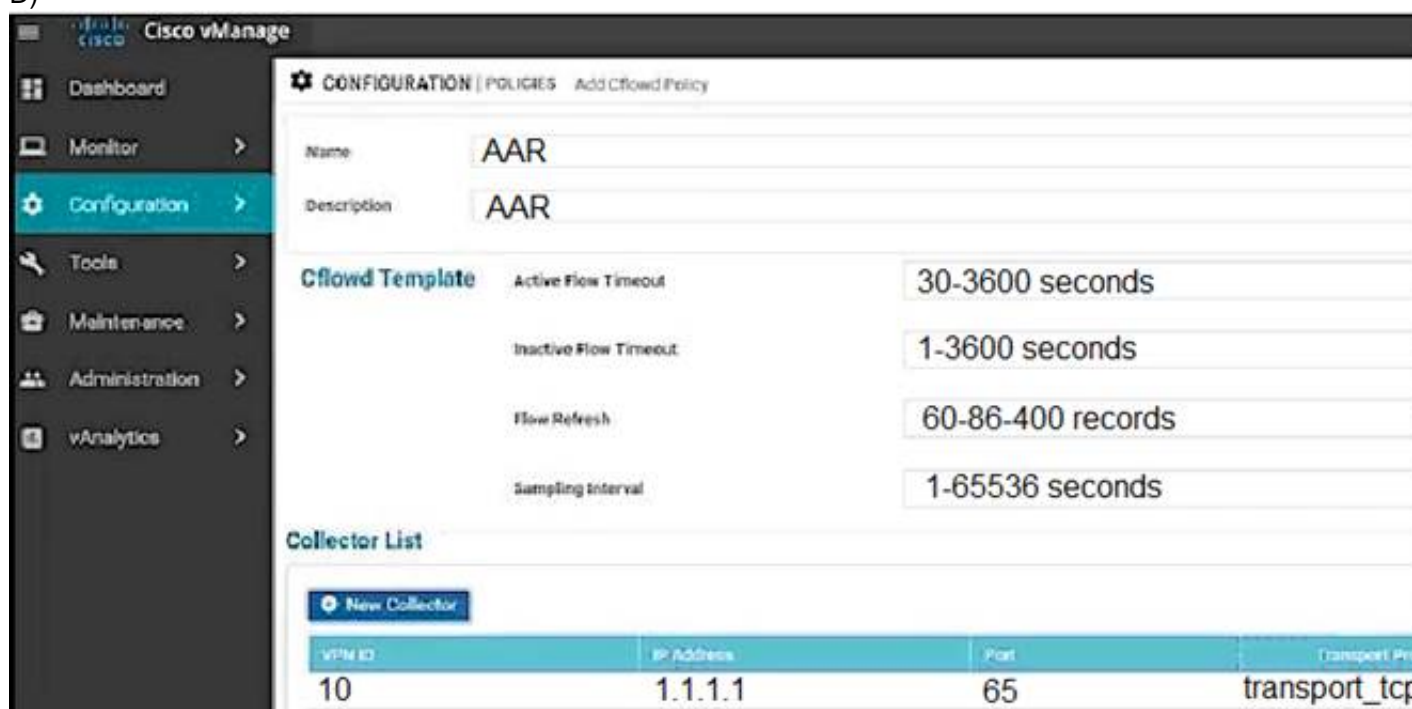
B)



C)



D)



- A. Option A
- B. Option B
- C. Option C
- D. Option D

Answer: D

NEW QUESTION 229

At which layer does the application-aware firewall block applications on a WAN Edge?

- A. 3
- B. 7
- C. 5
- D. 2

Answer: B

NEW QUESTION 230

Which controller is used for provisioning and configuration in a Cisco SD-WAN solution?

- A. vBond
- B. Manage
- C. WAN Edge router
- D. vSmart

Answer: B

NEW QUESTION 235

Which type of connection is created between a host VNet and a transit VNet when configuring Cloud OnRamp for IaaS?

- A. Azure private endpoint
- B. GRE tunnel
- C. IPsec tunnel
- D. Azure peer link

Answer: C

NEW QUESTION 237

An administrator must configure an ACL for traffic coming in from the service-side VPN on a specific WAN device with circuit ID 391897770. Which policy must be used to configure this ACL?

- A. local data policy
- B. central data policy
- C. app-aware policy
- D. central control policy

Answer: A

Explanation:

<https://www.cisco.com/c/en/us/td/docs/routers/sdwan/configuration/policies/vedge/policies-book/Policy-basics.h>

NEW QUESTION 239

In Cisco SD-WAN, what protocol is used for control connections between SD-WAN devices?

- A. DTLS
- B. OMP
- C. BGP
- D. OSPF

Answer: A

Explanation:

<https://www.cisco.com/c/en/us/td/docs/routers/sdwan/configuration/security/vedge/security-book/security-overv>

NEW QUESTION 242

Which protocol runs between the vSmart controllers and WAN Edge routers when the vSmart controller acts like a route reflector?

- A. OMP outside the DTLS/TLS control connection
- B. BGP inside the DTLS/TLS
- C. IPsec inside the DTLS/TLS control connection
- D. OMP inside the DTLS/TLS control connection

Answer: D

NEW QUESTION 243

An engineer wants to track tunnel characteristics within an SLA-based policy for convergence. Which policy configuration will achieve this goal?

- A. App-route policy
- B. VPN membership policy
- C. Control policy
- D. Data policy

Answer: A

Explanation:

An application-aware routing policy matches applications with an SLA, that is, with the data plane tunnel performance characteristics that are necessary to transmit the applications' data traffic. The primary purpose of application-aware routing policy is to optimize the path for data traffic being transmitted by Cisco SD-WAN devices.

NEW QUESTION 246

When a WAN Edge device joins the SD-WAN overlay, which Cisco SD-WAN components orchestrates the connection between the WAN Edge device and a vSmart controller?

- A. vManage
- B. vBond
- C. OMP
- D. APIC-EM

Answer: B

Explanation:

When a vEdge device comes up, how does it automatically discover Cisco vManage and Cisco vSmart Controller and establish connections with them? It does so with help from Cisco vBond Orchestrator.

NEW QUESTION 251

Which policy is configured to ensure that a voice packet is always sent on the link with less than a 50 msec delay?

- A. localized data policy
- B. localized control policy
- C. centralized data policy
- D. centralized control policy

Answer: C

NEW QUESTION 256

Which component of the Cisco SD-WAN control plane architecture facilitates the storage of certificates and configurations for network components?

- A. vSmart
- B. vBond
- C. WAN Edge
- D. vManage

Answer: D

NEW QUESTION 261

Which queue must an engineer configure for control and BFD traffic for convergence on a WAN Edge router?

- A. queue 0
- B. queue 1
- C. queue 2
- D. queue 7

Answer: C

NEW QUESTION 262

A network administrator is creating an OMP feature template from the vManage GUI to be applied to WAN edge routers. Which configuration attribute will avoid the redistribution of the routes back into the OMP from the LAN side?

- A. configure "Number of Paths Advertised per Prefix"
- B. configure "Overlay AS Number"
- C. configure "Send Backup Paths"
- D. configure "ECMP limit"

Answer: B

Explanation:

If you configure the same overlay AS number on multiple vEdge routers in the overlay network, all these routers are considered to be part of the same AS, and as a result, they do not forward any routes that contain the overlay AS number. This mechanism is an additional technique for preventing BGP routing loops in the network.

NEW QUESTION 263

Drag and drop the components from the left onto the corresponding Cisco NFV infrastructure Building Blocks on the right. Not all options are used.



- A. Mastered
 B. Not Mastered

Answer: A

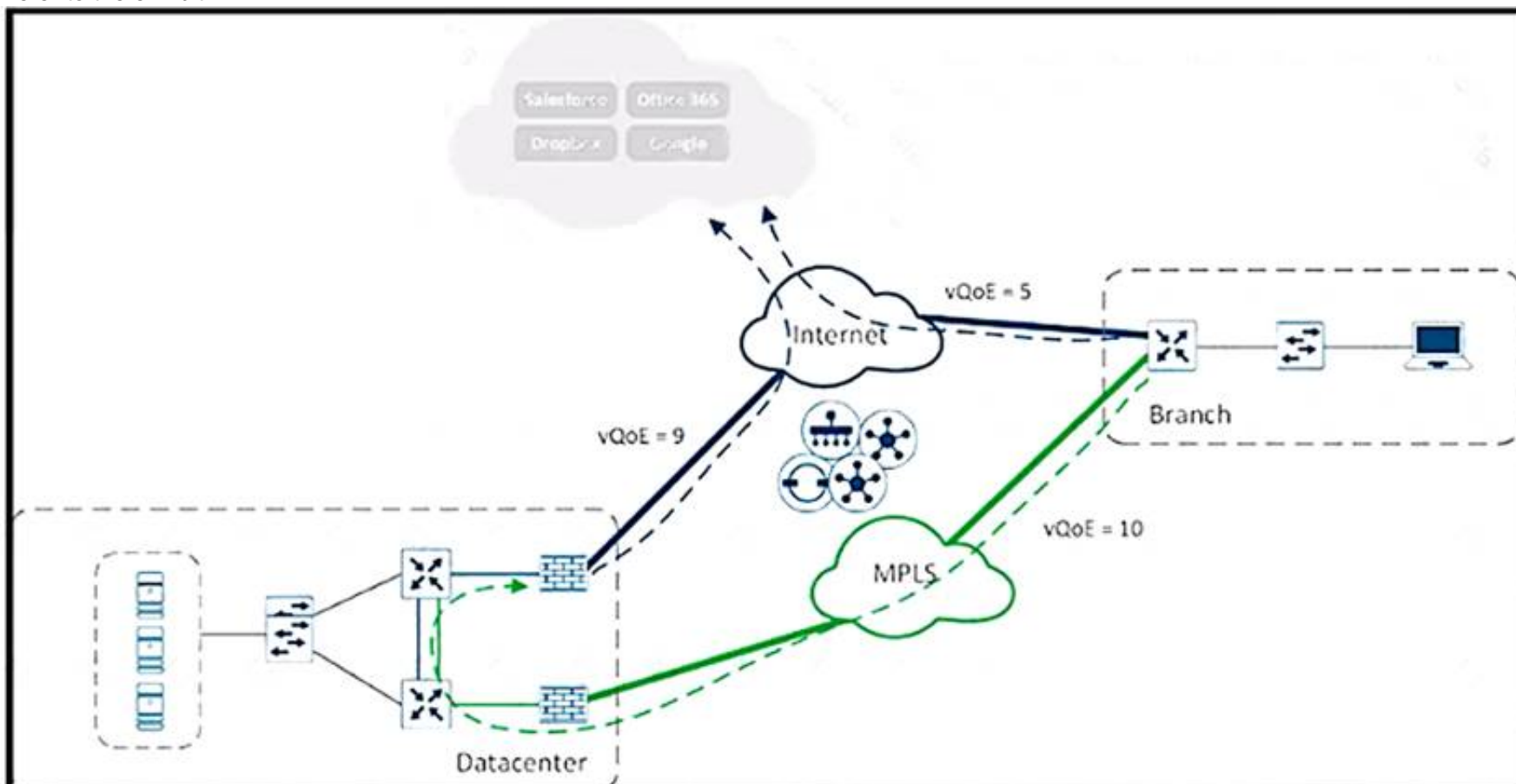
Explanation:

Cisco NNFV Infrastructure Building Blocks

- **Compute:** Cisco Unified Computing System™ (Cisco UCS®) for a carrier class and reliable compute infrastructure.
- **Storage:** Cisco UCS hardware and CEPH provide reliable storage. The user has the options to introduce additional storage as capacity needs grow.
- **Networking:** Cisco Nexus® 9000 series hardware provides high throughput, low latency, and rich feature sets.
- **Virtualized Infrastructure:** Fully integrated Red Hat Enterprise Linux and Red Hat OpenStack Platform runs on top of Cisco Unified Computing System™ (Cisco UCS®). It is open source yet hardened and mature.
- **Management:** Cisco UCS Director functions as a unified management tool across multiple virtual environments. SDN controller is optional.

NEW QUESTION 267

Refer to the exhibit.



A user in the branch is connecting to Office 365 for the first time. Over which path does the branch WAN Edge router traffic follow?

- A. routing table of the branch WAN Edge router

- B. DIA exit of the branch WAN Edge router
- C. forwarded to the gateway site
- D. dropped because the minimum vQoE score has not been met

Answer: B

NEW QUESTION 268

What is a benefit of using REST APIs?

- A. predefined automation and orchestration platform for event management and logging
- B. user-defined automation and integration into other orchestration systems or tools
- C. vAnalytics to simplify operational services integration and real-time event monitoring
- D. predefined SD-WAN controller with other platform integration for event management and logging

Answer: B

NEW QUESTION 271

Which protocol is used to measure loss latency, Jitter, and liveliness of the tunnel between WAN Edge router peers?

- A. OMP
- B. IP SLA
- C. NetFlow
- D. BFD

Answer: D

NEW QUESTION 275

WAN Edge routers are configured manually to use UDP port offset to use nondefault offset values when IPsec tunnels are created. What is the offset range?

- A. 1-19
- B. 0-18
- C. 0-19
- D. 1-18

Answer: C

NEW QUESTION 279

Which Cisco SD-WAN WAN Edge platform supports LTE and Wi-Fi?

- A. vEdge2000
- B. ASR1001
- C. CSR 1000v
- D. ISR 1101

Answer: D

NEW QUESTION 280

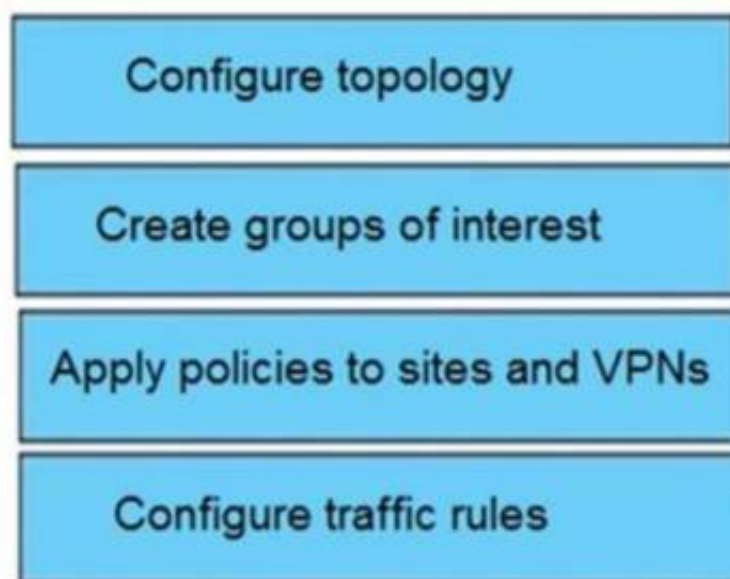
Drag and drop the vManage policy configuration procedures from the left onto the correct definitions on the right.

Create groups of interest	Create the network structure to which the policy applies
Configure traffic rules	Create lists that group together related items that an engineer can call in the match or action components of a policy
Configure topology	Associate a policy with sites and VPNs in the overlay network
Apply policies to sites and VPNs	Create the match and action conditions of a policy

- A. Mastered
- B. Not Mastered

Answer: A

Explanation:



NEW QUESTION 281

A customer must upgrade the cisco SD-WAN devices and controllers from version 19.2 to version 20.3. The devices include WAN Edge cloud, vManage, vSmart, and vBond. Which types of image types of image files are needed for this upgrade?

- A. one file for vManage and one file for all other devices with extension tar.gz
- B. one file for vManage, one for vSmart and one for vBond + WAN Edge Cloud with extension.bin
- C. one file for vManage, one for vSmart and one for vBond + WAN Edge Cloud with extension tar.gz
- D. one file for vManage and one file for all other devices with extension .bin

Answer: C

Explanation:

<https://software.cisco.com/download/home/286320995/type/286321394/release/20.3.3.1>

NEW QUESTION 285

Which command verifies a policy that has been pushed to the vEdge router?

- A. vEdge# show running-config data policy
- B. vEdge# show policy from-vsmart
- C. vSmart# show running-config policy
- D. vSmart# show running-config apply-policy

Answer: B

NEW QUESTION 289

Which two prerequisites must be met before the Cloud onRamp for IaaS is initiated on vManage to expand to the AWS cloud? (Choose two)

- A. Attach the *AmazonCreateVPC* and "Amazon Provision EC2" permission policy to the IAM account
- B. Subscribe to the SD-WAN Edge router AMI in the AWS account
- C. Attach an OSPF feature template to the AWS cloud Edge router template
- D. Attach a device template to the cloud WAN Edge router to be deployed in the AWS
- E. Preprovision the transit VPC in the AWS region

Answer: BD

Explanation:

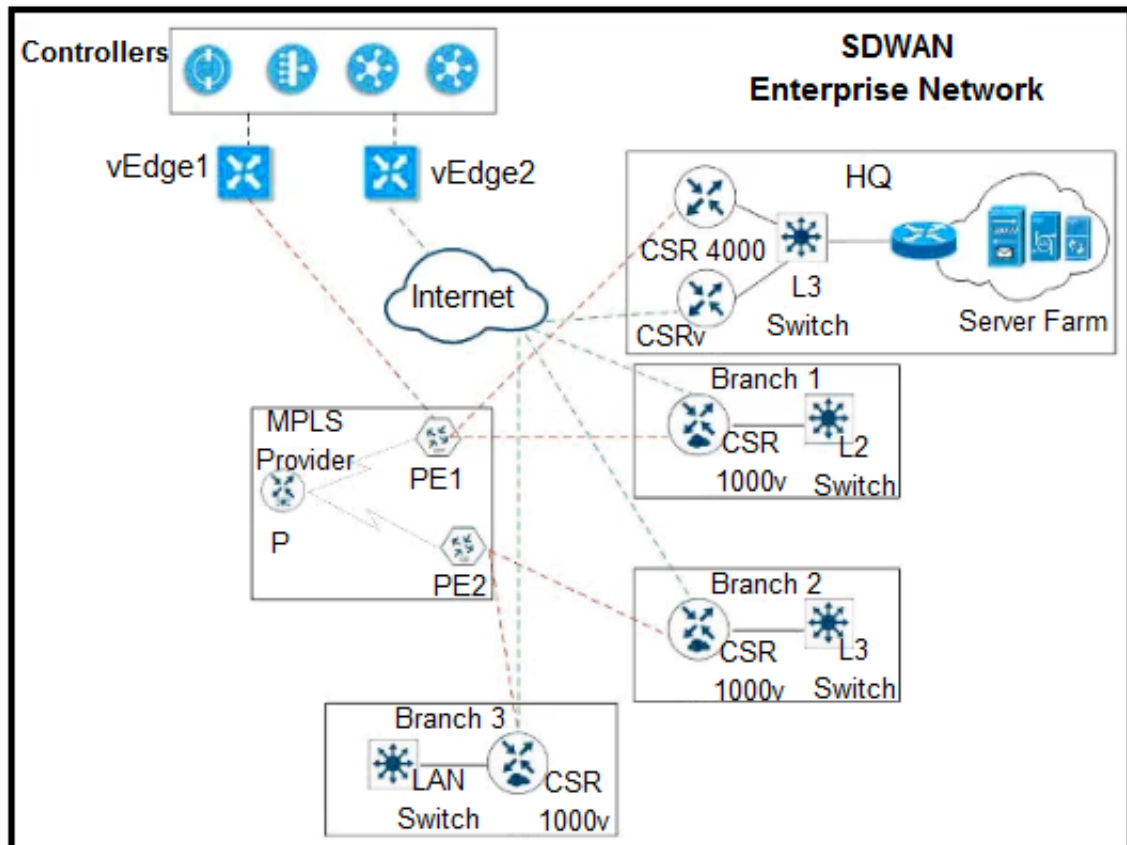
The pre-requisites include verifying you meet the AWS prerequisites, including the necessary AWS credentials and subscriptions to the Amazon Machine Image (AMI) instances for Cisco SD-WAN Edge routers (Cisco CSR 1000v virtual routers or Cisco vEdge Cloud); verifying you have available tokens/licenses for at least two additional Cisco SD-WAN Edge Routers within Cisco vManage; and configuring and deploying device templates for the Cisco SD-WAN Edge routers that will be used within the transit VPCs.

Note that the creation of the customer host VPCs, shown in the figure above, is outside the scope of this document. It is assumed that one or more customer host VPCs have already been created.

https://www.cisco.com/c/en/us/td/docs/solutions/CVD/SDWAN/Cisco_Cloud_onRamp_for_IaaS_AWS_Versio

NEW QUESTION 290

Refer to the exhibit



The network team must configure EIGRP peering at HQ with devices in the service VPN connected to WAN Edge CSRv. CSRv is currently configured with

```
viptela-system:system
device-model      vedge-cloud
host-nam         CSRv
location         CA
system-ip        10.4.4.4
domain-id        1
site-id          1
organization-name ABC
clock timezone   US/Newyork
vbond 10.10.0.1 port 12346
```

```
omp
no shutdown
graceful-restart
```

Which configuration on the WAN Edge meets the requirement?

Which configuration on the WAN Edge meets the requiremnet

A)

```

○ vpn 0
  router
    eigrp
      address-family ipv4-unicast
        maximum-paths 4
        network 10.0.0.0/28
        redistribute omp
  interface ge0/0
    description "Internet Circuit"
    ip address 209.165.200.229/30
    tunnel-interface
      encapsulation ipsec
      color public-internet
      allow-service all
  vpn 512
  interface eth0
    shutdown

```

B)

```

○ vpn 0
  vpn 1
  interface ge0/0
    description "Internet Circuit"
    ip address 209.165.200.229/30
    tunnel-interface
    encapsulation ipsec
    color public-internet
    allow-service all

  router
    eigrp
    address-family ipv4-unicast
    maximum-path paths 4
    network 10.0.0.0/28
    redistribute omp

  interface ge0/1
    ip address 10.0.0.1/28

  vpn 512
  interface eth0
    shutdown
  
```

C)

```

○ vpn 0
  interface ge0/0
    description "Internet Circuit"
    ip address 209.165.200.229/30
    tunnel-interface
    encapsulation ipsec
    color public-internet
    allow-service all

  vpn 1
  router
    eigrp
    address-family ipv4-unicast
    maximum-path paths 4
    network 10.0.0.0/28
    redistribute omp

  interface ge0/1
    ip address 10.0.0.1/28

  vpn 512
  interface eth0
    shutdown
  
```

D)

```

○ vpn 0
  interface ge0/0
    description "Internet Circuit"
    ip address 209.165.200.229/30
    tunnel-interface
    encapsulation ipsec
    color public-internet
    allow-service all

  router
    eigrp
    address-family ipv4-unicast
    maximum-path paths 4
    network 10.0.0.0/28
    redistribute omp

  vpn 512
  interface eth0
    shutdown
  
```

- A. Option A
- B. Option B
- C. Option C
- D. Option D

Answer: C

NEW QUESTION 294

How is the scalability of the vManage increased in Cisco SD-WAN Fabric?

- A. Increase licensing on the vManage
- B. Deploy multiple vManage controllers in a cluster
- C. Deploy more than one vManage controllers on different physical server.
- D. Increase the bandwidth of the WAN link connected to the vManage

Answer: B

NEW QUESTION 295

Refer to the exhibit.

#Branch1-Edge1	#Branch1-Edge2
vpn 0	vpn 0
!	...
interface ge0/1	interface ge0/2
ip address	no shutdown
172.17.113.241/28	!
tunnel-interface	interface ge0/2.704
encapsulation ipsec	ip address 10.113.4.1/30
color mpls restrict	tunnel-interface
!	encapsulation ipsec
no shutdown	color mpls restrict
!	mtu 1496
interface ge0/2.704	no shutdown
ip address 10.113.4.2/30	!
tloc-extension ge0/2	ip route 0.0.0.0/0 10.113.4.2

Which configuration change is needed to configure the tloc-extension on Branch1-Edge1?

- A. interface ge0/2.704
ip address 10.113.4.1/30
tunnel-interface
encapsulation ipsec
color mpls restrict
no shutdown
- B. interface ge0/2.704
ip address 10.113.4.2/30
mtu 1496
tloc-extension ge0/1
- C. interface ge0/2.704
ip address 10.113.4.2/30
mtu 1496
tloc-extension ge0/2
- D. interface ge0/2.704
ip address 10.113.4.1/30
tunnel-interface
encapsulation ipsec
color mpls restrict
mtu 1496
tloc-extension ge0/2
no shutdown

- A. Option A
- B. Option B
- C. Option C
- D. Option D

Answer: B

NEW QUESTION 299

In which Cisco SD-WAN deployment scenario does Cisco Umbrella SIG deliver the most value?

- A. when a centralized Internet breakout solution is implemented
- B. when resource-intensive security operations are offloaded from entry-level WAN Edge devices
- C. when the identity of several WAN Edge devices is verified throughout the network throughout the network

Answer: B

NEW QUESTION 303



Which protocol is used by the REST API to communicate with network services in the Cisco SD-WAN network?

- A. SSL
- B. HTTP
- C. IPsec
- D. SSM

Answer: B

NEW QUESTION 304

Refer to the exhibit.

Hostname	State	System IP	Reachability	Site ID	Device Model	BFD	Control
 BR1-VEEDGE1		10.3.0.1	reachable	300	vEdge Cloud	8	5

What does the BFD value of 8 represent?

- A. number of BFD sessions
- B. hello timer of BFD session
- C. poll-interval of BFD session.
- D. dead timer of BFD session

Answer: A

NEW QUESTION 305

Which protocol is configured on tunnels by default to detect loss, latency, jitter, and path failures in Cisco SD-WAN?

- A. TLS
- B. BFD
- C. OMP
- D. BGP

Answer: B

NEW QUESTION 306

An engineer is configuring a list that matches all IP prefixes with lengths from /1 to /16 in a centralized control policy. Which list accomplishes this task?

- A. 0.0.0.0/1 le 16
- B. 0.0.0.0/0 ge 1
- C. 0.0.0.0/0 le 16
- D. 0.0.0.0/16 ge 1

Answer: A

NEW QUESTION 311

Which destination UDP port is used by WAN Edge router to make a DTLS connection with vBond Orchestrator?

- A. 12343
- B. 12345
- C. 12346
- D. 12347

Answer: C

NEW QUESTION 314

What are two attributes of vRoute? (Choose two)

- A. originator
- B. service
- C. encapsulation
- D. carrier

E. domain ID

Answer: AB

NEW QUESTION 315

If Smart Account Sync is not used, which Cisco SD-WAN component is used to upload an authorized serial number file?

- A. WAN Edge
- B. vManage
- C. vSmart
- D. vBond

Answer: B

Explanation:

https://sdwan-docs.cisco.com/Product_Documentation/vManage_Help/Release_18.3/Configuration/Devices

NEW QUESTION 320

An engineer configures policing with a rate of 125 Bps and a burst rate of 8000 bits, as shown here:

```
policy
  policer p1
  rate
  burst
  exceed drop
!
access-list acl1
  sequence 1
  match
    source-ip 2.2.0.0/16
    destination-ip 10.1.1.0/24 100.1.1.0/24
    destination-port 20 30
    protocol 6 17 23
  !
  action accept
    policer p1
  !
  default-action drop
!
vpn 1
  interface ge0/4
    description Policy ID: B413:A88D:76G7::4
    ip address 10.20.24.15/24
    no shutdown
    access-list acl1 out
  !
```

Which configuration completes this task?

- A. Configure 125 for rate and 1000 for burst.
- B. Configure 1000 for rate and 64000 for burst
- C. Configure 125 for rate and 8000 for burst
- D. Configure 1000 for rate and 1000 for burst

Answer: D

NEW QUESTION 323

Which type of certificate is installed on vManage for a user to access vManage via a web browser?

- A. SD-AVC Certificate
- B. WAN Edge Certificate
- C. Controller Certificate
- D. Web Server Certificate

Answer: D

NEW QUESTION 326

Refer to the exhibit.

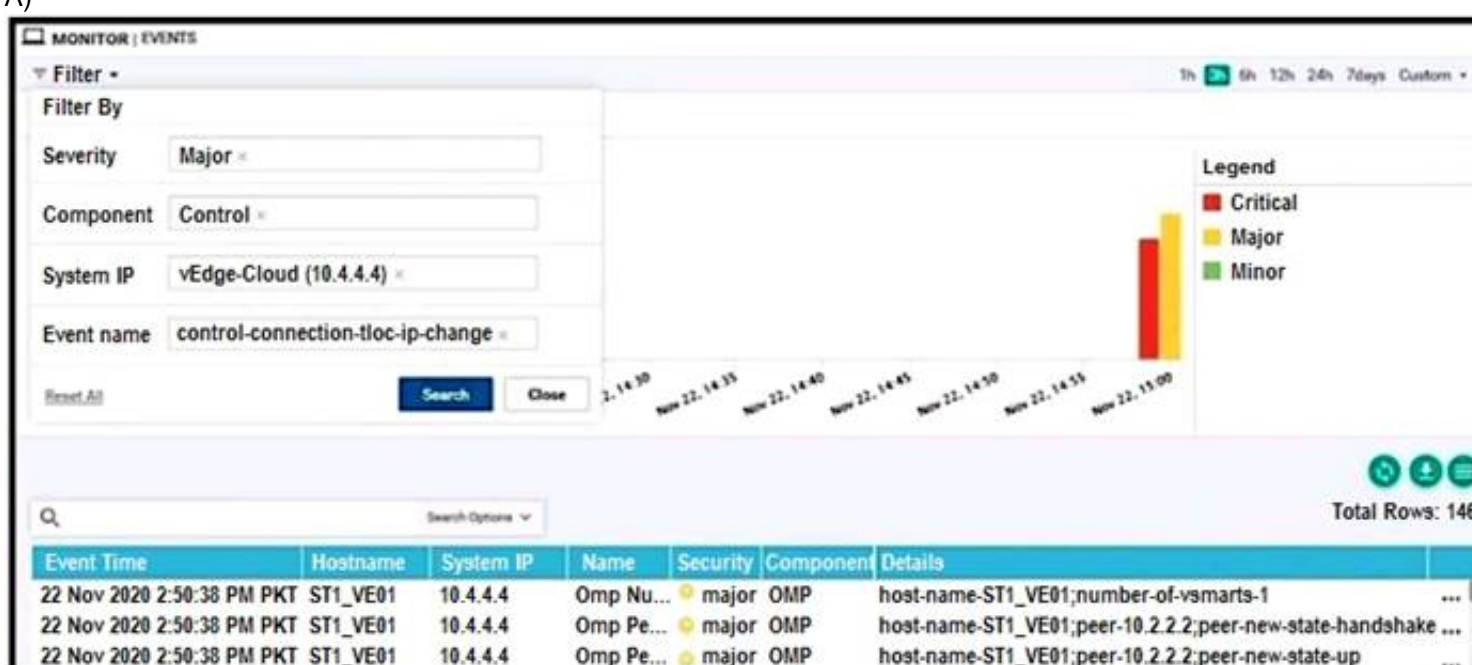
Update Device Template

Variable List (Hover over each field for more information)

System IP	10.4.4.4
Hostname	ST1_VE01
Prefix(vEdge_Default_Gateway)	0.0.0.0/0
Prefix(Mpls_Default_Gateway)	0.0.0.0/0
Address(vEdge_Next_Hop_IP)	10.50.0.102
Address(MPLS_Next_hop_ip)	10.20.0.102
Hostname(Device_host_name)	vEdge-Cloud
Location(Device_location)	US
Latitude(Device_latitude)	40.7128
Longitude(Device_longitude)	74.0060
System IP(Device_system_ip)	10.4.4.4
Site ID(Device_site_id)	1

vManage logs are available for the past few months. A device name change deployed mistakenly at a critical site. How is the device name change tracked by operation and design teams?

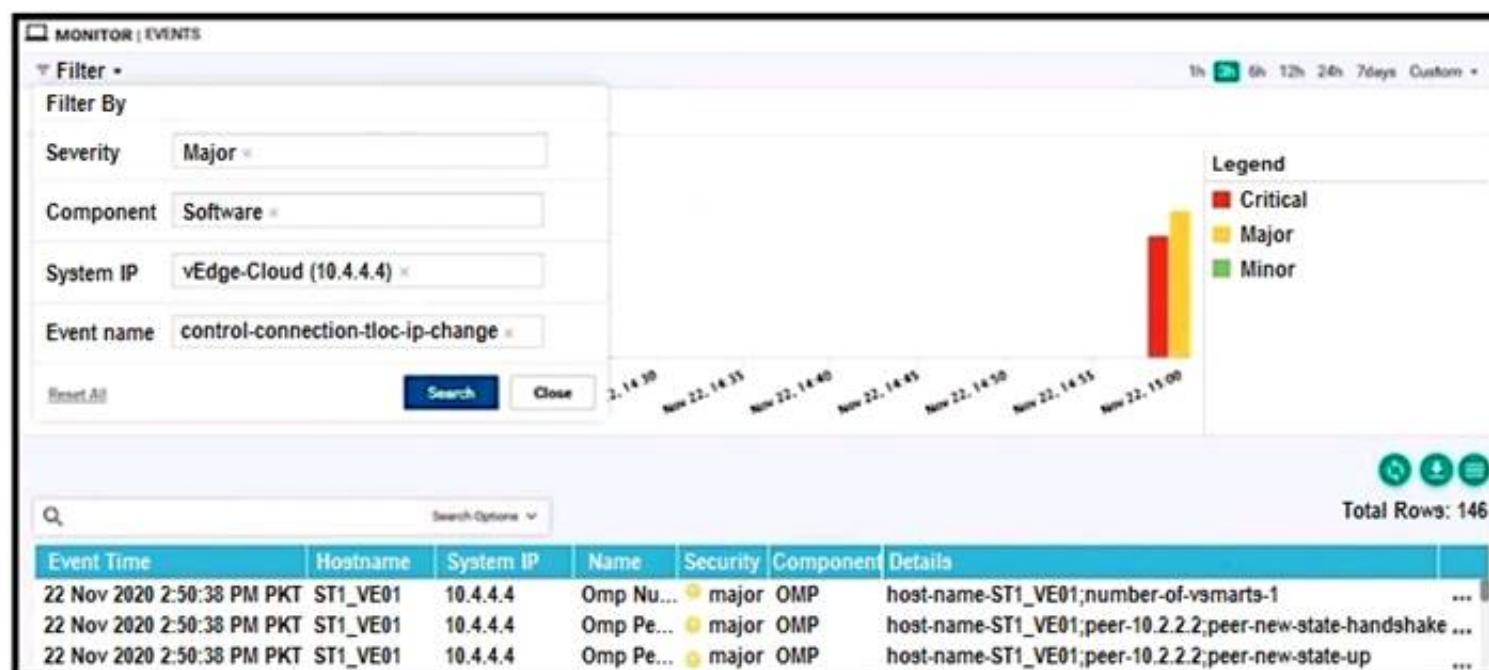
A)



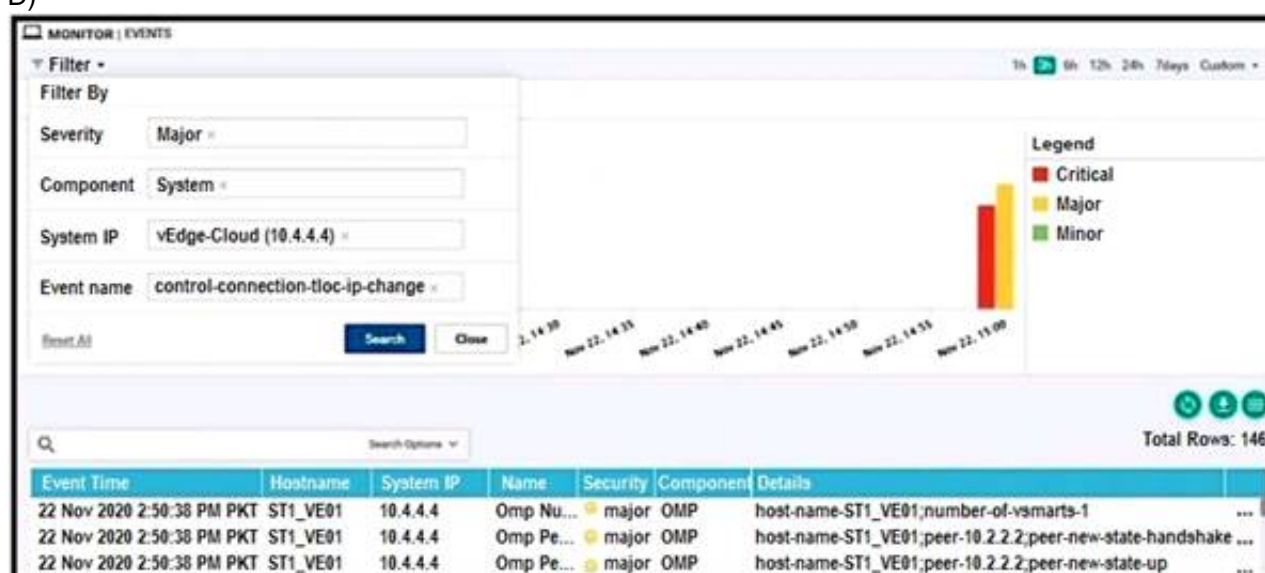
B)



C)



D)



- A. Option A
- B. Option B
- C. Option C
- D. Option D

Answer: D

NEW QUESTION 328

Drag and drop the BFD parameters from the left onto the BFD configurations on the right.

poll interval

color

hello interval

PMTU discovery

multiplier

BFD for Transport Tunnel

BFD for Application-Aware Routing

- A. Mastered
- B. Not Mastered

Answer: A

Explanation:

https://sdwandocs.cisco.com/Product_Documentation/vManage_Help/Release_18.2/Configuration/Templates/B

NEW QUESTION 329

What is a description of vManage NMS?

- A. It is accessible only from VPN 512 (the management VPN).
- B. A cluster requires device templates to be created on and attached to the same server
- C. It is a software process on a dedicated WAN Edge router in the network.
- D. A cluster consists of a minimum of two vManage NMSs

Answer: B

Explanation:

<https://www.cisco.com/c/en/us/td/docs/routers/sdwan/configuration/optimization-ha/vedge/network-optimizatio>

NEW QUESTION 333

A network administrator is tasked to make sure that an OMP peer session is closed after missing three consecutive keepalive messages in 3 minutes. Additionally, route updates must be sent every minute. If a WAN Edge router becomes unavailable, the peer must use last known information to forward packets for 12 hours. Which set of configuration commands accomplishes this task?

- ☒ `omp
timers
 advertisement-interval 60
 holdtime 180
 graceful-restart-timer 43200`
- ☐ `omp
timers
 advertisement-interval 1
 holdtime 180
 graceful-restart-timer 43200`
- ☐ `omp
timers
 advertisement-interval 1
 holdtime 180
 graceful-restart-timer 720`
- ☐ `omp
timers
 advertisement-interval 60
 holdtime 60
 graceful-restart-timer 720`

- A. Option A
- B. Option B
- C. Option C
- D. Option D

Answer: A

Explanation:

https://sdwan-docs.cisco.com/Product_Documentation/vManage_Help/Release_17.2/Configuration/Templates/O

NEW QUESTION 337

In a customer retail network with multiple data centers, what does the network administrator use to create a regional hub topology?

- A. control policy on vManage
- B. control policy on vSmart
- C. data policy on vSmart
- D. app route policy on vSmart

Answer: A

NEW QUESTION 338

Which component is responsible for routing protocols such as BGP and OSPF in a Cisco SD-WAN solution?

- A. vSmart Controller
- B. vBond Orchestrator
- C. vManage
- D. WAN Edge Router

Answer: D

Explanation:

WAN Edge router - This device, available as either a hardware appliance or software-based router, sits at a physical site or in the cloud and provides secure data plane connectivity among the sites over one or more WAN transports. It is responsible for traffic forwarding, security, encryption, quality of service (QoS), routing protocols such as Border Gateway Protocol (BGP) and Open Shortest Path First (OSPF), and more.

NEW QUESTION 339

An administrator needs to configure SD-WAN to divert traffic from the company's private network to an ISP network. What action should be taken to accomplish this goal?

- A. configure the control policy
- B. configure the data policy
- C. configure the data security policy
- D. configure the application aware policy

Answer: B

Explanation:

Data policy influences the flow of data traffic traversing the network

NEW QUESTION 341

Drag and drop the Cisco SD-WAN components from the left onto their functions on the right.

vBond Orchestrator	IPsec key reflection and rekeying
vManage	first point of authentication
vSmart Controller	passes data plane traffic
WAN Edge Router	used to build configuration and policies

- A. Mastered
- B. Not Mastered

Answer: A

Explanation:

vBond Orchestrator	vSmart Controller
vManage	vBond Orchestrator
vSmart Controller	WAN Edge Router
WAN Edge Router	vManage

NEW QUESTION 345

An enterprise has these three WAN connections:

- > public Internet
- > business internet
- > MPLS

An engineer must configure two available links to route traffic via both links. Which configuration achieves this objective?

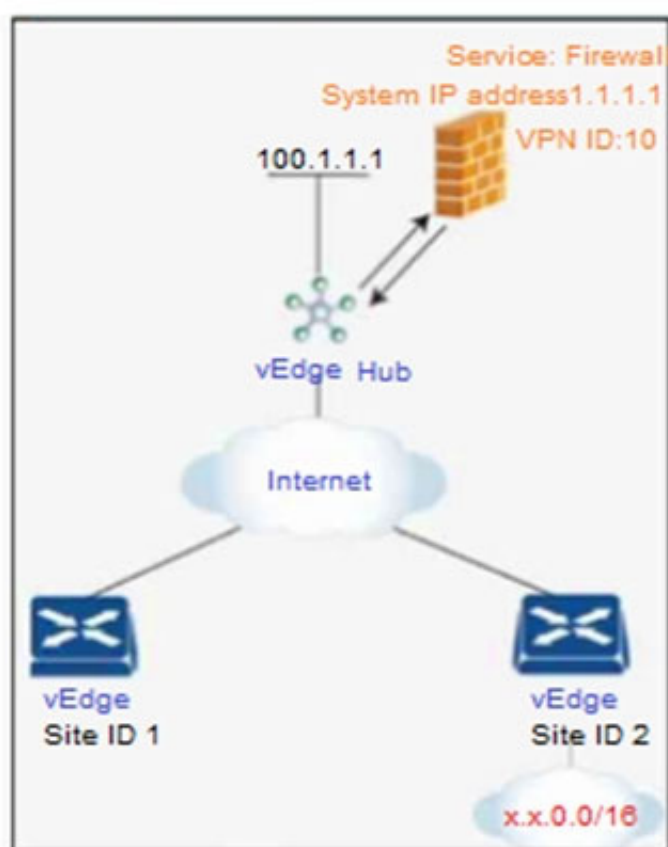
- ☐ omp
no shutdown
route-limit 2
- ☐ omp
no shutdown
send-path-limit 2
- ☐ omp
no shutdown
overlay-as 2
- ☐ omp
no shutdown
ecmp-limit 2

- A. Option A
- B. Option B
- C. Option C
- D. Option D

Answer: B

NEW QUESTION 349

Refer to the exhibit.



An engineer is configuring service chaining. Which set of configurations is required for all traffic from Site ID 1 going toward Site ID 2 to get filtered through the firewall on the hub site?

A)

```
vpn 20
 service FW address 1.1.1.1
 policy
  lists
   site-list firewall-sites
    site-id 1
 control-policy firewall-service
  sequence 10
   match route
    site-id 2
   action accept
   set service FW vpn 20
 default-action accept
 apply-policy
  site-list firewall-sites control-policy firewall-service out
```

B)

```
vpn 10
 service FW address 1.1.1.1
 policy
  lists
   site-list firewall-sites
    site-id 1
 control-policy firewall-service
  sequence 10
   match route
    site-id 2
   action accept
   set service FW vpn 10
 default-action accept
 apply-policy
  site-list firewall-sites control-policy firewall-service out
```

C)

```
vpn 10
service FW address 1.1.1.1
policy
lists
site-list firewall-sites
site-id 1
control-policy firewall-service
sequence 10
match route
site-id 2
action accept
set service FW vpn 20
default-action accept
apply-policy
site-list firewall-sites control-policy firewall-service out
```

D)

```
vpn 10
service FW address 1.1.1.2
policy
lists
site-list firewall-sites
site-id 1
control-policy firewall-service
sequence 10
match route
site-id 2
action accept
set service FW vpn 10
default-action accept
apply-policy
site-list firewall-sites control-policy firewall-service out
```

- A. Option A
- B. Option B
- C. Option C
- D. Option D

Answer: B

Explanation:

https://www.cisco.com/c/en/us/td/docs/routers/sdwan/configuration/policies/vedge/policies-book/service-chainin

NEW QUESTION 351

Which scheduling method is configured by default for the eight queues in the cloud vEdge router1?

- A. low latency queue
- B. priority queue
- C. weighted random early detection
- D. weighted round robin

Answer: D

NEW QUESTION 353

How do WAN Edge devices operate when vSmart is inaccessible or fails to be reached by the WAN Edge?

- A. They cease to forward traffic in the data plane.
- B. They continue operation normally.
- C. They continue to receive reachability updates.
- D. They continue operating normally for a configurable time.

Answer: D

NEW QUESTION 358

Which command displays BFD session summary information per TLOC on vEdge routers?

- A. show bfd history
- B. show bfd summary
- C. show bfd sessions
- D. show bfd tloc-summary-list

Answer: D

NEW QUESTION 359

Refer to exhibit. An engineer is troubleshooting tear of control connection even though a valid CertificateSerialNumber is entered. Which two actions resolve Issue? (Choose two)

PEER PEER	PEER TYPE	PEER PRIVATE	PEER PROTOCOL	SITE SYSTEM	DOMAIN PUBLIC	PRIVATE IP	LOCAL PORT	REMOTE PUBLIC IP	REPEAT PORT	REPEAT REMOTE
INSTANCE	STATE		ERROR	IP	ID	DOWNTIME				
0	vbond	dtls	0.0.0.0	9	0	0	192.168.0.231	12346	192.168.0.231	12346 default
tear_down		CRTREJ	SER NOERR		2019-06-01T19:06:32+0200					

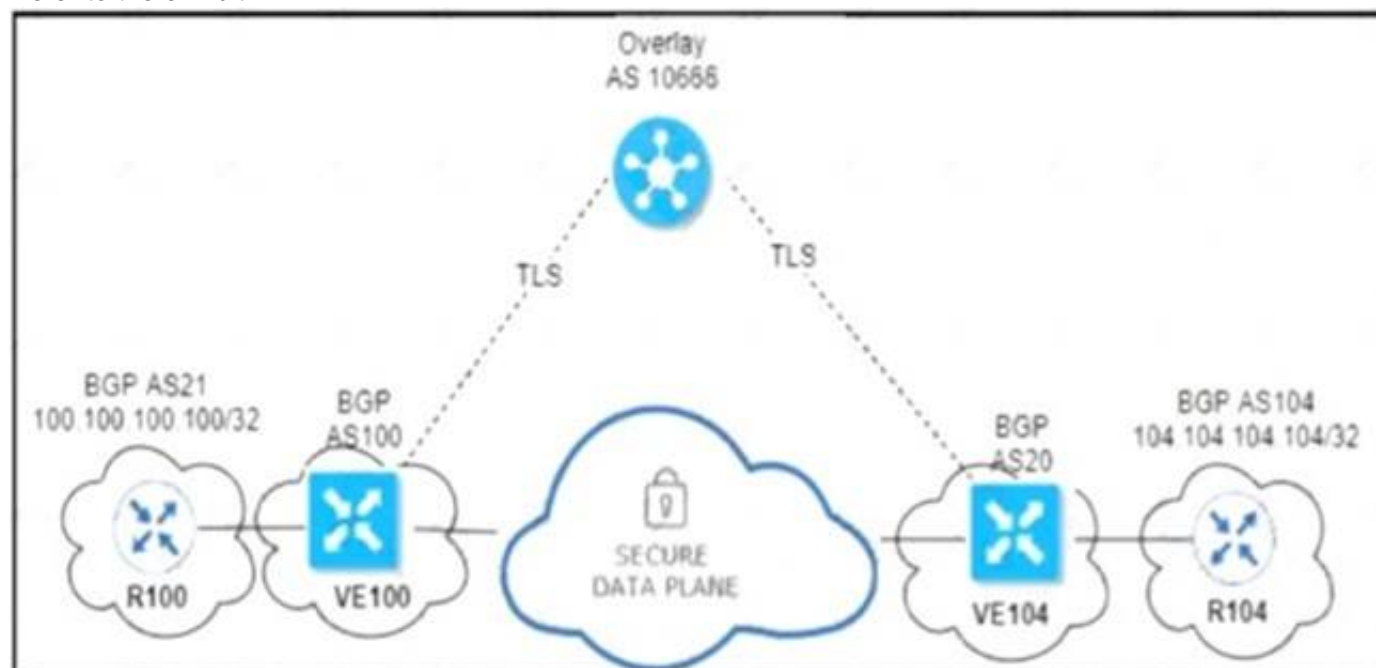
- A. Restore network reachability on the controller.
- B. Enter a valid serial cumber on the controller for a given device

- C. Enter a valid product ID (mode) on the PNP portal.
- D. Match the serial number file between the controller
- E. Remove the duplicate IP in the network

Answer: BC

NEW QUESTION 364

Refer to the exhibit.



An engineer configured OMP with an overlay-as of 10666. What is the AS-PATH for prefix 104.104.104.104/32 on R100?

- A. 100 10666
- B. 100 20 104
- C. 100 10666 20 104
- D. 100 10666 104

Answer: A

NEW QUESTION 367

Which multicast component is irrelevant when defining a multicast replicator outside the local network without any multicast sources or receivers?

- A. PIM interfaces
- B. TLOC
- C. overlay BFD
- D. OMP

Answer: A

NEW QUESTION 371

Which on-the-box security feature supported by the Cisco ISR 4451 SD-WAN device and not on vEdge?

- A. Cloud Express service
- B. Enterprise Firewall with Application Awareness
- C. reverse proxy
- D. IPsec/GRE cloud proxy

Answer: B

Explanation:

<https://www.cisco.com/c/en/us/products/collateral/software/one-wan-subscription/guide-c07-740642.html#Step2>

NEW QUESTION 373

Which action is performed during the onboarding process when a WAN Edge router is connected to ZTP server ztp.viptela.com?

- A. The router is connected to WAN Edge Cloud Center
- B. The router is synced with vSmart Controller via an IPsec tunnel
- C. The router receives its vBond Orchestrator information
- D. The router is connected to vSmart Controller via a DTLS/TLS tunnel

Answer: C

NEW QUESTION 376

A WAN Edge device has several service VPNs with no routing protocol configured in the service VPNs. The device must be configured so that all connected routes are visible in OMP for VPN 10. Which configuration meets the requirement?

A)

```
vpn 10
name "Service VPN 10"
omp
redistribute connected
```

B)

```
omp
no shutdown
graceful-restart
advertise connected
```

C)

```
omp
no shutdown
graceful-restart
redistribute connected
```

D)

```
vpn 10
name "Service VPN 10"
omp
advertise connected
```

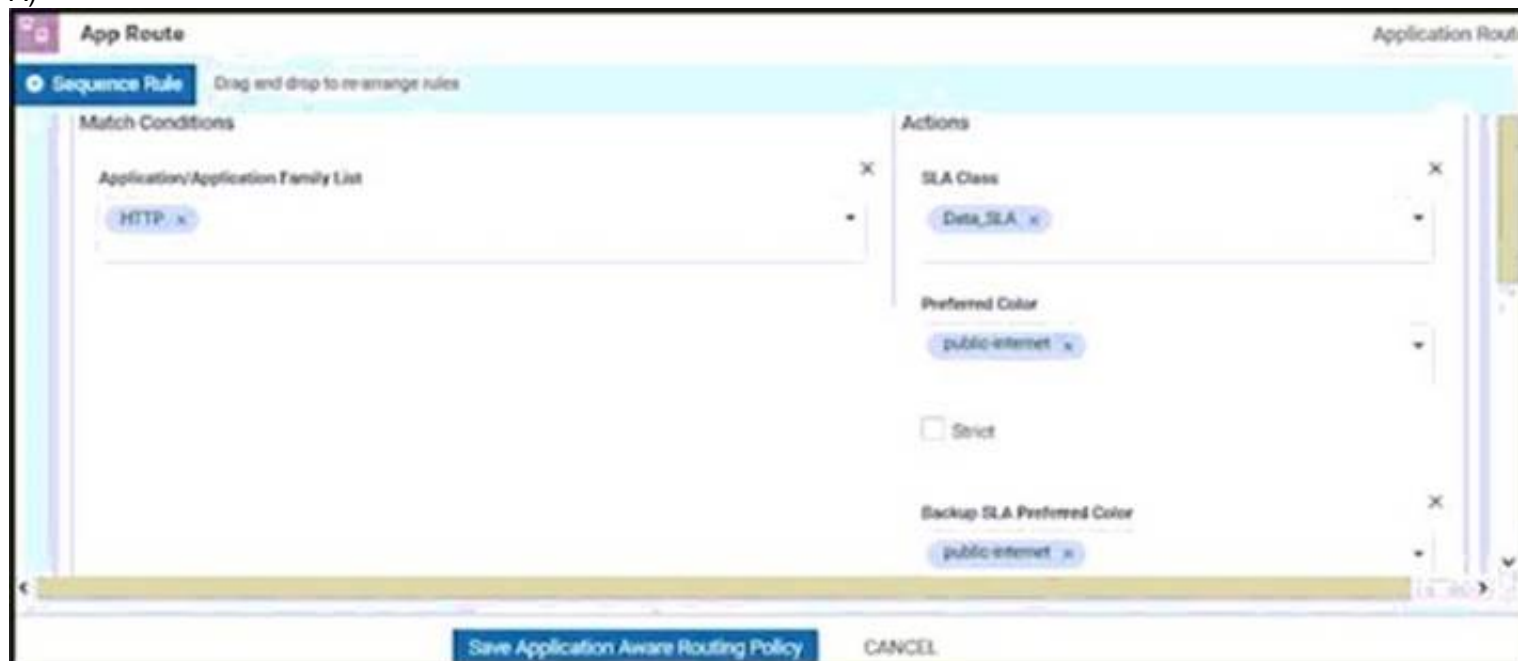
- A. Option A
- B. Option B
- C. Option B
- D. Option C

Answer: D

NEW QUESTION 380

An engineer must improve video quality by limiting HTTP traffic to the Internet without any failover. Which configuration in vManage achieves this goal?

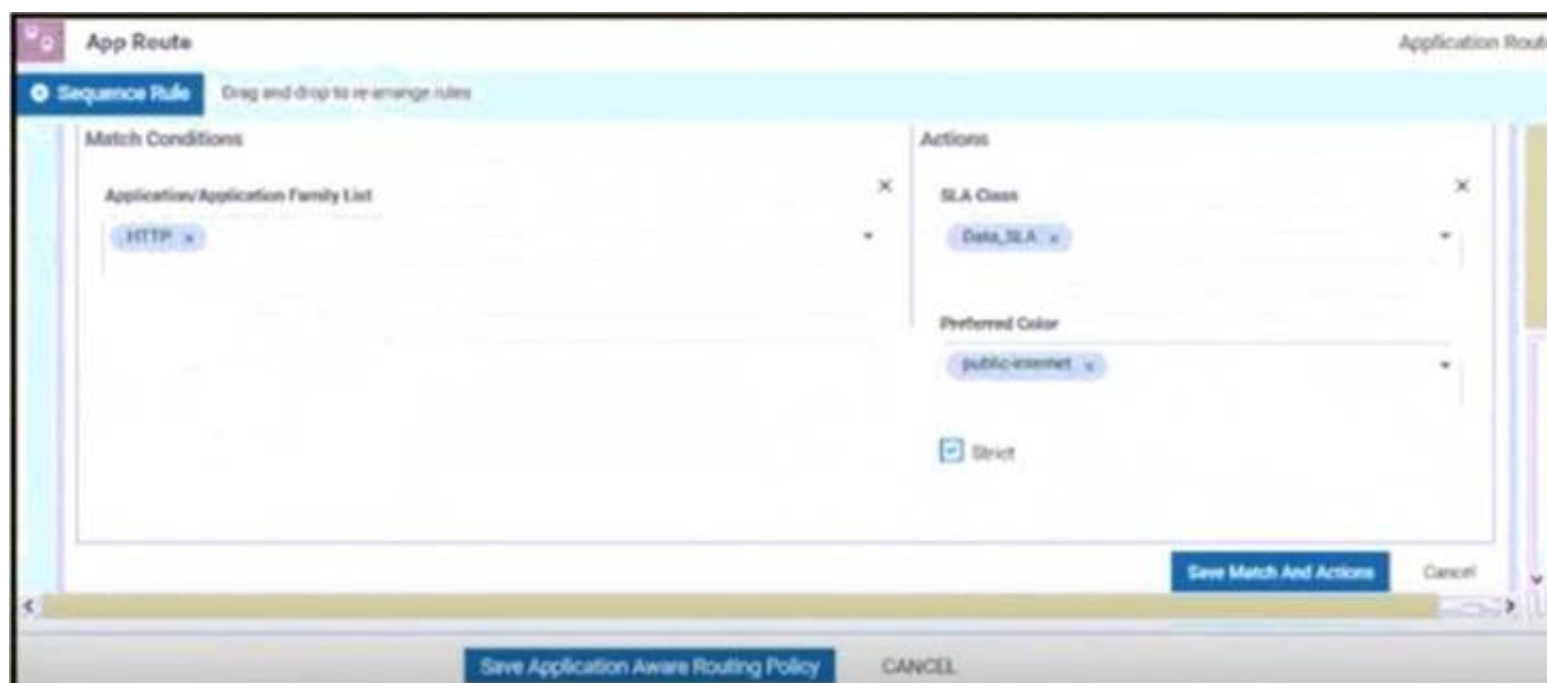
A)



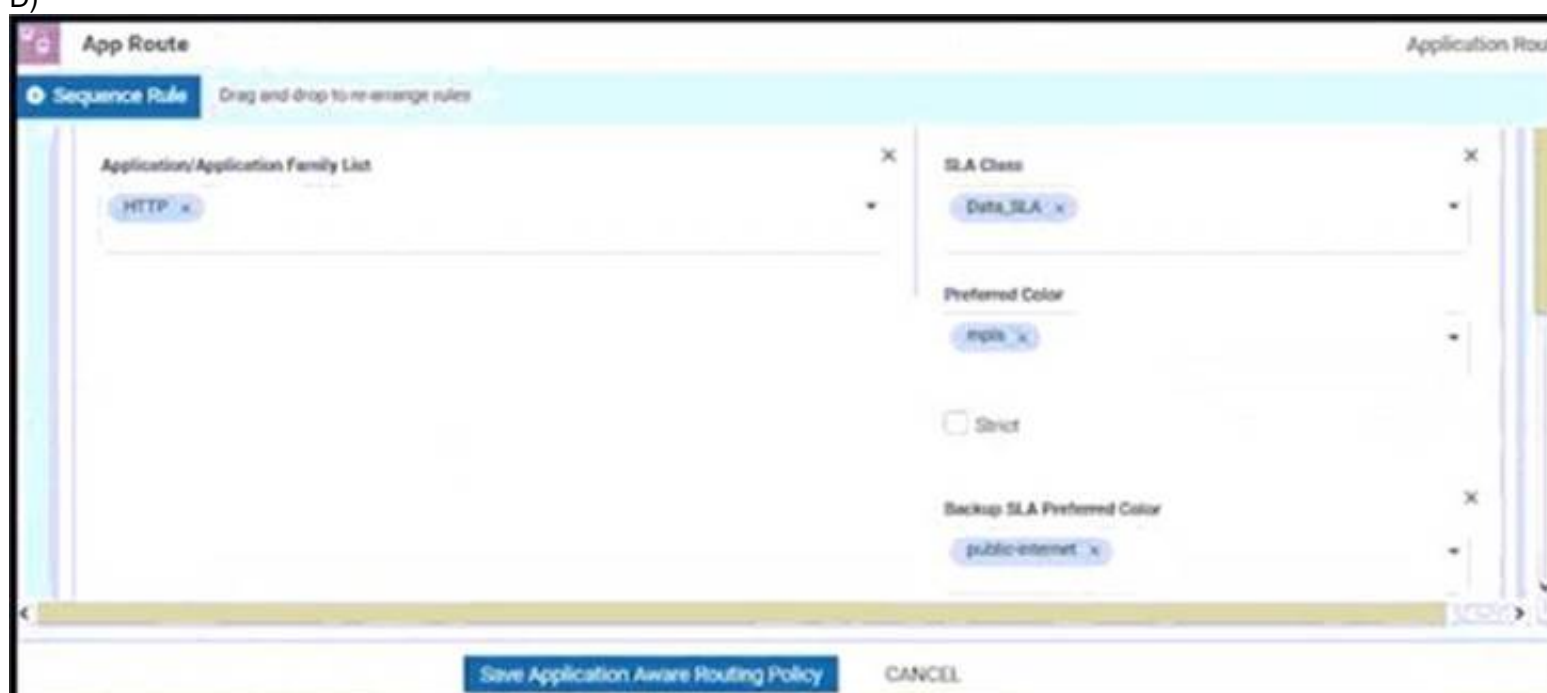
B)



C)



D)



- A. Option A
- B. Option B
- C. Option C
- D. Option D

Answer: C

NEW QUESTION 381

What is a benefit of the application-aware firewall?

- A. It blocks traffic by MAC address
- B. It blocks traffic by MTU of the packet.
- C. It blocks traffic by application.
- D. It blocks encrypted traffic

Answer: C

NEW QUESTION 382

Which device information is required on PNP/ZTP to support the zero-touch onboarding process?

- A. serial and chassis numbers
- B. interface IP address
- C. public DNS entry
- D. system IP address

Answer: A

Explanation:

<https://www.cisco.com/c/dam/en/us/td/docs/solutions/CVD/SDWAN/sd-wan-wan-edge-onboarding-deploy-guid>

NEW QUESTION 383

Which two mechanisms are used to guarantee the integrity of data packets in the Cisco SD-WAN architecture data plane? (Choose two)

- A. transport locations
- B. authentication headers
- C. certificates
- D. TPM chip

E. encapsulation security payload

Answer: BE

Explanation:

https://sdwan-docs.cisco.com/Product_Documentation/Software_Features/Release_18.4/Security/01Security_Ov

NEW QUESTION 386

Which OMP route is selected for equal OMP route preference values on WAN Edge routers?

- A. route with higher TLOC preference value
- B. route with origin type of connected
- C. route with origin type of static
- D. route with lower TLOC preference value

Answer: A

NEW QUESTION 388

Which OSPF command makes the WAN Edge router a less preferred exit from a site with a dual WAN Edge design?

A)

```
vpn vpn-id
router
ospf
area number
range prefix/length
```

B)

```
vpn vpn-id
router
ospf
max-metric
```

C)

```
vpn vpn-id
router
ospf
area number
no-summary
```

D)

```
vpn vpn-id
router
ospf
area number
nssa
no-summary
```

- A. Option A
- B. Option B
- C. Option C
- D. Option D

Answer: B

NEW QUESTION 391

Which routing protocol is used to exchange control plane information between vSmart controllers and WAN Edge routers in the Cisco SD-WAN secure extensible network?

- A. BGP
- B. OSPF
- C. BFD
- D. OMP

Answer: D

NEW QUESTION 395

The network administrator is configuring a QoS scheduling policy on traffic received from transport side tunnels on WAN Edge 5000 routers at location 406141498. Which command must be configured on these devices?

- A. cloud-qos
- B. service qos
- C. cloud-mis qos
- D. mis qos

Answer: A

NEW QUESTION 396

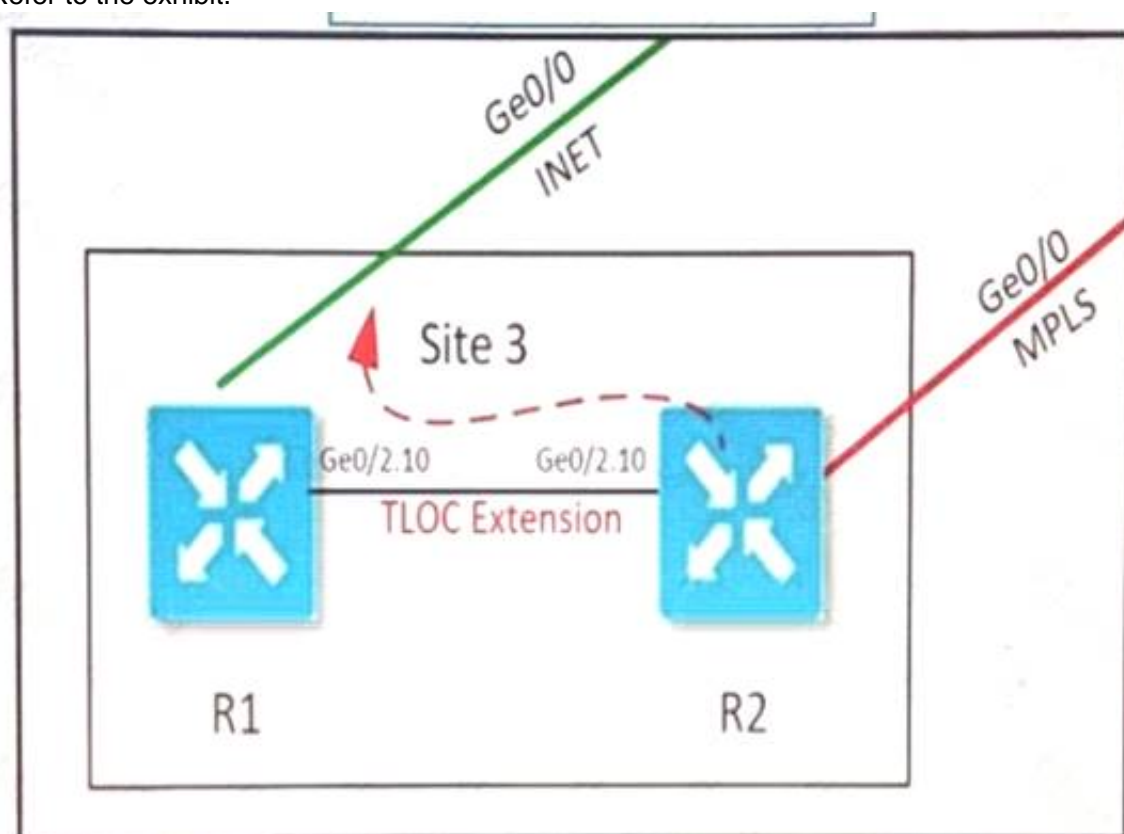
What is the procedure to upgrade all Cisco SD-WAN devices to a recent version?

- A. The upgrade is performed for a group of WAN Edge devices first to ensure data-plane availability when other controllers are updated.
- B. The upgrade is performed first on vManage, then on WAN Edge devices, then on vBond and finally on vSmart The reboot must start from WAN Edge devices.
- C. Upgrade and reboot are performed first on vManage then on vBond then on vSmart
- D. and finally on the Cisco WAN Edge devices.
- E. Upgrade and reboot are performed first on vBond
- F. then on vSmart
- G. and finally on the Cisco WAN Edge devices.

Answer: C

NEW QUESTION 397

Refer to the exhibit.



Which configuration extends the INET interface on R1 to be used by R2 for control and data connections?

A)

```
R1
interface ge0/2
no shutdown
interface ge0/2.10
ip address 43.43.43 2/30
tloc-extension ge0/0

R2
interface ge0/2
no shutdown
interface ge0/2.10
ip address 43.43.43 1/30
tloc-extension ge0/0
```

B)

```
R1
interface ge0/2
interface ge0/2.10
ip address 43.43.43 2/30
tloc-extension ge0/0
tunnel-interface
color public-internet

R2
interface ge0/2
interface ge0/2.10
ip address 43.43.43 1/30
tunnel-interface
color public-internet
```

C)

```
R1
interface ge0/2
mtu 1504
no shutdown
interface ge0/2.10
ip address 43.43.43 2/30
tloc-extension ge0/0

R2
interface ge0/2
mtu 1504
no shutdown
interface ge0/2.10
ip address 43.43.43 1/30
tunnel-interface
color public-internet
```

- A. Option A
- B. Option B
- C. Option C

Answer: C








Explanation:

<https://www.ciscolive.com/c/dam/r/ciscolive/us/docs/2018/pdf/BRKRST-2091.pdf>

Subinterfaces require a physical, parent interface to be defined in VPN 0, and also require the subinterface MTU to be four bytes lower than the physical interface due to the 802.1q tag. It is recommended to configure the parent physical interface for an MTU of 1504 to take care of this requirement.

NEW QUESTION 402

Refer to the exhibit.

Address Family	 <input checked="" type="radio"/> On <input type="radio"/> Off
Address Family	 ipv4-unicast 
Maximum Number of Prefixes	 <input type="text"/>
Route Policy In	 <input type="radio"/> On <input checked="" type="radio"/> Off
Route Policy Out	 <input checked="" type="radio"/> On <input type="radio"/> Off
Policy Name	 eBGP_Community_Policy

The engineer must assign community tags to 3 of its 74 critical server networks as soon as that are advertised to BGP peers. These server networks must not be advertised outside AS. Which configuration fulfill this requirement?

A)

```

policy
route-policy eBGP_Community_Policy
sequence 1
match
address Community_Prefix
action accept
set
community 999:65000 local-as
default-action reject
lists
prefix-list Community_Prefix
ip-prefix 20.20.20.0/24
ip-prefix 21.21.21.0/24
ip-prefix 22.22.22.0/24

```

B)

```

policy
route-policy eBGP_Community_Policy
sequence 1
match
address Community_Prefix
action accept
set
community 999:65000 no-export
default-action accept
lists
prefix-list Community_Prefix
ip-prefix 20.20.20.0/24
ip-prefix 21.21.21.0/24
ip-prefix 22.22.22.0/24

```

C)

```

policy
route-policy eBGP_Community_Policy
sequence 1
match
address Community_Prefix
action accept
set
community 999:65000 local-as
default-action reject
lists
prefix-list Community_Prefix
ip-prefix 20.20.20.0/24
ip-prefix 21.21.21.0/24
ip-prefix 22.22.22.0/24

```

D)

```
policy
route-policy eBGP_Community_Polic
sequence 1
match
address Community_Prefix
action accept
set
community 999:65000 no-export
default-action accept
lists
prefix-list Community_Prefix
ip-prefix 20.20.20.0/24
ip-prefix 21.21.21.0/24
ip-prefix 22.22.22.0/24
```

- A. Option A
- B. Option B
- C. Option C
- D. Option D

Answer: D

NEW QUESTION 407

An engineer is tasked to improve throughput for connection-oriented traffic by decreasing round-trip latency. Which configuration will achieve this goal?

- A. turn on "Enable TCP Optimization"
- B. turn off "Enhance ECMP Keying"
- C. turn off "Enable TCP Optimization"
- D. turn on "Enhance ECMP Keying"

Answer: A

Explanation:

TCP optimization fine-tunes the processing of TCP data traffic to decrease round-trip latency and improve throughput.

<https://www.cisco.com/c/dam/en/us/td/docs/routers/sdwan/configuration/config-18-2.pdf#page=530>

NEW QUESTION 409

In an AWS cloud, which feature provision WAN Edge routers automatically in Cisco SD-WAN?

- A. Cloud app
- B. Cloud OnRamp
- C. vAnalytics
- D. Network Designer

Answer: B

Explanation:

Cisco SD-WAN Cloud OnRamp for IaaS, "Cloud OnRamp" for short, is a Cisco SD-WAN feature that automates provisioning of a Cisco SD-WAN virtual appliance routers (either vEdge Cloud or CSR (Cloud Services Router)) in the AWS cloud, after providing

NEW QUESTION 411

Which IP address must be reachable by a WAN Edge device for the ZIP process to work?

- A. 10.1.1.1
- B. 4.4 4.4
- C. 172.16.1.1
- D. 8.8.8.8

Answer: D

NEW QUESTION 412

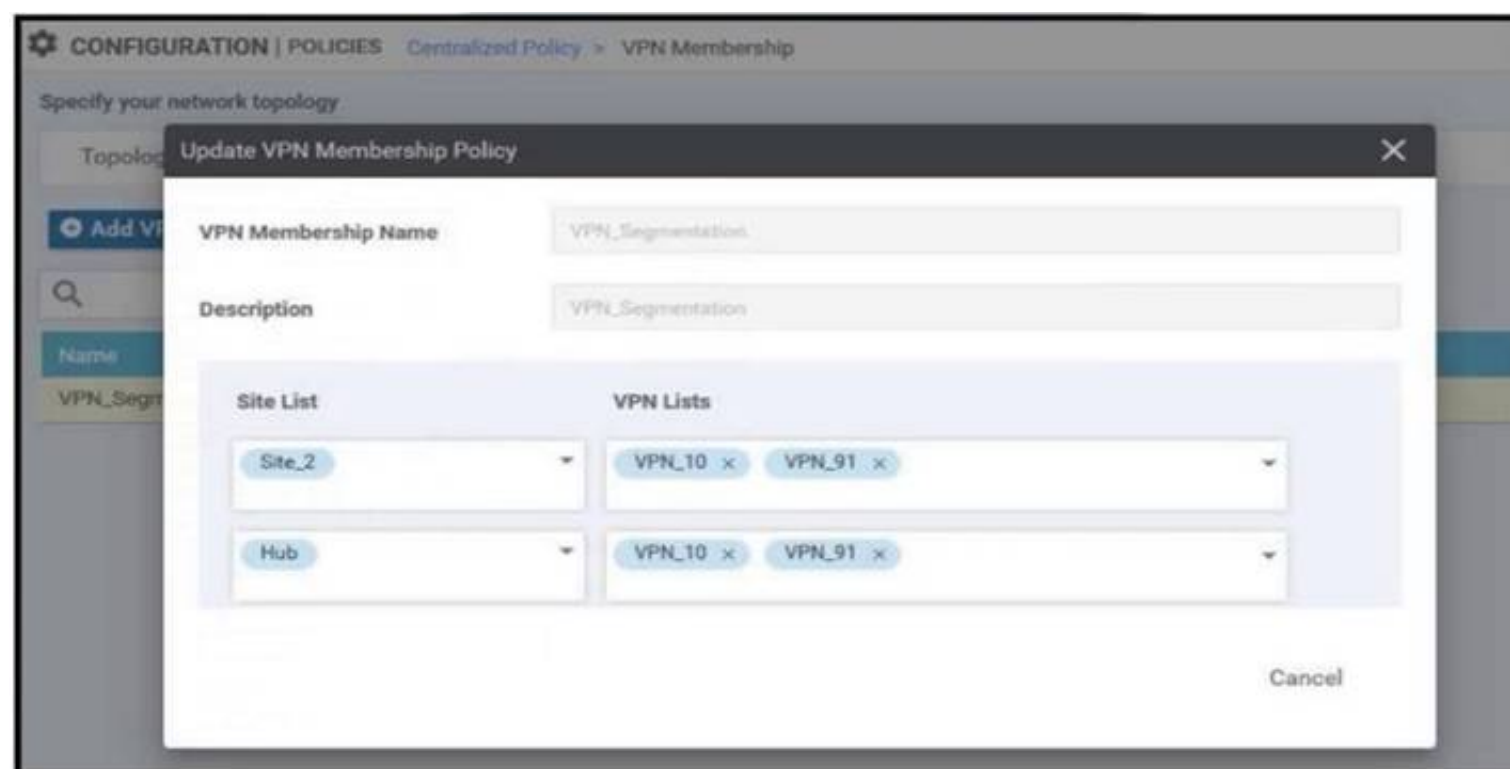
Which two protocols are supported for software image delivery when images are hosted on a remote server? (Choose two.)

- A. HTTPS
- B. SSL
- C. HTTP
- D. TFTP
- E. FTP

Answer: DE

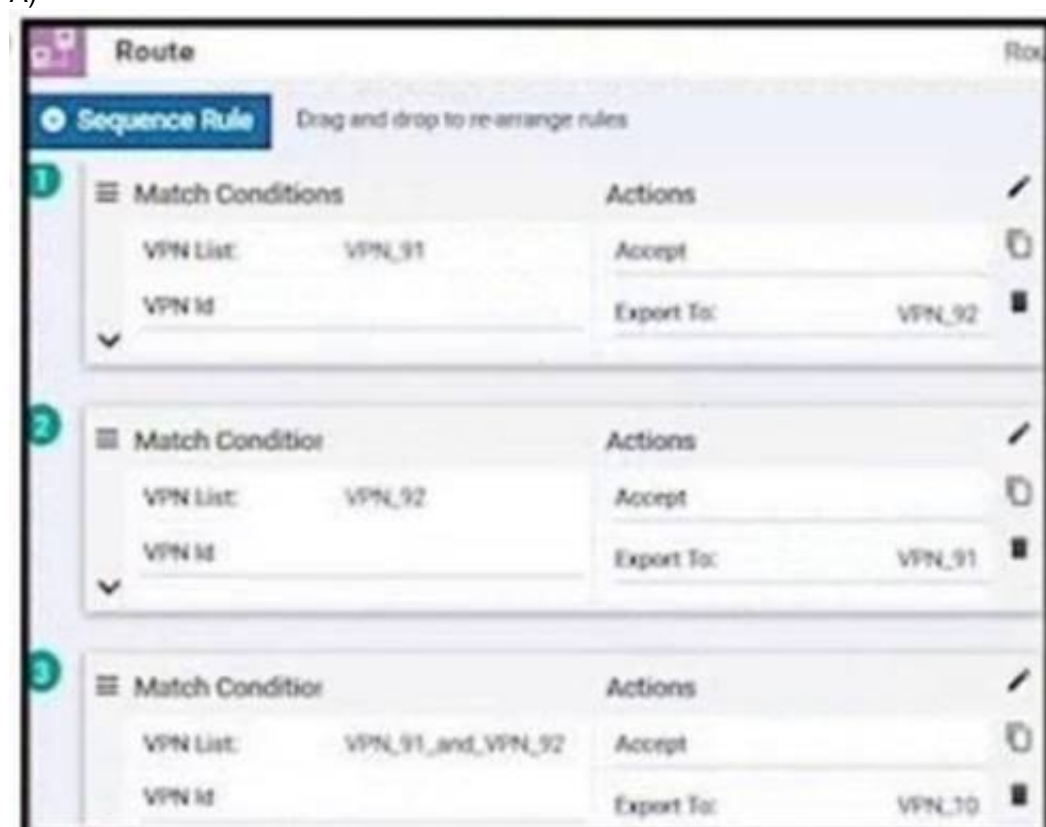
NEW QUESTION 415

Refer to the exhibit.

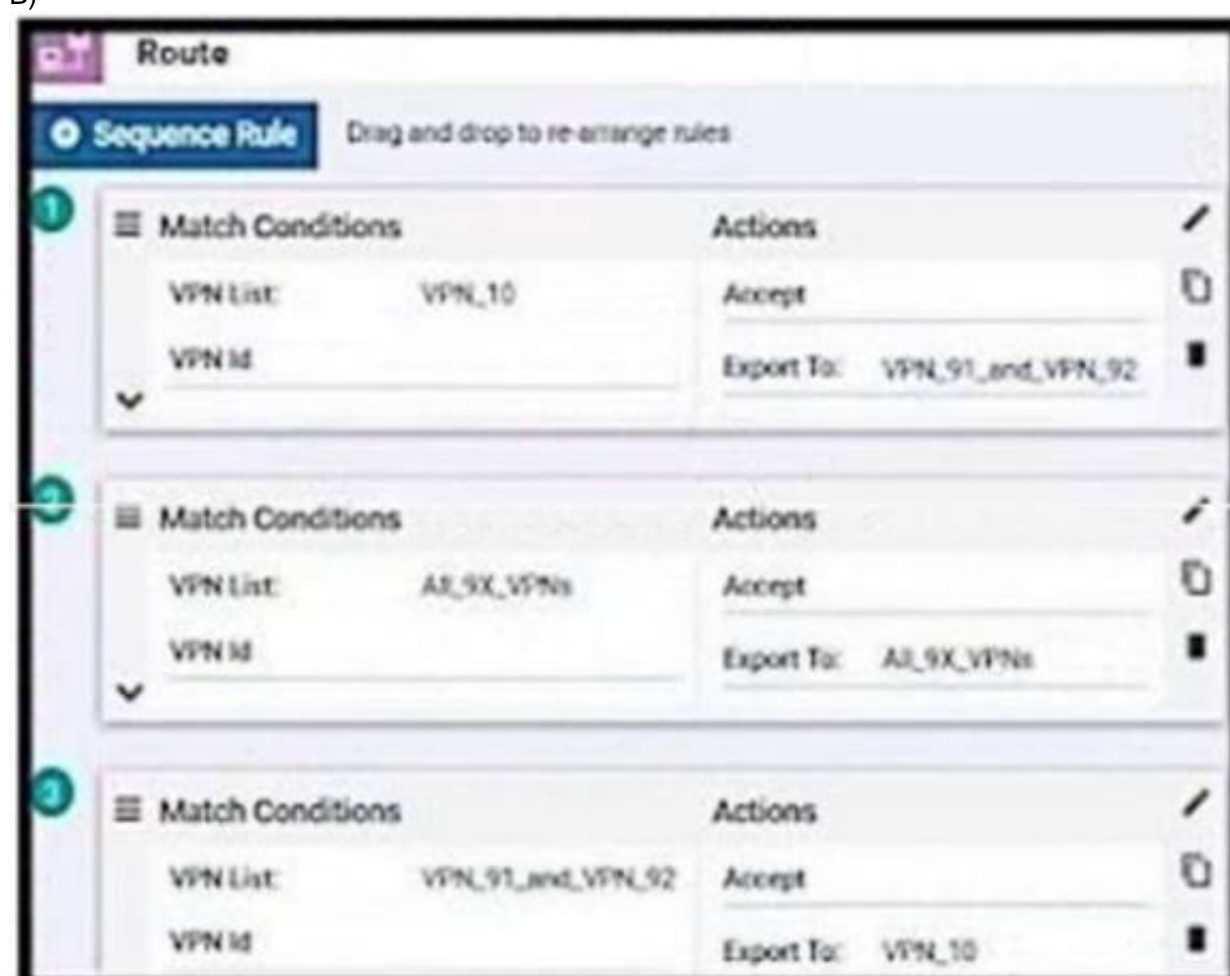


An enterprise has hub and spoke topology where it has several VPNs. An engineer must allow users in VPN91 to reach users in VPN92 and VPN10 to reach VPN91 and VPN92. Which configuration meets these requirements?

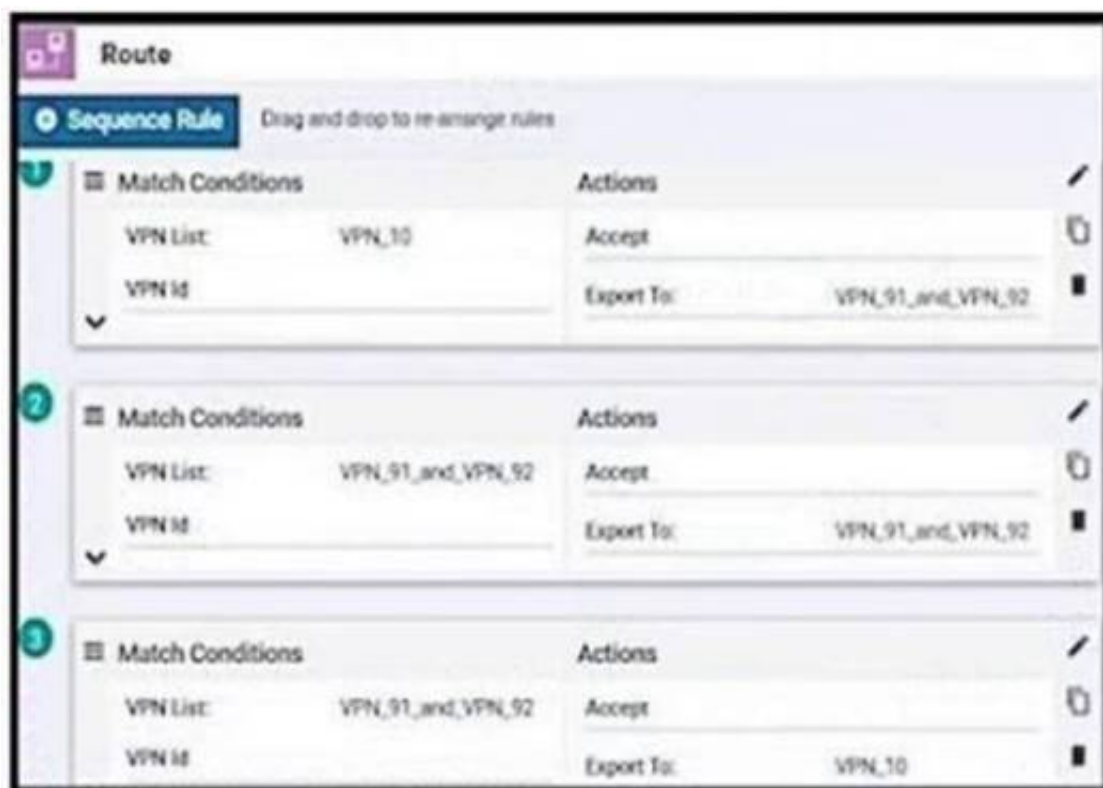
A)



B)



C)



D)



- A. Option A
- B. Option B
- C. Option C
- D. Option D

Answer: C

NEW QUESTION 420

Which two vRoute attributes should be matched or set in vSmart policies and modified by data policies? (Choose two.)

- A. site ID
- B. preference
- C. VPN
- D. TLOC
- E. origin

Answer: BC

NEW QUESTION 421

Which configuration changes the packet loss priority from low to highly?

A)

```
policy
 policer ccnp-traffic
  rate 1000000
  burst 20000
  plp high
```

B)

```
policy
 policer ccnp-traffic
  rate 1000000
  burst 20000
  exceed remark
```

C)

```
policy
 policer ccnp-traffic
  rate 1000000
  burst 20000
  exceed drop
```

D)

```
policy
 policer ccnp-traffic
  rate 1000000
  burst 20000
  exceed high
```

- A. Option A
- B. Option B
- C. Option C
- D. Option D

Answer: B

Explanation:

we change the PLP from low to high (configured by the **policer exceed remark** command).

<https://www.cisco.com/c/en/us/td/docs/routers/sdwan/configuration/qos/vEdge-20-x/qos-book/forwarding-qos.h>

NEW QUESTION 424

.....

THANKS FOR TRYING THE DEMO OF OUR PRODUCT

Visit Our Site to Purchase the Full Set of Actual 300-415 Exam Questions With Answers.

We Also Provide Practice Exam Software That Simulates Real Exam Environment And Has Many Self-Assessment Features. Order the 300-415 Product From:

<https://www.2passeasy.com/dumps/300-415/>

Money Back Guarantee

300-415 Practice Exam Features:

- * 300-415 Questions and Answers Updated Frequently
- * 300-415 Practice Questions Verified by Expert Senior Certified Staff
- * 300-415 Most Realistic Questions that Guarantee you a Pass on Your FirstTry
- * 300-415 Practice Test Questions in Multiple Choice Formats and Updatesfor 1 Year